



iWellnessExam:

Cutting Edge Eye Care...

New Revenue Stream

optovue

Optovue.com

Introducing the **iWellness** *Exam*

Powered by **optovue**



- Gain valuable information to aid in **early diagnosis** of ocular disease
- **Create a new revenue stream*** to offset the cost of your iVue SD-OCT
- Grow your medical practice with **one fast and simple scan**
- **Retain patients** by delivering care that protects eye health
- **Differentiate your practice and increase referrals** with state of the art technology and enhanced patient education

"Patients really like being able to see that everything is within normal, or if there is a problem, being able to actually see it and be involved in their own care."

Amy Peterson, O.D.,
Saxonburg Family Eye Care, Saxonburg, PA

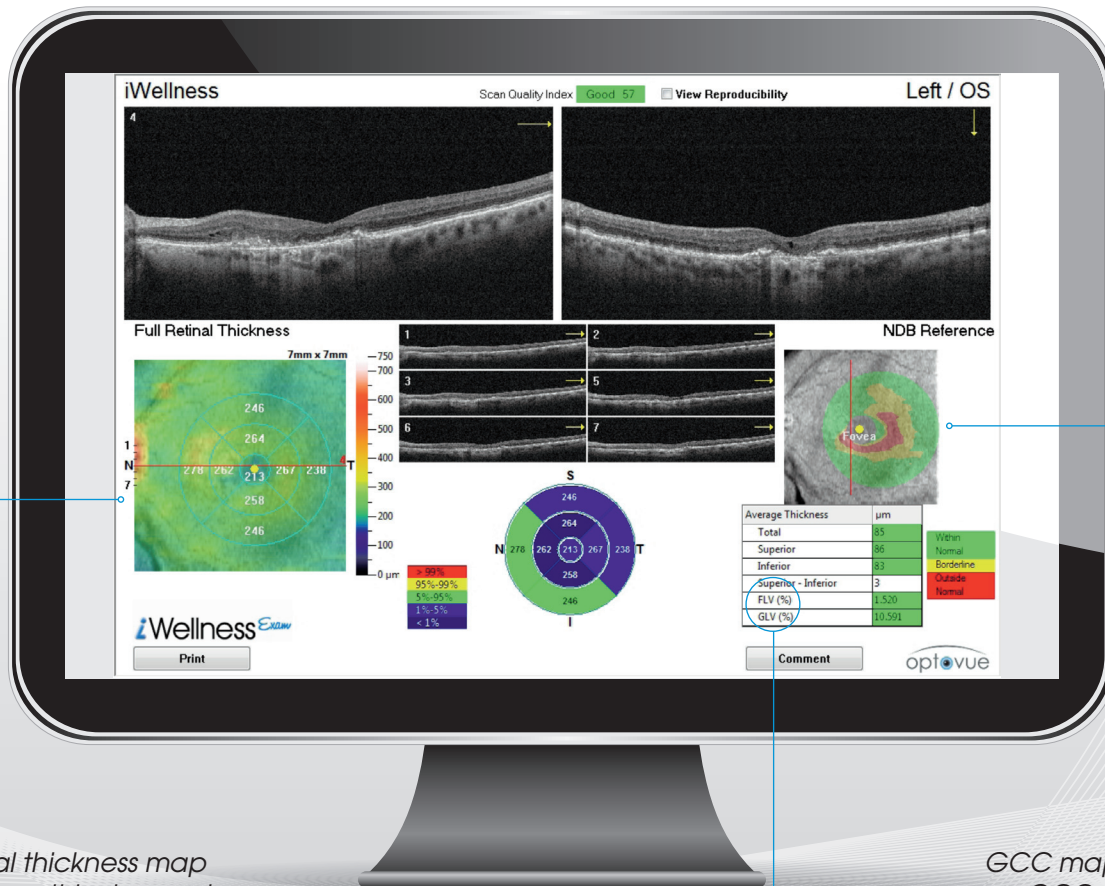
"OCT technology is clearly the most important advancement in our practice in the past 20+ years. It allows us to provide the most comprehensive exam possible, gives us tremendous confidence that we have provided that service to our patients, and has kept us at the cutting edge of medical eye health care."

Steve Siegel, O.D., Siegel Eye Care Associates, Pittsburgh, PA

*Available exclusively from Optovue.

The iWellnessExam is a **quick and easy SD-OCT** scan that provides:

- Single report displaying retinal thickness and GCC thickness with normative comparison
- Symmetry analysis
- Exclusive GCC metrics, FLV% and GLV%, provide important information to aid in the diagnosis and management of glaucoma¹
- High resolution B-scans



Retinal thickness map uncovers thinning and thickening

GCC map uncovers GCC thinning

FLV & GLV* are valuable data points to aid in the prediction of visual field conversion in glaucoma suspects

*Exclusively available on Optovue SD-OCT systems.

¹Data on file.

Optovue is
committed to your
success with OCT

- Exclusive iWellness scan provides additional revenue stream to offset the cost of your iVue SD-OCT
- iWellness Practice Consultant provides implementation support
- TOMMI education program offers valuable resources on growing your medical practice: register today at Optovue.com/TOMMI

Optovue, Incorporated:
2800 Bayview Drive, Fremont, CA 94538
PH: +1 510.623.8868 | FX: +1 510.623.8668



*iVue SD-OCT includes a full suite of retina,
optic nerve and cornea scans.*