

iScan<sup>TM</sup> OCT



Simplicity in Operation

Elevating eye health care  
with the touch of a button.

optovue

Introducing **iScan™**

## OCT Made Easy

1. Enter the patient's information
2. Properly position the patient
3. Touch to start



iScan vocally guides the patient  
through the entire exam.\*

\*Operator can assist by using the touchscreen controls or  
assume full control in a non-compliant patient.

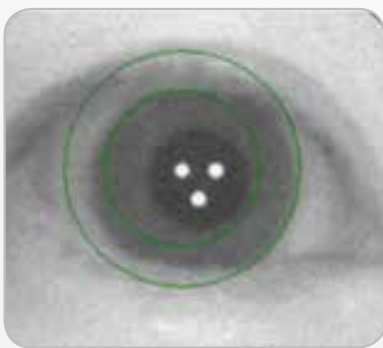
# Why iScan?

## Software-Assisted Platform

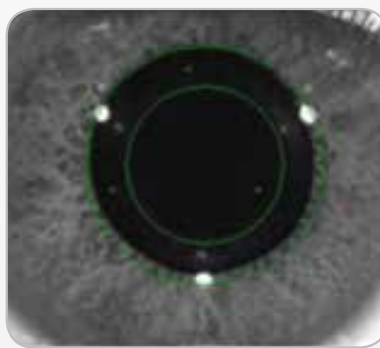
iScan's innovative software-assisted platform makes it ideal for practices with limited staff resources. Operating iScan is simple, requires minimal training and delivers consistent scan acquisition.

- Detects the eye to be scanned
- Aligns the camera over the pupil
- Optimizes the scan signal strength

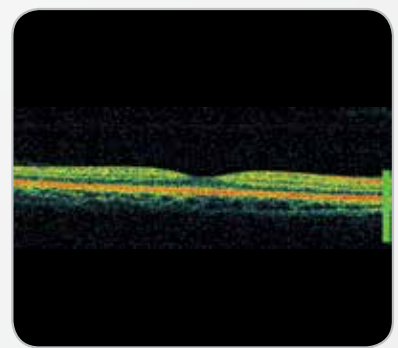
After completing scan acquisition, iScan evaluates each scan to ensure quality data has been captured.



Eye Detection



Camera Alignment



Signal Strength Optimization



## Truly Portable

iScan weighs in at only 43 pounds, making it easy to move the instrument from room to room or practice to practice. Setting up the system is as easy plugging in the power cord and unlocking the system.

## Compact Design

iScan's space-saving footprint makes it ideal for small spaces and the tabletop design offers the flexibility to place it in any room in the practice.



**Retinal thickness map** uncovers thinning and thickening

**GCC map** uncovers GCC thinning



**FLV & GLV\*** are valuable data points to aid in the prediction of visual field conversion in glaucoma suspects

# iWellness Scan

## Expanding Eye Health Care...

- Elevate your comprehensive eye exam with detailed information on the health of the retina
- Streamline the exam process by quickly confirming normal or more efficiently diagnosing pathology
- Improve patient education with personalized eye health information presented in one simple report

## New Revenue Stream

- Create a new revenue stream that is not reliant on third-party payers
- Grow the number of medical patients you see with one fast and simple scan
- Differentiate your practice and retain patients by delivering care that protects eye health



## Quick & Easy

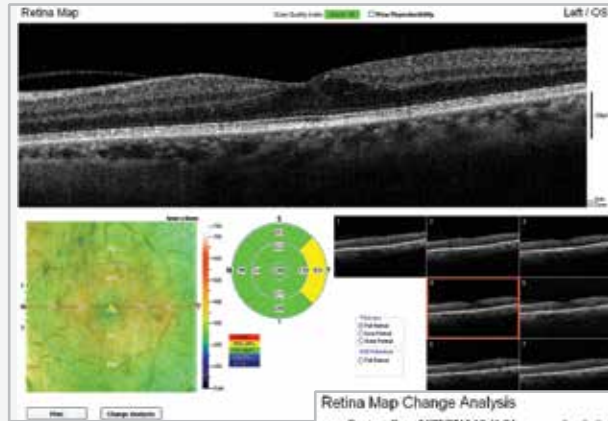
- The iWellness scan takes just moments to complete
- Single report displays retinal thickness and GCC thickness with normative comparison and symmetry analysis



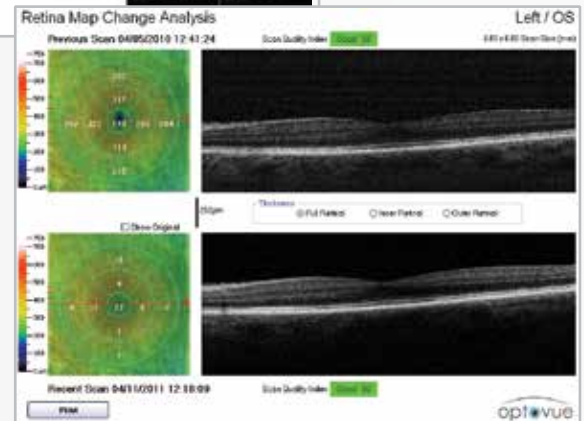
# iScan Essential

## Retina Map

The retina map is an effective diagnostic tool for assessing retinal swelling and thinning as well as evaluating the integrity of the macular area.



Retina Map

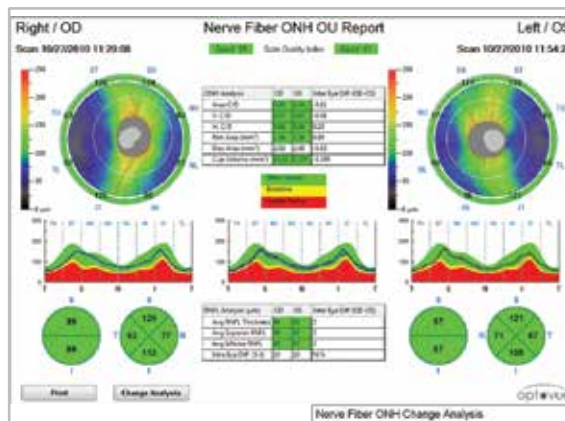


Retina Map with Change Analysis

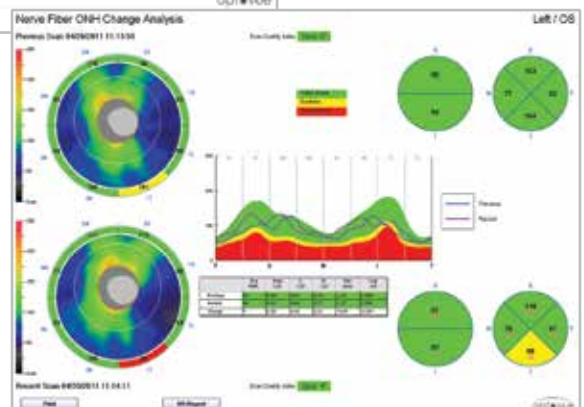
## Optic Nerve Head Scan

The optic nerve head analysis provides a detailed view of the nerve head with a study of the thickness of the retinal nerve fiber and cup/disc parameters.

An OU report allows symmetry analysis.



RNFL/ONH Report

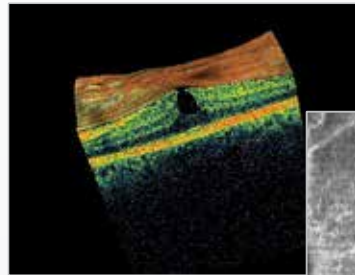


RNFL/ONH Report with Change Analysis

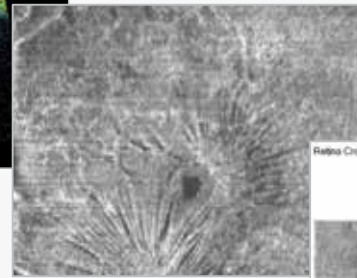
# iScan Comprehensive

## Retina

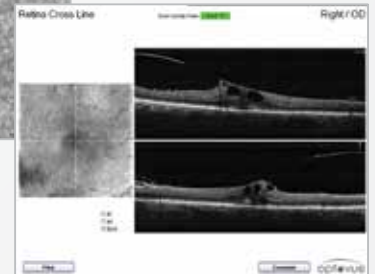
- 3D retina scan with en face analysis enables virtual dissection of the retina by displaying three different reference planes: ILM, IPL and RPE.
- HD crossline scan



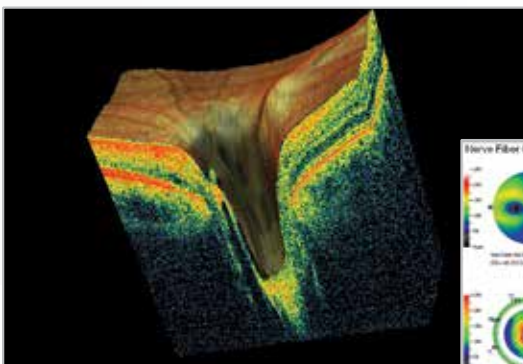
3D Macula Scan



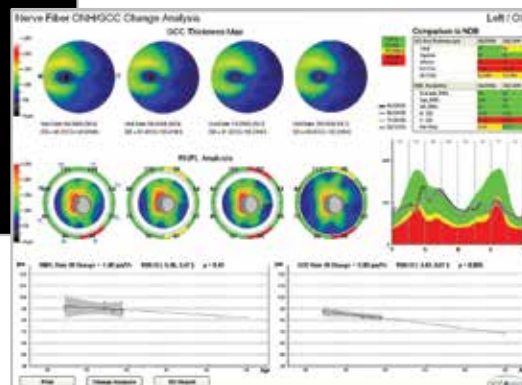
En Face View of Inner Limiting Membrane



HD Crossline Scan



3D Optic Disc Scan



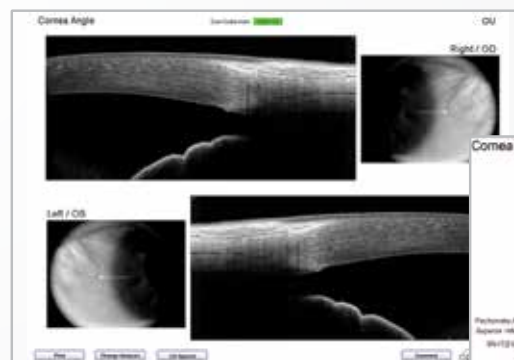
ONH/GCC Report with Change Analysis

## Optic Nerve

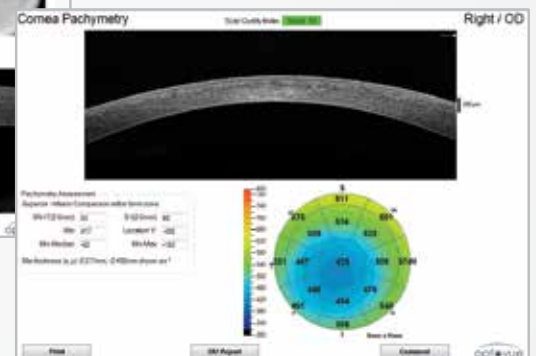
- 3D disc scan shows the optic nerve in cross section and gives a representation of the relative thickness of the selected slices
- GCC analysis aids in identification of ganglion cell loss, which can precede RNFL loss.

## Cornea

- Pachymetry
- Angle measurement



OU Angle Report



Pachymetry Map

## iScan Enhances Your Practice

iScan demonstrates your practice's commitment to eye health by offering your patients the most comprehensive eye health care available with cutting-edge technology. And iScan with iWellness gives your practice a new revenue stream to grow your bottom line.

**Optovue** is  
committed to your  
success with OCT



- All iScan owners receive support from an iWellness Practice Consultant who provides one-on-one implementation support to set your practice on the path to success
- Exclusive education programs delivers valuable resources on getting the most from your OCT
- Optovue's Lifelong Customer Care program offers options for protecting your investment and includes five years' unlimited phone support.



*"Patients really like being able to see that everything is normal, or if there is a problem, being able to actually see it and be involved in their own care."*

**Amy Peterson, O.D.**  
Saxonburg Family Eye Care



# iFusion™ SD-OCT & Digital Fundus Photography



The Complete Retinal Imaging Solution

# iFusion™ THE COMPLETE RETINAL IMAGING SOLUTION

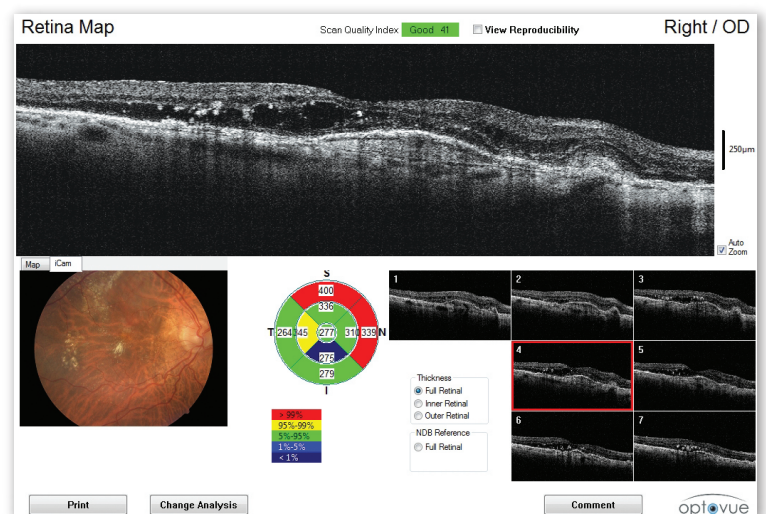
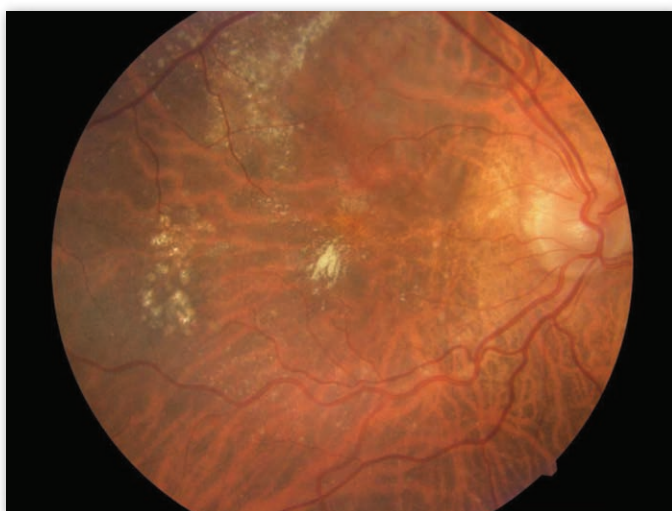
iFusion combines the best of Spectral-Domain OCT and Fundus imaging by adding the powerful OCT capabilities of **iVue**™ and high quality imaging from **iCam**™ on a single, integrated, versatile platform that will add value to your practice.

## SAVE TIME & SPACE FOR PRACTICE EFFICIENCY

iFusion enhances your practice efficiency by streamlining your workflow in evaluating the patient with OCT and fundus imaging at one compact instrument.

## UPGRADE OPTIONS FOR MORE FLEXIBILITY

As your technology needs change, iFusion's modularity provides you various upgrade pathways to choose from so that you can offer the latest in OCT and fundus imaging to your patients.



High Quality Imaging | Affordable | Easy Integration

# The Fusing of **OCT** & **Fundus** **Photography**





\*For illustrative purposes only



# iFusion™

## SD-OCT & Digital Fundus Photography

		All-In-One Computer
SPECIFICATIONS	SPECIFICATIONS	SPECIFICATIONS
<p><b>iVue Scanner:</b>                      OCT Image: 26,000 A-scan/second                      Frame Rate: 256 to 1024 A-scan/Frame                      Depth Resolution (in tissue) : 5.0 <math>\mu</math>m</p> <p><b>Scan Range:</b>                      Depth: 2 or 2.3mm                      Transverse: 2mm to 12mm</p> <p><b>Scan Beam Wavelength:</b> <math>\lambda=840\pm 10</math>nm</p> <p><b>Exposure Power at pupil:</b> 700<math>\mu</math>W to 750<math>\mu</math>W</p> <p><b>External Image (Live IR)</b>                      FOV: 13mm x 9mm</p> <p><b>Patient Interface:</b>                      Working Distance: 21.2mm for retina,                      16.6 for cornea                      Motorized Focus Range: -15D to +10D</p>	<p><b>Field Angle:</b> 45°</p> <p><b>Image:</b> 5.2 Million Pixels</p> <p><b>Pupil Diameter:</b> <math>\geq 4</math>mm</p> <p><b>Illumination During Alignment to Patient's Eye:</b> NIR LED</p> <p><b>Flash for Retina Image Capture:</b>                      White LED located inside the instrument at the end of the illumination optical train, synchronized to flash with the capture function</p> <p><b>Cornea Image:</b>                      Illumination from 3 external white LED sources in steady state mode</p> <p><b>Total Focus Diopter Adjustment Range:</b> -35D to +30D</p> <p><b>Z-ranging (Working Distance):</b> ~25mm</p> <p><b>Fixation:</b> 6 Internal &amp; 1 Adjustable External</p> <p><b>Focus Adjustment:</b> Manual</p>	<p>21.5" Display</p> <p>Windows 7®</p> <p>i5 Intel® Processor</p> <p>4GB Memory</p> <p>500GB Storage</p>

