

iScanTM OCT



Simplicity in Operation

Elevating eye health care
with the touch of a button.

optovue

Introducing **iScan™**

OCT Made Easy

1. Enter the patient's information
2. Properly position the patient
3. Touch to start



iScan vocally guides the patient
through the entire exam.*

*Operator can assist by using the touchscreen controls or assume full control in a non-compliant patient.

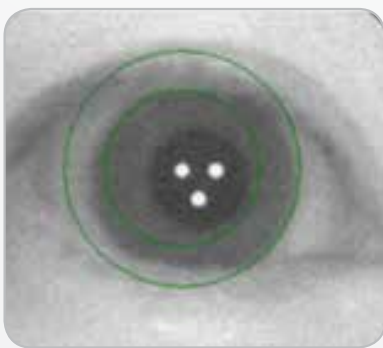
Why iScan?

Software-Assisted Platform

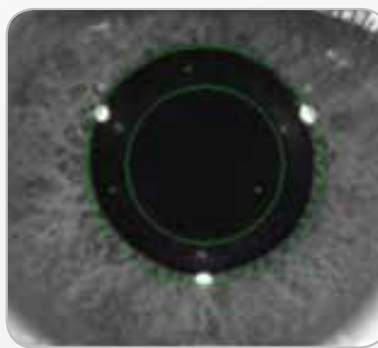
iScan's innovative software-assisted platform makes it ideal for practices with limited staff resources. Operating iScan is simple, requires minimal training and delivers consistent scan acquisition.

- Detects the eye to be scanned
- Aligns the camera over the pupil
- Optimizes the scan signal strength

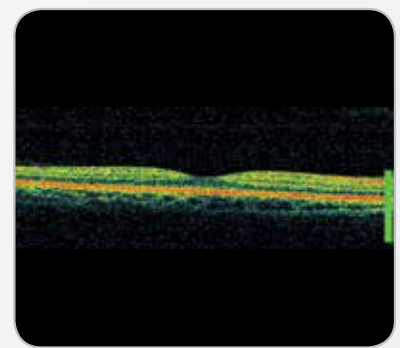
After completing scan acquisition, iScan evaluates each scan to ensure quality data has been captured.



Eye Detection



Camera Alignment



Signal Strength Optimization



Truly Portable

iScan weighs in at only 43 pounds, making it easy to move the instrument from room to room or practice to practice. Setting up the system is as easy plugging in the power cord and unlocking the system.

Compact Design

iScan's space-saving footprint makes it ideal for small spaces and the tabletop design offers the flexibility to place it in any room in the practice.



Retinal thickness map uncovers thinning and thickening

GCC map uncovers GCC thinning



FLV & GLV* are valuable data points to aid in the prediction of visual field conversion in glaucoma suspects

iWellness Scan

Expanding Eye Health Care...

- Elevate your comprehensive eye exam with detailed information on the health of the retina
- Streamline the exam process by quickly confirming normal or more efficiently diagnosing pathology
- Improve patient education with personalized eye health information presented in one simple report

New Revenue Stream

- Create a new revenue stream that is not reliant on third-party payers
- Grow the number of medical patients you see with one fast and simple scan
- Differentiate your practice and retain patients by delivering care that protects eye health



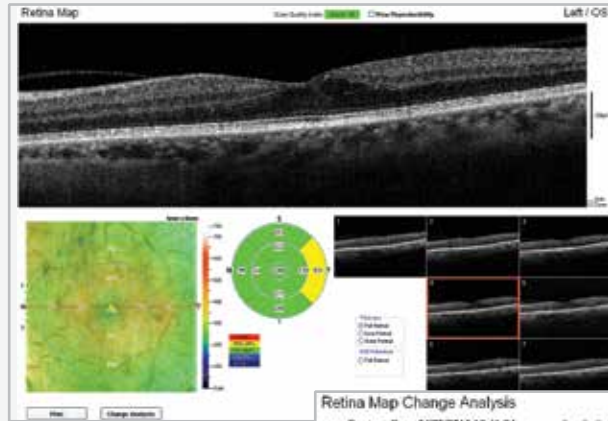
Quick & Easy

- The iWellness scan takes just moments to complete
- Single report displays retinal thickness and GCC thickness with normative comparison and symmetry analysis

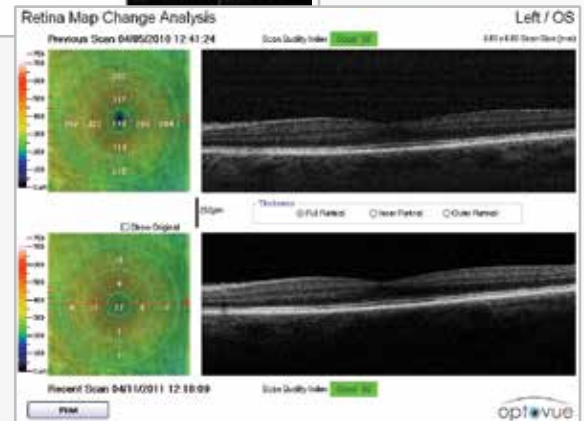
iScan Essential

Retina Map

The retina map is an effective diagnostic tool for assessing retinal swelling and thinning as well as evaluating the integrity of the macular area.



Retina Map

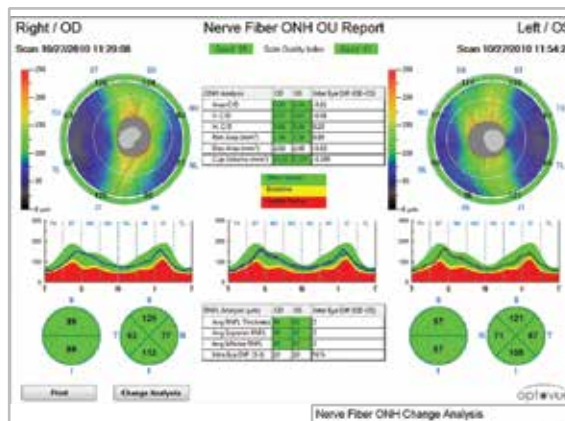


Retina Map with Change Analysis

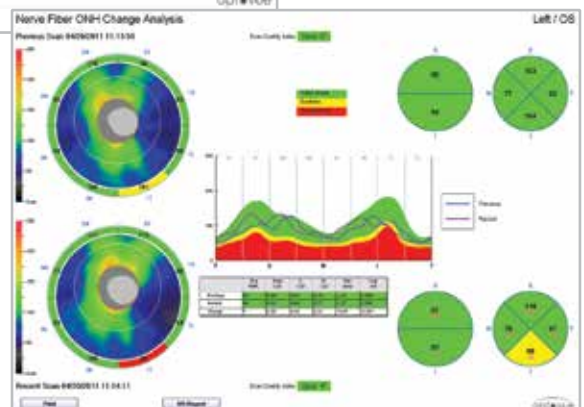
Optic Nerve Head Scan

The optic nerve head analysis provides a detailed view of the nerve head with a study of the thickness of the retinal nerve fiber and cup/disc parameters.

An OU report allows symmetry analysis.



RNFL/ONH Report

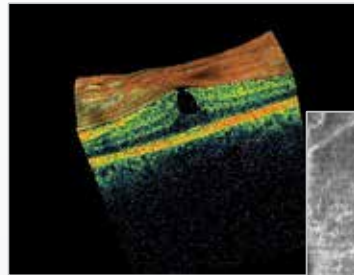


RNFL/ONH Report with Change Analysis

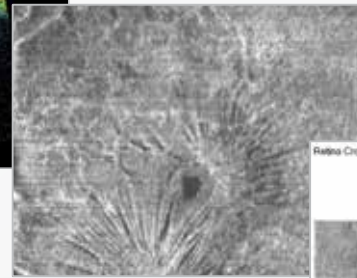
iScan Comprehensive

Retina

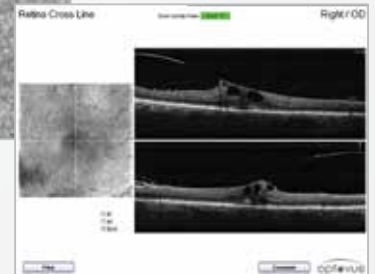
- 3D retina scan with en face analysis enables virtual dissection of the retina by displaying three different reference planes: ILM, IPL and RPE.
- HD crossline scan



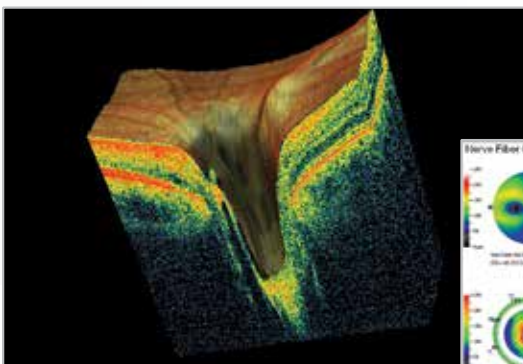
3D Macula Scan



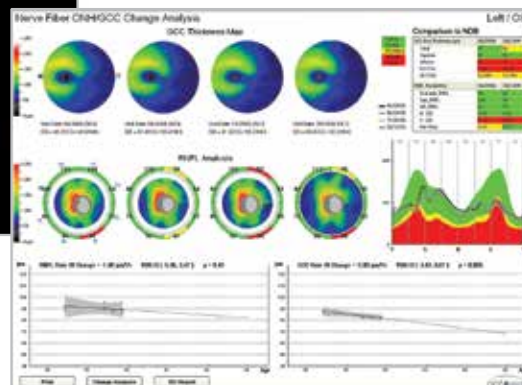
En Face View of Inner Limiting Membrane



HD Crossline Scan



3D Optic Disc Scan



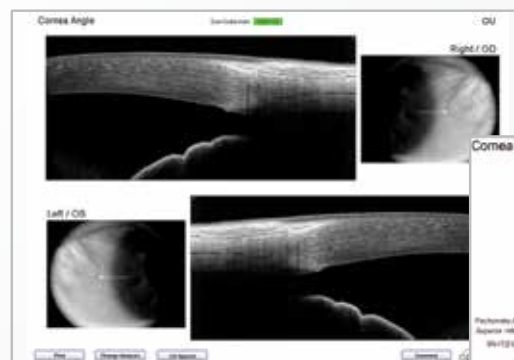
ONH/GCC Report with Change Analysis

Optic Nerve

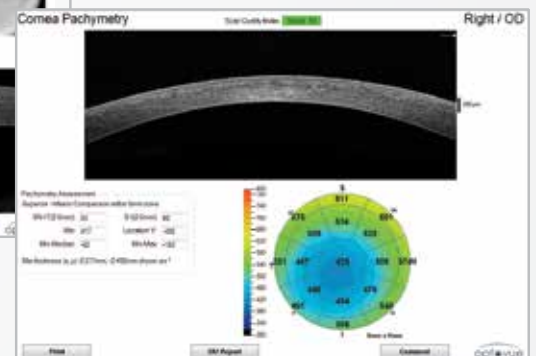
- 3D disc scan shows the optic nerve in cross section and gives a representation of the relative thickness of the selected slices
- GCC analysis aids in identification of ganglion cell loss, which can precede RNFL loss.

Cornea

- Pachymetry
- Angle measurement



OU Angle Report



Pachymetry Map

iScan Enhances Your Practice

iScan demonstrates your practice's commitment to eye health by offering your patients the most comprehensive eye health care available with cutting-edge technology. And iScan with iWellness gives your practice a new revenue stream to grow your bottom line.

Optovue is
committed to your
success with OCT



- All iScan owners receive support from an iWellness Practice Consultant who provides one-on-one implementation support to set your practice on the path to success
- Exclusive education programs delivers valuable resources on getting the most from your OCT
- Optovue's Lifelong Customer Care program offers options for protecting your investment and includes five years' unlimited phone support.



"Patients really like being able to see that everything is normal, or if there is a problem, being able to actually see it and be involved in their own care."

Amy Peterson, O.D.
Saxonburg Family Eye Care