



# PRO Series

## HIGH SPEED DIGITAL CUTTING SYSTEM



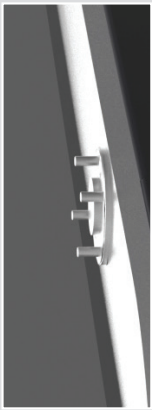
**iECHO PRO Series** automated production workflow satisfies the need for high efficiency by maximizing the capacity of the system and the operator.

## PRO SERIES SPECIFICATIONS

Type	PRO1700	PRO2600	PRO3000
Cutting Area	67" x 51"	98" x 67"	118" x 67"
Machine Dimensions	98" x 82"	126" x 92"	145" x 94"
Max. Cutting Speed	Up to 59 ips		
Cutting Accuracy	.00393" or .09982mm		
Max. Cutting Thickness	1.969" or 50mm		
Data Format	DXF, HPGL, PDF		
Media Handling	Adjustable Zone Vacuum System		
Pump Power	5.5KW / 7.5KW / 9KW		
Power	220V / 50HZ 380V / 50HZ		
Operating Environment	Temperature 32°F - 90°F Humidity 20% - 80%RH		
Warranty	One Year On-Site		

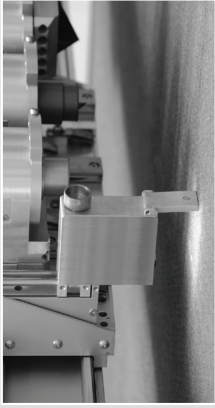
**AUTOMATIC KNIFE INITIALIZATION**

Cutting depth accuracy is controlled with displacement sensor through automatic knife initialization.



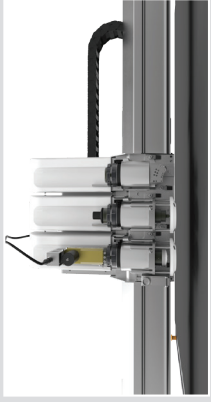
**PRECISE AUTOMATIC POSITIONING SYSTEM**

With a high precision CCD camera, the IECHO PRO Series determines the precise position and registration for cutting different materials, resolving the issue of manual positioning deviation and print deformation.



**EFFICIENT CUTTING HEADS**

With a maximum cutting speed of 1.5 mm/sec, the IECHO PRO Series increases production efficiency.



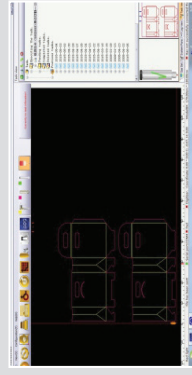
**CONTINUOUS CUTTING SYSTEM**

Intelligent conveyor system enables feeding, cutting and collecting finished work efficiently. The roll feed table option can cut longer pieces, reducing labor cost and increasing productivity.



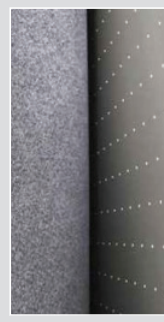
**MOTION CONTROL SYSTEM**

CutterServer makes the cutting process smooth, efficient and accurate.



**AVIATION ALUMINUM TABLE**

Durable, zoned vacuum table



**SAFETY DEVICES**

Multiple safety devices ensure the security of the operator.



- Three high-speed online cutting tool slots
- Automatic knife initialization
- Available material conveyor system
- Multiple safety devices for operator security

- Multi-zoned vacuum table
- Supported by iBright Cut & Flexi Enroute
- Full one-year onsite warranty



Sold & Supported in the U.S.A. by



800-260-0839 • info@azon.com • azon.com