

Marathon everRun[®] VM for Citrix XenServer

Add fault tolerance to your virtual environments



Using virtualization to consolidate servers also consolidates risk to applications. A single physical component failure can knock out many applications in virtual servers.

The integration of Marathon's multi-award winning everRun[®] software and Citrix XenServer leap-frogs other offerings for high availability virtualization. Now you can get reliable high availability and virtualization without complexity.

RUN BUSINESS CRITICAL APPLICATIONS—AND MORE—IN VIRTUAL MACHINES

everRun delivers reliable protection for critical applications like Exchange, SQL, SharePoint, and Citrix XenApp by providing redundant virtual machines and synchronized mirroring of your network, storage and data—preventing application downtime and data loss.

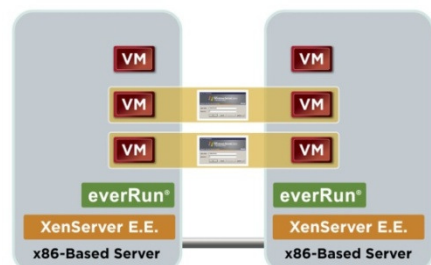
The integration of Citrix XenServer's superior "bare-metal" performance and everRun automated software fault-tolerant architecture gives you the high availability XenServer required to run business critical and mission critical applications in virtual machines—so you can gain the benefits of server virtualization across a much broader range of applications.

GET INSTANT VIRTUALIZATION AVAILABILITY WITH everRun

Automated setup and configuration eliminates the manual configuration other availability solutions require. Point to the VM other you want to protect, and everRun's setup wizard does the rest. You can fully

deploy XenServer and everRun from bare metal in 30 minutes or less. everRun has been designed and tested to work with the latest versions of Citrix XenServer:

- Enterprise-Class, Cloud-Proven, Free XenServer
- Essentials for XenServer, Enterprise Edition
- Essentials for XenServer, Platinum Edition



WORLDWIDE HEADQUARTERS

Marathon Technologies Corporation
 295 Foster Street, Littleton, MA 01460
 Tel 1.800.884.6425 / 1.978.489.1100
 Fax 1.978.489.1101
 Email: info@marthontechologies.com
 Web: www.marthontechologies.com

EMEA HEADQUARTERS

Marathon Technologies UK Ltd
 Regus House, Trinity Court
 Wokingham Road, Bracknell
 Berkshire, RG42 1PL
 Tel +44(0) 1344.706.241
 Fax +44(0) 1344.706.242
 Email: emea@marthontechologies.com
 Web: www.marthontechologies.com

AUTOMATE VIRTUAL SERVER HIGH AVAILABILITY

everRun's automated fault detection and management continuously monitors your system, network and disk I/O resources, adjusting protection to problems or changes in your environment. It detects and addresses failures automatically—practically maintaining itself. It's so automated, many companies use everRun at branch locations where there is no local IT presence.

SELECT AVAILABILITY LEVELS BY VM

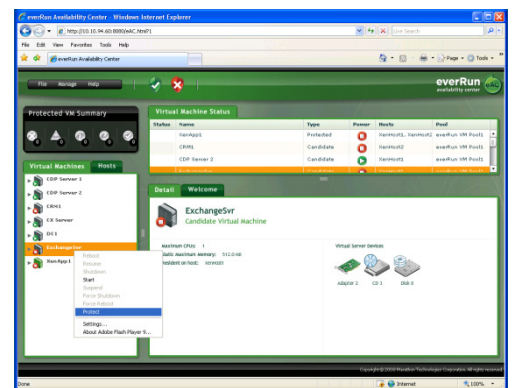
Pick the level you need for each virtual machine workload from a single interface—aligning availability with your budget and resources.

PROTECT ANY WINDOWS SERVER APPLICATION RUNNING IN A VM

everRun VM is application independent. It works with any 32-bit and 64-bit Windows Server application, on Windows Server 2003 or 2008, using standard, off-the-shelf hardware and storage.

GET CONTINUOUS AVAILABILITY BETWEEN DATA CENTERS

everRun SplitSite[®] option goes beyond local server-level protection by enabling continuous availability between geographically dispersed locations. With SplitSite you can ensure that you still meet compliance and production requirements even if your primary data center is hit with a metropolitan-wide disaster. Geographic fault tolerance enables continuous operations even when a whole site is down.



INDUSTRY AWARDS

Marathon Technologies has been recognized and awarded with over a dozen major industry accolades for its innovation and leadership in bringing automated fault tolerant, high availability and disaster recovery to physical and virtual environments.

