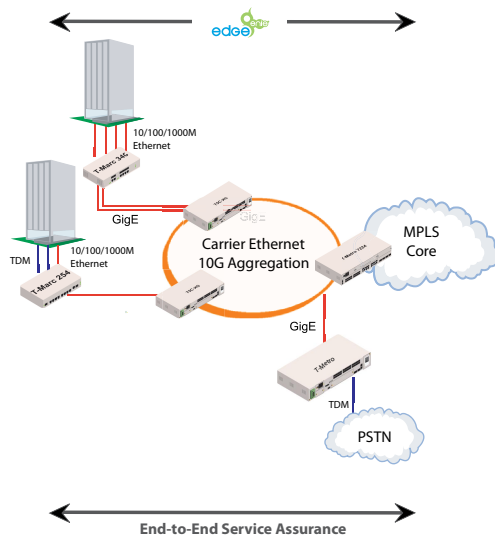


Commercial Ethernet Services



Business customers have an insatiable desire for high bandwidth. They want services which support low latency, mission critical applications, connect geographically dispersed offices and remote workers, and access applications in the cloud. As business looks for communication solutions that will improve the way they conduct business, they also need these solutions to be highly available and reliable.

Ethernet offers a wide range of solutions for businesses that can include direct Internet access (DIA), VPN, E-Line, E-LAN, and E-Tree services (as defined by the MEF).

Telco Systems' Carrier Ethernet solutions can enable service providers to diversify their service offerings for businesses from a first generation, best-effort solution (service-unaware) to a fully end-to-end service-aware solution across both Ethernet and MPLS networks.

- ① Carrier-grade Ethernet edge solutions built to lower costs and provide service-aware and service-assured Ethernet services
- ② Common, robust operating system from the customer edge to provider edge
- ③ MPLS service implementations for enhanced Ethernet service scalability, traffic engineering, security, and resilience
- ④ Simultaneous OAM on all services and traffic flow — IEEE 802.3ah; IEEE 802.1ag; ITU.T Y-1731; MEF SOAM — to maintain customer SLA and optimize network transport performance
- ⑤ Low latency with enhanced QoS mechanisms to support traffic engineering on a per customer/per service basis
- ⑥ Zero-touch provisioning to ease network deployment and training burdens
- ⑦ Network resiliency across multiple network topologies with sub 50mS protection switching
- ⑧ Legacy integration / migration to support DS1 and DS3 CES
- ⑨ Certified to MEF 9 and 14 for standards-based multi-vendor interoperability
- ⑩ Device and Service Management – Point and click provisioning, service management, root cause analysis and network planning tools to reduce OPEX

DEMARICATION



T-Marc 254H Ethernet Demarcation with CES (temperature hardened)



T-Marc 280 2-port Ethernet Demarcation



T-Marc 340/380 Multiservice Ethernet demarcation



AGGREGATION SWITCHES



T5C-XG 10GigE aggregation



T-Metro 200 CES aggregation



T-Metro 7224 10GigE multiservice aggregation

Commercial Ethernet Services

Customer Edge

This versatile family of service demarcation devices provides intelligent and remotely managed, multi-port customer-located equipment (CLE) to deliver managed converged services (voice, video and data) over virtual Ethernet, MPLS/VPLS and IP networks.



T-Marc 254



T-Marc 280



T-Marc 340/380

The **T-Marc 254** offers both Ethernet and CES options to deliver legacy TDM over Ethernet enabling service providers to extend their reach and addressable customer base to include both voice and data without sacrificing revenues from existing TDM services. The T-Marc 254H has been optimized for wireless backhaul applications with standards-based synchronization and is temperature-hardened for outdoor installations.

The **T-Marc 280, 340 and 380** allow service providers to support multiple customers on separate customer interfaces or multiple services over a single customer interface without compromising security or quality of service. Because each service is isolated, providers can troubleshoot each individual service without impacting others.

CES Aggregation

The T-Metro 200 supports a wide variety of technologies including Ethernet, Circuit Emulation (CES), MPLS, OAM (operations, administration and maintenance) tools and Hierarchical QoS (H-QoS). The T-Metro provides access to advanced data services such as virtual private LAN services (VPLS), virtual private wire services (VPWS) and IP virtual private network (IP-VPN) services.



As a CES aggregator, the T-Metro 200 enables service providers to carry T1/E1, DS3, and OC-3/STM-1 traffic transparently across the packet switched network (PSN), using various circuit emulation techniques. The TDM traffic is encapsulated in Ethernet or IP frames to emulate the functionality of a TDM circuit, ensuring that all original feature-set is preserved.

10G Aggregation

These multi-layer Ethernet switches are designed for service providers who need the reliability of the traditional SONET/SDH quality of service and the flexibility to deliver quad play over a 10 Gigabit metro Ethernet network.



T5C-XG

The T5C-XG's high performance, availability and form factor are ideal for broadband triple-play service aggregation and business Ethernet services. The T5C-XG offers high capacity and compact size (only 1.5RU in height, 10 inches in depth). It supports 24 Gigabit Ethernet plug-in (SFP) ports, two 10 Gigabit XFP ports and an additional expansion slot that houses two 10 Gigabit ports for a full 40Gigabit wire-speed, non-blocking switching.

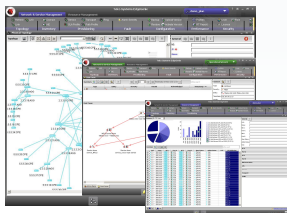
Provider Edge



T-Metro 7224

The T-Metro 7224 was designed for service providers who need the reliability of the traditional SONET/SDH quality of service and the flexibility to deliver quad play over a 10 Gigabit metro Ethernet network. This carrier-class device offers advanced MPLS/HVPLS capabilities, enabling emerging and incumbent service providers to protect their existing investments, while easily migrating to next-generation services. T-Metro 7224 delivers features such as uncompromised security, advanced HQoS and MPLS/ HVPLS.

Service Management



Telco Systems' EdgeGenie service management platform with advanced planning and resource management functionality offers a complete solution for full life cycle of network deployment from planning to managing, monitoring and maintaining services over Carrier Ethernet and MPLS networks. T-Metro 7224 delivers features such as uncompromised security, advanced HQoS and MPLS/ HVPLS.



Int'l Headquarters
Tel: +972-9-866-2525
Fax: +972-9-866-2500
sales.emea@telco.com
http://www.telco.com

US Headquarters
Tel: +1-800-221-2849
Fax: +1-781-551-0538
sales@telco.com
http://www.telco.com

Germany
Tel: +49-241-4635490
Fax: +49-241-4635491
info@batm.de
http://www.telco.com

France
Tel: +33(0)1-567-12-773
Fax: +33(0)1-437-71-780
support@batm.fr
http://www.batm.fr

Asia Pacific
Tel: +65-6224-3112
Fax: +65-6220-5848
info.apac@telco.com
http://www.telco.com

Japan
Tel: +81(3)5215-5709
Fax: +81(3)5215-5704
info.jp@telco.com
http://www.telco.com