



CIRRUS HD-OCT 5000
Advancing Smart OCT

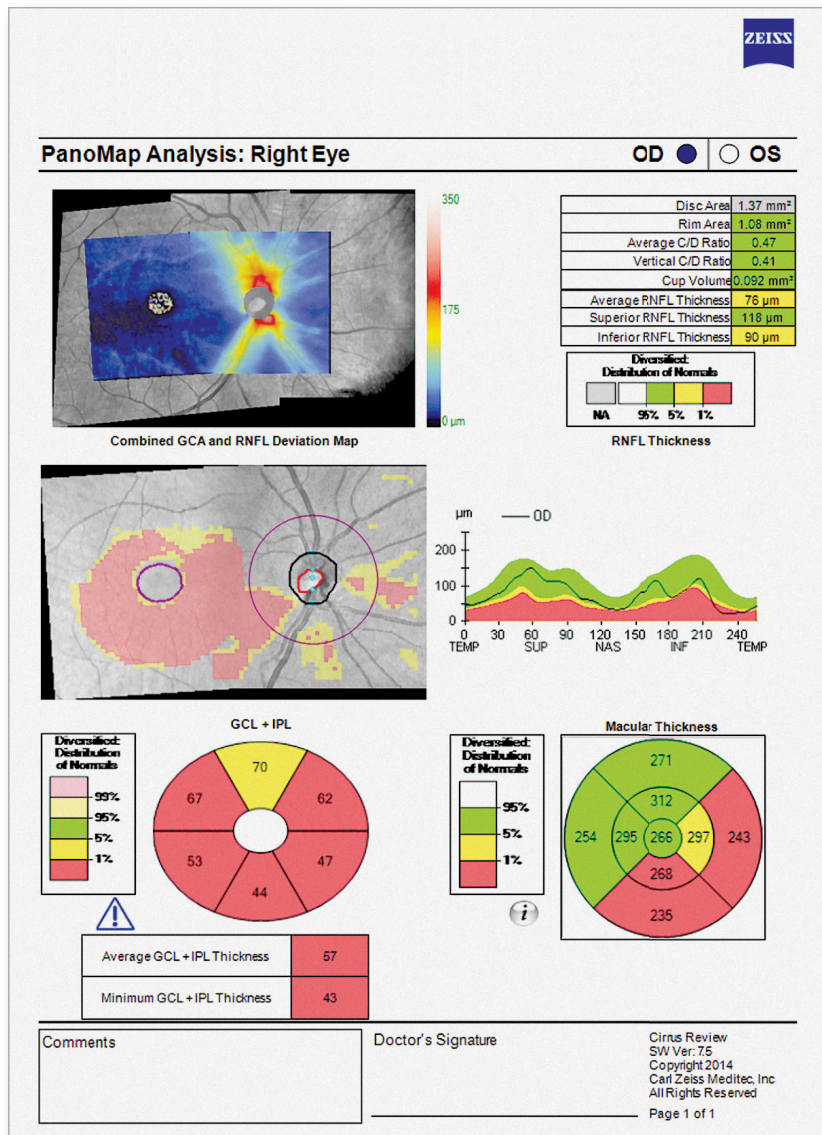
NEW
Imaging
Applications:
Anterior Segment
Glaucoma
Retina



We make it visible.

NEW PanoMap Analysis

Wide-field structural damage assessment for glaucoma



NEW PanoMap™ wide field analysis displays structural data for the entire posterior pole —

RNFL, ONH, and GCA metrics show the extent of structural damage

At-a-glance insight —

A single analysis for integrated insights into early pathologies

Backward-compatible —

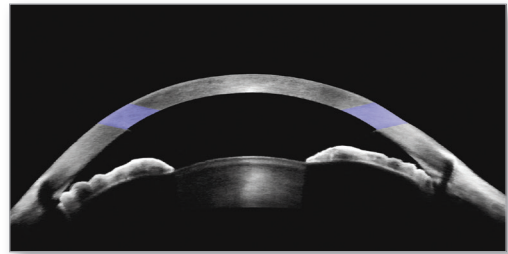
PanoMap uses existing Macular Cube and Optic Disc Cube scans to provide a wide-field view of the posterior pole without altering scan protocols

PanoMap Report with Combined GCA and RNFL Deviation Map

As the world's leading OCT innovator, ZEISS has been at the forefront of industry-defining advancements that have made OCT a standard of care. Today that leadership continues with new scans and clinical assessment tools for the ZEISS CIRRUS™ HD-OCT 5000.

NEW Anterior Segment Premier Module from ZEISS

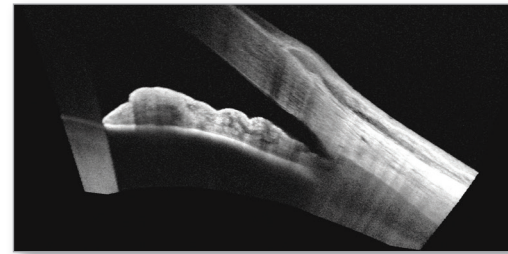
The first retinal OCT with full anterior chamber imaging



ChamberView™

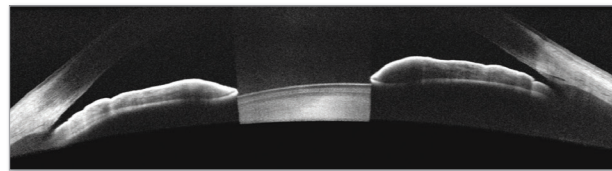
ChamberView image* — ChamberView provides an expansive 15.5 mm wide view of the entire anterior chamber to help identify patients at risk for angle closure glaucoma

*Patent pending

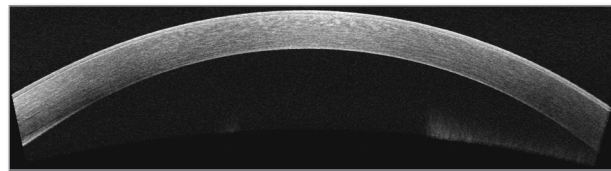


HD Angle scan of narrow angle with pterygium

HD Angle — High-resolution 6 mm angle image shows the key anatomical landmarks including scleral spur to aid in evaluation of the anterior chamber angle configuration.



Wide Angle-to-Angle scan — Dual-angle assessment with a 15.5 mm limbus to limbus view of iris configuration



HD Cornea Scan — 9 mm high-resolution scan details of corneal anatomy for assessing corneal health and pathology

External lenses combine with software to offer superior anterior segment imaging:

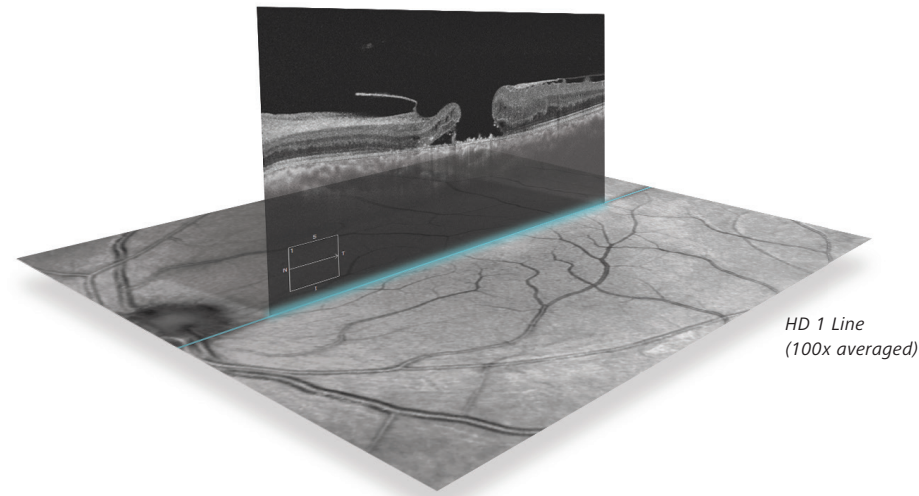
- Two interchangeable lenses expand CIRRUS HD-OCT with corneal, anterior chamber, and wide angle to angle imaging
- Magnetic lens attachment makes switching to external lenses easy and fast
- Ergonomic lens design enables a comfortable 22-38 mm working distance from the patient's eye



NEW Smart HD Scan Patterns

Targeted visualizations of critical anatomy

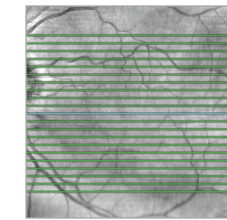
Automatic centering of scans ensures you see the fovea in each patient.



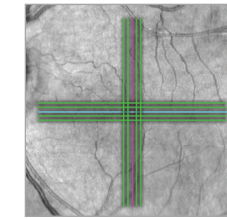
HD 1 Line
(100x averaged)

Details matter — Add flexible HD scans to your macular scanning protocol for an efficient visual assessment of macular status

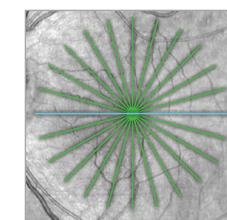
Get it right the first time — Improves clinic flow by helping to eliminate rescans due to missed fovea



HD 21 Line



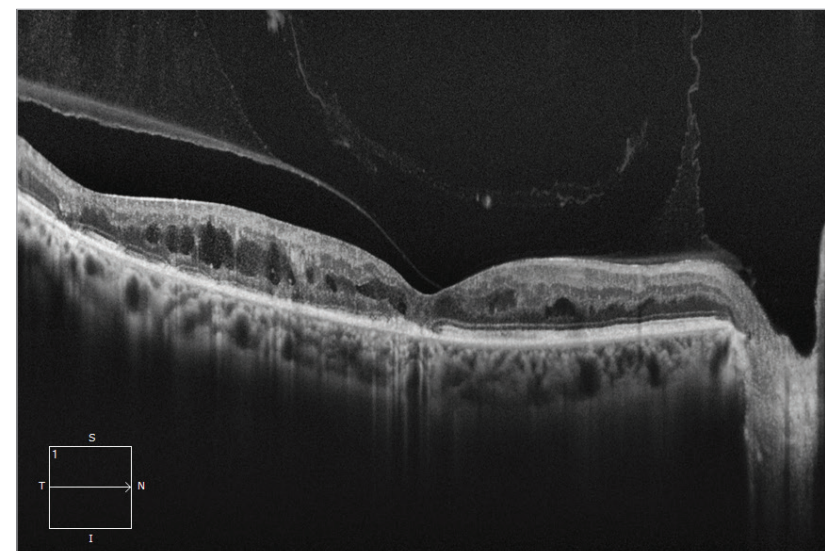
HD Cross



HD Radial

New Smart HD 1 Line scan

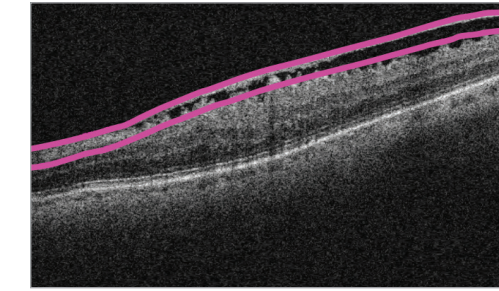
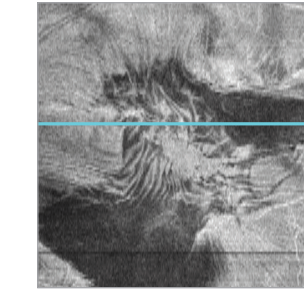
Captures and averages 100 b-scan images with automatic centering at the fovea or region of interest. The result is a brilliant image that simultaneously highlights detail in the vitreous, retina, and choroid.



NEW Layer by Layer En Face Views

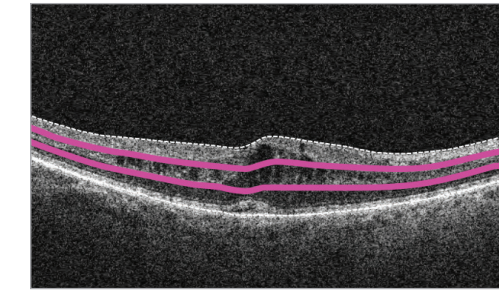
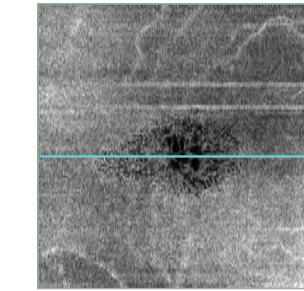
Reveal what lies beneath the surface

En Face VRI View



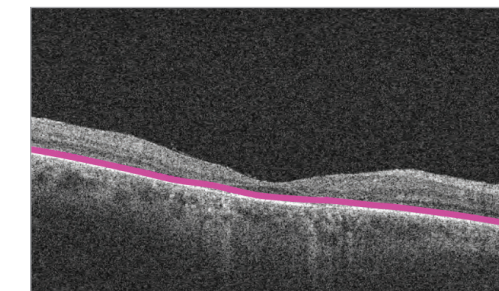
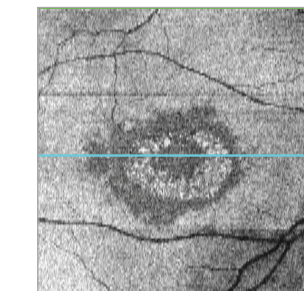
VRI en face preset display: Epiretinal membrane (ERM) example where the dark areas indicate membrane detachment

En Face Mid-Retina View



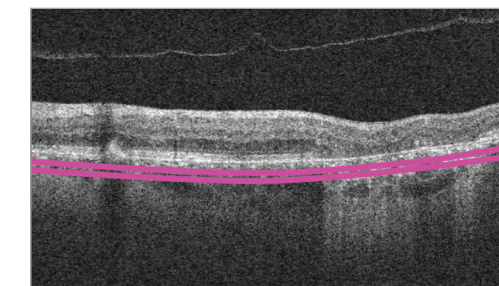
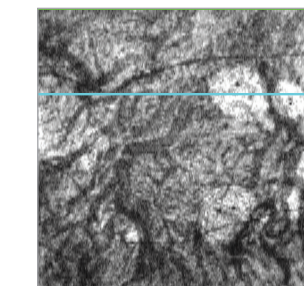
Mid-Retina en face preset display: Cystoid macular edema (CME) example with the hallmark flower petal pattern

En Face IS/Os-Ellipsoid View



IS/Os-Ellipsoid en face preset display: Hydroxychloroquine toxicity example with the classic bull's eye maculopathy

En Face Choroid View



Choroid en face preset display: Geographic Atrophy (GA) example where the bright regions highlight the RPE loss

Technical Data

CIRRUS™ HD-OCT 5000

New Software Version 7.5* includes:

En Face Analysis

PanoMap**

Optional licensed features:

Smart HD Scans

HD 1 Line 100x	1 Line (100x averaged)
HD 21 Line	21 Lines (4 or 8x averaged)
HD Radial	12 Lines (8x averaged)
HD Cross	10 Lines - 5 horizontal, 5 vertical (8x averaged)

Anterior Segment Premier Module with External Lens Kit

ChamberView™	15.5 mm x 5.8 mm
Wide Angle to Angle	15.5 mm x 2.9 mm
HD Cornea	9 mm x 2 mm
HD Angle	6 mm x 2.9 mm

CIRRUS 5000 Hardware/Computer Updates

Operating system/processor	Windows® 7, i7 processor (4th generation)
Memory	16 GB
Hard drive/internal storage	2 TB

CIRRUS Review Software supported Operating Systems

Windows 8.1
Windows 7
Windows Server 2008 R2

*Version 7.5 is compatible with CIRRUS Models HD-OCT 5000 and 500 only. Model 500 available with all listed features except Smart HD Scans.
** Requires Ganglion Cell Analysis license



Carl Zeiss Meditec, Inc.

5160 Hacienda Drive

Dublin, CA 94568

USA

www.meditec.zeiss.com/cirrus



Carl Zeiss Meditec AG

Goeschwitzer Str. 51-52

07745 Jena

Germany

www.meditec.zeiss.com/cirrus