

absMessage

System i Messaging

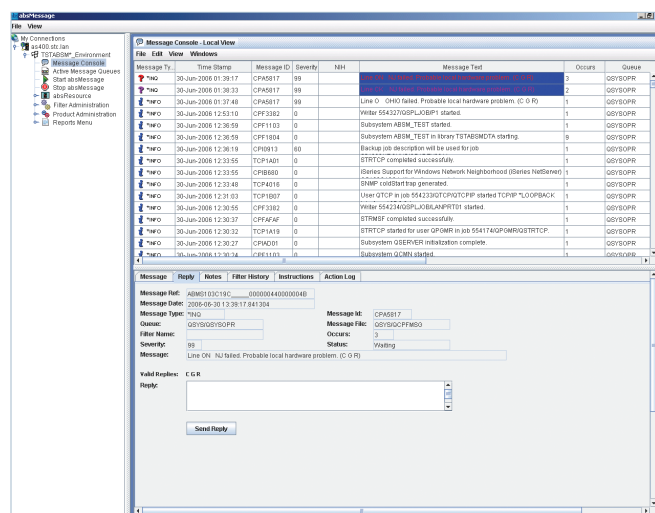


absMessage

Today's System i (AS/400) environments are increasingly complex. More and more critical enterprise applications and services are being moved to and hosted on the System i. In addition, many sites run several System i LPARS and it is not uncommon for a site to have several hundred or a thousand System i messages. Monitoring the activity and resources of this complex environment is critical. absMessage solves this problem by centralizing and automating resource and message monitoring, all available through green screen, java GUI, web interface and PDA handhelds - and all in one comprehensive solution!

MONITOR AND REACT

SEA offers one of the first tools on the market to help automate AS 400 systems, and eliminate system-related surprises and headaches. Now you can monitor and react to messages on critical system resources like processing, disk space or jobs, or create alerts on jobs and utilities. An operator, for example, can set an alert to email him that a backup was successfully completed, and can can reply to any messages via the platform of his choice - 5250, desktop GUI, web or smartphone.



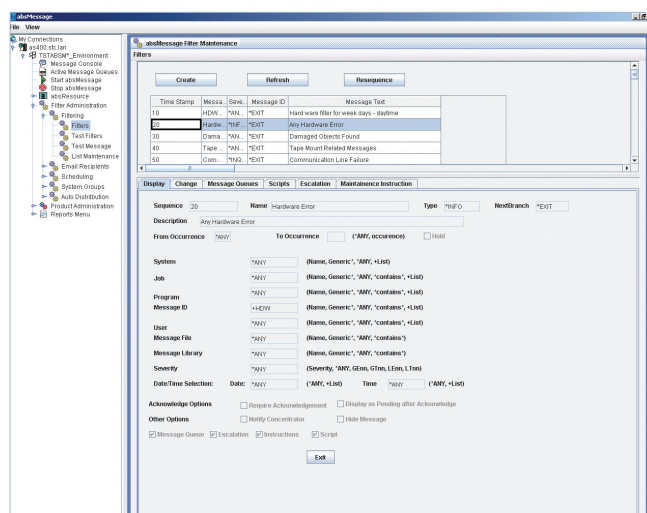
absMessage GUI screen of Message Console

LOCAL/NETWORK VIEW

absMessage provides a centralized view of messages for your local or networked System i machines. Users can define colors for each networked System i to be displayed in the absMessage network console. This gives operators the ability to sort messages in an easier and more efficient way. In addition to the system color coding, absMessage also color codes the messages that enter the console. Pending and informational messages appear in red, and inquiry messages that have been replied to or acknowledged appear in yellow.

NOTIFICATIONS, ESCALATIONS AND SCRIPTING

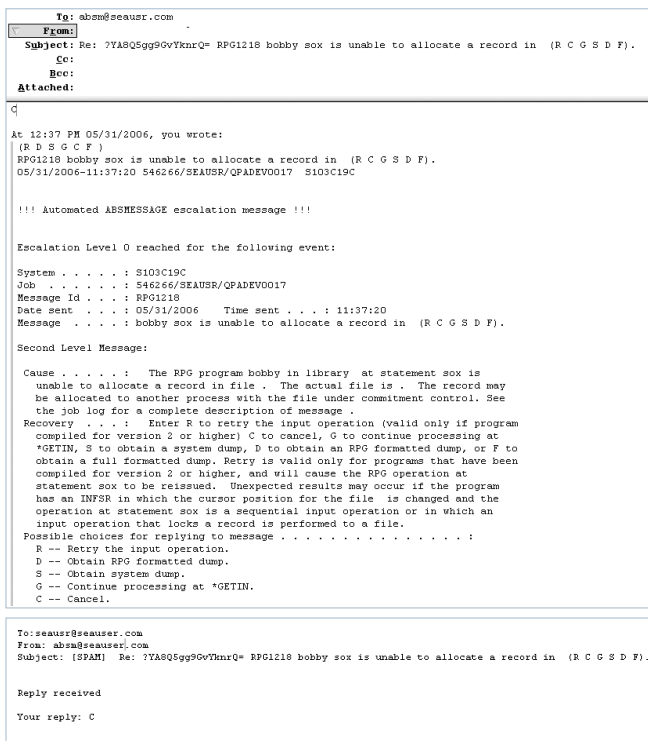
Using a built in email client, absMessage gives your organization the advantage of being notified once a message is generated on the system. Do you have SLA's established? Not a problem, you can setup escalation intervals and have multiple people notified that a message has gone unanswered. Not only can notifications and escalations be sent out, absMessage scripts can automate complex responses to messages. Scripts can conditionally reply to messages, execute commands or programs, as well as issue messages. absMessage filter processing can execute different scripts for the same message under different circumstances. For example, you may want to take action on the first occurrence, during business hours, and a different action during off hours.



Message filter maintenance

REPLY TO YOUR SYSTEM i MESSAGES VIA CELLULAR/EMAIL/PDA

When you have absMessage running on your System i, you can answer System i messages from anywhere! Whether you receive a record lock message, hardware error message or a tape drive message, you will never be caught off guard again. You can answer your System i messages as if you are in the office.



Message delivered via email and email reply

CALENDAR EVENTS PROCESSING

Calendar event processing provides the ability to handle messages during specific dates. For example, end of the month processing may require different message handling or the notification of different personnel than required during daily night processing.

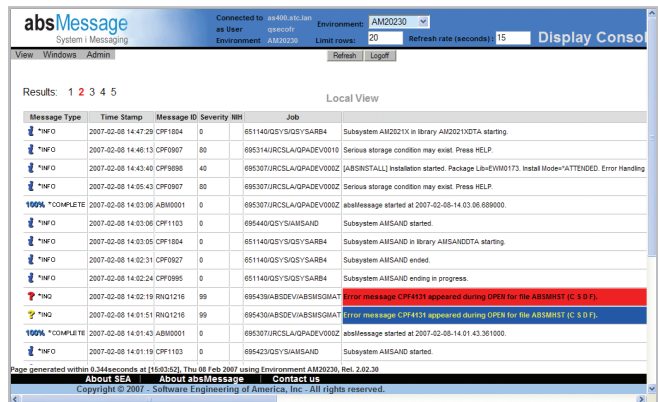
SNMP TRAP AND NETWORK SYSLOG SUPPORT

SNMP traps can be sent to network management products such as HP Openview and Cisco Netview.

ABSMESSAGE WEB CONSOLE

The absMessage Web Console gives System i users the ability to view messages on multiple systems from any internet web browser.

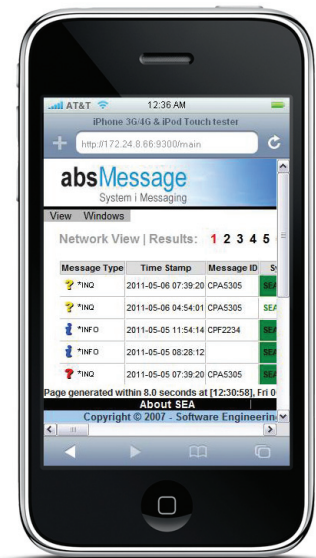
Using the absMessage web console you can manage your system messages in a local view for a single System i server and a network view for multiple servers. The absMessage web console also gives you the ability to view archived messages separately from live messages.



Message console in a web browser

ABSMESSAGE MOBILE

absMessage also comes standard with absMessage Mobile, an interface for handheld devices that provides true remote message and resource management. absMessage Mobile gives users the full functionality available with the absMessage web console in the palm of their hand.



CREATE SMART MESSAGE FILTERS

Filters can be defined to match specific, generic, wild cards or lists of values. Filtering can even scan message text or data for specific keywords.

Message filter definitions allow messages to be selected by:

- Message Type
- Job name
- Message File name
- Date method
- User name
- Message File library
- Time range
- Program name
- Message Severity
- Occurrence range
- Message Identifier
- Message Text

REMOTE INSTALL

absMessage simplifies management of multiple System i machines. The installation of absMessage can be deployed to a remote system without the need to log onto the target machine.

AUTO DISTRIBUTION OF MAINTENANCE, MESSAGE FILTERS AND CONFIGURATION

From your desk wherever in the world you may be, you can apply product fixes, upgrades, message filters and absMessage configurations to multiple machines globally. This configurability is part of a powerful set of change management techniques in which configurations may be managed from a single machine and then distributed to one or many other systems on the network. System management has never been easier!

ABSRESOURCE

absResource is a component of absMessage that can monitor system resources and generate messages or run scripts if utilization thresholds are exceeded. Monitor and react via email text message or command to resource conditions such as CPU utilization, DASD utilization, how many jobs are in a job queue, or determine if a specific job or subsystem is active on your machine.

QHST MONITORING / QAUDJRN MONITORING

Monitoring QHST is a must for most organizations. absMessage enables you to not only monitor message queues but to also monitor the history log and your audit journals. This provides you with an entire system monitoring tool.

MESSAGE ARCHIVING

With message archiving, you can save your system messages and any actions or replies associated with those messages for referencing at a later time if needed. These commands can be executed as part of your nightly update and restored with a click of a button.

REPORTING

absMessage comes pre-shipped with multiple reports that enable operators and administrators to investigate messaging tendencies and statistics.

SEA™

SOFTWARE ENGINEERING OF AMERICA®

Phone: 516.328.7000 • Fax: 516.354.4015 • www.seasoft.com

The imagery on the cover is reproduced courtesy of International Business Machines Corporation. Unauthorized use not permitted. All trademarks & copyrights are the property of their respective owners.