

absMessage

i5 Messaging

User Driven Software Solutions Since 1982

SEATM

SOFTWARE ENGINEERING OF AMERICA[®]

516.328.7000 • Fax: 516.354.4015 • www.seasoft.com
1230 Hempstead Turnpike, Franklin Square, New York 11010

SEA™

Company Overview



SOFTWARE ENGINEERING OF AMERICA®

www.seasoft.com

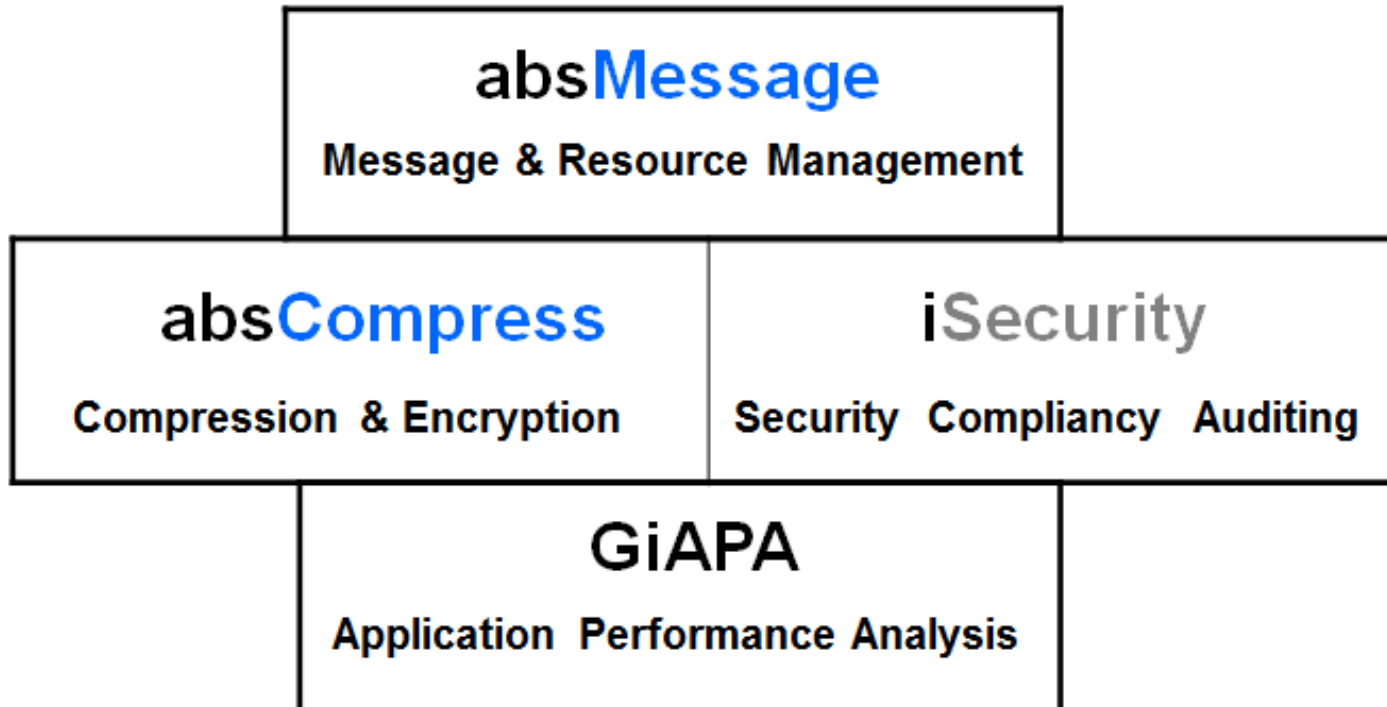


Company Overview



- 30 Years of Excellence
- 9 of the Fortune 10
- 85% of the Fortune 500
- Licenses in over 50 Countries

Company Overview





Company Overview

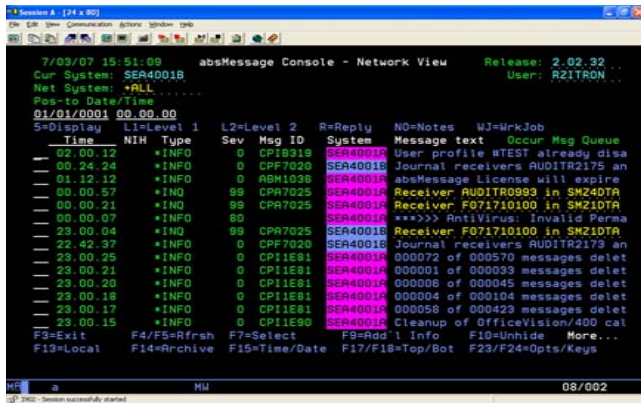


- **Support - Live Operator 24x7x365**
- **Always an SEA employee**
- **Planning**
- **Training**
- **Conversions Project**

absMessage

15 MESSAGING

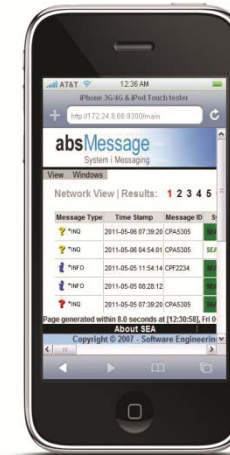
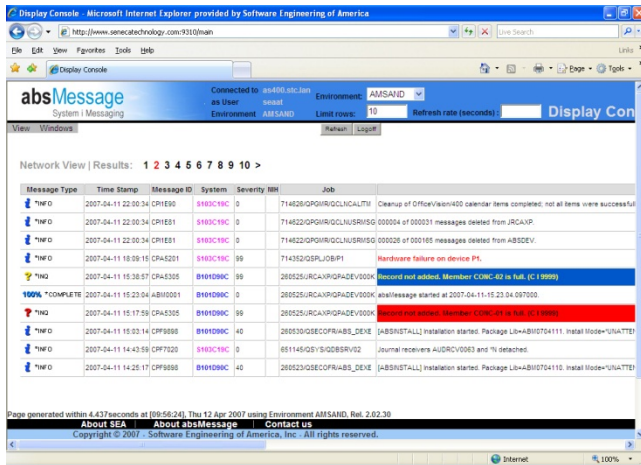
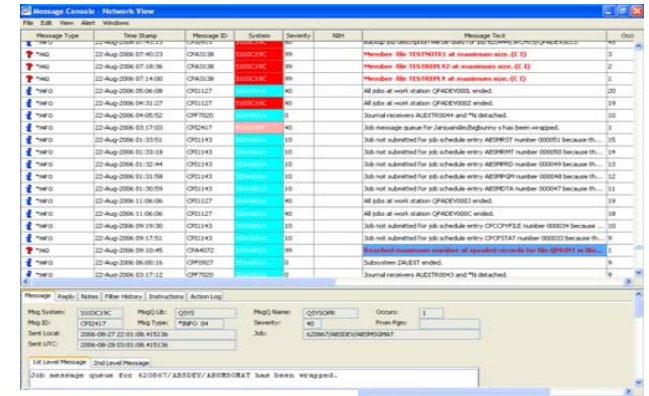
Console Capabilities



- Monitor the Following:
 - Any Message Queue
 - QHST

Views Provided:

- Local
- Network
- Archive



SEA™

SOFTWARE ENGINEERING OF AMERICA®
www.seasoft.com

absMessage

15 MESSAGING

Main Menu

The screenshot displays the absMessage software interface. On the left is a tree view of the system configuration, including 'My Connections', 'SEAABSM* Environment', 'Message Console', 'Active Message Queues', 'Start absMessage', 'Stop absMessage', 'absResource', 'Filter Administration', 'Filtering', 'Filters', 'Test Message', 'General List Mail', 'Message Access', 'Email Recipients', 'Scheduling', 'System Groups Maint', 'Product Administration', 'Message Queues', 'System Parameters', 'Security', 'Restricted State', 'Auto Distribution', 'Archives and Purging', 'Reports Menu', and another 'SEAABSM* Environment' instance.

The main window is titled 'Message Console: 172.24.8.80 (SEAABSM) - Network View'. It contains a table of messages with the following columns: Message Type, Time Stamp, Message ID, System, Severity, NIH, and Message Text. The table lists several messages, with some highlighted in red or blue. The selected message (Message ID: CPF7020, System: SEA4001B) is shown in detail below the table. The 'Message Reply Details' section includes fields for Message Ref, Message Date, Message Type, Queue, Filter Name, Severity, Message Id, Message File, Occurs, and Status.

Message Type	Time Stamp	Message ID	System	Severity	NIH	Message Text
*INQ	09-Jul-2007 05:03:28	CPA5305	SEA4001B	99		Record not added. Member is full. (C I S
*INFO	09-Jul-2007 04:54:06	CPF7020	SEA4001B	0		Journal receivers AUDITR2290 and *N detach
*INQ	09-Jul-2007 04:53:38	CPA5305	SEA4001B	99		Record not added. Member is full. (C I S
*INFO	09-Jul-2007 03:28:04	CPF7020	SEA4001B	0		Journal receivers AUDITR2289 and *N detach
*INFO	09-Jul-2007 03:12:45	CPA5305	SEA4001A	99		Record not added. Member is full. (C I S
*INFO	09-Jul-2007 01:58:25	CPF7020	SEA4001B	0		Journal receivers AUDITR2288 and *N detach
*INFO	09-Jul-2007 12:26:52	CPF7020	SEA4001B	0		Journal receivers AUDITR2287 and *N detach
*INFO	09-Jul-2007 10:55:20	CPF7020	SEA4001B	0		Journal receivers AUDITR2286 and *N detach
*INFO	09-Jul-2007 09:23:54	CPF7020	SEA4001B	0		Journal receivers AUDITR2285 and *N detach
*INFO	09-Jul-2007 07:57:13	CPF7020	SEA4001B	0		Journal receivers AUDITR2284 and *N detach
*INFO	09-Jul-2007 06:25:40	CPF7020	SEA4001B	0		Journal receivers AUDITR2283 and *N detach
*INFO	09-Jul-2007 04:54:04	CPF7020	SEA4001B	0		Journal receivers AUDITR2282 and *N detach
*INFO	09-Jul-2007 03:46:14	CPF7020	SEA4001A	0		Journal receivers AUDITR1028 and *N detach
*INFO	09-Jul-2007 03:22:32	CPF7020	SEA4001B	0		Journal receivers AUDITR2281 and *N detach
*INFO	09-Jul-2007 03:10:11	CPF7020	SEA4001A	0		Journal receivers AUDITR1027 and *N detach
*INFO	09-Jul-2007 02:32:38	CPF7020	SEA4001A	0		Journal receivers AUDITR1026 and *N detach

Message Reply Details

Message Ref: ABMSEA4001B_0000053A00000070
Message Date: 2007-07-09 06:25:40.905664
Message Type: *INFO
Queue: QSYS/QSYSOPR
Filter Name:
Severity: 0
Message Id: CPF7020
Message File: QSYS/QCPFMSG
Occurs: 48
Status: Not Applicable
Message: Journal receivers AUDITR2283 and *N detached.

- Reply to Messages
- Notes/Acknowledgements
- Action Log
- Instructions
- Message Filter History
- IBM's WRKPRB Message Handling

- Auto Reply To Messages
- Run Scripts
- 2-Way Email or Cell
- Email Escalation of Outstanding Messages
- Generate Test Messages / What If
- Monitor REPLIES to messages

absMessage

i5 MESSAGING

Email Maintenance

Configure Email Client

Send Parameters | Receive Parameters

SMTP Mail Server: mail.seasoft.com

SMTP Port: 25

IP Protocol: 3 0-IPv4(old) 1-IPv4(new) 2-IPv6 3-Default

SSL Version: 0 0-None 1-SSLv1 2-SSLv2 3-SSLv3 4-SSLv2&v3

Use STARTTLS: 0 Use STARTTLS to start SSL: 0-No 1-Yes

Authorization Type: 2 0-None 1-Plain 2-Login 3-CRAM-MD5

User ID: absmessage

Password: *****

Email Log Level: 0 0-None 1-Normal 2-Debug 3-Trace

Send Acknowledgements and Notes via email: Y

From Address: absMessage@seasoft.com

Mailer Name: SEA4001B System Message

Reply To: absMessage@seasoft.com

CC:

Save

- Built-In Email Client
- Multiple Protocol Support
- Email Recipient Panel

Maintain Email Recipients

Entry Name	E-mail Address	Description
SECURITY	security@demo.net	for security violations
RUSS	rzitron@seasoft.com	Russ's Email
SUPPORT	as400support@seasoft.com	... Support Email Address
HANK	hank@seasoft.com	Hank's Email
FRANCO	franco@seasoft.com	... Franco's Email
MEL	mzucker@seasoft.com	... Mel's Email Address

The screenshot shows the 'Filters' application window. At the top, there is a table listing filters. Below it, the 'Filter Details' tab is active, showing the configuration for the selected filter 'CheckQINTER'.

Seq	Name	Type	Next	Description	From Occ.	To Occ.	Sel. Date
10	CheckQINTER	*ANY	*EXIT	Check QINTER at 5AM	*ANY		*ANY
20	test	*ANY	*EXIT	test	*ANY		*ANY
30	CMD Errors	*ANY	*EXIT	Program Command Errors	*ANY		*ANY

Record 1 of 17

Filter Details | Message Queues | Scripts | Escalations | Maintain Instructions

Sequence: 10 Name: CheckQINTER [Edit]

Description: Check QINTER at 5AM

Type: *ANY (*INQ *INFO *ANY *COMP *DIAG *NOTIFY *ESCAPE *RQS)

Next Branch: *EXIT (*NEXT *EXIT)

From Occurrence: *ANY To Occurrence: (*ANY, occurrence)

System: *ANY (Name, Generic*, *ANY, +List)

Job: *ANY (Name, Generic*, *ANY, *contains*, +List)

Program: *ANY (Name, Generic*, *ANY, *contains*, +List)

User: *ANY (Name, Generic*, *ANY, *contains*, +List)

Message ID: ABM2036 (Name, Generic*, *ANY, *contains*, +List)

Message File: *ANY (Name, Generic*, *ANY, *contains*)

Message Library: *ANY (Name, Generic*, *ANY, *contains*)

Severity: *ANY (Severity, *ANY, GEnn, GTnn, LEnn, LTnn)

Date/Time Selection: Date: *ANY (*ANY, +List) Time: *ANY (*ANY, +List)

Message Text and Data Details: *ANY (*ANY, +List)

Acknowledge Options: Require Acknowledgement Display as Pending after Acknowledge

- Branching Capable
- Force Message Acknowledgement
- Filter Messages By:
 - * Job
 - * Message ID
 - * Program
 - * Day/Time
 - * User
 - * Message Text
 - * Severity
 - * And More....
- Filter List Capabilities

- Remote Installation
- Automated Distribution of Maintenance, Filters, and Configuration Options
- Simplified Change Management
- Remote Syslog Support
- SNMP Trap Support
- Reporting
- Archive / Purge

- Check Configuration Status
- Check CPU Utilization
- Check Jobs in Subsystem
- Check if Job Name is Active
- Check if Job Queue is on Hold
- Check Job Queue Jobs
- Check Spool File status
- Check if Job Queue is Released
- Check Job/Subsystem is Active
- Ping A TCP Device
- Check if Subsystem is Active
- Check if Subsystem has Ended
- Check Auxiliary Storage
- Check MQSeries
- Many More.....

SEATM
SOFTWARE ENGINEERING OF AMERICA[®]
www.seasoft.com

User Driven Software Solutions Since 1982

516.328.7000 • Fax: 516.354.4015
1230 Hempstead Turnpike, Franklin Square, New York 11010



Company Overview



- 29 Years of Excellence
- Top 100 Privately Held Companies

- **absMessage Provides:**

- Automated real-time reaction against messages and resources
- Resource checking of critical system activity
- Centralized message management
- Monitoring of system messages and resources from anywhere in the world
- Change Management
- Ease of use