

Advancing Eyecare. Every Step of the Way.

ZEISS Ophthalmic Solutions



Your partner for diagnosis, treatment, management and workflow

Every solution ZEISS creates must satisfy two high standards. It must deliver quality that improves patient care, and it must reward the practitioner's investment. At ZEISS, we have one commitment: be the best at our jobs so you can be the best at yours.

ZEISS partners with you to understand your challenges from the inside. We design all of our products specifically for you, the medical professional. Our solutions are integrated from the start to improve efficiency and precision. The end result is better workflow and better patient care.

For more information, contact:



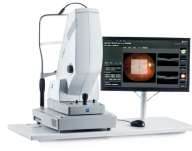
GLAUCOMA AND RETINA – DIAGNOSTICS



CIRRUS™ HD-OCT 5000/500
Each member of the CIRRUS family offers brilliant images and a tightly layered SmartCube™ for exquisite visualization and comprehensive analysis.



AngioPlex® OCT Angiography
ZEISS is ushering in a new era in retinal care. Now, ultra-clear 3D microvascular visualizations with non-invasive technology can be a routine part of your retina practice.



CIRRUS® photo
Fundus photography, fundus autofluorescence, CIRRUS OCT and angiography in one Smart Compact System.



CLARUS® and VISUCAM® Fundus Cameras
Legendary ZEISS optics for superior diagnostics detail and exquisite documentation. Ranging from non-mydratric, easy-to-use models to fully loaded tilt and swivel mydratric ultra-widefield cameras, ZEISS has a design to meet your needs.



Humphrey® Field Analyzer 3
Reaching new heights with the gold standard of perimetry, the HFA3 with SITA™ Faster 24-2 and 24-2C, Liquid Trial Lens™, SmartTouch™, Mixed Guided Progression Analysis™ (GPA™), Review software, and data synchronization provides a streamlined and faster clinical workflow.



Humphrey Matrix® 800
Proven to find early visual field loss, quickly and easily, the Matrix provides the ideal solution for busy practices for case detection and fast threshold testing.

ROUTINE DIAGNOSTICS



VISUREF® 100
Straight-forward and easy-to-use autorefractor/keratometer to conduct the most important measurements in a single device with reliable accuracy and efficiency.



VISUPLAN® 500 and VISUSCOUT® 100
A non-contact tonometer, the VISUPLAN 500 from ZEISS provides an intraocular pressure measurement that is fast and comfortable, making glaucoma screening easy. The ZEISS VISUSCOUT 100 handheld fundus camera allows simple retinal imaging and great flexibility whenever you need it.



VISULENS® 500
Automated lensmeter features six operating modes including progressive lens, hard and soft contact lens and UV transmission modes, yielding precise measurements to speed up the refraction and prescription process.



VISUSCREEN and VISUPHOR®
The acuity chart systems VISUSCREEN 100/500 and the digital phoropter VISUPHOR 500 from ZEISS offer refraction specialists a sophisticated, modular solution, combining comfort and convenience with speed and efficiency.



Slit Lamp Family
From daily routine to specialized examinations, SL 115, SL 120, SL 130 and SL 220 slit lamps from ZEISS combine high-resolution optical quality with proven features and are built to provide years of reliable service.

GLAUCOMA & RETINA – TREATMENT



VISULAS® Therapeutic Lasers
The complete line of photodisruption, photocoagulation and combination laser systems feature high-precision and legendary ZEISS optics for superior outcomes.

CATARACT/REFRACTIVE – DIAGNOSTICS



ATLAS™ 9000
The ATLAS 9000 delivers intuitive analysis and reporting for pathology detection, contact lens fitting, refractive surgery pre- and post-op assessment, and selection of premium IOLs .



IOLMaster® 700
The first to incorporate SWEPT Source OCT Biometry and Telecentric Keratometry, the ZEISS IOLMaster 700 provides unparalleled measurement speed, superior cataract penetration and market-leading measurement repeatability. With Total Keratometry (TK®) and two exclusive Barrett formulas, the IOLMaster 700 allows you to directly measure the posterior corneal surface.

RETINA – TREATMENT



OPMI LUMERA® 700, RESIGHT® and RESCAN™ 700
OPMI LUMERA 700 with RESCAN 700 is the first surgical microscope with integrated intraoperative OCT. Seamlessly integrating into your surgical workflow, the system adds a real-time third dimension to your visualization capabilities.

CATARACT – TREATMENT

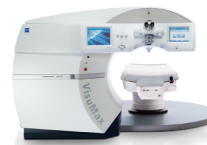


OPMI LUMERA®
This latest generation of surgical microscopes combines superior optical performance with ZEISS' patented SCi™ red reflex technology to provide cataract surgeons an unparalleled view of the surgical field.



CALLISTO eye®
A revolutionary product that enables surgeons to use patient biometry data to more precisely guide incision size and placement as well as centration and alignment of toric IOLs in the pursuit of better patient outcomes.

REFRACTIVE – TREATMENT



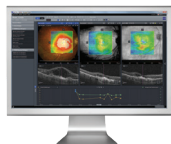
ReLex® SMILE®
A unique, minimally invasive laser vision correction procedure, ReLex SMILE is an innovative approach to myopia and astigmatism correction that is only available on the VisuMax femtosecond laser.



MEL® 80
Top quality ZEISS excimer laser designed to make the correction of vision defects more patient-friendly and individual while providing optimized ablation profiles for quality outcomes.

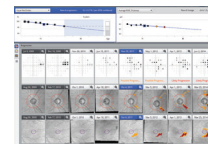
DATA MANAGEMENT

FORUM® Office
Comprehensive eye care data management centralizes data for easy access anywhere. It integrates data from ZEISS and non-ZEISS diagnostic devices and connects with most ophthalmic EMR/EHR systems.



Retina Workplace
ZEISS Retina Workplace is a fully integrated multimodality software solution that enables detection and comparison of pathological changes over time by combining exam data from OCT and fundus cameras across three visits onto one screen.

Glaucoma Workplace
ZEISS Glaucoma Workplace shows integration of HFA and CIRRUS analysis data in a single report. It also allows doctors to change the baselines for Guided Progression Analyses (GPA), assess changes in the rate of progression, and display the trend analysis based on the mean deviation (MD).



VERACITY™ Surgical
VERACITY Surgical offers comprehensive planning, seamlessly integrating data from EMRs and other devices. The platform synthesizes data needed at each step of the procedure, helping cataract surgeons work more efficiently, reduce risks associated with surgery planning, and improve surgery flow.