



**NEW**

## **VISULAS green from ZEISS**

Unparalleled workflow efficiency for laser therapy





**Stay focused  
on what counts.**

ZEISS VISULAS green

// INSPIRATION  
MADE BY ZEISS



## Give patients your undivided attention

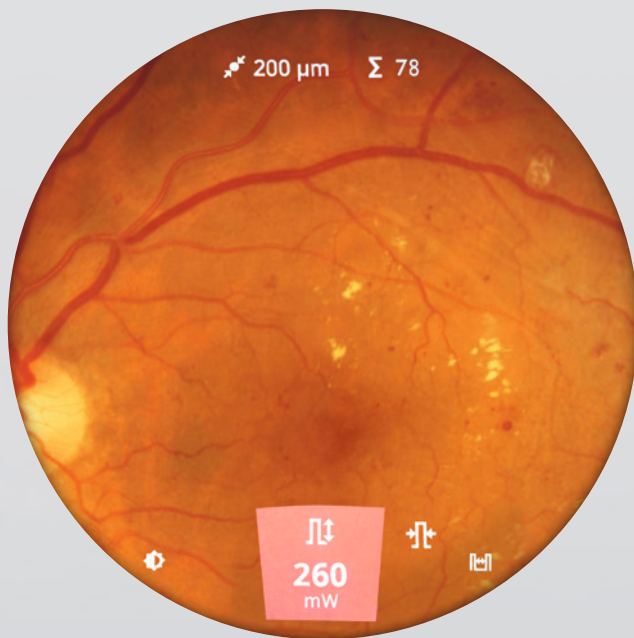
VISULAS® green from ZEISS was designed to reduce equipment related workflow interruptions and let you concentrate on your treatment and patient.

The next generation of VISULAS photocoagulators from ZEISS incorporates the unique combination of **InsightView** and **TouchControl** elements that help you to focus on the patient. Featuring a modular, compact design and an intuitive graphical user interface, ZEISS VISULAS green displays treatment summaries which can be exported for documentation.

Experience the unparalleled efficiency of ZEISS VISULAS green.

# Maximize your focus

ZEISS VISULAS green features a unique combination of InsightView display and TouchControl center switch to support easy, efficient and highly-focused surgical treatments for retinal diseases and glaucoma. ZEISS VISULAS green turns daily clinical routine into a more convenient and efficient treatment experience for you and your patients.



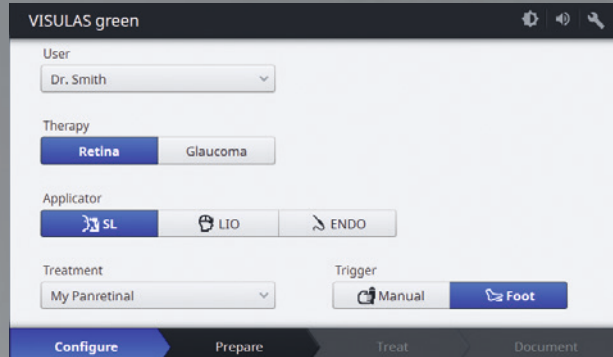
## **InsightView display**

The ability to monitor important treatment settings directly in the eyepiece allows you to stay focused on the therapy session and your patient.

## **TouchControl center switch**

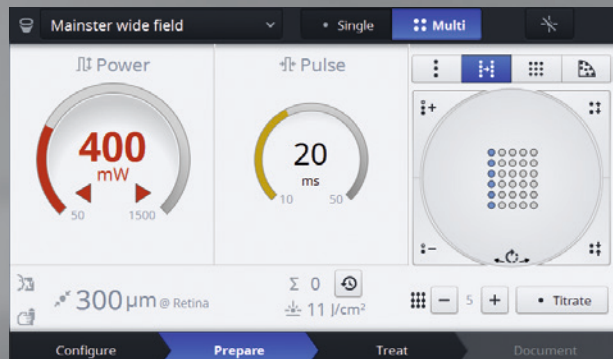
Changing and adjusting laser parameters while operating the joystick, allows you to stay concentrated on the procedure without any distractions.

# Increase workflow efficiency



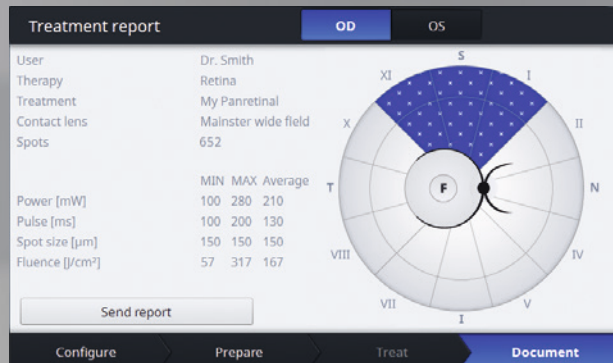
## Configure treatment protocols

Customize and save treatment protocols including your preferred contact lens for multiple users and recall them with one touch.



## Prepare and conduct treatment sessions

The intuitively designed and workflow-oriented user interface of ZEISS VISULAS green provides clear guidance and fast interaction.



## Simplify treatment documentation

Review the automated treatment parameter summary immediately after the procedure. Create a laser treatment report in the eye care data management system FORUM® from ZEISS, seamlessly and paperless.



## A customized system for maximum comfort

Designed as a modular and expandable laser workstation, ZEISS VISULAS green is available in a Classic and a Comfort model and is equipped with a choice of single or dual fiber ports. The Comfort model is upgradeable to handle multi-spot photocoagulation with the ZEISS *VITE* option to reduce treatment times. The results of a study conducted by Antje Röckl, MD and Marcus Blum, MD, demonstrated that pain was reported in fewer subjects.<sup>1</sup>

VISULAS green can be customized to suit virtually all types of practice workflows and treatment preferences. A wide range of ZEISS applicators such as laser slit lamp LSL green, VISULINK® 532/U slit lamp adapter, laser indirect ophthalmoscope LIO VISULAS green, or laser endoprobes and high quality accessories compliment the multi-faceted VISULAS green.

### ZEISS VISULAS green system options

Features	Classic	Comfort
	Laser console w/ <b>single</b> or <b>dual</b> fiber port	Laser console w/ <b>single</b> or <b>dual</b> fiber port
InsightView	Upgradeable	Yes
TouchControl center switch	Yes	Yes
TouchControl foot switch	Upgradeable	Upgradeable
Slit lamp magnification levels	8x, 12x, 20x	5x, 8x, 12x, 20x, 32x
<i>VITE</i> multispot photocoagulation option	No	Upgradeable
Joystick with manual trigger & electronic micromanipulator	Only with manual trigger	Yes
Automated treatment parameter summary	Yes	Yes
Ability to manage treatment data in ZEISS FORUM	Upgradeable	Upgradeable

<sup>1</sup> Röckl A, Blum M. *Multi-Spot Laser Coagulation with the Visulas 532S VITE : A Comparative Study of 101 Procedures*; Helios Kliniken Erfurt, Germany; Dept of Ophthalmology; 2010:8.

# Technical data

## VISULAS green from ZEISS

### ZEISS VISULAS green laser system

Laser type	Frequency-doubled solid-state laser
Wavelength	532 nm
Aiming beam	Diode, 620 to 650 nm, adjustable brightness, max. 1 mW at the cornea
Pulse duration (single pulse)	10 to 2,500 ms, cw (max. 180 s)
Pulse duration (multi-spot)	10 to 50 ms
Pulse duration (selective)	150 ns to 5 $\mu$ s
Pulse interval (single pulse)	10 to 6,000 ms
Max. power	1.5 W at the cornea
Cooling system	Thermoelectric
Rated voltage and frequency	100V to 240V AC, 50/60 Hz
Laser console dimensions	H 201 mm x W 230 mm x D 290 mm (H 79 inches x W 91 inches x D 114 inches)
Laser console weight	$\leq 7$ kg ( $\leq 15.4$ lbs)
Control panel weight	$\leq 3$ kg ( $\leq 6.6$ lbs)

### ZEISS LSL green laser slit lamp

Laser beam delivery	Interlaced with slit illumination system
Laser treatment spot size	Continuously adjustable, 50–1,000 $\mu$ m (without contact lens), parfocal, larger spot sizes depending on contact lens used
Illumination	12 V, 30W brightness continuously adjustable
Physician safety filter	True-to-color, fixed (ClearView®)

	Classic	Comfort
Magnification	8x, 12x, 20x	5x, 8x, 12x, 20x, 32x

#### Slit adjustment

Slit width	In steps	Continuous
	0.2/0.6/1.6/4.4/15.0 mm	0.0 to 14.0 mm
Slit height	In steps	In steps
	1/3/5/7/12/14/15 mm	1/3/5/9/14 mm
Slit image rotation	In steps	In steps
	0°/±45°/90°	0°/±45°/90°
Micromanipulator	Not available	Servo-electric
Weight	$\leq 11.5$ kg ( $\leq 25.3$ lbs)	
Accessories	Tonometer AT 030, co-observation tube, SL-cam 5.0, instrument table, laser safety goggles, contact lenses, laser warning light	



CE 0297



**Carl Zeiss Meditec AG**  
Goeschwitzer Strasse 51–52  
07745 Jena  
Germany  
[www.zeiss.com/visulasgreen](http://www.zeiss.com/visulasgreen)  
[www.zeiss.com/med/contacts](http://www.zeiss.com/med/contacts)



**Carl Zeiss Meditec, Inc.**  
5160 Hacienda Drive  
Dublin, CA 94568  
USA  
[www.zeiss.com/us/visulasgreen](http://www.zeiss.com/us/visulasgreen)

**LAS.10987** Printed in the United States. CZ-1W/2019 United States edition: Only for sale in selected countries. The contents of the brochure may differ from the current status of approval of the product or service offering in your country. Please contact our regional representatives for more information. Subject to changes in design and scope of delivery and due to ongoing technical development. VISULA 5, InsightView, TouchControl, VISULINK and FORUM are either trademarks or registered trademarks of Carl Zeiss Meditec AG or other companies of the ZEISS Group in Germany and/or other countries.  
© Carl Zeiss Meditec, Inc., 2019. All rights reserved.