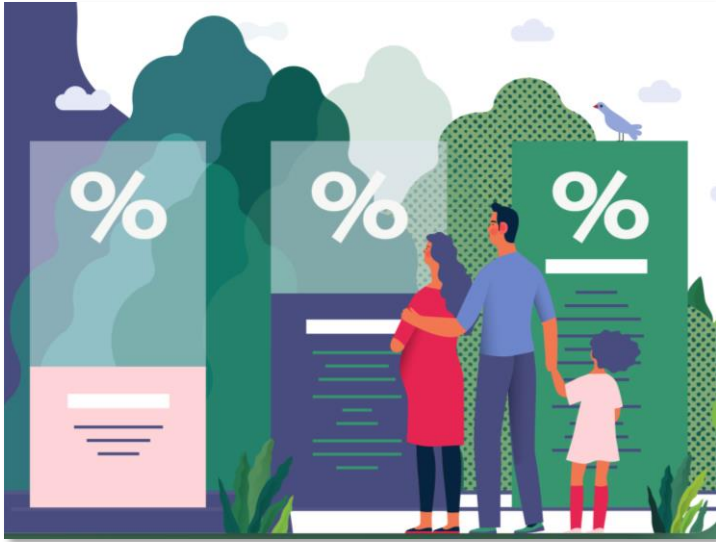


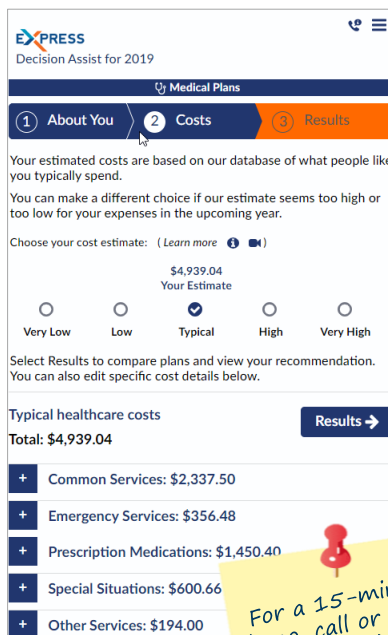
# How to decide? Copay... Deductible... Coinsurance... Out of Pocket Maximum!



## There's so much more to choosing the right medical plan.

Open Enrolment is the best time to help employees make great decisions. We all know most employees need guidance when it comes to choosing and using their benefits. When employees choose wisely and with confidence, they value their benefits more and, overall, feel more appreciation for their employer.

Using each **EMPLOYEE'S OWN DATA**, Tango Health Decision Assist™ software delivers step-by-step guidance for making complex health plan choices with confidence..



**EXPRESS**  
Decision Assist for 2019

Medical Plans

1 About You 2 **Costs** 3 Results

Your estimated costs are based on our database of what people like you typically spend.  
You can make a different choice if our estimate seems too high or too low for your expenses in the upcoming year.

Choose your cost estimate: ( Learn more ⓘ )

\$4,939.04  
Your Estimate

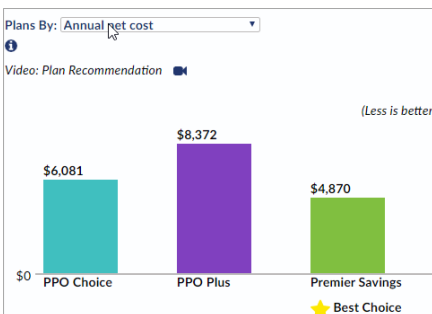
Very Low  Low  Typical  High  Very High

Select Results to compare plans and view your recommendation. You can also edit specific cost details below.

Typical healthcare costs  
Total: \$4,939.04

Results →

- + Common Services: \$2,337.50
- + Emergency Services: \$356.48
- + Prescription Medications: \$1,450.40
- + Special Situations: \$600.66
- + Other Services: \$194.00



- Easy-to-use, interactive software lets employees easily run multiple medical-spending scenarios to see the impact on plan choice
- Quick plan recommendation in ~ 3 minutes
- Detailed claims and aggregated peer data provide realistic spending baselines
- Robust analytics help you understand employee engagement and the success of your health plans
- It's a standalone tool and can seamlessly integrate with your current benefits platform

For a 15-minute demo, call or email.  
Ph: +1(925)956-0306.  
info@workforcejunction.com