

# Skybot Scheduler: Automate Your Enterprise

**S**kybot Scheduler™ is the complete enterprise scheduling and workload automation solution for your business needs. An enterprise operated by Skybot Scheduler runs more smoothly, reliably, and with fewer errors than those managed by human operators or dependent on time-based job schedules.

## More Than a Job Scheduler

Skybot Scheduler offers event-driven enterprise scheduling, central monitoring and notification, secure file transfer management, robust analysis tools and audit history, and graphical, runbook forecasting in one software package that you can install and deploy in minutes.

## Deploys in Minutes—Not Weeks

Skybot Scheduler is easy to install, set up, and use. You don't need an expensive on-site implementation team to set up Skybot Scheduler. And, after everything is connected, you can view and manage your entire enterprise from a web browser without having to install any software on your desktop computers.

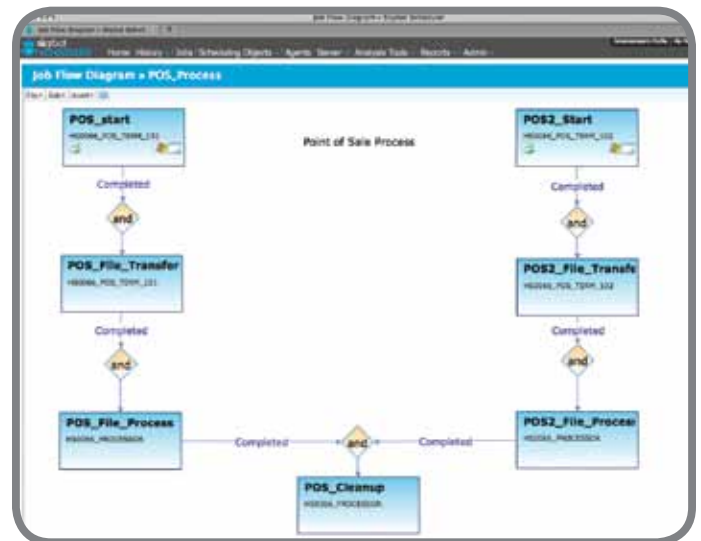
## Works Nights & Weekends So You Don't

Skybot Scheduler works overtime and weekends, so you don't have to. When one job finishes, it runs the next job in the schedule, and so on. No more camping out in the network operation center waiting for jobs to process or finish. Say goodbye to unnecessary overtime and hello to free nights, weekends, and holidays.

## Smooths Your Schedule

Many of the scheduling needs for Windows®, UNIX®, and Linux® servers are based on file arrival information or process starts and ends. Skybot Scheduler Agent Event Monitors let you monitor for events and react to them automatically. Your jobs run when they're supposed to—even when the triggering event is on another server.

Schedule forecasting is critical for running your operations. Just choose the time period and Skybot Scheduler forecasts your schedule. It shows the expected start time, run time, and prerequisite jobs. Use your forecast to shift



▲ The Job Flow Diagram shows relationships between jobs and event monitors that are dependent on each other.

the workload, maximize system usage, and determine whether you need upgrades.

Job Flow Diagrams give you a complete picture by displaying dependencies between jobs and system events in your enterprise. You can find holes in your workload processing, train new operators, and have a handy reference document for scheduling and planning meetings.

## Meets Your Service Level Agreements

Service Level Agreements (SLAs) mean that you've agreed to provide a certain level of service. Skybot Scheduler helps you keep your word. When a critical process stops or an important job fails, Skybot Scheduler can send an email or text message to an operator or a group of users; or an SNMP trap to open a problem ticket. With built-in notification, you'll easily meet your SLAs.

## Increases Productivity & Efficiency

Skybot Scheduler eliminates hundreds of programming hours needed to run your batch jobs and built-in depen-



▲ The Skybot Scheduler Dashboard helps you identify recent trends in your enterprise schedule.

dency processing. Just tell Skybot Scheduler how you want the batch job to run and it does the work. You don't need to bother anyone in the middle of the night because jobs ran out of order.

Use Skybot Scheduler's Dashboard to quickly identify and understand trends in your job schedule, event monitoring, and product setup. It contains charts and graphs based on recent schedule information. You see job activity during the last 7 days, which agent systems ran the most jobs, and how many Job Monitors, SNMP Traps, and Agent Events Skybot Scheduler processed.

## Satisfies Your Auditors

See detailed history of your jobs, agent event monitors, job monitors, and SNMP trap monitors. It's easy to find and fix problems quickly. You see a job's description, when it ran, how long it ran, how it completed, and its history.

Skybot Scheduler's Audit History is a big boost for complying with today's regulation requirements—Sarbanes-Oxley (SOX), PCI, and HIPAA. It tracks who created a new job or event monitor, who changed a job setup or commands, and who forced a job to run outside its scheduled time.

And, Skybot Scheduler lets you easily create electronic reports for job, agent, and event history; forecasting; and monitoring. Everything you, or an auditor, would want or need to know.

## Secures Your Environment

Skybot Scheduler role-based security ensures that your users can access only what they need to perform their jobs. You can secure product functions by department, division, location, customer, and more. It also makes managing user privileges easier for system administrators because they can change privileges for a group of users from one screen.

With Skybot Scheduler it's easy to securely transfer files to remote systems. Simply select a File Transfer System you want to send or receive the file from, and Skybot Scheduler does the rest.

## Runs With or Without Cron

It's easy to run your custom cron scripts because you can import Crontabs and convert them to Skybot Scheduler jobs. If you don't want to convert your cron jobs, you just include them in your Skybot Scheduler job commands. And, you can schedule jobs using familiar cron syntax and add event notification so that all processes are monitored for your SLAs.

## Fast—Easy—Automate!

Enterprise scheduling, monitoring, and notification has never been easier. To learn more about Skybot Scheduler contact your Automation Expert at 1-877-506-4786 or visit our website at [www.skybotsoftware.com](http://www.skybotsoftware.com).

## About Skybot Software

Skybot Software™ provides software solutions for enterprise systems and is backed by Help/Systems, LLC, the world's leader in IBM Power Systems automation software. With more than 28 years of job scheduling experience, Help/Systems knows what it takes to deliver industrial strength, high quality, and easy-to-use workload automation software. For more information, visit our website at [www.skybotsoftware.com](http://www.skybotsoftware.com), or contact your Automation Expert at 1-877-506-4786.