



SharePoint Site Migration Manager 2010

Migrate SharePoint sites, structures
list and library content between servers



Whether you are migrating between SharePoint servers, upgrading from SharePoint 2003 or 2007 to SharePoint 2010, or re-organizing your SharePoint content, SharePoint Site Migration Manager is an easy-to-use and convenient way of moving your SharePoint data. With its familiar copy-and-paste-style user interface, you can quickly migrate all SharePoint sites, libraries, lists, web parts and permissions between servers, while preserving metadata and document versions. It also lets you reorganize and re-template sites, lists and libraries during the process. With deep PowerShell integration in SSMM, SharePoint administrators can script and automate migration and content management tasks for complete automation. Because it uses only fully supported Microsoft methodologies and APIs, it does not affect existing Microsoft support agreements.

Key Features

- > **Easy to use**
Run your migration from an intuitive, Windows Explorer-style, graphical interface utilizing a familiar tree view and copy-and-paste actions.
- > **Migrate all list types**
Migrate Document Libraries, Issues, Tasks, Contacts, Announcements, Discussions and Custom Lists.
- > **Retain your valuable data**
Preserve all views, version chains, metadata, and user-edit information.
- > **Migrate Permissions**
Map and migrate site permissions from WSSv2/SPS 2003 and WSSv3/MOSS 2007 to SharePoint 2010 easily.
- > **Migrate Web Parts**
Migrate all out-of-the-box and custom web parts from WSSv2/SPS 2003 and WSSv3/MOSS 2007 sites to SharePoint 2010.
- > **Connect to multiple sites**
Connect to multiple SharePoint sites, across any number of servers, to consolidate or distribute your SharePoint data easily.
- > **Work remotely**
Do all the heavy lifting for your SharePoint migration from the convenience of your own machine. SharePoint Site Migration Manager connects to any SharePoint site that you can access with your browser -- even those outside your organization's intranet.
- > **Batch your work**
Batch multiple list migration operations for convenience and re-run them at any time. Run your migrations at night and view the results and logs in the morning. Once a job is created, use a PowerShell script to customize or execute it along with other administration processes.

Business Benefits

- > Flexibly migrate your existing content and take full advantage of the new collaboration and social computing features in SharePoint 2010
- > Maximize your investment in existing business-critical content with a high-fidelity content migration
- > Minimize impact on your information workers through gradual migrations with zero downtime
- > Reduce infrastructure costs by migrating to the cloud or to hosted SharePoint environments

Key Benefits

- > **Flexibly migrate SharePoint Sites, Lists and Libraries between servers with full fidelity**
Empower end users and administrators to move their content at the item, list, site or site collection level. Preserve all permissions, versions, views and metadata.
- > **Upgrade from SharePoint 2003 and SharePoint 2007 to SharePoint 2010**
Upgrade directly from WSSv2, SharePoint Portal Server 2003, WSSv3, SharePoint using Microsoft supported APIs.
- > **Reorganize or re-template sites during migration**
Re-define your site structure during migration. Split Sites and Site collections into multiple targets and re-template Sites. Administrators and content owners can define what content is migrated and when it is best to migrate that content. Convert team sites or 2007 wiki sites to SharePoint 2010 wiki sites.

metalogix

SharePoint* without Boundaries™

Build, manage, migrate, archive and recover critical content in SharePoint, Exchange and Files.

metalogix.com

> Compliant

We work closely with Microsoft to employ only supported best practices and we do not use any unsupported methods such as directly writing to the SharePoint database. Run migration activity only through the supported SharePoint APIs.

> PowerShell Enabled

With the rich PowerShell integration in SharePoint Site Migration Manager, administrators can easily script even the most complex migration scenarios and fully automate migration jobs through an intuitive user interface. Metalogix SSMM 2010 is the first SharePoint migration solution to allow users to capture any migration or content management task as a reusable script, which can then be customized using the flexibility and richness of PowerShell.

> Migrate from live sites, offline databases or backups

SharePoint Site Migration Manager provides native capabilities to migrate directly from unattached content databases to live sites, eliminating the need to build temporary farms. Simply point to an unattached database, extract the data directly and migrate it into a live SharePoint 2010 environment.

> Distribute the Workload

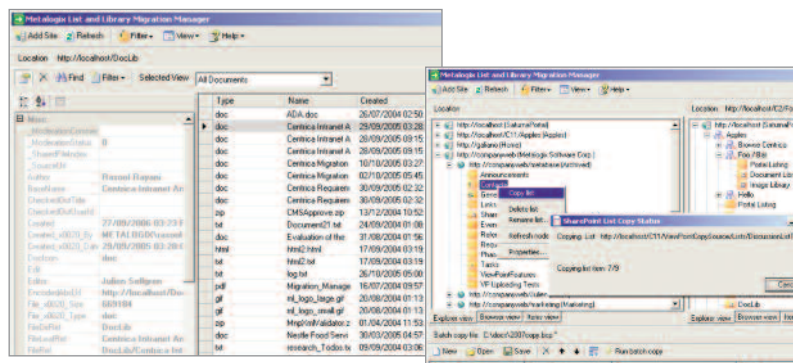
Use SSMM to delegate and distribute migration efforts to individual departments or content owners. This reduces IT workload, enhances buy-in, speeds up the adoption of the new system, and improves decision-making as your content can be reorganized to reflect current business needs. You can manage a distributed workload because SharePoint Site Migration Manager reads and writes only to the supported SharePoint APIs, respecting the security trimming (or model) of the content. Content owners simply need read access to their source sites using the SSMM client, along with write access to their new target locations.

> Compare your data

Compare data between environments or between SharePoint versions easily, with SharePoint Site Migration Manager's powerful differential reporting capabilities. Compare content between a live site and QA, or between a backup file and the live SharePoint site, to see instantly what has been added, modified or deleted.

> Support for Migration to SharePoint Online (BPOS)

SSMM fully supports scenarios where existing content is migrated to SharePoint Online or any hosted SharePoint environment that is part of the Business Productivity Online Suite (BPOS). Move SharePoint hardware and support into the 'cloud' quickly and easily, eliminating the need to support local SharePoint hardware and infrastructure. In addition, SSMM supports 'cloud-to-cloud' migrations, so organizations can move content from one hosted provider to another.



> Migrate from live SharePoint servers or an offline content database
Migrate from test or live staging environments or from an offline database using snapshots for maximum flexibility. Eliminate the need to build temporary farms and attach live databases for a migration.

> Support complex migration scenarios with rich support for Windows PowerShell scripting
Support complex migration scenarios with custom business logic via PowerShell. Customize your migration tasks to achieve even the most sophisticated and complex use cases.

New in This Version

- > PowerShell Integration
- > Support for SharePoint 2010
- > Improved logging and job management
- > Support for unattached database migration and search

Supported Source Systems

- > SharePoint Portal Server (SPS) 2003
- > Windows SharePoint Services (WSS) v2
- > Microsoft Office SharePoint Server (MOSS) 2007
- > Windows SharePoint Services (WSS) v3
- > SharePoint Server 2010
- > SharePoint Foundation 2010
- > SQL Server 2000, 2005, and 2008 SharePoint databases
- > Microsoft Online Services (MOS) [a.k.a. BPOS, SharePoint Online] Standard and Dedicated versions

For additional information, please contact us directly at sales@metalogix.com or call 877-450-8667.

Sign up at www.metalogix.com to receive an evaluation copy.

metalogix[®]

SharePoint® without Boundaries™

Build, manage, migrate, archive and recover critical content in SharePoint, Exchange and Files.

Copyright © Metalogix Software 2010. SharePoint Site Migration Manager and PAM for Exchange are trademarks of Metalogix Software. All other trademarks are the property of their respective companies.

metalogix.com