

# ACCELERATE, COMPRESS & ENCRYPT DATABASE BACKUPS

## SQL safe backup™

SOLUTIONS FOR BACKUP & RECOVERY

Idera SQLsafe backup provides a high-performance backup and recovery solution for Microsoft® SQL Server®. SQL safe backup saves money by reducing database backup time by up to 50% over native backups and reducing backup disk space requirements by up to 95%. SQL safe backup also enables complete 'hands-free' automated backup of your entire SQL Server infrastructure and ensures compliance with your organization's backup and recovery policies. From implementations with tens of SQL servers to enterprises with thousands of servers spread around the globe, SQL safe backup is the only SQL Server backup and recovery solution that scales to meet the challenge.

### PRODUCT HIGHLIGHTS

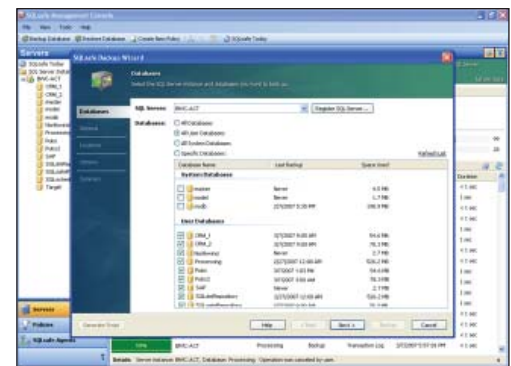
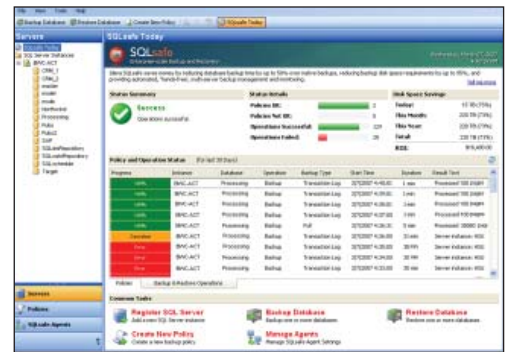
- Fast, compressed & encrypted backup and restore
- Save space – compress files by up to 95%
- Save time – at least 50% faster than native backups
- Central management of backups enterprise-wide
- Object level recovery of tables

*The SQL safe backup management console makes it fast and easy to execute backup and restore operations on multiple servers and databases at the same time. Real-time monitoring and a repository of historical information ensure that your critical backup and recovery operations are easily and effectively managed.*

*The SQL safe backup innovative IntelliRestore feature provides graphical point in time recovery using a sliding time scale. Simply choose a point in time and SQLsafe backup will automatically assemble all the backup components necessary to restore the database to the specified point in time.*

*"Now that we have SQL safe backup, full backup time on one of our servers is down from 100+ hours to 30 hours or less. This is an incredible time considering the amount of data we're backing up!"*

- DATA/SYSTEM ARCHITECT, HEALTHCARE INFORMATION SERVICES COMPANY



### WHY SQL safe backup?

In many organizations today, SQL Server databases are the repository for large volumes of business critical data. As database size grows, the time required for backup via native tools can easily exceed maintenance windows. Restore operations also become time-consuming, and huge amounts of storage space are needed for the backups. DBAs need a powerful backup and recovery solution that greatly reduces backup and recovery time, minimizes storage requirements, and provides enterprise management capabilities to conduct backups across a large numbers of servers simultaneously. SQL safe backup has been specifically designed to meet these requirements, resulting in increased application and business availability for your critical SQL Server infrastructure.



DOWNLOAD A FREE EVALUATION TODAY AT [WWW.IDERA.COM](http://WWW.IDERA.COM)

# SQL safe backup

## ACCELERATE, COMPRESS & ENCRYPT DATABASE BACKUPS

### KEY BENEFITS

**Increases SQL Server availability:** SQL safe backup contains highly advanced compression, disk writing and multi-threading technologies that dramatically increase the speed of backup execution. By reducing backup time, this increases the available window for you to perform other critical SQL Server maintenance activities.

**Reduces storage requirements:** SQL safe backup includes state-of-the-art variable compression that technology reduces the size of the backup output files by as much as 95%, resulting in significantly reduced storage costs and simplified backup and recovery strategies for very large databases.

**Accelerates mean time to recovery:** SQL safe backup has been engineered to perform well when you most need it – in an emergency recovery situation. With innovative IntelliRestore™ graphical point-in-time recovery, DBAs simply use a sliding time scale to select a recovery point and SQL safe backup automatically assembles all the backup components necessary to restore the database to the specified point in time. SQL safe backup can also perform table level recovery from a SQLsafe backup file.

**Enterprise scalability and manageability:** SQLsafe has been specifically designed to support large SQL Server installations. The SQL safe backup enterprise console and enterprise management engine enable you to perform backup and restore operations across large numbers of servers simultaneously, monitor execution in real time and store a complete history of all backup and restore operations in the central repository.

**Ensures compliance with corporate backup policies:** SQL safe backup offers unique policy-based backup management, which enables DBAs to define and automate a backup schedule across multiple servers and databases. This greatly simplifies the task of setting up and managing backup schedules, and provides exception reporting to highlight any backup jobs that did not complete as scheduled.

### TECHNICAL FEATURES

#### HIGH PERFORMANCE BACKUP AND RECOVERY

- **IntelliCompress™ Technology:** Provides state of the art compression that continually samples the data and automatically selects the best compression method from over 20 approaches.
- **IntelliRestore:** Offers innovative IntelliRestore™ graphical point in time recovery. Using a sliding time scale, choose a point in time, and SQL safe backup will automatically assemble all the backup components necessary to restore the database to the specified point in time.
- **Encryption:** Provides built-in encryption with user-selectable encryption algorithms (DES, Triple DES, RC2 and Rijndael) enabling you to select the optimum approach to meet security and performance requirements.
- **Object Level Recovery:** Saves valuable time in recovery situations by restoring a single table rather than waiting to restore the entire database.
- **Backup Mirroring:** Quickly and easily write duplicate backup files to different locations during a single backup operation.
- **Runs outside SQL Server Process space:** Eliminates risk and increases performance by running as a separate process outside the SQL Server process space. SQL safe backup does not install any additional databases, DLLs, scripts, stored procedures or tables on the SQL Server instances.

#### ENTERPRISE MANAGEMENT FEATURES

- **Centralized Management Console:** Provides a central enterprise console with real-time monitoring of current backup and restore operations as well as historical backup and restore information.
- **Central Repository:** All backup and restore information is stored in a central repository to enable full auditing of backup history across the enterprise.
- **Backup and Log Shipping Policies:** Quickly and easily create, manage and monitor backup and log shipping jobs to ensure backups and restores perform as specified.
- **Alerting:** Receive an SMTP email or event log alert when failures or missed operations occur in your environment.

- **Reports:** Provides a comprehensive catalog of customizable reports delivered using Microsoft SQL Server Reporting Services.
- **Tivoli Storage Manager Integration:** Provides an interface to IBM Tivoli Storage Manager (TSM) for permanent, state-of-the-art storage of SQLsafe backup files.
- **Scriptable Interface:** Provides multiple interfaces –enterprise console, command-line and XSP.

### SYSTEM REQUIREMENTS

#### MANAGEMENT CONSOLE,

- Windows 2000 SP3+, Windows XP, Windows Server 2003 (32- and 64-bit), Windows 2008, Windows Vista
- Microsoft .NET 2.0

#### MANAGEMENT SERVER AND DATA REPOSITORY:

- 32-bit Windows 2000 SP4, Windows XP SP2, Windows Server 2003 SP1+, Windows 2008 or Windows Vista
- 64-bit Windows Server 2003 SP1 (x64), Windows Server 2003 SP1 (Itanium 2), Windows 2008 or Windows Vista
- Microsoft .NET 2.0
- Repository: SQL Server 2000 SP4, SQL Server 2005 SP1+ (32- and 64-bit), SQL Server 2008 (Feb CTP)

#### BACKUP AGENT:

- 32-bit Windows 2000 SP4, Windows XP SP2, Windows Server 2003 SP1+, Windows 2008 or Windows Vista
- 64-bit Windows Server 2003 SP1 (x64), Windows Server 2003 SP1 (Itanium 2), Windows 2008 or Windows Vista

- Microsoft .NET 2.0
- SQL Server 7.0 SP4, MSDE 2000 SP4, SQL Server 2000 SP4 (32- and 64-bit), SQL Server 2005 SP1 (32- and 64-bit), SQL Server 2005 Express, SQL Server 2008\*

#### SUPPORTED SQL SERVER ENVIRONMENTS (FOR BACKUP AND RECOVERY):

- SQL Server 7.0 SP3+, MSDE 2000 SP3+, SQL Server 2000 (all versions and service packs, 32- and 64-bit), SQL Server 2005 Express, SQL Server 2005 (all versions and service packs, 32- and 64-bit)

#### SUPPORTED TSM ENVIRONMENTS

- TSM Client version 5.2.2.0, 5.3.2.0, 5.3.3.0, 5.3.4.0, 5.4, 5.5  
TSM Server version 5.2, 5.3, 5.4, 5.6

\*Object Level Recovery is not supported on SQL Server 2008

SQL safe backup does not require the installation of any additional databases, DLLs, scripts, stored procedures, or tables on the SQL Server instances.

Idera | BBS Technologies

802 Lovett Blvd Houston, Texas 77006

PHONE 713.523.4433 | TOLL FREE 877.GO.IDERA (464.3372)

FAX 713.862.5210 | WEB [www.idera.com](http://www.idera.com)



DOWNLOAD A FREE EVALUATION TODAY AT [WWW.IDERA.COM](http://WWW.IDERA.COM)