

Idera's SQL safe provides a high-performance backup and recovery solution for Microsoft SQL Server. SQL safe saves money by reducing database backup time by up to 50% over native backups and reducing backup disk space requirements by up to 95%. SQL safe also enables complete 'hands-free' automated backup of your entire SQL Server infrastructure and ensures compliance with your organization's backup and recovery policies. From implementations with tens of SQL servers to enterprises with hundreds of servers spread around the globe, SQL safe is the only SQL Server backup and recovery solution that scales to meet the challenge.

## WHY SQL SAFE?

In many organizations today, SQL Server databases are the repository for large volumes of business critical data. As database size grows, the time required to complete the scheduled backups can easily exceed maintenance windows. Restore operations also become time-consuming and huge amounts of storage space are needed for the backups. DBAs need a powerful backup and recovery solution that greatly reduces backup and recovery time, minimizes storage requirements, and provides enterprise management capabilities to conduct backups across a large numbers of servers simultaneously. SQL safe has been specifically designed to meet these requirements, resulting in increased application and business availability for your critical SQL Server infrastructure.

## PRODUCT HIGHLIGHTS

- Fast, compressed & encrypted backup and restore
- Save space – compress files by up to 95%
- Save time – at least 50% faster than native backups
- Central management of backups enterprise-wide

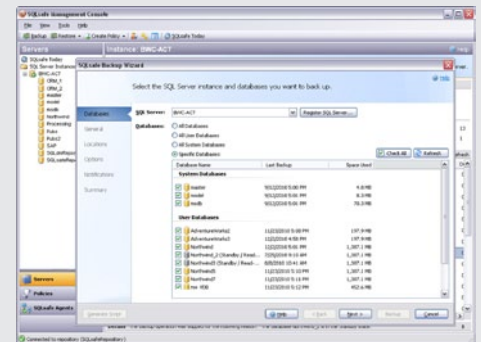
“Now that we have SQL safe, full backup time on one of our servers is down from 100+ hours to 30 hours or less. This is an incredible time considering the amount of data we're backing up!”

- Data/System Architect  
Healthcare Information Services Company

## Compress & Encrypt SQL Server Backups



SQL safe enables complete, “hands-free”, automated management of your entire SQL Server backup infrastructure and ensures compliance with your organization's backup and recovery policies.



## SQL safe is easy to use

User-friendly wizards are provided for all key tasks. The backup wizard shown here allows you to quickly execute backup operations across multiple databases, which can be performed simultaneously, or they may be scheduled to execute one at a time.

## SYSTEM REQUIREMENTS

### Management console

- Windows 2000 SP4, Windows XP SP3, Windows 2003 SP2, Windows 2008 SP1, Windows Vista SP1, Windows 7, Windows 2008 R2
- Microsoft .NET 2.0 SP1

### Management server and data repository

- Windows 2000 SP4, Windows XP SP3, Windows Server 2003 SP2, Windows 2008, Windows Vista SP1, Windows 7, Windows 2008 R2
- Microsoft .NET 2.0 SP1
- Repository: SQL Server 2000 SP4, SQL Server 2005 SP1+, SQL Server 2008, SQL Server 2008 R2

### Backup agent

- Windows 2000 SP4, Windows XP SP3, Windows Server 2003 SP2, Windows 2008 SP1, Windows Vista SP1, Windows 7, Windows 2008 R2
- Microsoft .NET 2.0 SP1
- SQL Server 7 SP3+, SQL Server 2000 SP4, SQL Server 2005 SP1+, SQL Server Express, SQL Server 2008, SQL Server 2008 R2

### Supported TSM environments

- TSM Client version 5.4, 5.5, 5.6, 6.1, 6.2 TSM Server version, 5.4, 5.5, 5.6, 6.1, 6.2 R2

## TECHNICAL FEATURES

### HIGH PERFORMANCE BACKUP AND RECOVERY

- **IntelliCompress2™ Technology:** Provides state of the art technology that continually samples system resources and automatically adjusts the compression level to produce the smallest backup in the fastest possible time.
- **IntelliRestore:** Offers innovative IntelliRestore™ graphical point in time recovery. Using a sliding time scale, choose a point in time, and SQL safe backup will automatically assemble all the backup components necessary to restore the database to the specified point in time.
- **Network Resilient:** Eliminate backup and restore failures due to temporary network outages by pausing and then resuming from the point where it left off once the network comes back online.
- **Encryption:** Provides AES 128 and AES 256-bit encryption with less than 0.5% performance degradation.
- **Backup Mirroring:** Quickly and easily write duplicate backup files to different locations during a single backup operation.
- **Login Copy:** Bring recovered databases online faster by allowing SQLsafe to create missing SQL Server logins and resolve any orphaned database users..

### ENTERPRISE MANAGEMENT FEATURES

- **Centralized Management Console:** Provides a central enterprise console with real-time and historical monitoring of backup and restore operations as well as provide central job management capabilities.
- **Central Repository:** All backup and restore information is stored in a central repository to enable full auditing of backup history across the enterprise.
- **Backup, Restore and Log Shipping Policies:** Define backup, restore and log shipping policies and monitor to ensure backups and restores perform as specified.
- **Alerting:** Receive alerts on the result of any operation, including failures, warning, misses or even successful operations in your environment.
- **Reports:** Provides a comprehensive catalog of customizable reports delivered using Microsoft SQL Server Reporting Services.
- **Tivoli Storage Manager Integration:** Provides an interface to IBM Tivoli Storage Manager (TSM) for permanent, state-of-the- art storage of SQL safe backup files.
- **Scriptable Interface:** Provides multiple interfaces – enterprise console, command-line and XSP.

## KEY BENEFITS

### Maximizes backup file compression

SQL safe's new patent-pending IntelliCompress2™ technology continually samples system resource usage and automatically adjusts the compression level to ensure the best compression given the state of the environment.

### Reduces backup time dramatically

SQL safe contains highly advanced compression, disk writing and multi-threading technologies that dramatically increase the speed of backup execution. Reducing backup time increases the available window in which to perform other critical SQL Server maintenance activities.

### Reduces failures due to network glitches

SQL safe greatly reduces the possibility of a failure due to a network problem. If a temporary network outage occurs, SQL safe will simply pause and pick up where it left off once the network is back online.

### Accelerates mean time to recovery

SQL safe has been engineered to perform well when you most need it – in an emergency recovery situation. With SQL safe's innovative IntelliRestore™ graphical point-in-time recovery, DBAs simply use a sliding time scale to select a recovery point and SQL safe automatically assembles all the backup components necessary to restore the database to the specified point in time.

### Ensures compliance with corporate policies

SQL safe offers unique Policy-based management which enables DBAs to define and automate a backup, restore or log shipping schedule across multiple servers and databases. This greatly simplifies the task of setting up and managing backup and log shipping schedules and provides exception reporting to highlight any jobs that did not complete as scheduled.



Idera is headquartered in Houston, TX with offices in London and Melbourne.

US	+1 713 523 4433 877 GO IDERA (464 3372)
EMEA	+44 (0) 1753 218410
APAC	+61 1300 307 211
MEXICO	+52 (55) 8421 6770
BRAZIL	+55 (11) 3230 7938

WEB	<a href="http://www.idera.com">www.idera.com</a>
TWITTER	<a href="http://www.twitter.com/Idera_Software">www.twitter.com/Idera_Software</a>
FACEBOOK	<a href="http://www.facebook.com/IderaSoftware">www.facebook.com/IderaSoftware</a>
LINKEDIN	<a href="http://www.linkedin.com/groups?gid=2662613">www.linkedin.com/groups?gid=2662613</a>