

# SQL diagnostic manager™

SQL Server performance monitoring, alerting & diagnostics

SQL diagnostic manager is a powerful performance monitoring and diagnostics solution that proactively alerts administrators to health, performance, or availability problems within their SQL Server environment via a central console or mobile device. SQL diagnostic manager minimizes costly server downtime by providing agent-less, real-time monitoring and customizable alerting for fast diagnosis and remediation of SQL Server performance and availability problems. SQL diagnostic manager also provides a 'community' environment where, using Idera's IntelliFeed™ technology DBAs form a community to collaborate to quickly resolve problems, perform maintenance, and capture best practices.

## WHY SQL DIAGNOSTIC MANAGER?

In many organizations today, SQL Server supports business critical applications where server downtime or poor performance has an immediate impact on business productivity. As a result, ensuring SQL Server performance and availability is arguably the most critical function for DBAs today. At the same time, SQL Server DBAs are tasked with supporting constantly growing SQL Server deployments with limited resources. In order to effectively manage these growing environments, DBAs need reliable, real-time information on the status and health of their complete SQL Server environment, along with diagnostic tools to quickly pinpoint and resolve performance issues. SQL diagnostic manager meets these needs by monitoring the performance of all SQL Servers and providing the most comprehensive SQL Server diagnostics on the market.

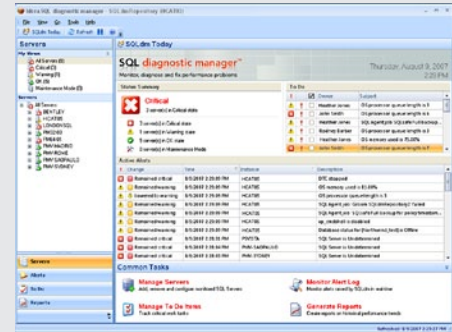
## PRODUCT HIGHLIGHTS

- Monitor and manage SQL Servers enterprise-wide
- Find and fix performance bottlenecks
- Analyze performance over time
- Diagnose and resolve issues from the desktop or mobile device
- No agents or database objects required on monitored servers

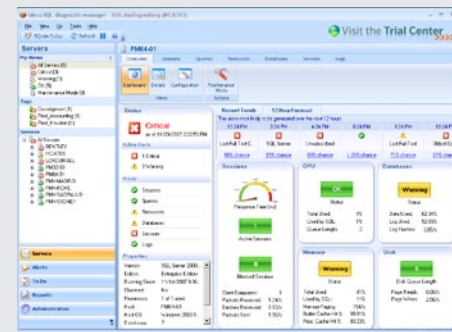
“SQL diagnostic manager gives us the information we need to quickly identify and resolve SQL Server problems before they happen. Now we are spending more time on proactive and strategic planning—instead of putting out fires.”

- Chief Systems Architect  
Managed Healthcare Company

idera™



The SQL diagnostic manager 'Today Page' provides a summary of the health of the entire SQL Server environment, making it easy to see at a glance if there are servers that require immediate attention.



The SQL diagnostic manager 'History Browser' provides real-time or historical performance metrics, including resources, locks, blocks and session information. The History Browser also enables the server state to be shown as it looked at a historical point-in-time.

## SYSTEM REQUIREMENTS

### Management Console, Services and Data Repository

- Windows 2000 SP4, Windows XP SP2+, Windows Server 2003 SP2, Windows Server 2008 SP1+, Windows Vista SP1+, Windows 7, Windows 2008 R2
- .Net 2.0 SP2+ and MDAC 2.8
- Monitor capable of displaying 16bit color or greater and a resolution of 1024x768
- Repository: SQL Server 2005 SP1+, SQL Server 2008, SQL Server 2008 R2

### Supported monitored SQL Servers

- SQL Server 2000 SP4, SQL Server 2005 SP1+, SQL Server 2008 SP1, SQL Server 2008 R2

### Mobile Requirements

- Service and Web Server OS: Windows Server 2003 SP2, Windows XP SP2+, Windows Server 2008 RTM +, Windows Vista SP1+, Windows 7, Windows Server 2008 R2
- .Net Framework: .Net 4.0
- Repository: SQL Server 2005 SP1+, SQL Server 2008, SQL Server 2008 R2
- Web Server: IIS 7.0+

### Mobile and Desktop Devices

- Mobile device: Android v2.1+, iOS v3.2+, RIM v6.0+, Windows Phone 7
- Desktop Browsers: IE 9, Chrome, Firefox

SQL diagnostic manager does not install any components, DLLs, scripts, stored procedures or tables on the SQL Server instances being monitored.

## TECHNICAL FEATURES

### Powerful Performance Monitoring and Diagnostics

- **Continuous monitoring and analysis:** Provides continuous monitoring and real-time analysis of SQL Server and OS health and performance metrics across all SQL Servers enterprise-wide, including clustered configurations.
- **Adaptive and automated alerting:** Automatically identifies alert threshold recommendations based on historical performance data and automatically take corrective action.
- **History Browser:** Quickly and easily diagnose historical SQL Server performance problems by selecting a historical point-in-time to view historical SQL Server and OS performance metrics.
- **Custom monitoring:** Ability to add any SQL, Windows or DMV counter for total flexibility in monitoring and alerting.
- **Pinpoints session locking, blocking and deadlocks:** Identify locks, deadlocks and blocked sessions and see the complete blocking chain for easy identification and resolution.
- **Query and wait stat monitoring:** Identifies performance bottlenecks such as the worst performing queries along with what resource is causing the longest wait time, long-running queries, and most frequently run queries.
- **Monitor replication and mirrored environments:** Monitor and alert on performance issues affecting mirrored database or replication environments.
- **Fragmentation statistics:** Displays fragmentation statistics to help you identify indexes that may need attention.
- **Predictive alerting:** Forecasts what alerts are likely to occur based on an analysis of past performance and current activity.
- **Knowledge Base:** Provides the ability to add custom environment-specific details to reduce problem resolution time, increase availability, and increase internal awareness.

### Enterprise Management Features

- **Enterprise-class scalability:** Large numbers of servers can be monitored from a single console, providing an unprecedented level of visibility and control of the SQL Server environment.
- **Application security:** Flexible customization of server access and security permissions allow DBAs to have full access to one or more servers while other users such as Help Desk Operators are provided read-only access.
- **PowerShell Snapin:** Quickly and easily script many of the SQL diagnostic manager management tasks using the PowerShell Snapin.
- **Central Data Repository:** Stores all historical performance data in a central repository, enabling analysis of long-term trends, capacity planning and other strategic analysis.
- **Powerful reporting:** Includes predefined reports highlighting key performance trends, along with an easy to use reporting interface for users to conduct customized historical performance trending, analysis, and forecast reporting.
- **Agent-less, low impact monitoring:** Provides simple, secure data collection from a background service. No agents or components of any kind are installed on the monitored SQL Servers.

### Mobile and Collaborative Features

- **Mobile management:** View real-time and historical SQL Server performance data, view or kill sessions, start/stop jobs and run queries to resolve or diagnose issues.
- **IntelliFeed™ Technology:** Communicate and collaborate using social-networking paradigms to manage your SQL Server environment.

## KEY BENEFITS

### Increases SQL Server availability

SQL diagnostic manager continuously monitors the entire SQL Server environment and provides immediate, customized notifications when performance or availability issues are discovered. Once notified, DBAs and other administrators can quickly investigate, diagnose, and correct performance and availability problems.

### Comprehensive view of current performance

SQL diagnostic manager summarizes current server status across the enterprise and makes this information available on the desktop or mobile device. The server dashboard collects and displays extensive real-time activity, status, and performance information for sessions, queries, system resources, databases, services, and logs.

### Remote mobile SQL Server access

SQL diagnostic manager mobile provides anytime, anywhere access to monitor, diagnose or resolve issues. Real-time and historical performance data, session details, job data, and the ability to take corrective action to resolve issues means you don't have to be tied to your desk.

### Improves the productivity of both skilled and novice DBAs

SQL diagnostic manager's IntelliFeed™ technology uses a social networking paradigm to build a 'community' of DBAs and SQL Servers. IntelliFeed™ allows users to follow, monitor, and collaborate with particular SQL Servers, alerts, or co-workers ensuring effective communication and providing the ability to easily share and capture best practices.

### Offers easy installation and use

SQL diagnostic manager can be installed quickly with no agents or other database objects required on the monitored servers. A typical installation and configuration will take less than 30 minutes.



Idera is headquartered in Houston, TX with offices in London and Melbourne.

US	+1 713 523 4433 877 GO IDERA (464 3372)
EMEA	+44 (0) 1753 218410
APAC	+61 1300 307 211
MEXICO	+52 (55) 8421 6770
BRAZIL	+55 (11) 3230 7938

WEB	<a href="http://www.idera.com">www.idera.com</a>
TWITTER	<a href="http://www.twitter.com/Idera_Software">www.twitter.com/Idera_Software</a>
FACEBOOK	<a href="http://www.facebook.com/IderaSoftware">www.facebook.com/IderaSoftware</a>
LINKEDIN	<a href="http://www.linkedin.com/groups?gid=2662613">www.linkedin.com/groups?gid=2662613</a>