

# SQL compliance manager™

## Capture, audit, and alert on SQL Server activity

SQL compliance manager is a comprehensive SQL Server auditing solution that uses policy-based algorithms to track changes to your SQL Server objects and data. SQL compliance manager gives you detailed visibility to determine who did “what”, “when”, “where”, and “how” – whether the event is initiated by privileged users or hackers. SQL compliance manager helps you to ensure compliance with regulatory and data security requirements such as Sarbanes-Oxley, GLBA, HIPAA(HITECH), PCI, Basel I and II. SQL compliance manager goes beyond traditional auditing approaches by providing real-time monitoring and auditing of all data access, selects, updates, schema modifications, and permission changes.

### WHY SQL COMPLIANCE MANAGER?

As data security and regulatory compliance requirements have become increasingly stringent, DBAs are tasked with the monumental job of providing an accurate audit trail of activities such as database access, update actions, schema changes, and security permissions changes. Unfortunately, auditing and reporting this information can often require weeks or months of custom development or in some cases the employment of a full-time DBA staff to provide scheduled or on-demand reports to auditors. SQL compliance manager eliminates this overhead by providing real-time monitoring and auditing of SELECT statements (includes column-level granularity), DML, schema changes, security permissions, and logins; providing quick, easy, accurate, and trusted answers whether you have tens, hundreds, or thousands of SQL Servers in your organization. With SQL compliance manager you have the right SQL Server auditing solution to ensure that all server accesses and exceptions are tracked to comply with internal and external audits.

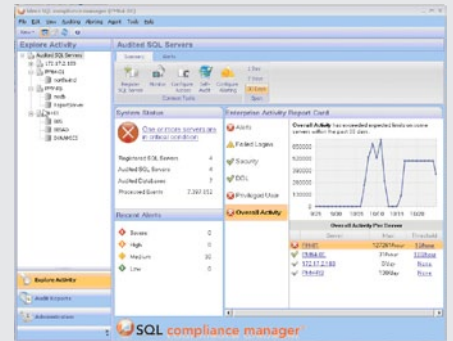
### PRODUCT HIGHLIGHTS

- Real-time auditing of all SQL Server data and object changes
- Flexible collection filters gather the data you need
- Audits changes to SQL Server data on the column level
- Customizable alerts to notify you of suspect activity
- Provides comprehensive reporting to satisfy audit requirements

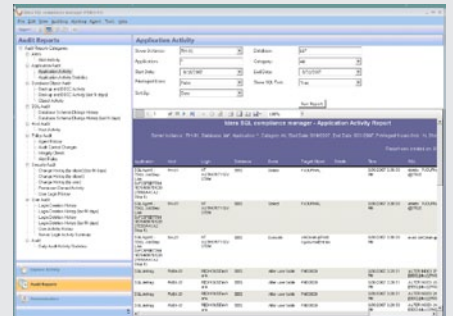
“We needed a product that would enable us to monitor any changes made to our databases and satisfy our auditor’s compliance requirements. SQL compliance manager gives us all that and much more. It allows us to monitor any changes and attempted changes to databases by users, date and system. This has increased our security and has saved us countless hours when troubleshooting problems. I highly recommend SQL compliance manager.”

- Information Systems Operations Manager  
Major Hotel & Casino

idera™

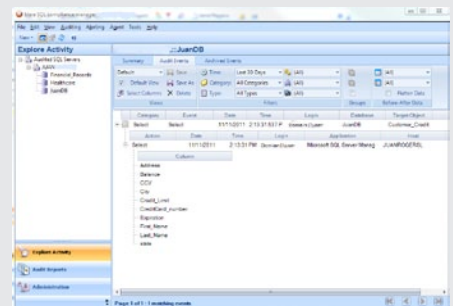


SQL compliance manager allows you to centrally audit, generate compliance reports, monitor activity levels and receive alerts from all instances of SQL Server enterprise-wide. SQL compliance manager is low overhead, and is easy to deploy. It is easier than ever to quickly identify, diagnose, and resolve performance problems.



SQL compliance manager offers over 25+ pre-defined compliance reports developed in partnership with auditing experts.

The Microsoft Reporting Services Reports can be viewed in the Console or can be deployed to SQL Reporting Services to be customized.



### Sensitive column auditing

Audit all activity to sensitive column data. Capture the exact date, time, and columns that were accessed by the malicious insider.

## TECHNICAL FEATURES

### Powerful and Flexible SQL Server Auditing

- **Low-overhead data collection:** A lightweight agent captures data from the SQL Server trace stream in real-time. The data collected can be streamed to the repository in real-time or in scheduled batches.
- **Tamper Proof audit data repository:** Guarantees the integrity of audit data by providing an immutable repository – any attempts at changing or tampering with the audit data can be detected. In addition, powerful self-auditing features capture and alert on all changes to auditing policies and data collection parameters.
- **Auditor's mode:** Users can be granted auditor privileges only. Users in the auditor role have read-only permission. This supports report and query execution as well as self-audit, integrity reporting, and alerting of changes to SQL compliance manager configuration and data collection parameters.
- **Fine-grained filtering:** Powerful filtering capabilities enable you to collect only what is important for audit and compliance; reducing data collection, transmission and storage overhead.
- **Customized alerting:** Provides customized alerting for over 200 specific SQL Server Event types, allowing you to define rules to receive immediate notification when critical SQL server events occur. These events are stored in the audit repository, can be emailed directly to a user and/or written to an event log that feeds an in-house operations monitor system (e.g. SCOM).
- **User-defined event auditing:** Supports comprehensive auditing of user-defined events. For example, events can be captured for data changes resulting from INSERT, UPDATE, or DELETE activity on tables, or additional application context can be included within your audit trail.
- **Data auditing:** SQL compliance manager enables auditing of data changes on any table so you can compare before and after data values resulting from inserts, updates and deletions.

### Enterprise Management Features

- **Central Management Console:** Central console enables rapid configuration and deployment of SQL compliance manager agents as well as real-time monitoring of agent activity and the audit data stream. This makes it easy to manage and track audit activity over a large number of servers.
- **Central Data Repository:** A central repository houses all audit data. The published, user-friendly repository schema enables easy development of queries and custom reports. In addition, multiple repositories may be used where required for security partitioning purposes.
- **DynamicDeployment™ technology:** Automatically deploys and configures the SQL compliance manager agents, enabling rapid deployment and eliminating the need for time consuming software installs on your SQL servers.
- **Efficient data archive:** Built-in archiving mechanisms enable archiving to be scheduled on any frequency and archives can easily be restored to the current audit data repository or a separate repository. Additionally, you can easily leverage SQLsafe, Idera's high-performance backup solution, to compress and encrypt audit data archives.

## SYSTEM REQUIREMENTS

### MANAGEMENT CONSOLE

- Windows 2000 SP3+, Windows XP SP2+, Windows Server 2003, SP1+, Windows Server 2008, Windows Vista, Windows 7 SP1+
- Microsoft .NET 2.0

### COLLECTION SERVER & DATA REPOSITORY

- Windows 2000 SP3+, Windows XP SP2+, Windows Server 2003 SP1+, Windows Server 2008, Windows Vista, Windows 7 SP1+
- Microsoft .NET 2.0
- Repository: SQL Server 2000 (all versions/service packs), SQL Server 2005 (all versions/service packs), SQL Server 2008 SP1+, SQL Server 2008 R2 SP1+

### AGENT

- Windows 2000 SP4, Windows XP SP2, Windows Server 2003 SP1+, Windows Server 2008, Windows Vista, Windows 7 SP1+; Microsoft .NET 2.0

### SUPPORTED SQL SERVER ENVIRONMENTS

- SQL Server 2000, SQL Server 2005, SQL Server 2008, SQL Server 2008 R2

## KEY BENEFITS

### Continuous, Flexible Auditing:

SQL compliance manager goes beyond traditional auditing approaches by providing real-time monitoring and auditing of all data access, updates, data structure modifications, and changes to security permissions. The type and detail of audit data collected is highly configurable and may be defined at the server, database, and object level. No changes to applications or production databases are required.

### Immediate notification of suspect activity:

SQL compliance manager can be configured to alert DBAs of suspect server activity, either via e-mail or the event log. The alerting engine includes powerful features such as flexible alert definition, alert templates, custom messaging, and alert reporting; and alerts can be applied across the board, or to specific servers, databases or tables, for more fine-grained control.

### Tamper-proof audit data repository:

SQL compliance manager has been engineered to provide a trusted, immutable source of audit data. The audited data is captured and stored in a central repository for reporting, querying, and forensic analysis. Its powerful self-auditing features ensure that you are alerted to any changes to data collection settings or attempts to tamper with the audit data repository.

### Minimal performance impact:

SQL compliance manager employs a very efficient, low-overhead data collection mechanism to minimize impact on audited servers. A lightweight agent monitors the SQL Server trace data stream in real time, collects the audit data and sends it back to the repository. SQL compliance manager does not use high-overhead approaches that can impact server performance such as triggers, profiling, 'heavy' tracing options, or log scraping.

### Powerful reporting and analytics:

SQL compliance manager provides 'out of the box' reports to address a broad range of auditing and security reporting needs. These reports were developed in conjunction with industry experts in security, compliance, and auditing policies, such as Ernst and Young and Information Shield Inc. All reports may be easily customized, plus the user-friendly schema of the audit data repository enables rapid development of ad-hoc queries and reports for detailed forensic analysis.

### Data auditing:

SQL compliance manager enables auditing of data changes on any table so you can compare before and after data values resulting from inserts, updates, and deletions. Data auditing is facilitated by using a unique, low overhead, non-intrusive method to ensure minimal impact on SQL Server performance.

### Sensitive Column Auditing:

SQL compliance manager allows you to audit any combination of columns and track who has issued "SELECT" statements against any table whether they are end-users or privileged users.



Idera is headquartered in Houston, TX with offices in London and Melbourne.

**US** +1 713 523 4433  
877 GO IDERA (464 3372)

**EMEA** +44 (0) 1753 218410

**APAC** +61 1300 307 211

**MEXICO** +52 (55) 8421 6770

**BRAZIL** +55 (11) 3230 7938

**WEB** [www.idera.com](http://www.idera.com)

**TWITTER** [www.twitter.com/Idera\\_Software](http://www.twitter.com/Idera_Software)

**FACEBOOK** [www.facebook.com/IderaSoftware](http://www.facebook.com/IderaSoftware)

**LINKEDIN** [www.linkedin.com/groups?gid=2662613](http://www.linkedin.com/groups?gid=2662613)