

SP Series

*High-Speed Laser Cutters
for Large Format Materials*



2b 3c

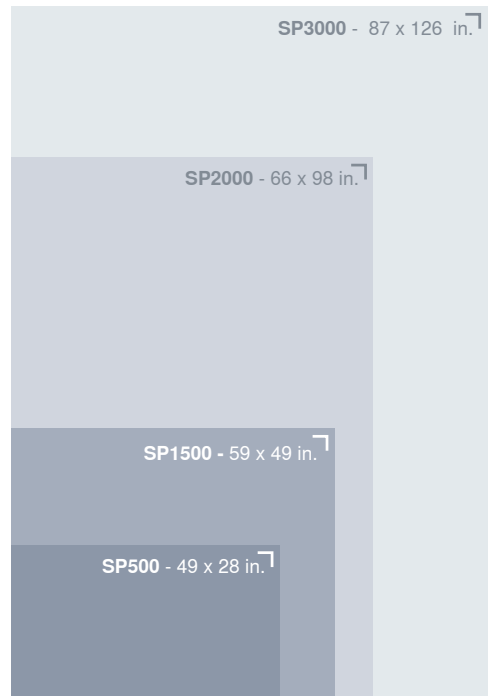
SP Series

Efficient Large Format Laser Cutters

Designed to maximize production efficiency, the SP Series large format CO₂ laser cutting systems are ideal for businesses working with demanding large-format cutting applications in acrylic, paper, cardboard, plastics, wood, textiles and many more.

Available in a range of bed sizes with several power options, these laser cutters provide high-quality results at maximum speed. The unique, multi-functional table concept allows the user to quickly and easily select and change the table to meet the needs of each application.

The working areas of SP laser cutters provide enough space for all standard sheet sizes in use today. In addition, we offer a full range of high-quality, competitively-priced laserable materials – which allows us to offer a unique single-source solution for equipment, materials, and direct-manufacturer support for both.



SP500

- A 49 x 28 in. working area
- A up to 200 watts laser power



SP1500

- A 59 x 49 in. working area
- A up to 400 watts laser power

SP2000 and SP3000



Outstanding Working Area

With generous working areas as large as 87 x 126 inches, SP Series laser cutters are ideal for standard sized large format materials. The SP2000 and SP3000 also feature an ergonomic design with access to all four sides, allowing unrestricted unloading and loading even while the machine is cutting.



Laser Safety Class 2

SP Series lasers are classified as laser safety class 2, so no additional safety measures are necessary. The laser beam is covered over its complete path. An active laser deflector shield on the laser head completes the safety concept.



Digital Table Exhaust

The working area is divided into sections (two on the SP2000 and four on the SP3000) so that extraction can be activated independently on each section. There is no need for covering the working area manually.

Multi-functional Table Concept

The right working table for every application



Slat Cutting Table

The cutting table with aluminum slats is used primarily for cutting materials up to .98 inches (25 mm) thick and for parts wider than 3.9 inches (100 mm). You can exchange the aluminum slats with acrylic slats to cut acrylics with no reflections, and also reduce the number of supporting points by removing slats individually, depending on the job.



Aluminum Cutting Grid Table

This robust, universal cutting table is characterized by extremely stable combs and a long lifetime. It is particularly suitable for cutting tasks with parts smaller than 3.9 inches (100 mm), as these remain in a flat position after the cut. Compared to the cutting table the aluminum cutting grid table has more supporting points.



Acrylic Cutting Grid Table

The universal cutting table is ideal for the reflection-free cutting of thin acrylics with a thickness up to 0.31 inches (8 mm). Like with the aluminum cutting grid table parts smaller than 3.9 inches (100 mm) remain in a flat position after the cut.



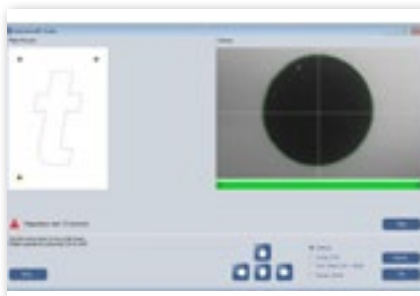
SP2000

- A 66 x 98 in. working area
- A up to 400 watts laser power



SP3000

- A 87 x 126 in. working area
- A up to 400 watts laser power



JobControl® Laser Software

Trotec's JobControl® software provides intuitive workflow support with variety of useful and intelligent features that make your work easier, including bi-directional communication, Job Time Calculator or JobControl® Vision, which enables you to achieve accurate results when cutting printed materials.



InPack Technology™

Keeping the axis in optimal working condition is a must for getting good cutting results. Patented InPack Technology™ helps by enclosing the fragile, system-critical components, protecting them from dust and debris, and lengthening product life. All optics are also air-flushed with clean compressed air, keeping them free from dust that is produced during cutting.



Travelling Exhaust

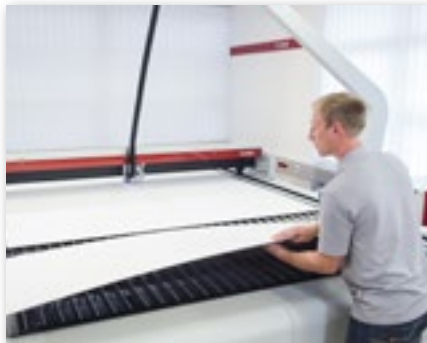
An exhaust is mounted directly on the working head and removes dust and smoke from the material surface during processing. This dramatically improves cutting and engraving quality.

Technical Data

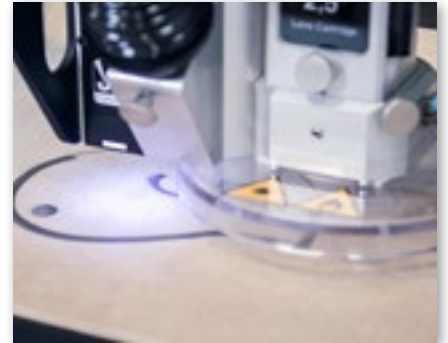
	SP500	SP1500	SP2000	SP3000
Dimension (w x d x h)	75.6 x 48.8 x 44.9 in.	112.2 x 86.6 x 51.2 in.	99.2 x 126.5 x 48.4 in.	121.1 x 154.1 x 48.4 in.
Working area	49 x 28 in.	59 x 49 in.	66 x 98 in.	87 x 126 in.
Loading Area	55.1 x ∞ in.	59 x 49 in.	76.8 x ∞ in.	98.4 x ∞ in.
Max. workpiece height	4.4 in. or 11.8 in. without processing table	7.3 in.	1.97 in.	1.97 in.
Max. processing speed/acceleration	6.5 ft/sec. 2 g	5.4 ft/sec. 1 g	6.5 ft/sec. 1 g	6.5 ft/sec. 1 g
Laser power	Sealed off CO ₂ laser with 40 – 200 watts	Sealed off CO ₂ laser with 40 – 200 watts	Sealed off CO ₂ laser with 60 – 400 watts	Sealed off CO ₂ laser with 60 – 400 watts
Laser Class	Laser safety class 2 (laser class 4 with pass-through option)	Laser safety class 2	Laser safety class 2	Laser safety class 2
Access on four sides			•	•
Digital table exhaust			•	•
JobControl® Vision	•	•	•	•
Software-controlled z-axis	•		•	•
Sonar Technology™			•	•
Pass-through	•		•	•
Multi-functional table concept	•	•	•	•



Laser cut large format materials



Load and unload from all four sides even during processing



Powerful laser cutting and engraving with one machine

44747 Helm Ct | Plymouth, MI 48170
 Toll Free: 866-226-8505 | Email: sales@troteclaser.com
 www.troteclaser.com | www.trotec-materials.com