

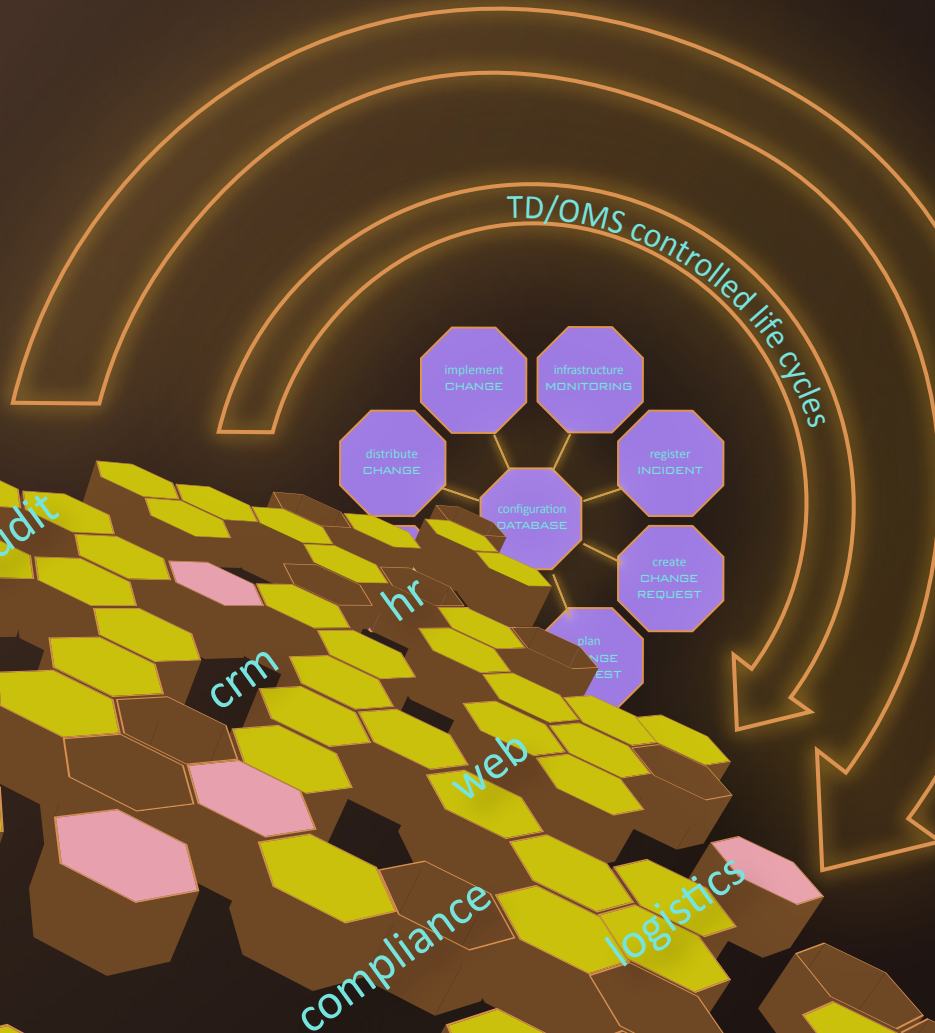
REMAIN TD/OMS



Software
CHANGE
Management

Organizations are changing and technological developments arise rapidly. Continuous renewal demands high requirements from the IT organization and the ability to adapt to changes quickly and in a controlled way. Remain TD/OMS delivers complete control over the software change process while providing real-time insight in the configuration.

 **REMAIN**



SOFTWARE CHANGE MANAGEMENT

Software Change Management (SCM) is a combination of processes and technology to control changes made to software. In modern enterprises, software automates a wide variety of business processes. Changes made to software are, in effect, changes made to the business processes themselves. Software change thus requires careful management just as business process change.

BUSINESS CHALLENGES

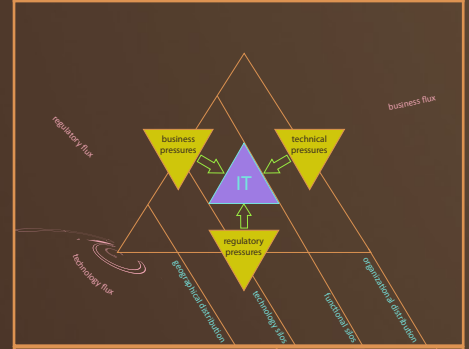
Due to the rapidly evolving markets, enterprises are struggling to meet the demands of the dynamic world they are in. The increased business pace with a more customer centric model, new regulations on compliance and more complex environments cause continuous pressures on the IT organization to deliver. In order to face these challenges, IT organizations must be able to quickly adapt to new requirements in a controlled way. Having a clear understanding of the software infrastructure is essential, together with flexible and well defined change procedures.

BUSINESS BENEFITS OF SCM

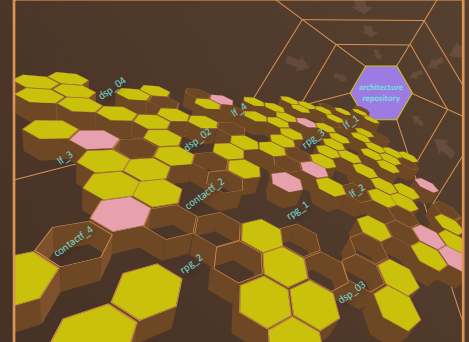
- ✔ Significant development cost reductions
- ✔ Compliance to audit requirements
- ✔ Adoption of specific business aligned process
- ✔ Improved software quality & impact analysis
- ✔ Quicker time to market
- ✔ Improved system continuity
- ✔ Alignment with industry best practices



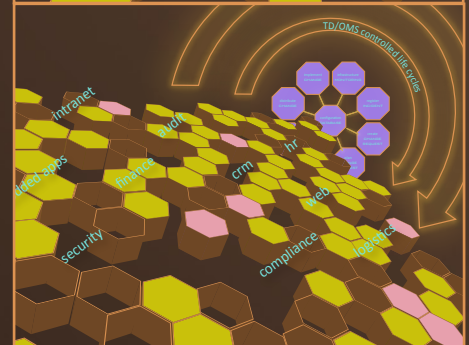
Software Change Management



IT pressures & challenges



Software configuration overview



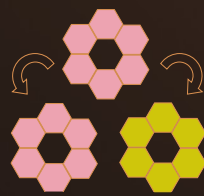
Software controlled applications



✔ independent cycles



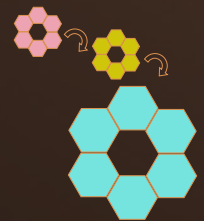
✔ multiple technologies



✔ multiple languages



✔ real-time configuration database overview



✔ multiple versions



FEATURES

- System i, Windows, UNIX support
- Integrated client management for Windows & UNIX (System i IFS)
- Rules-based process definition
- Incident, request & task management
- Source code control
- Source compare & merge
- Version control
- Real-time configuration database
- Transfer and change history
- Transfer per release, request or fix
- Unattended (remote) implementations
- Automatic or manual rollback
- Integrated Helpdesk
- Integration with Eclipse / WDSCI
- Integration with Open Source tooling: Subversion, Mylyn, BIRT, Maven, Maestro
- 4GL support: AS/SET, CA 2E, CA Plex, IDDO, LANSA, Magic
- System i 'Green screen' and GUI
- Emergency environment
- Ratification control per development phase
- Impact analysis

REMAIN TD/OMS

➤ Remain TD/OMS is a flexible and cost effective software change management solution for System i, Windows and UNIX. Remain TD/OMS delivers complete control over the software life cycle process while providing real time insight in the configuration. Whether in development, test, acceptance or deployment phase, TD/OMS helps the IT organization to streamline the change process for any type of application, no matter how complex the environment.

BENEFITS

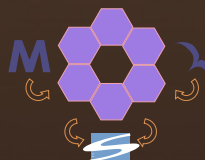
- From incident registration to implementation of software into production, TD/OMS is an integrated solution supporting the complete process. It incorporates an elaborate Helpdesk Management System and can be integrated into existing (ITIL) processes. The impact of changes can be analyzed through the configuration database, greatly minimizing risks.
- TD/OMS supports regulatory compliancy such as SOX or ISO27002 and delivers insight to auditors in the change process at any moment in time.
- All TD/OMS management structures can be fully customized via the easy to use GUI to suite the operational needs and control the maintenance process. Managers have a complete view of outstanding requests, tasks and programmer workload.



➤ Eclipse & Websphere support



➤ 4GL support



➤ Subversion, Mylyn & BIRT interfacing



➤ support for SOX & ISO27002 compliancy



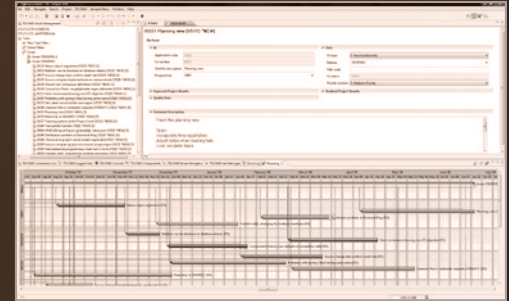
➤ support for ITIL

SUPPORTED CYCLES

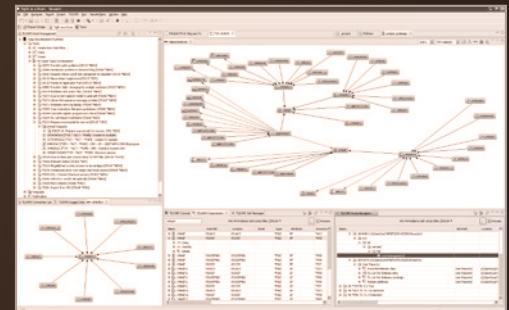
Due to its flexible architecture, TD/OMS can support any number of software change cycles in a multitude of technologies. These cycles can be completely independent from each other, with each component, whether software, documentation or other media, going through its own cycle supported by its own development team at any location. Distributed deployment of these packages can be done fully automatic. TD/OMS comes with out-of-the-box support for multi-lingual application packages. Also cross-versioning is supported to provide backwards/forward code fixing in multiple versions.

INTERFACING

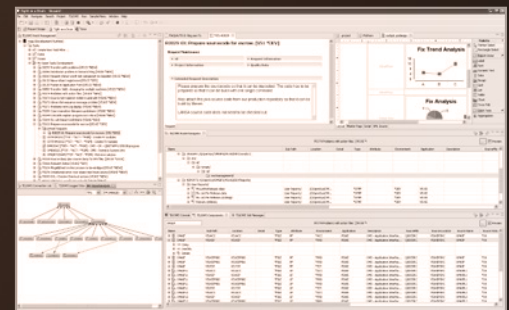
TD/OMS has been built from the ground up to integrate with existing processes and technologies. TD/OMS is highly integrated with Eclipse and IBM Websphere (WDSCi) to provide a robust platform for software development. Furthermore TD/OMS connects with Open Source tools for: task-focused management (Mylyn), a sophisticated gateway for version control (Subversion) and business reporting (BIRT). It also includes modules for interfacing with fourth generation languages such as AS/SET, CA 2E, CA Plex, IDDOS, LANSA and Magic.



TD/OMS Planning GUI



TD/OMS Impact Analysis GUI



TD/OMS Reporting GUI



Software
CHANGE
 Management





ADDRESS

➤ Remain B.V.
Dukatenburg 82b
3437 AE Nieuwegein
Tel: +31 (0)30-6005010
Fax: +31 (0)30-6005019
Email: info@remainsoftware.com
Web: www.remainsoftware.com

ABOUT REMAIN

➤ Remain is an independent software company for more than 15 years and delivers innovative solutions for software life cycle support. Remain, market leader in the Benelux and IBM Advanced Business Partner, is an agile, customer focused organization, supported by an extensive partner network. Remain's in-house developed software change management solution helps organizations to simplify the change process and streamline their software development for System i, Windows and UNIX systems.

SERVICES

➤ In addition to the off-the-shelf software solution, Remain provides a complete range of services related to software life cycle support. These services include advisory, audits & scans, process implementation, product implementations & training, consultancy, remote management and (SLA-based) service desk.

