

Backup and Recovery Solution Set for IBM i

A Strategy for the Unexpected

Robot/SAVE® • Robot/NETWORK® • Robot/ALERT®

Overview

The ability to back up your critical data—and recover it should the need arise—is essential to the survival of your business. In fact, developing backup and recovery strategies for Power Systems™ running IBM i (iSeries®, System i®, AS/400®) is one of the most important tasks your operations staff will undertake.

Despite the importance of disaster recovery, backup strategies often consist of patched-together procedures that leave a company vulnerable. You need a reliable solution that can handle all of your system backup, recovery, and media management needs.

The **Backup and Recovery Solution Set** from Help/Systems helps you simplify your backup process and recover from unforeseen events faster by automating data backup and media management, performance monitoring, and alerting. Our automation solutions give you more control over when and how backups happen, while saving you time and helping you stay organized.

Avoid Costly Data Backup Headaches Like:

- Not knowing how to encrypt sensitive data.
- Having your operator come in on weekends to run restricted-state backups.
- Operators responding to tape-mount prompts with a cancel.
- Manually tracking tapes in a logbook.
- Executing your backup solution manually.
- Tracking backup activity to comply with SOX.
- Missing backup errors buried in a job log.

Your Automated IBM i Disaster Recovery Solution

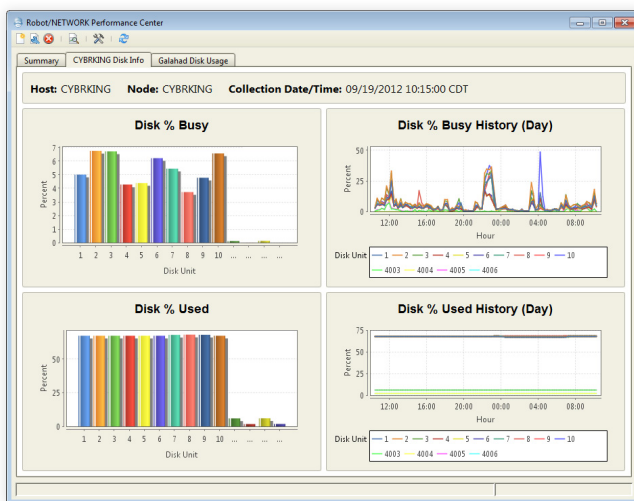
Each of the backup and recovery products was developed to work together seamlessly. Whether you implement them individually or as a set, Robot automated operations solutions address specific pain points in your IBM i environment using time-tested technology that businesses worldwide rely on every day.

Robot/SAVE automates the routine, complex tasks of Power Systems backup and recovery, saving you both time and money while making the process safer and more reliable. It allows you to easily back up libraries, objects, documents, all or part of the Integrated File System (IFS), and active Domino databases. Robot/SAVE can encrypt data as it is saved to tape, making your backup tapes as secure as your system.

The Robot/SAVE save media management system eliminates error-prone tape handling practices. With it you can define instructions for managing tape movement, track tapes as they move locations with auto-move processing, and generate reports to help plan your media operations and provide a detailed audit trail of your media volumes. Robot/SAVE routes volume-related information in its database to all systems in the data center; and lets you perform volume management and reporting tasks from any system in the data center.

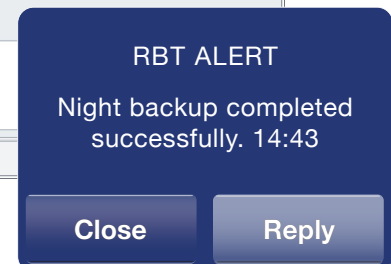
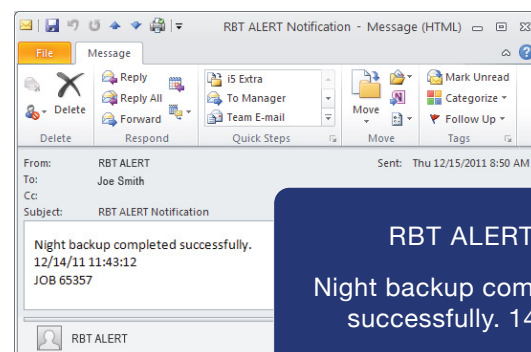
Performance Monitoring, Data Backup, and Alerting for IBM i.

Robot/NETWORK is performance monitoring and message consolidation software for Power Systems running IBM i. It offers system-wide control of your IBM i partitions as well as performance monitoring, exception-based management, and integration for multiple server types (or platforms) and events. It features multiple threshold levels for each partition and the ability to monitor multiple levels for more than 25 performance statistics. It also gives server health updates at a glance with graphs and gauges for current and historical performance of CPU usage, disk percentage busy, interactive response time, and more.



The Robot/NETWORK Performance Center gives you custom dashboards, graphs, and charts on current and historical metrics.

Robot/ALERT prevents errors and outages by sending messages about Robot product solutions to almost any device. Robot/ALERT commands can be embedded in your applications and you can send its messages to distribution lists. To keep small problems from becoming major headaches, Robot/ALERT can escalate problems automatically—and the power to respond to alerts by cell phone, laptop, and tablet means you'll never be out of reach.



Robot/ALERT keeps you up to date on program and Power Systems events on nearly any device.

About Help/Systems, LLC

Founded in 1982, Help/Systems is the world's leader in software solutions for IBM® Power Systems™ running IBM i. Its Robot automated operations solutions include tools for enterprise scheduling, network monitoring, message management, and reporting. It was the first American software company certified under the ISO® 9001 standard and is certified compliant with the updated 9001:2008 standard.

Help/Systems, LLC.

www.helpsystems.com | +1 (952) 933-0609 | info@helpsystems.com

For More Information

Visit www.helpsystems.com/tryrobot or call 1-800-328-1000 for your FREE 30-day trial.

