

JOIN OUR PEDIATRIC ACUTE CARE

TEAM IN LOUISVILLE, KENTUCKY



“ **WE TAKE PRIDE** IN OUR SUPPORTIVE TEAM ENVIRONMENT AND WORK CULTURE. OUR ROBUST ONBOARDING PROCESS ENSURES EACH NEW TEAM MEMBER IS SUPPORTED THROUGHOUT THEIR JOURNEY AND RECEIVES SUFFICIENT TRAINING SO WE CAN ALL WORK FLUIDLY TOGETHER. ”

- **MISTY D. ELLIS, DNP, APRN, CPNP-AC/PC**
Lead Cardiac Nurse Practitioner



NORTON
Children's
Heart Institute

Affiliated with **UL** SCHOOL OF MEDICINE

CAREER OPPORTUNITY FOR ADVANCED PRACTICE REGISTERED NURSE

NORTON CHILDREN'S HEART INSTITUTE is seeking a board-certified pediatric acute care advanced practice registered nurse for the Jennifer Lawrence Cardiac Intensive Care Unit at Norton Children's Hospital. Norton Children's Heart Institute, affiliated with the UofL School of Medicine, is a growing program with outcomes that rival similar programs in the region. The ideal candidate will join a group of five other advanced practice registered nurses and eight cardiac intensivists who care for patients in the 17-bed cardiac ICU. Our goal is to grow to a team of seven advanced practice providers.

Norton Children's Heart Institute is a full-service program with a specialized team that includes three pediatric cardiovascular surgeons, heart failure and transplant cardiologists, pediatric cardiologists, adult congenital heart disease specialists, pediatric electrophysiologists, interventional cardiologists, cardiovascular anesthesiologists and pediatric intensive care physicians.

To discuss this opportunity, contact Tracy Shaughnessy, senior recruiter, physicians, Norton Children's Medical Group, at **(502) 609-3672** or **tracy.shaughnessy@nortonhealthcare.org**. See all of our career opportunities at **BeANortonDoctor.com**.

ABOUT THE POSITION

- Provides preoperative and postoperative care for patients with congenital heart disease who are having cardiac surgery
- Provides management for patients with heart failure, cardiac arrhythmias, interventional cardiac catheterization, ventricular assist devices and cardiac transplantation
- Onboarding process includes a combined high-level didactic and simulation curriculum; length of orientation is based on provider experience
- Unit coverage model consists of 24/7 service by the advanced practice provider team and cardiac intensivist

REQUIREMENTS

- Master's or doctoral degree in nursing
- Board certification in pediatric acute care
- Kentucky nursing license or license eligible

WHY NORTON HEALTHCARE FOR YOUR CAREER?

- Market share leader in the region
- Strong support network of advanced practice providers, nurse navigators, educators and social workers
- Strong continued investment in technology and physical spaces for improved patient care environments
- Ranked on Becker's Healthcare 150 Top Places to Work in Healthcare list in 2019
- Recognized as one of America's Best Employers for Women by Forbes (2018 and 2019)

PROVIDER DEVELOPMENT OPPORTUNITIES

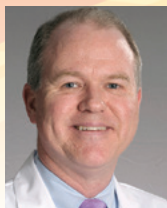
- Norton Provider Leadership Academy
- Leadership councils
- Clinical research support
- Chronic disease task forces
- Operational and electronic health record efficiency improvement
- Provider well-being program
- Community education
- Clinical quality initiatives

MEET THE KEY LEADERSHIP



Bahaaldin Alsoufi, M.D.

Chief
Pediatric Cardiac Surgery



Brian J. Holland, M.D.

Chief
Pediatric Cardiology



Vicki L. Montgomery, M.D.

Chief
Pediatric Critical Care



Deanna R. Todd Tzanetos, M.D., MSCI

Medical Director
Jennifer Lawrence Cardiac Intensive Care Unit



Misty D. Ellis, DNP, APRN, CPNP-AC/PC

Lead Cardiac Nurse Practitioner

JENNIFER LAWRENCE CARDIAC INTENSIVE CARE UNIT

Opened February 2020

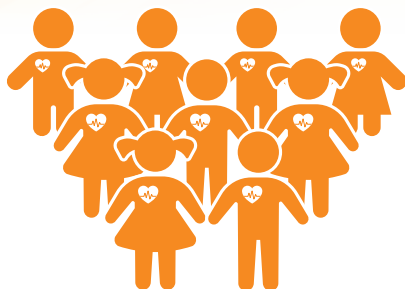
- 14 private rooms with private bath and shower
- Booms that allow 360-degree access around the bed for gases and equipment
- State-of-the-art monitoring with dual monitors to allow all clinicians in the room to see patient's hemodynamics
- Special lighting in the ceiling for use with procedures done in the room
- Three rooms specially designed for neonates, featuring a camera system so parents can view their babies from home
- Open-concept, innovative unit designed to reduce sound and allow for safe, efficient care; includes centralized work stations for interdisciplinary use with clear sightlines
- Designated technician to monitor all telemetry patients throughout Norton Children's Hospital 24/7
- Pediatric extracorporeal membrane oxygenation (ECMO) team able to care for neonatal, pediatric and adult ECMO patients
- Patient and family support resources, including child life with pet therapy, pastoral care, social work, palliative care and expressive therapy



ABOUT NORTON CHILDREN'S HEART INSTITUTE

Provides care
for approximately

17,000
children a year, including:



350
heart surgeries

9
heart transplants
in 2019

7,300
echocardiograms

Only comprehensive
pediatric heart surgery, heart failure
and transplant program
in Kentucky



Patients from
17 STATES

ABOUT NORTON CHILDREN'S MEDICAL GROUP

Employs nearly

500
pediatric specialty
and primary care
providers



PROVIDERS
have access to
University of
Louisville's *clinical research*
and *teaching* opportunities



Over
170
locations in
Kentucky and
Southern Indiana



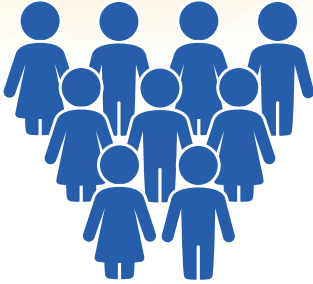
Physician-led
medical group

Affiliated
with the

U OF L SCHOOL OF
MEDICINE

ABOUT NORTON CHILDREN'S

Serves more than
185,000
patients each year



with
375,000+
patient visits
ANNUALLY

Over
500

clinical research studies

- **Two hospitals, a medical center, regional outpatient centers, and primary and specialty care physician practices**

Norton Children's Hospital

- **300 beds**; region's only full-service, free-standing pediatric hospital
- **Level I Pediatric Trauma Center**
- **One of the nation's largest Level IV NICUs**



Norton Children's
Hospital



Norton Women's &
Children's Hospital



Norton Children's
Medical Center



Novak Center for
Children's Health



NORTON
Children's
Heart Institute

Affiliated with **U** OF **SCHOOL OF MEDICINE**