

PowerTech  
**Compliance Assessment**

It's time to see how secure your system really is.

Compliance with government and industry regulations, such as Sarbanes-Oxley (SOX) and Payment Card Industry (PCI) standards, is now a fact of business life. And, with regulation comes accountability, audits, and auditors. As part of any comprehensive audit, auditors need a security policy and proof of compliance for critical Information Technology (IT) systems. Organizations around the world are tightening the controls for configuration and use of their critical business servers. The need is great for an easy, intuitive tool that helps users determine the real state of their "secured" IBM Power Systems servers (System i, AS/400) and provides a realistic idea of how to correct problems.

**At-A-Glance**

- Quick**—the assessment takes 5-10 minutes to run
- Simple**—the assessment runs from a PC
- Clear**—the assessment results are presented in a browser-based, interactive application
- Thorough**—a PowerTech Security Advisor helps you clearly understand your current state of security
- Clean**—the assessment leaves no trace on the System i

**Free Compliance Assessment**

The PowerTech Compliance Assessment is a free, non-intrusive tool that audits common security metrics, such as user profile configuration and public authorities, on Power Systems running IBM i. The assessment runs from a network-attached PC and is removed automatically from the server after the audit data is collected. The assessment does not modify any system settings or populate libraries, and the results are compiled immediately and presented for review in an easy-to-understand, browser-based, interactive, reporting application.

In just a few minutes, a PowerTech Compliance Assessment can show clearly how vulnerable your sensitive data may be. For example, a recent study showed that 65% of systems had no visibility of users accessing or changing data on the System i

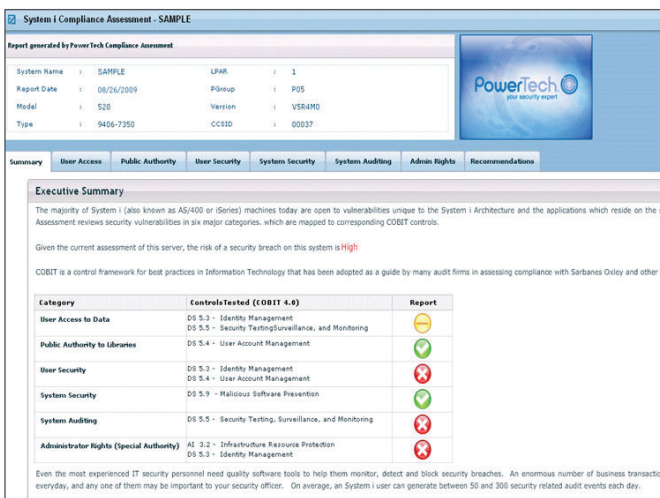


Figure 1: The Compliance Assessment's Executive Summary

A PowerTech Security Advisor helps you with the installation, execution, and interpretation of the Compliance Assessment results. It usually takes less than 10 minutes to gather information about your system.

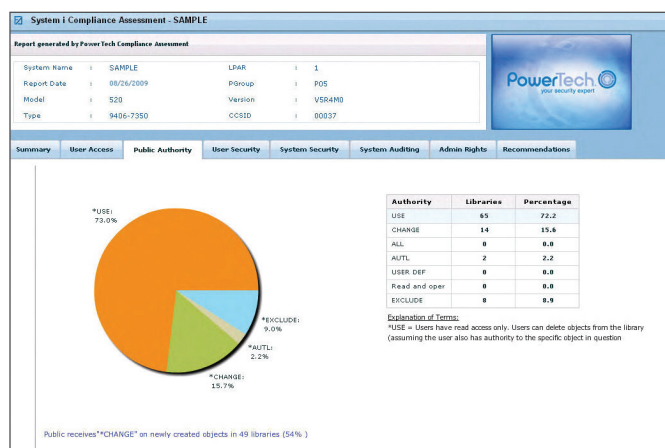


Figure 2: Public Authority Rights

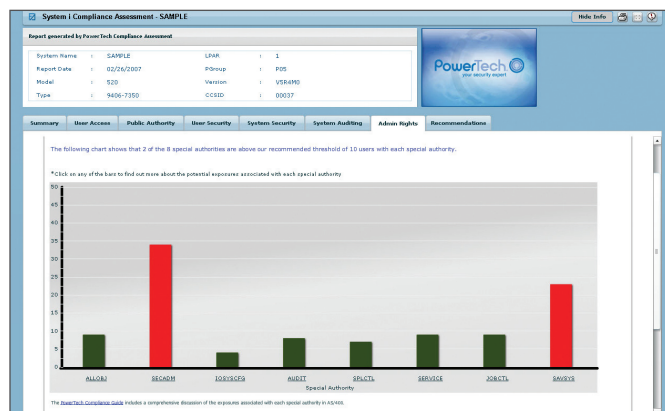


Figure 3: Administrator Rights

### About the PowerTech Group, Inc.

Because System i and AS/400 servers are used to host particularly sensitive corporate data, every organization needs to practice proactive compliance security. As an IBM Advanced Business Partner with over 1000 customers worldwide, PowerTech understands corporate vulnerability and the risks associated with data privacy and access control.

using PC applications like Microsoft Excel. And, 50% of systems have more than 15 profiles with default passwords (where password = username), offering unsecured access.

### The Assessment Process

A PowerTech Security Advisor helps you with the installation, execution, and interpretation of the Compliance Assessment results. It usually takes less than 10 minutes to gather information about your system. After reviewing the assessment findings with the advisor, you will understand both the current state of security on your System i server and recommendations for corrective action. And, you can print the findings for distribution or for your records.

### After the Assessment

After it's done, the Compliance Assessment leaves no permanent footprint on the System i. It's easy, and you can run any number of assessments during a 7-day period and view them as long as the assessment software is installed on the PC. When you no longer need the software, you can remove it from your PC using the Windows Control Panel Add/Remove Programs interface.

*To license the Compliance Assessment tool beyond the initial 7-day period, contact your PowerTech Regional Sales Manager.*



To learn more, visit [www.powertech.com](http://www.powertech.com) to find white papers, case studies, and product demonstrations. Or, call 800-915-7700 (USA) or 253-872-7788 to speak to a Security Advisor.