

## STANDALONE OR PARASITE



The product is



a standalone new product



an add-on "parasite", applied to some product that already exists

SUGGESTED DECK CARDS



## WEARABLE



Can the product be worn?



Yes, it can



No, it can't

SUGGESTED DECK CARDS



## FIXED LOCATION



The product is



fixed in one place, or usually remains in the same place without being removed



usually moved around and transported

SUGGESTED DECK CARDS



## PRODUCT ECOSYSTEM



The product



is connected to other objects (excluding smartphones)



is connected with external services and apps

SUGGESTED DECK CARDS



## CONNECTIVITY



The product is connected



directly to the internet (ethernet, wifi)



yes, but mediated by another device (Bluetooth to a smartphone/ hub/ gateway)

SUGGESTED DECK CARDS



## OFFLINE FUNCTIONS



Without internet, the product's functions



won't work! It is internet-dependant



may be partially accessed

SUGGESTED DECK CARDS



## INTERACTION INTERFACES



Interaction mainly happens



through interfaces that are embedded in the product



through interfaces that are external to the product, such as apps, dashboards

SUGGESTED DECK CARDS



## DATA



The product



collects data



responds, notifies



visualizes data



offers control

SUGGESTED DECK CARDS



## WEARABLE

2



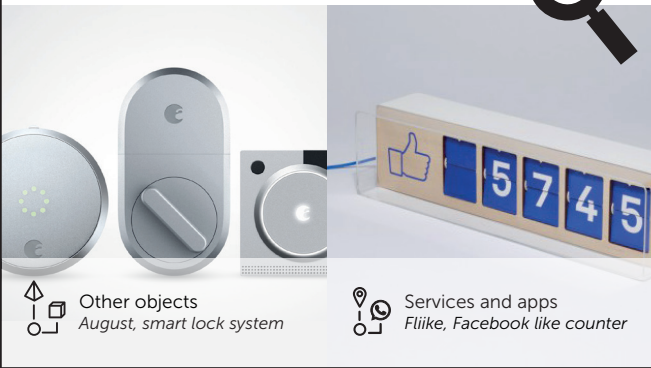
## STANDALONE OR PARASITE

1



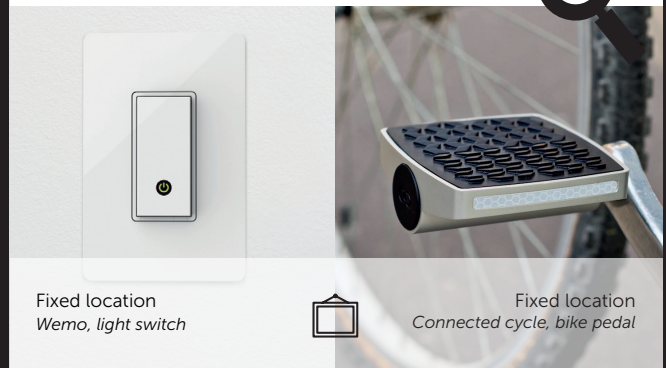
## PRODUCT ECOSYSTEM

4



## FIXED LOCATION

3



## OFFLINE FUNCTIONS

6



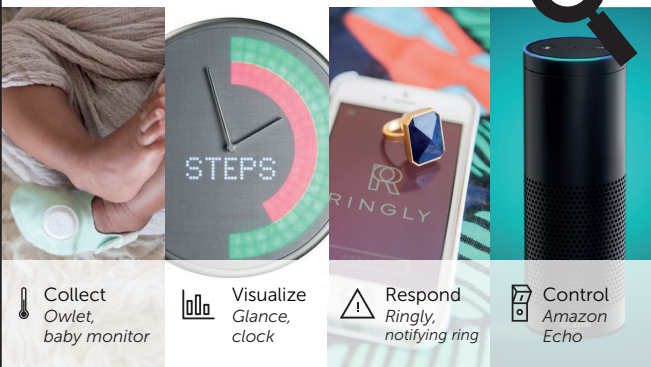
## CONNECTIVITY

5



## DATA

8



## INTERACTION INTERFACES

7

