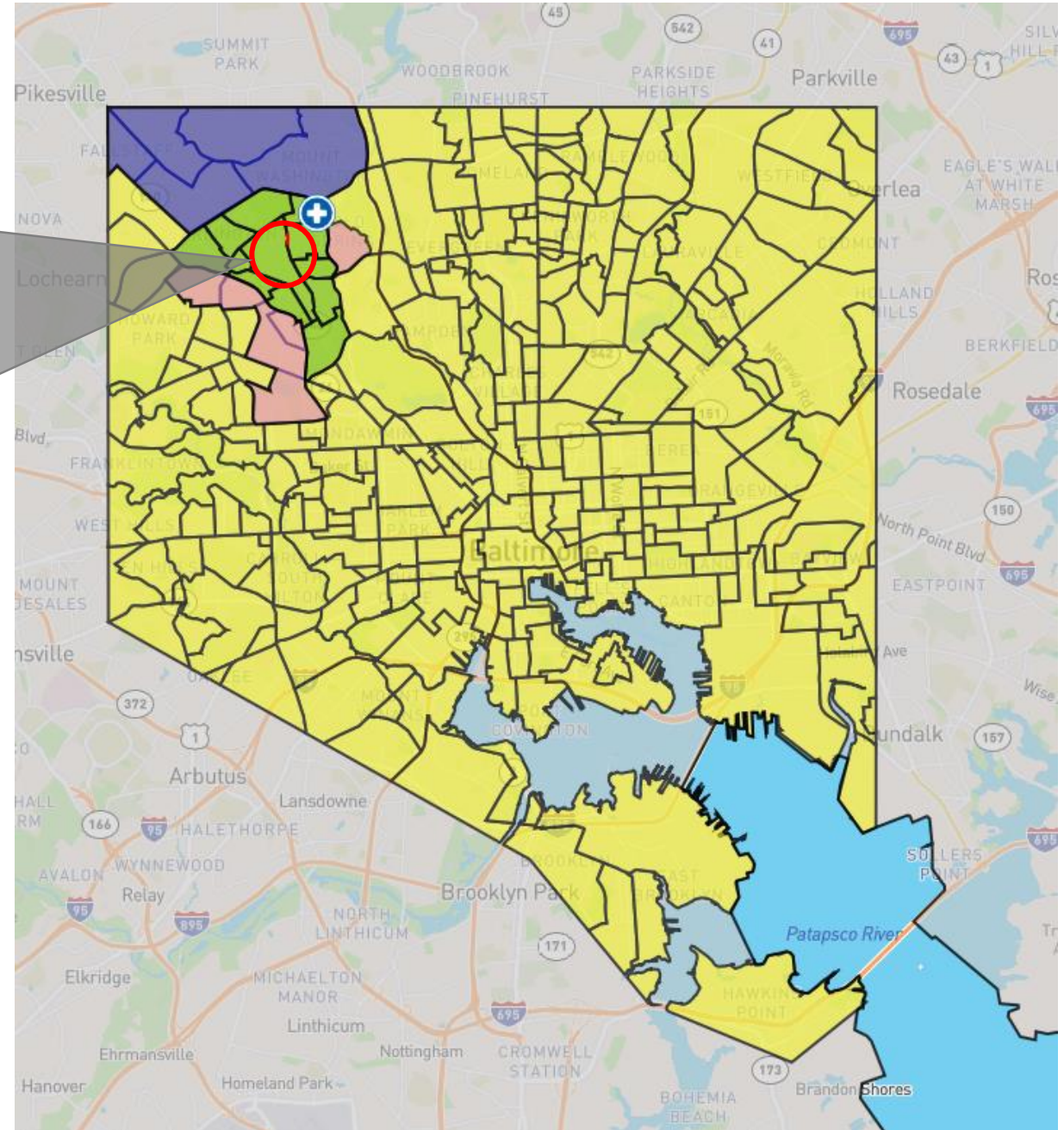
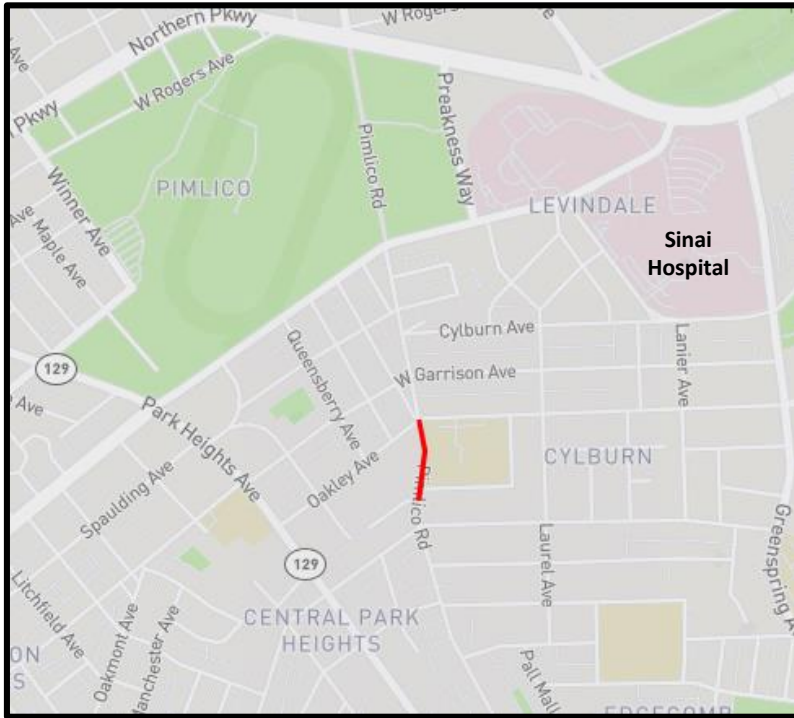


## Map 1: Baltimore City Live Near Your Work Eligible Areas



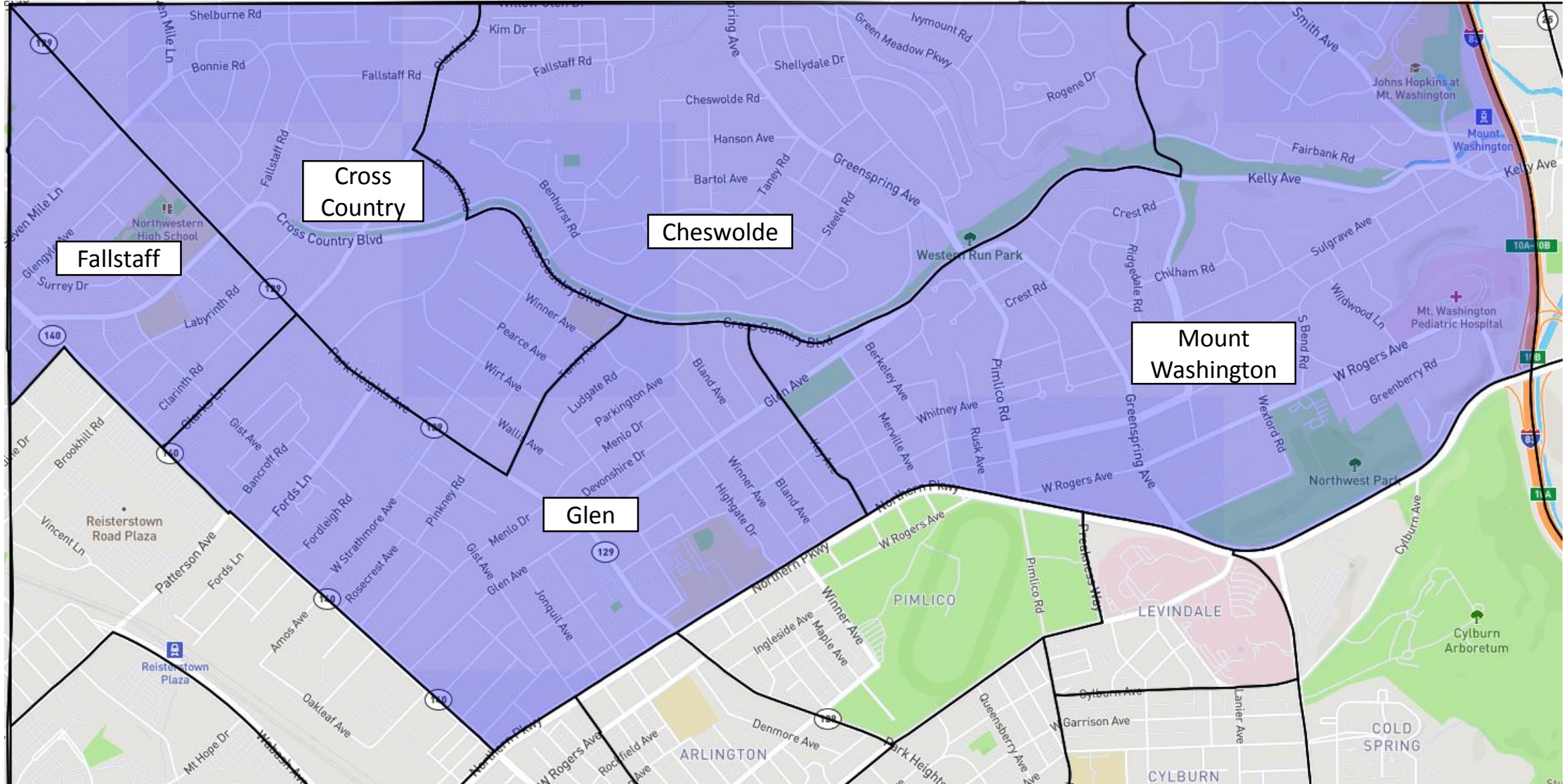
### Key

- = \$1,000 – Other Baltimore City Neighborhoods
- = \$1,500 – Neighborhoods North of Core
- = \$2,500 – Neighborhoods East and West of Core
- = \$10,000– Core Park Heights Neighborhoods
- = \$18,000 – 4800 Block of Pimlico Ave
- + = Sinai Hospital



Map 2: Neighborhoods North of Core  
Live Near Your Work Benefit: \$1,500

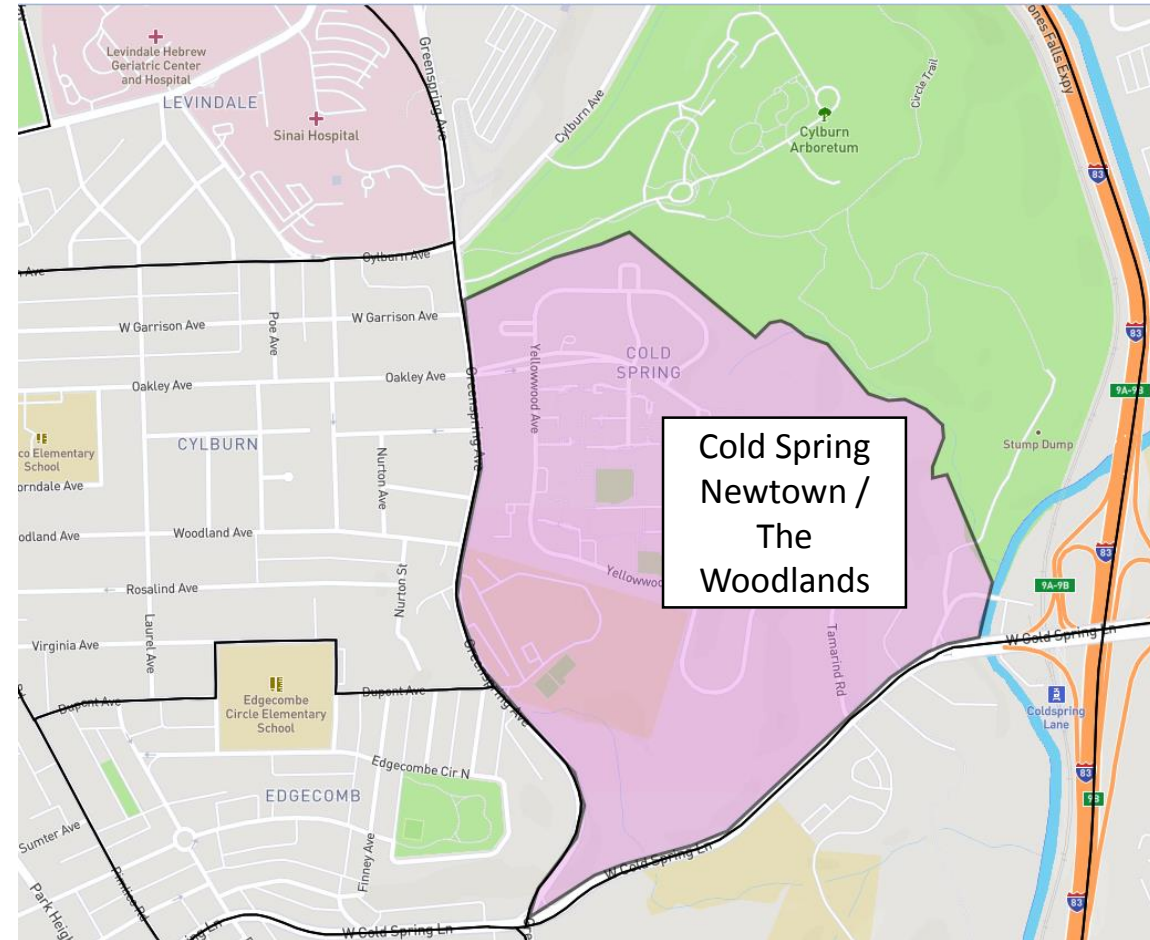
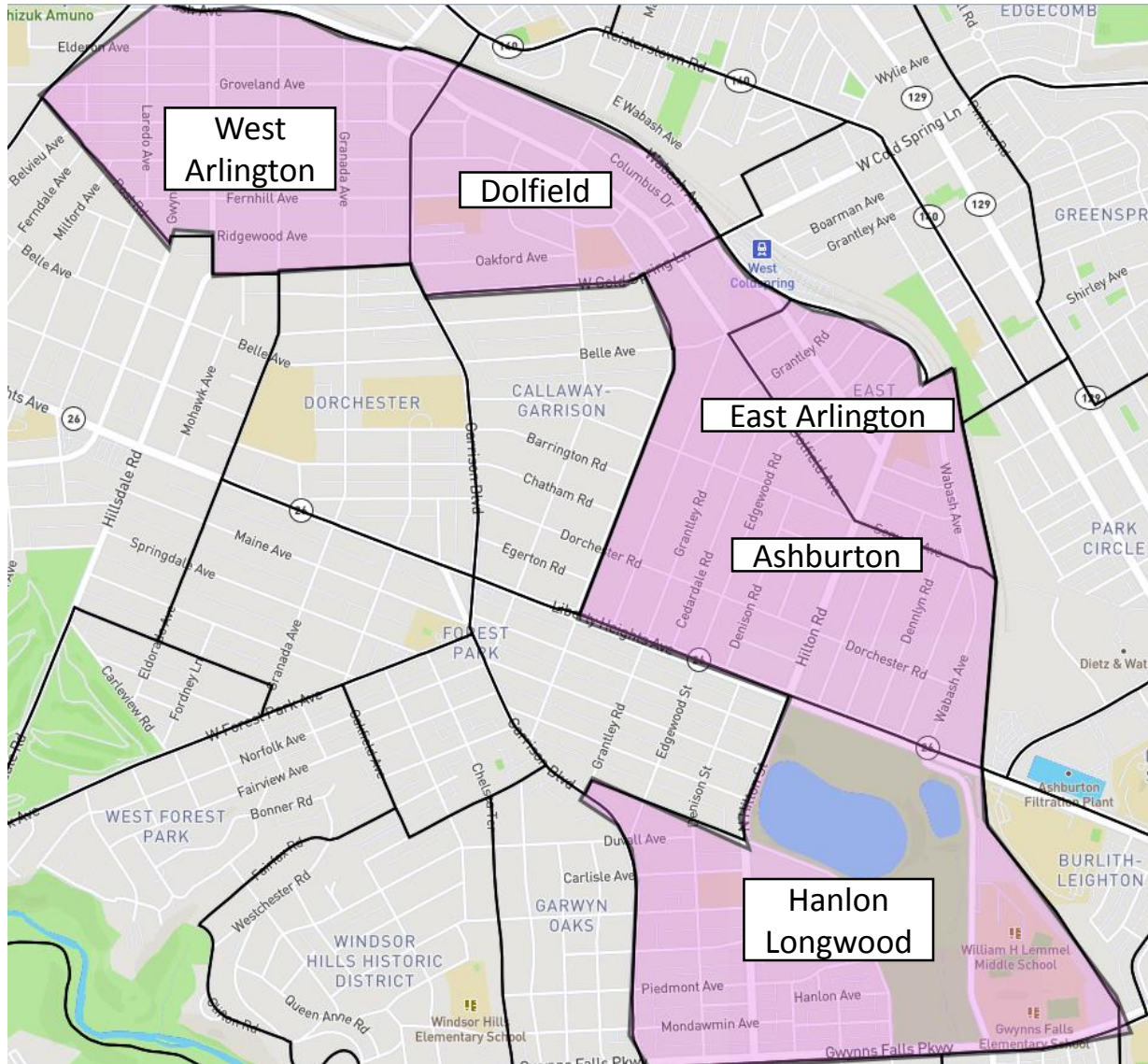
- Cheswolde
- Cross Country
- Fallstaff
- Glen
- Mount Washington





Map 3: Neighborhoods East and West of Core  
Live Near Your Work Benefit: \$2,500

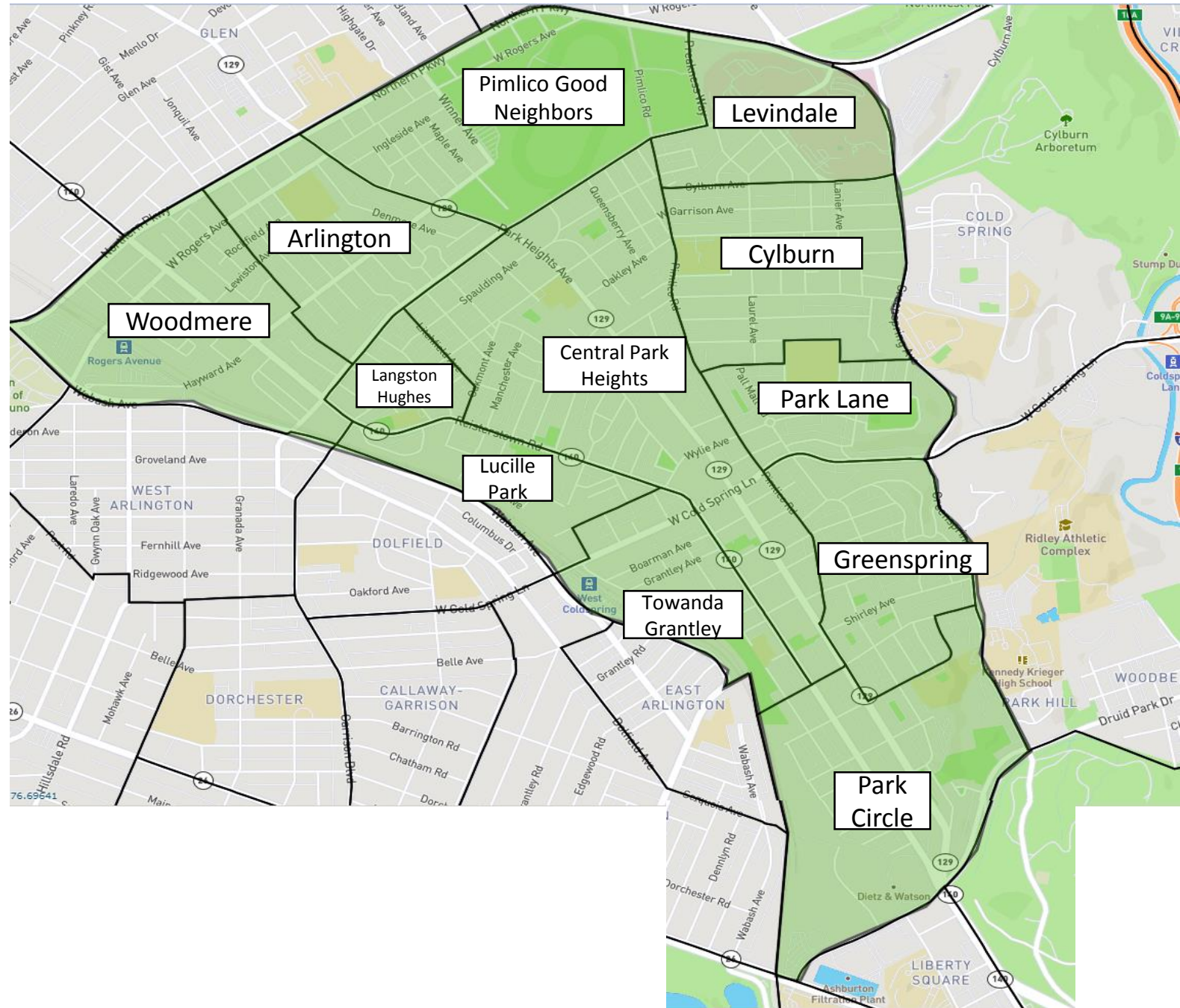
- Ashburton
- Cold Spring Newtown/ The Woodlands
- Dolfield
- East Arlington
- Hanlon-Longwood
- West Arlington





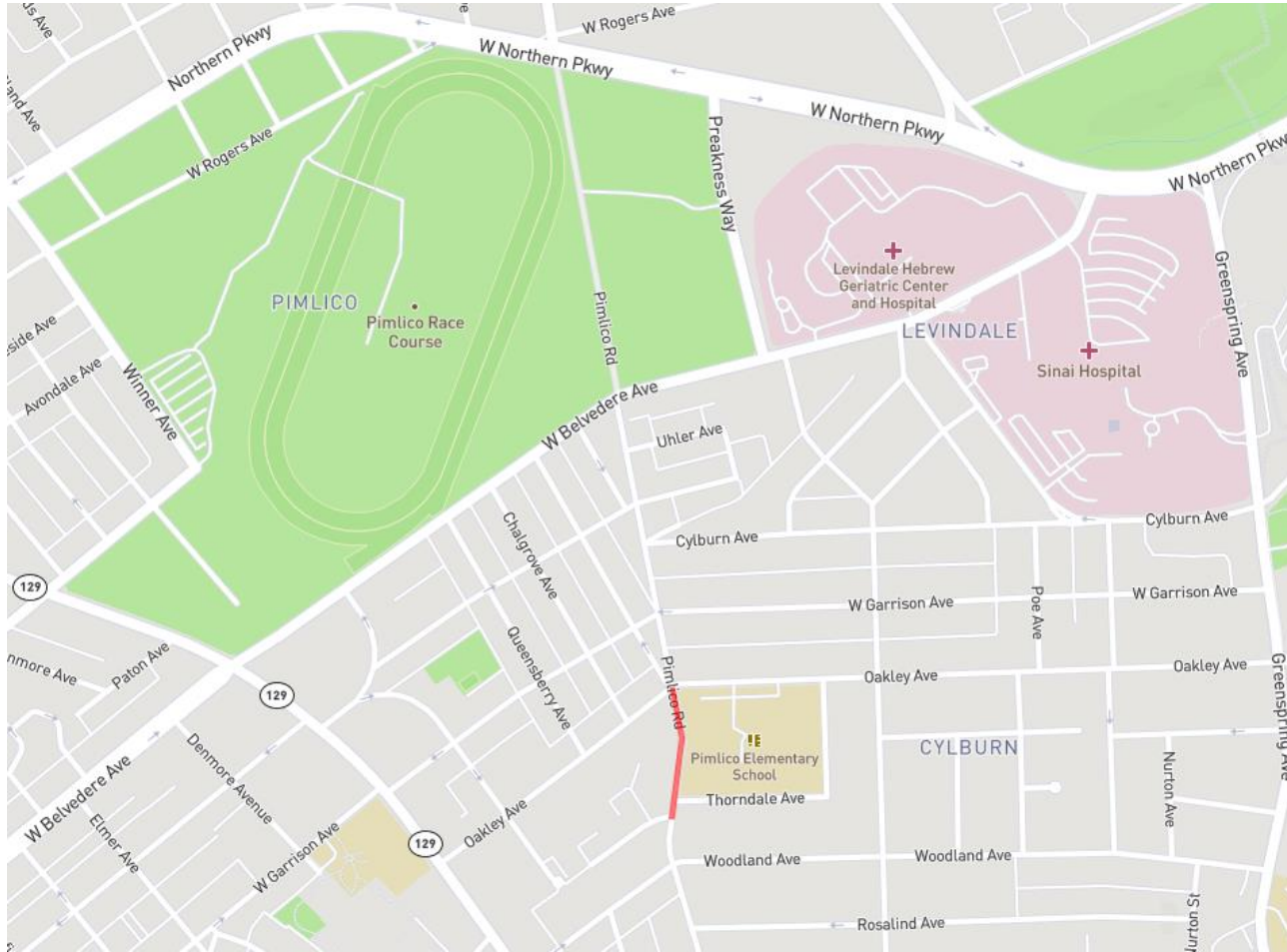
## Map 4: Core Park Heights Neighborhoods Live Near Your Work Benefit: \$10,000

- Arlington
- Cylburn
- Central Park Heights
- Greenspring
- Langston Hughes
- Levindale
- Lucille Park
- Park Lane
- Park Circle
- Pimlico Good Neighbors
- Towanda Grantley
- Woodmere

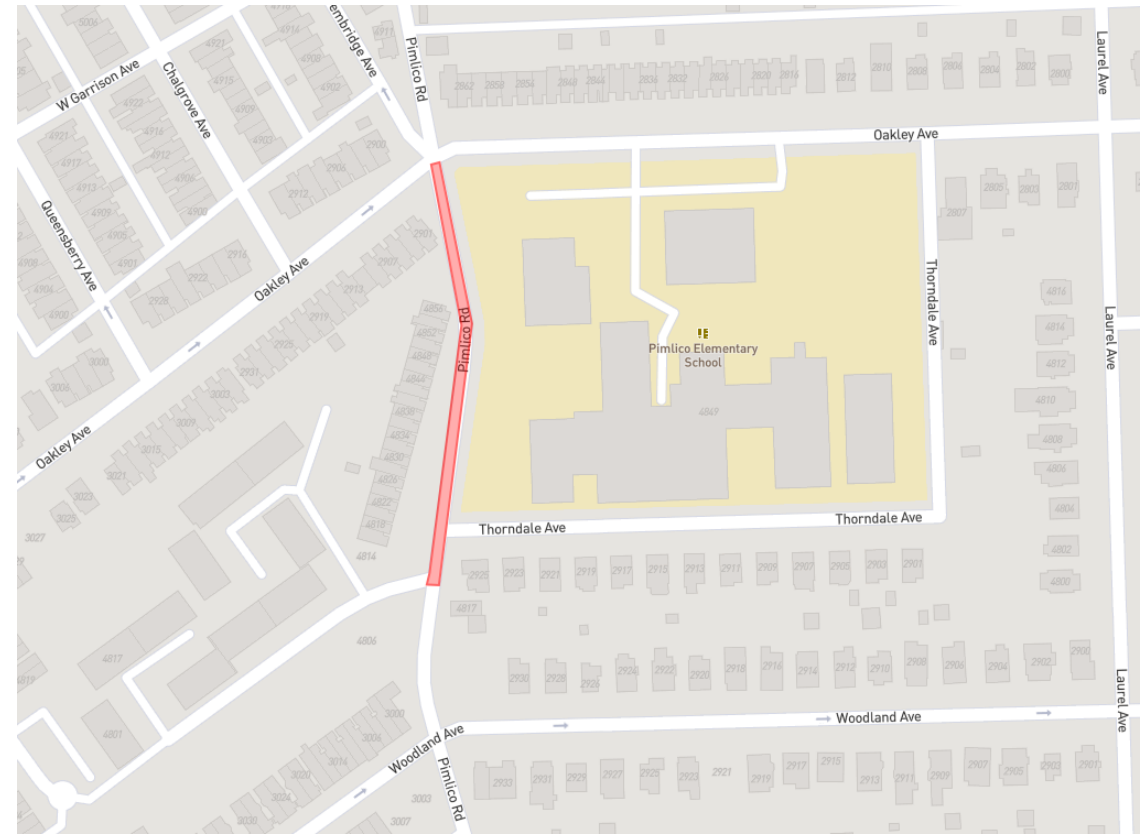


# Map 5: 4800 Block of Pimlico Road Live Near Your Work Benefit: \$18,000

Zoomed Out (Includes Pimlico Race Course, Sinai Hospital, and Levindale Hospital)



Zoomed In (Includes only Pimlico Elementary School and Surrounding Roads)

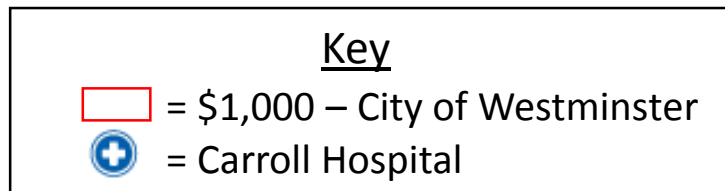




Map 6: Baltimore County  
Live Near Your Work Eligible Areas



## Map 7: City of Westminster Live Near Your Work Eligible Areas



Updated March 2019

