

Just Cool[®]

AWDis



POLYESTER FABRIC
neoteric
smooth



Style: JCA001 – Adult S/S Cool T



- Fabric: 100% Polyester
- Weight: 4.1oz
- Self-fabric taped back neck
- Twin needle stitching detail
- Inherent stretch fabric properties
- Easy tear-away labels for easy rebranding
- Relaxed fit
- Available in 30 colors
- Case Quantities: 72 units
- Sizes: S – 5XL – (Arctic White & Jet Black)

Crafted from a lightweight Neoteric Smooth fabric to wick moisture away from the skin to ensure you stay cool and dry



2 WAY STRETCH



WICKING



QUICK DRY



LIGHTWEIGHT

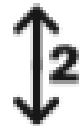


30+ UPF

Style: JCY001 – Youth S/S Cool T



- Fabric: 100% Polyester
- Weight: 4.1oz
- Self-fabric taped back neck
- Twin needle stitching detail
- Inherent stretch fabric properties
- Tear away labels for easy rebranding
- Relaxed fit
- Available in 14 colors
- Case Quantities: 72 units
- Sizes: XS – XL



2 WAY STRETCH



WICKING



QUICK DRY



LIGHTWEIGHT

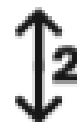


30+ UPF

Style: JCA002 – Adult L/S Cool T



- Fabric: 100% Polyester
- Weight: 4.1oz
- Self-fabric taped back neck
- Twin needle stitching detail
- Inherent stretch fabric properties
- Tear away labels for easy rebranding
- Relaxed fit
- Available in 7 colors
- Case Quantities: 72 units
- Sizes: S – 3XL



2 WAY STRETCH



WICKING



QUICK DRY



LIGHTWEIGHT



30+ UPF

Style: JCA005 – Ladies S/S Cool T



**New Color
Add for 2020**



Kelly Green

- Fabric: 100% Polyester
- Weight: 4.1oz
- Self-fabric taped back neck
- Twin needle stitching detail
- Inherent wicking & stretch fabric properties
- Tear away labels for easy rebranding
- Relaxed fit
- Available in 9 colors
- Case Quantities: 72 units
- Sizes: XS – 2XL

With a feminine fit and non-restrictive design, this is an essential for you activewear wardrobe



2 WAY STRETCH



WICKING



QUICK DRY



LIGHTWEIGHT



30+ UPF



- Fabric: 100% Polyester
- Weight: 4.1oz
- Self-fabric taped back neck
- Twin needle stitching detail
- Inherent stretch fabric properties
- Tear away labels for easy rebranding
- Relaxed fit
- Available in 4 colors
- Case Quantities: 72 units
- Sizes: S – 3XL



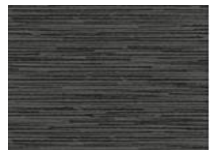
This contrast color is a great product for team sports, with raglan sleeves to create a full range of motion.



Style: JCA037 – Cool Cowl Neck



- Fabric: 92% Polyester/8% Spandex
- Weight: 6.2oz
- Flat-lock stitching detail
- Reflective elements on hood and back neck
- Inherent stretch fabric properties
- Raglan sleeve design with thumb-hole openings
- Easy tear-away labels for easy rebranding
- Available in 5 colors
- Case Quantities: 24 units
- Sizes: S – 3XL



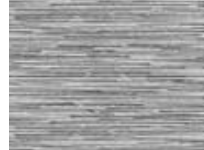
Black Slate



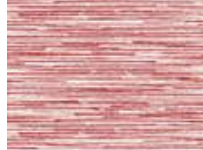
Navy



Royal



Grey



Red



2 WAY STRETCH



QUICK DRY

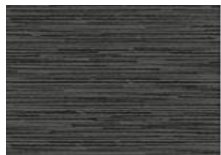


LIGHTWEIGHT

Style: JCA038 – Ladies Cool Cowl Neck



- Fabric: 92% Polyester/8% Spandex
- Weight: 6.2oz
- Flat-lock stitching detail
- Reflective elements on hood and back neck
- Inherent stretch fabric properties
- Raglan sleeve design with thumb-hole openings
- Easy tear-away labels for easy rebranding
- Available in 5 colors
- Case Quantities: 24 units
- Sizes: XS – 2XL



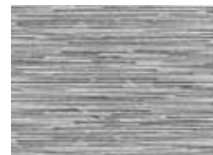
Black Slate



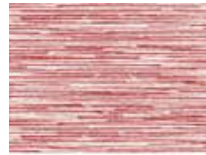
Electric Pink



Royal



Grey



Red



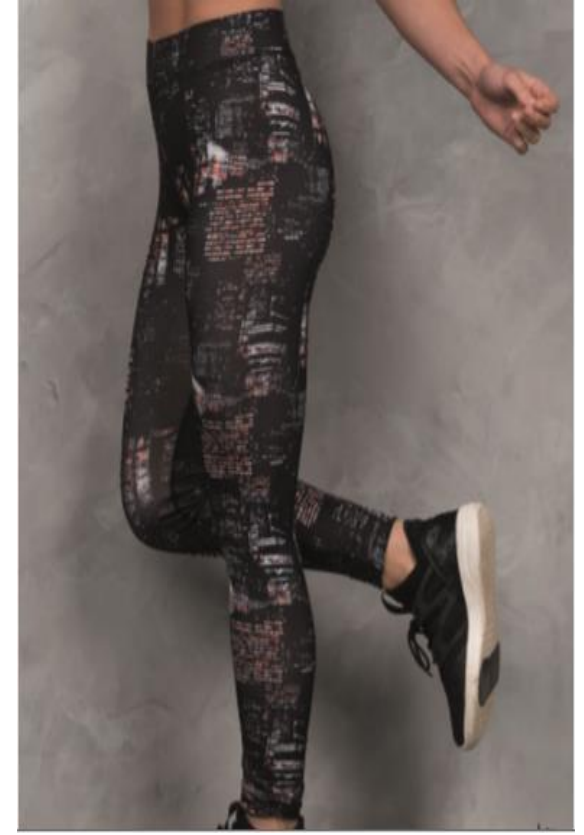
2 WAY STRETCH



QUICK DRY



LIGHTWEIGHT



Push your workout to the next level
with these ultimate workout leggings

Style: JCA070 – Ladies Workout Leggings



- Fabric: 86% Polyester/14% Spandex
- Weight: 9.9oz
- Flat-lock stitching detail for Comfort
- Active Fit
- Smooth Finish
- Polyester/Spandex blend fabric
- Available in 1 color – Jet Black
- Case Quantities: 48 units
- Sizes: XS – XL



4 WAY STRETCH



WICKING



QUICK DRY



LIGHTWEIGHT

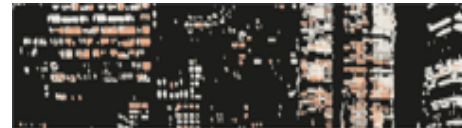
Style: JCA077 – Ladies Printed Leggings



- Fabric: 86% Polyester/14% Spandex
- Weight: 9.9oz
- Elasticated smooth waistband
- Flat-lock stitching for Comfort
- Flat seams for less irritation
- Full length for a sleek finish
- Available in 2 colors
- Case Quantities: 48 units
- Sizes: XS – XL



Fashion Green Camo



City Nights



4 WAY STRETCH



WICKING



QUICK DRY



LIGHTWEIGHT

- Just Cool poly product are crafted from a lightweight Smooth Neoteric Fabric – creating a great platform for Screen Printing, Sublimation, or Heat Transfers
- Sell the Just Cool products with confidence. We only partner with factories that meet our high standards and commitment across human resources, health and safety, environmental practices, legal compliance, security and local laws that's why all facilities WRAP certified.
- Great opening price point products to target large scale Poly end-users.
- Easy tear away labels which makes them perfect for rebranding
- Prop 65 Complaint

