

How ComponentOne Web Parts Improve the SharePoint Experience

ComponentOne Studio for SharePoint contains three Web Parts that connect to all popular data sources and display them in grid, chart, and map form. They are the only Web Parts that give you a point-and-click interface to select the data sources and completely configure how the data is displayed. The design experience is not only fast, but doesn't require developers. Imagine having the power to create impressive data-based portals in minutes, without writing any code!

Read this document to learn how our Web Parts are unique and how they will help you. You will learn details about each benefit ComponentOne Web Parts deliver as well as screen shots, and links for documentation, tutorials, and samples.



This document contains links to the ComponentOne SharePoint Web Parts Demo Site. Please use the following log in credentials:

Username: sitevisitor

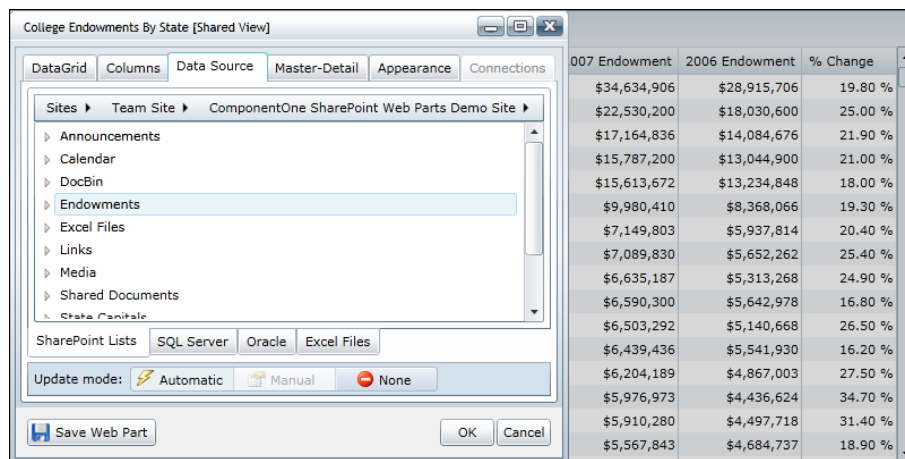
Password: sitevisitor

Be more productive than ever (with the easiest-to-use web parts)	2
Give more power to your users (and get rid of the backlog).....	3
Get to your data easily (whatever it is, wherever it is!)	4
Make your pages faster and smoother (with RIA performance and behavior)	5
Create interactive pages easily (by connecting your webparts to one another).....	6
How can our DataGrid help you?.....	7
How can our Chart help you?	8
How can our Maps help you?	9
Coding Optional.....	10



BE MORE PRODUCTIVE THAN EVER (WITH THE EASIEST-TO-USE WEB PARTS)

All of our web parts have On-Board Designers. The designers are simple dialogs that open in the Web Part zone and allow you to configure everything about the part, including data source, appearance, and behavior. These designers are available for all our web parts and share a common framework, so they are 100% consistent. Develop rich, interactive SharePoint pages in minutes, without writing any code at all. The time savings are likely to cover the cost of the license on your first project.



THE ON-BOARD DESIGNER APPEARS IN THE WEB PART AREA. NO LOAD TIME!

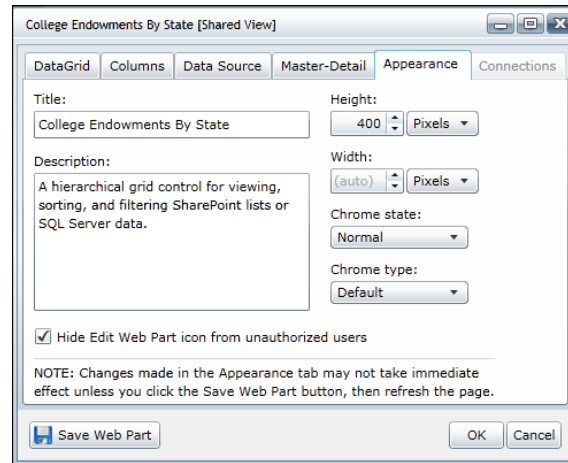
Resources:

See for yourself by using the On-Board Designer on our live tutorial sites:

- [DataGrid Tutorial](#)
- [Chart Tutorial](#)
- [Maps Tutorial](#)

GIVE MORE POWER TO YOUR USERS (AND GET RID OF THE BACKLOG)

Do you have users constantly asking for new, customized views of their data (charts, grids, reports, etc.)? Remove the bottleneck by giving them the power to use the On-Board Designers themselves. Once you enable the designers, users will be able to configure the parts themselves and create their own personalized versions of every page you design. It's that easy!



CLEAR THE CHECKBOX AND YOUR END-USERS CAN USE THE ON-BOARD DESIGNER TO CONFIGURE THEIR OWN VIEWS.

Resources:

See an example of this behavior on our live demo site:

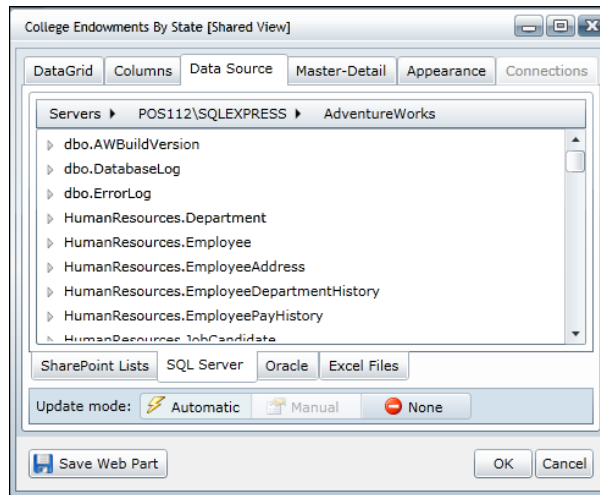
- Visit the [Maps sample page](#) to see a Web Part that has the designer disabled for end-users.
- Visit the [Maps tutorial page](#) to see the same Web Part with the designer view enabled.

Read the documentation topic about appearance properties:

- [Setting Properties Using the C1 Web Part Appearance Tab](#)

GET TO YOUR DATA EASILY (WHATEVER IT IS, WHEREVER IT IS!)

Would you like to access data in one or more SharePoint lists? In Microsoft SQL Server or Oracle databases? In Microsoft Excel files? Perhaps your data is in a different domain? Or maybe it is hierarchical? Doesn't matter. Really. Just open the On-Board Designer and select the data from easy-to-use lists. There's no need to write code, use additional components, or use arcane command sequences. It's all simple point and click. You will be spoiled.



CONNECTING TO DATA IS AS SIMPLE AS NAVIGATING TO A DATABASE AND CHOOSING A TABLE.

Resources:

Every Web Part has the same interface to connect to data sources. Follow the DataGrid Tutorial on our live tutorial site to experience a SharePoint List and a SQL Server connection process:

- [DataGrid Tutorial](#)

Read the documentation topics about connecting to data sources:

- [Using a SharePoint List Data Source](#)
- [Using a SQL Server Table Data Source](#)
- [Using Oracle as a Data Source](#)
- [Using Microsoft Excel as a Data Source](#)



MAKE YOUR PAGES FASTER AND SMOOTHER (WITH RIA PERFORMANCE AND BEHAVIOR)

Are you tired of the old “Web 1.0” look and feel of your SharePoint pages? Sluggish performance, flickering post-backs, paged grids that show bits of your data at a time? Our web parts are all Silverlight-based. Allow users to see the data they want at once, flat or hierarchical. Scroll, filter, group, all without lengthy post-backs or artificial limitations. Give them RIA performance right out of the box, no code required.

Institution	Rank	State	2007 Endowment	2006 Endowment	% Change
AB					
University of Alberta	99	AB	\$722,539	\$557,722	29.60 %
AK					
University of Alaska and Foundation	201	AK	\$310,802	\$266,389	16.70 %
AL					
University of Alabama System	77	AL	\$999,816	\$848,848	17.80 %
Auburn University and Foundation	158	AL	\$420,840	\$360,070	16.90 %
University of South Alabama (USA) Foundation	198	AL	\$318,769	\$290,502	9.70 %
Samford University	203	AL	\$301,044	\$272,356	10.50 %
Birmingham-Southern College	357	AL	\$113,090	\$114,358	-1.10 %
Troy State University	646	AL	\$27,178	\$21,105	28.80 %
University of Montevallo	688	AL	\$19,968	\$17,219	16.00 %
Faulkner University	701	AL	\$18,532	\$16,667	11.20 %
AR					
University of Arkansas and Foundation	86	AR	\$876,839	\$763,069	14.90 %
Hendrix College	267	AR	\$192,182	\$159,678	20.40 %

SCROLL, FILTER, GROUP, SORT, AND VIEW RELATED DATA INSTANTLY. NO PAGE RELOADS. EVER.

Resources:

Visit the DataGrid Sample site to see a live grid in action.

[DataGrid Sample Site](#)

Read the documentation topics about the DataGrid’s end-user features:

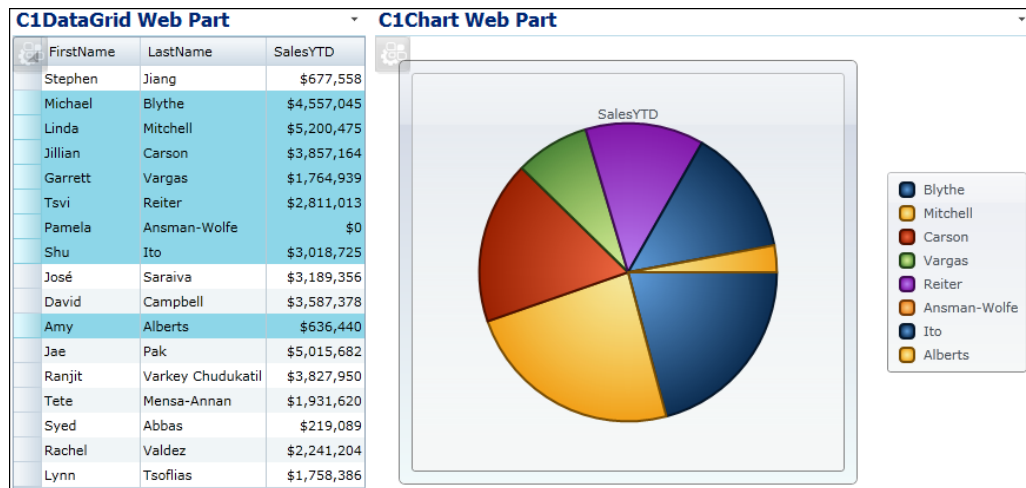
[Working with Columns](#)

[Working with Rows](#)



CREATE INTERACTIVE PAGES EASILY (BY CONNECTING YOUR WEBPARTS TO ONE ANOTHER)

All of the ComponentOne Web Parts share the same common infrastructure, making it is easy for them to communicate. Use a grid to show high-level data, connect it to a chart to show details for the selected rows, or to a map to show where everything is located. Create rich interactive pages easily and quickly, using a simple and consistent object model.



CONNECT WEB PARTS TO SEND DATA TO ONE ANOTHER.

Resources:

See pages with connected Web Parts, including what you see above, on our live demo site.

- 🔗 [Sales Performance Sample](#) (Grid-to-Chart)
- 🔗 [Capital Finder Sample](#) (Grid-to-Map)

Read the documentation topics about connecting ComponentOne Web Parts:

- 🔗 [Creating Connections between C1 Web Parts](#)
- 🔗 [Receiving Data from SharePoint Web Parts](#)



HOW CAN OUR DATAGRID HELP YOU?

Show and edit data from any source without any special setup. Support hierarchical data, filtering, sorting, grouping, and editing without code. Customize columns with formats, display images and hyperlinks. Scroll quickly through large data sets without page refreshes or post-backs. Allow users to personalize their views and see exactly what they want, the way they want. Do all this in minutes, without writing a single line of code.

Institution	Rank	State	2007 Endowment	2006 Endowment	% Change
AB					
University of Alberta	99	AB	\$722,539	\$557,722	29.60 %
AK					
University of Alaska and Foundation	201	AK	\$310,802	\$266,389	16.70 %
AL					
University of Alabama System	77	AL	\$999,816	\$848,848	17.80 %
Auburn University and Foundation	158	AL	\$420,840	\$360,070	16.90 %
University of South Alabama (USA) Foundation	198	AL	\$318,769	\$290,502	9.70 %
Samford University	203	AL	\$301,044	\$272,356	10.50 %
Birmingham-Southern College	357	AL	\$113,090	\$114,358	-1.10 %
Troy State University	646	AL	\$27,178	\$21,105	28.80 %
University of Montevallo	688	AL	\$19,968	\$17,219	16.00 %
Faulkner University	701	AL	\$18,532	\$16,667	11.20 %
AR					
University of Arkansas and Foundation	86	AR	\$876,839	\$763,069	14.90 %
Hendrix College	267	AR	\$192,182	\$159,678	20.40 %

FULL-FEATURED GRID VIEW ON YOUR SHAREPOINT PAGE WITHOUT WRITING A LINE OF CODE.

Resources:

Visit the DataGrid Sample site to see a live grid in action.

[DataGrid Sample Site](#)

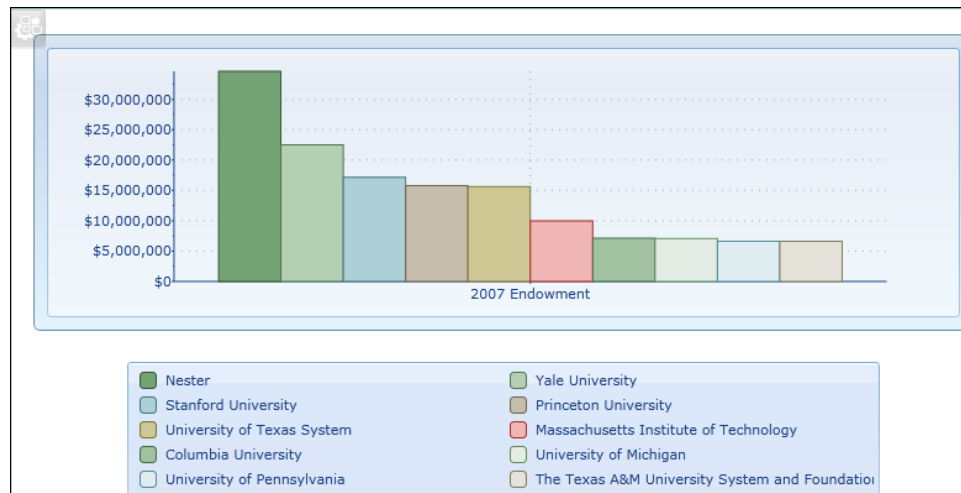
Read the DataGrid section of the Web Parts documentation:

[C1DataGrid Web Part](#)



HOW CAN OUR CHART HELP YOU?

If you know how to create charts in Microsoft Excel, you know how to use our charting control. It's that easy. Select the data source by pointing and clicking, and instantly obtain visually stunning charts with professionally designed visual styles. Customize the appearance further with the easy-to-use On-Board Designer, or allow your users to personalize their charts so you don't have to. Do all this in minutes, without writing a single line of code.



IMPRESSIVE CHARTS CAN BE CREATED BY ANYBODY.

Resources:

Visit the Chart Sample site to see a live chart in action.

[Chart Sample Site](#)

Read the Chart section of the Web Parts documentation:

[C1Chart Web Part](#)



HOW CAN OUR MAPS HELP YOU?

Do you have geographical data? You don't need longitude and latitude data, simple addresses will do. Show where your customers and suppliers are located (or the location of anything else that has an address). Assign images and associate actions with each data point, so your users can zoom, pan, and drill down to see information in whole new ways. Do all this in minutes, without writing a single line of code.



DEPLOY INTERACTIVE MAPS TO EASILY COMMUNICATE LOCATION BASED INFORMATION.

Resources:

Visit the Chart Sample site to see a live chart in action.

[Maps Sample Site](#)

Read the Chart section of the Web Parts documentation:

[C1Maps Web Part](#)



CODING OPTIONAL

The On-Board Designers make creating and configuring ComponentOne Web Parts a simple matter of pointing-and-clicking. But, if you need to go beyond the designer options, feel free to use code to customize the Web Parts even further. Ease of use and extensibility go very well together.



CUSTOM CODE RETRIEVES LIVE DATA FROM THE USGS WEBSITE AND INDICATES EARTHQUAKES WITH VECTOR GRAPHICS

Resources:

Visit the application sample libraries on the Web Parts Demo Site to see more custom code samples:

- [DataGrid Application Samples](#)
- [Chart Application Samples](#)
- [Maps Application Samples](#)