

# Enhanced neural reinstatement and memory for naturalistic episodes following hippocampal-targeted noninvasive stimulation



NORTHWESTERN UNIVERSITY

MELISSA HEBSCHER<sup>1</sup>, JOEL L. VOSS<sup>1</sup>  
1) Northwestern University Feinberg School of Medicine

## Background

- Episodic memory depends on widespread network of regions including hippocampus and posterior parietal lobe
- Transcranial magnetic stimulation (TMS) of lateral parietal regions with high functional connectivity to hippocampus can alter episodic memory and its neural correlates<sup>1</sup>
  - Stimulation-induced improvements in paired-associates, word-list, spatial precision tests of episodic memory<sup>2,3,4</sup>
  - Associated improvements in resting state functional connectivity
- Currently unclear whether effects of hippocampal-targeted stimulation generalize to more naturalistic forms of episodic memory, which involve distinct neural mechanisms<sup>5</sup>
  - Parietal stimulation has been shown to alter autobiographical memory<sup>6,7</sup>, but findings are inconsistent perhaps due to lack of control
- Effects of stimulation on memory-related neural activity unclear
  - Neural reinstatement thought to underlie episodic memory

## Present Study

Current study investigated effects of hippocampal-targeted parietal stimulation on memory for naturalistic video-clip episodes.

- Does hippocampal-targeted stimulation affect memory for naturalistic, complex events?
- What are the effects of hippocampal network-targeted stimulation on large-scale, multivariate memory-related neural activity?

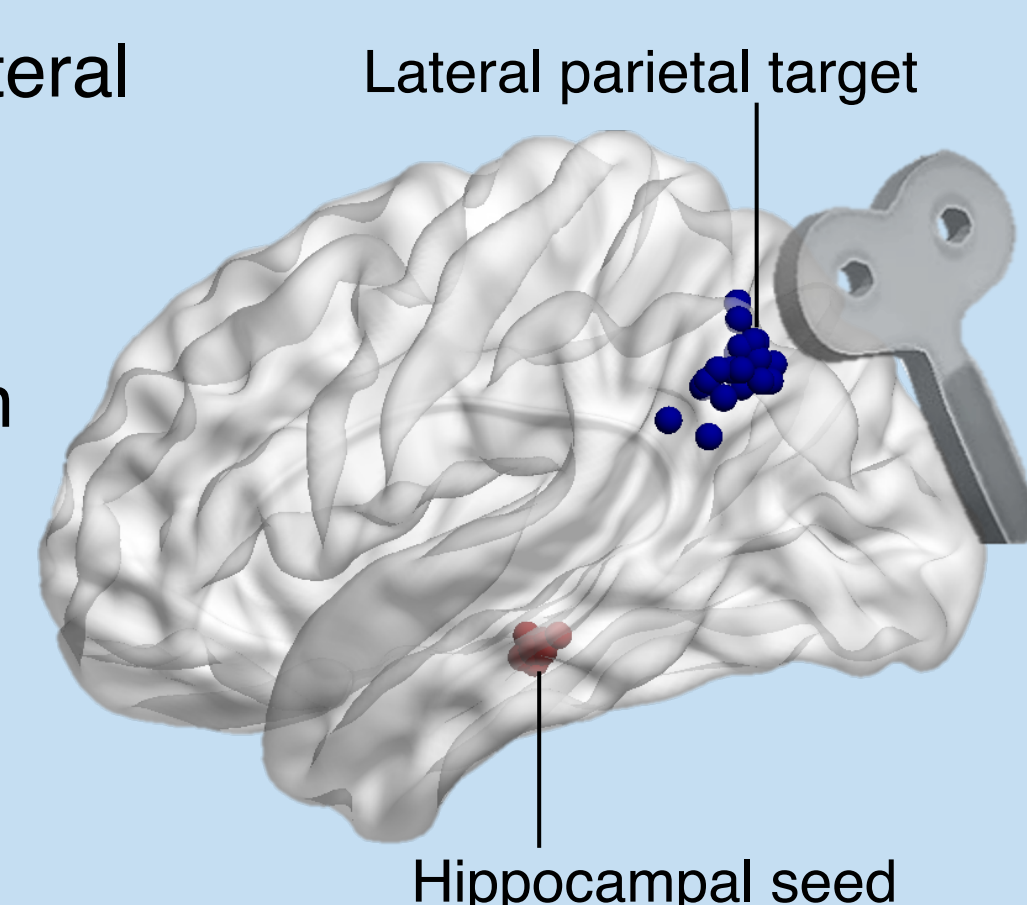
## Methods

### Study design

- 40s of TMS immediately followed by 45 min episodic memory task with fMRI (n=20)

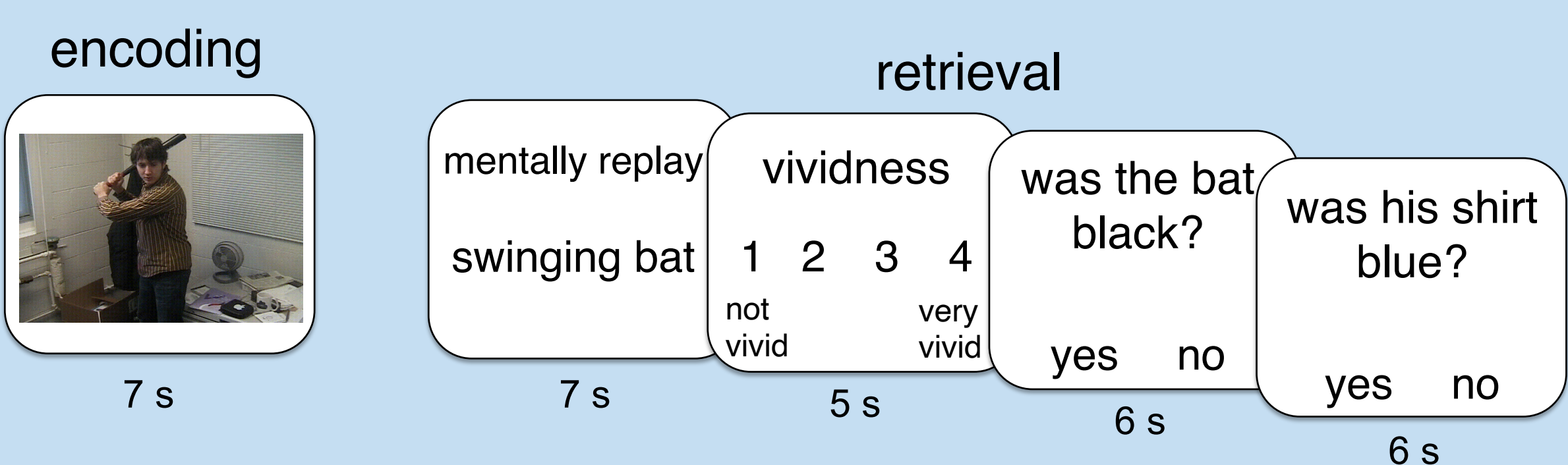
### TMS methods

- Active stimulation:** subject-specific lateral parietal target with high functional connectivity to hippocampus
- Control stimulation:** vertex stimulation (low connectivity to hippocampus)
- Continuous theta burst stimulation (cTBS) – bursts of 3 50 Hz pulses delivered at 5 Hz

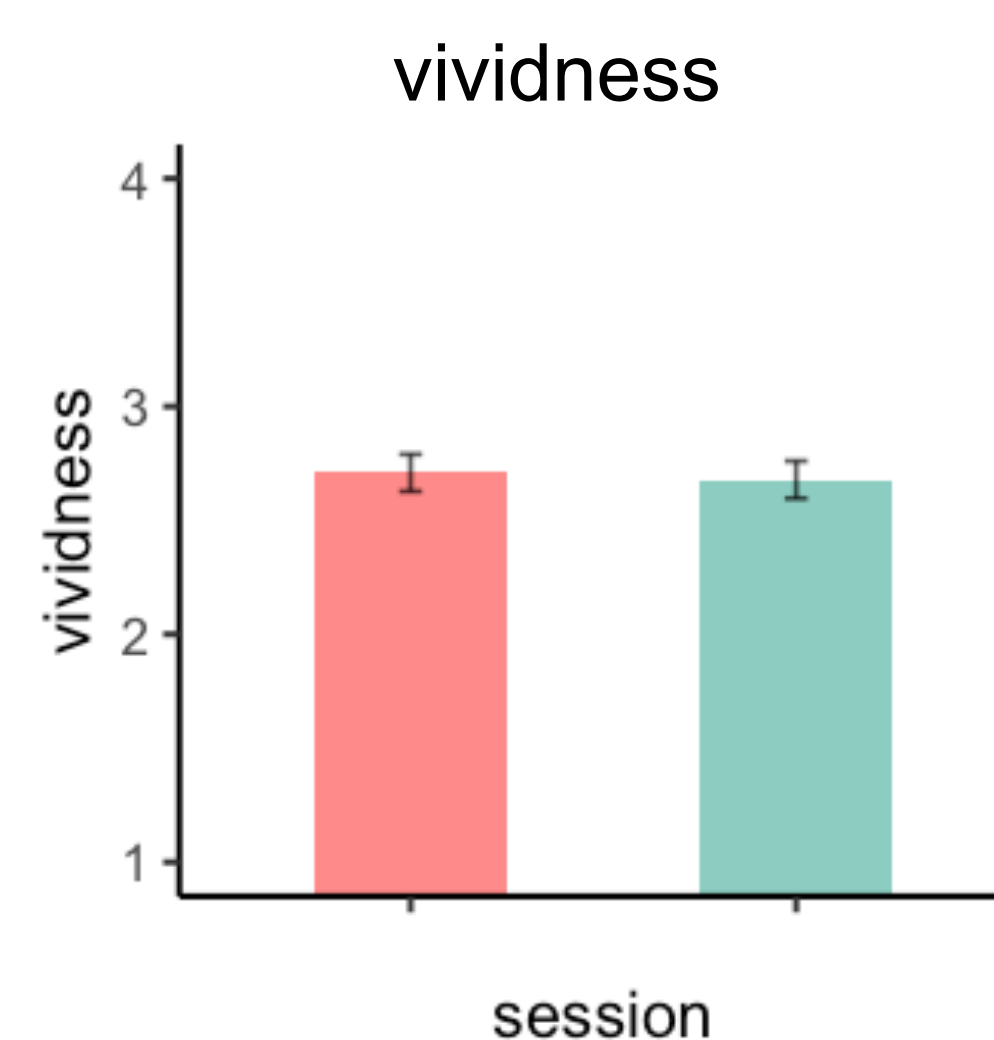
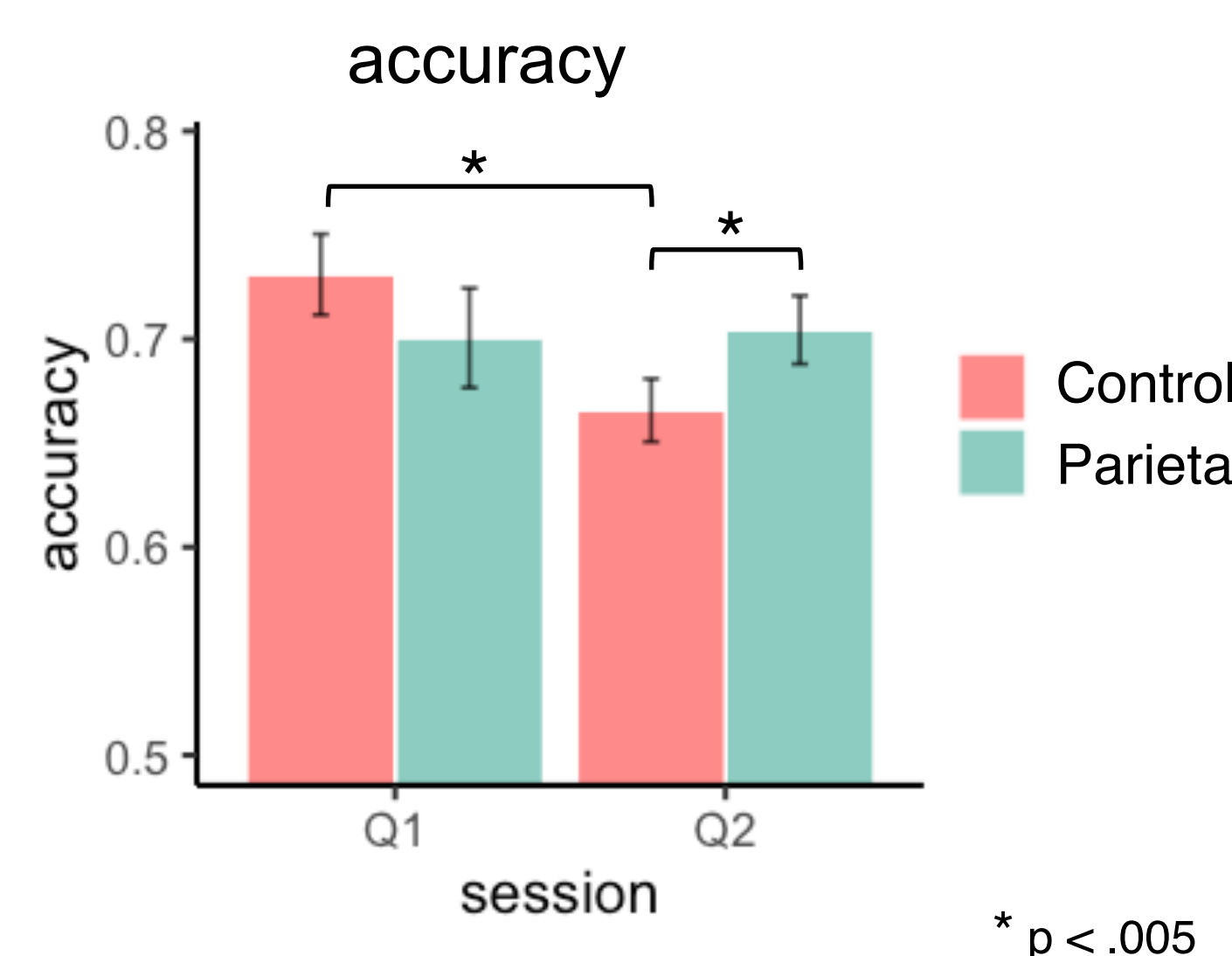


### Episodic memory task

- Encoding: 50 short videos depicting everyday events per session
- Retrieval: subjective and objective memory measures



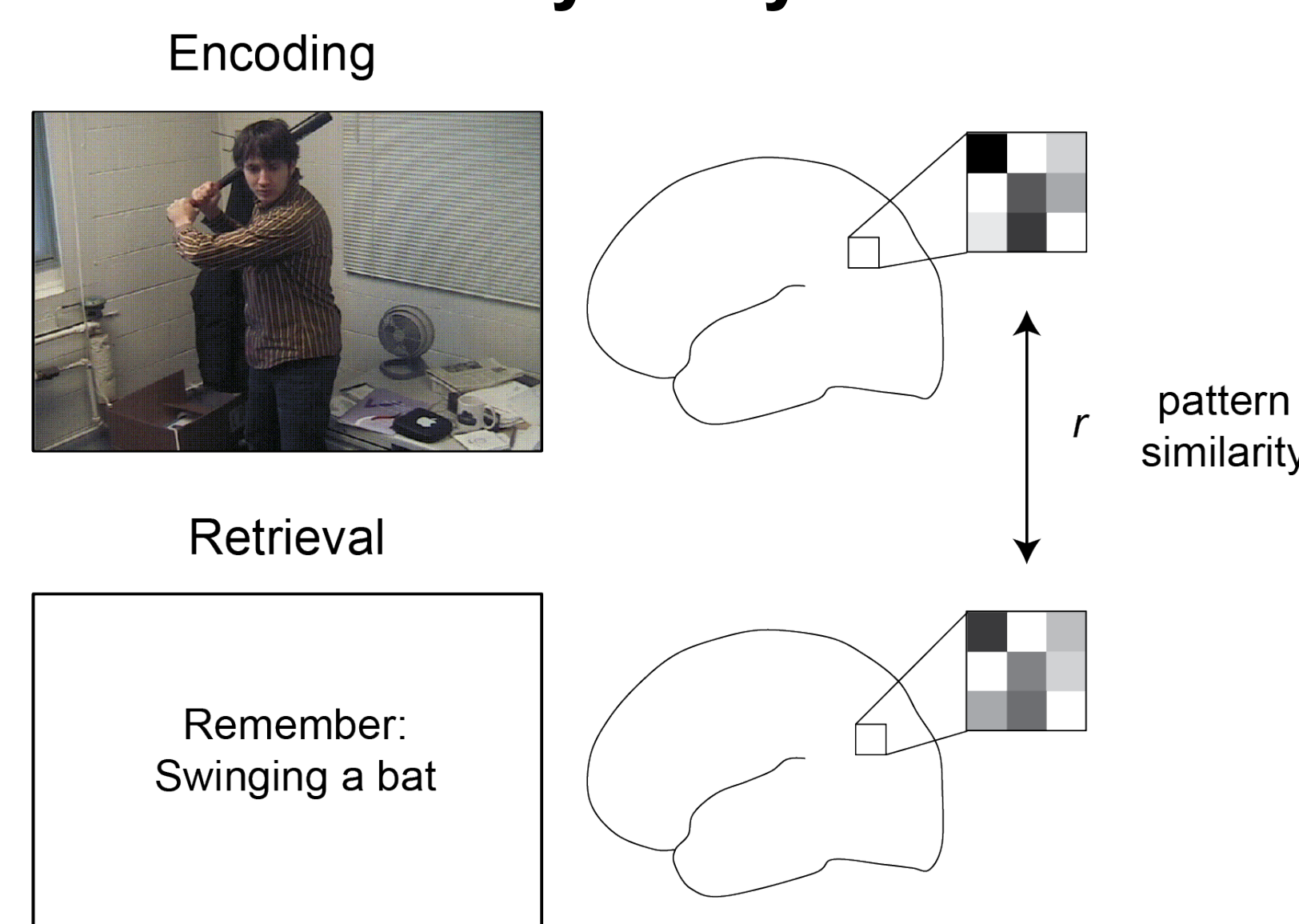
## Behavioral Results



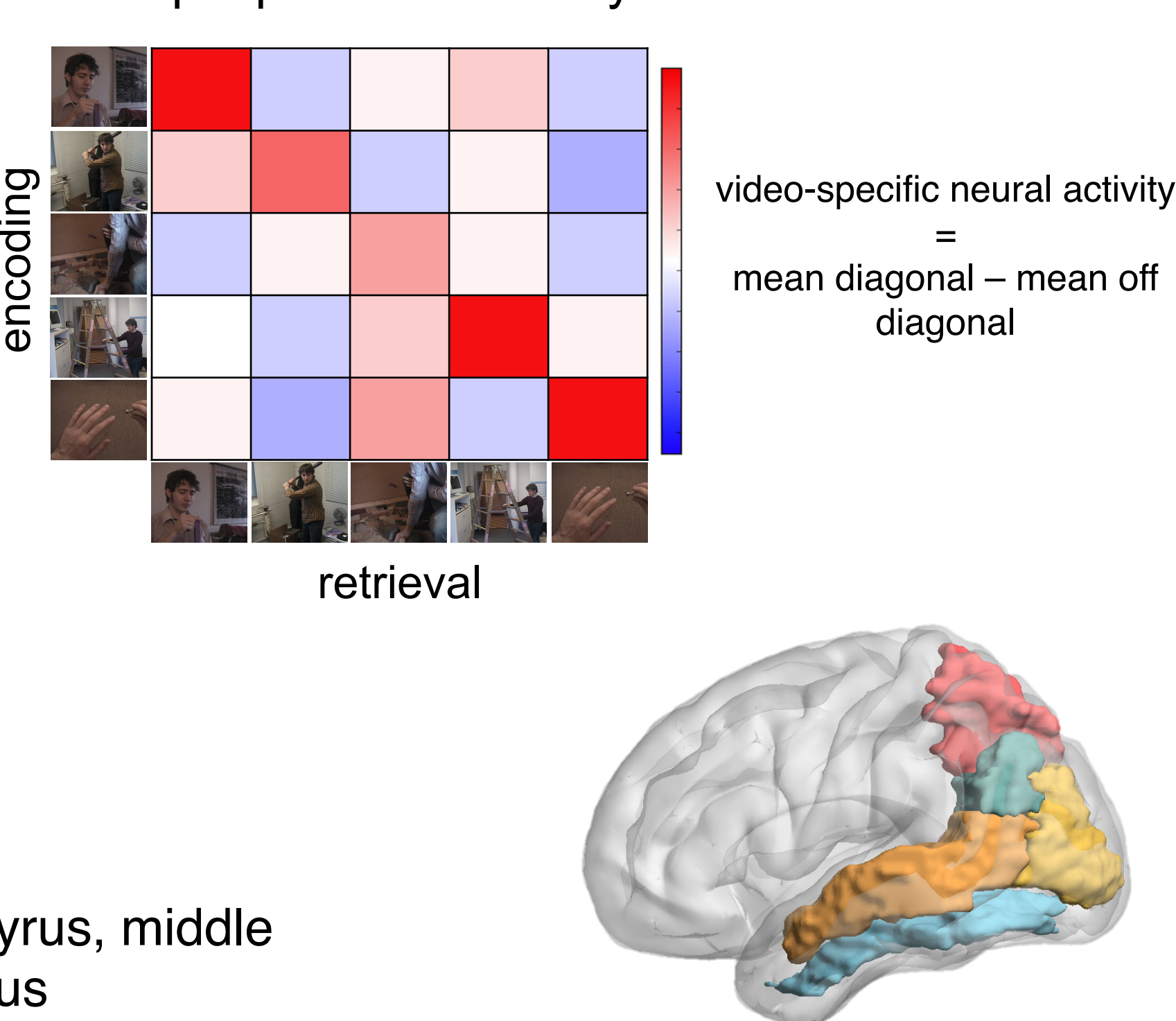
- Parietal stimulation improves objective **memory accuracy on the second question** ( $p < .005$ ) but not the first ( $p > .05$ )
- Accuracy on the second question is worse than on the first for control stim, but not for parietal stim
  - May reflect interference, rescued by parietal stimulation
- No effect of stimulation on subjective vividness ( $p > .05$ )

## Neural Reinstatement

### Pattern similarity analysis



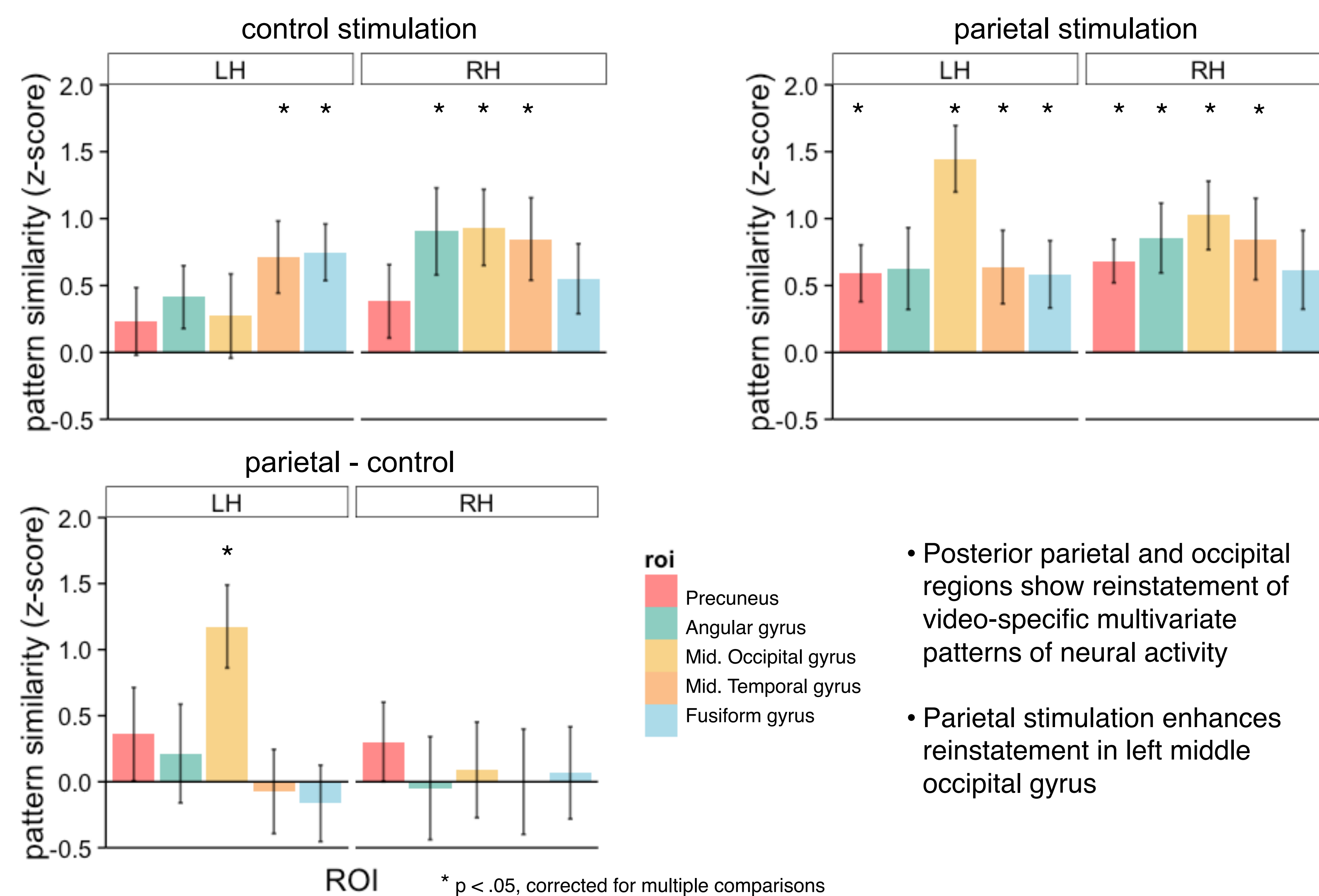
### Example pattern similarity matrix



### Regions of interest (ROIs)

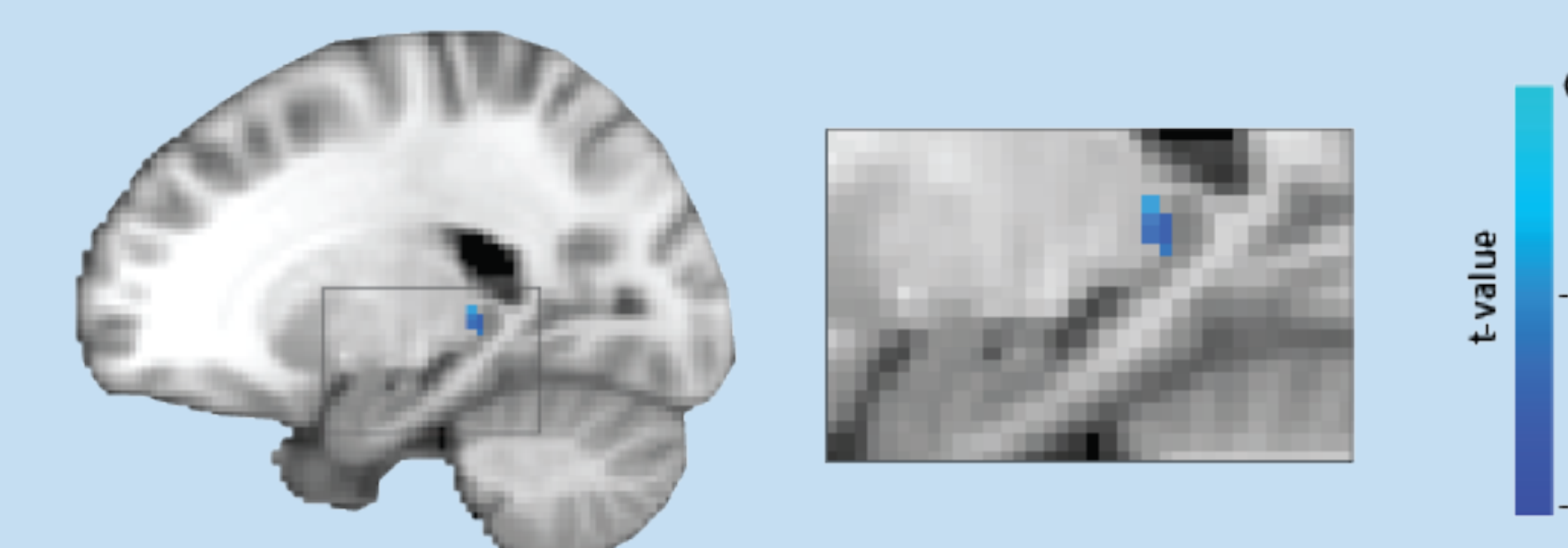
- 5 bilateral regions of interest: precuneus, angular gyrus, middle occipital gyrus, middle temporal gyrus, fusiform gyrus

### Pattern similarity results



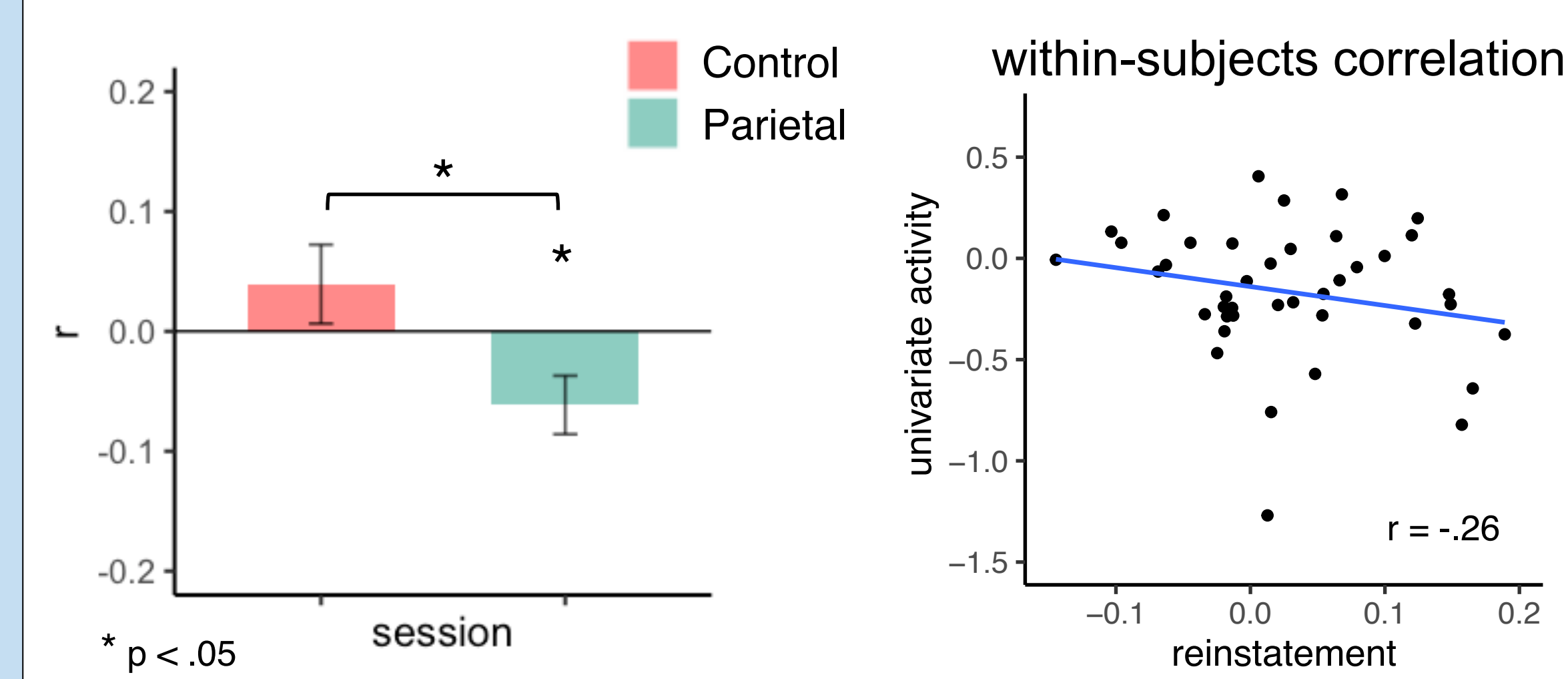
## Univariate Results

parietal > control stimulation



- Parietal stimulation leads to decreased left posterior hippocampal activity during memory encoding (cluster corrected threshold  $p < .005$ )

### Correlation between hippocampal activity and reinstatement



- Stimulation leads to a negative within-subjects correlation between **univariate left posterior hippocampal activity** at encoding and **reinstatement in left medial occipital gyrus**

## Conclusions

- Lateral parietal stimulation alters objective but not subjective memory for naturalistic episodes
  - Accuracy improved on the second question only, suggesting reduced interference
- Memory for lifelike events supported by reinstatement of event-specific patterns of neural activity in posterior midline regions
- Lateral parietal stimulation alters reinstatement of event-specific multivariate activity
- Stimulation decreases posterior hippocampal univariate activity during memory encoding
- Stimulation alters within-subject association between univariate hippocampal activity and medial occipital reinstatement
- Hippocampal-targeted stimulation alters large-scale, event-specific multivariate patterns of neural activity and objective memory for naturalistic episodes

## References

- Wang, J.X., Rogers, L.M., Gross, E.Z., Ryals, A.J., Dokucu, M.E., Brandstatt, K.L., Hermiller, M.S., Voss, J.L. (2014), *Science*
- Nilakantan, A.S., Bridge, D.J., Gagnon, E.P., VanHaerents, S.A., Voss, J.L. (2017), *Curr Biol*
- Hermiller, M.S., VanHaerents, S., Raji, T., Voss, J.L. (2019), *Hippocampus*
- Tambini, A., Nee, D.E., D'Esposito, M. (2018), *J Cogn Neurosci*
- Chen, H.-Y., Gilmore, A.W., Nelson, S.M., McDermott, K.B. (2017), *J Neurosci*
- Hebscher, M., Meltzer, J., Gilboa, A. (2019), *Elife*
- Thakral, P.P., Madore, K.P., & Schacter, D.L. (2017), *J Neurosci*