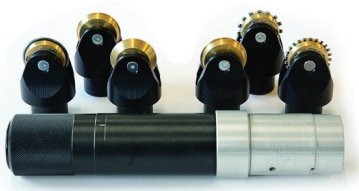


Optima V250

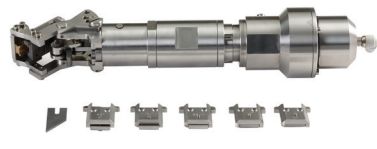
4' x 8' DIGITAL CUTTING

The **Optima V250** 4' x 8' digital flatbed is the optimal cutting solution for all applications in the digital printing, packaging, and signage markets. Contour & die cut substrates up to 3/4" thick including foam board, PVC, and varnishing plates / offset blankets with its dual tool head system and variety of tool options. Each tool head is independently adjustable, ensuring high quality results for every job.

Tools for twin tool station



Creasing Tool with various wheels to crease folding carton and corrugated cardboard.



V Tool (optional) 45° for cutting foamboard, cardboard, reboard, and gatorboard.

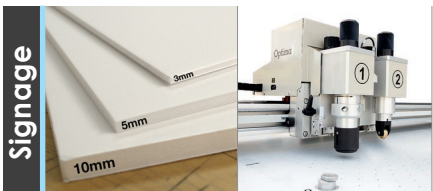


Oscillating Cutting Tool powerful pneumatic vibrating tool for cutting various strengths of materials up to 20 mm (3/4").



Tangential Cutting Tool precise multi depth cutting tool for materials up to 5 mm (0.196") in thickness.

Applications



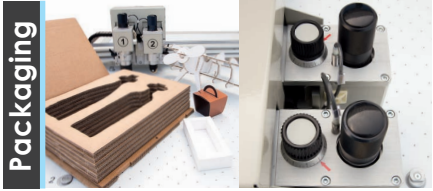
Signage

With **two configurable tool stations**, Graphtec Optima V250 is a medium-format professional cutting plotter capable of: cutting, half-cutting and creasing, drawing and oscillating cutting up to 20 mm (3/4") in thickness.



Digital Print

Optima V250 comes as standard with a **camera for crop mark detection**. This device, used in combination with software **OptiCrop**, can perform accurate contour cutting and creasing around pre-printed media even with print-distorted materials.



Packaging

Independent twin heads can be easily adjusted to various heights depending on the blade length and type. This ensures that you achieve the highest quality and cutting precision for all materials.

Software

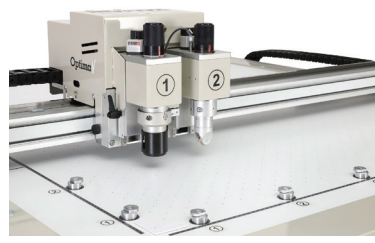
V-Studio (Included Software for the PC with Windows OS) is the Operating Software which allows the artwork preparation, file conversion and the .PLT, .SVG (i.e. Illustrator® and CorelDraw®) vector file importation. Provided to the end users specific applications for different industries, a packaging design application and a crop marks detection camera utility. The tools/material database as well as the working process are managed by dedicated apps, all of them designed to make the work flow faster and guide operators step by step.

optiCrop is the easy to use software, to perform Contour Cut on pre-printed image. The software used in combination with ImageCut provides you with diagram to preview your contour cuts. This preview will even assist you in searching registration marks and export the artwork into your machine correctly. Optima V250 comes as standard with a camera for crop mark detection. This device, used in combination with optional software OptiCrop, can perform accurate contour cutting and creasing around pre-printed media even with print-distorted materials. Supported by included Adobe Illustrator® or CorelDraw® plug-in for Windows OS, along with various RIP manufacturer support including SAI, Caldera, and upcoming ONYX support release.

m3 (optional) is a comprehensive library of parametric components and designs, specially designed for Graphtec Optima V250. It is structured to deliver the capability to edit packaging, display cases and other cardboard based 3D objects, resize & cut.

m3 Art (optional) is a combination of functionalities giving graphic designers the flexibility to work directly in Adobe Illustrator with files from the packaging and POP/POS displays parametric libraries. Native m3 files can be opened in Illustrator without conversion and can be resized.

Loads of Materials

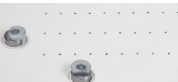




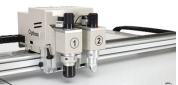
CUT
up to
3/4"
in thickness

Multi-functions
All-In-1
Creasing
Tangential Cutting
Oscillating Cutting
V-Cutting

Features



VACUUM-ASSISTED MACHINE powerful vacuum function perfectly secures the media to the working table.



INTERCHANGEABLE HEADS SYSTEM crease and score (variable thicknesses), emboss, draw, and perform oscillating cutting, half-cutting and V-cutting.



BUTTON CLAMP SYSTEM allows you to trim the material right to the edges, optimizing the material yield and leaves no more marks on your material.

TIP

For more product information, tutorials, video training, software, FAQ, download, technical support, warranty, dealer & service locations

please visit www.graphtecamerica.com



Like / Follow Graphtec America, Inc on Facebook, Twitter, and subscribe to our Youtube Channels to stay current on latest news, video training, and updates!

Specifications / Accessories

| | | | |
|-------------------------------|--|--|--|
| Dimensions | W 72 x D 118.5 x 47.2 in | Cutting Capacity | 3/4" with oscillating tool head |
| Weight | Machine net weight 1,323 lbs (600kg) | Cutting Area | 4' x 8' (1225 x 2520 mm) |
| | Machine with package 1,802 lbs (820kg) | Locking System | Air suction and pneumatic clamp |
| Max. Speed | 33"/sec | Crop Mark Detection | Via high resolution camera |
| Acceleration | 39"/S ² | Standard Accessories (what's in the box) | <ul style="list-style-type: none"> ▪ Creasing tool ▪ Tangential cutting tool ▪ Oscillating cutting tool ▪ 3-sets of 3-oscillating blades ▪ Box of 100 tangential blades ▪ Variety of cutting mats ▪ V-Studio software with OptiCrop Optical Crop Reading System |
| Power Requirements | Single phase 208V/60Hz/16A | | |
| Air Requirements (Pneumatics) | 8 Bar*/115 PSI-5.3CFM or 150 l/min | | |
| Connectivity | USB 2.0 | | |
| Data Buffer | External PC | | |
| File Formats | SVG, PLT, DXF and CF2 | | |
| No. Tools | Dual head configuration | | |