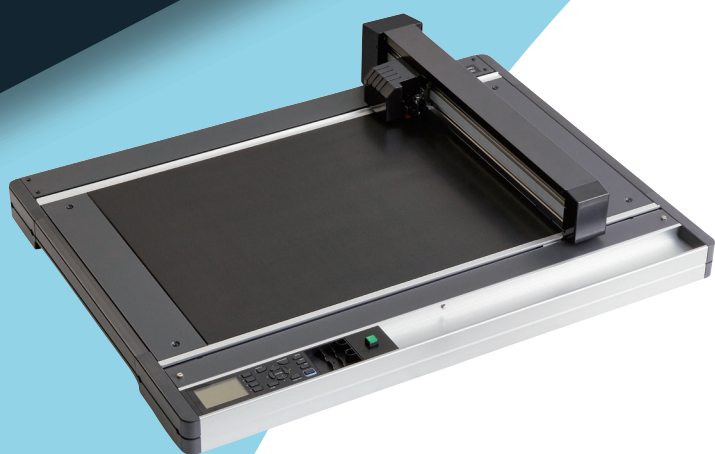


GRAPHTEC

Since 1946

PRECISION CUTTING SOLUTIONS

FLATBED CUTTERS



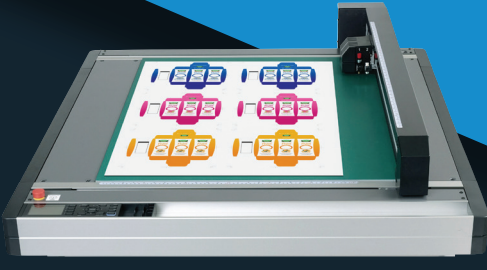
FCX4000 SERIES



FCX2000 SERIES



OPTIMA V250



GRAPHTEC FCX2000 SERIES

IN-HOUSE PROTOTYPING SPECIALIZED PRODUCTION

The **Graphtec FCX2000** is a versatile, high-power flatbed for in-house package prototyping and specialized production. Finish jobs faster without switching tools with the dual tool holder for Graphtec blades, creasers, and pens. Unique to the FCX2000 is an adjustable tool head which allows extra room for thick substrates, and a roll media stocker for efficient processing of roll media.

Vacuum Media Hold-down



The FCX2000 utilizes vacuum suction generated by an external vacuum pump to hold media securely in place during processing. This method is best suited for heavy / thick materials.

The improved cutting table features reduced vacuum hole spacing that provides stronger, more consistent hold.

ARMS 6.0

Graphtec's renowned **Advanced Registration Mark Sensing** system swiftly reads registration marks printed from any printer to accurately contour cut and crease down to the smallest details. ARMS automatically compensates for media skew, print shrinking, and determines the optimal cutting order of objects. The sophisticated LED sensor also reads marks printed on challenging materials such as high-gloss, laminates, glitter, metallic, and high intensity reflective.

Reverse-Side Processing

Cut and crease on the opposite side of media to protect graphics.

Curved Crease Lines

Add a new dimension to your packaging with curved crease lines with the optional PM-CT-002 tool.

Expanded Print & Cut

Print & Cut material outside of registration marks for up to 30% higher yield.

	FCX2000-60VC	FCX2000-120VC	FCX2000-180VC
Effective Cutting Area	24" x 36"	47.2" x 36"	70.8" x 36"
Unit Dimensions (includes stand)	W 52.9 x D 55.4 x H 36.6 in	W 76.1 x D 55.4 x H 36.6 in	W 99.7 x D 55.4 x H 36.6 in

Specifications

For more information and tutorials visit www.graphtecamerica.com

Max. Cutting Speed	16 in/s (1 to 40 cm/s in 16 steps), in all directions	Compatible Standard	Safety: UL60950-1/cUL, CE marking (low-voltage and EMC) EMC: FCC-A, EN55032-A
Cutting Force	Tool 1: Max. 500 gf Tool 2: Max. 1000 gf Tool 1 & 2 Settings: in 40 steps	Min. Character Size	Approx. 10 mm square (varies by font & media types)
Media Hold Down Method	Vacuum suction	Roll Media Support (Width, Weight)	Manual feeding, up to 3'1.4" width, up to 11 lbs
Interface	USB2.0 / Ethernet / RS-232C	COMPATIBLE MEDIA	
Distance Accuracy	Max. 0.1% of the distance moved or 0.1 mm, whichever is larger (in plotting mode)* * When operated with Graphtec specified media and conditions.	Self-adhesive marking film (vinyl, fluorescent, reflective) Heavy paper/board (pattern paper, oil board) Compressed foam sheet Sandblast resist rubber Microflute board (F/G grades) Magnet Cardboard (E-Flute) Clear sheet for plastic boxes High-intensity reflective film	
Power Source	100 to 240 V AC, 50/60 Hz (auto switching), Max. Consumption 140 VA	APPLICATIONS	
Control Panel	3.7" Graphical LCD	<ul style="list-style-type: none"> Packaging mock-ups Traffic & commercial Signage POP displays Garment & shoe patterns Decals & labels 	<ul style="list-style-type: none"> Monument stencil High-function film protectors Industrial / electronic components Coating plates & offset blankets
Software	<ul style="list-style-type: none"> Cutting Master 4 Plugin (Win/Mac) Graphtec Pro Studio (Win) Graphtec Studio (Mac) 		
Compatible OS	Win 10/8.1/8/7, Mac 10.7-10.13.1		
Warranty	2-Yr parts & labor warranty		
Stand	Included with all models		



GRAPHTEC FCX4000 SERIES

CUT-ON-DEMAND LOW-TO-MEDIUM PRODUCTION

The **Graphtec FCX4000** is a high-speed, compact solution for low-to-medium size print-on-demand production. Offered as a tabletop cutter with optional stand, the FCX4000 easily fits within the constraints of most workspaces. Finish jobs faster without switching tools with the dual tool holder for Graphtec blades, creasers, and pens.

Electrostatic Media Hold-Down



The FCX4000 utilizes electrostatic generated by electrodes inside the panel to hold down media. This method is best suited for lightweight materials, however thicker materials may also be used.

ARMS 6.0

Graphtec's renowned **Advanced Registration Mark Sensing** system swiftly reads registration marks printed from any printer to accurately contour cut and crease down to the smallest details. ARMS automatically compensates for media skew, print shrinking, and determines the optimal cutting order of objects. The sophisticated LED sensor also reads marks printed on challenging materials such as high-gloss, laminates, glitter, metallic, and high intensity reflective.

USB Operation

Send jobs at the push of a button, without a PC or internet connection.

Barcode Generation

Generate barcodes to automatically load files and cutting conditions for specific projects.

ARMS Copy

Reads only 1 registration mark of subsequent copies of the same job, greatly increasing production speed.

	FCX4000-50ES	FCX4000-60ES
Effective Cutting Area	25.98" x 19.21"	38.42" x 25.98"
Unit Dimensions (includes stand)	W 42.87 x D 35.31 x H 8.03 in	W 55.31 x D 42.08 x H 8.03 in

Specifications

For more information and tutorials visit www.graphtecamerica.com

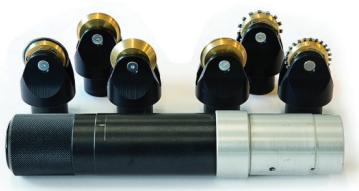
Max. Cutting Speed	29.5" / sec (1 to 75cm/s in 23 steps)	Compatible Standard	Safety: UL60950-1/cUL, CE marking (low-voltage and EMC) EMC: FCC-A, EN55032-A, CE mark (EN85032, others)
Cutting Force	Tool 1: Max. 600 gf Tool 2: Max. 600 gf Tool 1 & 2 settings: in 48 steps		
Media Hold Down Method	Electrostatic	COMPATIBLE MEDIA	
Interface	USB2.0 / Ethernet / RS-232C	Self-adhesive marking film (vinyl, fluorescent, reflective)	
Distance Accuracy	Max. 0.2% of the distance moved or 0.1 mm, whichever is larger (in plotting mode)*	Stiff paper/card (for stencils, etc)	
Power Source	100 to 240 V AC, 50/60 Hz (auto switching), Max. Consumption 140 VA	Polystyrene foam	
Control Panel	3.7" Graphical LCD	Magnet	
Software	<ul style="list-style-type: none"> Cutting Master 4 Plugin (Win/Mac) Graphtec Pro Studio (Win) Graphtec Studio (Mac) 	Sandblast rubber sheets	
Compatible OS	Win 10/8.1/8/7, Mac 10.7-10.13.1	Micro flute board (F/G grades)	
Warranty	2-Yr parts & labor warranty	Clear sheets for plastic boxes	
Stand	Optional (available for purchase)	High-intensity reflective film	
		for materials that can not be held down by electrostatic, it is required to use the optional cling mat or adhesive sheet.	
		APPLICATIONS	
		<ul style="list-style-type: none"> Decals & Labels Packaging mock-ups POP Displays 	<ul style="list-style-type: none"> Traffic & commercial signage High-function film protectors Monument stencil

Optima V250

4' x 8' DIGITAL CUTTING

The **Optima V250** 4' x 8' digital flatbed is the optimal cutting solution for all applications in the digital printing, packaging, and signage markets. Contour & die cut substrates up to 3/4" thick including foam board, PVC, and varnishing plates / offset blankets with its dual tool head system and variety of tool options. Each tool head is independently adjustable, ensuring high quality results for every job.

Tools for twin tool station



Creasing Tool with various wheels to crease folding carton and corrugated cardboard.



V Tool (optional) 45° for cutting foamboard, cardboard, reboard, and gatorboard.



Oscillating Cutting Tool powerful pneumatic vibrating tool for cutting various strengths of materials up to 20 mm (3/4").



Tangential Cutting Tool precise multi depth cutting tool for materials up to 5 mm (0.196") in thickness.

Applications



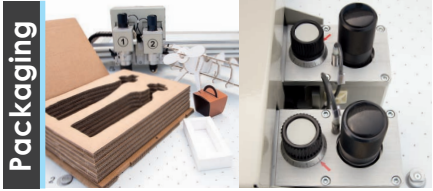
Signage

With **two configurable tool stations**, Graphtec Optima V250 is a medium-format professional cutting plotter capable of: cutting, half-cutting and creasing, drawing and oscillating cutting up to 20 mm (3/4") in thickness.



Digital Print

Optima V250 comes as standard with a **camera for crop mark detection**. This device, used in combination with software **OptiCrop**, can perform accurate contour cutting and creasing around pre-printed media even with print-distorted materials.



Packaging

Independent twin heads can be easily adjusted to various heights depending on the blade length and type. This ensures that you achieve the highest quality and cutting precision for all materials.

Software

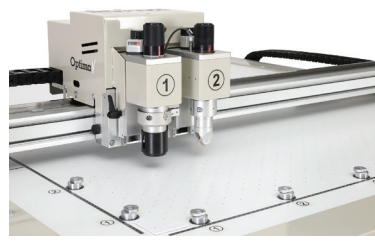
V-Studio (Included Software for the PC with Windows OS) is the Operating Software which allows the artwork preparation, file conversion and the .PLT, .SVG (i.e. Illustrator® and CorelDraw®) vector file importation. Provided to the end users specific applications for different industries, a packaging design application and a crop marks detection camera utility. The tools/material database as well as the working process are managed by dedicated apps, all of them designed to make the work flow faster and guide operators step by step.

optiCrop is the easy to use software, to perform Contour Cut on pre-printed image. The software used in combination with ImageCut provides you with diagram to preview your contour cuts. This preview will even assist you in searching registration marks and export the artwork into your machine correctly. Optima V250 comes as standard with a camera for crop mark detection. This device, used in combination with optional software OptiCrop, can perform accurate contour cutting and creasing around pre-printed media even with print-distorted materials. Supported by included Adobe Illustrator® or CorelDraw® plug-in for Windows OS, along with various RIP manufacturer support including SAI, Caldera, and upcoming ONYX support release.

m3 (optional) is a comprehensive library of parametric components and designs, specially designed for Graphtec Optima V250. It is structured to deliver the capability to edit packaging, display cases and other cardboard based 3D objects, resize & cut.

m3 Art (optional) is a combination of functionalities giving graphic designers the flexibility to work directly in Adobe Illustrator with files from the packaging and POP/POS displays parametric libraries. Native m3 files can be opened in Illustrator without conversion and can be resized.

Loads of Materials





CUT
up to
3/4"
in thickness

Multi-functions
All-In-1
Creasing
Tangential Cutting
Oscillating Cutting
V-Cutting

Features



VACUUM-ASSISTED MACHINE powerful vacuum function perfectly secures the media to the working table.



INTERCHANGEABLE HEADS SYSTEM crease and score (variable thicknesses), emboss, draw, and perform oscillating cutting, half-cutting and V-cutting.



BUTTON CLAMP SYSTEM allows you to trim the material right to the edges, optimizing the material yield and leaves no more marks on your material.

TIP

For more product information, tutorials, video training, software, FAQ, download, technical support, warranty, dealer & service locations

please visit www.graphtecamerica.com



Like / Follow Graphtec America, Inc on Facebook, Twitter, and subscribe to our Youtube Channels to stay current on latest news, video training, and updates!

Specifications / Accessories

Dimensions	W 72 x D 118.5 x 47.2 in	Cutting Capacity	3/4" with oscillating tool head
Weight	Machine net weight 1,323 lbs (600kg)	Cutting Area	4' x 8' (1225 x 2520 mm)
	Machine with package 1,802 lbs (820kg)	Locking System	Air suction and pneumatic clamp
Max. Speed	33"/sec	Crop Mark Detection	Via high resolution camera
Acceleration	39"/S ²	Standard Accessories (what's in the box)	<ul style="list-style-type: none"> ▪ Creasing tool ▪ Tangential cutting tool ▪ Oscillating cutting tool ▪ 3-sets of 3-oscillating blades ▪ Box of 100 tangential blades ▪ Variety of cutting mats ▪ V-Studio software with OptiCrop Optical Crop Reading System
Power Requirements	Single phase 208V/60Hz/16A		
Air Requirements (Pneumatics)	8 Bar*/115 PSI-5.3CFM or 150 l/min		
Connectivity	USB 2.0		
Data Buffer	External PC		
File Formats	SVG, PLT, DXF and CF2		
No. Tools	Dual head configuration		

Software

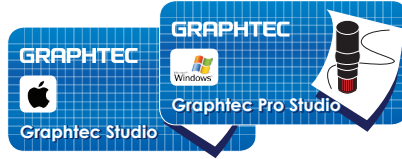
For software information and tutorials visit www.graphtecamerica.com



Cutting Master 4 (Included)

Cutting Master 4, the latest **plug-in software** for Adobe Illustrator and CorelDRAW Graphics Suite. Send cutting data to the plotter, view cut preview, add registration marks, edit tool conditions/job settings, and more. This easy to use plug-in enables you to get the best performance from your plotter.

Compatible: Win 10/8.1/8/7 Mac 10.7-10.14
Supported Software: Adobe Illustrator CC14-CC19, CC, CS5-CS6, CS4(Win only) | CorelDRAW 2017-2019, X4-X8



Graphtec Pro Studio / Graphtec Studio (Included)

Easy-to-use application software for creating and cutting original designs. Includes enhanced functions such as auto-shapes, shading, and editing functions. It can also configure the cutting conditions and other settings on the plotter. EPS / Ai* / CMX* / PDF* file compatibility allows users to import pre-existing designs.

* Available in Graphtec Pro studio.

Compatible: Win 10/8.1/8/7
 Graphtec Studio for Mac 10.5-10.14



Graphtec Pro Studio Plus

This optional software possess advanced functions for optimal productivity and advanced designing. **Functions include:** transformation of characters & graphics, bar code creation, nesting, deformation, shadow, and stripe of texts & shapes, spell check, vectoring, filter for bitmap image, and many more.

Compatible: Win 10/8.1/8/7

Standard Accessories

For genuine Graphtec accessories, find a dealer near you by visiting www.graphtecamerica.com

FCX4000 SERIES

Standard Accessories (included)
Printed docs: quick guide, safety & cutting blade manual
Blade: CB15U-1 (1 pc/pack)
Blade-holder: PHP35-CB15-HS
Loupe: PM-CT-001, for checking blade length
Fiber-tip pen: KF700-BK (Black) & PHP31-FIBER (pen-holder)
 Power cable, USB cable 2.9 m
Protection sheet*: PM-CR-002 for FCX4000-50ES, PM-CR-003 for FCX4000-60EA Transparent vinyl, thickness 0.3 mm

* Protection sheet prevents damage to the writing panel of the FCX4000 when cutting without a backing sheet. Electrostatic absorption can be used even if a protect sheet is installed to the plotter.

Optional

Blade	CB09UB-5, CB15U-5, CB15U-K30-5, CB15UA-5, CB15UA-K30-5
Blade-Holder	PHP33-CB09N-HS, PHP33-CB15N-HS, PHP35-CB09-HS, PHP35-CB15-HS
Fiber-Tip Pen	KF700-BK (black), KF700-RD (red), KF700-BL (blue)
Pen Holder	PHP31-FIBER, for KF700 series
Creasing Tool	CP-001: stick style, 1 mm tip PM-CT-002: ball on tip of stick style, 1.5 mm dia
Loupe	PM-CT-001 for checking the length of the extruded blade tip
Cling Mat	PM-CM-001 (TBA) for film based type material, size 26" x 19" PM-CM-002 (TBA) for paper based type material, size 26" x 19"
Adhesive Sheet	CM-0003-R1A, adhesive sheet (double-sided adhesive coated sheet), size 21.4" x 65' 7.4" (supplying in roll)
Protect Sheet	PM-CR-002 for FCX4000-50ES transparent vinyl, thickness 0.3 mm PM-CR-003 for FCX4000-60ES transparent vinyl, thickness 0.3 mm

- Brand names and product names listed in this brochure are the trademarks or registered trademarks of their respective owners.
- Items mentioned are subject to change without notice. For more information about product, please check the website or contact your local representative.



FOR SAFE OPERATION OF EQUIPMENT

- Before use, please read the user manual and operate properly in accordance with the description.
- To avoid malfunction or an electric shock by current leakage or voltage, please ensure a ground connection and use according to the specification.

FCX2000 SERIES

Standard Accessories (included)
Printed docs: quick guide, safety manual
Blade: CB15U (2 blades), CB15U-K30 (5 blades)
Blade-holder: PHP35-CB15-HS
Loupe: PM-CT-001, for checking blade length
Fiber-tip pen: KF700-BK (Black) & PHP31-FIBER (pen-holder)
Durable flexible hose: for VC models only, 1.5-5 m
Hose band: 2pcs, for VC models only, to fix the hose

Others: power cable, height adjustment tool, USB cable, roll media stock, stand

Optional

Blade	CB09UB, CB09UB-K60, CB15U, CB15UA, CB15U-K30, CB15UA-K30, CB30UC-1, PM-CB-001
Blade-Holder	PHP31-FIBER, PHP33-CB09N-HS, PHP33-CB15N-HS, PHP34-BALL, PHP34-CB30-HS, PHP35-CB09-HS, PHP35-CB15-HS, PHP35-CB15N-HS, PHP71-SHARPIE
Fiber-Tip Pen	KF700-BK (black), KF700-RD (red), KF700-BL (blue)
Pen Holder	PHP31-FIBER, for KF700 series
Creasing Tool	CP-001: stick style for heavy paper CP-002: roller type for heavy paper CP-003: roller type for cardboard PM-CT-002: ball on tip of stick style for curve on heavy paper
Ballpoint Pen	KB700-BK, oil-based ballpoint pen (black)
Pen-Holder	PHP34-ball, for KF700-BK pen
Cling Mat	PM-CM-004 (TBA) for film based type material, size 26" x 19" PM-CM-005 (TBA) for paper based type material, size 26" x 19"
Adhesive Sheet	CM-0003-R1A, adhesive sheet (double-sided adhesive coated sheet), size 21.4" x 65' 7.4" (supplying in roll)

GRAPHTEC
 Graphtec America, Inc.

17462 Armstrong Ave. Irvine, CA 92614

TIP

Graphtec offers Extended Warranty for up to 5 years on specific models

Upgrade within 90 days of your purchase date at:
www.graphtecamerica.com



Tech Support / Service Centers

Get help on parts and services, please find Graphtec Authorized Service Centers near you at:
www.graphtecamerica.com

www.graphtecamerica.com 949.770.6010 Toll-free 800.854.8385