

Signature Measuring Devices

What gets measured, gets done!

The Newman Tension Meter is the only meter in the world with all stainless steel hardened gears, shock proof industrial grade internal gear movement, giving you a screen tension meter of exceptional quality with consistent readings every time. Heavy-duty protective aluminum housing.



1E Regularly \$500
2E Regularly \$400



Regularly \$69

The Light Loupe is a 10-x magnifying tool with a large illuminated field. The Light Loupe is perfect for checking film positives, screen stencils, and finished prints on any substrate for registration, resolution and detail.



Regularly \$799

\$599

Mini Hygro-Thermometer Monitor is a Compact Meter for monitoring temperature and humidity. It's internal memory stores minimum and maximum readings. It simultaneously measures and displays temperature and humidity. Features low battery indicator, built-in tilt stand for easy viewing.



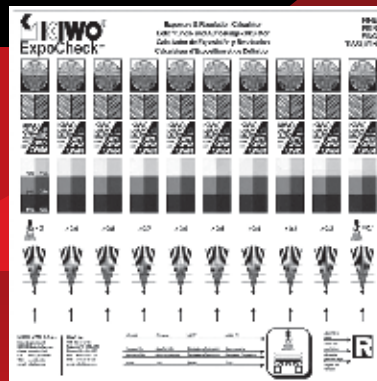
Regularly \$49

USB Camera Microscope
Lightweight with optical 10x to 40x digital zoom and 2.8" full color LCD screen for preview. Built in memory, USB cable and power adapter. Perfect for color and screen analysis.

Exposure Calculator Digital & Analog Combo

The KIWO ExpoCheck exposure test film uses 9 neutral density filters + 1 clear area. These areas vary in density (or degree of darkness). Digital CTS version provided

\$99



"If you control the screen, then and only then can you begin to control the process!"

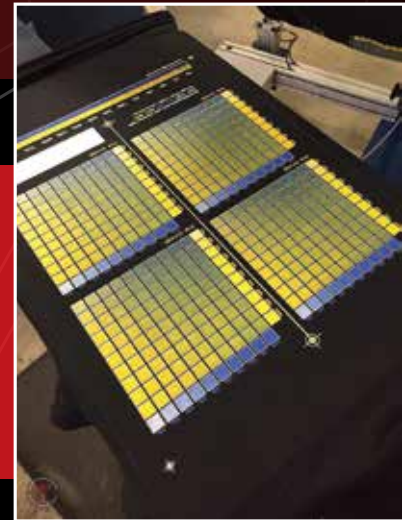
- Lon Winters
Founder &
Managing Director
at Graphic Elephants



\$599

The Delta Scope is an economically priced stencil thickness gauge. With it's integrated probe, taking EOM (emulsion-over-mesh) measurements have never been easier. It comes complete with case, calibration shims, base plate and instruction manual. Features: Fast, repeatable measurements, Strong, wear resistant, ruby-tipped probe, Audible and visible measurement indication Mills/Microns switchable.

Regularly \$699



Half-tone Test File Digital

\$99

Regularly \$199

Why did we do it? Consistent reproduction of colors using variable halftone percentage color builds, simulate true color consistency for sim process as it pertains to mixing and overprinting two different colors on press. It breaks down the tones and cross references in 10% increments from 100 - 10 and displays the variations utilizing wet on wet.

Half-tone Test File Film

\$199

Regularly \$299



\$699

Regularly \$799

The Moisture Meter - determines when the stencil is dry enough to expose. This meter detects hidden moisture instantly. It is a fast and accurate measurement that prevents you from having to take chances with your stencil. The battery-operated contact meter provides direct readings of the residual moisture content in coated (and dried) screens to ultimately prevent premature stencil breakdown. A screen that is not dried thoroughly before exposure will not harden effectively, and is vulnerable to deficiencies. Simply hold it against the emulsion or film surface and press the "Read" button for 2 seconds. Red for trouble ahead. Orange for risky. Green for go!

Dryer Heat Probe - This temperature probe is the most accurate method of checking your electric or gas conveyor dryer. Plot your dryer for the most effective and consistent cure temperature.



\$399

Regularly \$499



\$99

Regularly \$129

Infrared Thermometer Heat Gun - This measures surface temperatures. LCD with back lighting indicates temperature instantly, 1-button operation with built-in laser pointer, accurate to 6 ft. Operates on one 9V battery.

L.O.C. Gauge - A critical maintenance requirement is proper calibration of the press. Regardless of the number of pallets or heads a press has, it is crucial that these pallets, heads and squeegees are all at the same height, in the same plane and are parallel to each other. This is known as the planar relationships. This becomes increasingly important as print sophistication increases. The space between the pallet and screen is called the off contact distance. This too must be equal and in parallel planes. To facilitate this the LOC (Level Off Contact) Gauge will minimize an otherwise lengthy process.



\$2,999

Regularly \$3499



GraphicElephants.com

info@graphic elephants.com

Elizabeth, Colorado

Family Owned - Colorado Company

