

# Change your Oracle EBS Chart of Accounts

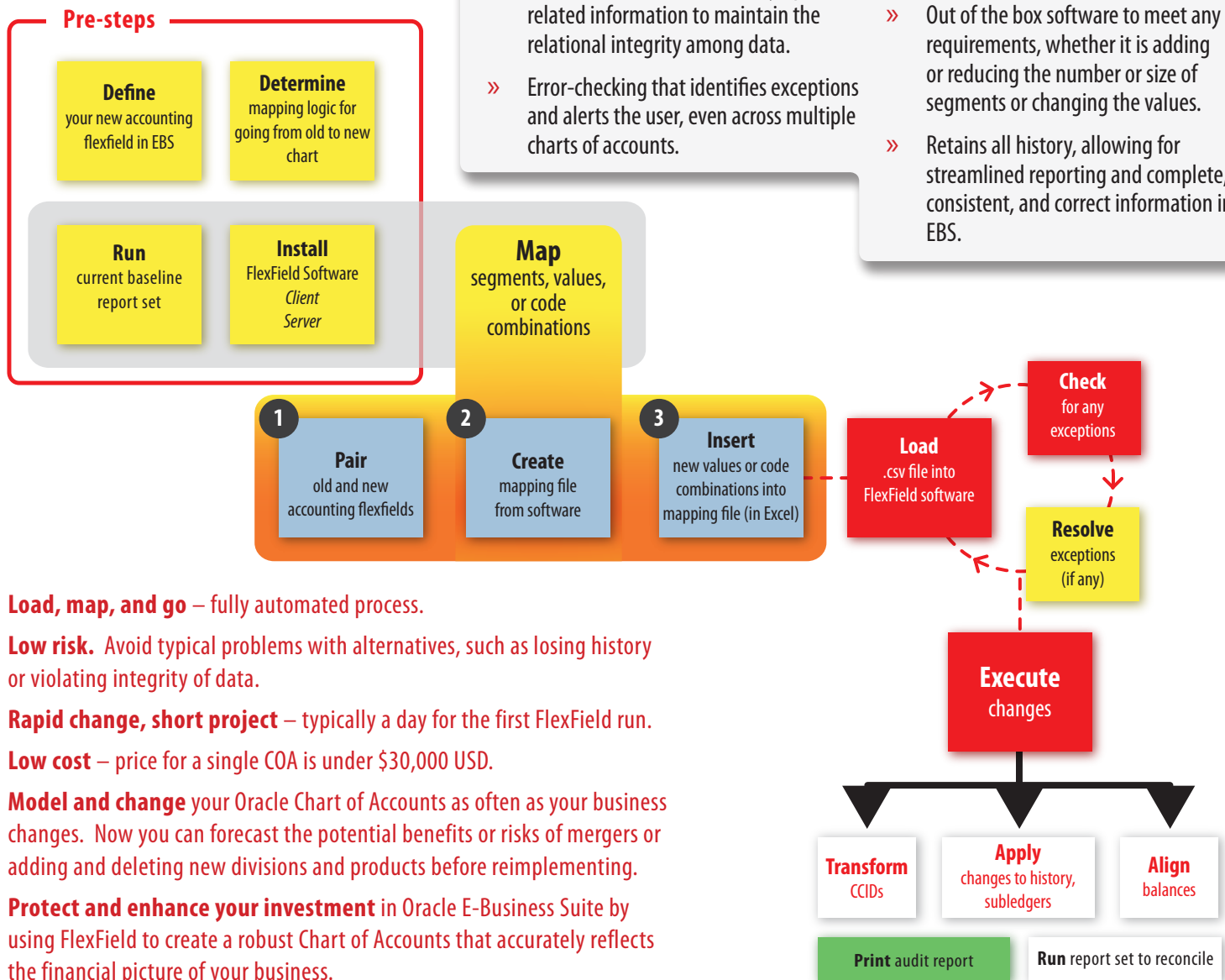
*...without Reimplementing.*

FlexField software allows companies to change and model their Chart of Accounts in Oracle E-Business Suite (EBS) as often as they change their business. Its built-in knowledge base of Oracle E-Business Suite provides a low-risk, low-cost way to make rapid changes to the accounting flexfield. Businesses can change their Chart of Accounts and bring in all transaction history over a weekend while maintaining relational integrity. Users also can model potential business initiatives in order to gauge the financial impact ahead of time.

## Why is FlexField the industry-leading solution for changing the accounting flexfield?

- » Designed for the business user.
- » Built-in features automatically update related information to maintain the relational integrity among data.
- » Error-checking that identifies exceptions and alerts the user, even across multiple charts of accounts.
- » Simple graphical user interface that takes you through the FlexField process.
- » Out of the box software to meet any requirements, whether it is adding or reducing the number or size of segments or changing the values.
- » Retains all history, allowing for streamlined reporting and complete, consistent, and correct information in EBS.

## FlexField Change Process



**Load, map, and go** – fully automated process.

**Low risk.** Avoid typical problems with alternatives, such as losing history or violating integrity of data.

**Rapid change, short project** – typically a day for the first FlexField run.

**Low cost** – price for a single COA is under \$30,000 USD.

**Model and change** your Oracle Chart of Accounts as often as your business changes. Now you can forecast the potential benefits or risks of mergers or adding and deleting new divisions and products before reimplementing.

**Protect and enhance your investment** in Oracle E-Business Suite by using FlexField to create a robust Chart of Accounts that accurately reflects the financial picture of your business.

## The Case for Changing your E-Business Suite Chart of Accounts using FlexField

### Significantly improve your financial and managerial reporting

The effects of rapid and ongoing business changes can result in outgrowing your EBS chart of accounts. Your business looks very different than it did when you originally implemented your COA. Now, there is a gap between your chart of accounts and how you need to track your business. The short-term solution for most companies is multiple “fix” spreadsheets to bridge the gaps and create usable financial and managerial information. The costs in time and effort to prepare, check, maintain, and update these “fix” spreadsheets is high and these costs compound period after period.

*With FlexField you can easily change your chart of accounts to match your business structure streamlining your financial and managerial reporting processes to save time and effort and reduce costly errors.*

### Meet Regulatory and Exchange Mandated Requirements

IFRS, SOX, new tax legislation, and other regulatory changes have resulted in chart of accounts shortcomings for many companies. Required changes in reporting categories and classifications that are not accommodated in the existing chart of accounts structure can result in significant record-keeping workarounds. Residing in spreadsheets, paper files, and ancillary databases, this re-categorized information has to be reconciled and checked to EBS transaction records. Multiple entries of the same data, error checking, and ongoing revisions result in continual costs in time and effort, a lack of controls, and no transparency for drill-downs and rollups.

*Using FlexField you can easily modify your chart of accounts to meet regulatory and exchange mandated requirements and eliminate many ongoing costs.*

### Implement a Global Chart of Accounts to Take Advantage of Secondary Ledgers, Ledger Sets, and Other R12 Functionality

EBS Release 12 introduces powerful new features to enhance efficiency and effectiveness of your transactional, informational, and reporting processes. Among the most powerful enhancements are ledger sets and secondary ledgers. Use of ledger sets can dramatically improve processing efficiencies by enabling opening and closing periods and reporting across multiple ledgers simultaneously. (Sets of books become ledgers in Release 12). However, the ledger set functionality will only work among ledgers that have identical charts of accounts.

In order to use Oracle’s Advanced Global Intercompany System (AGIS), you must have a single chart of accounts that includes an intercompany segment. Global companies that want to take advantage of secondary ledgers in R12 will want to create a primary ledger with a global COA and then define create accounting rules to record transactions in other currencies and or to use different accounting methods. Having a single chart of accounts reduces complexity, streamlines the create accounting rules, and enables efficient use of subledger accounting features. Effectively using secondary ledgers increases transparency and compliance with statutory and regulatory requirements like IFRS.

*FlexField software can easily transform your multiple charts of accounts into a global chart of accounts unlocking the full functionality of Release 12’s most powerful efficiency-enhancing new features.*

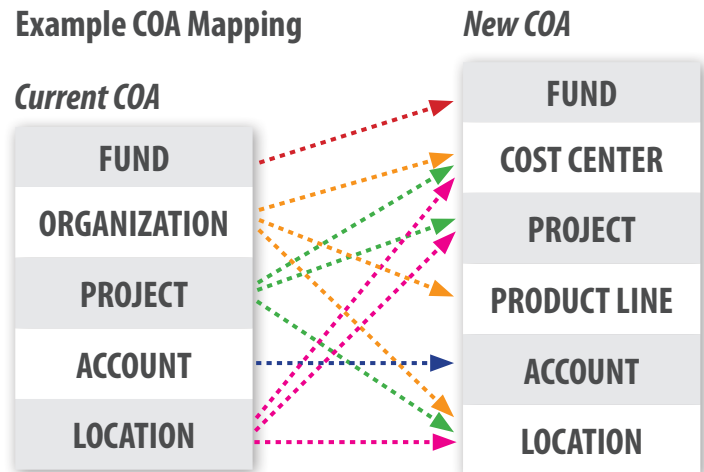
#### Example COA Mapping

##### Current COA

FUND
ORGANIZATION
PROJECT
ACCOUNT
LOCATION

##### New COA

FUND
COST CENTER
PROJECT
PRODUCT LINE
ACCOUNT
LOCATION



### Stream-line transaction processing, reduce errors, and decrease user support costs

The mantra for all efficient and effective organizations is do more with less—for the world-class organizations, the expectation is to do more with less and do it better. Having an effective and efficient record-keeping and transaction processing system is key to organizational performance. A legacy chart of accounts or different charts of accounts within your EBS instance can lead to significant slower transactional processing due to different recording schemas for similar transactions. When companies had the luxury of dedicated accountants for each legal entity, this was manageable. But streamlined operations mean centralized accounting where a single accounting group may be processing transactions for several legal entities. Oracle has recognized the need to post transactions efficiently in multiple organizations by introducing multi-org processing. But if there are different chart of accounts for each of the legal entities, costly errors can occur due to confusion. At a minimum, the effort to record transactions is hampered as accountants have to refer to “cross-walk” documents created to outline how similar transactions need to be processed differently due to chart of accounts differences.

For companies providing centralized support for their accounting and EBS users staff, support personnel have to be trained to explain how to process a similar transaction many different ways to accommodate multiple charts of accounts.

*FlexField software can allow you to create a global chart of accounts for all legal entities standardizing data and transaction processing, take full advantage of R12 multi-org capabilities, and reduced support costs.*

# What are people saying about FlexField software?

*"You have created an amazing product and I will be promoting it wherever and whenever I can."*

**Independent Consultant  
Real Estate Services Provider**



<b>EBS Version</b>	<b>11i</b>
<b>Applications</b>	<b>Financials</b>
<b># COAs Changed</b>	<b>1</b>
<b>Years in Production</b>	<b>8</b>

<b>EBS Version</b>	<b>11i</b>
<b>Applications</b>	<b>Financials, HR</b>
<b># COAs Changed</b>	<b>1</b>
<b>Years in Production</b>	<b>10</b>



*"The software works perfectly and the support is unsurpassed."*

**Business Analyst  
U.S. Local Government**

*"eprentise software is fundamental to our transformational efforts. Without it we probably could not align back office Finance processes the way we want without much larger costs, and we would have to do more DW/BI development for Management Reporting to make the data common. Instead the data will be common already coming into the warehouse."*

**Director IT Solutions  
Medical Devices Manufacturer**

<b>EBS Version</b>	<b>R12</b>
<b>Applications</b>	<b>Service, Financials</b>
<b># COAs Changed</b>	<b>1</b>
<b>Years in Production</b>	<b>6</b>



<b>EBS Version</b>	<b>11.5.10</b>
<b>Applications</b>	<b>GL, AR, AP, FA, Trade Management, Sales Online, OM, Configurator, Purchasing, Contracts, iProcurement</b>
<b># COAs Changed</b>	<b>1</b>
<b>Years in Production</b>	<b>6</b>



*"Thank you for the wonderful experience we had with eprentise – from the customer service, technical support, and product capabilities. All very positive results. The product proved to be dependable from the first test. Service and Technical Support were superb!*

*Thank you for the excellent support."*

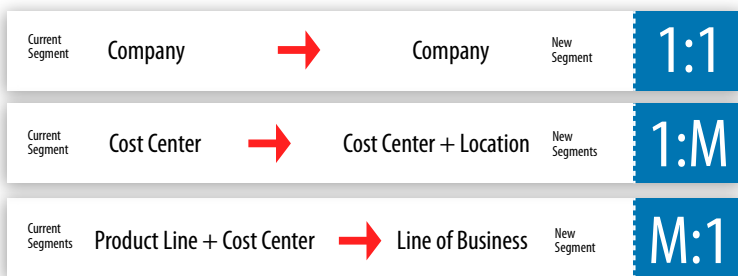
**Senior Manager, Business & Technology Solutions  
Media and Marketing Services Organization**

# FlexField Technical Specifications and User Interface

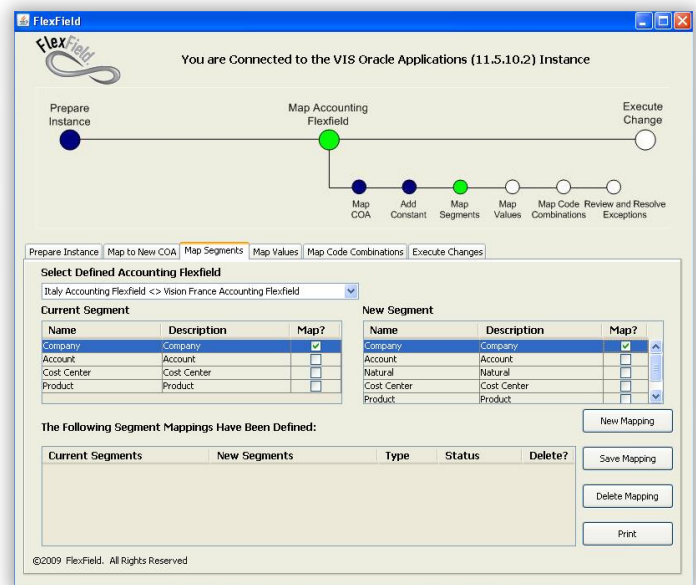
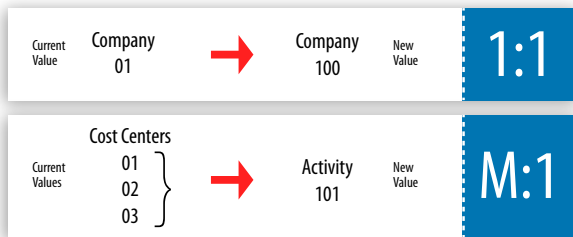
COA Attribute	Function	Available Mappings*	Automated by FlexField®
Segments	Add a segment	1:1 — one-to-one 1:M — one-to-many M:1 — many-to-one	✓
	Remove a segment		✓
	Change segment length		✓
	Change segment values		✓
Code Combinations	Replace code combinations	1:1 — one-to-one M:1 — many-to-one	✓

\*Map in different ways: map individually, map values from a flat file, or choose rules to map your values.

## Segment-level mapping



## Value-level mapping



eprentise provides software that allows Oracle® E-Business Suite users to consolidate multiple production instances, to change existing configurations like charts of accounts and calendars, and to merge, split, or move sets of books, operating units, legal entities, business groups, and inventory organizations. Our software allows growing companies to make their E-Business Suite systems agile enough to support changing business requirements, avoid a reimplementation, and lower the total cost of ownership of ERP while also enabling real-time access to complete, consistent, and correct data across the enterprise.

About the Gartner Cool Vendor Selection Process:

Gartner is a registered trademark of Gartner, Inc. or its affiliates. The Gartner listing does not constitute an exhaustive list of vendors in any given technology area, but rather is designed to identify interesting, new and innovative vendors, products and services. Gartner disclaims all warranties, expressed or implied, with respect to this research, including any warranties of merchantability or fitness for a particular purpose.

Each year, Gartner identifies a Cool Vendor as a company that offers technologies or solutions that are: innovative—enabling users to do things they couldn't do before; impactful—have, or will have, business impact (not just technology for the sake of technology); and intriguing—have caught our interest or curiosity in approximately the past six months.

Cool Vendors in MDM, 2011 by Andrew White, John Radcliffe, Ted Friedman, 21 April 2011

© Copyright 2016 eprentise, LLC. All rights reserved.

**eprentise**

6052 Turkey Lake Road, Suite 202

Orlando, Florida 32819

407.591.4950



Oracle and Java are registered trademarks of Oracle and/or its affiliates.

WWW.EPRENTISE.COM + 888.943.5363