

# Fission 3.0

2019 PDAC TORONTO  
March 3-6, 2019



[WWW.FISSION3CORP.COM](http://WWW.FISSION3CORP.COM) | TSX-V: FUU

## Disclaimer

The following information may contain forward-looking statements. Forward-looking statements address future events and conditions and therefore involve inherent risks and uncertainties. Actual results may differ materially from those currently anticipated in such statements.

Any historical resource estimates were completed prior to the implementation of NI 43-101 and the Company has not done the work necessary to verify the classification of the resource or reserve, they should not be relied upon or considered a defined resource according to NI 43-101; Except for those properties where NI 43-101 have been completed.

The technical information in this corporate presentation has been prepared in accordance with the Canadian regulatory requirements set out in National Instrument 43-101 and reviewed on behalf of the company by Ross McElroy, P.Geol. Chief Geologist and COO for Fission 3.0 Corp., a qualified person.

# Electricity Demand +150% by 2035

**452** Current Reactors  
Operation

**55** Under  
Construction

**151** Planned

**355** Proposed

Reactor  
Builds at  
25 year high

USA: +28

EUROPE: +35

RUSSIA: +22

CHINA: +136

SAUDI ARABIA: +16

E. ASIA: +10

UAE: +10

INDIA: +28

More reactors operating in 2018  
than in any other time in history

More Japanese reactors coming online  
due to strong regulator support

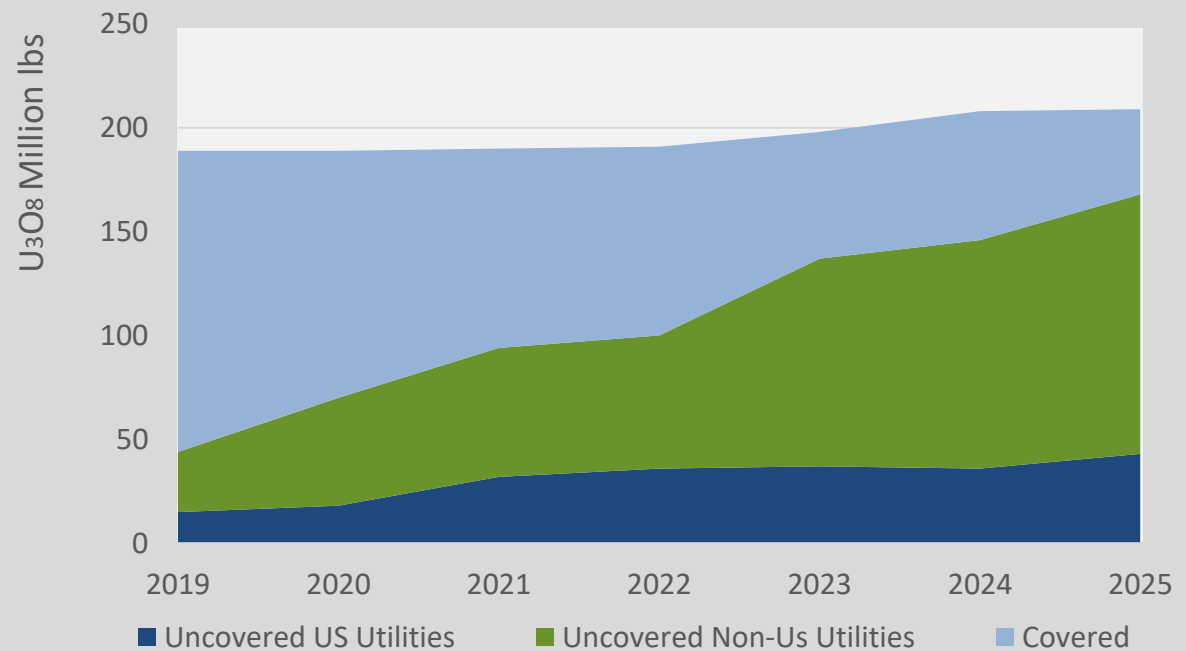
Middle East (home of Big Oil) aggressively  
securing nuclear energy supply

# 1B lbs U<sub>3</sub>O<sub>8</sub> Uncovered in Next 8 Years and Supply Still Being Cut

Utilities are increasingly uncovered

## Low U<sub>3</sub>O<sub>8</sub> price impacts low cost producers

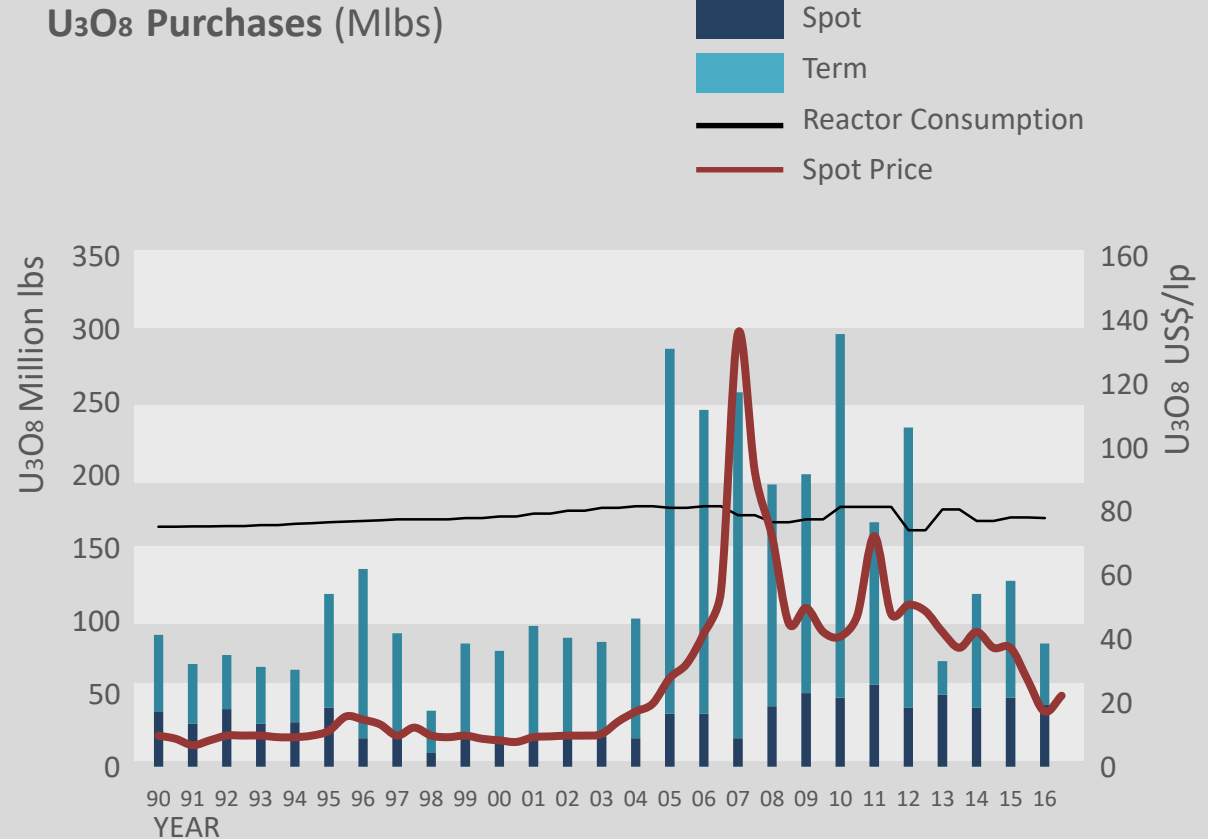
- Kazakhstan production cut by 20% over three years starting in 2018
- Production indefinitely suspended at McArthur River & Key Lake
- Canadian operations shut down at Rabbit Lake and Eagle Point
- Production cuts at Cigar Lake



Source: UxC

# Pressure is Growing for Return to Contracting

- Utilities buy high and sell low
- Lack of long-term contracting leaves utilities exposed
- For contracting to return, prices will have to rise
- The longer the wait, the stronger the upwards pressure on pricing



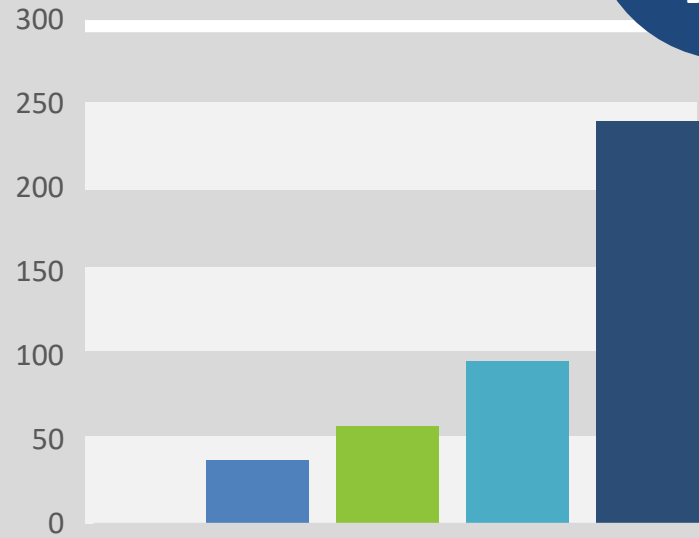
Source: UxC, Uranium Market Outlook, Q4 2016

# China Leading the Reactor Build



Beijing, China: Air Quality Red Alert

China's  
Reactor  
Construction  
Boom



Nuclear Reactors in China by 2030

- Operable
- Reactors Under Construction
- Reactors in Planning Phase
- Reactors in Proposal Phase



# Athabasca: The Premier High-grade Uranium District

Top 5  
Global  
Producers

60+  
years of mining

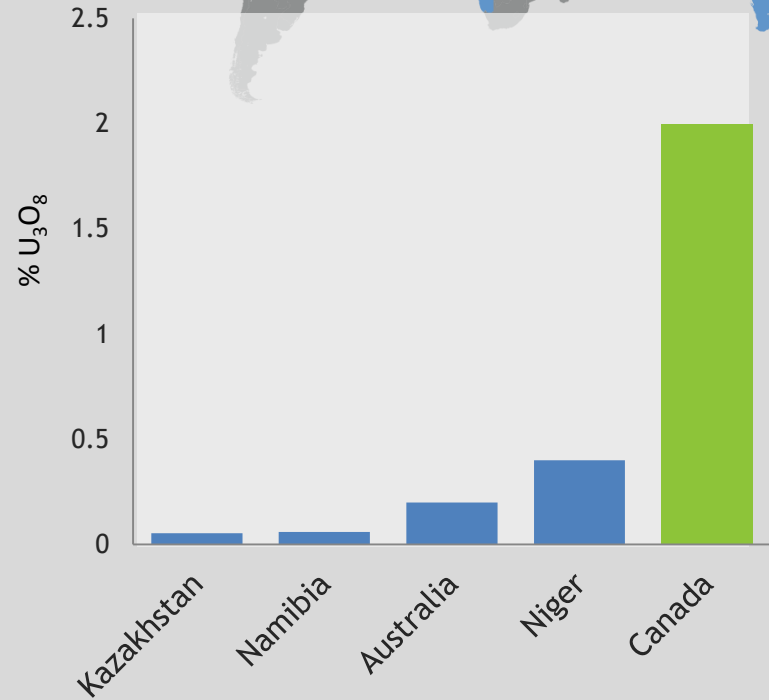
16%  
of the world's uranium

## ENVIRONMENT

- Political stability
- Pro-mining
- Permitting

## INFRASTRUCTURE

- Mills nearby
- Power Grid
- Highways & Air



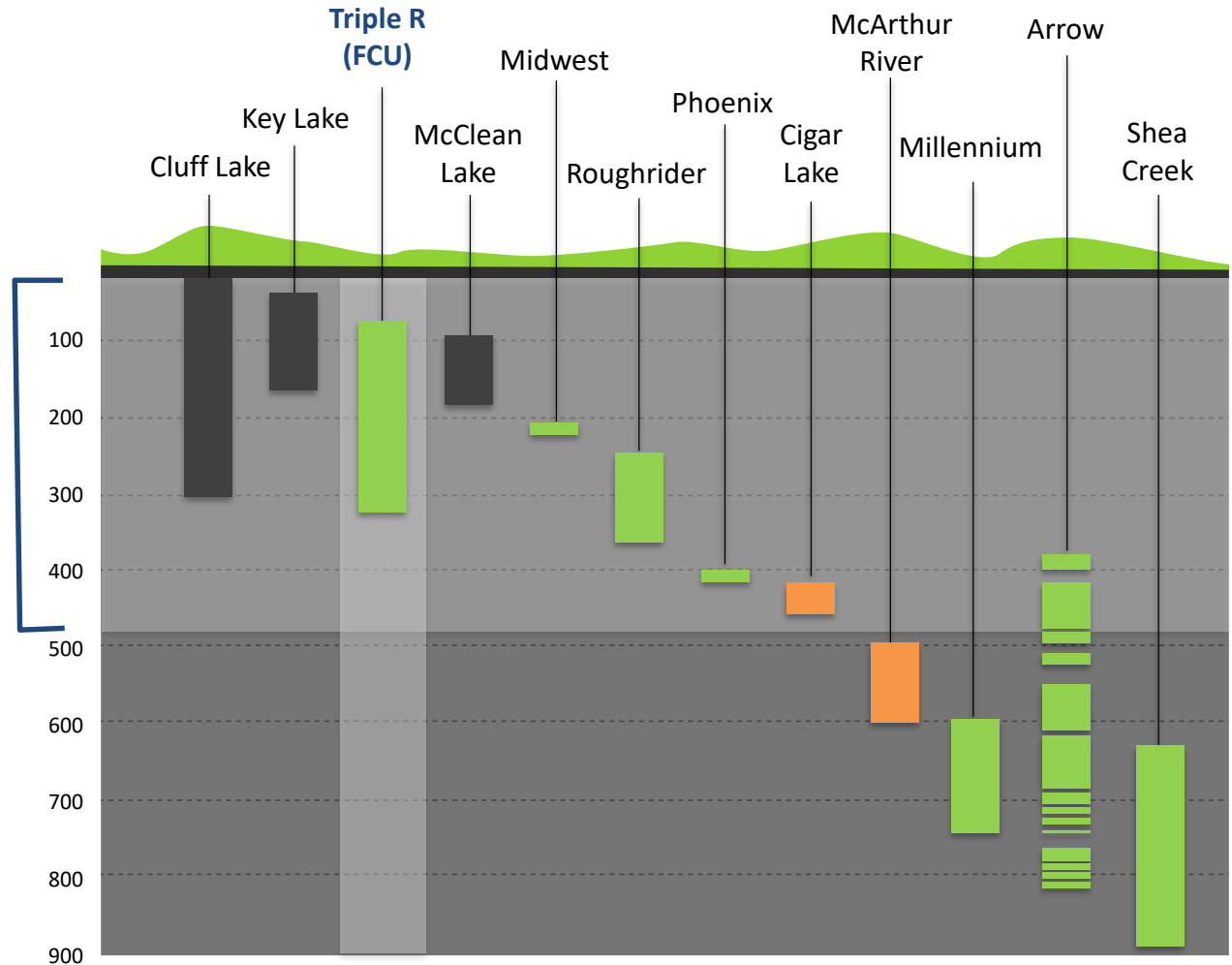
# Low Hanging Fruit Picked First

- Mined Out
- In production
- Undeveloped Discoveries

Exploration  
"Sweet-Spot"



McClean Lake Mine, Saskatchewan, Canada





# Fission 3 Exploration Plans

## PLS Area

- **Patterson Lake North:** Drill test multiple conductors and faults
- **Wales Lake:** Drill test regional geophysics targets

## Beaverlodge Area

- **Hearty Bay:** Trace uranium boulder train up-ice with marine radiometrics survey

## North Central Basin

- **Cree Bay:** Define targets with ground geophysics and drill test

## NE Basin

- **Murphy Lake:** Ground geophysics to define target areas on conductor-rich property

## Key Lake

- **Hobo Lake / Karpinka Lake:** Drill test target areas along major 50km shear zone trend south of Key Lake deposit

# Athabasca Basin Projects: Work Areas for Use of Proceeds



## BEAVERLODGE AREA PROJECTS

- 11 Beaver River
- 12 Midas
- 13 Hearty Bay

## OTHER PROJECTS




- 14 Cree Bay
- 15 Murphy Lake
- 16 North Shore

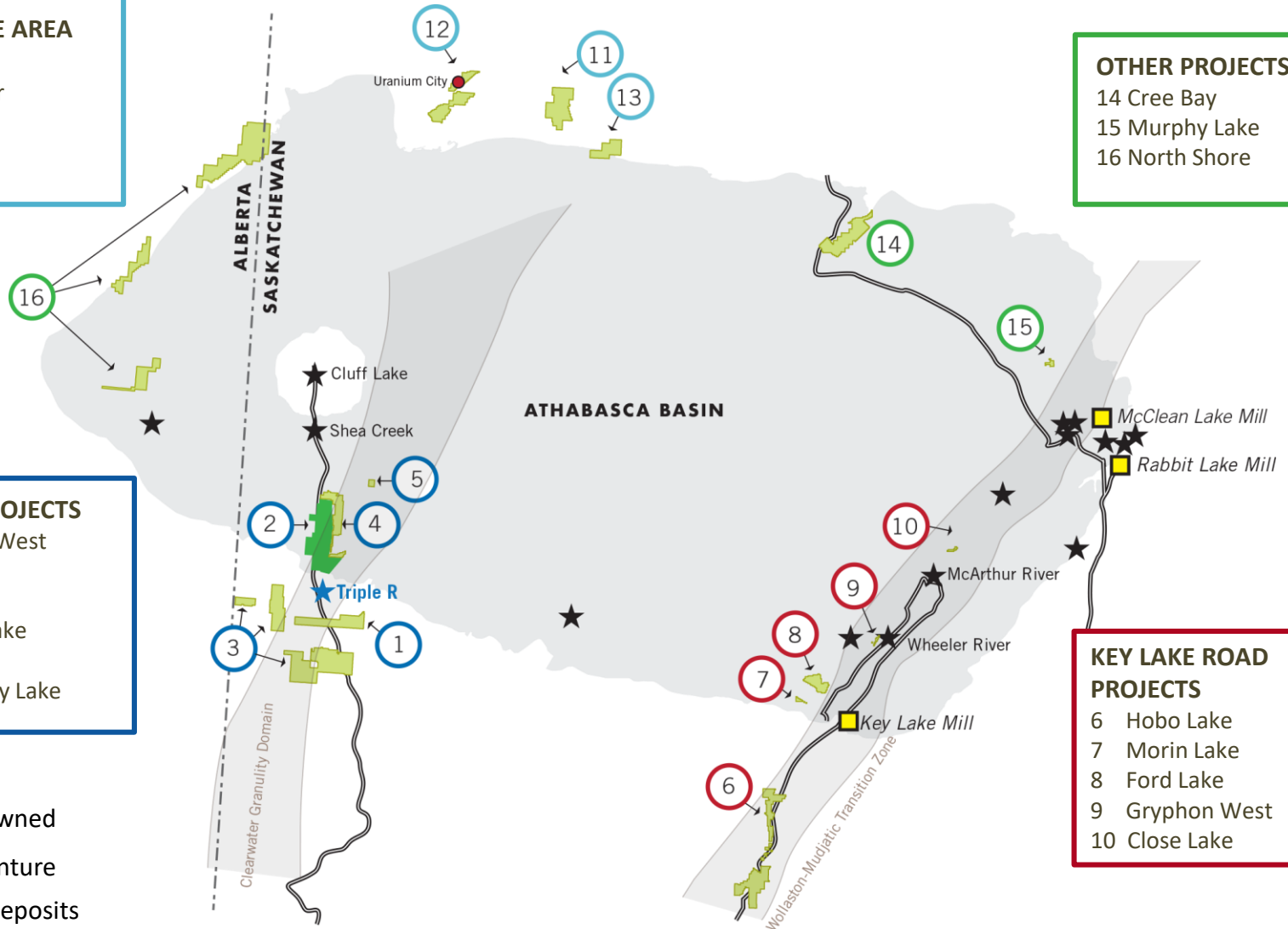
## PLS AREA PROJECTS

- 1 Clearwater West
- 2 PLN
- 3 Wales Lake
- 4 Patterson Lake Northeast
- 5 Montgomery Lake

## KEY LAKE ROAD PROJECTS

- 6 Hobo Lake
- 7 Morin Lake
- 8 Ford Lake
- 9 Gryphon West
- 10 Close Lake

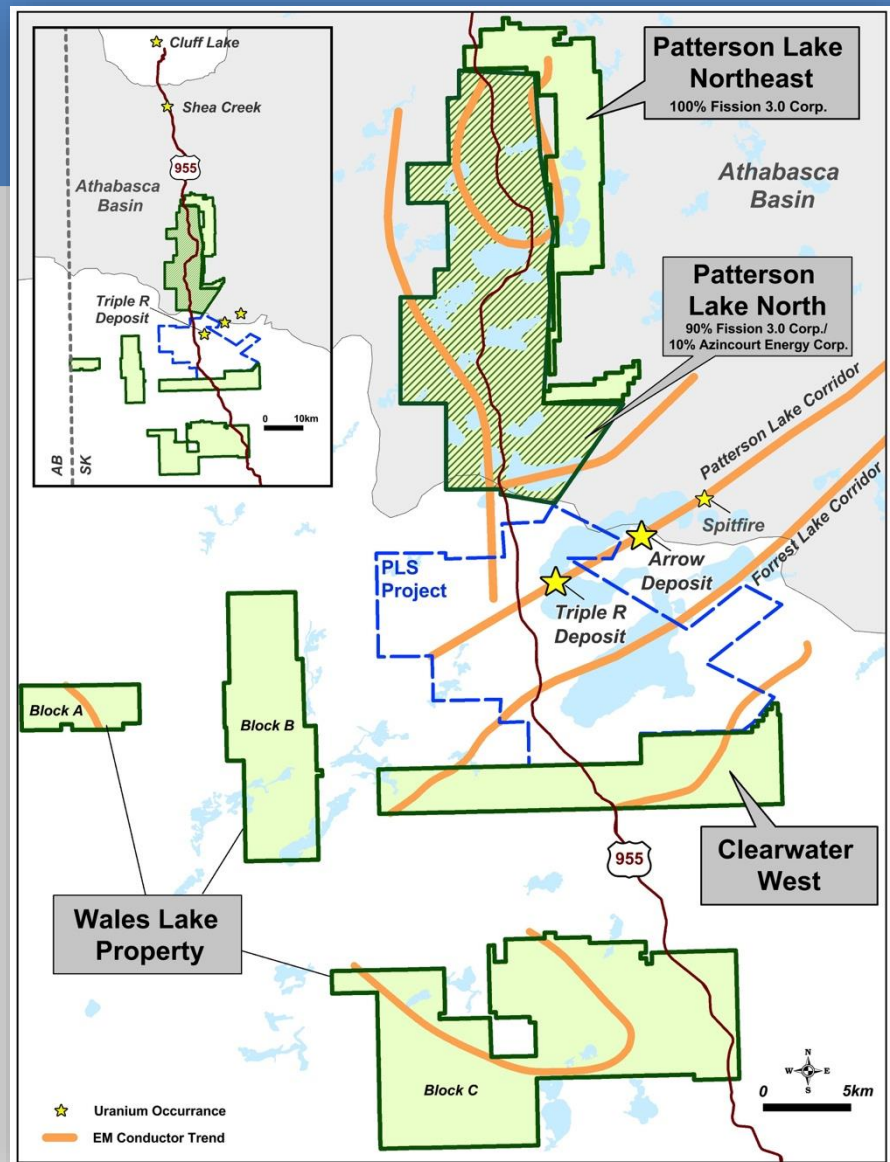
-  100% Owned
-  Joint Venture
-  Major Deposits



# PLS Area Projects

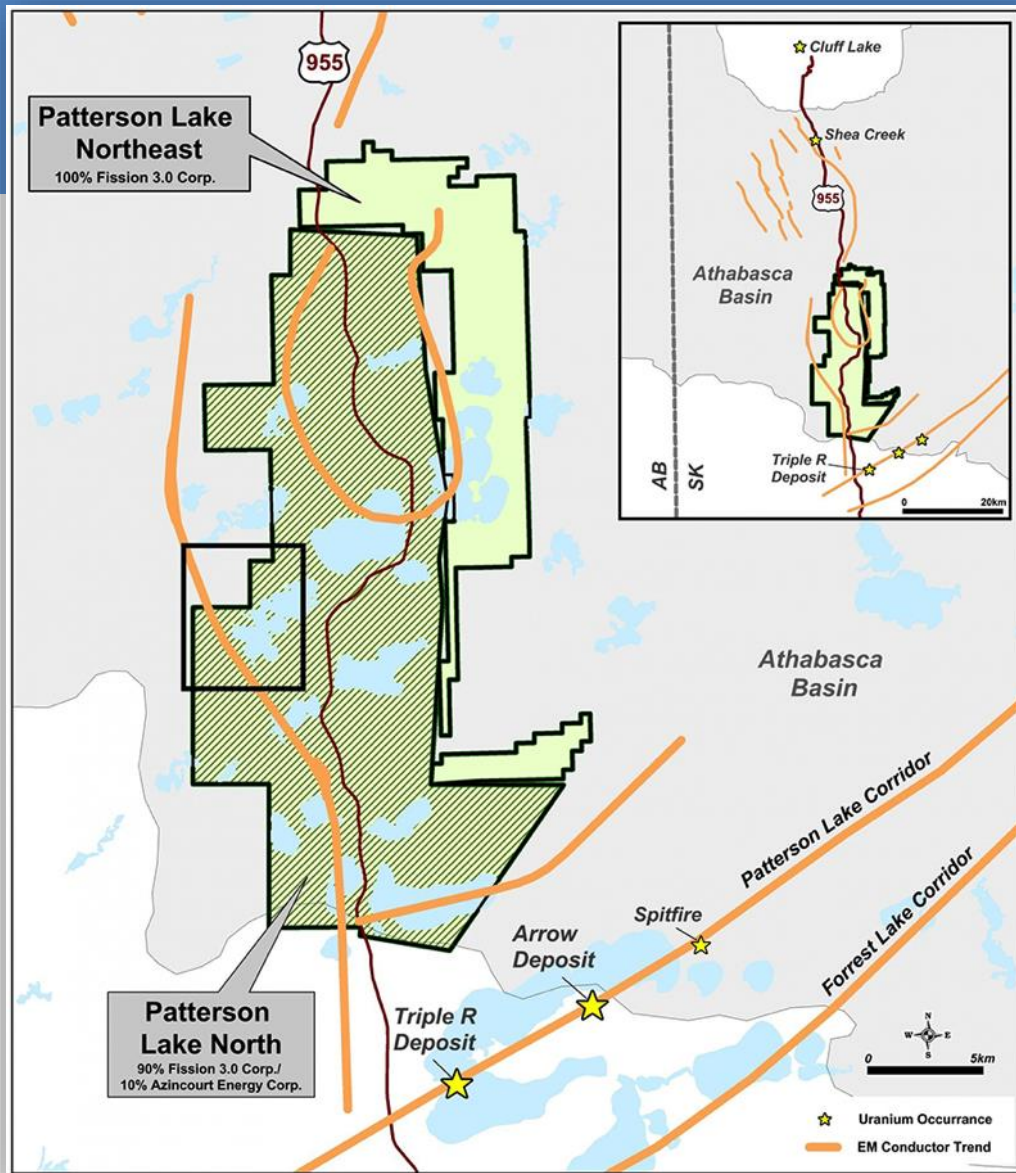
The SW Athabasca Basin region is an emerging major Uranium District hosting large high grade deposits including the Triple R, Arrow, Shea Creek, and Cluff Lake

- Fission 3 has 5 projects totalling 90,000 ha surrounding new major discoveries with potential to host near surface high-grade uranium
- Excellent highway access



# PLN / PLNNE Projects

- Same large scale Clearwater Domain structural corridor associated with Triple R and Arrow deposits
- A1 Conductor mineralized corridor drilled to approx. 700m in length. Large scale potential
- Hole PLN-019 hits 0.5m @ 0.047%  $U_3O_8$  within 6.0m @ 0.012%  $U_3O_8$
- Nearby conductors also exhibit strong anomalous pathfinder elements (Uranium, Boron, Copper, Nickel, Zinc)
- Several untested high-priority targets

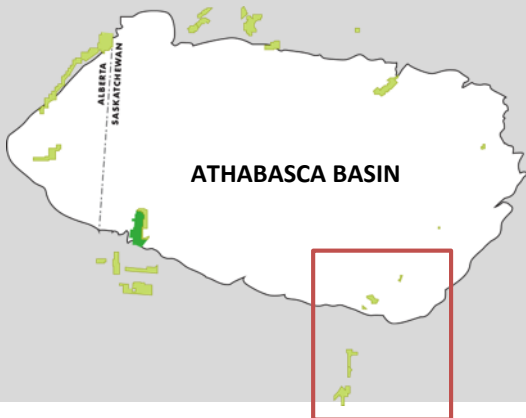
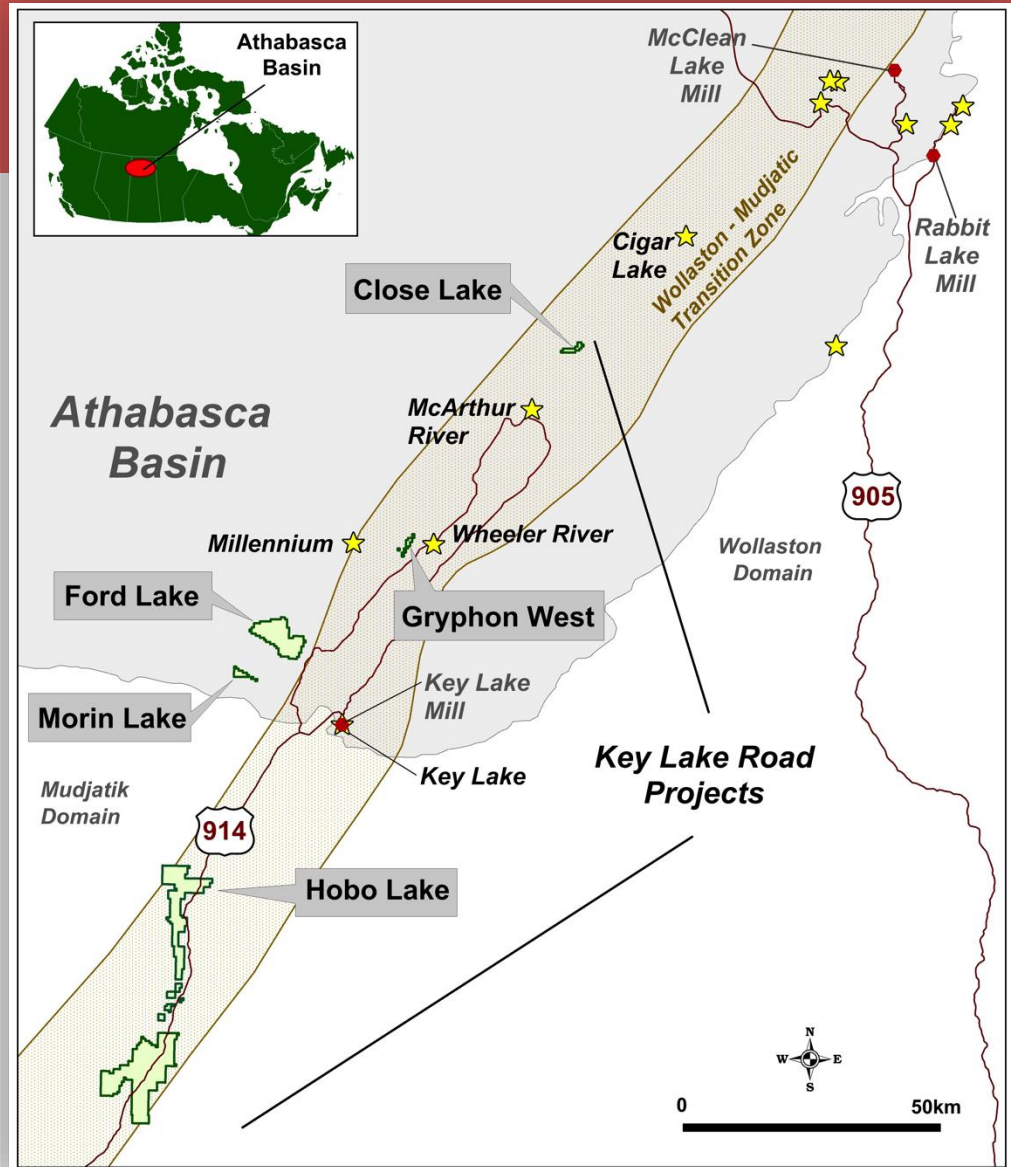


# Key Lake Road Projects

Wollaston-Mudjatic Transition Zone in eastern Athabasca Basin is one of the most important trends of high-grade uranium projects in the world.

Key Lake area is a historically important mining area and home of the Key Lake mill

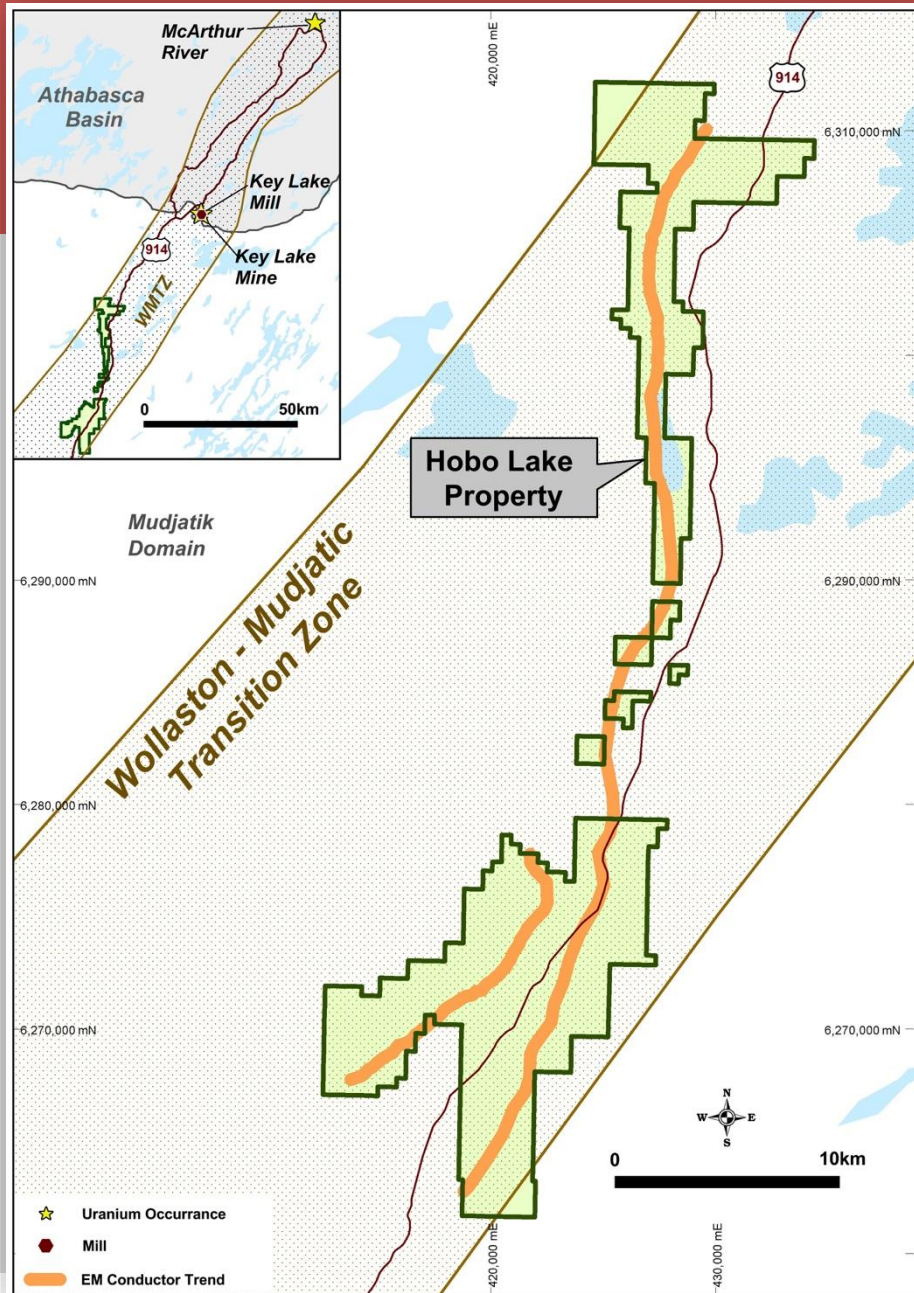
Fission 3 has 5 projects totalling 24,814 ha in this area, all with potential to host near surface high-grade uranium





# Hobo Lake

Drill 7 holes on highest priority area along the Key Lake Shear Zone





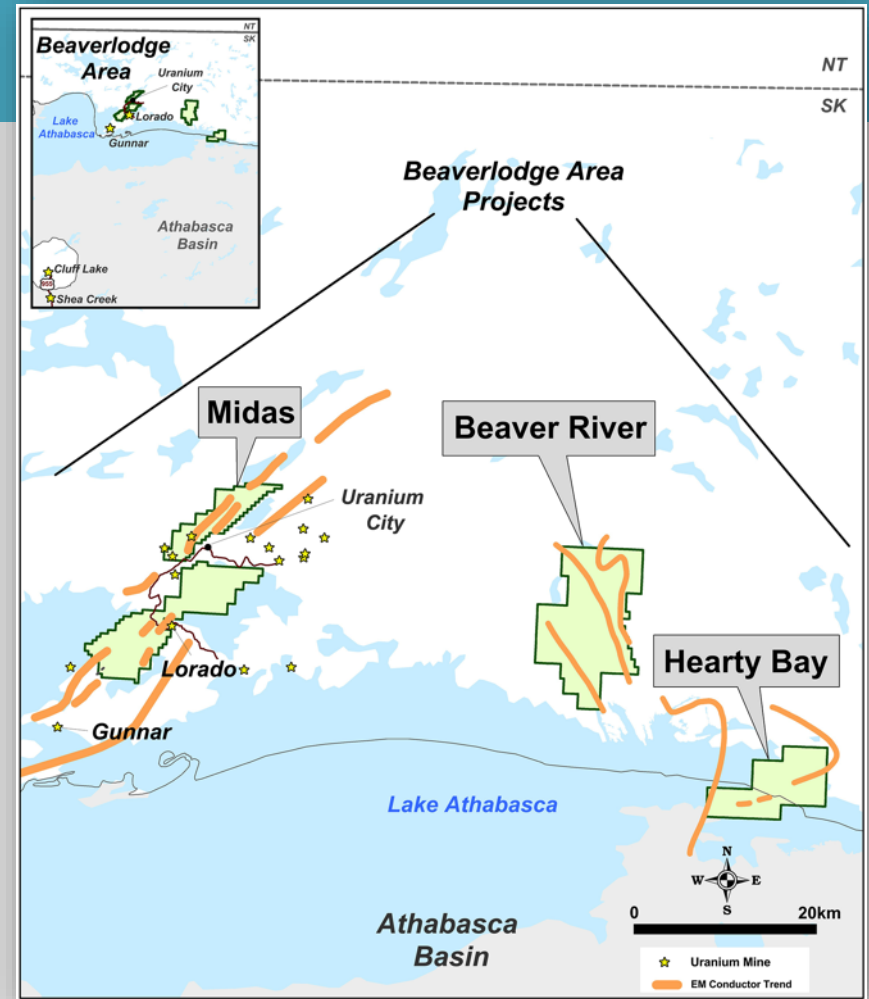
# Beaverlodge Area Projects

Historical major uranium producing district – 52 mines operating in 1950s and 1960s

- 3 projects totalling 32,963 ha in heart of historical mining district. Potential for additional near surface high-grade uranium
- Very little modern day exploration done in area

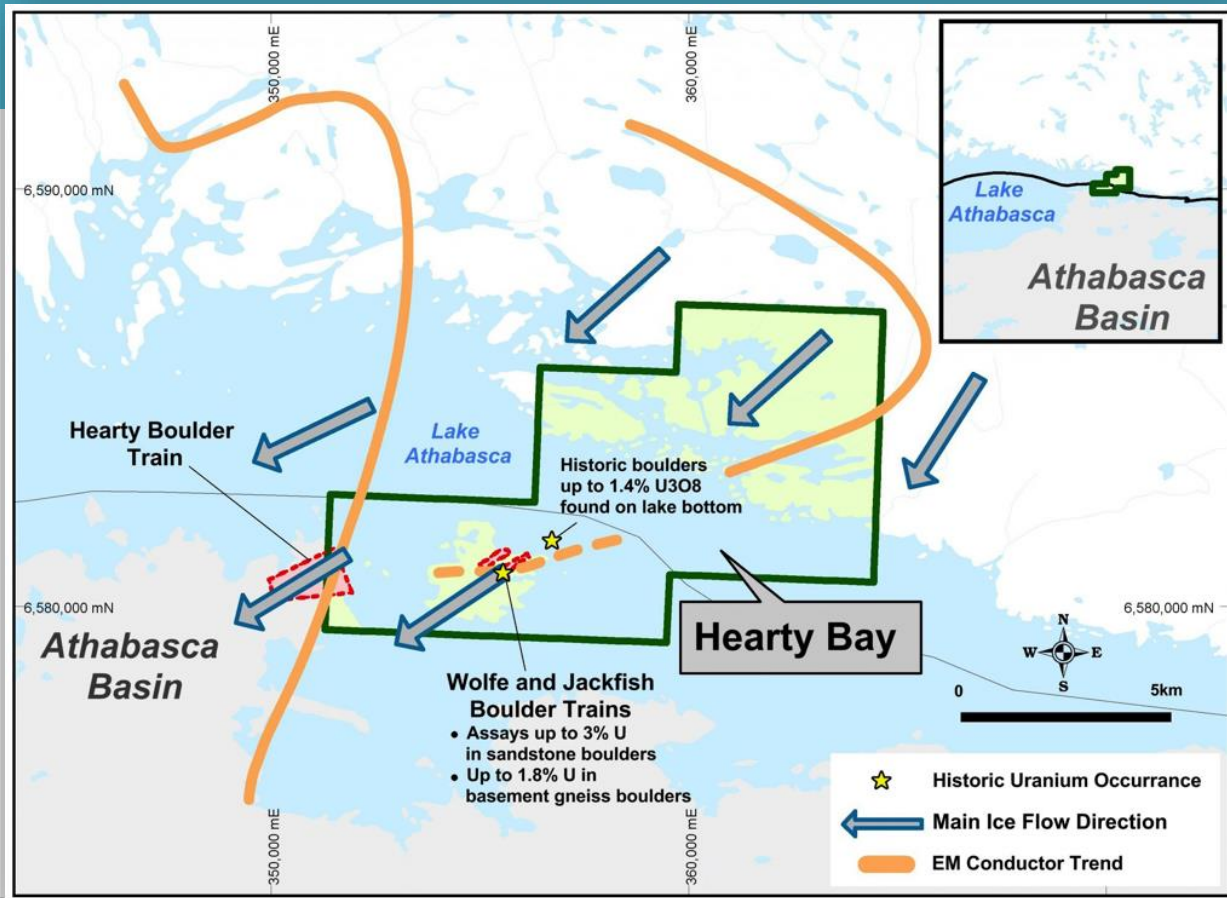
## Summer 2017 exploration highlights:

- High-grade uranium boulders and outcrops located on the Midas property, with assays up to 11.9%  $U_3O_8$ .



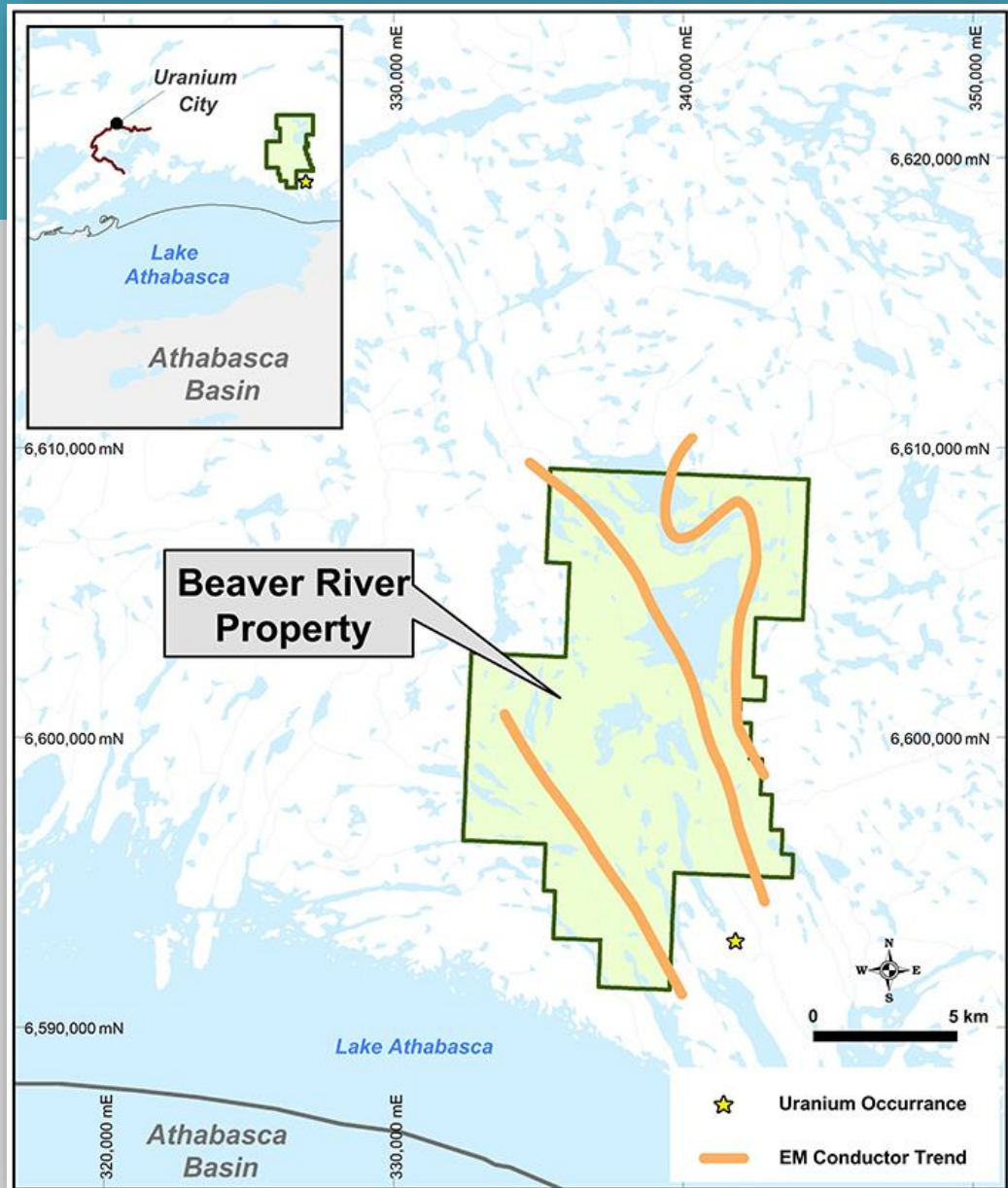
# Hearty Bay

Exploration to trace up-ice direction of uraniumiferous boulder trains using sub-marine radiometrics and lake bottom radon surveys as was successful at Fission's PLS project.



# Beaver River Property

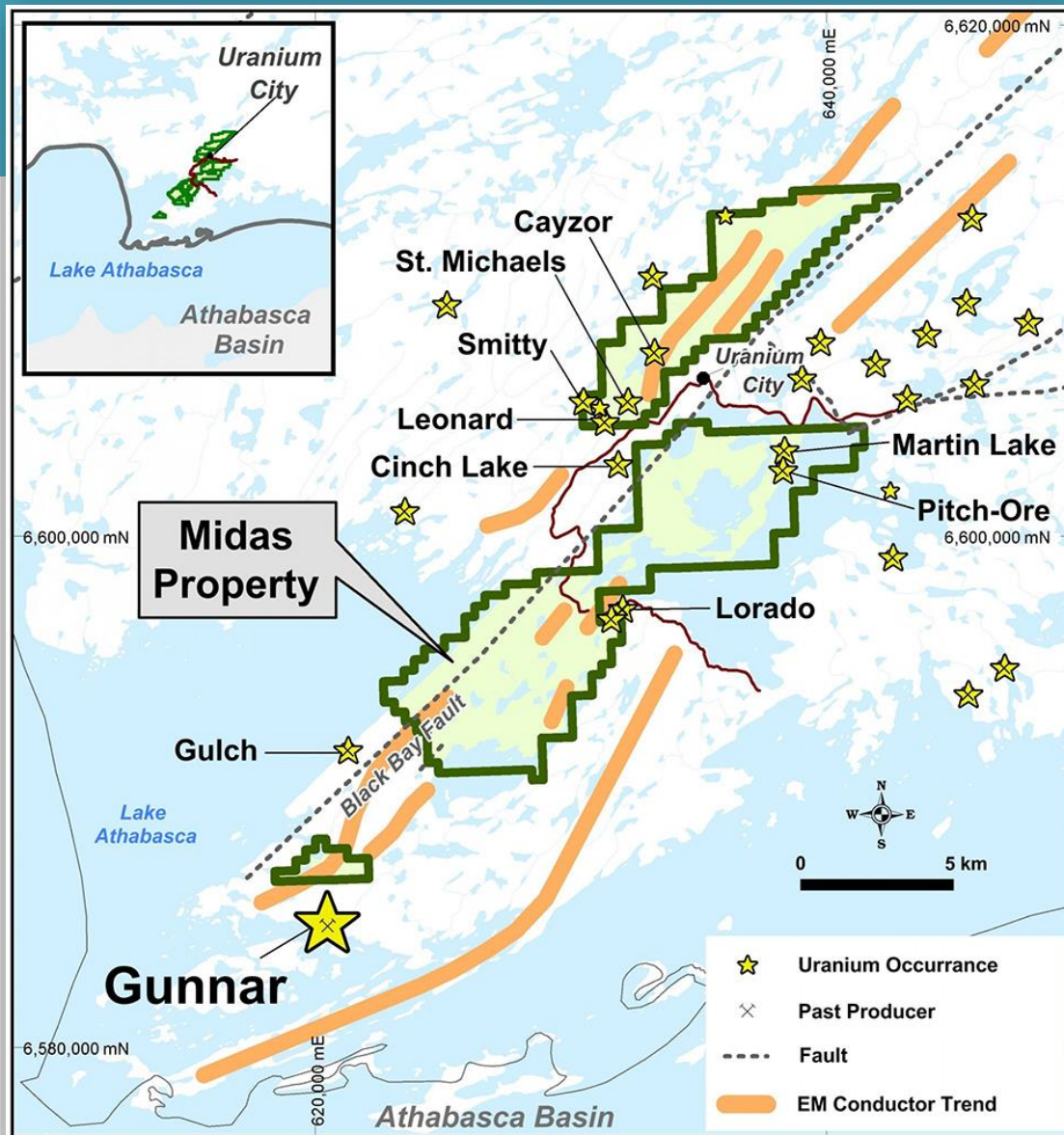
Exploration to focus on developing drill targets on major large scale conductive trends, where multiple historic showings identified



# Midas Property

Property in the heart of the Beaverlodge Mining District. Surrounded by numerous past producers.

Exploration to focus on developing drill targets on major large scale conductive trends to discover near surface mineralization

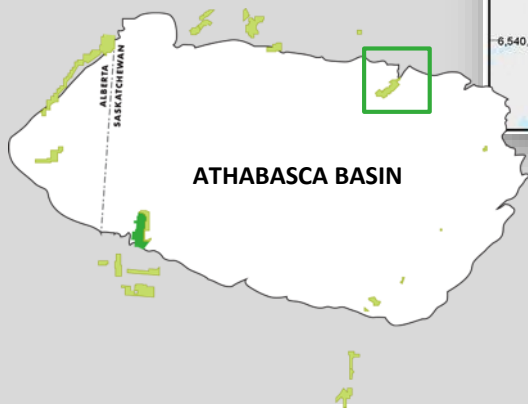
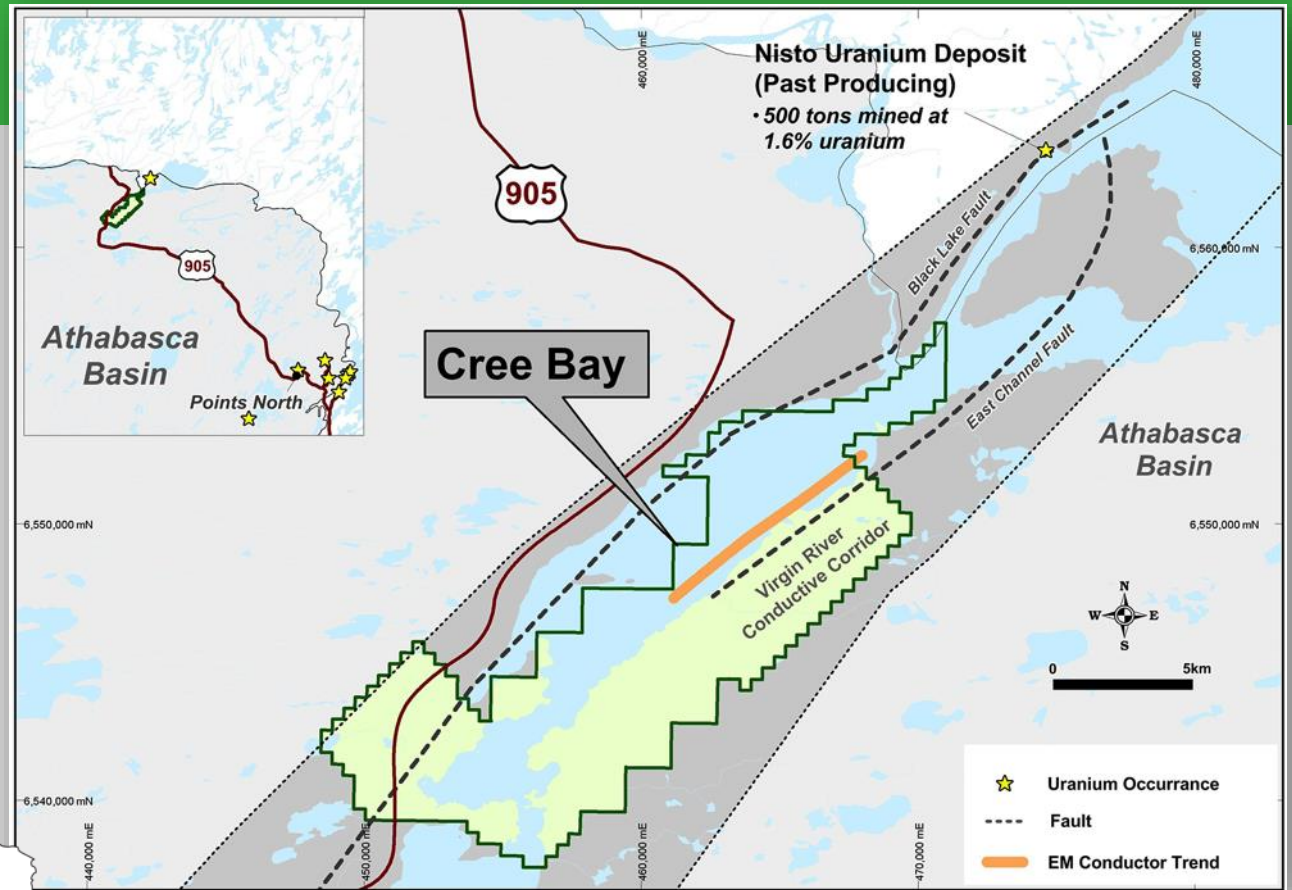




# Cree Bay

Project SW along trend of historic Nisto deposit.

Ground geophysics survey to be completed ahead of drill targeting

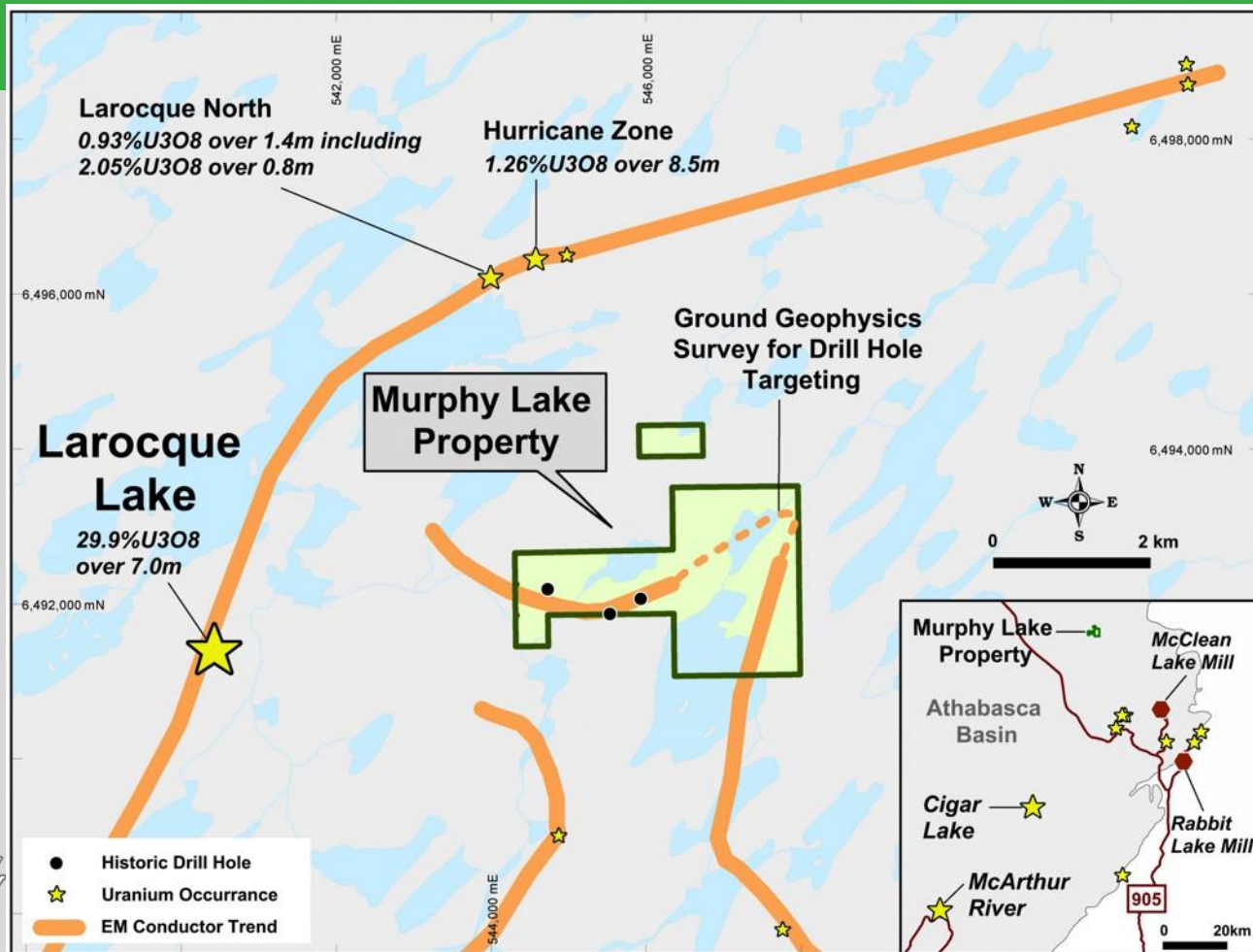


# Murphy Lake

Project located near Larocque Lake uranium discovery

Current exploration at nearby Hurricane Zone upgrading exploration potential of the area

Fission 3 to evaluate conductive trends on its ground



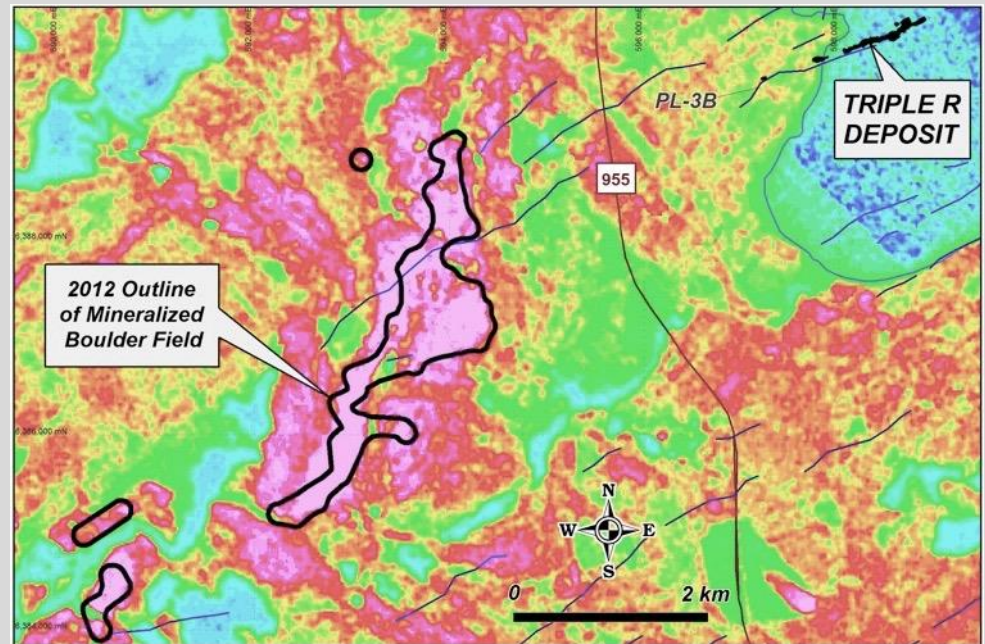


# Special Projects Inc. “Boulder-Finding” Technology

Survey has now been used to identify anomalies at PLN and Clearwater West properties



This innovative airborne survey technology was instrumental in making Fission's high-grade uranium boulder field discovery



# Peru: Long History of Mining and Exploration

- Peru is world's 3rd largest producer of silver and copper and 6th largest for gold
- Government is pro-mining
- Majors have a strong presence in-country  
Rio Tinto, Barrick, Vale, BHP Bilton
- Peru is a founding member of the International Atomic Energy Agency
- Macusani district hosts multiple, near-surface uranium and lithium deposits (Plateau Uranium) that are heap-leachable



# Macusani Project

## Part of Emerging Uranium & Lithium District

- Macusani is surrounded by Plateau Uranium concessions including Uranium and Lithium resources in multiple near surface deposits:

32.8M lbs  $U_3O_8$  Measured & Indicated (445ppm)

72M lbs  $U_3O_8$  Inferred (501) \*

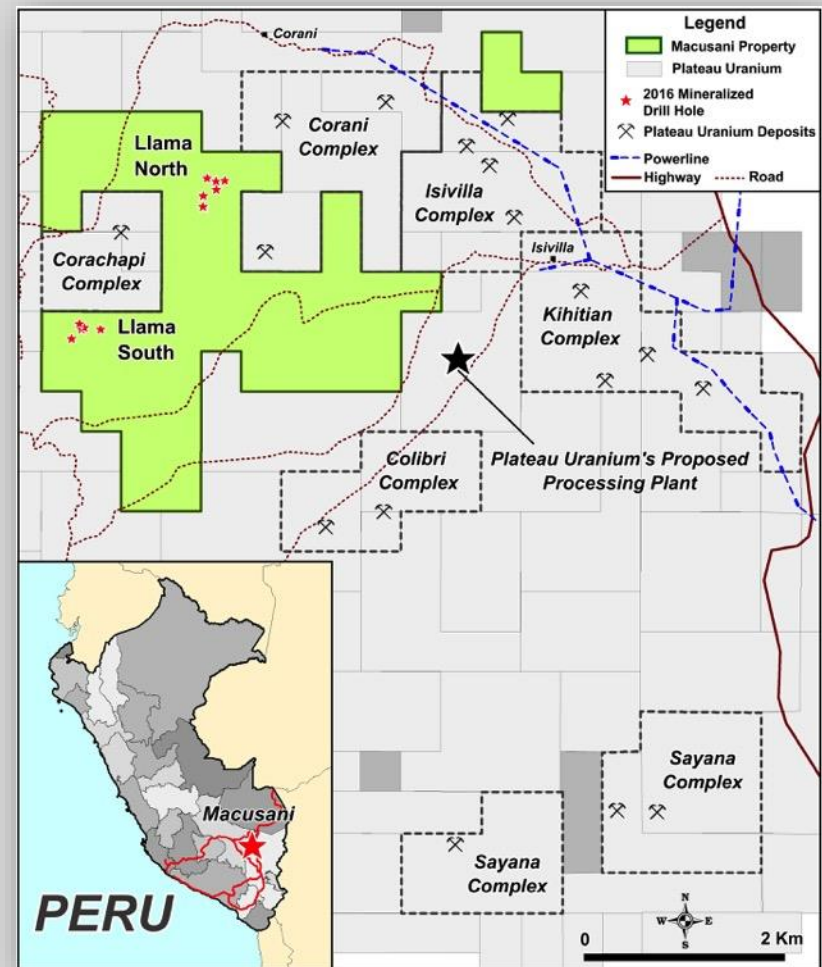
70,000 t  $Li_2O$  Measured & Indicated (248ppm)

109,000 t  $Li_2O$  Inferred (251ppm) \*\*

- Plateau Uranium has stated production could begin in 2019 proposed processing plant within 1km of Macusani property
- Llama North and South on trend with Corapachi and Corani Complex containing 4 deposits
- Existing infrastructure includes hydro electric power grid, water, highway system linked to Ocean ports, labour

\* Cut off at 200ppm

\*\* Cut off at 75ppm

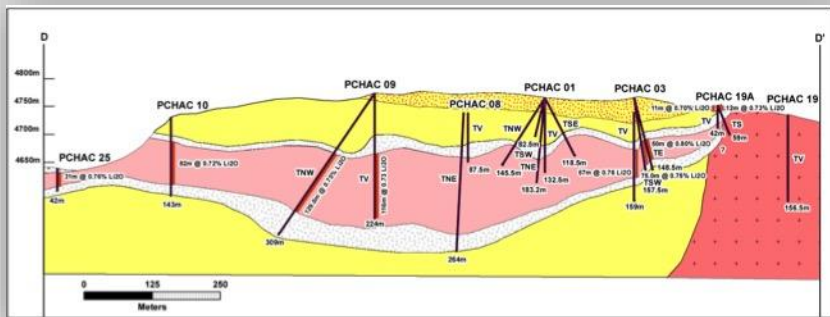


# Macusani Project

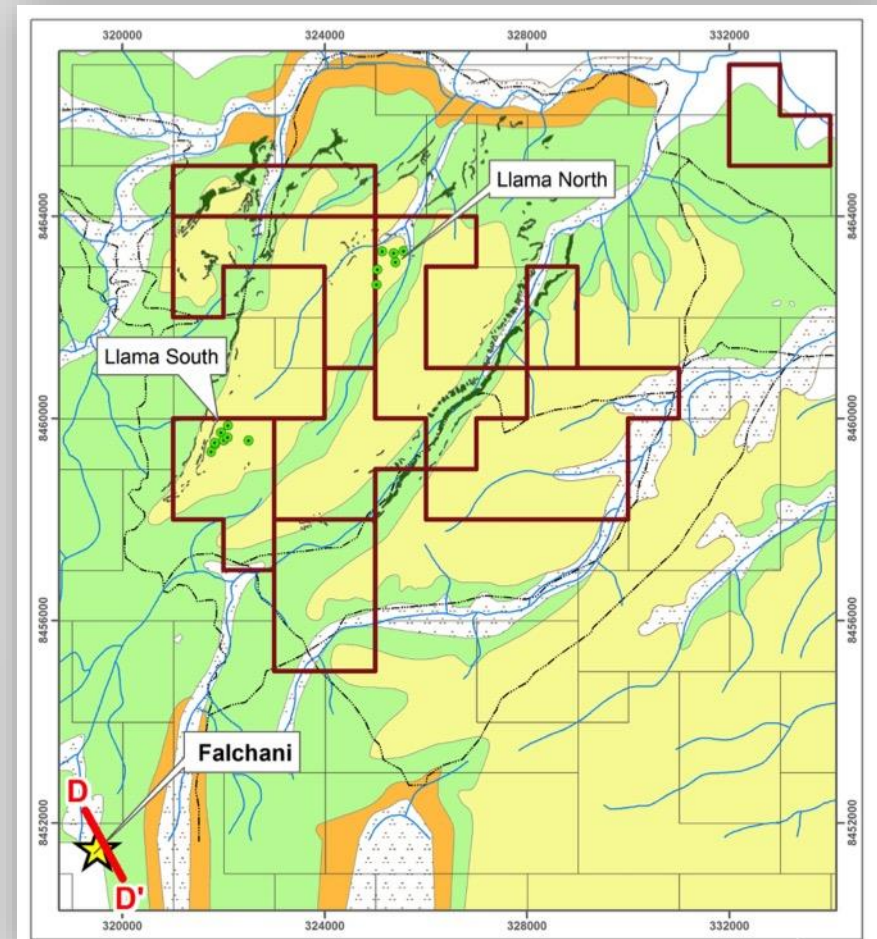
## High Grade Lithium Potential

- Indicated mineral resources: 40.58 million tonnes at 0.67 per cent  $\text{Li}_2\text{CO}$  containing 670,000 tonnes  $\text{Li}_2\text{CO}_3$  (equivalent);
- Inferred mineral resources: 121.70 million tonnes at 0.59 per cent  $\text{Li}_2\text{CO}$  containing 1.76 million tonnes  $\text{Li}_2\text{CO}_3$  (equivalent);

\* Cut off at 200ppm  
 \*\* Cut off at 75ppm



Cross Section (looking NE)



*Within the wider Sapanuta Fm lithium-rich package including the upper and lower breccia units. Based on a 0.1-per-cent  $\text{Li}_2\text{O}$  (lithium oxide) cut-off grade.*



# Rhyolite Letter of Intent – Macusani Project

## OPTION AGREEMENT

- Rhyolite can earn up to 80% interest in Fission 3's Macusani Project
- Expenditures of \$22M over 5 years
- Cash of \$100,000
- Fission 3 granted 19.9% of Rhyolite

## STAGE 1 (50% INTEREST)

- Expenditures of \$5.6M over 2 years
  - Fission 3 is operator during this earn-in phase
- 

## STAGE 2 (80% INTEREST)

- Expenditures of \$16.5M over 3 years

# Corporate Summary

## FINANCIAL SUMMARY

Market Cap: (as at Feb 25, 2019)	approx. C\$ 16.3 million
Cash: (as at Jan 31, 2019)	approx. C\$ 6.6 million
Daily Trading Average (as at Jan 31, 2019)	approx. 240K
Shares outstanding: (as at Jan 31, 2019)	141.9 million
Options: (as at Jan 31, 2019)	10.7 million
Warrants: (as at Jan 31, 2019)	74.8 million
Fully diluted: (as at Jan 31, 2019)	227.4 million

## MANAGEMENT TEAM & BOARD

Dev Randhawa, MBA - Chairman, CEO, Director

Ross McElroy, P.Geol. - COO, Director

Paul Charlish – CFO, Corporate Secretary

Phil Morehouse – President

William Marsh – Director

Frank Estergaard – Director

Jeffrey Mushaluk – Principal

## EXECUTIVE ADVISORY BOARD

Ron Netolitzky, P.Geol.

Michael Halvorson



# Fission 3.0's Industry-leading Team

## Dev Randhawa, Chairman & CEO

- Fission Energy and Fission Uranium founding CEO and chairman
- Former CEO/founder of Strathmore Minerals
- Finance Monthly 'Dealmaker of the Year', Northern Miner 'Person of the Year'
- Founder of Pacific Asia China Energy, sold for \$34M

## Ross McElroy, COO

- Formerly with Cameco, Areva, BHP Billiton
- Fission Uranium President, COO, Chief Geo
- PDAC Bill Dennis Award for Exploration Success', Northern Miner 'Person of the Year'
- Significant role in 4 major uranium discoveries in Athabasca Basin
- Professional geologist of 30+ yrs experience

## Paul Charlish, CFO

- 30 years of finance experience including audit/tax in public practice and financial reporting and tax for public companies
- Specializes in the mining sector and is well versed in the requirements of complex regulatory environments



WWW.FISSION3CORP.COM | TSX-V: FUU



**Fission 3.0**

For further info, contact:

**Fission 3.0 Corp**

Phone: 778.484.8030

Toll Free: 1.844.484.8030

Email: [ir@fission3corp.com](mailto:ir@fission3corp.com)

