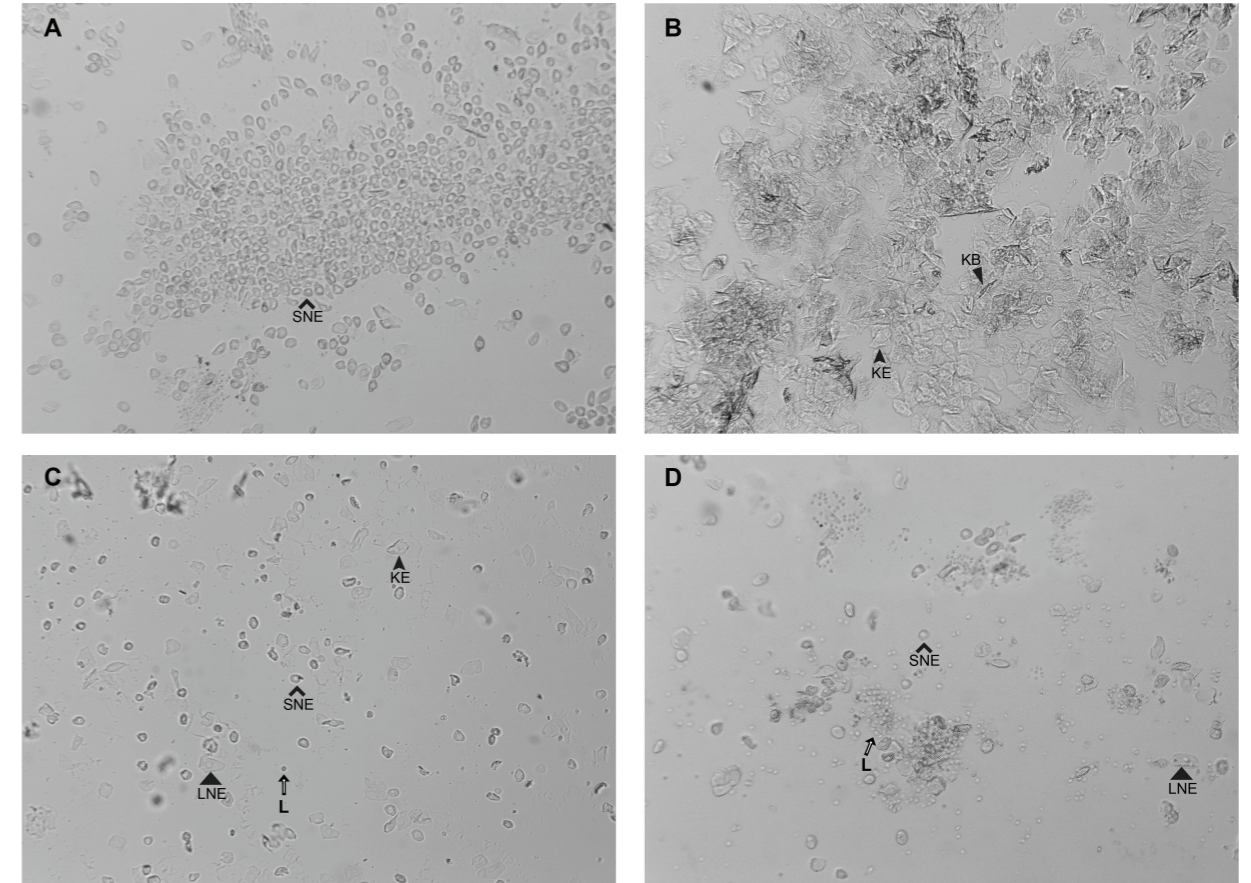
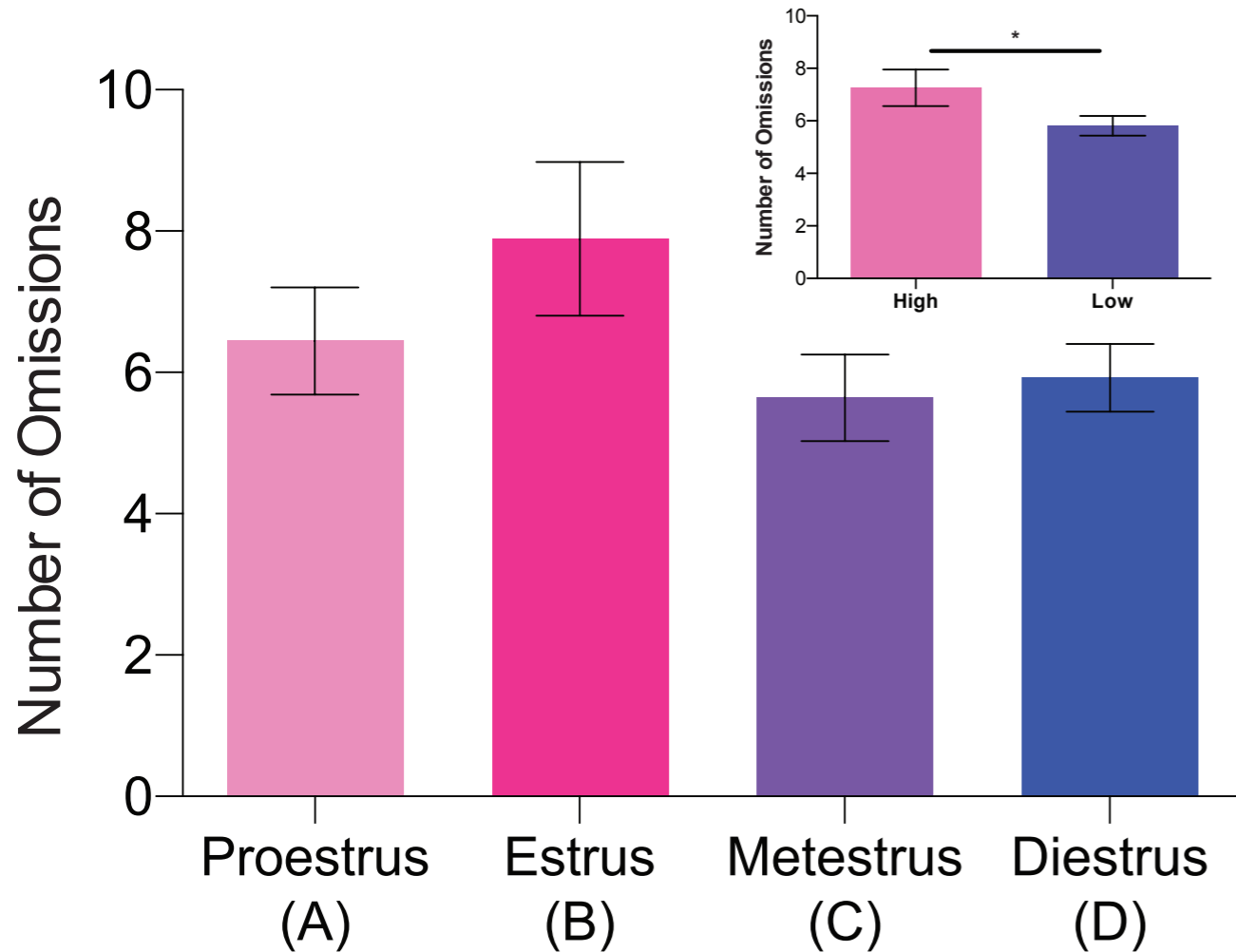


# 4. Rats are more likely to omit choices during high hormonal states, when circulating levels of sex hormones are highest.

## Total Omissions based on Estrous



Representative images of the four phases of the estrous cycle in a female Sprague Dawley rat (unstained; 20x). Vaginal lavages were collected daily after operant sessions to determine the phase of each animal across days. Rats with irregular cycles were excluded from this analysis (n=14).