

Intelligent SharePoint Backup

DocAve[®] Backup and Recovery

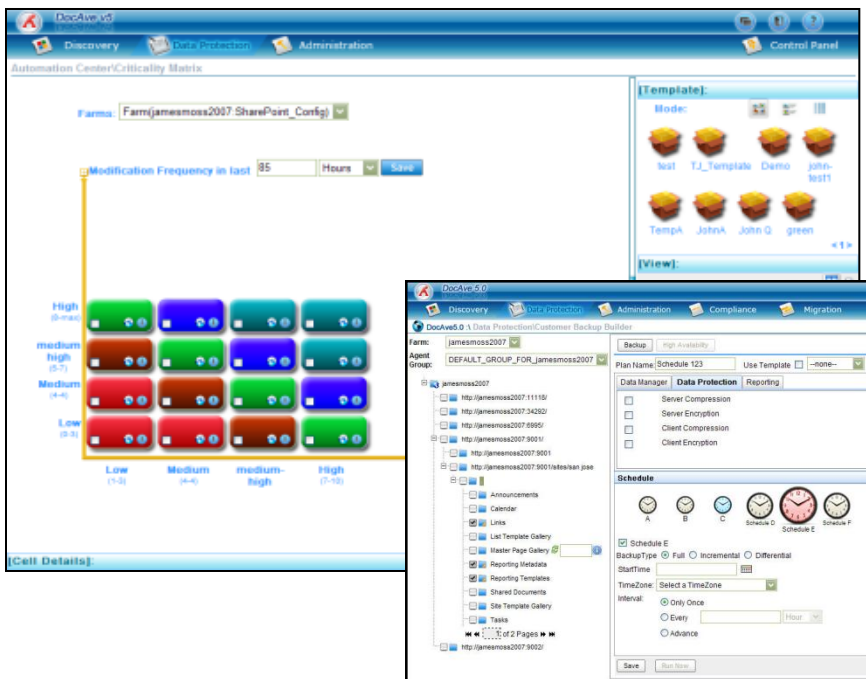
FREE 30 DAY TRIAL
www.AvePoint.com



- Backup & Recovery
- Administration
- Deployment & Replication
- Storage Optimization
- Reporting & Testing
- Compliance & Archiving
- Migration to SharePoint

Business-aware and SLA-driven Protection with Comprehensive Item- through Platform-Level Support and Full Fidelity Restore

DocAve Backup and Recovery addresses the need for a fast, flexible, and intelligent backup solution for Microsoft SharePoint. Full fidelity, item-through-platform level capabilities protects your entire farm, and allows for fast granular recovery. DocAve's exclusive Business Criticality Matrix automatically classifies SharePoint content according to business importance and usage activity. This allows you to optimize storage and system resources and execute rule-based backups based on real-time item level data analyses.



Business Advantages

- Automatic classification of content according to business criticality and usage activity, enables creation of highly targeted backup schedules for optimal coverage
- Fast backup and recovery of business critical documents in a live environment with minimum impact
- Quickly and efficiently recover all SharePoint servers, databases, indexes, and settings, dramatically reducing the effort needed to restore SharePoint components or farms
- Limit service interruptions and data loss to satisfy the most aggressive SLA's while ensuring business continuity
- Safeguard multiple distributed SharePoint farms from a single interface
- Criticality Matrix allows automated backup of content, dramatically improving backup operations and storage efficiency

DocAve delivers full-fidelity backup and recovery functionality – from an individual content item to an entire SharePoint environment and all of its farm-level components – while maintaining all metadata, securities, and version histories. Granular restores can be conducted from DocAve, SQL native backups created by T-SQL script or a maintenance plan, DPM, IBM-TSM, HP Data Protector, as well as third-party embedded SQL backup engines, including HyperBac and LiteSpeed Engine.



DocAve Backup and Recovery Technical Advantages

- Automatic classification of SharePoint content according to business importance and usage activity via the Business Criticality Matrix. More critical content is automatically associated with more aggressive backup schedules. Matrix 'Sandbox' enables building and testing of backup strategies prior to production deployment.
- Full, incremental, and differential backup capabilities for selective farm components enable customers to build backup plans and schedules that focus on frequent backup of high priority data, improving backup operations and storage efficiency. Auto-coalescing of incremental backups automates the generation of full backup jobs.
- Backup and recover entire SharePoint farms or selective components including all servers and back-end SQL databases with all configurations, Index/Job servers, as well as front-end IIS settings and file system resources.
- Full-fidelity backup/restore from DocAve, SQL Server, DPM, IBM-TSM, HP Data Protector, and third-party embedded SQL backup engines, including HyperBac and LiteSpeed Engine, of all lists, libraries and items, including Events, Links, Tasks, Contacts, Announcements, Discussion Boards, Surveys, Issues, Custom Lists, Areas, Sub Areas, Portal Links, Workflow Definitions, Layout Templates, Site Definitions, along with access permissions, metadata and version histories.
- Granular, item-level restore via sliding timeline view, full text keyword search and identification criteria mask search.
- Fast, consistent point-in-time snapshots leveraging Microsoft's Volume Shadow Copy Service (VSS), approaching speeds of up to 170GB/hour.
- Backup to centrally managed tiered network or cloud storage location with built-in encryption, compression, and retention policies. Full integration with EMC Centera technology enables data de-duplication to further optimize storage resources.
- Load balancing across all front-end web servers for efficient resource utilization.
- Restore content from either DocAve, SQL Server, or DPM backups to separate locations or SharePoint instances, file systems or networked file-shares with out-of-place restore.
- Monitor real-time progress of any backup or recovery processes.
- Achieve redundancy and failover through SQL mirroring and optional integration with DocAve High Availability module.

How To Buy DocAve

Call 1-800-661-6588

E-mail Sales@AvePoint.com

Evaluate DocAve Free at
www.avepoint.com/download

For Government Organizations:

The DocAve Software Platform can be purchased directly from AvePoint or through the GSA Website at www.GSAadvantage.gov.



**As with all AvePoint software, DocAve Backup and Recovery leverages only fully supported Microsoft methodologies and API's.*

AvePoint

3 Second Street
Jersey City, NJ 07311, USA
Phone: (201) 793-1111
Fax: (201) 217-8709

For more information visit
www.AvePoint.com

About AvePoint

AvePoint is proud to be a U.S. based technology company and software innovator. Since 2001, AvePoint has been a leader in enterprise-strength infrastructure management solutions for the world's most popular collaboration platforms. Propelled by one of the world's largest development teams, AvePoint's award-winning DocAve and Atlas Software Platforms deliver comprehensive and flexible infrastructure support for SharePoint backup and recovery, replication, migration, administration, archiving, storage optimization, deployment management, compliance, and SharePoint-Salesforce integration.

AvePoint's pioneering technology pilots the products of OEM partners such as NetApp and IBM. With headquarters, research facilities, and engineering centers in Jersey City, NJ, and wholly owned engineering centers and sales offices in San Jose, Los Angeles, Chicago, Washington D.C., and Houston, USA; London, UK; Melbourne, Australia; Munich, Germany; Tokyo, Japan; Singapore; and Changchun, Dalian, China, AvePoint serves over 5000 enterprise customers, including many Fortune-500 companies. Winner of the Best of Tech Ed award for "Best SharePoint Product" in 2008, AvePoint is a Depth Managed Gold Certified Microsoft Partner and GSA Certified Provider.

Microsoft
GOLD CERTIFIED
Partner

