

Capture

PRODUCT DESCRIPTION

Capture is a 5250 screen tracking solution that allows you to automatically capture and save user activity as displayed on System i (iSeries) workstation screens. Capture works silently and invisibly in the background without adversely affecting system performance. Users may not even be aware that it is working. Its invaluable [traceability capabilities] allow organizations to conform with the strict regulations that apply to industries such as banking, insurance, health care, and defense. Capture works as both a stand-alone product and as a fully integrated module in the iSecurity suite.

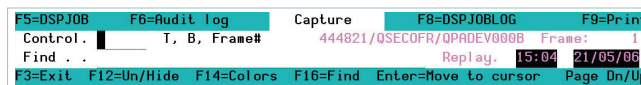
THE CAPTURE SOLUTION

In today's increasingly complex business environment, an effective audit trail is a key component of any organizational IT security program. Regulations require many organizations to maintain detailed transaction activity records and to retain these records for an extended period.

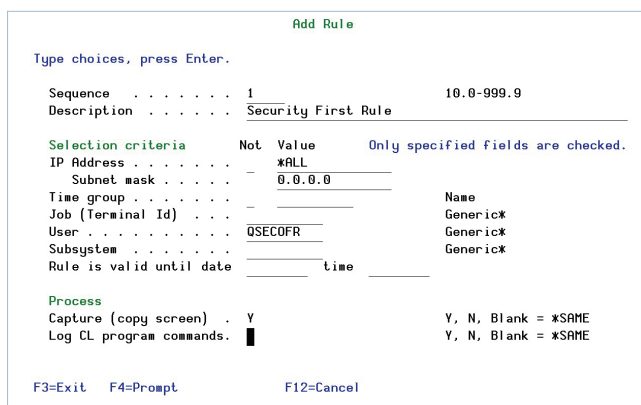
Additionally, IT departments and technical support personnel need to monitor user activity in order to troubleshoot error conditions, track performance bottlenecks, and ensure compliance with organizational policies. This often requires detailed knowledge of not only what users are doing, but also how they are doing it. Computer logs and audit reports, more often than not, do not provide enough forensic evidence for these purposes.

Capture solves that problem. This unique solution complements journals and reports with a visual audit trail of user activity. Capture shows exactly what users are doing and when they are doing it! Captured screens are retrievable by means of an intuitive process featuring flexible scrolling and a powerful free-text search engine. Screen captures occur only when needed. You can retrieve captured screens by means of an intuitive process and easy-to-use tools for locating the captured data screens and logs. Screens are arranged according to individual capture 'sessions'. Within each session, you can scroll through the screens sequentially or you can use the moveable Capture Menu to move directly to a particular screen or search for screens containing a specific text string.

The Capture Menu also provides commands for displaying the job log and the Audit log entries related to that particular screen and capture session. You can even access the DSP JOB command and print the screen directly from the Capture Menu.



The floating Capture menu serves as a convenient control panel for navigating through frames and for displaying job and audit history logs associated with the current capture session.



Simple yet powerful rules creation

KEY FEATURES

- Provides three solutions in one product - a powerful auditing solution, a regulation compliance solution, and a help-desk troubleshooting solution
- Captures and retains user activity on System i workstation screens according to predefined criteria such as IP address, user profile, job, day and time
- Enables compliance with Sarbanes-Oxley, PCI, HIPAA, and the California Privacy Act
- Facilitates retrieval of captured screens with an easy-to-use process and free text search capability
- Preserves job logs and CL Command logs for subsequent review, even after a session is finished
- Uses a simple rule definition process suitable for both IT professionals and non-technical users
- Archives captured screens offline to meet data retention requirements without consuming excessive disk resources
- Easy navigation through captured sessions via moveable Capture Menu

BENEFITS

- Specially designed for non-technical users such as auditors, managers and administrators
- Alerts keep security officers and administrators informed about security breaches in real-time - before it's too late
- Automatic corrective actions minimize damage from security breaches and prevent recurrence
- You determine exactly what will happen, when it will happen, and under what conditions
- User access control features ensure that authorized users have access to the system only at appropriate times
- Adopted authority control prevents users from bypassing system security
- Superior human engineering ensures security implementation quickly, efficiently, and without expensive security consultants

iSecurity
System i Security Solutions

IBM Server *Proven*



SEATM

SOFTWARE ENGINEERING OF AMERICA[®]

Phone: 516.328.7000 • Fax: 516.354.4015 • www.seasoft.com

All trademarks & copyrights are the property of their respective owners.