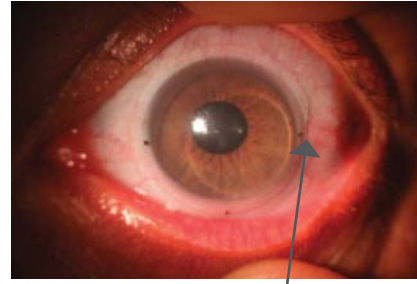


Notching

For those patients with a scleral obstruction such as a conjunctival bleb, a pinguecula, or a pterygium we now provide the ability to add a "notch" to the Atlantis lens. Notches are common when there is a scleral obstruction and fitting a lens inside or over the obstruction is not getting good results. The lens is contoured around the irregularity to relieve conjunctival irritation.



Notch

Product Specifications		
Base Curve	6.50 to 9.12mm	15.0
*Multifocal diameter	7.03 to 9.12mm	16.0
options are 15.0, 16.0	7.18 to 9.12mm	16.5
and 16.5 only.	7.20 to 9.12mm	17.0
	7.45 to 9.12mm	17.5
Limbal Vault Zone	Standard, 1 Steep, 2 Steep, 1 Flat, 2 Flat, 3D Vault 1, 3D Vault 2, 3D Vault 3	
Scleral Zone	Standard, 1 Flat, 2 Flat, 3 Flat, 1 Steep	
Power	+20.00D to -20.00D (in 0.25D steps)	
Toric Scleral Zone	Factor 1, Factor 2, Factor 3	
Cylinder Power	-1.00D to -5.00D (in 0.25D steps)	
Axis	Any	
Multifocal Distance Zones	3.6, 4.0, 4.4	
Multifocal Add Power	+0.75D to +4.00D	
Material	Optimum Extra, Optimum Extreme, Paragon HDS, Boston XO and Boston XO2	
Warranty	90 days for credit on two exchanges per eye and cancellation	
Tangible Hydra-PEG	Available on Optimum Extra, Optimum Extreme, and Optimum Comfort only	
PlasmaEyez	All Atlantis lenses are plasma treated	

*Front Toric is not available on the 3D-Vault and Multifocal designs.

Spare Lenses

Once the patient has been successfully fit and final lenses have been ordered, a spare pair of lenses in the same parameters may be purchased up to 90 days from the final warranted invoice at a greatly reduced price.*

*Offer valid within the US territory only.



Atlantis™

SCLERAL

1-2-3 Fit Strategy

- Easiest to fit scleral lens on the market
- 3D-Vault design with Limbal Control Technology
- Bi-aspheric multifocal design
- Front toric/Toric PC options

The Atlantis Scleral design is easy to fit and comfortable for your patients. The fitting philosophy is based on the premise of customizing the lens fit by manipulating 3 different zones to control the sagittal height relationship of the lens to the anterior ocular surface. This produces one of the widest ranges of lens sagittal depths in the industry.

Design Features	Design Benefits
Large GP scleral lens	GP quality vision with soft lens comfort
Toric periphery	Improved comfort
Front toric optics	Maximizing visual potential
Bi-aspheric multifocal	Freedom from reading glasses
Limbal control technology	Optimizes mid-peripheral clearance

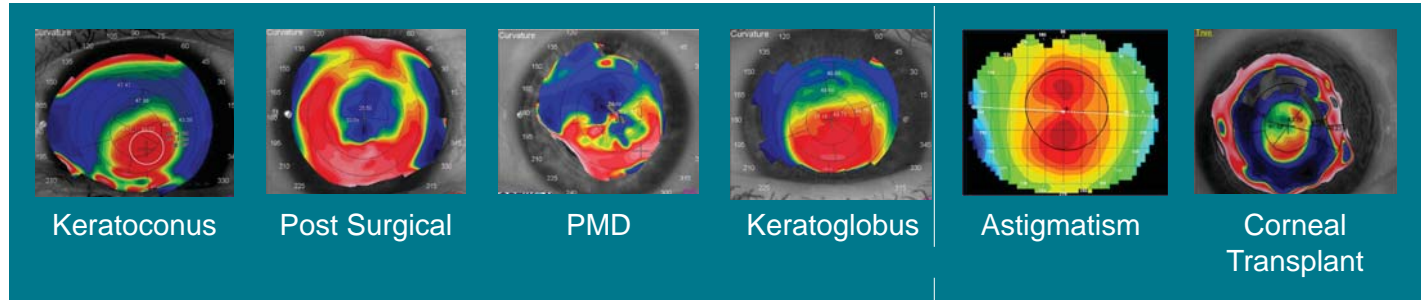
The Design

The design offers 3 proprietary zones which each has a specific function and are independent of each other. The diagnostic set offers laser markings to easily identify the 3 zones to ensure an easier evaluation process for the practitioner along with a comprehensive 1-2-3 Fit Guide, DMV plungers, unpreserved single use saline, a pen light with cobalt blue filter, fluorescein strips, Patient Application & Care Guide and lap towel.

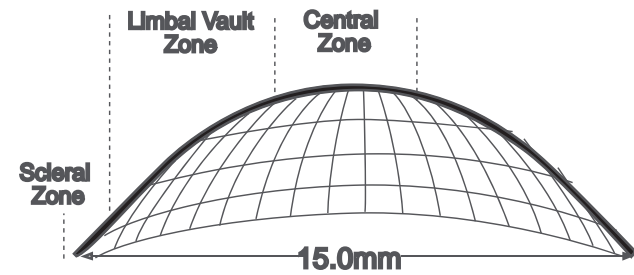
#changinglives™



Patient Indications:

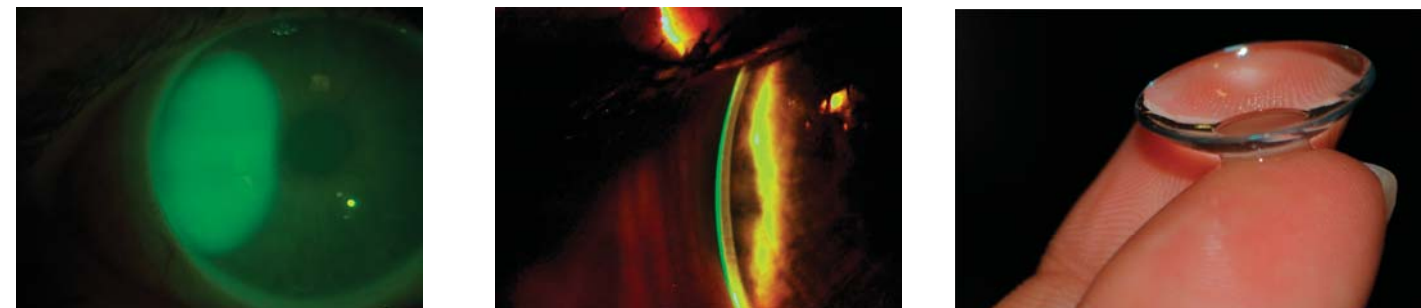


The Atlantis fitting philosophy is based on the premise of customizing the lens fit by manipulating three different zones to control the sagittal height relationship of the lens to the anterior ocular surface. This produces one of the widest ranges of lens sagittal depths in the industry. Each zone has a specific function.



- 1 Central Zone (CZ) - The CZ is designed to clear the cornea. This is the effective posterior optic zone and although it comprises approximately 50% of the back surface of the lens it has the least effect on the lens fit. In fact, most eyes can be fit using just 5 different central zone curvatures.
- 2 Limbal Vault Zone (LZ) - The LZ does what its name implies, i.e. it controls the vaulting effect over the limbus but will not impact the overall sagittal height. This zone has a standard proprietary radius developed to work independently from the CZ. It is also available in radii that are 1 flat, 2 flat, 1 steep, and 2 steep as compared to the standard. Each change in the LZ modifies the limbal zone clearance by approximately 25 microns.
- 3 Scleral Zone (SZ) - The SZ is designed to align with the sclera. This zone has a standard proprietary radius value while also available 1 flat, 2 flat, 3 flat and 1 steep compared to the standard. Each change in the SZ value modifies the overall sagittal height by 50 microns.

FIT



Atlantis Toric Options

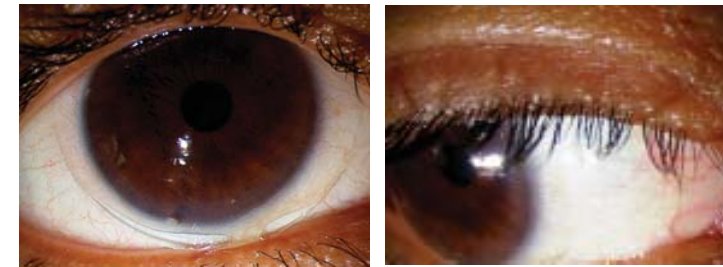
Toric Periphery

To aid in aligning the scleral zone in eyes requiring different values in the principle meridians. Toric periphery designs also aid in orientation and stability when front toric optics are required.

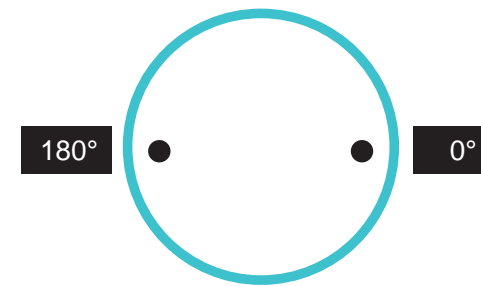
Front Toric

Front Toric optics are available when residual astigmatism is present in the absence of lens flexure.

Studies have shown that as you move away from the limbal area the sclera often has more toricity. With the Atlantis Toric design, you have the ability to adjust the scleral zones to better align to the toric sclera. Whether the scleral shape is with the rule, against the rule or oblique, the laser marks will align with the flatter of the two meridians.



The Toric scleral zones will be marked on the flatter meridian with 2 black laser dots.



Atlantis Multifocal Option

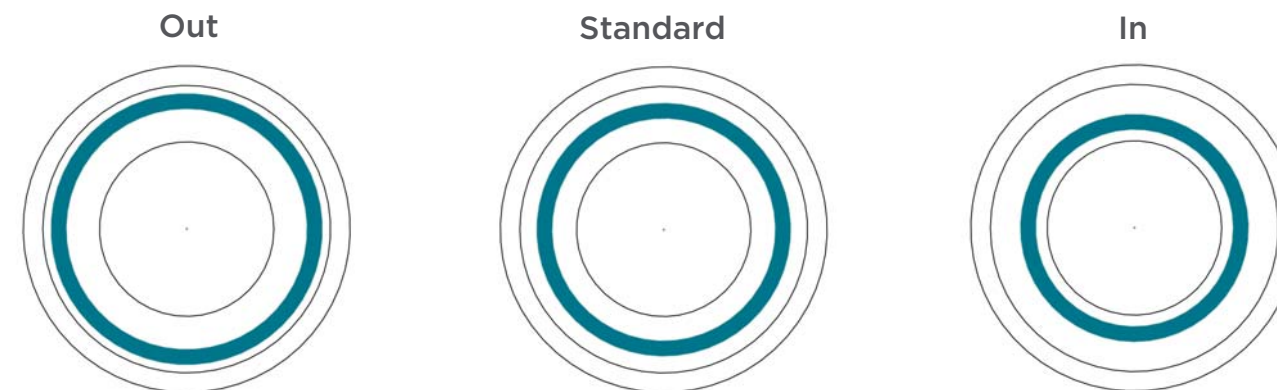
Multifocal scleral lenses can be used for patients with regular or irregular corneas. Atlantis Scleral can deliver multifocal correction up to 3.50 diopters of add power. When fitting the Atlantis multifocal option, the standard diagnostic kit can be used and the only additional parameters to determine are the distance zone diameter and add power.

This bi-aspheric multifocal design does not alter the fit of the lens as the sagittal depth is unchanged compared to the single vision Atlantis lens.

Atlantis 3D-Vault™ with Limbal Control Technology “More than Oblate”

This revolutionary enhancement to the Atlantis line of scleral lenses allows the limbal sag apex to be adjusted in/out or up/down, optimizing peripheral clearance.

This design feature allows custom enhancements for multiple corneal conditions, such as; oblate (post myopic lasik, RK, etc...) and prolate (ectasias, trauma, etc...). This option can be fit utilizing the standard Atlantis diagnostic kit.

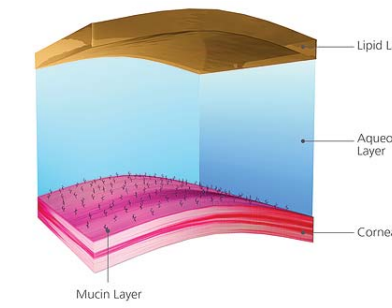


Tangible Hydra-PEG™

Atlantis Scleral lenses are now available with Tangible Hydra-PEG using Contamac Optimum materials. It is the first contact lens coating technology in the world for specialty custom contact lenses. With proper care and maintenance, it can last 1 year (the life expectancy of your scleral contact lenses).

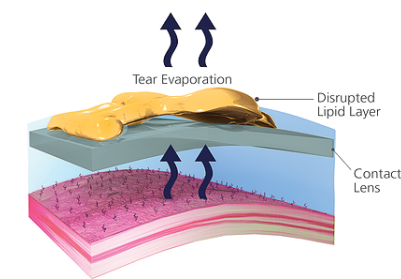
Designed to increase wettability, surface water retention, tear break-up time, and lubricity (fewer deposits), Tangible Hydra-PEG enables Eye Care Professionals to satisfy patients over the long term and focus more on fitting patients, rather than re-fitting the same patients.

Normal Tear Layer



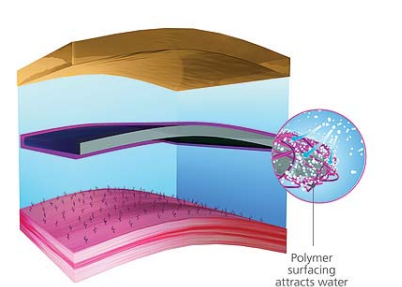
Eyes are kept wet by tears circulating beneath a lipid layer.

Tear Film + Contact Lens



A normal contact lenses often disrupts this natural lipid layer causing dryness, irritation, and lens fogging due to protein build-up.

Contact Lens + Tangible Hydra-PEG™

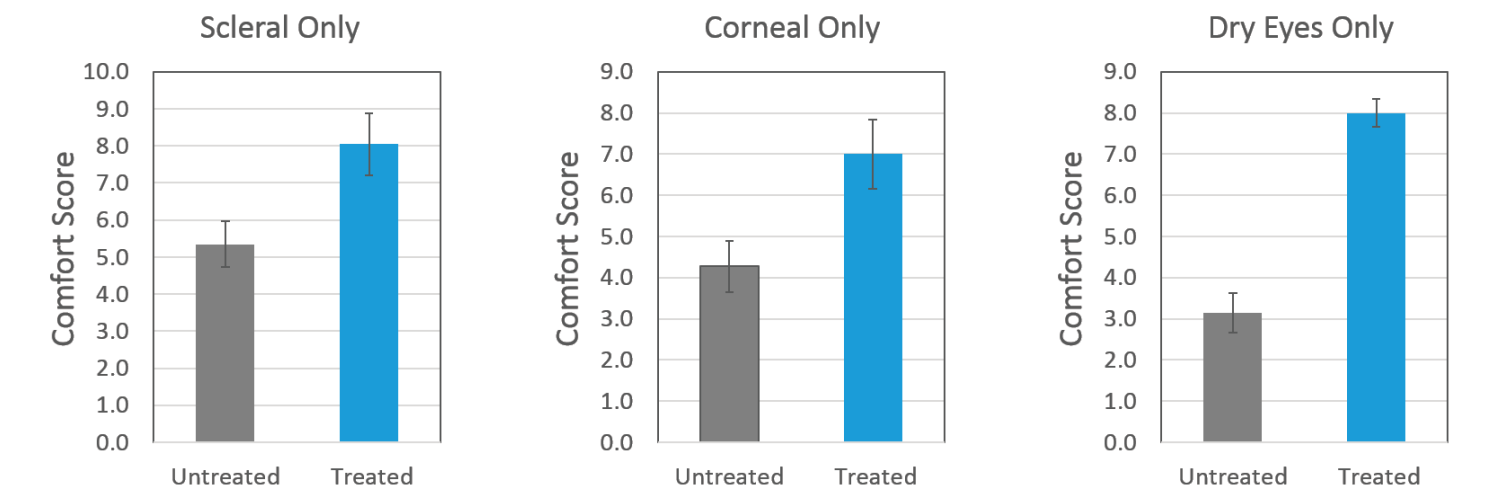


The cushion of tears above your eye is there because of a tear-friendly layer of mucin on the cornea. Tangible Hydra-PEG creates this mucin-like surface on the lens material itself. The coated lens is tear friendly, like the naturally occurring mucin layer, buoyed by tears on both sides. This seamless integration of the lens in to the tear film maintains the lipid layer so the eye is protected against dryness and the lens is protected against protein buildup.

“With this new coating, my contact lenses no longer cloud up after a few hours. I now have the comfort and visibility I was hoping for.”

Actual Testimonial from patient of Andrew Biondo, OD, Kirkwood, Missouri

Tangible Hydra-PEG Comfort Study 17 patients, 34 eyes



Source: Mike Wyss and Michael Bärtschi, Switzerland, 2016