



Atlantis™
SCLERAL

1•2•3 FIT GUIDE

Easiest to fit scleral lens on the market

3D-Vault™ design with Limbal Control Technology

Bi-aspheric multifocal design

Front Toric/Toric PC options



X-CEL

SPECIALTY CONTACTS

With the 1•2•3 FIT strategy, Atlantis™ should be your #1 GP lens of choice for many different ocular conditions. The fitting philosophy is based on the premise of customizing the lens fit by manipulating 3 zones to control the sagittal height relationship of the lens to the anterior ocular surface. The design offers 3 proprietary zones, having a specific function and are independent of each other. The diagnostic set includes laser markings to easily identify the 3 proprietary zones to ensure an easier evaluation process for the practitioner along with a comprehensive 1•2•3 FIT Guide, DMV plungers, unpreserved single use saline, a pen light with cobalt blue filter, fluorescein strips, Patient I&R Guide and lap towel.

Contact X-Cel Specialty Contacts Customer Service to order replacement fitting set or patient supplies.

Preservative-free single use saline

Application and Removal DMV's

Fluorescein Strips

Patient Care Guides

In-Office Patient Brochures with Holder



Image courtesy of: Dr. Edward Carmona, Venezuela

Atlantis™ Scleral Table of Contents

Patient Indications	1
Lens Design	1
1•2•3 Fit Zones	2-3
Initial Lens Selection	4
Fitting & Evaluation Process	4-8
Lens Sagittal Depth Chart	9-13
Troubleshooting	14
Follow-up Evaluation/Schedule.	15-16
Atlantis Toric Options.	17-19
Atlantis Multifocal NEW	20
Conjunctival Elevations/Notching.	21
Atlantis 3D-Vault™ NEW	22
Tangible Hydra-peg Coating	23
Diagnostic Sets.	24-26
Parameter Availability.	27
NO RISK Warranty.	28
FREE In-Office Consultation Services.	28-29
NCLE Consultants.	30
Notes.	31

PATIENT INDICATIONS

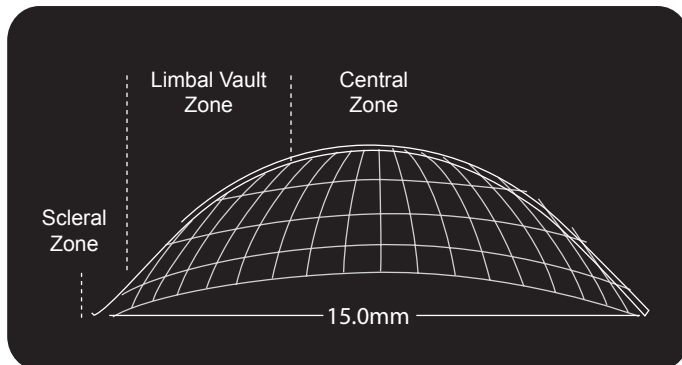
The **Atlantis™ Scleral Lens Design** is indicated for the correction of many different ocular conditions and sagittal depths. Among the conditions with varying sagittal depths are keratoconus, pellucid marginal degeneration, corneal transplants, trauma, post-refractive surgery, post corneal rings and ocular surface disease.



Image courtesy of Buddy Russell, COMT, FCLSA, FLS
X-Cel Specialty Contacts

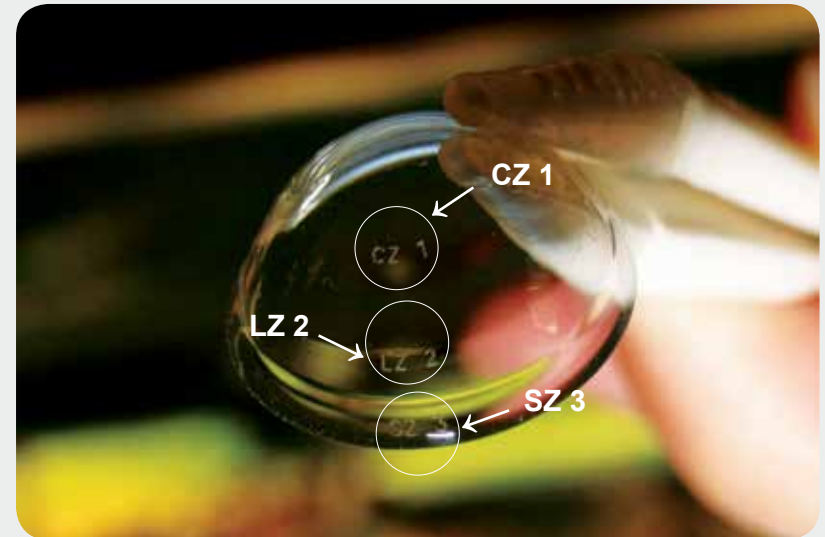
LENS DESIGN

The **Atlantis Scleral Lens Design** is comprised of three zones: 1. **Central**, 2. **Limbal Vault**, 3. **Scleral**, each of which has a specific function. The fitting philosophy is based on the premise of customizing the lens fit by manipulating these zones to control the sagittal height relationship of the lens to the anterior ocular surface. The diameter options are 15.0mm, 16.0mm, 16.5mm, 17.0mm and 17.5mm.



1-2-3 FIT ZONES

The diagnostic lenses have unique identifying marks that note the edges of each of the zones. This provides increased accuracy in determining the fitting relationship of each zone.



Each zone is marked 2 times in case the markings have rotated underneath the lids.

CZ = Central Zone

LZ = Limbal Vault Zone

SZ = Scleral Zone

An additional laser mark has been added to diagnostic sets for lens identification purposes. A 3-digit sagittal depth mark appears on the lens scleral zone.

Example: Lens C Steep will have a laser mark of 404

EASE OF FIT WITH THREE ZONES

Central Zone (CZ) - This zone is designed to vault the cornea. This is the effective posterior optic zone and although it comprises approximately 50% of the back surface of the lens, it has the least effect on the lens fit.

Limbal Vault Zone (LZ)- The LZ zone does what it implies, it controls the vaulting effect over the limbus, but will not impact the overall sagittal height. This zone has a standard proprietary radius developed to work independently from the Central Zone. It is also available in radii that are 1 flat, 2 flat, 1 steep and 2 steep as compared to the standard. Each change in the limbal vault zone value modifies only this effective zone depth by approximately 25 microns.

*See 3D Vault features on (Page 22)

Scleral Zone (SZ) - This zone is primarily designed to align with the sclera and provide sagittal height alterations by changes in its value. The Scleral Zone has a proprietary radius while also available 1 flat, 2 flat, 3 flat, and 1 steep compared to the standard. Each change in the scleral zone value modifies the overall sagittal height by approximately 50 microns.

The **lens thickness** is typically 0.25mm to 0.35mm dependent on the lens power and can be dictated when ordering the patients lenses. **Changes in lens thickness should be made in .10 steps.**

INITIAL LENS SELECTION

When using the diagnostic kit to fit the Atlantis scleral lens, we recommend (regardless of K readings or condition) starting with the "C" lens, with standard scleral zone.

FITTING & EVALUATION PROCESS

1. Apply the diagnostic lens with non-preserved saline and fluorescein.
2. Using the CLS evaluation process (Central, Limbal, Scleral)



The ideal fitting relationships are:

- a. CZ - completely vault the cornea, approximately 200 microns of clearance over the most elevated portion of the cornea. A decrease in clearance will occur with wearing time (loss can range from 50 - 150 microns).

To evaluate approximate clearance, compare the clearance to either the corneal thickness or the lens thickness (lens thickness is represented on the lens vial). Example: .28 thickness = 280 microns.

- b. LZ - completely vault the limbus
- c. SZ - uniform alignment 360°

Use lens marks to aid with parameter adjustments.

FITTING & EVALUATION PROCESS

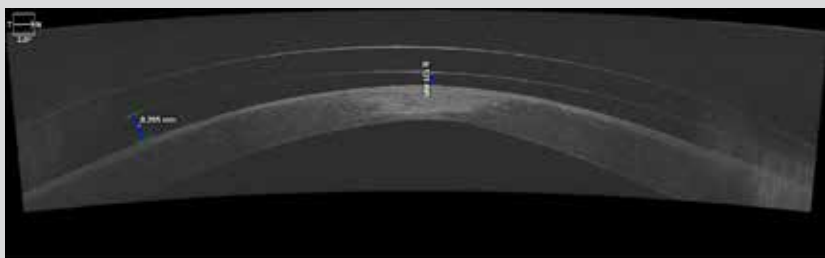
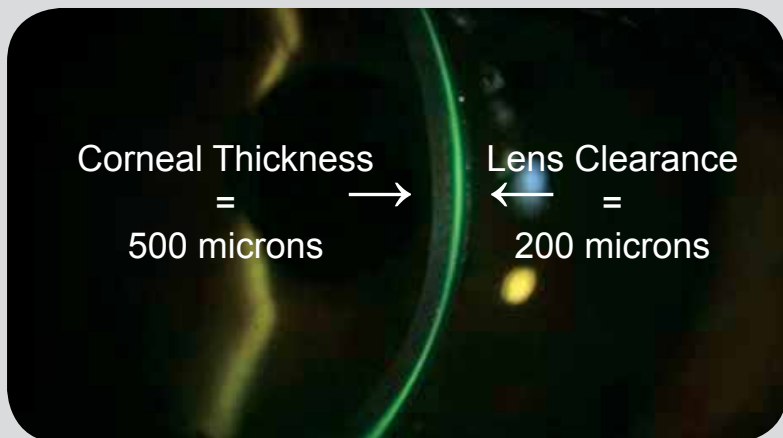


Image courtesy of Buddy Russell, COMT, FCLSA, FSLs, X-Cel Specialty Contacts

3. Perform over-refraction.

- If **1.00D or less** of cylinder is present, consider CT increase by .10 if flexure is determined.
- If **1.00D or more** of cylinder is measured, order the Atlantis Front Toric.

Perform manual keratometry or topography over the lens while on the eye to determine if residual astigmatism is due to lens flexure or internal astigmatism. If no flexure is present, do not increase lens thickness.

EVALUATION CONTINUED

Fluctuating Vision

- Excessive central clearance (Flatten Central Zone)
- Lens surface distortion (Clean lens, re-apply)
- Lens Flexure

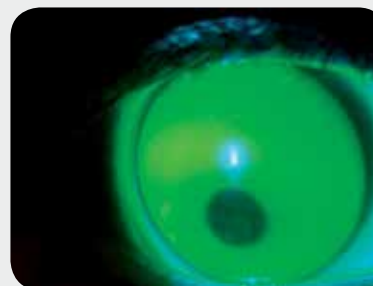
Foggy/Cloudy Vision

- Surface Wettability (Clean surface)
- Chamber Debris (Remove lens, clean and re-apply)
- Excessive central clearance

4. Order Atlantis Scleral from X-Cel Specialty Contacts.

CENTRAL FIT EVALUATION

	1	2	3
Lens decentration	Steepen Base Curve by 1.00D	Increase Diameter	Toric scleral zones
Excessive central clearance	Flatten Base Curve	Flatten Scleral Zone by 1 Step (1 step = 50 microns)	Reduce Diameter
Corneal touch, or insufficient clearance	Steepen Base Curve	Increase Diameter	



Central Zone
Corneal touch, Increase saggital depth

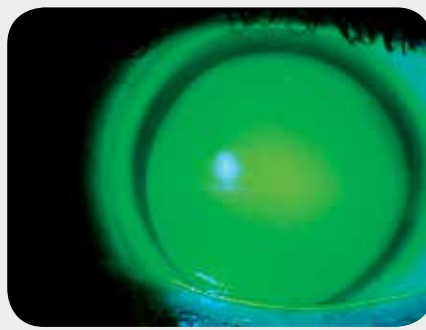
LIMBAL VAULT ZONE EVALUATION

	1	2	3
Excessive clearance	Request Flat Limbal Vault Zone		
Limbal touch	Request Steep Limbal Vault Zone	3D Vault Option (pg 22)	

Small, stagnate bubbles may be acceptable in the Limbal Vault Zone and may resolve over time.



Limbal Zone Bubbles
May indicate excessive limbal clearance



Limbal Zone Bearing Increase (steepen) Limbal Vault Zone or increase lens diameter

SCLERAL ZONE EVALUATION

	1	2	3
Excessive Edge Clearance	Steepen Scleral Zone	Steepen Base Curve by 0.25D	Consider Toric Scleral Zone (pg 19)
Edge impingement, blanching, or compression	Flatten Scleral Zone	Request 2 Flatter Scleral Zone	Consider Toric Scleral Zone (pg 19)



Blanching Scleral Zone too Steep
Consider toric SZ if blanching in only one meridian

Image courtesy of Edgar Dávila-García OD, FIAACLE, NCLE-AC
San Juan, Puerto Rico



Edge Stand-off Scleral Zone too flat (may require toric scleral zones)

Image courtesy of Buddy Russell, COMT, FCLSA, FSL
X-Cel Specialty Contacts

15.0 DIAMETER

SAGITTAL DEPTH CHART

Base Curve	Standard SAG	Base Curve	Standard SAG
9.12 / 37.00	3.005	7.54 / 44.75	4.127
9.06 / 37.25	3.035	7.50 / 45.00	4.169
9.00 / 37.50	3.066	7.46 / 45.25	4.212
8.94 / 37.75	3.098	7.42 / 45.50	4.256
8.88 / 38.00	3.130	7.38 / 45.75	4.301
8.82 / 38.25	3.164	7.34 / 46.00	4.349
8.77 / 38.50	3.192	7.30 / 46.25	4.394
8.71 / 38.75	3.227	7.26 / 46.50	4.443
8.65 / 39.00	3.262	7.22 / 46.75	4.494
8.60 / 39.25	3.292	7.18 / 47.00	4.546
8.54 / 39.50	3.329	7.14 / 47.25	4.599
8.49 / 39.75	3.361	7.11 / 47.50	4.641
8.44 / 40.00	3.394	7.07 / 47.75	4.697
8.39 / 40.25	3.426	7.03 / 48.00	4.754
8.33 / 40.50	3.467	6.99 / 48.25	4.816
8.28 / 40.75	3.501	6.96 / 48.50	4.863
8.23 / 41.00	3.537	6.92 / 48.75	4.928
8.18 / 41.25	3.573	6.89 / 49.00	4.987
8.13 / 41.50	3.610	6.85 / 49.25	5.047
8.08 / 41.75	3.648	6.82 / 49.50	5.100
8.04 / 42.00	3.681	6.78 / 49.75	5.175
7.99 / 42.25	3.719	6.75 / 50.00	5.232
7.94 / 42.50	3.759	6.72 / 50.25	5.292
7.89 / 42.75	3.801	6.68 / 50.50	5.375
7.85 / 43.00	3.835	6.65 / 50.75	5.441
7.80 / 43.25	3.879	6.62 / 51.00	5.508
7.76 / 43.50	3.915	6.59 / 51.25	5.579
7.71 / 43.75	3.961	6.55 / 51.50	5.678
7.67 / 44.00	3.998	6.52 / 51.75	5.756
7.63 / 44.25	4.037	6.49 / 52.00	5.838
7.58 / 44.50	4.086		

16.0 DIAMETER

SAGITTAL DEPTH CHART

Base Curve	Standard SAG	Base Curve	Standard SAG
9.00 / 37.50	3.621	7.46 / 45.25	5.136
8.94 / 37.75	3.660	7.42 / 45.50	5.199
8.88 / 38.00	3.701	7.38 / 45.75	5.265
8.82 / 38.25	3.743	7.34 / 46.00	5.332
8.77 / 38.50	3.778	7.30 / 46.25	5.403
8.71 / 38.75	3.822	7.26 / 46.50	5.476
8.65 / 39.00	3.867	7.22 / 46.75	5.552
8.60 / 39.25	3.906	7.18 / 47.00	5.631
8.54 / 39.50	3.953	7.14 / 47.25	5.714
8.49 / 39.75	3.993	7.11 / 47.50	5.779
8.44 / 40.00	4.034	7.07 / 47.75	5.870
8.39 / 40.25	4.077	7.03 / 48.00	5.965
8.33 / 40.50	4.129		
8.28 / 40.75	4.174		
8.23 / 41.00	4.220		
8.18 / 41.25	4.267		
8.13 / 41.50	4.316		
8.08 / 41.75	4.365		
8.04 / 42.00	4.406		
7.99 / 42.25	4.459		
7.94 / 42.50	4.513		
7.89 / 42.75	4.569		
7.85 / 43.00	4.615		
7.80 / 43.25	4.674		
7.76 / 43.50	4.723		
7.71 / 43.75	4.785		
7.67 / 44.00	4.837		
7.63 / 44.25	4.891		
7.58 / 44.50	4.959		
7.54 / 44.75	5.017		
7.50 / 45.00	5.076		

16.5 DIAMETER

SAGITTAL DEPTH CHART

Base Curve	Standard SAG	Base Curve	Standard SAG
9.12 / 37.00	3.843	7.58 / 44.50	5.485
9.06 / 37.25	3.885	7.54 / 44.75	5.555
9.00 / 37.50	3.929	7.50 / 45.00	5.627
8.94 / 37.75	3.974	7.46 / 45.25	5.703
8.88 / 38.00	4.019	7.42 / 45.50	5.782
8.82 / 38.25	4.066	7.38 / 45.75	5.864
8.77 / 38.50	4.107	7.34 / 46.00	5.950
8.71 / 38.75	4.156	7.30 / 46.25	6.040
8.65 / 39.00	4.207	7.26 / 46.50	6.135
8.60 / 39.25	4.250	7.22 / 46.75	6.235
8.54 / 39.50	4.304	7.18 / 47.00	6.338
8.49 / 39.75	4.350		
8.44 / 40.00	4.397		
8.39 / 40.25	4.446		
8.33 / 40.50	4.506		
8.28 / 40.75	4.557		
8.23 / 41.00	4.610		
8.18 / 41.25	4.665		
8.13 / 41.50	4.721		
8.08 / 41.75	4.779		
8.04 / 42.00	4.826		
7.99 / 42.25	4.888		
7.94 / 42.50	4.951		
7.89 / 42.75	5.017		
7.85 / 43.00	5.072		
7.80 / 43.25	5.141		
7.76 / 43.50	5.199		
7.71 / 43.75	5.275		
7.67 / 44.00	5.337		
7.63 / 44.25	5.401		

17.0 DIAMETER

SAGITTAL DEPTH CHART

Base Curve	SAG	Base Curve	SAG
9.12 / 37.00	4.016	7.63 / 44.25	5.689
9.06 / 37.25	4.061	7.58 / 44.50	5.780
9.00 / 37.50	4.107	7.54 / 44.75	5.856
8.94 / 37.75	4.155	7.50 / 45.00	5.935
8.88 / 38.00	4.204	7.46 / 45.25	6.017
8.82 / 38.25	4.254	7.42 / 45.50	6.103
8.77 / 38.50	4.297	7.38 / 45.75	6.193
8.71 / 38.75	4.350	7.34 / 46.00	6.287
8.65 / 39.00	4.404	7.30 / 46.25	6.386
8.60 / 39.25	4.451	7.26 / 46.50	6.490
8.54 / 39.50	4.508	7.22 / 46.75	6.600
8.49 / 39.75	4.557	7.18 / 47.00	6.718
8.44 / 40.00	4.608		
8.39 / 40.25	4.660		
8.33 / 40.50	4.724		
8.28 / 40.75	4.779		
8.23 / 41.00	4.836		
8.18 / 41.25	4.895		
8.13 / 41.50	4.955		
8.08 / 41.75	5.017		
8.04 / 42.00	5.068		
7.99 / 42.25	5.134		
7.94 / 42.50	5.203		
7.89 / 42.75	5.274		
7.85 / 43.00	5.332		
7.80 / 43.25	5.408		
7.76 / 43.50	5.470		
7.71 / 43.75	5.552		
7.67 / 44.00	5.619		

17.5 DIAMETER

SAGITTAL DEPTH CHART

Base Curve	SAG		Base Curve	SAG
9.12 / 37.00	4.347		7.67 / 44.00	6.224
9.06 / 37.25	4.397		7.63 / 44.25	6.311
9.00 / 37.50	4.450		7.58 / 44.50	6.426
8.94 / 37.75	4.503		7.54 / 44.75	6.523
8.88 / 38.00	4.558		7.50 / 45.00	6.626
8.82 / 38.25	4.615		7.46 / 45.25	6.733
8.77 / 38.50	4.664			
8.71 / 38.75	4.724			
8.65 / 39.00	4.786			
8.60 / 39.25	4.839			
8.54 / 39.50	4.904			
8.49 / 39.75	4.961			
8.44 / 40.00	5.019			
8.39 / 40.25	5.079			
8.33 / 40.50	5.153			
8.28 / 40.75	5.217			
8.23 / 41.00	5.283			
8.18 / 41.25	5.351			
8.13 / 41.50	5.422			
8.08 / 41.75	5.495			
8.04 / 42.00	5.556			
7.99 / 42.25	5.634			
7.94 / 42.50	5.716			
7.89 / 42.75	5.801			
7.85 / 43.00	5.872			
7.80 / 43.25	5.964			
7.76 / 43.50	6.040			
7.71 / 43.75	6.140			

TROUBLESHOOTING TIPS

Small application bubbles are not uncommon and do not usually cause problems.

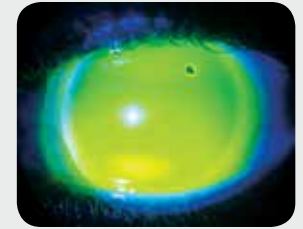
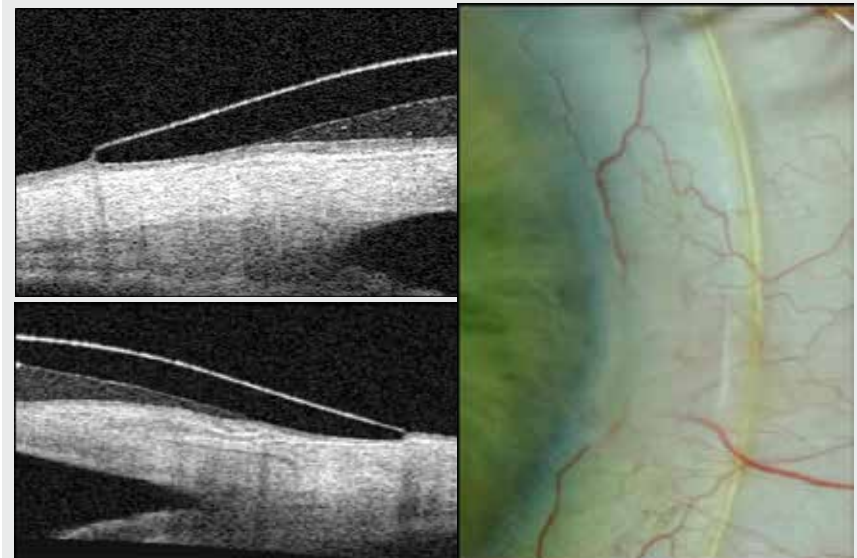


Image courtesy of Edgar Dávila-García OD, FIACLE, NCLE-AC, San Juan, Puerto Rico

The lens should rest completely outside of the limbal area. If the limbus is not completely vaulted, future complications may occur.



FOLLOW-UP EVALUATION

Lens movement will be minimal (similar or less than a soft lens) and there will be very little tear exchange behind the lens.

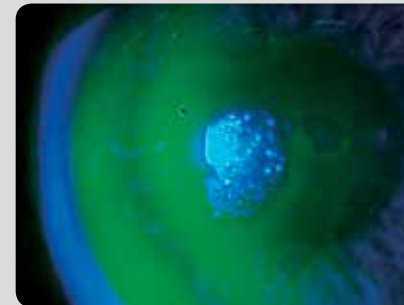
1. Have patient arrive for follow-up preferably mid-morning to mid-afternoon after applying lenses in the morning.
2. Determine if adequate central and limbal clearance is present with high magnification and optic section illumination and white light (or OCT).
3. For scleral zone evaluation, apply fluorescein to anterior lens surface and wait 15 minutes. Determine if blanching is present. Evaluate edge clearance (none/adequate/excessive) in all meridians.
4. Remove the lens and evaluate the ocular surface for ocular insult.

RECOMMENDED FOLLOW-UP SCHEDULE

When fitting a scleral lens, follow-up is essential to assure patient satisfaction and wearing success.

- Dispensing Visit - Patient should wear lenses for a minimum of 45 - 60 minutes prior to evaluation. Instruct application and removal, provide appropriate care system and discuss increasing wearing time.
- 2 weeks
- 1 month
- 3 months
- 6 months
- **1 year

It is recommended that scleral lenses be replaced on an annual basis. Throughout this follow-up schedule, Atlantis lenses can be returned to us for cleaning and, if needed, can be re-plasma treated.



Lens surface (poor wetting)



Front surface haze

Image courtesy of Buddy Russell, COMT, FCLSA, FLS
X-Cel Specialty Contacts

ATLANTIS TORIC OPTIONS

Toric Scleral Zone

To aid in aligning the scleral zone in eyes requiring different values in opposing meridians. Toric periphery designs also aid in orientation and stability when front toric optics are required.

Front Toric

Front Toric optics are available when residual astigmatism is present in the absence of lens flexure.

The Toric Scleral Zone and Front Toric options are available on all Atlantis lens designs (15.0, 16.0, 16.5, 17.0, or 17.5 diameters).



TORIC SCLERAL ZONES

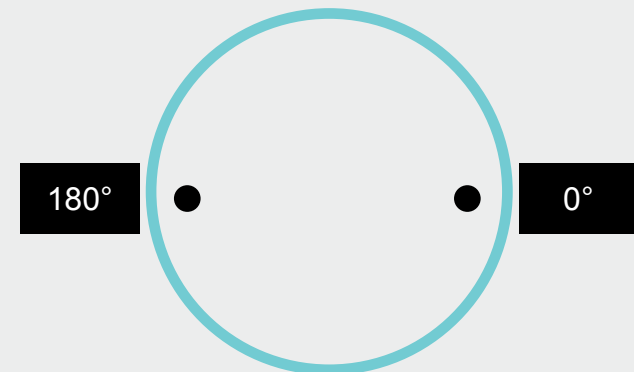
Studies have shown that as you move further away from the limbal area, the sclera often has more toricity.



With the Atlantis Toric design, you have the ability to adjust the scleral zones to better align to the toric sclera. Whether the scleral shape is with the rule, against the rule or oblique, the laser marks will align with the flatter of the two meridians.



The Toric scleral zones will be marked on the flatter meridian with 2 black laser dots.



Images on this page are courtesy of Buddy Russell, COMT, FCLSA, FSLA
X-Cel Specialty Contacts

TORIC SCLERAL ZONES

The toric scleral zones are available on any Atlantis lens that falls within the parameter range listed in the fitting guide. The toric scleral zones can be ordered in 3 different steps/factors.

TORIC FACTOR 1
(1.00D toricity)

TORIC FACTOR 2
(2.00D toricity)

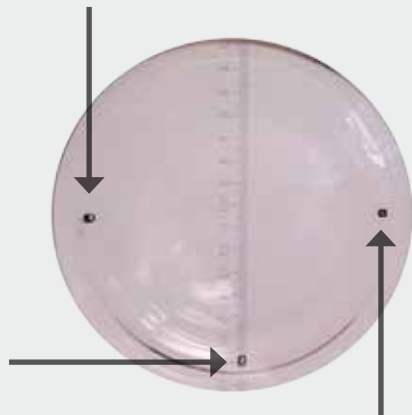
TORIC FACTOR 3
(3.00D toricity)

FRONT TORIC

Some patients may require toric optics to maximize their visual potential. This residual astigmatism may be secondary to the posterior corneal shape, lenticular or lens flexure. It is best to determine if the residual astigmatism is due to any lens flexure prior to ordering front toric optics.

The Atlantis Front Toric design is stabilized through a proprietary system that not only maintains the integrity of the original Atlantis lens through the central and limbal vault zones, but also creates a consistent, uniform scleral zone.

The Atlantis Front Toric is marked with 3 laser black dots at 3, 6, and 9 o'clock to help determine misalignment and orientation of the power.



ATLANTIS MULTIFOCAL

X-Cel Specialty Contacts is pleased to offer you and your patients a center distance scleral lens **multifocal** option. No additional diagnostic kit is needed. The only additional parameters to determine is the distance zone diameter and add power. The bi-aspheric multifocal design does not alter the fit of the lens as the sagittal depth is unchanged compared to the single vision Atlantis lens.

Three different distance zone diameters are available:
4.4 mm, 4.0 mm, 3.6 mm

Fitting the Atlantis Scleral Multifocal

1. Determine the dominant eye.
2. Determine pupil diameter under normal lighting conditions.
3. Standard distance zone is 4.0 mm. For larger pupil diameters order the 4.4mm and smaller diameters 3.6mm.
4. Order add power determined by refraction.

TROUBLESHOOTING TIPS

1. Desires better distance vision.
- change distance zone of dominant eye only to 4.4mm
2. Desires better near vision.
- change distance zone of non-dominant eye only to 3.6mm
3. Desires BEST distance vision
- use 4.4 mm OU
4. Desires BEST near vision
- use 3.6 mm OU

CONJUNCTIVAL ELEVATIONS

For those patients with a scleral elevation such as a conjunctival bleb, a pinguecula, or a pterygium, we have the ability to add a "notch" to the Atlantis lens design. The lens may be contoured around the conjunctival irregularity.

The easiest way to determine the size and location of the notch needed is to actually mark the lens while on the patient's eye. Simply use a marker to determine how far in from the lens edge and also mark the top and bottom of the desired length of the notch.



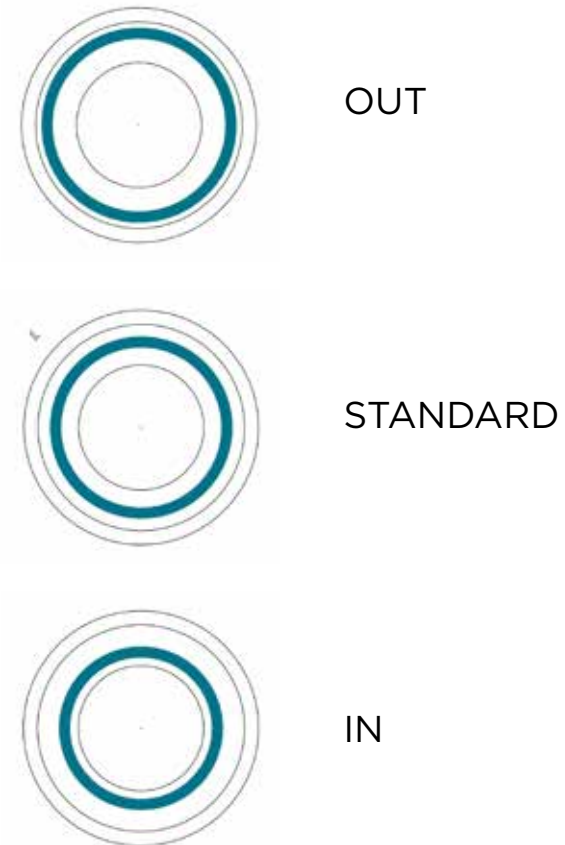
Image courtesy of Dr. Mauricio Pulido, OD - Colombia, South America

When ordering a notch with the Atlantis design, simply request the length and width in millimeters.

ATLANTIS SCLERAL 3D-VAULT™

This revolutionary enhancement allows the limbal sag apex to be adjusted in/out or up/down, optimizing mid-peripheral clearance.

This design feature allows custom enhancements for multiple corneal conditions, such as; oblate (post myopic lasik, RK, etc...) and prolate (ectasias, trauma, etc...). This design feature can be fit utilizing the standard Atlantis fit set.



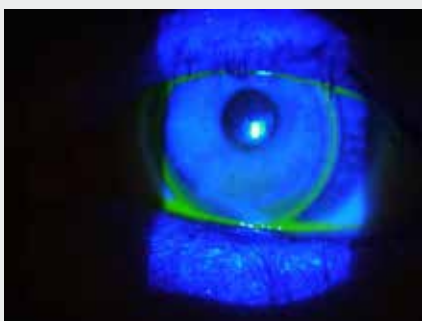
TANGIBLE HYDRA-PEG™ COATING

Atlantis Scleral lenses are now available with Tangible Hydra-PEG using Contamac Optimum materials. It is the first contact lens coating technology in the world for specialty custom contact lenses. With proper care and maintenance, it can last 1 year (the life expectancy of your scleral contact lenses).

Designed to increase wettability, surface water retention, tear break-up time, and lubricity (fewer deposits), Tangible Hydra-PEG enables Eye Care Professionals to satisfy patients over the long term and focus more on fitting patients, rather than re-fitting the same patients.



GP lens WITH Tangible Hydra-PEG coating



GP lens WITHOUT Tangible Hydra-PEG coating

OPTIMUM | tangible™
HYDRA-PEG

Source: <http://www.tangiblescience.com/>

ATLANTIS™ STANDARD DIAGNOSTIC SET

The **Atlantis** diagnostic set contains 5 base curves (A, B, C, D, E) in the 15.0mm diameter and 3 base curves (F, G, H) in the 16.5mm diameter. Each base curve has 3 scleral zones (standard, steep, and flat), along with a standard limbal vault.

Each base curve has a standard clearance (sagittal depth). Steepening the scleral zone will add 50 microns (μ) of clearance and flattening the scleral zone will decrease the clearance by 50 microns.

DIAGNOSTIC PARAMETERS

	15.0 Diameter	Sagittal Height Standard	Scleral Zone Flat	Scleral Zone Steep	Power	Center Thickness
A	40.00 (8.44)	3.394	3.344	3.444	-1.00	.31
B	42.00 (8.04)	3.681	3.631	3.731	-2.00	.30
C	44.00 (7.67)	3.998	3.948	4.048	-3.00	.28
D	46.00 (7.34)	4.349	4.299	4.399	-4.00	.27
E	48.00 (7.03)	4.754	4.704	4.804	-5.00	.26
	16.5 Diameter					
F	43.00 (7.85)	5.072	5.022	5.122	-6.00	.26
G	45.00 (7.50)	5.627	5.577	5.677	-7.00	.26
H	47.00 (7.18)	6.338	6.288	6.388	-8.00	.26

Each Set contains:

- 24 GP Atlantis Lenses
- 1 Fitting Guide
- 3 Patient Insertion/Removal Guides
- 2 Preservative-Free Single Use Saline
- 2 Small DMV's
- 2 Large DMV's
- 3 Lap Towels
- 1 Pen Light with Cobalt Blue Filter
- 3 Fluorescein Strips



ATLANTIS™ PRO DIAGNOSTIC SET

There are a total of 9 base curves labeled 1 through 9, with 1 being the lowest SAG and 9 being the highest. There are 2 diameters (17.0 and 17.5), 5 base curves in the 17.0 and 4 base curves in the 17.5. Each base curve will have 2 scleral zone values (1 flat and 2 flat). Each lens in the diagnostic set will have a toric scleral factor of 1.

The diagnostic lenses have unique identifying marks that note the edges of each of the zones. This provides increased accuracy in determining the fitting relationship of each zone. There are also 2 dots identifying the flatter of the two meridians.

DIAGNOSTIC PARAMETERS

Label #	Base Curve	Diameter	Thickness	Single Flat	Double Flat	Power
				Sag Height	Sag Height	
1	39.00 (8.65)	17.0	0.30	4.351	4.301	-2.00
2	40.00 (8.44)	17.0	0.30	4.560	4.510	-2.00
3	41.00 (8.23)	17.0	0.30	4.784	4.734	-2.00
4	42.00 (8.04)	17.0	0.30	5.023	4.973	-2.00
5	43.00 (7.85)	17.0	0.30	5.283	5.233	-2.00
6	42.00 (8.04)	17.5	0.30	5.511	5.461	-2.00
7	43.00 (7.85)	17.5	0.30	5.823	5.773	-2.00
8	44.00 (7.67)	17.5	0.30	6.173	6.123	-2.00
9	45.00 (7.50)	17.5	0.30	6.576	6.526	-2.00

Each set contains:

- 18 GP Atlantis PRO lenses
- 1 Fitting Guide
- 3 Patient Insertion/Removal Guides
- 2 Preservative-Free Single Use Saline
- 2 Small DMV's
- 2 Large DMV's
- 3 Lap Towels
- 1 Pen Light with Cobalt Blue Filter
- 3 Fluorescein Strips



ATLANTIS 3D-VAULT™ DIAGNOSTIC SET

The Atlantis 3D-Vault set consist of 10 lenses made with the same base curve, power, diameter and thickness as the standard 15.0 diameter set lenses. The 10 lens 3D-Vault set offers 2 more lenses in each of the base curves with the 15.0 diameter. 5 of the lenses have a 3D-Vault addition 1 (100 microns more vault than standard) with a flat scleral zone and the other 5 lenses have a 3D-Vault addition 2 (150 microns more vault than standard) with a 2 flat scleral zone.

DIAGNOSTIC PARAMETERS

Label #	Base Curve	Power	Diameter	Scleral Zone (SF/DF)	Vault Addition	Vault Position
AA	40.00 (8.44)	-1.00	15.0	Single Flat	1	STD
BB	42.00 (8.04)	-2.00	15.0	Single Flat	1	STD
CC	44.00 (7.67)	-3.00	15.0	Single Flat	1	STD
DD	46.00 (7.34)	-4.00	15.0	Single Flat	1	STD
EE	48.00 (7.03)	-5.00	15.0	Single Flat	1	STD
AA	40.00 (8.44)	-1.00	15.0	Double Flat	2	STD
BB	42.00 (8.04)	-2.00	15.0	Double Flat	2	STD
CC	44.00 (7.67)	-3.00	15.0	Double Flat	2	STD
DD	46.00 (7.34)	-4.00	15.0	Double Flat	2	STD
EE	48.00 (7.03)	-5.00	15.0	Double Flat	2	STD

PARAMETER AVAILABILITY

Base Curve	Diameter
6.50mm to 9.12mm	15.0
7.03mm to 9.12mm	16.0
7.18mm to 9.12mm	16.5
7.20mm to 9.12mm	17.0
7.45mm to 9.12mm	17.5
Limbal Vault Zone	Standard, 1 Steep, 2 Steep, 1 Flat, 2 Flat 3D Vault 1, 3D Vault 2, 3D Vault 3
Scleral Zone	Standard, 1 Flat, 2 Flat, 3 Flat, 1 Steep
Power	+20.00D to -20.00D in 0.25 steps
Toric Scleral Zone	Factor 1, Factor 2, Factor 3
Cylinder	-1.00D to -5.00D in 0.25 steps
Axis	Any
Multifocal Distance Zone Options	3.6, 4.0, 4.4
Multifocal Add Power	+0.75D to +4.00D
Material	Optimum Extra, Optimum Extreme Boston XO®, Boston XO2®, and Paragon HDS

Multifocal diameter options are 15.0, 16.0, and 16.5 only

*Front Toric is not available on the 3D-Vault and Multifocal designs.

All Atlantis lenses are plasma treated.

Consider Tangible Hydra-PEG coating with Optimum Extra, Optimum Extreme, or Optimum Comfort materials to enhance wettability.

A spare pair is recommended and can be purchased at a discounted price.*

Re-plasma treatment is also available.

*Spare pair offer valid within the US territory only.

NO RISK WARRANTY

90 days for credit on two exchanges per eye and cancellation.

With our **Paperless Credit Policy**, there is no need to return lenses. Simply submit on our website under Paperless Credits, fax or email your account number, invoice number, patient name, and quantity. We will process your credit and it will appear on your monthly statement.

With the paperless system, you save valuable time and more importantly, costs you incur with packaging and return postage.

IN-OFFICE CONSULTATION

As a custom soft and gas permeable specialty contact lens manufacturer, we partner with our ECP's to deliver solutions that help solve the most complicated patient's visual needs.

Our in-office consultation services are designed specifically to help guide the ECP's through the entire process of fitting patients in our lens designs **AT NO CHARGE TO YOU**.

Utilizing decades of industry experience and custom contact lens expertise, X-Cel Specialty Contacts goes beyond the norm to assist you in finding a solution for those hard to fit patients, offering unparalleled customer service, with one goal in sight - a happy patient. We are more than just a custom contact lens manufacturer. We are your partner and together, we can change lives.

#changinglives™

IN-OFFICE CONSULTATION

How does it work?

Eye Care Professional

Identify and schedule patient candidates for same day, scheduling them 45 minutes apart.

Allow time for staff training on Application & Removal (if needed)

Send patient information to field consultant

Confirm patient attendance 1-week and 1-day prior to visit

Allow time for post patient fitting meeting with field consultant

Follow-up scheduling

X-Cel Provides

Lens application & removal training for all staff

General lens and fitting process training

Provide all materials to fit all scheduled patients

Assist in the fitting process, on-eye evaluation, and final parameter recommendations

Record all patient information and order final lenses

Post fitting review and follow-up availability



NCLE CERTIFIED CONSULTANTS

X-Cel Specialty Contacts has enjoyed a reputation for our unparalleled customer service while being committed and passionate to manufacturing innovative and quality gas permeable and custom soft lenses. With our NCLE certified consultants offering over 325 years of experience to assist you with your specialty contact lens patients, we feel there is no fit too challenging. We believe your patient is our patient too so we are happy to assist you with all of your contact lens patients.

Name	Email	Phone	St
Larry Egas	legas@xcelspecialtycontacts.com	800.241.9312	GA
Pam Kosa	pkosa@xcelspecialtycontacts.com	800.241.9312	GA
Heather Durkee	hdurkee@xcelspecialtycontacts.com	800.432.3838	FL
Stephen Thomas	sthomas@xcelspecialtycontacts.com	800.432.3838	FL
Krista Mitlo	kmitlo@xcelspecialtycontacts.com	800.245.0797	PA
Bob Drake	bdrake@xcelspecialtycontacts.com	800.926.6822	MN
Linda Lee	llee@xcelspecialtycontacts.com	800.926.6822	MN
Mike Nolan	mnolan@xcelspecialtycontacts.com	800.342.2724	CA
Vicki Rippe	vrippe@xcelspecialtycontacts.com	800.426.6241	WA
Bruce Ballweg	bballweg@xcelspecialtycontacts.com	800.426.6241	WA

IN-OFFICE CONSULTATION NOTES