



Davinci Migrator for SharePoint 2010— Discover. Plan. Migrate.

Study after study has shown that the majority of IT projects fail, due primarily to their general lack of planning. Following this pattern, SharePoint migrations are often viewed as a technical activity, and not given the time or resources for proper planning. Shouldn't migration of your SharePoint environment—with its customer and business-critical data—be treated among the highest of priorities? A simple drag-and-drop migration tool, while quick and easy to use for a single site, does not provide the level of granular control or the deep environmental analysis your migration requires to ensure your project is successful. The right migration solution should provide visibility, support iterative activities, and give you complete control over your data and your schedule. The best way to successfully migrate your SharePoint environment is to discover what you're up against, plan your strategy ahead of time, and then migrate your environment on your own terms:

Discover:

You should be able to easily navigate your environment, discover your sites and content and apply the necessary rules and filters to find the data to be migrated—based on the appropriate permissions. Your tool should provide a real-time view into your environments, allowing you to identify content and see changes, on the fly.

Plan:

Migrations are phased activities. They are rarely successful the first time through due to their complexity. Your tool should support an iterative process, allowing you to sample, test, improve, and test again in waves—without forcing you to jump through hoops in the user interface, or without fear of impacting your licensing based on volume of content migrated.

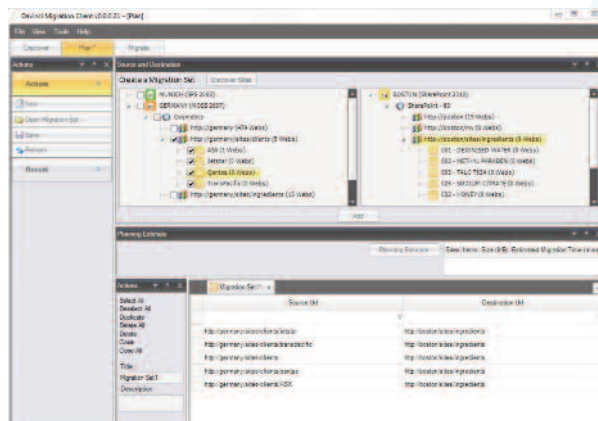
Migrate:

Ultimately, your tool should give you complete control of your migration. Move what you need, when you need to move it. It should also give you the ability to see what is happening along the way. Control is about planning, and intended results.

Axceler is the leader in migrations, giving users more visibility and control of your SharePoint migration.

Introducing Davinci Migrator

Davinci Migrator for SharePoint 2010 offers comprehensive, risk-based control when moving to the latest SharePoint platform, allowing you to discover, transform, iterate, and control your migration activities. Davinci was architected for SharePoint 2010, and manages migrations from SPS2003 and MOSS 2007 to your 2010 environment. Davinci Migrator reduces the risk, lowers the overall cost, and shortens the time it takes to complete a SharePoint 2010 migration. By helping administrators with the discovery and planning of their migrations, Davinci Migrator delivers a unique feature set to the SharePoint market by reducing the number of failed migration iterations and dramatically shortening project schedules.



DAVINCI MIGRATOR

DAVINCI MIGRATOR BENEFITS

- Discover what's wrong with your portal before you migrate
- Determine how long your migration will take, generate more realistic migration estimates
- Use reporting templates and known-risk profiles to minimize the risk of your migration, and to reduce the overall schedule
- Full fidelity migration that includes SharePoint workflows, (Nintex, out-of-the-box, and custom)
- Query your legacy portal using drag-and-drop, SQL, or a Query-by-Example interface, and create batched migrations
- Migrate in waves, based on priorities and severity of issues found
- Plan your migration on your own terms
- Put content decisions into the hands of content owners
- Perform granular or entire-site migrations from 2003 and 2007 to the new 2010 platform
- Built for speed and for control
- Support for a decade's worth of SharePoint platforms

"Davinci Migrator was our company's choice for migration of documents with large amounts of metadata from SharePoint 2003-2007 environments to a new SharePoint 2010 Farm due to its Discover-Plan-Migrate philosophy (including querying capabilities), access-anywhere web interface, metadata mapping, and batch management of migration sets. Davinci Migrator was the clear choice to quickly deprecate old environments into SharePoint 2010, enabling our knowledge workers to begin collaborating at a higher level even faster."

**Craig Pilkenton,
SharePoint Engineer
Financial Partners, Inc."**

Axceler enables enterprises to simplify, optimize, and secure their collaboration platforms, and has delivered award-winning administration products since 1994. For Microsoft SharePoint, Axceler offers ControlPoint and Davinci Migrator. ControlPoint is the best way to get control over a SharePoint environment, giving SharePoint professionals the ability to manage permissions, copy sites, analyze activity, and much more. Davinci Migrator is a best of breed migration solution for organizations upgrading SharePoint 2003 and 2007 to SharePoint 2010.



Corporate Headquarters

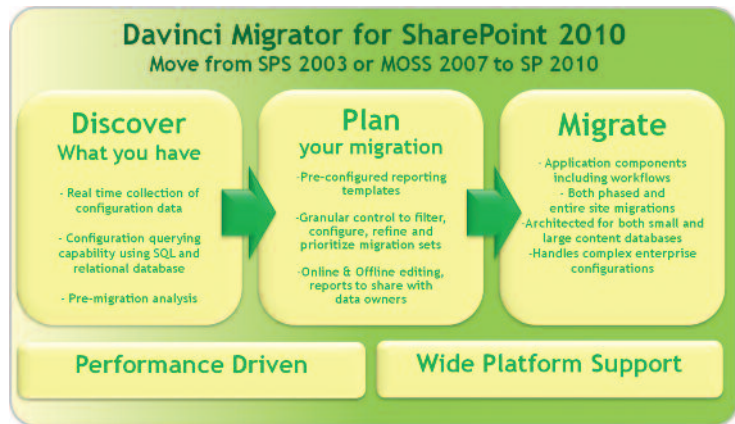
600 UNICORN PARK DRIVE
WOBURN, MA 01801
TOLL FREE: 866.499.7092
TEL: 781.995.0063
FAX: 781.279.3150

European Headquarters

7 SWALLOW PLACE
LONDON
W1B 2AG
UNITED KINGDOM
TEL: +44 (0)20.7850.0199
FAX: +44 (0)20.7850.0270

Asia Pacific Headquarters

LEVEL 8, 100 WALKER STREET
NORTH SYDNEY
NSW 2060
AUSTRALIA
TEL: +61 439.644.341
www.axceler.com
questions@axceler.com



Davinci Migrator provides complete control over the migration, enabling users to plan and schedule on their own terms. By supplying migration estimates, reporting templates, and a powerful scheduling engine, Davinci helps users build more realistic migration plans. Davinci also lets administrators put site and content migration decisions into the hands of the end user managers or professionals responsible for the content, online or offline, using Microsoft Excel.

Capabilities and Features

Discover

- Real-time collection of important configuration data, critical for discovering and planning migrations with known-risk profiles and trimming
- A robust configuration querying capability using full, industry standard SQL and a relational database, as well as an integrated Query-By-Example (QBE) interface
- Detailed pre-migration analysis and rules engine, allowing users to follow best practices, identify issues during planning, rank them by severity and recommend actions before moving forward

Plan

- Pre-configured reporting templates, based on best practices, to help streamline job creation
- Granular control, with the ability to filter, configure and refine migration sets, allows for detailed staging and planning
- Online and offline editing, data transformation using Excel spreadsheets, giving some control over data into the hands of the users who know the data

Migrate

- A powerful migration engine, built for both speed and for control, supporting both granular and entire-site migrations from SharePoint 2003 and 2007 to the new SharePoint 2010 platform
- An optimized architecture for large content databases, complex enterprise configurations and consolidation of multiple platforms, with one or many SharePoint administrators per farm
- Support for migrating in waves, based on user-defined timetables, priorities and severity of issues found, which reduces team and resource impact

System Requirements

Supports 64 bit environments. Supports Windows Server 2003 and 2008. Davinci is remotely installed on the front end server—you must have administrative privileges on the installation server (SharePoint 2010) as well as any remotely managed servers (2003 or 2007)