

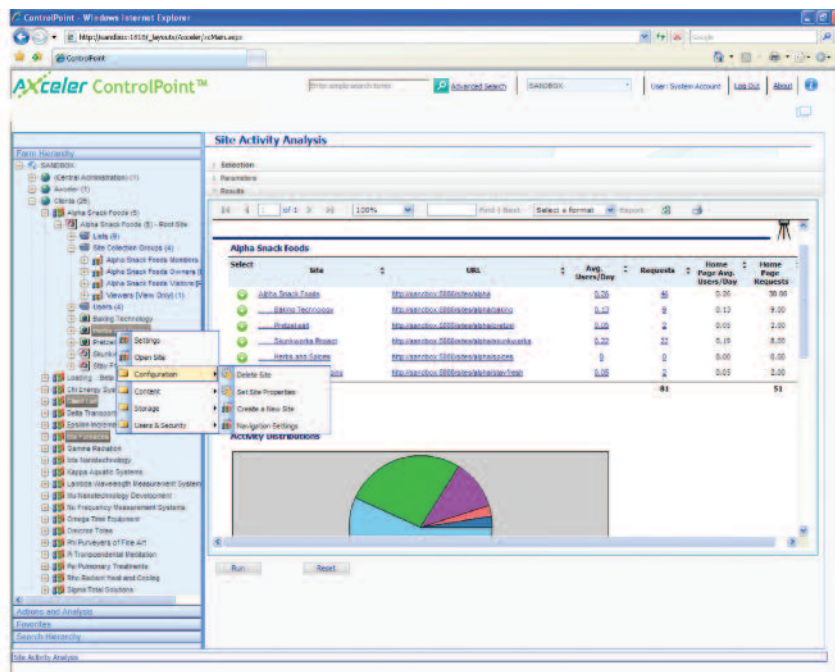


## ControlPoint—Explore, Protect, Analyze and Control

IT departments are embracing Microsoft SharePoint™ as a way to solve a host of business collaboration challenges. However, SharePoint farms can quickly become difficult to manage as sites proliferate and become a nightmare for administrators. Some of the most common challenges administrators face today include: poorly managed permissions leading to security gaps, SharePoint deployments that quickly become tedious and time-consuming to manage, limited or no view into the status of the SharePoint environment, uncontrolled growth of sites and site collections, limited visibility into user activity, depleted or poorly utilized SharePoint resources, and no ability to manage the increasing set of site administrators.

### Introducing Axceler ControlPoint for SharePoint 2007 and SharePoint 2010

ControlPoint gives you the ability to explore, protect, analyze and control SharePoint by giving you full visibility into your SharePoint environment. ControlPoint gives you powerful control with comprehensive permissions management, move and copy content capabilities, in-depth activity and storage analysis, and the ability to control SharePoint usage with policies. With ControlPoint, you can enforce SharePoint governance automatically, govern SharePoint environments both on premise and in the cloud, make smarter management decisions, improve the focus of your SharePoint team, avoid security breaches and their associated costs, increase end-user adoption, and reduce the demands on your SharePoint infrastructure and the overall costs of SharePoint ownership.



#### CONTROLPOINT BENEFITS

- Enforces SharePoint governance automatically
- Enables smarter SharePoint decisions
- Improves the focus and agility of SharePoint management teams
- Boosts SharePoint's value
- Avoids security breaches and their associated costs
- Increases end-user adoption
- Reduces demands on your SharePoint infrastructure

*“With Axceler ControlPoint, I know about any changes in my environment immediately,” said Karen Floyd, City of Charlotte, NC. “Now I can react appropriately before problems can fester.”*

*“The ability to move sites is critical for us,” said Mike Herry, Twynham Schools. “We often move content across departments or from test to production environments, so this will save us a huge amount of SharePoint administration time.”*

Axceler enables enterprises to simplify, optimize, and secure their collaborative platforms and has delivered award-winning administration products since 1994. For Microsoft SharePoint, Axceler offers ControlPoint—the best way to get control over a SharePoint environment. ControlPoint gives SharePoint professionals the ability to manage permissions, copy sites, analyze activity and much more. Axceler also has best of breed migration solutions for organizations upgrading SharePoint 2003 and 2007 to SharePoint 2010.

**Microsoft**  
**GOLD CERTIFIED**  
Partner



Microsoft  
**SharePoint 2010**



#### Corporate Headquarters

600 UNICORN PARK DRIVE  
WOBURN, MA 01801  
TOLL FREE: 866.499.7092  
TEL: 781.995.0063  
FAX: 781.279.3150

#### European Headquarters

7 SWALLOW PLACE  
LONDON  
W1B 2AG  
UNITED KINGDOM  
TEL: +44 (0)20.7850.0199  
FAX: +44 (0)20.7850.0270

#### Asia Pacific Headquarters

LEVEL 8, 100 WALKER STREET  
NORTH SYDNEY  
NSW 2060  
AUSTRALIA  
TEL: +61 439.644.341  
www.axceler.com  
questions@axceler.com

## Capabilities & Features

### SharePoint Governance Automation

- Prevent user actions that do not comply with policies such as enforcing site level quotas and preventing site and document deletion
- Alerts to critical changes in your environment, including permissions

### Manage Security at Farm, Site and User Level

- Comprehensive user analysis
- Analyze security at any scope within your farm
- Manage user permissions (set, delete, reassign, duplicate, inheritance, backup, & restore)
- Recommendations for permissions cleanup
- Manage site permissions (duplicate, backup, restore)
- Manage SharePoint groups
- Support for claims based authentication
- Clean up users no longer in Active Directory but still in SharePoint

### SharePoint Analysis and Reporting

- Dashboard reporting capabilities to let anyone from business owners to CXOs evaluate KPIs
- Interactive analysis for flexible, comprehensive visibility, including custom reporting, and tabbed and graphical reports
- Powerful drill down or drill across capabilities for targeted analyses
- Compare historic patterns and trends to better plan out your future requirements
- In-depth analysis and control of SharePoint Audit and Change logs

### Analyze Usage and Activity

- Analyze activity down to the site, page, or document level
- Identify who accesses which documents
- Isolate sites that are no longer needed and delete them
- Identify duplicate files
- Report on Workflow definitions and instances
- Find sites with the most or least activity

### Manage Content and Storage

- Monitor and track the number and size of sites for better planning
- Analyze web part usage to determine which sites are using which web parts
- Management of SharePoint features, alerts
- Analysis of content types and Managed Meta Data
- Ensure consistent branding and behavior across sites and lists

### Move or Copy Content within Farms or Across Farms

- Move site collections, sites, lists, libraries, folders, and items
- Quickly go from test environment to production environment
- Reorganize your content

## Smarter Infrastructure

### Efficient SharePoint Management

- Reduce demands on the SharePoint infrastructure
- Centralized location to control multiple sites, site collections, and web applications
- Perform discovery/search functions across your SharePoint farm for complete visibility

### Find it and Fix it

- Analyze and then act immediately on results
- Avoid losing context by switching between modules

### Security Trimmed

- Leverage SharePoint Security model
- No additional security infrastructure to manage

### Distributed SharePoint Management

- Powerful tool for all SharePoint administrators (Farm, site collection, site)
- Scope and functionality trimmed to meet the needs of Farm, Site Collection and Site Admins
- Integrates with Site Settings for site administrators
- Integrates ControlPoint reporting into any web page providing access from anywhere for anyone
- Expose critical information in dashboards

### Integrated with SharePoint

- Installs into your farm as a browser based web application
- Easily navigate to any site, site collection, or web application from within ControlPoint
- Access native SharePoint administrative (Central Admin or Site Settings) capabilities from within ControlPoint

## System Requirements

ControlPoint runs within your SharePoint environment on systems that meet the following requirements: Windows Server 2003 or 2008, SharePoint 2010 (Server or Foundation) or SharePoint 2007 (MOSS is optional, and enables richer activity reports than WSS alone), and SQL Server 2005 or 2008. Supports IE 7 & 8, and for SharePoint 2010, Firefox 3