



STUDY ABROAD SUMMER/SHORT-TERM

2020



ARGENTINA • CHILE • CHINA • COSTA RICA • CROATIA • CUBA • CZECH REPUBLIC • ECUADOR • ENGLAND • FRANCE
GERMANY • IRELAND • ITALY • NEW ZEALAND • POLAND • PORTUGAL • SCOTLAND • SPAIN • UNITED ARAB EMIRATES



APIABROAD.COM

LEARNING TRANSFORMED. LIFE TRANSFORMING.

API INCLUDES MORE. SEE FOR YOURSELF RIGHT HERE!

THE DIFFERENCE IS IN THE DETAILS.

*Very important to ask about these items as other providers often do not include or charge an additional fee for them.

API PROGRAMS INCLUDE THE FOLLOWING IN THE PROGRAM PRICE:		DOES STUDY ABROAD PROVIDER #2 INCLUDE?	DOES STUDY ABROAD PROVIDER #3 INCLUDE?	DOES STUDY ABROAD PROVIDER #4 INCLUDE?
Pre-Departure Advising and Personal Service	YES			
Pre-Departure Online Resources and Orientation Materials	YES			
*Student Visa Support and Processing (IN MOST LOCATIONS)	YES			
Scholarship Opportunities API AWARDS OVER \$500,000 PER YEAR TO HELP STUDENTS	YES			
Airport Pick-Up	YES			
On-Site Orientation	YES			
Tuition	YES			
Quality Housing <small>* Because of the range of housing options in Australia and New Zealand, housing costs have been separated out and are not included in the program fees for these locations.</small>	YES			
Meals and Laundry Service (IN MANY LOCATIONS)	YES			
On-Site Tutoring and Academic Support	YES			
Online and On-Site Language & Culture Resources	YES			
Computer and Internet Access	YES			
Mobile Phone/Calling Plan	YES			

API PROGRAMS INCLUDE THE FOLLOWING IN THE PROGRAM PRICE:		DOES STUDY ABROAD PROVIDER #2 INCLUDE?	DOES STUDY ABROAD PROVIDER #3 INCLUDE?	DOES STUDY ABROAD PROVIDER #4 INCLUDE?
*Comprehensive Medical and Life Insurance	YES			
24-Hour Emergency Assistance	YES			
Excursions <small>OVERNIGHT LODGING, ENTRANCE FEES AND TRANSPORTATION ARE ALL INCLUDED WITH API PROGRAMS! WHEN COMPARING PROGRAMS, MAKE SURE ALL EXCURSIONS ARE INCLUDED IN PRICE!</small>	YES			
*International Excursions (IN MANY LOCATIONS) <small>OVERNIGHT LODGING, ENTRANCE FEES AND TRANSPORTATION ARE INCLUDED</small>	YES			
*Round-Trip Airfare or High Speed Train on Long Distance Excursions	YES			
*Full-Time On-Site Resident Directors	YES			
*On-Site API Centers (IN MANY LOCATIONS)	YES			
Social and Cultural Activities <small>COOKING CLASSES, MOVIE NIGHTS, MUSIC EVENTS, SCAVENGER HUNTS AND MORE</small>	YES			
*Organized Volunteer Opportunities	YES			
Welcome and Farewell Group Events	YES			
Peer Mentors/Alumni Ambassadors	YES			
Social Networking/Pre-Departure Connections	YES			
Re-Entry Materials and Support	YES			
Transcript - Official and Accredited	YES			
Alumni Network and Development Opportunities	YES			
TOTAL PROGRAM COST				

“THIS HAS BEEN THE MOST INCREDIBLE EXPERIENCE OF MY LIFE and I would not have enjoyed my time nearly as much if it weren’t for all that API has done for me! From the excursions, to the help with academics and housing, to the kind staff, I can’t believe I got so lucky in picking the best study abroad program.”

- Bailey J. / Saint Michael’s College



WELCOME TO THE BIG AND BEAUTIFUL WORLD OF API!

DISCOVER API	PAGE
API GIVES YOU MORE FOR THE MONEY	2
MEET THE FOUNDING MAMAS	4
THE API DIFFERENCE	5
WHAT'S INCLUDED?	7
HOW TO APPLY	11
SCHOLARSHIPS AND MONEY	12
GET SOCIAL WITH API	19
THE API GLOBAL FAMILY	20
API PARTNER INSTITUTIONS	96
API PROGRAMS BY CLASS STANDING	98
API INTERNSHIP PROGRAMS	102

API PROGRAM LOCATIONS	PAGE
ASIA	
CHINA SHANGHAI	24
UNITED ARAB EMIRATES SHARJAH	26
EUROPE	
CROATIA DUBROVNIK	30
CZECH REPUBLIC PRAGUE	32
ENGLAND HARLAXTON • LONDON	34
FRANCE CAEN • GRENOBLE • PARIS	38
GERMANY BERLIN	45
IRELAND CORK • DUBLIN • GALWAY • LIMERICK	47
ITALY FLORENCE • ROME • SYRACUSE • TAORMINA • TUSCANIA	52
POLAND KRAKÓW	61
PORTUGAL LISBON	63
SCOTLAND EDINBURGH • STIRLING	65
SPAIN BARCELONA • GRANADA • MADRID SALAMANCA • SEVILLE	68
LATIN AMERICA	
ARGENTINA BUENOS AIRES	78
CHILE SANTIAGO • VALPARAÍSO	81
COSTA RICA SAN JOAQUÍN DE FLORES • SAN JOSÉ	84
CUBA HAVANA	88
ECUADOR QUITO	90
SOUTH PACIFIC	
NEW ZEALAND AUCKLAND • WELLINGTON	93

**API GIVES YOU THE MOST
INCLUSIVE AND HIGHEST
QUALITY STUDY ABROAD
EXPERIENCE FOR THE PRICE.**



A WEALTH OF OPTIONS

- 51 cities in 23 countries
- From two weeks to a full year
- Study almost any subject on Earth

SUPERIOR STUDENT SERVICES

- One-on-one pre-departure assistance
- Local, on-site, highly qualified, trained and experienced, English-speaking resident directors
- 24/7 Medical and emergency assistance

COMMITMENT TO EXCEPTIONAL VALUE

- API programs include more for the money
 - TUITION AND HOUSING
 - OVERNIGHT AND DAY EXCURSIONS
 - SOCIAL AND CULTURAL EVENTS
 - ACADEMIC AND CULTURAL SUPPORT
 - MEDICAL AND LIFE INSURANCE
 - AND SO MUCH MORE!

FOCUS ON ACADEMIC EXCELLENCE

- All API students take courses at a partner university or institution based in the host country
- API university and institutional partners are either fully-accredited foreign universities or institutes with U.S. schools of record

OVER 96%

OF FORMER API STUDENTS
SAY THAT THEIR API STUDY
ABROAD EXPERIENCE
EXCEEDED OR MET
THEIR EXPECTATIONS



MEET **THE FOUNDING MAMAS** OF API



API FOUNDERS - BRITTANY NORMAN, JULIE LEITMAN, SHARON FOERSTER, JENNIFER ALLEN

“At API, we are committed to breaking down the barriers between people of different cultures as a force for good in the world.”

- Jennifer Allen / API Founding Mama

When the four Founding Mamas established API together more than 20 years ago, they dreamed of creating high-quality, safe, life-changing study abroad programs they would feel good sending their own kids on. With dedication, hard work, and a lot of love, their dream became reality. Thousands and thousands of students have chosen API to support them on their own life-changing study abroad experiences, with the Four Mamas cheering them on every step of the way.

It is a source of pride to API that the majority of Resident Directors who helped launch API’s first programs abroad remain with us today. We continue to hire personnel stateside and abroad who are deeply committed to the personal growth and safety of API participants and who demonstrate integrity in all that they do. API hires personnel that the Founding Mamas know will care for our students on-site as if they were their own children. All of API’s four original founders have sent their own children on an API program to learn about and enjoy the world!

EXPERIENCE THE **API DIFFERENCE**



A WARM WELCOME UPON ARRIVAL

Friendly API Resident Directors/Coordinators meet students upon arrival at the airport. Students also take part in a group orientation, including a welcome lunch or dinner, so they can get to know their new friends as well as the API Resident Director/Coordinator.

INTERNATIONAL AND DOMESTIC EXCURSIONS

All API programs include excursions that introduce you to wonderful destinations in your host country. Many of our programs also include international excursions. Wherever possible, API excursions offer more comfort and safer travel by using private means of transportation, including chartered buses, airlines and high-speed trains.

SUPPORT WHEN NEEDED

API takes pride in being available to students and their families during all phases of the study abroad experience- pre-departure, on-site and re-entry. Whether it's answering a simple question, or supporting students during a local or personal emergency, API U.S. and international team members are available to respond to your needs 24/7.

COMFORTABLE, SAFE AND WELL-LOCATED HOUSING

API provides quality housing that is safe and located near the university or city centers. Local API directors carefully screen all housing options prior to student arrival. Many programs offer multiple types of housing (apartments, local host families and/or dormitories) to appeal to every student interest.

THE API **MISSION**

THE MISSION OF API IS TO DESIGN AND DELIVER INTERNATIONAL EXPERIENCES THAT INSPIRE LEARNING AND ENRICH STUDENTS, PARTNERS AND COMMUNITIES.



API **CORE VALUES**

PURSUE YOUR PASSION

We believe doing what you love can change the world.

INNOVATIVE SPIRIT

We bring creativity, a collaborative spirit and the resources to develop transformative and accessible experiences for students.

INDIVIDUALITY AND DIVERSITY

We foster respect, empathy and perspective.

LEARNING AND PERSONAL GROWTH

We promote personal growth and learning from the world at large.

SUPERIOR SERVICE, SAFETY AND QUALITY

We deliver exceptional experiences with student well-being as our highest priority.

HIGHEST ETHICS AND INTEGRITY

We are committed to honest, ethical practices and adherence to social and governmental norms wherever we operate.

API does not discriminate against any individual based on ethnicity, nationality, ancestry, race, sex, gender identity, creed, age, marital status, sexual orientation, or disability in its admissions decisions, program activities or employment practices.

THERE IS SO MUCH INCLUDED WITH API PROGRAMS!

- Pre-departure advising
- Student visa support
- Orientation materials and resources
- Opportunities to speak with API alumni
- API Learning and Engagement Badge Program
- Airport reception
- On-site orientation
- On-site Resident Directors
- Quality housing near the host university or city center
- 24-hour emergency assistance
- Tuition
- Overnight excursions
- International excursions
IN VARIOUS LOCATIONS
- Volunteer opportunities
- On-site tutoring and academic support
- Welcome and farewell group events
- Comprehensive medical and life insurance
- Social and cultural activities
- Scholarship opportunities
- Transcript from accredited institution
- Extensive alumni network
- And more!



IT'S ALL IN **THE DETAILS**

ADVISING

API staff members happily guide students through the administrative processes of the pre-departure phase of study abroad. Students and their families may contact API staff as often as needed with questions about academics, on-site logistics, visa procedures, housing, safety concerns and anything else. API staff members, in turn, are frequently in touch with students regarding program updates, essential travel tips and recommendations for having a successful experience abroad. API staff can also connect students with API alumni who welcome the opportunity to share their API experiences with future students.

ORIENTATION MATERIALS AND RESOURCES

All API students receive comprehensive orientation information to help them prepare for their study abroad session. API orientation materials include information on logistical details, cultural differences, what students can expect at their host university, health and safety concerns, travel tips and more. API students also have access to language diagnostic exams and language reviews (in some sites). Additionally, in certain locations, API offers pre-departure orientation sessions for students and their families on the home campus.

RESIDENT DIRECTORS/COORDINATORS

API has highly qualified, trained and experienced English-speaking, Resident Directors/Coordinators in every site who are available to students throughout their session abroad. Most Resident Directors/Coordinators are locals from the host country in which students will be studying and all are ready to provide practical information and insight into the host culture. Resident Directors/Coordinators greet students at the airport, introduce students to the ways of life in their host country, help students to register at the host institution and support students throughout their stay. They are also available in case of any personal emergency and are ready to implement the API emergency response plans, if needed.

AIRPORT RECEPTION

API students are met at the airport and welcomed to their new home by API on-site staff on the program start date.

ON-SITE ORIENTATION

The on-site orientation takes place during the first week of a student's stay. API orientations include city tours as well as practical information about life in the host city, including transportation, safety and local culture. The orientation is designed to minimize adjustment difficulties upon arrival and gives students an opportunity to get to know other participants.

EXCURSIONS

Students have the opportunity to broaden their classroom education through several organized excursions, which are included in the price of the program. (In many locations, international excursions are included!) Overnight lodging, breakfast, entrance fees and transportation to and from the excursion locations are included. Excursions are subject to change depending on availability, weather and other factors.

SOCIAL AND CULTURAL ACTIVITIES

Students are offered monthly API-sponsored social and cultural activities, including outings to movies, concerts, cultural tours, theater performances, museums, outdoor activities, cooking classes and more. All entrance fees are covered by API. Students also enjoy both welcome and farewell group meals.



VOLUNTEER OPPORTUNITIES

Organized by API Resident Directors/Coordinators in many locations, the API Gives Back Project may consist of an ongoing volunteer opportunity or a one-day commitment. The goal of the project is to help API students express their thanks for the welcome they received from the local community. Students may also choose to add-on a volunteer program to the beginning or end of their study abroad experience in some locations.

MEDICAL AND LIFE INSURANCE

The health and safety of our participants is our number one priority. Medical and life insurance is provided for all students during the program term. The coverage includes medical evacuation and repatriation, as well as 24-hour support for medical issues. Our insurance plan is designed to help cover the care students need to get better.

TUITION

All programs include a fixed number of credits per term as part of the standard fee. The number of credits that a student can earn each session is detailed on each program page. API encourages students to meet with their advisors to get courses and credits approved prior to departure.

HOUSING

Housing is included in the program fee.* Depending on the host city, students may choose from various housing options, including host families, apartments, or student dormitories. Students can request single rooms on their housing form for an additional cost, although some sites may have guaranteed single rooms as part of the program fee. A \$275 security deposit is due by the final payment deadline for all programs. A fee of \$95 will be retained from all security deposits to cover standard cleaning fees and general maintenance fees, including minor repairs and standard touch-up painting. The remaining \$180 is refundable provided that: 1) no additional fees are assessed for on-site incidentals, damages, or excessive utility usage; and 2) the API program fee has been paid in full.

Housing for most academic year students during the period between the fall and spring semesters is not included in the API program fee. Students can take advantage of this time to return home to the U.S. or to travel independently. In most cases, API can arrange between-term housing for students in their host city for an additional fee. Refer to the city information sections or the API website for more specific housing information by location.

**Due to the range of housing options in Australia and New Zealand, housing costs have been separated out from the program fees and are billed separately once the student's housing placement has been confirmed. Please contact the API office at (800) 844-4124 for more information.*

API LEARNING AND ENGAGEMENT DIGITAL BADGE PROGRAM

API offers participants the opportunity to maximize their time abroad by earning digital badges that reflect activities completed before, during and after a participant's international experience. Digital badges can be earned in the areas of Career Development, Community Engagement, Intercultural Learning, Leadership and Mindful Travel. Digital badges can be displayed on résumés, e-portfolios, personal branding and online web presence. Badges are an opportunity for students to show their college or university, potential employers and their community how they made the most of their experience abroad.

Interested in earning a badge? E-mail badges@apiabroad.com for more information!

TRANSCRIPT

Upon completion of the academic session, an official transcript from an accredited institution with a letter of translation (if necessary) is sent to each student's home institution. API encourages students to discuss their academic choices with home institution advisors prior to departure to determine how credits reflected on the transcript might be transferred toward their degree plan.

EXPERIENTIAL PROGRAMS

Students who are interested in continuing their international experience may choose to participate in an intern abroad program through API. Please call (800) 844-4124 or visit apiabroad.com for details.

ALUMNI NETWORK AND PROFESSIONAL DEVELOPMENT OPPORTUNITIES

Returning students have the opportunity to continue to be engaged with API through a variety of alumni opportunities. API continues to support participants post-experience through the API alumni network, job postings and items of interest in the API Alumni Facebook and LinkedIn groups and through **API's Global Leadership Academy**. The Global Leadership Academy offers API alumni the opportunity to build core competencies of global leadership in a dynamic and creative atmosphere. The program helps participants develop skills to share their experience in their community, on campus and in job interviews. Students host collaborative events to share their international story and learn to integrate their international experience into their chosen career path.



YOU CAN DO IT.

EARN CREDIT

Take classes that transfer to your major and graduate on time.

STRENGTHEN YOUR RÉSUMÉ AND DEVELOP YOUR CAREER

Studying and living abroad give you life skills that will help you further down the line when looking for a job.

LEARN A NEW LANGUAGE

The best way to learn a new language is to immerse yourself in a new language. You can take part in language programs that are as short as three weeks or up to a full year.

MAKE IT AFFORDABLE

API awards over \$500,000 annually in scholarships and there are programs that fit nearly everyone's budget.

ENHANCE YOUR LIFE

Living in another country will give you a new perspective on life and the world. You'll become a citizen of the world and help to make it a better place for all.

MAKE FRIENDS FROM ALL OVER THE WORLD

Your life abroad will be filled with people from all over the United States as well as the world. Who knows who will become your friends for life!

HERE'S HOW TO APPLY

STEP 1

Meet with your study abroad and/or academic advisors to determine how study abroad works at your home university.

STEP 2

Narrow down the choices by focusing on programs that meet your academic needs and goals. Decide when you want to go.

THINGS TO CONSIDER WHEN CHOOSING AN API PROGRAM

- Language of instruction
 - Course offerings
 - Big city or small town
 - Cost of program
 - Location
 - Excursions
 - Duration
 - Housing
 - Special features
-

STEP 3

Verify admission requirements and program deadlines.

STEP 4

Go to apiabroad.com to start your application. Submit supplementary application documents to API.

STEP 5

Apply for or renew a passport. Start researching flights and your host country. Apply for API scholarships.

WHAT HAPPENS NEXT?

CONTINUOUS ACCESS TO APPLICATION

API encourages students to visit their [@api](#) online account frequently to determine if there are any supplementary materials that must be submitted to complete the application.

PROMPT NOTIFICATION OF ACCEPTANCE

API Program Managers/Coordinators promptly contact students once a completed application has been received. Accepted students are notified by phone and receive an acceptance e-mail with detailed post-acceptance instructions and materials.



LET'S TALK **SCHOLARSHIPS** AND **MONEY**



Financing your API program is one of the most important parts of going abroad, but it can also be one of the most stressful. API encourages students to start planning EARLY.

API also urges participants to read our financial policies and discuss these with their parents and/or study abroad advisors before applying. Payment policies and deadlines can be found on the API website.

“API did an awesome job of providing me the information I needed for funding my study abroad experience. I took my API program information to the financial aid office and I qualified for more financial aid than I did before. API’s financial aid team helped make my dream study abroad experience possible!”

- Beth K. / University of California, Los Angeles

SCHOLARSHIP DEADLINES

FALL/YEAR JUNE 10

SPRING SEMESTER/WINTER QUARTER OCTOBER 15

SPRING QUARTER DECEMBER 15

SUMMER APRIL 1

SCHOLARSHIP REQUIREMENTS

- Student must have a cumulative G.P.A. of 3.0 or higher (2.75 for First Gen and STEM).
- Student must have applied and been accepted to an API program.
- Scholarship recipients will be required to submit one blog post during or immediately following their study or intern abroad program. The submission must comply with API's policies regarding language and subject matter, and API will retain the rights to edit and publish this post on its social media, website and API advising materials, as appropriate.

API SCHOLARSHIPS

API awards over \$500,000 annually in both need and merit-based scholarships. API scholarships range from \$250-\$1,000, and include the following opportunities:

API Regional Scholarship

API Diversity Scholarship

API Community Or Technical
College Scholarship

API First Generation Scholarship

API S.T.E.M. Scholarship

API Student Athlete Scholarship

Benjamin A. Gilman Award

API/John Cabot University

Early Bird Scholarship

API/John Cabot University

Diversity Scholarship

API/John Cabot University

Summer Engineering Scholarship

Macquarie University Scholarship

Macquarie Student
Representative Scholarship

API/Maynooth University

Summer Scholarship

API/University Of The Arts

London Scholarship

API/AUT University Scholarship

API/University Of Auckland Scholarship

API/Massey University Scholarship

Victoria University Of Wellington Scholarship

Trinity College Dublin Scholarship

VISIT **APIABROAD.COM** FOR DETAILS ABOUT SCHOLARSHIP REQUIREMENTS AND INFORMATION ON ADDITIONAL FUNDING RESOURCES.



API AWARDS OVER \$500,000 IN SCHOLARSHIPS ANNUALLY!

OVER 64%

OF API PROGRAMS
ARE UNDER \$13,000



GET GOING **FOR LESS**

SEMESTER PROGRAMS UNDER \$13,000

ARGENTINA

BUENOS AIRES

Universidad de Belgrano
Universidad de Salvador
Universidad Torcuato di Tella

AUSTRALIA

SYDNEY

Study Abroad and Internship Program

CHILE

SANTIAGO

Universidad Alberto Hurtado
Study Abroad and Internship Program

VALPARAÍSO

Pontificia Universidad Católica de Valparaíso
Universidad Técnica Federico Santa María

VIÑA DEL MAR

Universidad Adolfo Ibáñez

CHINA

SHANGHAI

East China Normal University

COSTA RICA

SAN JOAQUÍN DE FLORES

Instituto San Joaquín de Flores

SAN JOSÉ

Universidad Veritas

CZECH REPUBLIC

PRAGUE

Charles University
VSE University of Economics, Prague

FRANCE

CAEN

Université de Caen, Basse-Normandie

GRENOBLE

Université Grenoble Alpes (CUEF)

PARIS

Cours de Civilisation Française de la Sorbonne

HUNGARY

BUDAPEST

Corvinus University of Budapest

ICELAND

REYKJAVÍK

Reykjavík University

IRELAND

DUBLIN

Study Abroad and Internship Program

POLAND

KRAKÓW

Jagiellonian University of Kraków

SPAIN

BARCELONA

Universitat Autònoma de Barcelona
Universitat de Barcelona
Universitat Pompeu Fabra
Study Abroad and Internship Program

BILBAO

Universidad del País Vasco

CÁDIZ

Universidad de Cádiz

GRANADA

Universidad de Granada

MADRID

Universidad Complutense de Madrid

SALAMANCA

Universidad de Salamanca

SEVILLE

Universidad de Sevilla
Universidad Pablo de Olavide

SHORT-TERM STUDY ABROAD PROGRAMS UNDER \$6,000

CHILE

SANTIAGO

Universidad Alberto
Hurtado

COSTA RICA

SAN JOSÉ

ICDS

CROATIA

DUBROVNIK

Libertas Int'l Univ.

CUBA

HAVANA

Universidad de
la Habana

CZECH REPUBLIC

PRAGUE

Charles University

FRANCE

GRENOBLE

Université Grenoble
Alpes (CUEF)

PARIS

Institut Catholique
de Paris

ITALY

FLORENCE

Lorenzo de' Medici

SYRACUSE

Syracuse Academy

PORTUGAL

LISBON

Instituto Universitário
de Lisboa

SPAIN

MADRID

Universidad Antonio
de Nebrija

SALAMANCA

Universidad de
Salamanca

SEVILLE

Universidad de Sevilla

INTERNSHIP PROGRAMS UNDER \$6,000

ARGENTINA

BUENOS AIRES

AUSTRALIA

BRISBANE

GOLD COAST

MELBOURNE

SYDNEY

CHILE

SANTIAGO

NEW ZEALAND

DUNEDIN

PORTUGAL

LISBON

SPAIN

BARCELONA

MADRID

SEVILLE

SUMMER PROGRAMS UNDER \$7,000

ARGENTINA

BUENOS AIRES

Universidad de Belgrano

CHILE

VALPARAÍSO

Pontificia Universidad Católica de Valparaíso

CHINA

SHANGHAI

East China Normal University

COSTA RICA

SAN JOAQUÍN DE FLORES

Instituto San Joaquín de Flores

SAN JOSÉ

International Center for Development Studies
Universidad Veritas

CUBA

HAVANA

Universidad de la Habana

CZECH REPUBLIC

PRAGUE

Charles University

VSE University of Economics, Prague

ENGLAND

HARLAXTON

Harlaxton College

LONDON

London School of Economics / Univ. College London

Univ. of the Arts London / Univ. of Westminster

FRANCE

CAEN

Université de Caen, Basse-Normandie

GRENOBLE

Université Grenoble Alpes (CUEF)

PARIS

Cours de Civilisation Française de la Sorbonne

Institut Catholique de Paris

Parsons Paris - The New School

GERMANY

BERLIN

Humboldt-Universität zu Berlin

IRELAND

CORK

University College Cork

DUBLIN

Maynooth University

GALWAY

National Univ. of Ireland, Galway

LIMERICK

University of Limerick

ITALY

FLORENCE / ROME / TUSCANIA

Lorenzo de' Medici THE ITALIAN INTERNATIONAL INSTITUTE

SYRACUSE

Syracuse Academy

TAORMINA

Babilonia CENTER FOR ITALIAN LANGUAGE AND CULTURE

NEW ZEALAND

AUCKLAND

University of Auckland

WELLINGTON

Massey University

POLAND

KRAKÓW

Jagiellonian University of Kraków

PORTUGAL

LISBON

Instituto Univ. de Lisboa / Univ. Nova de Lisboa

SCOTLAND

EDINBURGH

University of Edinburgh

STIRLING

University of Stirling

SPAIN

BARCELONA

Universitat Autònoma de Barcelona

Universitat de Barcelona / Universitat Pompeu Fabra

GRANADA

Universidad de Granada

MADRID

Universidad Nebrija

SALAMANCA

Universidad de Salamanca

FINANCIAL FREQUENTLY ASKED QUESTIONS

WHEN ARE PAYMENTS DUE?

ALL PAYMENTS ARE DUE TO API BEFORE PROGRAM START. The only exception to this API standard is if you are using financial aid to pay for all or a portion of your final payment amount due.

API makes all arrangements for students well before arrival on-site. As a result, API must collect all fees prior to the start of the semester. These arrangements can include securing your quality housing, submitting tuition deposits and fees at your host university, and arranging transport and lodging for orientation and excursions.

CAN I USE MY FINANCIAL AID TO PAY FOR MY PROGRAM?

YES, API ACCEPTS ALL FORMS OF FINANCIAL AID as long as there is approval from the home university or organization. However, API does not issue or offer financial aid.

Once proof of financial aid is provided through the submission of a completed Financial Aid Verification Form (FAVF), provided once accepted, API then adjusts a student's payment schedule based on disbursement dates of financial aid awards. This FAVF form acts as a deferral for any final payment amount covered by the financial aid. This form must be submitted by the date of the original final payment deadline. Then, the amount of financial aid on your API account will be given a new due date, usually two weeks after your financial aid disbursement date.

DOES API OFFER PAYMENT PLANS?

NO, BUT API DOES OFFER A FINAL PAYMENT EXTENSION PLAN called the Alternative Payment Arrangement (APA), which will extend your final payment deadline to 30 days before your program start date.

Please note that the APA is not considered a payment plan as API makes all arrangements on the student's behalf prior to the program start, and, as such, cannot grant extended plans past the program start date.

Many students who are unable to pay their program balance or provide a finalized financial aid verification form by their final payment deadline choose to sign up for the APA plan.

CONTACT AN API FINANCIAL SERVICES ADVISOR AT (800) 844-4124 WITH ANY QUESTIONS.

WHAT IF I WITHDRAW FROM MY PROGRAM?

YES, API DOES OFFER A WAY FOR YOU TO PAY TO SAFEGUARD THE MAJORITY OF YOUR PROGRAM PAYMENTS for a withdrawal **BEFORE PROGRAM START.**

API offers a Program Withdrawal Safeguard (PWS) for its participants as an optional service. The PWS is designed to safeguard program participants' financial investment in their study abroad experience in case of program withdrawal before the program start date for any reason.

Visit apiabroad.com/pws for pricing and more details.

CAN I SAFEGUARD PROGRAM PAYMENTS?



Scan the QR code with your smart phone's camera and go directly to the API financial information webpage.

HOW TO USE YOUR FINANCIAL AID

YES! FINANCIAL AID MAY WORK FOR YOU ABROAD!

API accepts all forms of financial aid according to approval from the home university or organization. However, API does not issue or offer financial aid.

API Financial Services adjusts a student's payment schedule based on disbursement dates of financial aid awards, provided the student's home university has completed and returned a finalized Financial Aid Verification Form (FAVF), which is provided once accepted to a program. This FAVF form acts as a deferral for any final payment amount covered by the financial aid. This form must be submitted by the date of the original final payment deadline. Please note that deposits are not allowed to be covered by financial aid and those payments must be submitted by their due dates. This includes the \$150 application deposit, \$400 confirmation payment and \$275 security deposit as well as any additional fees on the API account.

FINANCIAL AID TIMELINE AND CHECKLIST

STEP 1

UPON ACCEPTANCE INTO YOUR API PROGRAM, CONTACT YOUR SCHOOL'S FINANCIAL AID OFFICE. Share your study abroad plans and find out their requirements for using your financial aid to pay API. Some universities require that API fill out a Consortium Agreement. If necessary, provide this to API as soon as possible.

STEP 2

ACCESS THE FINANCIAL AID VERIFICATION FORM (FAVF) ON YOUR @API ACCOUNT OR OPEN THE DOCUMENT ATTACHED TO YOUR API ACCEPTANCE BILLING STATEMENT. COMPLETE THE STUDENT PORTION AT THE TOP OF THIS FORM AND SUBMIT IT TO YOUR FINANCIAL AID ADVISOR. Make sure they are aware that the completed and finalized FAVF needs to be submitted to API on or before your final payment due date.

STEP 3

FOLLOW UP REGULARLY WITH YOUR FINANCIAL AID ADVISOR TO ENSURE THAT YOUR FAVF WAS RETURNED TO API. If your aid won't be awarded or can't be finalized by your final payment due date, you should have your financial aid advisor complete a preliminary version of the FAVF.

STEP 4

SUBMIT PAYMENT FOR ANY AMOUNT NOT COVERED BY AID, ANY ADDITIONAL FEES AND THE \$275 SECURITY DEPOSIT on or before your final payment due date.

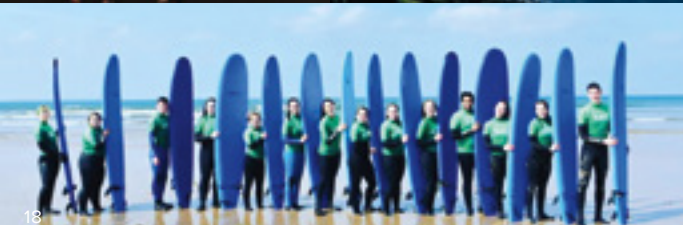
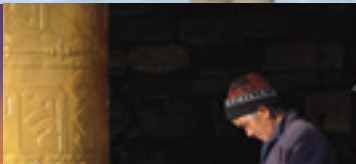
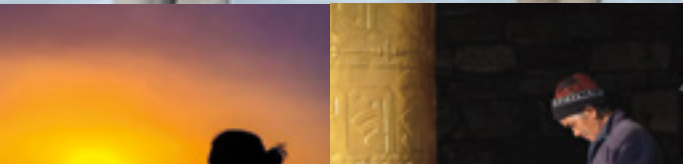
STEP 5

MAKE ARRANGEMENTS TO GET YOUR FINANCIAL AID FUNDS TO API AS SOON AS THEY ARE DISBURSED. Since, most often, financial aid isn't released until after your program start date, you'll want to ensure that these arrangements are made before you go abroad. Some schools will send the funds to API directly. **IT IS THE STUDENT'S RESPONSIBILITY TO MAKE SURE THAT API RECEIVES PAYMENT ON TIME.** You will need to stay involved in the financial aid process and be sure to report any changes in your aid to API. Many students are abroad when the funds are disbursed and will need to make arrangements to get payment to API on time.

FOR MORE INFORMATION ABOUT FINANCIAL AID, VISIT: [APIABROAD.COM/FINANCIAL-AID](https://apiabroad.com/financial-aid)

THOUSANDS

OF API STUDENTS USE THEIR FINANCIAL AID ON STUDY ABROAD PROGRAMS. YOU CAN TOO!



COMPARE THE COSTS

Use this chart to add up the cost of attending your home institution vs. taking part in an API study abroad program. You may see that the costs of studying abroad are very close to, or even below, what you currently pay.

COSTS OF:	API PROGRAM	YOUR HOME INSTITUTION
COST OF API PROGRAM → \$		
TUITION & FEES	INCLUDED	\$
HOUSING	INCLUDED	+\$
INSURANCE	INCLUDED	+\$
EXCURSIONS	INCLUDED	+\$
BOOKS	+\$	+\$
MEALS & LAUNDRY <small>INCLUDED WITH SOME API PROGRAMS</small>	+\$	+\$
AIRFARE	+\$	+\$
MISCELLANEOUS	+\$	+\$
TOTAL COST TO ATTEND	\$	\$

HERE'S HOW YOU CAN CONNECT WITH API.

INSTAGRAM [instagram.com/apiabroad](https://www.instagram.com/apiabroad)

FACEBOOK [facebook.com/APIabroad](https://www.facebook.com/APIabroad)

TWITTER twitter.com/APIabroad

YOUTUBE [youtube.com/c/APIabroad](https://www.youtube.com/c/APIabroad)

SNAPCHAT [snAPIabroad](https://www.snapchat.com/add/snAPIabroad)

PINTEREST [pinterest.com/APIabroad](https://www.pinterest.com/APIabroad)

THE API BLOG blog.apiabroad.com

E-MAIL info@apiabroad.com

TELEPHONE (800) 844-4124



Scan the QR code with your smart phone's camera and go directly to the API homepage and start your application today!

GET SOCIAL.



ALL OVER OUR WORLD, A FRIENDLY FACE IS WAITING FOR YOU!

API has on-site Resident Directors in every location who are there for you throughout your time abroad. They will meet you at the airport, take you on excursions, assist you with our university and housing partners and help to make your time abroad the best that it can be. Say hello to the API family!

ARGENTINA BUENOS AIRES: CARMEN AND JIMENA / MENDOZA: RODRIGO



AUSTRALIA BRISBANE/GOLD COAST: RENATA / MELBOURNE: RACHAEL / SYDNEY: AMY



BHUTAN THIMPHU: SONAM



CHILE SANTIAGO: CLAUDIA / VALPARAÍSO/VIÑA DEL MAR: ALEJANDRA



CHINA SHANGHAI: CORRINE



CROATIA DUBROVNIK: IVANA AND NADA



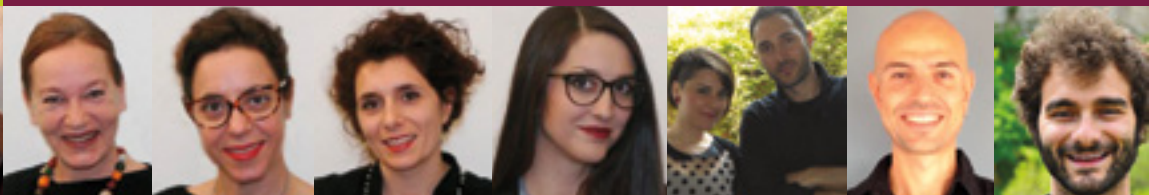
ENGLAND HARLAXTON/LEEDS: RACHEL / LONDON: HEATHER & ANNA



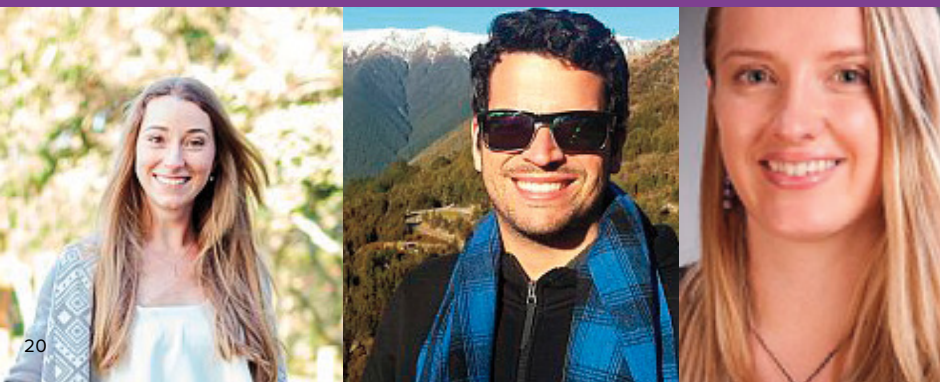
IRELAND CORK: PATRICK / DUBLIN: NIKKI / GALWAY: FIONNGHUALA & KEVIN / LIMERICK: MARY



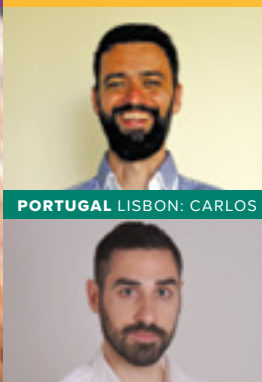
ITALY FLORENCE: ELLEN, FEDERICA, MONICA & VALENTINA / ROME: ALESSIO & NAIKE / TAORMINA: DANIELE / TUSCANIA: MATTEO



NEW ZEALAND AUCKLAND: TIANA / DUNEDIN: HUGO / WELLINGTON: ABBY



POLAND KRAKÓW: PIOTR



SCOTLAND EDINBURGH/STIRLING: CLARE



UNITED ARAB EMIRATES SHARJAH: LANA



“My Resident Director went above and beyond. She was truly my “mom” away from home and I could not have survived without her abroad! She welcomed us into her home, was available 24/7 for us if we needed and made sure to be actively involved in our lives here. She is truly an amazing asset to the API team and completely shaped my experience abroad!”

- Elizabeth R. / Texas A&M University

COSTA RICA SAN JOAQUÍN DE FLORES: ESTEBAN / SAN JOSÉ: FRANCY



CUBA HAVANA/SANTA CLARA: EMILY



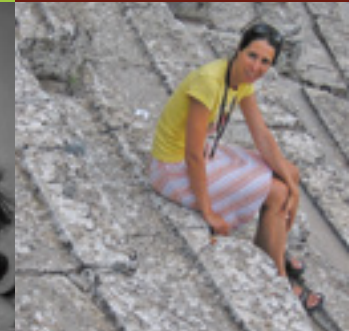
CZECH REPUBLIC PRAGUE: PAIGE



ECUADOR QUITO: ANA MARIA



HUNGARY BUDAPEST: REKA



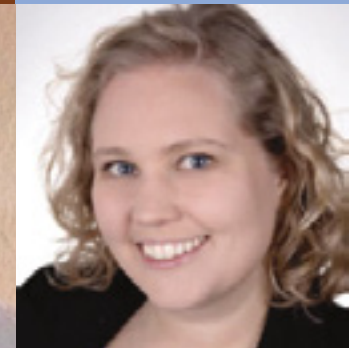
FRANCE CAEN: CAROLINE / GRENOBLE: MARIE & ANNA / PARIS: FRANCINE, LAURE & VIOLAINE



GERMANY BERLIN: CHRISTOPHER & CLUDIO



ICELAND REYKJAVÍK: HJÓRDIS



SPAIN BARCELONA: ALICIA, ARNAU, MIREIA & RUTH / BILBAO: ANDREA / CÁDIZ: VICKY / GRANADA: CURRA & CARMEN / MADRID: QUIQUE & MARÍA ANGELES / SALAMANCA: MIGUEL & INMA / SEVILLE: LOLA, KEPA, JUAN, ARACELI & MARTA



ASIA



CHINA

SHANGHAI 25

**UNITED ARAB
EMIRATES**

SHARJAH 27



RUSSIA

KAZAKHSTAN

MONGOLIA

UZBEKISTAN

KYRGYZSTAN

NORTH KOREA

TURKMENISTAN

TAJIKISTAN

SOUTH KOREA

AFGHANISTAN

CHINA

IRAN

PAKISTAN

NEPAL

BHUTAN

UAE

BANGLADESH

INDIA

MYANMAR

VIETNAM

SAUDI ARABIA

OMAN

LAOS

PHILIPPINES

THAILAND

CAMBODIA

SRI LANKA



CHINA



WHY CHINA?

- Study in the world's fastest growing economy
- The best place to learn or work on your Mandarin
- Rapidly changing society with ancient roots
- Amazing food, fascinating people, unlimited experiences

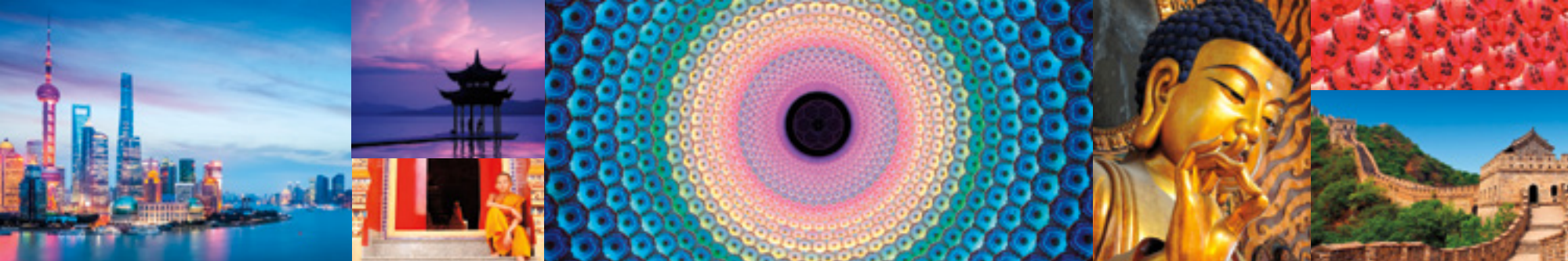
PARTNER UNIVERSITY

SHANGHAI

East China Normal University



SHANGHAI



SHANGHAI

WHY SHANGHAI?

BUSY • FUTURISTIC • ELECTRIC • DYNAMIC

- International center for finance and technology
- Taste of European colonial history
- Modern skyscrapers and architecture
- Ancient Buddhist temples



POPULATION

24,150,000



WEATHER AVERAGES

JULY: HIGH 88°F / LOW 77°F



EXCURSIONS

INCLUDED WITH PROGRAM FEE

Beijing

Daytrips in and around Shanghai



SEMESTER AND YEAR PROGRAMS

ARE AVAILABLE IN SHANGHAI

Visit apiabroad.com to explore all of our semester and year program options.



SCHOLARSHIP DEADLINE

SUMMER APRIL 1



UNIVERSITY

EAST CHINA NORMAL UNIVERSITY



HOUSING

DORMS

- Includes internet access
- Visit apiabroad.com for photos and additional housing information



VISIT APIABROAD.COM FOR COURSE OFFERINGS AND MORE DETAILED PROGRAM INFORMATION.



“This has been the most incredible and unforgettable experience of my life. I would highly recommend this program to anyone!” - Matthew W. / Parsons School of Design, The New School

UNIVERSITY AND PROGRAM NAME	CREDITS EARNED	MINIMUM G.P.A.	LANGUAGE OF INSTRUCTION	LANGUAGE LEVEL	SUBJECTS OFFERED	PROGRAM FEE	APPLICATION DEADLINE
EAST CHINA NORMAL UNIVERSITY							
Summer Chinese Language Studies	4	2.5	Mandarin Chinese	All levels	<ul style="list-style-type: none"> • Chinese Language (Mandarin) • Cultural Studies 	SUMMER \$3,980	APRIL 15



UNITED ARAB EMIRATES



WHY THE UNITED ARAB EMIRATES?

- Unique and exciting educational experience
- Wide selection of courses from many academic subjects
- Amazing campus and university area
- Sharjah is UAE's cultural capital
- Sharjah is ranked among world's top 10 small and medium cities
- Hub for Middle Eastern/Asian travel

PARTNER UNIVERSITY

SHARJAH

American University of Sharjah



SHARJAH

WHY SHARJAH?

CULTURAL • TRADITIONAL • COASTAL • HISTORIC

- U.N. Capital of Islamic Culture 2016
- Close to Dubai and Abu Dhabi
- Amazing campus area with many majors available
- Combination of Islamic and Western societies



POPULATION

1,400,000



WEATHER AVERAGES

JULY: HIGH 106°F / LOW 83°F



EXCURSIONS

INCLUDED WITH PROGRAM FEE

Abu Dhabi
Dubai



SEMESTER AND YEAR PROGRAMS

ARE AVAILABLE IN SHARJAH

Visit apiabroad.com to explore all of our semester and year program options.



SCHOLARSHIP DEADLINE

SUMMER APRIL 1



UNIVERSITY

AMERICAN UNIVERSITY OF SHARJAH



HOUSING

DORMS

- Includes internet access
- Visit apiabroad.com for photos and additional housing information



VISIT APIABROAD.COM

FOR COURSE OFFERINGS AND MORE DETAILED PROGRAM INFORMATION.

UNIVERSITY AND PROGRAM NAME	CREDITS EARNED	MINIMUM G.P.A.	LANGUAGE OF INSTRUCTION	LANGUAGE LEVEL	SUBJECTS OFFERED	PROGRAM FEES	APPLICATION DEADLINES
AMERICAN UNIVERSITY OF SHARJAH							
Full Curriculum at American University of Sharjah	3-6	2.75	Arabic English	All levels	<ul style="list-style-type: none"> • Architecture • Biological Sciences • Biomedical Sciences • Business • Communications • Computer Sciences • Cultural Studies • Education • Engineering • Environmental Studies • History • Literature • Mathematics • Performing Arts • Physical Sciences • Social Sciences • Visual Arts 	<p>ONE COURSE SUMMER \$9,680</p> <p>TWO COURSES SUMMER \$12,180</p>	MARCH 15
Intensive Arabic Language Studies	6	2.75	Arabic	All levels	<ul style="list-style-type: none"> • Arabic Language • Cultural Studies 	<p>SUMMER \$9,980</p>	MARCH 15

EUROPE

CROATIA

DUBROVNIK 31

CZECH REPUBLIC

PRAGUE 33

ENGLAND

HARLAXTON 35

LONDON 36

FRANCE

CAEN 40

GRENOBLE 41

PARIS 43

GERMANY

BERLIN 46

IRELAND

CORK 48

DUBLIN 49

GALWAY 50

LIMERICK 51

ITALY

FLORENCE 54

ROME 56

SYRACUSE 58

TAORMINA 59

TUSCANIA 60

POLAND

KRAKÓW 62

PORTUGAL

LISBON 64

SCOTLAND

EDINBURGH 66

STIRLING 67

SPAIN

BARCELONA 70

GRANADA 72

MADRID 73

SALAMANCA 74

SEVILLE 75







CROATIA



WHY CROATIA?

- Undiscovered gem of Europe
- Multiple UNESCO World Heritage Sites
- Dubrovnik among the 10 best medieval walled cities in the world
- Beautiful beaches and national parks
- Filming location for King's Landing in HBO's "Game of Thrones" series and recent Star Wars movies!

PARTNER UNIVERSITY

DUBROVNIK

Libertas International University

DUBROVNIK

WHY DUBROVNIK?

UNIQUE • INSPIRATIONAL • NATURAL • OCEAN

- Lord Byron calls Dubrovnik 'the pearl of the Adriatic'
- A UNESCO World Heritage Site
- University is located within the city walls
- "Game of Thrones" and "Star Wars" filming location



POPULATION

42,615



WEATHER AVERAGES

JANUARY: HIGH 52°F / LOW 41°F

JULY: HIGH 82°F / LOW 69°F



EXCURSIONS

INCLUDED WITH PROGRAM FEE

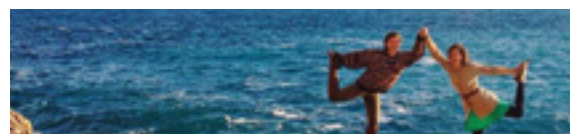
Elafiti Islands
Lokrum Island



SEMESTER AND YEAR PROGRAMS

ARE AVAILABLE IN DUBROVNIK

Visit apiabroad.com to explore all of our semester and year program options.



UNIVERSITY

LIBERTAS INTERNATIONAL UNIVERSITY



HOUSING

APARTMENTS

- Includes internet access
- Most units are within a 5-10 minute walk of school
- Visit apiabroad.com for photos and additional housing information

UNIVERSITY AND PROGRAM NAME	CREDITS EARNED	MINIMUM G.P.A.	LANGUAGE OF INSTRUCTION	LANGUAGE LEVEL	SUBJECTS OFFERED	PROGRAM FEES	APPLICATION DEADLINES
LIBERTAS INTERNATIONAL UNIVERSITY							
Maymester in Croatia (Dubrovnik)	3	2.5	English	All levels	<ul style="list-style-type: none"> • Business • Hospitality and Tourism • Social Sciences 	MAYMESTER \$3,700	FEBRUARY 1

Excursions, courses, entry requirements, dates and fees are subject to change. Students are encouraged to visit apiabroad.com for the most current information and official program dates for each session.

VISIT APIABROAD.COM FOR COURSE OFFERINGS AND MORE DETAILED PROGRAM INFORMATION.



CZECH REPUBLIC



WHY CZECH REPUBLIC?

- Wide variety of courses in English
- International excursions included
- Old Europe charm and new Europe cool
- Great jumping off point to explore Central Europe

PARTNER UNIVERSITIES

PRAGUE

Charles University

University of Economics, Prague (VSE)

PRAGUE

WHY PRAGUE?

UNIQUE • TIMELESS • INTRIGUING

- One of Europe's fastest growing art scenes
- Home to Prague Castle and the Charles Bridge
- Classes with students from all over Europe



POPULATION

1,300,000



WEATHER AVERAGES

JANUARY: HIGH 35°F / LOW 25°F

JULY: HIGH 73°F / LOW 55°F



EXCURSIONS

INCLUDED WITH PROGRAM FEE

Budapest, Hungary **SUMMER**

INTERNATIONAL EXCURSION

Daytrips in and around Prague

Dresden, Germany **JANUARY**

INTERNATIONAL EXCURSION



SEMESTER AND YEAR PROGRAMS

ARE AVAILABLE IN PRAGUE

Visit apiabroad.com to explore all of our semester and year program options.



UNIVERSITIES

CHARLES UNIVERSITY

UNIVERSITY OF ECONOMICS, PRAGUE (VSE)



HOUSING

APARTMENTS • RESIDENCE HALLS

- Includes internet access
- Visit apiabroad.com for photos and additional housing information



VISIT **APIABROAD.COM**

FOR COURSE OFFERINGS AND MORE DETAILED PROGRAM INFORMATION.

UNIVERSITY AND PROGRAM NAME	CREDITS EARNED	MINIMUM G.P.A.	LANGUAGE OF INSTRUCTION	LANGUAGE LEVEL	SUBJECTS OFFERED	PROGRAM FEES	APPLICATION DEADLINES
CHARLES UNIVERSITY							
Arts and Social Sciences	6-12	3.0	Czech English	All levels	<ul style="list-style-type: none"> • Architecture • Business • Communications • Cultural Studies • Czech Language • Literature • Performing Arts • Social Sciences • Visual Arts 	SUMMER 1 \$4,950 SUMMER 2 \$4,950 SUMMER 1 & 2 \$7,950	APRIL 1
Jan Term in Prague	3	3.0	Czech English	All levels	<ul style="list-style-type: none"> • Architecture • Cultural Studies • Czech Language 	JANUARY \$3,680	NOVEMBER 1
UNIVERSITY OF ECONOMICS, PRAGUE (VSE)							
International Business Studies	6	2.5	Czech English	All levels	<ul style="list-style-type: none"> • Business • Cultural Studies • Czech Language 	SUMMER \$4,850	APRIL 1



ENGLAND



WHY ENGLAND?

- Study in a restored English manor at Harlaxton College
- London offers an endless array of cultural and historic treasures
- Unique art and business programs in London
- London is a global business, economic and political hub

PARTNER UNIVERSITIES

HARLAXTON

Harlaxton College

LONDON

London School of Economics
University of the Arts London
University College London
University of Westminster



HARLAXTON

WHY HARLAXTON?

QUAINT • PICTURESQUE • MAGICAL • HISTORIC

- Live and study in an English manor house
- Amazing learning in and out of classroom
- Groundbreaking British studies program
- Harry Potter style house competitions



POPULATION

35,000



WEATHER AVERAGES

JULY: HIGH 72°F / LOW 55°F

"Living in the Harlaxton Manor felt like living in a movie!" - John R. / University of Oregon



EXCURSIONS

INCLUDED WITH PROGRAM FEE

- London
- Nottingham
- Scotland
- York



SEMESTER AND YEAR PROGRAMS

ARE AVAILABLE IN HARLAXTON

Visit apiabroad.com to explore all of our semester and year program options.



HARLAXTON COLLEGE

Beyond Your Imagination



UNIVERSITY

HARLAXTON COLLEGE



HOUSING

DORM-STYLE HOUSING

- Includes internet access and fully-catered meals
- Rec halls, sports hall, full grounds available
- Visit apiabroad.com for photos and additional housing information



SCHOLARSHIP DEADLINE
SUMMER APRIL 1



VISIT APIABROAD.COM
FOR COURSE OFFERINGS AND MORE DETAILED PROGRAM INFORMATION.

UNIVERSITY AND PROGRAM NAME	CREDITS EARNED	MINIMUM G.P.A.	LANGUAGE OF INSTRUCTION	SUBJECTS OFFERED			PROGRAM FEES	APPLICATION DEADLINES
HARLAXTON COLLEGE								
British Studies	3	2.5	English	<ul style="list-style-type: none"> • Biological Sciences • Business • Cultural Studies 	<ul style="list-style-type: none"> • Environmental Studies • Health Sciences • Physical Sciences 	<ul style="list-style-type: none"> • Social Sciences • Visual Arts 	SUMMER \$6,630	APRIL 1



LONDON

WHY LONDON?

BUSTLING • DIVERSE • CREATIVE • INSPIRING

- International center of art and design
- Global political and economic/business hub
- Wealth of galleries, museums and studios, historic sites and castles
- World-renowned theater scene
- One of Europe's most diverse and fascinating cities



POPULATION

8,675,000



WEATHER AVERAGES

JULY: HIGH 73°F / LOW 53°F



EXCURSIONS

INCLUDED WITH PROGRAM FEE

Brighton*

Harlaxton Manor*

Paris, France UAL LONDON COLLEGE OF FASHION ONLY
INTERNATIONAL EXCURSION

Windsor Castle*

*Summer students attending courses at UAL (CSM), LSE or Westminster will take part in one excursion if they do one term; two if two terms; three if three terms.



SEMESTER AND YEAR PROGRAMS

ARE AVAILABLE IN LONDON

Visit apiabroad.com to explore all of our semester and year program options.



UNIVERSITIES

LONDON SCHOOL OF ECONOMICS AND POLITICAL SCIENCE
UNIVERSITY OF THE ARTS LONDON
UNIVERSITY COLLEGE LONDON
UNIVERSITY OF WESTMINSTER



HOUSING

APARTMENTS

- Includes internet access
- Fully-furnished, including kitchen utensils and some linens
- Weekly cleaning service included
- Visit apiabroad.com for photos and additional housing information



SCHOLARSHIP DEADLINE
SUMMER APRIL 1



VISIT APIABROAD.COM
FOR COURSE OFFERINGS AND MORE DETAILED PROGRAM INFORMATION.

“Studying abroad at the University Arts London was such an incredible and inspiring experience! I am forever grateful to the API staff for helping to make my time abroad the best it could be. Cheers!”

- Matthew W. / Parsons School of Design, The New School



UNIVERSITY AND PROGRAM NAME	CREDITS EARNED	MINIMUM G.P.A.	LANGUAGE OF INSTRUCTION	SUBJECTS OFFERED			PROGRAM FEES		APPLICATION DEADLINES
LONDON SCHOOL OF ECONOMICS AND POLITICAL SCIENCE									
Full Curriculum at the London School of Economics and Political Science	3-9	3.0	English	<ul style="list-style-type: none"> • Business • Communications • Cultural Studies 	<ul style="list-style-type: none"> • History • Mathematics 	<ul style="list-style-type: none"> • Political Science • Social Sciences 	SUMMER 1 SUMMER 2 SUMMER 3 2 SESSIONS COMBINED 3 SESSIONS COMBINED	\$6,575 \$6,575 \$6,575 \$11,375 \$15,680	SUMMER 1 APRIL 1 SUMMER 2 APRIL 10 SUMMER 3 APRIL 30
UNIVERSITY OF THE ARTS LONDON									
Summer Fashion Studies at London College of Fashion	12	3.0	English	<ul style="list-style-type: none"> • Business • Fashion Product Design 			SUMMER 1 INCLUDES A TRIP TO PARIS, FRANCE!	\$12,780	APRIL 1
Summer Arts in London at UAL	6-18	2.75	English	<ul style="list-style-type: none"> • Architecture • Business 	<ul style="list-style-type: none"> • Communications • Performing Arts 	<ul style="list-style-type: none"> • Visual Arts 	SUMMER 1 SUMMER 2 SUMMER 2 2 SESSIONS COMBINED 3 SESSIONS COMBINED	\$5,980 \$5,980 \$5,980 \$10,960 \$15,380	APRIL 1
UNIVERSITY COLLEGE LONDON									
Full Summer Curriculum at University College London	3-6	3.3	English	<ul style="list-style-type: none"> • Business • Cultural Studies • Education 	<ul style="list-style-type: none"> • Health Sciences • History • Literature 	<ul style="list-style-type: none"> • Mathematics • Medical Sciences • Social Sciences 	SUMMER 1 SUMMER 2 2 SESSIONS COMBINED	\$6,150 \$6,150 \$9,280	MAY 1
UNIVERSITY OF WESTMINSTER									
Full Summer Curriculum at the University of Westminster	3-6	2.7	English	<ul style="list-style-type: none"> • Business • Communications • Health Sciences 	<ul style="list-style-type: none"> • Literature • Management • Social Sciences 	<ul style="list-style-type: none"> • Visual Arts 	SUMMER 1 SUMMER 2 2 SESSIONS COMBINED	\$5,280 \$5,280 \$8,980	SUMMER 1 APRIL 1 SUMMER 2 APRIL 10



FRANCE





PARTNER UNIVERSITIES

CAEN

Université de Caen, Basse-Normandie

GRENOBLE

Université Grenoble Alpes
Grenoble École de Management

PARIS

Cours de Civilisation Française
de la Sorbonne
Institut Catholique de Paris
Parsons Paris - The New School



WHY FRANCE?

- Study and live in the Normandy region, the French Alps or in the City of Lights
- The *joie de vivre*
- Acclaimed French universities
- Wonderful museums and cultural history
- Caen is one of the most historically rich areas of France
- Beautiful alpine vistas in Grenoble
- Paris is one of the fashion, art and culture capitals of the world

"API was one of the best programs I have ever been a part of. The staff is amazing, they organized things very well, and they always made sure there was something to be doing or giving suggestions or even being as kind to take lunch all together."

- Natalia F. / Siena College



CAEN

WHY CAEN?

HISTORICAL • CHARMING • TRADITIONAL • VIBRANT

- Located in the Normandy region of France
- An excellent and progressive institution
- Two hours from Paris
- Amazing regional cuisine
- Historic seaside resorts located near by



POPULATION

106,500



WEATHER AVERAGES

JULY: HIGH 73°F / LOW 56°F



EXCURSIONS

INCLUDED WITH PROGRAM FEE

Étretat and Honfleur [SUMMER 1](#)

Giverny and Rouen [SUMMER 2](#)

Landing Beaches/Bayeux [SUMMER 1](#)

Mont Saint-Michel/Saint-Malo [SUMMER 1 & 2](#)

Paris [SUMMER 1 & 2](#)

Pays d'Auge [SUMMER 2](#)



SEMESTER AND YEAR PROGRAMS

ARE AVAILABLE IN CAEN

Visit apiabroad.com to explore all of our semester and year program options.



UNIVERSITY

UNIVERSITÉ DE CAEN, BASSE-NORMANDIE



HOUSING

DORMS • HOST FAMILIES

- Includes internet access
- Laundry and some meals are included
- Monthly transit pass included
- Visit apiabroad.com for photos and additional housing information



SCHOLARSHIP DEADLINE SUMMER APRIL 1

UNIVERSITY AND PROGRAM NAME	CREDITS EARNED	MINIMUM G.P.A.	LANGUAGE OF INSTRUCTION	LANGUAGE LEVEL	SUBJECTS OFFERED	PROGRAM FEES	APPLICATION DEADLINES
UNIVERSITÉ DE CAEN, BASSE-NORMANDIE							
Intensive French Language Studies in Normandy	5-10	2.5	French	All levels	• Cultural Studies • French Language	SUMMER 1 \$5,180 SUMMER 2 \$5,180 2 SESSIONS COMBINED \$8,680	APRIL 1

VISIT APIABROAD.COM FOR COURSE OFFERINGS AND MORE DETAILED PROGRAM INFORMATION.



GRENOBLE

WHY GRENOBLE?

MULTICULTURAL • SCENIC • NATURAL • MOUNTAINOUS

- Situated amid the French Alps
- Well-established international education programs with large student population
- Proximity to Switzerland, Italy, and the Mediterranean
- Great for year-round outdoor sports - skiing, snowboarding, hiking, biking



POPULATION

775,000



WEATHER AVERAGES

JANUARY: HIGH 46°F / LOW 36°F

JULY: HIGH 72°F / LOW 55°F



EXCURSIONS

INCLUDED WITH PROGRAM FEE

Anney **SUMMER 2**

Chartreuse **SUMMER 2**

Geneva, Switzerland **SUMMER 2**

INTERNATIONAL EXCURSION

Lyon **SUMMER 1**

Marseille **SUMMER 1**

Paris **SUMMER 1 & 2**



SEMESTER AND YEAR PROGRAMS

ARE AVAILABLE IN GRENOBLE

Visit apiabroad.com to explore all of our semester and year program options.



UNIVERSITIES

GRENOBLE ÉCOLE DE MANAGEMENT
UNIVERSITÉ GRENOBLE ALPES (CUEF)



HOUSING

DORMS

HOST FAMILIES

HOTELS GEM TRAVELLING PROGRAM

- Includes internet access
- Dorms have access to kitchen and students receive a meal stipend for weekday lunches
- Host family housing includes 2 meals per day and laundry service
- Monthly transit pass included
- Visit apiabroad.com for photos and additional housing information



SCHOLARSHIP DEADLINE SUMMER APRIL 1

"I had such a positive experience with API! If I could study abroad again, I would do it again with API."

- Cameron W. / University of Denver

Scan the QR code with your smart phone's camera and go directly to the API Grenoble webpage and **start your application today!**





VISIT [APIABROAD.COM](https://apiabroad.com) FOR COURSE OFFERINGS AND MORE DETAILED PROGRAM INFORMATION.

UNIVERSITY AND PROGRAM NAME	CREDITS EARNED	MINIMUM G.P.A.	LANGUAGE OF INSTRUCTION	LANGUAGE LEVEL	SUBJECTS OFFERED	PROGRAM FEES	APPLICATION DEADLINES
GRENOBLE ÉCOLE DE MANAGEMENT							
International Business Studies in the French Alps	6	2.75	English	All levels	<ul style="list-style-type: none"> • Business • French Language 	SUMMER 1 \$7,980	MARCH 15
UNIVERSITÉ GRENOBLE ALPES (CUEF)							
Intensive Language Studies in the French Alps	5-10	2.5	French	All levels	<ul style="list-style-type: none"> • French Language 	SUMMER 1 \$4,980 SUMMER 2 \$4,980 2 SESSIONS COMBINED \$8,980	APRIL 1
Short-Term Intensive French Language Studies in the French Alps	5.33	2.5	French	All levels	<ul style="list-style-type: none"> • French Language 	3-WEEK PROGRAM \$4,680 4-WEEK PROGRAM \$4,980	8 WEEKS PRIOR TO PROGRAM START DATE
French Language and Culture Studies in the French Alps	5-6	2.5	French English	Intermediate Advanced Superior	<ul style="list-style-type: none"> • Business • Cultural Studies • French Language 	SUMMER 2 2 SESSIONS COMBINED \$8,980	APRIL 1

Excursions, courses, entry requirements, dates and fees are subject to change. Students are encouraged to visit apiabroad.com for the most current information and official program dates for each session.



PARIS

WHY PARIS?

STYLISH • COSMOPOLITAN • INSPIRING • HISTORIC

- World-class cosmopolitan city and intellectual hub
- Excellent universities
- Fashion/art/culture capital with some of the best museums in the world
- Home to legendary artists, poets and scientists



POPULATION

2,150,000



WEATHER AVERAGES

JANUARY: HIGH 45°F / LOW 37°F
 JULY: HIGH 78°F / LOW 60°F

“This has been the most incredible and unforgettable experience of my life. I would highly recommend this program to anyone!”

- Gareth M. / University of California, San Diego



EXCURSIONS

INCLUDED WITH PROGRAM FEE

- Angers [SUMMER 2](#)
- Burgundy [SUMMER 2](#)
- French Châteaux [SUMMER 1 & 2](#)
- Normandy [SUMMER 1](#)
- Strasbourg [SUMMER 1](#)



SEMESTER AND YEAR PROGRAMS

ARE AVAILABLE IN PARIS

Visit apiabroad.com to explore all of our semester and year program options.



SCHOLARSHIP DEADLINE

SUMMER APRIL 1



UNIVERSITIES

- COURS DE CIVILISATION FRANÇAISE DE LA SORBONNE
- INSTITUT CATHOLIQUE DE PARIS
- PARSONS PARIS - THE NEW SCHOOL
- UNIVERSITÉ PARIS DAUPHINE
- UNIVERSITÉ PARIS DIDEROT



HOUSING

- APARTMENTS
- DORMS
- HOST FAMILIES
- Includes internet access
- Host family housing includes 2 dinner meals and 5 breakfast meals per week and laundry service
- Monthly transit pass included
- Visit apiabroad.com for photos and additional housing information



VISIT APIABROAD.COM

FOR COURSE OFFERINGS AND MORE DETAILED PROGRAM INFORMATION.



UNIVERSITY AND PROGRAM NAME	CREDITS EARNED	MINIMUM G.P.A.	LANGUAGE OF INSTRUCTION	LANGUAGE LEVEL	SUBJECTS OFFERED	PROGRAM FEES	APPLICATION DEADLINES
COURS DE CIVILISATION FRANÇAISE DE LA SORBONNE							
French Language at Cours de Civilisation Française de la Sorbonne	3-6	2.5	French	All levels	• Cultural Studies • French Language	SUMMER 1 \$5,280 SUMMER 2 \$5,280 2 SESSIONS COMBINED \$9,560 INTENSIVE OPTION SUMMER 2 \$5,780	APRIL 1
INSTITUT CATHOLIQUE DE PARIS							
Intensive Language Studies at the Institute Catholique de Paris	6-12	2.5	French	All levels	• Cultural Studies • French Language	SUMMER 1 \$5,480 SUMMER 2 \$5,480 2 SESSIONS COMBINED \$9,580	APRIL 1
Short-Term Intensive French Language Studies at the Institut Catholique de Paris	5-6	2.5	French	All levels	• French Language	JANUARY \$4,980 SEPTEMBER \$4,980	8 WEEKS PRIOR TO PROGRAM START DATE
PARSONS PARIS - THE NEW SCHOOL							
	Parsons Paris, founded in 1921, is accredited by NASAD (National Association of the Schools of Art and Design) and by MSCHE (Middle States Commission on Higher Education) and is recognized by the French Ministry of Education as a Private Establishment of Higher Education (Etablissement d'Enseignement Supérieur Privé). Parsons Paris is affiliated with Parsons School of Design - The New School in New York City which is ranked the #1 art and design school in the U.S.						
Art and Design Program at Parsons Paris	3-12	2.75	English	All levels	SUMMER 1 • Business • Fashion Design • Communications Process SUMMER 2 • Business • Fashion Design • Graphic Design • Communications Process • Photography • Drawing	ONE COURSE SUMMER 1 OR 2 \$6,590 TWO COURSES SUMMER 1 OR 2 \$9,980 SUMMER 1 AND 2 \$12,460 THREE COURSES SUMMER 1 AND 2 \$15,480 FOUR COURSES SUMMER 1 AND 2 \$18,980	MARCH 15
PARSONS PARIS - THE NEW SCHOOL + POLIMODA: LUXURY DESIGN MANAGEMENT							
Luxury Design Management in Paris and Florence	6	2.75	English	All levels	• Luxury Design Management	SUMMER 1 \$7,880	MARCH 15



GERMANY



WHY GERMANY?

- Berlin is one of Europe's trendiest and most cosmopolitan cities
- Thousands of years of history
- Renowned universities, research institutes, orchestras and museums
- Well known for its festivals, diverse architecture, nightlife, contemporary arts,
- High quality of living

PARTNER UNIVERSITIES

BERLIN

Freie Universität Berlin

Humboldt-Universität zu Berlin



BERLIN

WHY BERLIN?

UNIQUE • INSPIRATIONAL • NATURAL • OCEAN

- The Federal Republic of Germany's capital
- One of the trendiest cities in Europe
- A very socially tolerant city
- Fascinating history



POPULATION

3,500,000



WEATHER AVERAGES

JULY: HIGH 73°F / LOW 56°F



EXCURSIONS

INCLUDED WITH PROGRAM FEE

Dresden [SUMMER 2](#) Postdam [SUMMER 1 & 2](#)
 Hamburg [SUMMER 1](#) Spreewald [SUMMER 2](#)
 Leipzig [SUMMER 1](#)



SEMESTER AND YEAR PROGRAMS

ARE AVAILABLE IN BERLIN

Visit apiabroad.com to explore all of our semester and year program options.



VISIT APIABROAD.COM

FOR COURSE OFFERINGS AND MORE DETAILED PROGRAM INFORMATION.



UNIVERSITIES

FREIE UNIVERSITÄT BERLIN
 HUMBOLDT-UNIVERSITÄT ZU BERLIN



HOUSING

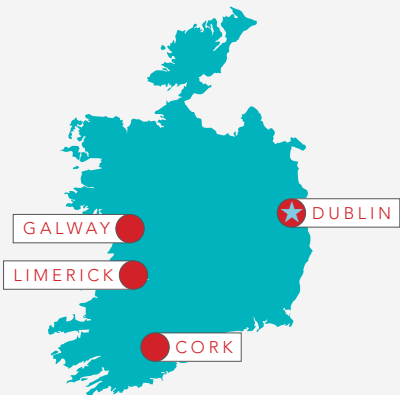
APARTMENTS
 HOST FAMILIES

- Includes internet access and transit pass
- Two meals per day with host families
- Visit apiabroad.com for photos and additional housing information

UNIVERSITY AND PROGRAM NAME	CREDITS EARNED	MINIMUM G.P.A.	LANGUAGE OF INSTRUCTION	LANGUAGE LEVEL	SUBJECTS OFFERED	PROGRAM FEES	APPLICATION DEADLINES
FREIE UNIVERSITÄT BERLIN							
German Language and Culture Studies at FUBiS	3-4	2.8	German English	All levels	<ul style="list-style-type: none"> • Cultural Studies • German Language • History • Performing Arts 	TRACK ONE SUMMER 1 \$8,650	MARCH 15
						TRACK TWO SUMMER 1 \$9,650	
HUMBOLDT-UNIVERSITÄT ZU BERLIN							
German Language and Culture Studies at Humboldt University	3-4	2.75	German	All levels	<ul style="list-style-type: none"> • Cultural Studies • Literature • German Language 	SUMMER 1 \$5,380	MARCH 15
						SUMMER 2 \$5,380	
						2 SESSIONS COMBINED \$9,780	



IRELAND



WHY IRELAND?

- Enjoy both traditional and modern Ireland in Cork
- Dublin is a modern city that feels more like a large village with vibrant artistic, literary and musical traditions
- Galway has one of the top-rated universities in Ireland and is the seat of Gaelic language and culture
- County Limerick has over 400 castles

PARTNER UNIVERSITIES

CORK
University College Cork

DUBLIN
Maynooth University
University College Dublin

GALWAY
National University of Ireland, Galway

LIMERICK
University of Limerick



CORK

WHY CORK?

FESTIVE • FOODIE • HISTORIC • PICTURESQUE

- Welcoming and vibrant university
- Natural beauty and riverside settings for hiking, biking or relaxing
- International Film, Folk and Jazz Festivals
- Located only a few miles from the famous Blarney Castle and Blarney Stone



POPULATION

545,000



WEATHER AVERAGES

JULY: HIGH 66°F / LOW 53°F



EXCURSIONS

INCLUDED WITH PROGRAM FEE

- Blarney Castle SUMMER
- Camden Fort Meagher SUMMER
- Curraghmore House, County Waterford SUMMER
- Killarney SUMMER



SEMESTER AND YEAR PROGRAMS

ARE AVAILABLE IN CORK

Visit apiabroad.com to explore all of our semester and year program options.



SCHOLARSHIP DEADLINE

SUMMER APRIL 1



UNIVERSITY

UNIVERSITY COLLEGE CORK



HOUSING

APARTMENTS

- Includes internet access
- Visit apiabroad.com for photos and additional housing information



VISIT **APIABROAD.COM**

FOR COURSE OFFERINGS AND MORE DETAILED PROGRAM INFORMATION.



"I did not realize the level of support that API offered over direct enrollment. Seeing my peers that did not study through API made me grateful for doing so." - Austin S. / Quinnipiac University

UNIVERSITY AND PROGRAM NAME	CREDITS EARNED	MINIMUM G.P.A.	LANGUAGE OF INSTRUCTION	SUBJECTS OFFERED	PROGRAM FEES	APPLICATION DEADLINES
UNIVERSITY COLLEGE CORK						
Irish Studies	5	2.85	English	<ul style="list-style-type: none"> • History • Literature 	SUMMER 1 \$5,280	APRIL 1

DUBLIN

WHY DUBLIN?

FRIENDLY • LIVELY • COASTAL • HISTORIC

- A city that feels more like a large village
- Strong artistic, literary and musical traditions
- Hub for European travel
- Charming Irish hospitality



POPULATION

1,345,000



WEATHER AVERAGES

JULY: HIGH 67°F / LOW 53°F



EXCURSIONS

INCLUDED WITH PROGRAM FEE

Bray [SUMMER](#) MAYNOOTH

Galway [SUMMER](#) MAYNOOTH

Giant's Causeway [SUMMER](#) MAYNOOTH

Glendalough and DunLaoghaire [SUMMER](#) MAYNOOTH

Newgrange [SUMMER](#) UCD



SEMESTER AND YEAR PROGRAMS

ARE AVAILABLE IN DUBLIN

Visit [apiabroad.com](#) to explore all of our semester and year program options.



SCHOLARSHIP DEADLINE

SUMMER APRIL 1



UNIVERSITIES

MAYNOOTH UNIVERSITY

UNIVERSITY COLLEGE DUBLIN



HOUSING

APARTMENTS

- Includes internet access
- Most students have a private bedroom
- Visit [apiabroad.com](#) for photos and additional housing information



VISIT [APIABROAD.COM](#)

FOR COURSE OFFERINGS AND MORE DETAILED PROGRAM INFORMATION.

UNIVERSITY AND PROGRAM NAME	CREDITS EARNED	MINIMUM G.P.A.	LANGUAGE OF INSTRUCTION	SUBJECTS OFFERED	PROGRAM FEES	APPLICATION DEADLINES
MAYNOOTH UNIVERSITY						
Irish Studies	5-6	2.75	English	<ul style="list-style-type: none"> • Business • Computer Sci. • Cultural Studies • Environmental Studies • History • Literature • Social Sciences • Visual Arts 	SUMMER 1 \$6,380	APRIL 1
UNIVERSITY COLLEGE DUBLIN						
Architecture Studies	6	3.0	English	<ul style="list-style-type: none"> • Architecture • Visual Arts 	SUMMER 1 \$7,980	MARCH 15

GALWAY

WHY GALWAY?

CHARMING • OUTDOORSY • BAYSIDE • LAID-BACK

- Cultural Capital of Ireland with year-round festivals
- One of the youngest populations in Europe
- Top destination for water sports and hiking
- State-of-the-art athletic facilities with 80+ academic, athletic and student social clubs



POPULATION

75,500



WEATHER AVERAGES

JULY: HIGH 65°F / LOW 55°F



EXCURSIONS

INCLUDED WITH PROGRAM FEE

Aran Islands [SUMMER](#)

Connemara [SUMMER](#)

Dingle [SUMMER](#)



SEMESTER AND YEAR PROGRAMS

ARE AVAILABLE IN GALWAY

Visit [apiabroad.com](#) to explore all of our semester and year program options.



SCHOLARSHIP DEADLINE

SUMMER APRIL 1



UNIVERSITY

NATIONAL UNIVERSITY OF IRELAND, GALWAY



HOUSING

APARTMENTS

- Includes internet access
- Includes membership at NUI Galway gym
- Visit [apiabroad.com](#) for photos and additional housing information



VISIT [APIABROAD.COM](#)
FOR COURSE OFFERINGS AND MORE
DETAILED PROGRAM INFORMATION.

UNIVERSITY AND PROGRAM NAME	CREDITS EARNED	MINIMUM G.P.A.	LANGUAGE OF INSTRUCTION	SUBJECTS OFFERED	PROGRAM FEES	APPLICATION DEADLINES
NATIONAL UNIVERSITY OF IRELAND, GALWAY						
Irish Studies	6	3.0	English	<ul style="list-style-type: none"> • Cultural Studies • History • Literature • Visual Arts 	SUMMER 1 \$5,980	APRIL 1
Ecology of Western Ireland	6	3.0	English	<ul style="list-style-type: none"> • Biological Sciences 	SUMMER 1 \$5,380 SUMMER 2 \$5,380 2 SESSIONS COMBINED \$8,700	APRIL 1



LIMERICK

WHY LIMERICK?

HISTORIC • CREATIVE • MULTICULTURAL • FRIENDLY

- Founded by the Vikings in the 10th century, making it the oldest chartered city in Ireland
- Third largest city in Ireland
- Over 400 castles in county Limerick
- University of Limerick voted Best Student Experience and Warmest Welcome in Ireland



POPULATION

192,000



WEATHER AVERAGES

JULY: HIGH 68°F / LOW 54°F



EXCURSIONS

INCLUDED WITH PROGRAM FEE

- Blarney Castle **SUMMER**
- Bunratty Castle and Folk Park **SUMMER**
- Dublin **SUMMER**
- Wild Atlantic Way **SUMMER**



SEMESTER AND YEAR PROGRAMS

ARE AVAILABLE IN LIMERICK

Visit apiabroad.com to explore all of our semester and year program options.



SCHOLARSHIP DEADLINE

SUMMER APRIL 1



UNIVERSITY

UNIVERSITY OF LIMERICK



HOUSING

APARTMENTS

- Includes internet access
- All students have a private bedroom
- 3 meals/day included in summer program
- Visit apiabroad.com for photos and additional housing information



VISIT APIABROAD.COM

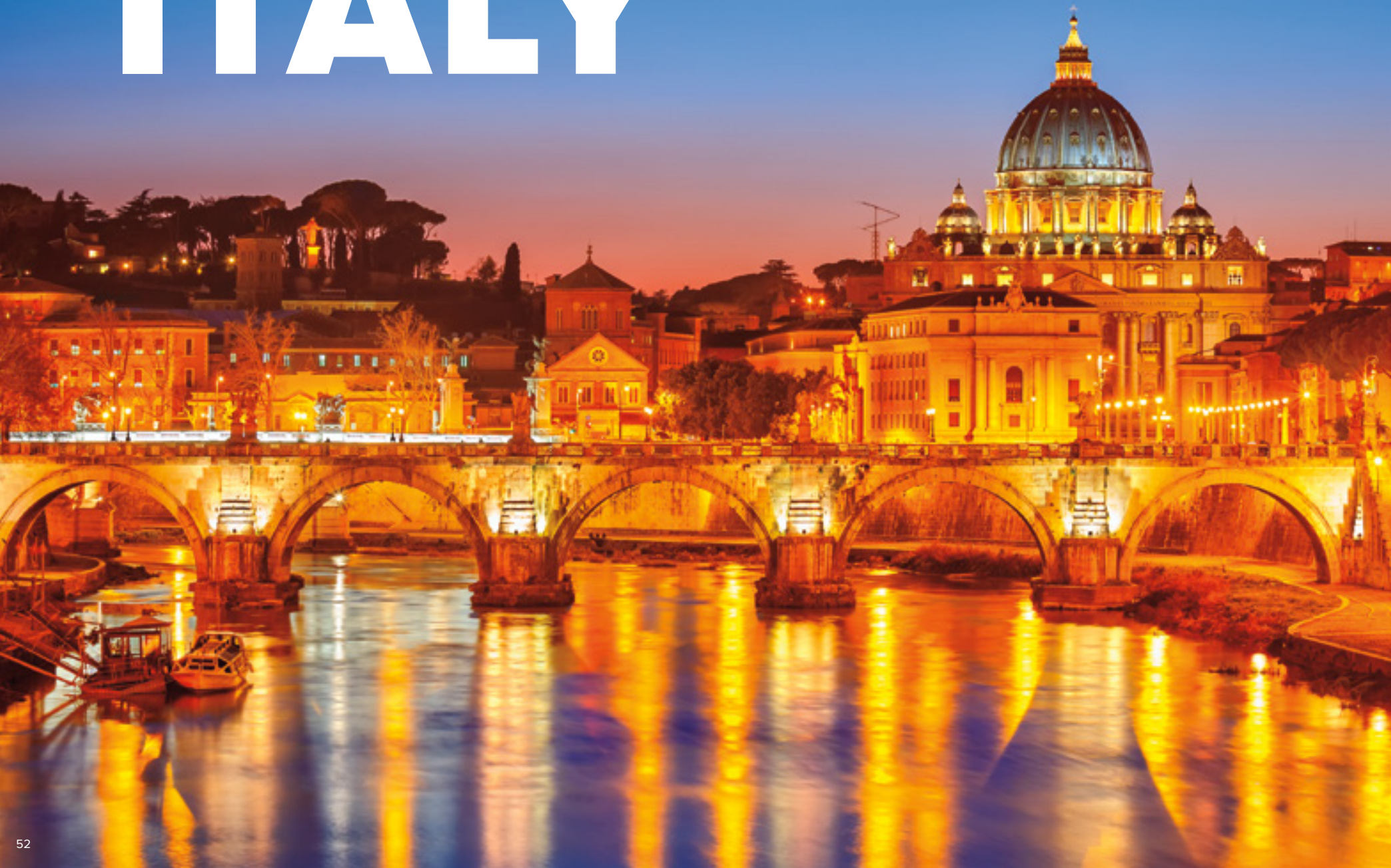
FOR COURSE OFFERINGS AND MORE DETAILED PROGRAM INFORMATION.

UNIVERSITY AND PROGRAM NAME	CREDITS EARNED	MINIMUM G.P.A.	LANGUAGE OF INSTRUCTION	SUBJECTS OFFERED	PROGRAM FEES	APPLICATION DEADLINES
UNIVERSITY OF LIMERICK						
Irish Studies	12-15	2.5	English	<ul style="list-style-type: none"> • Business • Cultural Studies • Health Sciences • History • Literature • Social Sciences • Visual Arts 	SUMMER 1 \$5,280	APRIL 1

Excursions, courses, entry requirements, dates and fees are subject to change. Students are encouraged to visit apiabroad.com for the most current information and official program dates for each session.



ITALY





PARTNER UNIVERSITIES

FLORENCE

Lorenzo de' Medici - The Italian International Institute

ROME

John Cabot University
Lorenzo de' Medici - The Italian International Institute

SYRACUSE

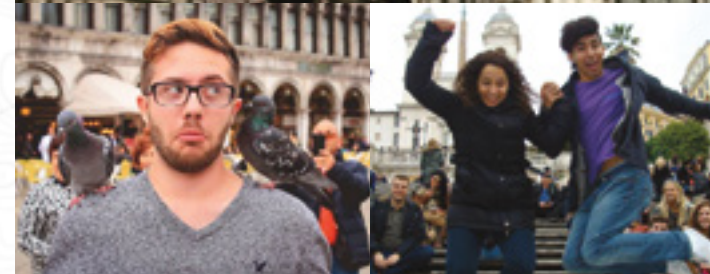
Syracuse Academy

TAORMINA

Babilonia - Center for Italian Language and Culture

TUSCANIA

Lorenzo de' Medici - The Italian International Institute

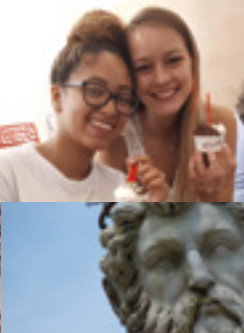


WHY ITALY?

- Home to some of the world's richest ancient ruins, art and antiquities
- Italy has more UNESCO World Heritage Sites than any other country in the world
- Large international student community
- Hands-on art, science and culinary studies courses
- Breathtaking natural beauty
- Amazing cuisine

"I had the best time here. I felt like I got to experience how the Italians live and learn - not only more about different cultures and customs around the world - but also myself as well. This experience has allowed me to become more confident in myself and to step out of my comfort zone and do things that I could never dream about doing."

- Bobby G. / St. Xavier University



FLORENCE

WHY FLORENCE?

HISTORIC • ENCHANTING • TRADITIONAL • ARTISTIC

- Breathtaking beauty
- International student community
- An artistic and social environment
- 45-minute train ride to the beach



POPULATION

381,000



WEATHER AVERAGES

JANUARY: HIGH 49°F / LOW 35°F

JULY: HIGH 89°F / LOW 63°F

“I had such an amazing experience in Florence with API. It was amazing how much we received for the price we paid. Everyone should go abroad with API!”

- Nicole S. / University of Texas at Austin



EXCURSIONS

INCLUDED WITH PROGRAM FEE

Cinque Terre [SUMMER 1](#)

Pompeii, Sorrento, Capri [SUMMER 2](#)

Rome [SUMMER 1 & 2](#)

Tuscany [JANUARY / SUMMER 2](#)

Venice [SUMMER 1](#)

Verona [SUMMER 1](#)



SEMESTER AND YEAR PROGRAMS

ARE AVAILABLE IN FLORENCE

Visit apiabroad.com to explore all of our semester and year program options.



UNIVERSITIES

LORENZO DE' MEDICI
THE ITALIAN INTERNATIONAL INSTITUTE

POLIMODA
INTERNATIONAL INSTITUTE OF
FASHION DESIGN AND MARKETING



HOUSING

APARTMENTS

- Includes internet access
- Discounted meal plan available
- Visit apiabroad.com for photos and additional housing information



SCHOLARSHIP DEADLINE SUMMER APRIL 1

Scan the QR code with your smart phone's camera and go directly to the API Florence webpage and **start your application today!**

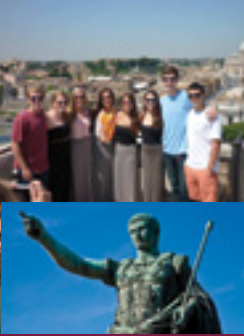




VISIT **APIABROAD.COM** FOR COURSE OFFERINGS AND MORE DETAILED PROGRAM INFORMATION.

UNIVERSITY AND PROGRAM NAME	CREDITS EARNED	MINIMUM G.P.A.	LANGUAGE OF INSTRUCTION	LANGUAGE LEVEL	SUBJECTS OFFERED	PROGRAM FEES	APPLICATION DEADLINES
LORENZO DE' MEDICI - THE ITALIAN INTERNATIONAL INSTITUTE							
Jan Term at Lorenzo de' Medici	3-7	2.8	Italian English	All levels	<ul style="list-style-type: none"> • Business • History • Visual Arts • Communications • Italian Language • Health Sciences • Social Sciences 	ONE COURSE JANUARY \$4,380 TWO COURSES JANUARY \$5,480	OCTOBER 15
Business, Arts, Humanities, Italian Language and Culture	3-6	2.8	Italian English	All levels	<ul style="list-style-type: none"> • Architecture • History • Social Sciences • Business • Italian Language • Visual Arts • Communications • Literature • Health Sciences • Religious Studies 	ONE COURSE SUMMER 1 OR 2 \$4,480 SUMMER 1 AND 2 \$8,980 TWO COURSES SUMMER 1 OR 2 \$5,480 SUMMER 1 AND 2 \$9,980	MARCH 15
POLIMODA - INTERNATIONAL INSTITUTE OF FASHION DESIGN AND MARKETING / PARSONS PARIS - THE NEW SCHOOL							
Luxury Design Management in Paris and Florence	6	2.75	English	All levels	<ul style="list-style-type: none"> • Luxury Design Management 	SUMMER 1 \$7,880	MARCH 15

Excursions, courses, entry requirements, dates and fees are subject to change. Students are encouraged to visit apiabroad.com for the most current information and official program dates for each session.



ROME

WHY ROME?

HISTORIC • INSPIRING • COSMOPOLITAN • ENERGIZING

- Artists' and art historians' dream with layer upon layer of history
- Large student population
- Friendly, warm, inviting people
- Roman ruins and churches



POPULATION

3,800,000



WEATHER AVERAGES

JULY: HIGH 84°F / LOW 65°F

"I did not realize the level of support that API offered over direct enrollment. Seeing my peers that did not study through API made me grateful for doing so!"

- Austin S. / Quinnipiac University



EXCURSIONS

INCLUDED WITH PROGRAM FEE

Amalfi Coast: Pompeii, Sorrento, Capri **SUMMER 2**

Florence **SUMMER 1**

Lazio and Umbria **SUMMER 1 & 2**

Tuscany **MAYMESTER**



SEMESTER AND YEAR PROGRAMS

ARE AVAILABLE IN ROME

Visit apiabroad.com to explore all of our semester and year program options.



UNIVERSITIES

JOHN CABOT UNIVERSITY

LORENZO DE' MEDICI

THE ITALIAN INTERNATIONAL INSTITUTE



HOUSING

APARTMENTS

- Includes internet access
- A partial meal plan (20 meals) is included with the John Cabot University program
- Visit apiabroad.com for photos and additional housing information



SCHOLARSHIP DEADLINE

SUMMER APRIL 1



Scan the QR code with your smart phone's camera and go directly to the API Rome webpage and **start your application today!**

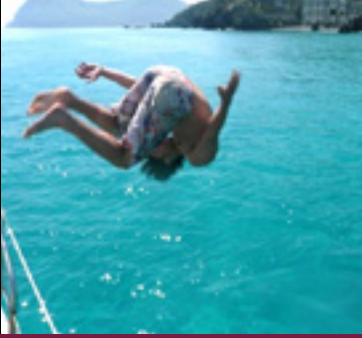




VISIT [APIABROAD.COM](https://apiabroad.com) FOR COURSE OFFERINGS AND MORE DETAILED PROGRAM INFORMATION.

UNIVERSITY AND PROGRAM NAME	CREDITS EARNED	MINIMUM G.P.A.	LANGUAGE OF INSTRUCTION	LANGUAGE LEVEL	SUBJECTS OFFERED			PROGRAM FEES	APPLICATION DEADLINES
JOHN CABOT UNIVERSITY									
Full Curriculum at John Cabot University	3-6	2.7	Italian English	All levels	<ul style="list-style-type: none"> • Architecture • Business • Communications • Computer 	<ul style="list-style-type: none"> • Sciences • History • Italian Language • Literature 	<ul style="list-style-type: none"> • Mathematics • Social Sciences • Visual Arts 	ONE COURSE SUMMER 1 OR 2 \$6,480 SUMMER 1 AND 2 \$11,780 TWO COURSES SUMMER 1 OR 2 \$7,680 SUMMER 1 AND 2 \$13,880	MARCH 15
LORENZO DE' MEDICI - THE ITALIAN INTERNATIONAL INSTITUTE									
Business, Arts and Humanities, and Italian Language and Culture	3-6	2.8	Italian English	All levels	<ul style="list-style-type: none"> • Business • Communications • Cultural Studies • Engineering 	<ul style="list-style-type: none"> • Environmental Studies • Health Sciences • History 	<ul style="list-style-type: none"> • Italian Language • Religious Studies • Social Sciences • Visual Arts 	ONE COURSE SUMMER 1 OR 2 \$4,980 SUMMER 1 AND 2 \$8,980 TWO COURSES SUMMER 1 OR 2 \$5,980 SUMMER 1 AND 2 \$10,980	MARCH 15
Maymester Film Studies in Rome	3	2.8	English	All levels	<ul style="list-style-type: none"> • Communications • Visual Arts 			MAYMESTER \$5,480	FEBRUARY 1

Excursions, courses, entry requirements, dates and fees are subject to change. Students are encouraged to visit apiabroad.com for the most current information and official program dates for each session.



SYRACUSE

WHY SYRACUSE?

COASTAL • HISTORIC • IMMERSIVE • NATURAL

- A warm-welcoming and lively city on the south-eastern coast of Sicily
- Ancient civilizations and cultures combined
- Wonderful climate and beaches
- A treasure trove for adventurous souls, nature lovers and culture vultures



POPULATION

121,000



WEATHER AVERAGES

JANUARY: HIGH 60°F / LOW 46°F

JULY: HIGH 85°F / LOW 68°F



EXCURSIONS

INCLUDED WITH PROGRAM FEE

Ancient Necropolis Pantalica [SUMMER](#)

Mt. Etna and Surrounding Towns [SUMMER](#)

Noto • Baroque City & Vendicari • Marin Reserve
[JAN TERM](#) / [MAYMESTER](#) / [SUMMER](#)



SEMESTER AND YEAR PROGRAMS

ARE AVAILABLE IN SYRACUSE

Visit apiabroad.com to explore all of our semester and year program options.



SCHOLARSHIP DEADLINE

SUMMER APRIL 1



UNIVERSITY

SYRACUSE ACADEMY



HOUSING

APARTMENTS • HOST FAMILIES

- Includes internet access
- Host family housing includes 2 meals per day and laundry service
- Visit apiabroad.com for photos and additional housing information



VISIT APIABROAD.COM
FOR COURSE OFFERINGS AND MORE DETAILED PROGRAM INFORMATION.

UNIVERSITY AND PROGRAM NAME	CREDITS EARNED	MINIMUM G.P.A.	LANGUAGE OF INSTRUCTION	LANGUAGE LEVEL	SUBJECTS OFFERED	PROGRAM FEES	APPLICATION DEADLINES
SYRACUSE ACADEMY							
Mediterranean Field Studies in Sicily	3-9	2.75	English	All levels	<ul style="list-style-type: none"> • Cultural Studies • Environmental Studies • Health Sciences • Italian Language • Literature • Social Sciences • Visual Arts 	SUMMER \$4,500 - \$7,400	MARCH 15
Jan Term in Sicily	3	2.75	English	All levels	<ul style="list-style-type: none"> • Biological Sciences • Health Sciences • Social Sciences 	JANUARY \$3,700	OCTOBER 15
Maymester in Sicily (Syracuse)	3	2.75	English	All levels	<ul style="list-style-type: none"> • Biological Sciences • Health Sciences • Social Sciences 	MAYMESTER \$3,700	FEBRUARY 1

TAORMINA

WHY TAORMINA?

PICTURESQUE • IMMERSIVE • SERENE • COASTAL

- Breathtaking beauty
- World-renowned beaches
- A myriad of cultural events
- Warm Sicilian hospitality



POPULATION

11,500



WEATHER AVERAGES

JULY: HIGH 83°F / LOW 66°F



EXCURSIONS

INCLUDED WITH PROGRAM FEE

Catania
Marinello Lakes
Mount Etna
Vendicari



SEMESTER AND YEAR PROGRAMS

ARE AVAILABLE IN TAORMINA

Visit apiabroad.com to explore all of our semester and year program options.



UNIVERSITY

BABILONIA
CENTER FOR ITALIAN LANGUAGE AND CULTURE



HOUSING

APARTMENTS • HOST FAMILIES

- Includes internet access
- Some meals included with host families
- Visit apiabroad.com for photos and additional housing information.



SCHOLARSHIP DEADLINE SUMMER APRIL 1



VISIT APIABROAD.COM
FOR COURSE OFFERINGS AND MORE
DETAILED PROGRAM INFORMATION.

"I loved the fact that API took us on so many different kinds of excursions and events. It made me feel like I got to fully experience Italian culture."

- Madeline R. / University of Arkansas at Little Rock

UNIVERSITY AND PROGRAM NAME	CREDITS EARNED	MINIMUM G.P.A.	LANGUAGE OF INSTRUCTION	LANGUAGE LEVEL	SUBJECTS OFFERED	PROGRAM FEES	APPLICATION DEADLINES
BABILONIA - CENTER FOR ITALIAN LANGUAGE AND CULTURE							
Italian Language and Culture in Sicily	3-6	2.75	Italian English	All levels	<ul style="list-style-type: none"> • Cultural Studies • History • Humanities • Italian Language • Literature • Social Sciences 	SUMMER 2-WEEKS \$4,400 SUMMER 4-WEEKS \$6,540 SUMMER 6-WEEKS \$7,830 SUMMER 8-WEEKS \$9,450	MARCH 15



TUSCANIA

WHY TUSCANIA?

CULTURAL • HISTORIC • IMMERSIVE • WALKABLE

- Experience authentic Italy at its best
- Exceptional opportunities for cultural immersion
- Only 25 minutes away from the Mediterranean Sea
- Ancient town embracing modern culture and art



POPULATION

8,500



WEATHER AVERAGES

JULY: HIGH 84°F / LOW 58°F



EXCURSIONS

INCLUDED WITH PROGRAM FEE

Amalfi Coast: Pompeii, Sorrento, Capri [SUMMER 2](#)

Florence [SUMMER 1](#)

Lazio and Umbria [SUMMER 1 & 2](#)

Rome [SUMMER 1 & 2](#)



SEMESTER AND YEAR PROGRAMS

ARE AVAILABLE IN TUSCANIA

Visit apiabroad.com to explore all of our semester and year program options.



SCHOLARSHIP DEADLINE

SUMMER APRIL 1



UNIVERSITY

LORENZO DE' MEDICI
THE ITALIAN INTERNATIONAL INSTITUTE



HOUSING

APARTMENTS • HOST FAMILIES

- Includes internet access
- Host family housing includes 3 meals per day and laundry service
- Visit apiabroad.com for photos and additional housing information



VISIT APIABROAD.COM
FOR COURSE OFFERINGS AND MORE
DETAILED PROGRAM INFORMATION.

UNIVERSITY AND PROGRAM NAME	CREDITS EARNED	MINIMUM G.P.A.	LANGUAGE OF INSTRUCTION	LANGUAGE LEVEL	SUBJECTS OFFERED	PROGRAM FEES	APPLICATION DEADLINES
LORENZO DE' MEDICI - THE ITALIAN INTERNATIONAL INSTITUTE							
Arts and Humanities and Italian Language and Culture	3-6	2.8	Italian English	All levels	<ul style="list-style-type: none"> • Agriculture • Health Sciences • History • Italian Language • Religious Studies • Social Sciences • Visual Arts 	ONE COURSE SUMMER 1 OR 2 \$4,880 SUMMER 1 AND 2 \$8,780 TWO COURSES SUMMER 1 OR 2 \$5,780 SUMMER 1 AND 2 \$10,580	MARCH 15
Archaeology Field School	6	2.8	English	All levels	<ul style="list-style-type: none"> • Archaeology 	SUMMER \$6,880	APRIL 1



POLAND



WHY POLAND?

- Kraków is the cultural hub of Poland
- Witness Poland's early role in the European Union and see remnants of Poland's communist past
- Mid-sized city with abundance of cultural activities
- Jagiellonian University is the second oldest university in Central Europe

PARTNER UNIVERSITY

KRAKÓW

Jagiellonian University of Kraków



KRAKÓW

WHY KRAKÓW?

LIVELY • AFFORDABLE • MEDIEVAL • NATURAL

- A very walkable and compact city center
- Youthful and energetic vibe with a student population of 150,000
- Kraków's structures survived World War II
- Close to the Tatra Mountains – great for hiking and skiing



POPULATION

770,000



WEATHER AVERAGES

JULY: HIGH 71°F / LOW 55°F



EXCURSIONS

INCLUDED WITH PROGRAM FEE

- Dunajec Canyon
- Oswiecim (Auschwitz)
- Wieliczka Salt Mine
- Warsaw
- Zakopane



SEMESTER AND YEAR PROGRAMS

ARE AVAILABLE IN KRAKÓW

Visit apiabroad.com to explore all of our semester and year program options.



UNIVERSITY

JAGIELLONIAN UNIVERSITY OF KRAKÓW



HOUSING

DORMS

- Includes internet access
- Transit pass included
- Visit apiabroad.com for photos and additional housing information



SCHOLARSHIP DEADLINE SUMMER APRIL 1

UNIVERSITY AND PROGRAM NAME	CREDITS EARNED	MINIMUM G.P.A.	LANGUAGE OF INSTRUCTION	LANGUAGE LEVEL	SUBJECTS OFFERED	PROGRAM FEES	APPLICATION DEADLINES
JAGIELLONIAN UNIVERSITY OF KRAKÓW							
Polish Language and Culture Studies	5-9	2.75	Polish English	All levels	<ul style="list-style-type: none"> • Cultural Studies • Polish Language • History • Religious Studies • Social Sciences • Visual Arts 	SUMMER \$4,680	APRIL 1



PORTUGAL



WHY PORTUGAL?

- Lisbon is Europe's "Coolest City" according to CNN
- European City of the Year - 2012
- Vibrant arts and music scene
- Great food and nightlife
- Breathtaking natural beauty
- One of the most affordable and safest cities in Europe

PARTNER UNIVERSITIES

LISBON

- Instituto Universitário de Lisboa
- Universidade Nova de Lisboa



LISBON

WHY LISBON?

VIBRANT • INEXPENSIVE • COASTAL • INSPIRING

- Old world tradition and charm
- One of the most affordable and undiscovered of Europe's great capitals
- Close to the beach
- Take courses at a top Lisbon university



POPULATION

11,100



WEATHER AVERAGES

JANUARY: HIGH 53°F / LOW 42°F

JULY: HIGH 83°F / LOW 66°F



EXCURSIONS

INCLUDED WITH PROGRAM FEE

Lagos [SUMMER 2](#)

Porto [SUMMER 1 & 3](#)

Sintra [SUMMER 1, 2 & 3](#)



SEMESTER AND YEAR PROGRAMS

ARE AVAILABLE IN LISBON

Visit apiabroad.com to explore all of our semester and year program options.



SCHOLARSHIP DEADLINE

SUMMER APRIL 1



UNIVERSITIES

INSTITUTO UNIVERSITÁRIO DE LISBOA
UNIVERSIDADE NOVA DE LISBOA



HOUSING

APARTMENTS

- Includes internet access
- Visit apiabroad.com for photos and additional housing information



VISIT APIABROAD.COM
FOR COURSE OFFERINGS AND MORE
DETAILED PROGRAM INFORMATION.

UNIVERSITY AND PROGRAM NAME	CREDITS EARNED	MINIMUM G.P.A.	LANGUAGE OF INSTRUCTION	LANGUAGE LEVEL	SUBJECTS OFFERED	PROGRAM FEES	APPLICATION DEADLINES
INSTITUTO UNIVERSITÁRIO DE LISBOA							
Jan Term in Lisbon	6	2.5	Portuguese English	All levels	<ul style="list-style-type: none"> • Business • Communications 	JANUARY \$4,180	OCTOBER 15
Business Studies	3-6	2.8	English	All levels	<ul style="list-style-type: none"> • Business • Social Sciences • Communications 	SUMMER 1, 2 OR 3 2 SESSIONS \$4,580 \$8,280	APRIL 1
UNIVERSIDADE NOVA DE LISBOA							
Portuguese Intensive Language Studies	4	2.5	Portuguese	All levels	<ul style="list-style-type: none"> • Portuguese Language 	SUMMER \$3,980	APRIL 1



SCOTLAND



WHY SCOTLAND?

- Year-round sporting and cultural activities
- Beautiful natural scenery
- Warm and welcoming people
- Edinburgh is a very cosmopolitan city surrounded by a dramatic landscape of mountains, valleys and lochs
- Stirling is the ancient capital of Scotland and home of William Wallace

PARTNER UNIVERSITIES

EDINBURGH

University of Edinburgh

STIRLING

University of Stirling



EDINBURGH

WHY EDINBURGH?

LUSH • RUSTIC • HISTORIC • WALKABLE

- World famous festivals
- Year-round sporting and cultural activities including comedy, theater, literature, film, dance, music, as well as rugby internationals, football, ice hockey and tennis
- Cosmopolitan city surrounded by a dramatic landscape of mountains, valleys and lochs
- Voted "Best City in the UK" (The Telegraph)



POPULATION

465,000



WEATHER AVERAGES

JULY: HIGH 67°F / LOW 52°F



EXCURSIONS

INCLUDED WITH PROGRAM FEE

Eastern Highlands [SUMMER 2](#)

Loch Ness and the Western Highlands [SUMMER 1](#)

Stirling [SUMMER 1 & 2](#)



SEMESTER AND YEAR PROGRAMS

ARE AVAILABLE IN EDINBURGH

Visit apiabroad.com to explore all of our semester and year program options.



SCHOLARSHIP DEADLINE

SUMMER APRIL 1



UNIVERSITY

UNIVERSITY OF EDINBURGH



HOUSING

DORMS

- Includes internet access
- Dorms have bedding linens included
- Some meals provided with the Parliamentary program
- Visit apiabroad.com for photos and additional housing information



VISIT APIABROAD.COM

FOR COURSE OFFERINGS AND MORE DETAILED PROGRAM INFORMATION.

UNIVERSITY AND PROGRAM NAME	CREDITS EARNED	MINIMUM G.P.A.	LANGUAGE OF INSTRUCTION	SUBJECTS OFFERED	PROGRAM FEES	APPLICATION DEADLINES
UNIVERSITY OF EDINBURGH						
Film, International Relations and Sports Studies	2-4	3.0	English	<ul style="list-style-type: none"> • Cultural Studies • Education • Philosophy • Social Sciences • Visual Arts 	<p>SUMMER 1 OR 2 2 SESSIONS \$7,180 \$13,880</p> <p>LEARNING ACROSS THE CURRICULUM: ON FOOT THROUGH EDINBURGH</p> <p>SUMMER 2 \$6,380</p>	<p>SUMMER 1 MARCH 15</p> <p>SUMMER 2 APRIL 15</p>

STIRLING

WHY STIRLING?

HISTORIC • THRIVING • ENTERTAINING • NATURAL

- Over 300 subject areas to choose from
- Top rated research departments
- Small town with large student population and a vibrant nightlife
- Central location between Edinburgh, Glasgow and the Scottish Highlands



POPULATION

93,000



WEATHER AVERAGES

JULY: HIGH 68°F / LOW 52°F



EXCURSIONS

INCLUDED WITH PROGRAM FEE

- Eastern Highlands [SUMMER 2](#)
- Edinburgh [SUMMER 1 & 2](#)
- Glasgow [SUMMER 1 & 2](#)
- Loch Ness and the Western Highlands [SUMMER 1](#)
- Saint Andrews [SUMMER 1 & 2](#)



SEMESTER AND YEAR PROGRAMS

ARE AVAILABLE IN STIRLING

Visit [apiabroad.com](#) to explore all of our semester and year program options.



SCHOLARSHIP DEADLINE

SUMMER APRIL 1



UNIVERSITY

UNIVERSITY OF STIRLING



HOUSING

DORMS

- Includes internet access and bedding linens
- Visit [apiabroad.com](#) for photos and additional housing information



VISIT [APIABROAD.COM](#)

FOR COURSE OFFERINGS AND MORE DETAILED PROGRAM INFORMATION.

UNIVERSITY AND PROGRAM NAME	CREDITS EARNED	MINIMUM G.P.A.	LANGUAGE OF INSTRUCTION	SUBJECTS OFFERED			PROGRAM FEES	APPLICATION DEADLINES
UNIVERSITY OF STIRLING								
Full Curriculum at the University of Stirling	3-12	3.0	English	<ul style="list-style-type: none"> • Architecture • Business • Communications • Cultural Studies 	<ul style="list-style-type: none"> • Education • History • Literature • Political Science 	<ul style="list-style-type: none"> • Religious Studies • Social Sciences • Visual Arts 	SUMMER 1 \$5,955 SUMMER 2 \$5,955 9 CREDITS TWO SESSIONS \$10,425 12 CREDITS TWO SESSIONS \$11,425	APRIL 1



SPAIN





PARTNER UNIVERSITIES

BARCELONA

ESADE Business School
 Universitat Autònoma de Barcelona
 Universitat de Barcelona
 Universitat Pompeu Fabra

GRANADA

Universidad de Granada

MADRID

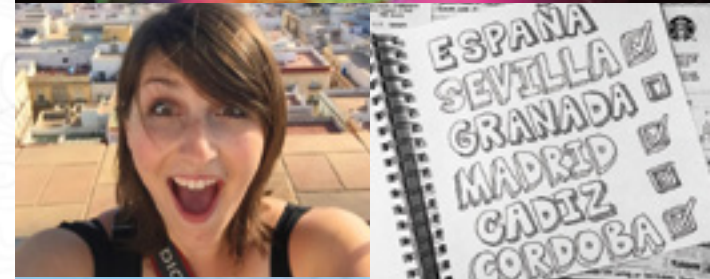
Universidad Nebrija

SALAMANCA

Universidad de Salamanca

SEVILLE

Universidad de Sevilla



WHY SPAIN?

- Gaudí architecture and Catalanian culture in Barcelona
- Arabic influence and architecture in Granada
- Cosmopolitan atmosphere and great museums in Madrid
- Salamanca is home to one of the oldest and most prestigious universities in Europe

“Choosing to study in Spain with API was the best decision I’ve ever made. I met the most amazing people, saw places I had only seen in pictures and had some of the best days of my life.”

- Melissa P. / University of New Hampshire





BARCELONA

WHY BARCELONA?

UNIQUE • INSPIRATIONAL • NATURAL • OCEAN

- Incredible Gaudí architecture
- Located on the Mediterranean Sea
- Catalan language and culture
- Cosmopolitan city with fabulous art, museums and nightlife



POPULATION

1,605,000



WEATHER AVERAGES

JULY: HIGH 81°F / LOW 66°F

“Choosing to study in Barcelona with API was the best decision I’ve ever made. I met the most amazing people, saw places I had only seen in pictures, and had some of the best days of my life.”

- Melissa P. / University of New Hampshire



EXCURSIONS

INCLUDED WITH PROGRAM FEE

Catalonian Countryside [SUMMER 2](#)

Costa Brava [SUMMER 1](#)

Costa Dourada [SUMMER 2](#)

Island of Mallorca [SUMMER 1](#)

Island of Menorca [SUMMER 2](#)

Sitges [SUMMER 1](#)



SEMESTER AND YEAR PROGRAMS

ARE AVAILABLE IN BARCELONA

Visit apiabroad.com to explore all of our semester and year program options.



SCHOLARSHIP DEADLINE

SUMMER APRIL 1



UNIVERSITIES

ESADE BUSINESS SCHOOL

UNIVERSITAT AUTÒNOMA DE BARCELONA

UNIVERSITAT DE BARCELONA

UNIVERSITAT POMPEU FABRA



HOUSING

APARTMENTS

LOCAL HOST FAMILIES

RESIDENCE HALLS*

- Includes internet access
- Host family housing includes 2 meals per day and laundry service
- Visit apiabroad.com for photos and additional housing information

**Additional fees apply for Barcelona residence halls.*



VISIT APIABROAD.COM

FOR COURSE OFFERINGS AND MORE DETAILED PROGRAM INFORMATION.

Scan the QR code with your smart phone's camera and go directly to the API Barcelona webpage and **start your application today!**





VISIT [APIABROAD.COM](https://apiabroad.com) FOR COURSE OFFERINGS AND MORE DETAILED PROGRAM INFORMATION.

UNIVERSITY AND PROGRAM NAME	CREDITS EARNED	MINIMUM G.P.A.	LANGUAGE OF INSTRUCTION	LANGUAGE LEVEL	SUBJECTS OFFERED		PROGRAM FEES	APPLICATION DEADLINES	
ESADE BUSINESS SCHOOL									
Business and International Studies at ESADE in Barcelona	6	2.75	Spanish English	All levels	<ul style="list-style-type: none"> • Business • Communications • History 	<ul style="list-style-type: none"> • Social Sciences • Spanish Language • Visual Arts 	SUMMER 1 SUMMER 2 TWO SESSIONS	\$7,480 \$7,480 \$13,780	APRIL 1
UNIVERSITAT AUTÒNOMA DE BARCELONA									
Intensive Spanish Language Studies at Universitat Autònoma de Barcelona	6-18	2.75	Spanish	All levels	<ul style="list-style-type: none"> • Cultural Studies 	<ul style="list-style-type: none"> • Spanish Language 	SUMMER 1, 2 OR 3 SUMMER 1 AND 2 SUMMER 2 AND 3 SUMMER 1, 2 AND 3	\$4,980 \$9,180 \$11,880 \$13,380	APRIL 1
Business and International Studies at Universitat Autònoma de Barcelona	6	2.75	Spanish English	All levels	<ul style="list-style-type: none"> • Business • Cultural Studies • History 	<ul style="list-style-type: none"> • Spanish Language • Visual Arts 	SUMMER 1	\$5,480	APRIL 1
UNIVERSITAT DE BARCELONA									
Intensive Spanish Language Studies at Universitat de Barcelona	6	2.5	Spanish	All levels	<ul style="list-style-type: none"> • Cultural Studies 	<ul style="list-style-type: none"> • Spanish Language 	SUMMER 2	\$4,980	APRIL 1
UNIVERSITAT POMPEU FABRA									
Spanish and Catalan Studies at Universitat Pompeu Fabra	6	3.0	Spanish Catalan English	All levels	<ul style="list-style-type: none"> • Architecture • History • Literature • Social Sciences 	<ul style="list-style-type: none"> • Spanish Language • Visual Arts 	SUMMER 1	\$5,880	APRIL 1

Excursions, courses, entry requirements, dates and fees are subject to change. Students are encouraged to visit apiabroad.com for the most current information and official program dates for each session.



GRANADA

WHY GRANADA?

LIVELY • MULTICULTURAL • ARTISTIC • INSPIRING

- Mid-sized town; easy to explore
- Close to Mountains and beach
- Heavy Moorish influence
- City of free tapas!



POPULATION

235,000



WEATHER AVERAGES

JULY: HIGH 92°F / LOW 63°F



SCHOLARSHIP DEADLINE

SUMMER APRIL 1



EXCURSIONS

INCLUDED WITH PROGRAM FEE

- Barcelona [SUMMER 2](#)
- El Escorial [SUMMER 1 & 2](#)
- Granada Coast [SUMMER 2](#)
- Las Alpujarras [SUMMER 1](#)
- Madrid [SUMMER 1 & 2](#)
- San José/Cabo de Gata Natural Park [SUMMER 1](#)
- Toledo [SUMMER 1 & 2](#)



SEMESTER AND YEAR PROGRAMS

ARE AVAILABLE IN GRANADA

Visit apiabroad.com to explore all of our semester and year program options.



VISIT APIABROAD.COM

FOR COURSE OFFERINGS AND MORE DETAILED PROGRAM INFORMATION.



UNIVERSITY

UNIVERSIDAD DE GRANADA



HOUSING

APARTMENTS
LOCAL HOST FAMILIES
RESIDENCIAS

- Includes internet access
- Host family, residencias and shared apartment housing includes 3 meals per day and laundry service*
- Visit apiabroad.com for photos and additional housing information

**Meals may not be included on Sundays and public holidays in shared apartments or residencias.*

UNIVERSITY AND PROGRAM NAME	CREDITS EARNED	MINIMUM G.P.A.	LANGUAGE OF INSTRUCTION	LANGUAGE LEVEL	SUBJECTS OFFERED	PROGRAM FEES	APPLICATION DEADLINES
UNIVERSIDAD DE GRANADA							
Intensive Spanish Language Studies	5-6	2.5	Spanish	All levels	• Spanish Language	SUMMER 1 OR 2 TWO SESSIONS \$4,780 \$7,980	APRIL 1
Spanish Language and Culture Studies	6	2.5	Spanish	Intermediate Advanced Superior	• Business • Cultural Studies • Religious Studies • Social Sciences • Spanish Language • Visual Arts	SUMMER 1 OR 2 TWO SESSIONS \$4,980 \$8,280	APRIL 1



MADRID

WHY MADRID?

GRAND • HISTORIC • LIVELY • METROPOLITAN

- Spain's capital since 1561
- Lively, diverse and cosmopolitan city
- Wonderful array of Spanish cities within 3 hours or less
- Students from all over the world



POPULATION

3,167,000



WEATHER AVERAGES

JANUARY: HIGH 50°F / LOW 37°F

JULY: HIGH 88°F / LOW 76°F



EXCURSIONS

INCLUDED WITH PROGRAM FEE

El Escorial [SUMMER 1 & 2](#)

Granada [JANUARY / SUMMER 1](#)

Salamanca [SUMMER 2](#)

Segovia [SUMMER 1 & 2](#)

Toledo [SUMMER 1 & 2](#)



SEMESTER AND YEAR PROGRAMS

ARE AVAILABLE IN MADRID

Visit apiabroad.com to explore all of our semester and year program options.



SCHOLARSHIP DEADLINE

SUMMER APRIL 1



UNIVERSITY

UNIVERSIDAD NEBRIJA



HOUSING

APARTMENTS • HOST FAMILIES
RESIDENCIAS

- Includes internet access
- Host family housing includes 2 meals per day and laundry service
- Residencia housing includes 3 meals per day, laundry service and daily cleaning of room
- Visit apiabroad.com for photos and additional housing information



VISIT APIABROAD.COM

FOR COURSE OFFERINGS AND MORE DETAILED PROGRAM INFORMATION.

UNIVERSITY AND PROGRAM NAME	CREDITS EARNED	MINIMUM G.P.A.	LANGUAGE OF INSTRUCTION	LANGUAGE LEVEL	SUBJECTS OFFERED	PROGRAM FEES	APPLICATION DEADLINES
UNIVERSIDAD NEBRIJA							
Jan Term in Madrid	6	2.5	Spanish	All levels	• Spanish Language	JANUARY \$4,380	OCTOBER 15
Spanish Language, Humanities and Business Studies	6-12	2.5	Spanish	All levels	• Business • Cultural Studies • Literature • Social Sciences • Spanish Language • Visual Arts	SUMMER 1 OR 2 TWO SESSIONS \$4,780 \$8,280	APRIL 1

Excursions, courses, entry requirements, dates and fees are subject to change. Students are encouraged to visit apiabroad.com for the most current information and official program dates for each session.



SALAMANCA

WHY SALAMANCA?

IMMERSIVE • HISTORIC • FRIENDLY • FESTIVE

- Historical city and home to the oldest university in Spain
- University town with international population
- Home to one of Spain's most beautiful Plaza Mayors
- Less than three hours to Madrid and one hour to Portugal



POPULATION

145,000



WEATHER AVERAGES

JANUARY: HIGH 47°F / LOW 31°F

JULY: HIGH 85°F / LOW 55°F



EXCURSIONS

INCLUDED WITH PROGRAM FEE

- Madrid [SUMMER 1, 2 & 3](#)
- Porto, Portugal [SUMMER 2 & 3](#)
- INTERNATIONAL EXCURSION**
- Santander [SUMMER 2 & 3](#)
- Segovia [SUMMER 1, 2 & 3](#)
- Toledo [SUMMER 1, 2 & 3](#)
- The Way of Saint James [SUMMER 1](#)



SEMESTER AND YEAR PROGRAMS

ARE AVAILABLE IN SALAMANCA

Visit apiabroad.com to explore all of our semester and year program options.



UNIVERSITY

UNIVERSIDAD DE SALAMANCA



HOUSING

HOST FAMILIES
RESIDENCIAS

- Includes internet access
- Host family and residencias include 3 meals per day and laundry service
- Visit apiabroad.com for photos and additional housing information



SCHOLARSHIP DEADLINE SUMMER APRIL 1

UNIVERSITY AND PROGRAM NAME	CREDITS EARNED	MINIMUM G.P.A.	LANGUAGE OF INSTRUCTION	LANGUAGE LEVEL	SUBJECTS OFFERED	PROGRAM FEES	APPLICATION DEADLINES
UNIVERSIDAD DE SALAMANCA							
Short-Term Intensive Language Studies	3-6	2.5	Spanish	All levels	• Spanish Language	TWO-WEEKS \$2,700 - \$3,000 THREE-WEEKS \$3,980 FOUR-WEEKS \$3,400 - \$4,000	8 WEEKS PRIOR TO PROGRAM START DATE
Spanish Language and Culture Studies	5-16	2.5	Spanish English	All levels	• Business • History • Spanish Language • Cultural Studies • Social Sciences • Visual Arts	SUMMER 1 OR 2 \$4,950 SUMMER 3 \$6,180 SUMMER 1 & 2 \$7,980 SUMMER 1 & 3 \$9,280	APRIL 1



SEVILLE

WHY SEVILLE?

TRADITIONAL • CULTURAL • BEAUTIFUL • FLAMENCO

- History and rich Spanish traditions everywhere
- Great weather and only one hour to the beach
- More than 2,000 years of culture and art
- Home to the third largest cathedral in the world



POPULATION

345,150



WEATHER AVERAGES

JANUARY: HIGH 56°F / LOW 41°F
 JULY: HIGH 97°F / LOW 68°F



EXCURSION

INCLUDED WITH PROGRAM FEE

Cádiz [MAYMESTER](#)



SEMESTER AND YEAR PROGRAMS

ARE AVAILABLE IN SEVILLE

Visit [apiabroad.com](#) to explore all of our semester and year program options.



UNIVERSITIES

UNIVERSIDAD DE SEVILLA



HOUSING

HOST FAMILIES

RESIDENCIAS

- Includes internet access
- Host families and most residencias include 3 meals per day and laundry service
- Visit [apiabroad.com](#) for photos and additional housing information



VISIT [APIABROAD.COM](#)

FOR COURSE OFFERINGS AND MORE DETAILED PROGRAM INFORMATION.

UNIVERSITY AND PROGRAM NAME	CREDITS EARNED	MINIMUM G.P.A.	LANGUAGE OF INSTRUCTION	LANGUAGE LEVEL	SUBJECTS OFFERED	PROGRAM FEES	APPLICATION DEADLINES
UNIVERSIDAD DE SEVILLA							
Maymester Differential Equations in Seville	3	2.5	English	All levels	• Engineering • Mathematics	MAYMESTER \$3,980	FEBRUARY 1

Excursions, courses, entry requirements, dates and fees are subject to change. Students are encouraged to visit [apiabroad.com](#) for the most current information and official program dates for each session.

LATIN AMERICA

ARGENTINA

BUENOS AIRES 79

CHILE

SANTIAGO 82

VALPARAÍSO 83

COSTA RICA

SAN JOAQUÍN DE FLORES 85

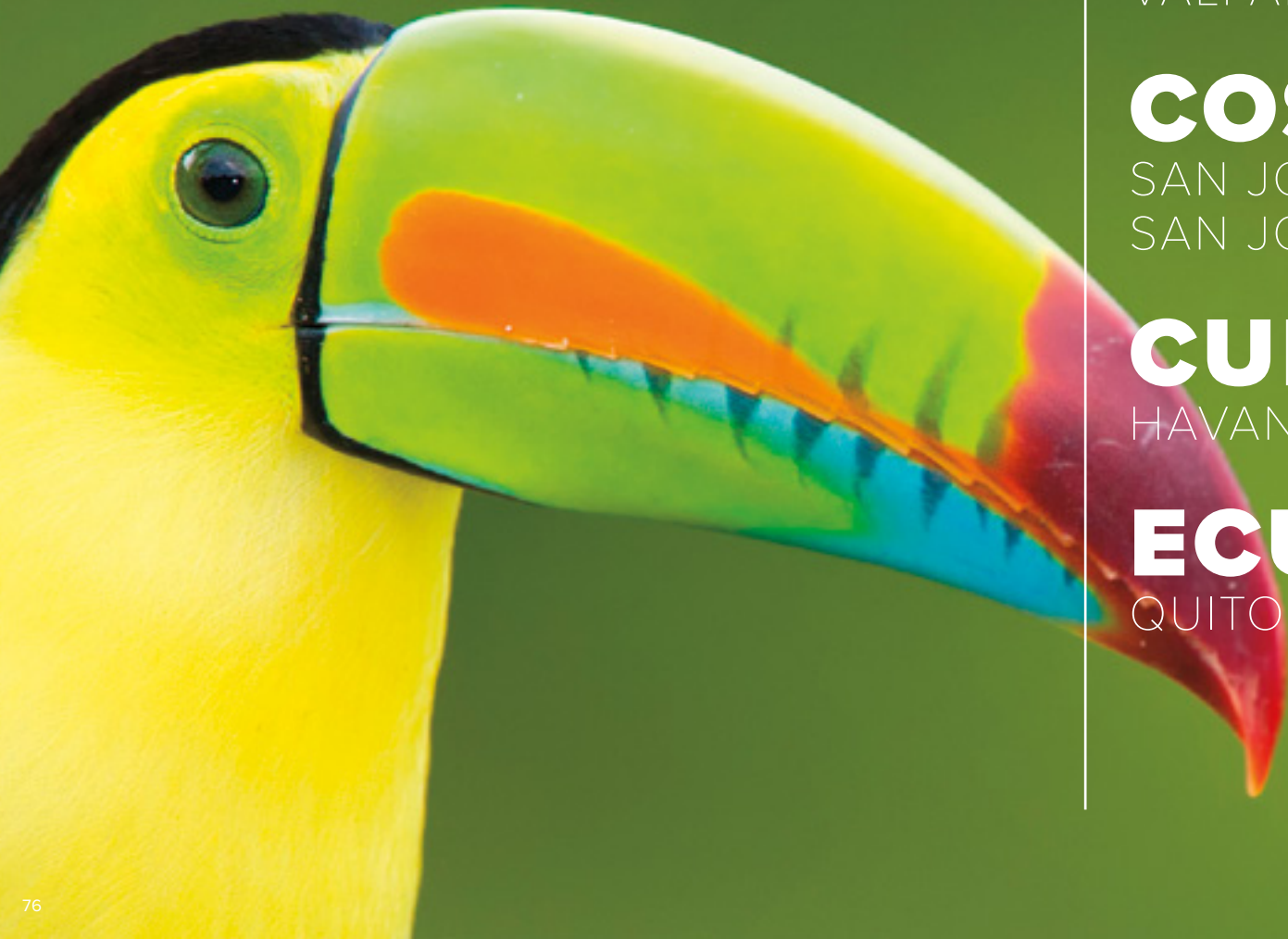
SAN JOSÉ 86

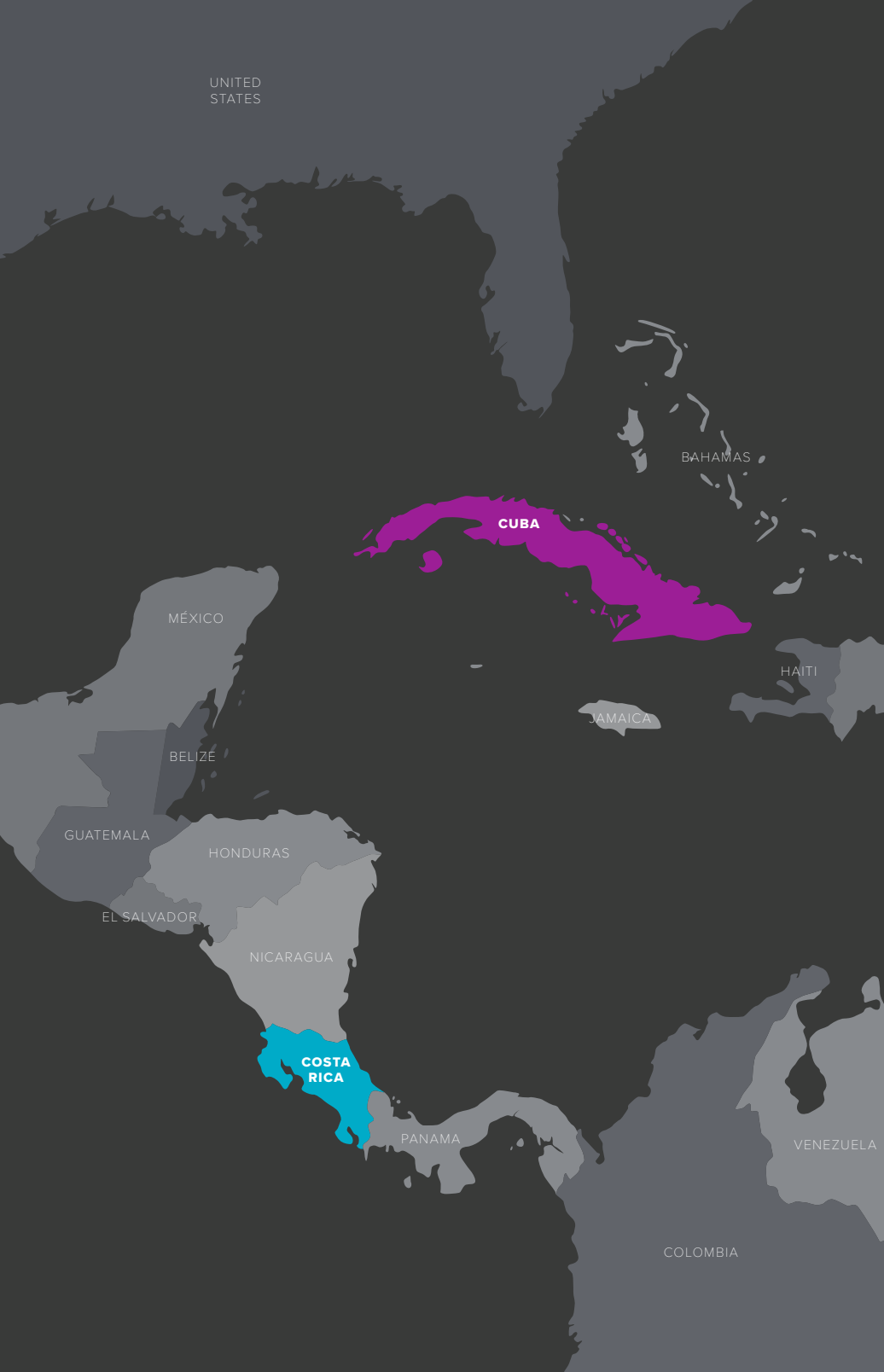
CUBA

HAVANA 89

ECUADOR

QUITO 91







ARGENTINA



WHY ARGENTINA?

- Enjoy living in Latin America's 2nd-largest country, with all of the regional diversity and natural beauty that it has to offer
- Buenos Aires is the social, cultural and economic heart of Argentina
- Prestigious private universities with strong reputations throughout Latin America

PARTNER UNIVERSITIES

BUENOS AIRES

Universidad de Belgrano



BUENOS AIRES

WHY BUENOS AIRES?

UNIQUE • INSPIRATIONAL • NATURAL • OCEAN

- Buenos Aires is the social, cultural and economic heart of Argentina
- Architectural beauty and often called the "Paris of Latin America"
- Numerous museums, world renowned theaters and tango dance
- Cosmopolitan city with an exciting nightlife and passion for life



POPULATION

2,900,000



WEATHER AVERAGES

JANUARY: HIGH 87°F / LOW 69°F

JULY: HIGH 59°F / LOW 45°F



EXCURSIONS

INCLUDED WITH PROGRAM FEE

Colonia del Sacramento, Uruguay **SUMMER**
INTERNATIONAL EXCURSION

Estancia Visit **SUMMER**



SEMESTER AND YEAR PROGRAMS

ARE AVAILABLE IN BUENOS AIRES

Visit apiabroad.com to explore all of our semester and year program options.



SCHOLARSHIP DEADLINE

SUMMER APRIL 1



UNIVERSITY

UNIVERSIDAD DE BELGRANO



HOUSING

HOST FAMILIES

- Includes internet access
- Host family housing includes 2 meals per day (only 1 on Sunday) and laundry service
- Visit apiabroad.com for photos and additional housing information



"The API Buenos Aires staff was absolutely wonderful. It was obvious that they cared deeply about the students and did everything possible to make us feel welcome and comfortable. It felt more like becoming a part of a family than just participating in a program!" *- Eleanor O. / Southwestern University*

Scan the QR code with your smart phone's camera and go directly to the API Buenos Aires webpage and start your application today!





VISIT APIABROAD.COM FOR COURSE OFFERINGS AND MORE DETAILED PROGRAM INFORMATION.

UNIVERSITY AND PROGRAM NAME	CREDITS EARNED	MINIMUM G.P.A.	LANGUAGE OF INSTRUCTION	LANGUAGE LEVEL	SUBJECTS OFFERED	PROGRAM FEES	APPLICATION DEADLINES
UNIVERSIDAD DE BELGRANO							
Argentine and Latin American Studies	6	2.5	Spanish	Intermediate Advanced	• Cultural Studies • Spanish Language	SUMMER 2 \$5,180	MARCH 15
Intensive Language Studies	6-21	2.5	Spanish	All levels	• Spanish Language	SUMMER 1 OR 2 \$3,980 SUMMER 1 & 2 \$7,480 SUMMER 2 & 3 \$7,480 SUMMER 1, 2 & 3 \$10,580	MARCH 15
Medical Immersion Program for Spanish Speakers	4-6	2.5	Spanish	Intermediate Advanced Superior	• Health Sciences • Spanish Language	SUMMER 2 \$5,600	MARCH 15
Teaching Internship for Spanish Speakers	6	2.5	Spanish	Intermediate Advanced Superior	• Education • Spanish Language	SUMMER 1 \$5,750	MARCH 15

Excursions, courses, entry requirements, dates and fees are subject to change. Students are encouraged to visit apiabroad.com for the most current information and official program dates for each session.



CHILE



WHY CHILE?

- Santiago is a dynamic and growing city with a large student population
- Valparaíso is a bustling port city with beautiful Pacific Ocean views, with a relaxed and Bohemian flair
- Temperate climate with incredible seafood
- Easy access to the Pacific Ocean and beautiful beaches as well as mountains

PARTNER UNIVERSITIES

SANTIAGO

Universidad Alberto Hurtado

VALPARAÍSO

Pontificia Universidad Católica de Valparaíso

SANTIAGO

WHY SANTIAGO?

MODERN • PICTURESQUE • DYNAMIC • FRIENDLY

- Chile's capital city close to mountains with skiing, snowboarding, biking and hiking
- Bustling city with modern conveniences
- Beautiful views of the Andes mountains
- Active student population with volunteer options



POPULATION

4,325,000



WEATHER AVERAGES

JANUARY: HIGH 85°F / LOW 54°F



EXCURSIONS

INCLUDED WITH PROGRAM FEE

Valparaíso JANUARY

Vineyard JANUARY



SEMESTER AND YEAR PROGRAMS

ARE AVAILABLE IN SANTIAGO

Visit apiabroad.com to explore all of our semester and year program options.



SCHOLARSHIP DEADLINE

SUMMER APRIL 1



UNIVERSITY

UNIVERSIDAD ALBERTO HURTADO



HOUSING

APARTMENTS • HOST FAMILIES

- Includes internet access
- Host family housing includes 3 meals per day and laundry service
- Visit apiabroad.com for photos and additional housing information



VISIT APIABROAD.COM

FOR COURSE OFFERINGS AND MORE DETAILED PROGRAM INFORMATION.

"Our Resident Director was an absolute angel. She helped with everything we needed, no matter how big or small. It is so comforting to have someone that is so devoted to making us feel comfortable here." - Holly K. / Bryant University



UNIVERSITY AND PROGRAM NAME	CREDITS EARNED	MINIMUM G.P.A.	LANGUAGE OF INSTRUCTION	LANGUAGE LEVEL	SUBJECTS OFFERED	PROGRAM FEES	APPLICATION DEADLINES
UNIVERSIDAD ALBERTO HURTADO							
Jan Term in Santiago	3	2.5	Spanish	Intermediate Advanced Superior	<ul style="list-style-type: none"> • Cultural Studies • Literature • Spanish Language 	JANUARY \$4,380	OCTOBER 1

Excursions, courses, entry requirements, dates and fees are subject to change. Students are encouraged to visit apiabroad.com for the most current information and official program dates for each session.

VALPARAÍSO

WHY VALPARAÍSO?

RELAXED • SCENIC • COASTAL • ARTISTIC

- A bustling port with beautiful Pacific views
- Access to Pablo Neruda's home "La Sebastiana"
- Forty "cerros" or hills to admire and explore
- Seat of the Chilean congress



POPULATION

284,000



WEATHER AVERAGES

JANUARY: HIGH 72°F / LOW 56°F

JULY: HIGH 60°F / LOW 47°F



EXCURSIONS

INCLUDED WITH PROGRAM FEE

Aromatics Farm [SUMMER 1](#)

Island of Cachagua [SUMMER 2](#)

Parque Tricao [SUMMER 2](#)

Santiago [SUMMER 1 & 2](#)

Vineyard [SUMMER 1](#)



SEMESTER AND YEAR PROGRAMS

ARE AVAILABLE IN VALPARAÍSO

Visit apiabroad.com to explore all of our semester and year program options.



UNIVERSITY

PONTIFICIA UNIVERSIDAD CATÓLICA DE VALPARAÍSO



HOUSING

HOST FAMILIES

- Includes internet access
- Host family housing includes 3 meals per day and laundry service
- Visit apiabroad.com for photos and additional housing information



VISIT APIABROAD.COM

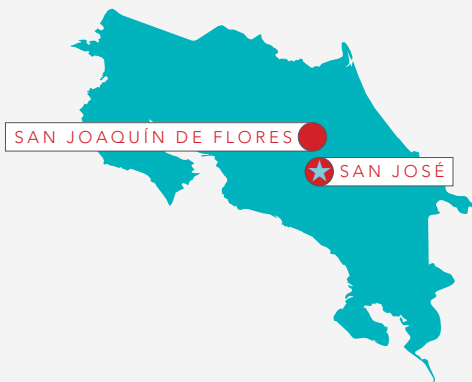
FOR COURSE OFFERINGS AND MORE DETAILED PROGRAM INFORMATION.

UNIVERSITY AND PROGRAM NAME	CREDITS EARNED	MINIMUM G.P.A.	LANGUAGE OF INSTRUCTION	LANGUAGE LEVEL	SUBJECTS OFFERED	PROGRAM FEES	APPLICATION DEADLINES
PONTIFICIA UNIVERSIDAD CATÓLICA DE VALPARAÍSO							
Business Internship for Advanced Spanish Speakers	6	2.5	Spanish	Intermediate Advanced Superior	• Business	SUMMER 1 SUMMER 2 \$5,180 \$5,180	APRIL 1
Chilean Culture and Spanish Language	6-12	2.5	Spanish	All levels	• Cultural Studies • History • Literature • Social Sciences • Spanish Language • Visual Arts	SUMMER 1 SUMMER 2 TWO SESSIONS \$4,980 \$4,980 \$8,980	APRIL 1

Excursions, courses, entry requirements, dates and fees are subject to change. Students are encouraged to visit apiabroad.com for the most current information and official program dates for each session.



COSTA RICA



WHY COSTA RICA?

- Temperate climate in the central valley
- A wide variety of national parks and beaches to enjoy
- Community service and volunteer opportunities
- Warm and welcoming locals who live the “pura vida” life
- Visit active volcanoes, farms and coffee plantations
- Colonial feel in main square of San Joaquín de Flores
- San José voted as the “Hispanic American Capital of Culture”

PARTNER UNIVERSITIES

SAN JOAQUÍN DE FLORES

Instituto San Joaquín de Flores

SAN JOSÉ

International Center for Development Studies
Universidad Veritas

SAN JOAQUÍN DE FLORES

WHY SAN JOAQUÍN DE FLORES?

CHARMING • QUIANT • LAID-BACK • BLOOMING

- Bustling town located 10 miles from San José
- Walking distance to almost everything in town
- 90 minutes to beautiful beaches
- 40 minutes to national parks



POPULATION

7,200



WEATHER AVERAGES

JANUARY: HIGH 76°F / LOW 58°F

JULY: HIGH 77°F / LOW 60°F



EXCURSIONS

INCLUDED WITH PROGRAM FEE

Cartago [SUMMER 1 & 2](#)

Lankester Gardens [SUMMER 1 & 2](#)

Monteverde [SUMMER 1](#)

Río Celeste and Guanacaste [SUMMER 1 & 2](#)

San José [SUMMER 1 & 2](#)

Volcán Arenal [SUMMER 2](#)



SEMESTER AND YEAR PROGRAMS

ARE AVAILABLE IN SAN JOAQUÍN DE FLORES

Visit apiabroad.com to explore all of our semester and year program options.



UNIVERSITY

INSTITUTO SAN JOAQUÍN DE FLORES



HOUSING

HOST FAMILIES • RESIDENCIAS ICDS ONLY

- Includes internet access
- Host family housing includes 2 meals per day and laundry service
- Visit apiabroad.com for photos and additional housing information



VISIT APIABROAD.COM

FOR COURSE OFFERINGS AND MORE DETAILED PROGRAM INFORMATION.

UNIVERSITY AND PROGRAM NAME	CREDITS EARNED	MINIMUM G.P.A.	LANGUAGE OF INSTRUCTION	LANGUAGE LEVEL	SUBJECTS OFFERED			PROGRAM FEES	APPLICATION DEADLINES	
INSTITUTO SAN JOAQUÍN DE FLORES										
Spanish Language and Culture	6-12	3.0	Spanish	Intermediate Advanced Superior	• Biological Sciences	• Environmental Studies	• Performing Arts	SUMMER 1	\$5,280	APRIL 1
					• Cultural Studies	• History	• Social Sciences	SUMMER 2	\$5,580	
							• Spanish Language	TWO SESSIONS	\$9,980	
Advanced Spanish for Medical Professions	6-12	3.0	Spanish English	High Intermediate Advanced Superior	• Health Sciences	• Spanish Language		SUMMER 1	\$5,580	APRIL 1



SAN JOSÉ

WHY SAN JOSÉ?

LIVELY • TROPICAL • PURA VIDA • FESTIVE

- Capital city of Costa Rica
- Temperate climate
- Great museums
- Close proximity to beaches and volcanoes



POPULATION

333,300



WEATHER AVERAGES

JANUARY: HIGH 75°F / LOW 58°F
JULY: HIGH 77°F / LOW 62°F



SCHOLARSHIP DEADLINE

SUMMER APRIL 1



EXCURSIONS

INCLUDED WITH PROGRAM FEE

- Carara National Park [SUMMER 1](#) ICDS
- Monumento Nacional Guayabo and Valle de Orosí [SUMMER 2](#) VERITAS
- Monteverde [SUMMER 1 & 2](#) ICDS & VERITAS
- Pacuare/Tortuguero [SUMMER 2](#) ICDS
- Volcán Arenal & Fortuna [SUMMER 1 & 2](#) VERITAS & ICDS
- Volcán Arenal National Park and Valle de Orosí [SUMMER 1](#) VERITAS
- Volcán Irazú and Orosí [MAYMASTER](#) / [SUMMER 1](#) VERITAS



SEMESTER AND YEAR PROGRAMS

ARE AVAILABLE IN SAN JOSÉ

Visit apiabroad.com to explore all of our semester and year program options.



UNIVERSITIES

INTERNATIONAL CENTER
FOR DEVELOPMENT STUDIES
UNIVERSIDAD VERITAS



HOUSING

HOST FAMILIES

- Includes internet access
- Host family housing includes 3 meals per day and laundry service
- Visit apiabroad.com for photos and additional housing information



"I thought API was an amazing program and I am so happy that I went through them. I was very pleased with everything and still can't believe how much more was included with API vs. other programs. Be sure you compare the costs and what's included in detail!"

- Ashley V. / North Dakota State University

Scan the QR code with your smart phone's camera and go directly to the API San José webpage and **start your application today!**





VISIT APIABROAD.COM FOR COURSE OFFERINGS AND MORE DETAILED PROGRAM INFORMATION.

UNIVERSITY AND PROGRAM NAME	CREDITS EARNED	MINIMUM G.P.A.	LANGUAGE OF INSTRUCTION	LANGUAGE LEVEL	SUBJECTS OFFERED	PROGRAM FEES	APPLICATION DEADLINES
INTERNATIONAL CENTER FOR DEVELOPMENT STUDIES							
Health Sciences and Shadowing in Costa Rica (San Jose)	3	2.75	English	All levels	<ul style="list-style-type: none"> • Health Sciences • Nursing 	MAYMESTER \$4,680	FEBRUARY 1
Health in Latin America for Spanish Speakers	6	2.75	Spanish English	Intermediate Advanced	<ul style="list-style-type: none"> • Health Sciences • Spanish Language 	SUMMER 2 \$7,480	APRIL 1
Spanish and Sustainability Practices	6	2.75	Spanish English	Intermediate Advanced	<ul style="list-style-type: none"> • Environmental Studies 	SUMMER 1 \$6,880	APRIL 1
UNIVERSIDAD VERITAS							
Multidisciplinary and Environmental Studies	5-8	2.6	Spanish English	All levels	<ul style="list-style-type: none"> • Biomedical Sciences • Business • Communications • Cultural Studies • Environmental Studies • Health Sciences • History • Performing Arts • Social Sciences • Spanish Language • Visual Arts 	TRACK 1 SUMMER 1 OR 2 TWO SESSIONS \$3,880 \$6,680 TRACK 2 SUMMER 1 OR 2 TWO SESSIONS \$4,800 \$8,680	APRIL 1

Excursions, courses, entry requirements, dates and fees are subject to change. Students are encouraged to visit apiabroad.com for the most current information and official program dates for each session.



CUBA



WHY CUBA?

- Incredible cultural experience
- Colonial charm
- Safe and friendly country
- Amazing cuisine
- Cuba has a 99.8% literacy rate
- International art and music festivals

PARTNER UNIVERSITY

HAVANA

Universidad de la Habana

HAVANA



HAVANA

WHY HAVANA?

WELCOMING • HISTORIC • VIBRANT • UNIQUE

- Colonial charm and friendly people
- Inspirational art and music festivals
- One of the oldest universities in the Americas
- Close to the crystal clear waters of the Caribbean



POPULATION

2,106,000



WEATHER AVERAGES

JANUARY: HIGH 78°F / LOW 63°F

JULY: HIGH 89°F / LOW 74°F



EXCURSIONS

INCLUDED WITH PROGRAM FEE

Guanabo Beach [JANUARY](#) / [SUMMER 2](#)

Varadero [SUMMER 1](#)

Viñales [SUMMER 2](#)

Las Terrazas [JANUARY](#) / [SUMMER 2](#)

Trinidad and Playa Girón [SUMMER 1](#)



SEMESTER AND YEAR PROGRAMS

ARE AVAILABLE IN HAVANA

Visit [apiabroad.com](#) to explore all of our semester and year program options.



UNIVERSITY

UNIVERSIDAD DE LA HABANA



HOUSING

RESIDENCIA

- Includes 2 meals per day and laundry service
- Visit [apiabroad.com](#) for photos and additional housing information



VISIT [APIABROAD.COM](#)

FOR COURSE OFFERINGS AND MORE DETAILED PROGRAM INFORMATION.

UNIVERSITY AND PROGRAM NAME	CREDITS EARNED	MINIMUM G.P.A.	LANGUAGE OF INSTRUCTION	LANGUAGE LEVEL	SUBJECTS OFFERED	PROGRAM FEES	APPLICATION DEADLINES
UNIVERSIDAD DE LA HABANA							
Jan Term in Havana	4	3.0	Spanish	All levels	<ul style="list-style-type: none"> • Cultural Studies • Spanish Language • Literature • Visual Arts 	JANUARY \$4,200	OCTOBER 15
Spanish Language and Cuban Culture Studies	4-6	3.0	Spanish English	All levels	<ul style="list-style-type: none"> • Cultural Studies • Spanish Language • Visual Arts 	SUMMER 1 \$4,650 SUMMER 2 \$4,450 TWO SESSIONS \$7,980	APRIL 1



ECUADOR



WHY ECUADOR?

- Temperate climate throughout the year
- Beautiful Andes Mountains
- Colonial Quito city center recognized as a UNESCO World Heritage Site
- Great location to study Spanish - Quiteños are known for speaking slowly and clearly!

PARTNER UNIVERSITY

QUITO

Universidad San Francisco de Quito



QUITO

WHY QUITO?

UNIQUE • INSPIRATIONAL • NATURAL • OCEAN

- Best-preserved historic city center in Latin America
- South America's leading destination
- Strikingly beautiful city surrounded by mountains and volcanoes
- Called 'Florence of America' for its art heritage



POPULATION

2,675,000



WEATHER AVERAGES

JANUARY: HIGH 68°F / LOW 50°F

JULY: HIGH 67°F / LOW 49°F



EXCURSIONS

INCLUDED WITH PROGRAM FEE

Cotopaxi **SUMMER**

Mindo **SUMMER**



SEMESTER AND YEAR PROGRAMS

ARE AVAILABLE IN QUITO

Visit apiabroad.com to explore all of our semester and year program options.



SCHOLARSHIP DEADLINE

SUMMER APRIL 1



UNIVERSITY

UNIVERSIDAD SAN FRANCISCO DE QUITO



HOUSING

HOST FAMILIES

- Includes internet access
- Includes 3 meals per day and laundry service
- Visit apiabroad.com for photos and additional housing information



VISIT APIABROAD.COM

FOR COURSE OFFERINGS AND MORE DETAILED PROGRAM INFORMATION.

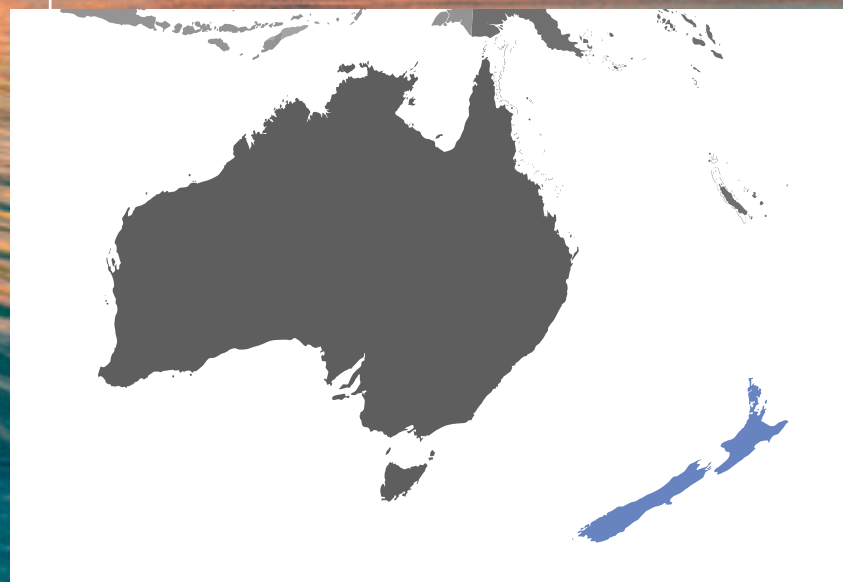
UNIVERSITY AND PROGRAM NAME	CREDITS EARNED	MINIMUM G.P.A.	LANGUAGE OF INSTRUCTION	LANGUAGE LEVEL	SUBJECTS OFFERED	PROGRAM FEES	APPLICATION DEADLINES
UNIVERSIDAD SAN FRANCISCO DE QUITO							
Government Internship for Advanced Spanish Speakers	3	2.5	Spanish	Intermediate Advanced Superior	<ul style="list-style-type: none"> • Business • Communications • Cultural Studies • Education • Environmental Studies • Health Sciences • Social Sciences • Tourism 	SUMMER 1 \$9,180	MARCH 15
Multidisciplinary Studies in Ecuador	3-9	2.5	Spanish English	Intermediate Advanced	<ul style="list-style-type: none"> • Architecture • Biological Sciences • Business • Engineering • Environmental Studies • Performing Arts • Health Sciences • Social Sciences • Spanish Language • Visual Arts 	SUMMER 1 \$9,180	MARCH 15

SOUTH PACIFIC

NEW ZEALAND

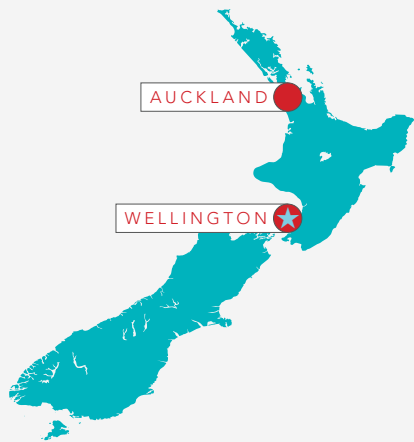
AUCKLAND 94

WELLINGTON 95





NEW ZEALAND



WHY NEW ZEALAND?

- High quality and diverse academics (most NZ universities rank in world top 200)
- One of the most beautiful countries on Earth
- Strong governmental and cultural commitment to environment
- Top academic accreditations
- Haven for outdoor enthusiasts and adventure-seekers

PARTNER UNIVERSITIES

AUCKLAND
University of Auckland

WELLINGTON
Massey University



AUCKLAND

WHY AUCKLAND?

ARTSY • TASTY • ENERGETIC • COASTAL

- World's 3rd highest quality of living
- Largest city in New Zealand
- Known as the "City of Sails"
- Over 100 miles of pristine beaches



POPULATION

1,495,000



WEATHER AVERAGES

JULY: HIGH 58°F / LOW 46°F



EXCURSIONS

INCLUDED WITH PROGRAM FEE

Auckland Orientation Program **SUMMER**

Hobbiton Tour **SUMMER**

Rugby Event **SUMMER**

Sky Tower **SUMMER**

Additional Day Trips **SUMMER**



SEMESTER AND YEAR PROGRAMS

ARE AVAILABLE IN AUCKLAND

Visit apiabroad.com to explore all of our semester and year program options.



UNIVERSITY

UNIVERSITY OF AUCKLAND



HOUSING

HOTELS

- Includes internet access, utilities, linens and kitchen utensils



SCHOLARSHIP DEADLINE

SUMMER APRIL 1



VISIT APIABROAD.COM FOR COURSE OFFERINGS AND MORE DETAILED PROGRAM INFORMATION.

"The overall API experience has exceeded my expectations. My Program Manager was beyond helpful and answered the numerous questions I had prior to leaving. While in New Zealand, my Resident Director was so much fun and made me feel welcome the minute I arrived. I would highly recommend API to anyone looking to study abroad." - Allison K. / Framingham St.

UNIVERSITY AND PROGRAM NAME	CREDITS EARNED	MINIMUM G.P.A.	LANGUAGE OF INSTRUCTION	SUBJECTS OFFERED	PROGRAM FEES	APPLICATION DEADLINES
UNIVERSITY OF AUCKLAND						
Filmmaking in Auckland	3-4	3.0	English	• Performing Arts • Visual Arts	SUMMER 2 \$6,930	MARCH 15



WELLINGTON

WHY WELLINGTON?

CREATIVE • COASTAL • RELAXING • DIVERSE

- New Zealand's capital city
- Often compared to Seattle or Portland
- Cultural heart of New Zealand
- Charm of a European city with a New Zealand way of life



POPULATION

405,000



WEATHER AVERAGES

JULY: HIGH 53°F / LOW 43°F



EXCURSIONS

INCLUDED WITH PROGRAM FEE

Hobbiton Tour SUMMER

Wellington Orientation Program SUMMER

Additional Day Trips SUMMER



SEMESTER AND YEAR PROGRAMS

ARE AVAILABLE IN WELLINGTON

Visit apiabroad.com to explore all of our semester and year program options.



SCHOLARSHIP DEADLINE

SUMMER APRIL 1



UNIVERSITY

MASSEY UNIVERSITY



HOUSING

HOTELS

- Includes internet access, utilities, linens and kitchen utensils



VISIT **APIABROAD.COM**

FOR COURSE OFFERINGS AND MORE DETAILED PROGRAM INFORMATION.

UNIVERSITY AND PROGRAM NAME	CREDITS EARNED	MINIMUM G.P.A.	LANGUAGE OF INSTRUCTION	SUBJECTS OFFERED	PROGRAM FEES	APPLICATION DEADLINES
MASSEY UNIVERSITY						
National Expedition and Internship in Wellington	6-8	2.75	English	<ul style="list-style-type: none"> • Agriculture • Architecture • Biomedical Sciences • Business • Communications • Engineering • Environmental Studies • Health Sciences • Internship • Literature • Performing Arts • Social Sciences • Visual Arts 	<p>SUMMER 1 \$6,980</p> <p>SUMMER 2 \$6,980</p>	MARCH 1

Excursions, courses, entry requirements, dates and fees are subject to change. Students are encouraged to visit apiabroad.com for the most current information and official program dates for each session.

OVERVIEW OF ALL **API PARTNER INSTITUTIONS**

ASIA

BHUTAN

THIMPHU

Royal Thimphu College

CHINA

SHANGHAI

East China Normal University

UNITED ARAB EMIRATES

SHARJAH

American University of Sharjah

EUROPE

CROATIA

DUBROVNIK

Libertas International University

CZECH REPUBLIC

PRAGUE

Charles University

VSE University of Economics, Prague

ENGLAND

HARLAXTON

Harlaxton College

LEEDS

University of Leeds

LONDON

Florida State University - FSU London Study Center

London School of Economics

University of the Arts London

University College London

University of Westminster

FRANCE

CAEN

Université de Caen, Basse-Normandie

GRENOBLE

Grenoble École de Management

Sciences Po Grenoble

Université Grenoble Alpes (CUEF)

PARIS

Cours de Civilisation Française de la Sorbonne

Institut Catholique de Paris

Paris School of Business

Parsons Paris - The New School

Université Paris Dauphine

Université Paris Diderot

GERMANY

BERLIN

Freie Universität Berlin (FU-BEST/FUBiS)

Humboldt-Universität zu Berlin

HUNGARY

BUDAPEST

Corvinus University of Budapest

ICELAND

REYKJAVÍK

Reykjavík University

IRELAND

CORK

University College Cork - National University of Ireland

DUBLIN

Maynooth University

Trinity College Dublin

University College Dublin

GALWAY

National University of Ireland, Galway

LIMERICK

University of Limerick

ITALY

3 CITIES

Lorenzo de' Medici - The Italian International Institute

FLORENCE

Lorenzo de' Medici - The Italian International Institute

Polimoda - International Institute of

Fashion and Design Marketing

ROME

John Cabot University

Lorenzo de' Medici - The Italian International Institute

SYRACUSE

Syracuse Academy

TAORMINA

Babilonia - Center for Italian Language and Culture

TUSCANIA

Lorenzo de' Medici - The Italian International Institute

POLAND

KRAKÓW

Jagiellonian University of Kraków

PORTUGAL

LISBON

Instituto Universitário de Lisboa

Universidade Nova de Lisboa

SCOTLAND

EDINBURGH

Heriot-Watt University

University of Edinburgh

STIRLING

University of Stirling

23 COUNTRIES / 51 CITIES / 82 INSTITUTIONS

SPAIN

BARCELONA

Elisava – Escola Universitària de Barcelona |

Disseny i Enginyeria

ESADE Business School

Universitat Autònoma de Barcelona

Universitat de Barcelona

Universitat Pompeu Fabra

BILBAO

Universidad de Deusto

Universidad del País Vasco

CÁDIZ

Universidad de Cádiz

GRANADA

Universidad de Granada

MADRID

Suffolk University

Universidad CEU San Pablo

Universidad Complutense de Madrid

Universidad Nebrija

SALAMANCA

Universidad de Salamanca

SEVILLE

Universidad de Sevilla

Universidad Pablo de Olavide

LATIN AMERICA

ARGENTINA

BUENOS AIRES

Universidad de Belgrano

Universidad del Salvador

Universidad Torcuato di Tella

MENDOZA

Universidad de Congreso

CHILE

SANTIAGO

Universidad Adolfo Ibáñez

Universidad Alberto Hurtado

VALPARAÍSO

Pontificia Universidad Católica de Valparaíso

Universidad Técnica Federico Santa María

VIÑA DEL MAR

Universidad Adolfo Ibáñez

COSTA RICA

SAN JOAQUÍN DE FLORES

Instituto San Joaquín de Flores

SAN JOSÉ

International Center for Development Studies

Universidad Veritas

CUBA

HAVANA

Universidad de la Habana

SANTA CLARA

La Universidad Central Marta Abreu de Las Villas

ECUADOR

QUITO

Universidad San Francisco de Quito

SOUTH PACIFIC

AUSTRALIA

BRISBANE

Griffith University

GOLD COAST

Griffith University

MELBOURNE

La Trobe University

SYDNEY

Macquarie University

NEW ZEALAND

AUCKLAND

AUT University

University of Auckland

DUNEDIN

University of Otago

WELLINGTON

Massey University

Victoria University of Wellington

API PROGRAMS BY CLASS STANDING

FRESHMEN ALLOWED

ARGENTINA

BUENOS AIRES

Universidad de Belgrano

CHINA

SHANGHAI

East China Normal University

COSTA RICA

SAN JOAQUÍN DE FLORES

Instituto San Joaquín de Flores

CROATIA

DUBROVNIK

Libertas International University

ENGLAND

HARLAXTON

Harlaxton College

LONDON

London School of Economics

FRANCE

CAEN

Université de Caen, Basse-Normandie

GRENOBLE

Université Grenoble Alpes (CUEF)

PARIS

Cours de Civilisation Française de la Sorbonne

Institut Catholique de Paris

Paris School of Business

Parsons Paris - The New School

GERMANY

BERLIN

Humboldt-Universität zu Berlin

HUNGARY

BUDAPEST

Corvinus University of Budapest

IRELAND

CORK

University College Cork - National University of Ireland

DUBLIN

Maynooth University

University College Dublin

ITALY

ROME

John Cabot University

TAORMINA

Babilonia - Center for Italian Language and Culture

NEW ZEALAND

AUCKLAND

University of Auckland

POLAND

KRAKÓW

Jagiellonian University of Kraków

SPAIN

BARCELONA

Elisava - Escola Universitària de Barcelona |

Disseny i Enginyeria

ESADE Business School

Universitat de Barcelona

BILBAO

Universidad del País Vasco

CÁDIZ

Universidad de Cádiz

GRANADA

Universidad de Granada

MADRID

Universidad Complutense de Madrid

Universidad Nebrija

SALAMANCA

Universidad de Salamanca

SEVILLE

Universidad de Sevilla

Universidad Pablo de Olavide

UNITED ARAB EMIRATES

SHARJAH

American University of Sharjah

SOPHOMORES +

ARGENTINA

BUENOS AIRES

Universidad del Salvador

Universidad Torcuato di Tella

MENDOZA

Universidad de Congreso

AUSTRALIA

BRISBANE

Griffith University

GOLD COAST

Griffith University

MELBOURNE

La Trobe University

SYDNEY

Macquarie University

BHUTAN

THIMPHU

Royal Thimphu College

CHILE

SANTIAGO

Universidad Adolfo Ibáñez

Universidad Alberto Hurtado

VALPARAÍSO

Pontificia Universidad Católica de Valparaíso

Universidad Técnica Federico Santa María

VIÑA DEL MAR

Universidad Adolfo Ibáñez

COSTA RICA

SAN JOSÉ

International Center for Development Studies

Universidad Veritas

CUBA

HAVANA

Universidad de la Habana

SANTA CLARA

La Universidad Central Marta Abreu de Las Villas

CZECH REPUBLIC

PRAGUE

Charles University

VSE University of Economics, Prague

ECUADOR

QUITO

Universidad San Francisco de Quito

ENGLAND

LEEDS

University of Leeds

LONDON

Florida State University - FSU London Study Center

University of the Arts London

University of Westminster

FRANCE

GRENOBLE

Grenoble École de Management

Sciences Po Grenoble

GERMANY

BERLIN

Freie Universität Berlin (FU-BEST/FUBiS)

IRELAND

DUBLIN

University College Dublin

LIMERICK

University of Limerick

ITALY

3 CITIES

Lorenzo de' Medici - The Italian International Institute

FLORENCE

Lorenzo de' Medici - The Italian International Institute

Polimoda - International Institute of
Fashion and Design Marketing

ROME

Lorenzo de' Medici - The Italian International Institute

SYRACUSE

Syracuse Academy

TUSCANIA

Lorenzo de' Medici - The Italian International Institute

NEW ZEALAND

AUCKLAND

AUT University

DUNEDIN

University of Otago

WELLINGTON

Massey University

Victoria University of Wellington

PORTUGAL

LISBON

Instituto Universitário de Lisboa

Universidade Nova de Lisboa

SCOTLAND

EDINBURGH

Heriot-Watt University

University of Edinburgh

STIRLING

University of Stirling

SPAIN

BARCELONA

Universitat Autònoma de Barcelona

BILBAO

Universidad de Deusto

MADRID

Suffolk University

Universidad CEU San Pablo

JUNIORS/SENIORS ONLY

ENGLAND

LONDON

University College London

FRANCE

PARIS

Université Paris Dauphine / Université Paris Diderot

ICELAND

REYKJAVÍK

Reykjavík University

IRELAND

DUBLIN

Trinity College Dublin

GALWAY

National University of Ireland, Galway

SPAIN

BARCELONA

Universitat Pompeu Fabra

GRADUATE COURSES/PROGRAMS

ENGLAND

LONDON

University of Westminster

HUNGARY

BUDAPEST

Corvinus University of Budapest

ICELAND

REYKJAVÍK

Reykjavík University

IRELAND

LIMERICK

University of Limerick

QUARTER PROGRAMS

COSTA RICA

SAN JOSÉ

International Center for Development Studies
Universidad Veritas

ENGLAND

LONDON

University of the Arts London

ITALY

TAORMINA

Babilonia - Center for Italian Language and Culture

SPAIN

MADRID

Universidad Complutense de Madrid

SALAMANCA

Universidad de Salamanca

QUIP CERTIFIED

The **Forum on Education Abroad** is uniquely designated within the field of international education as the organization entrusted to set standards for the field at large by the U.S. Department of Justice.

Following an extensive evaluation process, API was recognized as being in substantial conformity with the Forum's Standards of Good Practice in 2018.

This recognition is a testament to API's commitment to maintaining high-quality programs for our student participants.



PROGRAM ACCREDITATION

All API schools are accredited by ministry of education or equivalent body in their home country and/or by a U.S. school of record.

AACSB

AUSTRALIA

BRISBANE Griffith University
GOLD COAST Griffith University
SYDNEY Macquarie University

CHILE

SANTIAGO Universidad Adolfo Ibáñez
VIÑA DEL MAR Universidad Adolfo Ibáñez

ENGLAND

LEEDS University of Leeds

FRANCE

GRENOBLE Grenoble École de Management

IRELAND

DUBLIN University College Dublin

NEW ZEALAND

AUCKLAND AUT University; Univ. of Auckland
DUNEDIN University of Otago
WELLINGTON Massey Univ.; Victoria Univ.

PORTUGAL

LISBON Instituto Universitário de Lisboa

SCOTLAND

EDINBURGH University of Edinburgh

SPAIN

BARCELONA ESADE Business School
MADRID Suffolk University

UAE

SHARJAH American University of Sharjah

ABET

IRELAND

DUBLIN University College Dublin

UAE

SHARJAH American University of Sharjah

AMBA

ARGENTINA

BUENOS AIRES Universidad Torcuato di Tella

FRANCE

GRENOBLE Grenoble École de Management

ICELAND

REYKJAVÍK Reykjavík University

NEW ZEALAND

AUCKLAND University of Auckland
WELLINGTON Victoria University

PORTUGAL

LISBON Instituto Universitário de Lisboa

SPAIN

BARCELONA ESADE Business School

EPAS

HUNGARY

BUDAPEST Corvinus University of Budapest

ICELAND

REYKJAVÍK Reykjavík University

PORTUGAL

LISBON Instituto Universitário de Lisboa

EQUIS

ENGLAND

LEEDS University of Leeds

FRANCE

GRENOBLE Grenoble École de Management

IRELAND

DUBLIN University College Dublin

NEW ZEALAND

AUCKLAND University of Auckland

SPAIN

BARCELONA ESADE Business School

PROGRAM ACCREDITATION

MIDDLE STATES ACCREDITATION

FRANCE

PARIS Parsons Paris - The New School

IRELAND

DUBLIN University College Dublin

ITALY

FLORENCE Lorenzo de' Medici

ROME John Cabot Univ. / Lorenzo de' Medici

TAORMINA Babilonia

TUSCANIA Lorenzo de' Medici

UAE

SHARJAH American University of Sharjah

NAAB

SPAIN

MADRID Universidad CEU San Pablo

UAE

SHARJAH American University of Sharjah

NASAD

FRANCE

PARIS Parsons Paris - The New School

NEASC

COSTA RICA

SAN JOSÉ Int'l Center for Development Studies, accredited by Fairfield University

SPAIN

MADRID Suffolk University

QUIP

GERMANY

BERLIN FU-BEST

IRELAND

LIMERICK University of Limerick

SPAIN

BARCELONA Universidad Pablo de Olavide

API INTERNATIONAL INTERNSHIPS

*Transcripts provided by school of record, Siena College.
Internships are Middle States Accredited.*

ARGENTINA

BUENOS AIRES

AUSTRALIA

BRISBANE

GOLD COAST

MELBOURNE

SYDNEY

CHILE

SANTIAGO

ENGLAND

BRISTOL

LONDON

IRELAND

DUBLIN

NEW ZEALAND

AUCKLAND

WELLINGTON

SCOTLAND

EDINBURGH

SPAIN

BARCELONA

MADRID

SEVILLE



ADDITIONAL **API OPPORTUNITIES**

STUDY ABROAD PLUS INTERNSHIPS

API offers students the option to participate in an internship while on a semester, academic year, or summer study abroad program. In most cases, students can earn academic credit, though some opportunities are offered without credit. Most internship opportunities are included in the cost of the program, though a few are offered for an additional fee.

ASIA

BHUTAN

THIMPHU

Royal Thimphu College

SEMESTER CREDITS 3 **LANGUAGE** ENGLISH

PLACEMENTS ENVIRONMENTAL ORGANIZATIONS • NGOS

CHINA

SHANGHAI

East China Normal University

SEMESTER CREDITS 4-6 **LANGUAGES** MANDARIN/ENGLISH

PLACEMENTS NGOS

EUROPE

CROATIA

DUBROVNIK

Libertas International University

SEMESTER CREDITS NO CREDIT **LANGUAGE** ENGLISH

PLACEMENTS NGOS • LOCAL NEWS/MEDIA

ENGLAND

LONDON

University of the Arts London

SEMESTER CREDITS NO CREDIT **LANGUAGE** ENGLISH

PLACEMENTS FASHION • FILM STUDIOS • MUSEUMS • THEATERS

University of Westminster

SEMESTER CREDITS 4 **LANGUAGE** ENGLISH

PLACEMENTS WIDE VARIETY OF FIELDS

FRANCE

GRENOBLE

Université Grenoble Alpes (CUEF)

SEMESTER CREDITS 3 **LANGUAGE** FRENCH

PLACEMENTS TEACHING

PARIS

Cours de Civilisation Française de la Sorbonne

Institut Catholique de Paris

Université Paris Dauphine

Université Paris Diderot

SEMESTER CREDITS 3 **LANGUAGES** FRENCH/ENGLISH

PLACEMENTS TEACHING

IRELAND

CORK

University College Cork - National University of Ireland

SEMESTER CREDITS 2.5 **LANGUAGE** ENGLISH

PLACEMENTS WIDE VARIETY OF FIELDS

DUBLIN

University College Dublin

SEMESTER CREDITS NO CREDIT **LANGUAGE** ENGLISH

PLACEMENTS ARCHITECTURE • ENGINEERING

GALWAY

National University of Ireland, Galway

SEMESTER CREDITS 2.5 **LANGUAGE** ENGLISH

PLACEMENTS SERVICE-LEARNING • VOLUNTEER OPPORTUNITIES

LIMERICK

University of Limerick

SEMESTER CREDITS 3 **LANGUAGE** ENGLISH

PLACEMENTS SERVICE-LEARNING • VOLUNTEER OPPORTUNITIES

ITALY

FLORENCE

Lorenzo de' Medici - The Italian International Institute

SEMESTER CREDITS 3 **LANGUAGES** ITALIAN/ENGLISH

PLACEMENTS WIDE VARIETY OF FIELDS

ROME

John Cabot University

SEMESTER CREDITS 3 **LANGUAGES** ITALIAN/ENGLISH

PLACEMENTS BUSINESS • COMMUNICATIONS

Lorenzo de' Medici - The Italian International Institute

SEMESTER CREDITS 3 **LANGUAGES** ITALIAN/ENGLISH

PLACEMENTS FINE ART • MARKETING • PRE-MED/NURSING/HEALTH

TUSCANIA

Lorenzo de' Medici - The Italian International Institute

SEMESTER CREDITS 3 **LANGUAGES** ITALIAN/ENGLISH

PLACEMENTS SERVICE-LEARNING

POLAND

KRAKÓW

Jagiellonian University of Kraków

SEMESTER CREDITS NO CREDIT **LANGUAGES** POLISH/ENGLISH

PLACEMENTS MUSEUMS • VOLUNTEER OPPORTUNITIES

SCOTLAND

EDINBURGH

University of Edinburgh

SEMESTER CREDITS 15-17 **LANGUAGE** ENGLISH

PLACEMENTS GOVERNMENT • LAW • POLITICAL SCIENCE

STIRLING

University of Stirling

SEMESTER CREDITS 3 **LANGUAGE** ENGLISH

PLACEMENTS ENVIRONMENTAL • MARKETING • POLITICS • SPORTS



SPAIN

BILBAO

Universidad de Deusto

SEMESTER CREDITS 4 **LANGUAGES** SPANISH/ENGLISH

PLACEMENTS BUSINESS • EDUCATION • SERVICE-LEARNING

GRANADA

Universidad de Granada

SEMESTER CREDITS 4 **LANGUAGES** SPANISH/ENGLISH

PLACEMENTS BUSINESS • EDUCATION • NGOS

MADRID

Suffolk University

SEMESTER CREDITS 3 **LANGUAGE** ENGLISH

PLACEMENTS BUSINESS • COMMUNICATION • GENDER STUDIES
GOVERNMENT • HISTORY • THEATER • SOCIAL SCIENCES • SCIENCE

SALAMANCA

Universidad de Salamanca

SEMESTER CREDITS 3 **LANGUAGES** SPANISH/ENGLISH

PLACEMENTS TEACHING

LATIN AMERICA

ARGENTINA

BUENOS AIRES

Universidad de Belgrano

SEMESTER CREDITS 3 **LANGUAGE** SPANISH

PLACEMENTS TEACHING

MENDOZA

Universidad de Congreso

SEMESTER CREDITS 3-4 **LANGUAGE** SPANISH

PLACEMENTS WIDE VARIETY OF FIELDS

CHILE

VALPARAÍSO

Pontificia Universidad Católica de Valparaíso

SEMESTER CREDITS 3-6 **LANGUAGE** SPANISH

PLACEMENTS BUSINESS • TOURISM

COSTA RICA

SAN JOSÉ

International Center for Development Studies

SEMESTER CREDITS 3 **LANGUAGES** SPANISH/ENGLISH

PLACEMENTS NGOS

Universidad Veritas

SEMESTER CREDITS 2-3 **LANGUAGES** SPANISH/ENGLISH

PLACEMENTS WIDE VARIETY OF FIELDS

ECUADOR

QUITO

Universidad San Francisco de Quito

SEMESTER CREDITS 3 **LANGUAGE** SPANISH

PLACEMENTS GOVERNMENT • NGOS • SERVICE LEARNING

SOUTH PACIFIC

AUSTRALIA

BRISBANE/GOLD COAST

Griffith University

SEMESTER CREDITS 3-4 **LANGUAGE** ENGLISH

PLACEMENTS WIDE VARIETY OF FIELDS

MELBOURNE

La Trobe University

SEMESTER CREDITS 3-4 **LANGUAGE** ENGLISH

PLACEMENTS MEDIA STUDIES • SPORTS JOURNALISM

SYDNEY

Macquarie University

SEMESTER CREDITS 3-4 **LANGUAGE** ENGLISH

PLACEMENTS BUSINESS • HUMAN RESOURCES • MARKETING

NEW ZEALAND

AUCKLAND

AUT University

SEMESTER CREDITS 6-8 **LANGUAGE** ENGLISH

PLACEMENTS WIDE VARIETY OF FIELDS

STUDY ABROAD AND INTERNSHIPS

AUSTRALIA

SYDNEY

CHILE

SANTIAGO

IRELAND

DUBLIN

SPAIN

BARCELONA

PROGRAM DESCRIPTION

TOTAL CREDIT HOURS 12 **TOTAL CREDITS**

This program will begin with two, 5-week intensive academic courses taught by faculty onsite. Following the intensive courses, the students will participate in a 7-week full time internship placement.

Students complete each component consecutively, which will allow students dedicated time to focus on the academic courses and internship separately, providing a better balance between study and professional development. Some three-day weekends have been built into the program, leaving plenty of time for exploring the rich local culture of the host site.

Students will earn letter grades for the coursework, for a total of 12 credit hours (2 academic courses for 3 credits each, and 6 credits for their internship coursework).

INTERNATIONAL INTERNSHIPS



API international internships provide unique opportunities for participants to explore and cultivate their future career path through a high-quality, customized, and credit-bearing placement in several exciting fields and destinations. API internship programs encompass a number of career development and cultural resources to help participants maximize their personal and professional development.

CAREER CULTIVATION

- Participants will be immersed in the culture by living and working alongside locals.
- The API Workplace and Culture Orientation gives participants the opportunity to learn about the host country's history, people, and workplace differences which will prepare them for the enriching international professional experience ahead.

CAREER EXPLORATION

- An API internship will set participants on the path towards personal and professional excellence.
- Each participant benefits by having a variety of experiences to help discover and shape their passions.
- Pre-departure orientation materials and resources including the exclusive API Career Navigation Briefcase.

SELF-DISCOVERY

- Discover your unique passions, interests, and natural abilities while experiencing an API internship.
- Step outside of your comfort zone and into new surroundings to discover new abilities and for self-reflection.

INTERNSHIP LOCATIONS

ARGENTINA

BUENOS AIRES

AUSTRALIA

BRISBANE
GOLD COAST
MELBOURNE
SYDNEY

CHILE

SANTIAGO

ENGLAND

BRISTOL
LONDON

IRELAND

DUBLIN

NEW ZEALAND

AUCKLAND
WELLINGTON

SCOTLAND

EDINBURGH

PORTUGAL

LISBON

SPAIN

BARCELONA
MADRID
SEVILLE

INTERNSHIP PLACEMENTS

- Accounting and Finance
- Advertising, Communication and Journalism
- Architecture, Landscape and Planning
- Arts and Design
- Business, Entrepreneurship and Management
- Education
- Environmental
- Hospitality, Recreation and Tourism
- Law
- NGOs
- Psychology and Social Science
- Science, Technology, Engineering and Math
- Sports
- Veterinary Science and Zoology

VISIT APIABROAD.COM FOR MORE INFORMATION ABOUT API INTERNSHIPS.

API'S COMMITMENT TO **DIVERSITY AND INCLUSION**

API IS COMMITTED TO PROVIDING ENRICHING INTERNATIONAL EXPERIENCES TO ITS PARTICIPANTS.

We believe in the importance of promoting acceptance, dignity, and respect among people of all backgrounds.

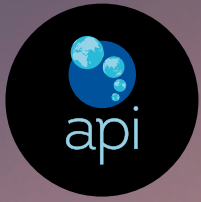
API demonstrates its commitment to inclusiveness by providing affordable and accessible programs, offering individualized support, and conducting ongoing diversity education and training for all API staff.

No matter who you are or where you come from, API will support you during your journey abroad.

API does not discriminate against any individual based on ethnicity, nationality, ancestry, race, sex, gender identity, creed, age, marital status, sexual orientation, or disability in its admissions decisions, program activities or employment practices.

“Travel is fatal to prejudice, bigotry and narrow-mindedness, and many of our people need it sorely on these accounts. Broad, wholesome, charitable views of humans and things can not be acquired by vegetating in one little corner of the earth all one's lifetime.” - Mark Twain





ONE'S DESTINATION IS NEVER
A PLACE, BUT A NEW WAY OF
SEEING THINGS. - HENRY MILLER



APIABROAD.COM • #ISPYAPI • #APIABROAD • (800) 844-4124



301 CAMP CRAFT RD. • SUITE 100 • AUSTIN, TEXAS 78746-6501 • 512/600-8900 • 512/600-8999 FAX • API@APIABROAD.COM

LEARNING TRANSFORMED. LIFE TRANSFORMING.