



INTERN ABROAD 6-WEEKS UP TO 24-WEEKS

2020

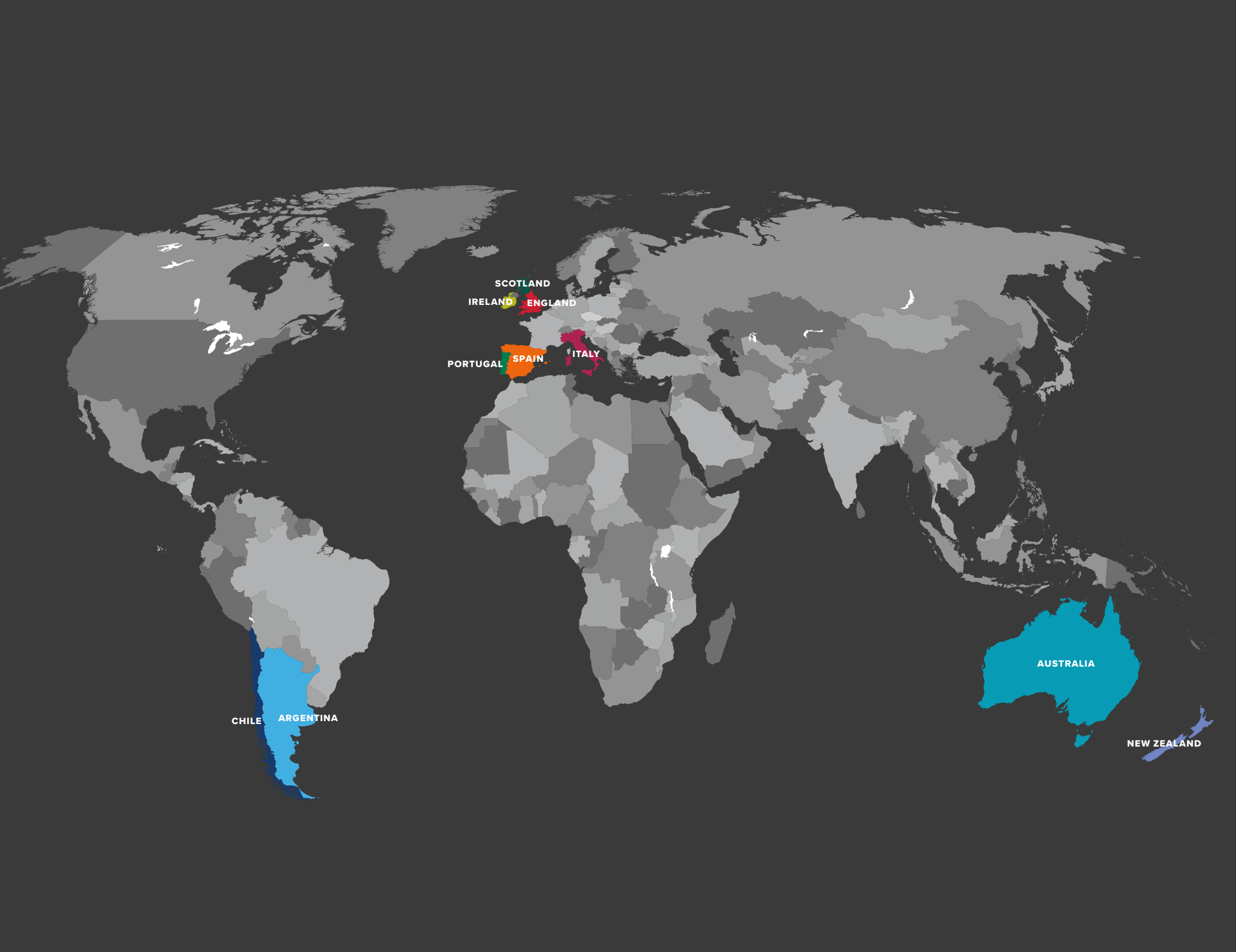


ARGENTINA • AUSTRALIA • CHILE • ENGLAND • IRELAND • ITALY • NEW ZEALAND • PORTUGAL • SCOTLAND • SPAIN



APIABROAD.COM

LEARNING TRANSFORMED. LIFE TRANSFORMING.



SCOTLAND
IRELAND ENGLAND

PORTUGAL SPAIN ITALY

CHILE ARGENTINA

AUSTRALIA

NEW ZEALAND



WELCOME TO THE BIG AND BEAUTIFUL WORLD OF API!

DISCOVER API	PAGE
MEET THE FOUNDING MAMAS	4
API MISSION AND CORE VALUES	5
INTERNSHIP OPTIONS	6
EARNING INTERNSHIP ACADEMIC CREDIT	7
STUDY ABROAD AND INTERNSHIP PROGRAM	8
WHAT'S INCLUDED?	9
HOW TO APPLY	12
PAYING FOR YOUR PROGRAM/SCHOLARSHIPS	13
STUDY ABROAD PLUS INTERNSHIPS	31
CUSTOMIZED GROUP INTERNSHIPS	32

INTERNSHIP PLACEMENTS

PLACEMENT OPPORTUNITIES	16
SAMPLE PLACEMENTS	17

INTERNSHIP LOCATIONS

ARGENTINA	
BUENOS AIRES	21
AUSTRALIA	
BRISBANE • GOLD COAST • MELBOURNE • SYDNEY	22
CHILE	
SANTIAGO	23
ENGLAND	
BRISTOL • LONDON	24
IRELAND	
DUBLIN	25
ITALY	
FLORENCE • MILAN • ROME • SYRACUSE	26
NEW ZEALAND	
AUCKLAND • WELLINGTON	27
PORTUGAL	
LISBON	28
SCOTLAND	
EDINBURGH	29
SPAIN	
BARCELONA • MADRID • SEVILLE	30

**API GIVES YOU THE MOST
INCLUSIVE AND HIGHEST
QUALITY INTERNATIONAL
INTERNSHIP EXPERIENCE
FOR THE PRICE.**



API INTERNATIONAL INTERNSHIPS PROVIDE UNIQUE OPPORTUNITIES

for participants to explore and cultivate their future career path through a high-quality, customized, credit-bearing placement in several exciting fields and destinations. API internship programs encompass a number of career development and cultural resources to help participants maximize their personal and professional development.

CAREER CULTIVATION

Participants will be immersed in the culture by living and working alongside locals.

The Workplace and Culture Orientation gives participants the opportunity to learn about the host country's history, people, and workplace, which will prepare them for the enriching international professional experience ahead.

CAREER EXPLORATION

An API international internship will set participants on the path towards personal and professional excellence.

Each participant benefits by having a variety of experiences to help discover and shape their interests and passions.

API provides pre-departure orientation materials and resources, including the exclusive API Career Navigation Briefcase.

SELF-DISCOVERY

Participants have the chance to discover and explore their unique passions and interests, while building character and further developing their own natural abilities.

API internships afford the opportunity to step outside of one's comfort zone into new surroundings, allowing participants to discover new opportunities for growth and self-reflection.



MEET **THE FOUNDING MAMAS** OF API



API FOUNDERS - BRITTANY NORMAN, JULIE LEITMAN, SHARON FOERSTER, JENNIFER ALLEN

“At API, we are committed to breaking down the barriers between people of different cultures as a force for good in the world.”

- Jennifer Allen / API Founding Mama

When the four Founding Mamas established API together more than 20 years ago, they dreamed of creating high-quality, safe, life-changing international programs they would feel good sending their own kids on. With dedication, hard work, and a lot of love, their dream became reality. Thousands and thousands of participants have chosen API to support them on their own life-changing global experiences, with the Four Mamas cheering them on every step of the way.

It is a source of pride to API that the majority of on-site staff who helped launch API’s first programs abroad remain with us today. We continue to hire personnel stateside and abroad who are deeply committed to the personal growth and safety of API participants and who demonstrate integrity in all that they do. API hires people that the Founding Mamas know will care for our participants on-site as if they were their own children. All of API’s four original founders have sent their own children on an API program to learn about and enjoy the world!

THE API **MISSION**

THE MISSION OF API IS TO DESIGN AND DELIVER INTERNATIONAL EXPERIENCES THAT INSPIRE LEARNING AND ENRICH STUDENTS, PARTNERS AND COMMUNITIES.



API **CORE VALUES**

PURSUE YOUR PASSION

We believe doing what you love can change the world.

INNOVATIVE SPIRIT

We bring creativity, a collaborative spirit and the resources to develop transformative and accessible experiences for students.

INDIVIDUALITY AND DIVERSITY

We foster respect, empathy and perspective.

LEARNING AND PERSONAL GROWTH

We promote personal growth and learning from the world at large.

SUPERIOR SERVICE, SAFETY AND QUALITY

We deliver exceptional experiences with student well-being as our highest priority.

HIGHEST ETHICS AND INTEGRITY

We are committed to honest, ethical practices and adherence to social and governmental norms wherever we operate.

API does not discriminate against any individual based on ethnicity, nationality, ancestry, race, sex, gender identity, creed, age, marital status, sexual orientation, or disability in its admissions decisions, program activities or employment practices.

THE API INTERNSHIP PROGRAM OFFERS THREE PROGRAM OPTIONS

8-WEEK FIXED DATE INTERNSHIP PROGRAM

- Two summer sessions
- Optional academic credit available through Nichols College (additional cost)
- Multi-day Workplace and Culture Orientation

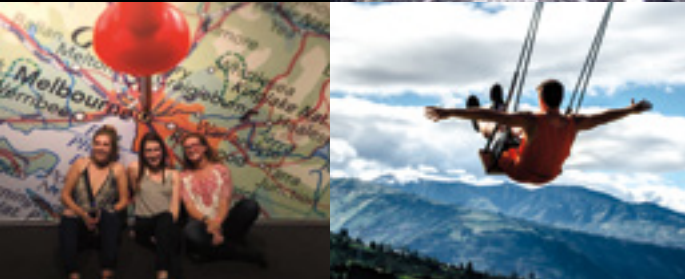
FLEX DATE INTERNSHIP PROGRAM

- Offered year-round
- Independent
- Rolling admissions
- Flexible start dates and program lengths
- Express half-day on-site orientation

STUDY ABROAD AND INTERNSHIP PROGRAM

- Combine studying abroad (5-weeks) with an internship (7-weeks) during one semester
- Earn a total of 12 credit hours
- Multi-day Workplace and Culture Orientation

“The API experience changed my life for the better, not only in terms of new perspectives and respect for the world, but also the ability to overcome challenges while learning about myself. I am so grateful to my program leaders and for the help I received prior to my departure, and I encourage other participants interested in going abroad to do so with this wonderful company.” - Joseph C.



EARNING INTERNSHIP ACADEMIC CREDIT

There are two ways for students to earn credit for their API internship experience:

API SCHOOL OF RECORD

API has partnered with Nichols College to offer academic credit for some API Internship Programs. Nichols College is a private institution located in Dudley, Massachusetts.

8-WEEK FIXED DATE INTERNSHIP PROGRAM

Students participating in the API 8-Week Fixed Date Program can enroll for optional academic credit for an additional fee of \$600. Participating in the an internship for credit has a number of benefits. Students will receive an official Nichols College transcript at the conclusion of the program.

API STUDY ABROAD AND INTERNSHIP PROGRAM

Students participating in the Study and Internship Program will automatically be enrolled for academic credit through Nichols College. This program will begin with two, five-week intensive academic courses taught by faculty onsite. Following the intensive courses, the students will participate in a 7-week full-time internship placement. Students will earn letter grades for the coursework, for a total of 12 credit hours (2 academic courses for 3 credits each, and 6 credits for their internship coursework). Students will receive an official Nichols College transcript at the conclusion of the program.

THROUGH YOUR HOME INSTITUTION

In many cases, students can earn credit for the *8-Week Fixed Date* or *Flex Date* Internship Programs though their home institution. This will typically be arranged through your academic department. All tuition fees are paid directly to your home institution and are in addition to the API program fees. It is important to arrange any academic credit before participation in the program as academic credit cannot retroactively be given.



STUDY ABROAD AND INTERNSHIP PROGRAM

API is excited to announce an innovative new semester Study and Internship Program starting in Spring 2020. This program will begin with two, five-week intensive academic courses taught by faculty on-site. The program will conclude with a 7-week full time internship placement.

With this unique program model, students complete each component consecutively, which will allow students dedicated time to focus on the academic courses and internship separately, providing a better balance between study and professional development. We have built in some three-day weekends, leaving plenty of time for exploring the rich local culture of the host site.

All students will be enrolled in academic credit through the API School of Record, Nichols College. Students will earn a total of 12 credit hours as letter grade (2 academic courses for 3 credits each, and 6 credits for their internship coursework). Students will receive an official Nichols College transcript at the conclusion of the program.

LOCATIONS

AUSTRALIA
SYDNEY

IRELAND
DUBLIN

CHILE
SANTIAGO

SPAIN
BARCELONA

DATES AND FEES

SPRING 2020

JANUARY 15 - APRIL 11, 2020

FALL 2020

AUGUST 26 - NOVEMBER 21, 2020

APPLICATION DEADLINES

SPRING 2020: SEPTEMBER 15, 2019

FALL 2020: MAY 1, 2020

PROGRAM FEES

BARCELONA \$11,900

DUBLIN \$12,995

SANTIAGO \$11,900

SYDNEY \$12,900

ELIGIBILITY

Minimum 2.50 G.P.A (3.0 for STEM placements)

ACADEMIC COURSES

Courses will typically be held Monday - Thursday for two hours a day each during the first five weeks. The two courses taught on-site by faculty will be:

HUM 244 CRITICAL THINKING - 3 CREDITS This course exposes biases, perspectives, and motivations that can be hindrances to organizational problem solving and decision making. Students are asked to examine in detail how they think to better evaluate, analyze, and resolve issues encountered in an organizational context.

HIS 270 IMMIGRATION, BENEFIT OR THREAT? - 3 CREDITS Immigration has been a significant feature of many societies around the world. Debates about it in the 21st century are not new. Migrants from Europe, Asia, Latin America, and Africa have invigorated their new destinations in a variety of ways - politically, economically, socially, and culturally. However, an ambivalent attitude toward immigration has persisted as migrants are often depicted as benefits or threats. This course will examine why this dynamic has continued, and will focus primarily on examples of voluntary migration (including refugees) and immigration legislation.

INTERNSHIP

Students will receive a high-quality, tailor-made internship based on their individual learning and career objectives. The internship experience give participants the unique opportunity to explore and cultivate their future career path during the 7-week experience. Placements can be made in almost every field of study. Language requirements may apply for certain placements in non-English speaking destinations. Participants will intern 5 days/35-40 hours a week for approximately 280 contact hours.

INTD 470 GLOBAL INTERNSHIP - 6 CREDITS This course explores the role of culture and international work experience in shaping students personally and professionally for their future careers. Through assignments and reflection exercises, students will learn about global communication, competence, cultural understanding, and the soft skills they have gained through the challenges and opportunities of living and working abroad. The internship course encourages students to integrate their academic coursework with their work experience, career development goals and personal skills and values.

Students will be enrolled in an internship course at Nichols College, which will be taught remotely using an online learning management system. Students must submit a series of reflective assignments in conjunction with their internship experience.

VISIT **APIABROAD.COM** FOR MORE INFORMATION AND TO APPLY TODAY!

THERE IS SO MUCH INCLUDED WITH API PROGRAMS!



Pre-departure advising
INCLUDING RESUME AND COVER LETTER TIPS



API Learning
and Engagement
Badge Program



Medical and life insurance



Tailored internship
placements in a wide
variety of fields



@api Online system



Internship placement
oversight



Orientation materials
and resources



Quality housing



Career Navigation Briefcase
INCLUDES THE LINKEDIN 101 GUIDE, CAREER
PLANNING AND INTERNING ABROAD
ASSIGNMENTS, AND SOFT SKILLS TRAINING



Workplace and
Culture Orientation



Access to on-site
Resident Directors 24/7



Local cultural activities



Academic credit
OPTIONAL AND FOR AN ADDITIONAL FEE



API alumni network



IT'S ALL IN **THE DETAILS**

PRE-DEPARTURE SERVICES

ADVISING

API staff members happily guide participants through the administrative processes of the pre-departure phase of interning abroad. Participants (and their families) may contact API as often as needed with questions about placements, academic credit, on-site logistics, visa procedures, housing, and anything else. API staff members, in turn, are frequently in touch with participants regarding program updates, essential travel tips, and recommendations for having a successful experience abroad.

TAILORED INTERNSHIP PLACEMENT

API works with each individual to find the best possible internship match to meet that individual's learning objectives and future career interests. Depending on the destination, the applicant's level of education, foreign language ability, and the competitiveness of the requested placement focus, the applicant may need to have some flexibility with the placements available.

ORIENTATION MATERIALS AND RESOURCES

All API participants receive orientation information to help them prepare for their international internship placement. API participants have access to a unique online service, the API Toolbox, which includes orientation materials highlighting logistical details, cultural differences, what participants can expect at their internship placement, health and safety concerns, travel tips, and more.

ALUMNI NETWORK

API can connect prospective program participants with recently returned API alumni. These alumni can share their experience, answer questions, and connect with students pre-departure. Upon their return, API alumni have the opportunity to participate in a number of alumni programming opportunities, including the API Global Leadership Academy.

ON-SITE SERVICES

ON-SITE ORIENTATION

We understand that going overseas for an international internship can be an exciting but overwhelming undertaking. To ensure that our interns are prepared for this intensive academic and career experience, we have developed a special internship orientation program to ease the transition. All interns participating in the 8-Week Fixed Date Internship Program will receive our unique 3-day Workplace and Culture Orientation. During this fun and educational orientation, interns will have the opportunity to build relationships with other participants, discover the local culture, learn about the host country work environment, attend career-related workshops, and participate in local cultural activities.

QUALITY HOUSING

Housing is included in the API program fee and varies by destination. Housing typically consists of student apartments and homestays, and may be co-ed (by household, not bedroom). Participants should expect the accommodation to be centrally located and easily accessible to public transportation. Each participant's commute will vary, as internship placements are located in different areas in each site, though commute times will generally be between 30-60 minutes. Participants will receive their confirmed housing assignment approximately three weeks prior to departure. A \$275 housing security deposit is due by the final payment deadline for all programs. A fee of \$95 will be retained from all housing security deposits to cover standard cleaning fees and general maintenance fees, including minor repairs and standard touch-up painting. The remaining \$180 is refundable provided that: 1) no additional fees are assessed for on-site incidentals, damages, or excessive utility usage; and 2) the API program fee has been paid in full. Refer to the city information sections on the API website for more specific housing information by location.

RESIDENT DIRECTORS/COORDINATORS

API has highly qualified, trained, and experienced English-speaking Resident Directors/Coordinators available to participants throughout their session abroad. Most Resident Directors/Coordinators are locals from the host country in which participants will be interning and are ready to provide practical information and insight into the host culture. They introduce participants to the ways of life in their host country, help them get settled into their placements, and support participants throughout their stay. They are available in case of any personal emergency and are ready to implement the API emergency response plans if needed.

MEDICAL AND LIFE INSURANCE

Medical and life insurance is provided for all participants during the program term. The coverage includes medical evacuation and repatriation, as well as 24-hour support for medical issues.

CAREER NAVIGATION BRIEFCASE

An international internship is not just about the destination. It will be a journey of adventures, experiences, learning, successes, and challenges, which serve to help one grow as a person and a professional. To help participants through this remarkable career exploration and cultivation experience, API has created our exclusive Career Navigation Briefcase. The Career Navigation Briefcase will include the following resources to help participants start developing their career both at home and abroad:

LINKEDIN 101 GUIDEBOOK • CAREER PLANNING & INTERNING ABROAD ASSIGNMENTS • SOFT SKILLS TRAINING & IDENTIFICATION • SOKANU CAREER DISCOVERY & ENGAGEMENT PLATFORM • ADDITIONAL CAREER ASSESSMENT RESOURCES

SOCIAL AND CULTURAL ACTIVITIES

Students are offered monthly API-sponsored social and cultural activities, including outings to movies, concerts, cultural tours, theater performances, museums, outdoor activities, cooking classes and more. All entrance fees are covered by API. Students also enjoy both welcome and farewell group meals.

API LEARNING AND ENGAGEMENT DIGITAL BADGE PROGRAM

API offers participants the opportunity to maximize their time abroad by earning digital badges that reflect activities completed before, during and after their international experience. Digital badges can be earned in the areas of Career Development, Community Engagement, Intercultural Learning, Leadership and Mindful Travel. Digital badges can be displayed on résumés, e-portfolios, personal branding and online web presence. Badges are an opportunity for participants to show their potential employers and their community how they made the most of their experience abroad.

RE-ENTRY SERVICES

ACADEMIC CREDIT AND TRANSCRIPT

API's Fixed Date internships offer participants the option to earn academic credit (for an additional fee). Participants may also wish to petition their home university for academic credit for work completed on a Flex Date internship.

Upon completion of a Fixed Date internship, an official transcript from an accredited U.S. university is sent to the student's home institution if they've requested a transcript and paid the additional fee. Prior to beginning their internship program, API encourages participants to discuss academic credit options with home school advisors to determine if and how credits may be earned. Academic credit for internships must be approved and arranged before the internship begins as credit typically cannot be retroactively arranged.

ALUMNI NETWORK AND PROFESSIONAL DEVELOPMENT OPPORTUNITIES

Returning participants have the opportunity to continue to be engaged with API through a variety of alumni opportunities. API continues to support participants post-experience through the API alumni network, job postings and items of interest in the API Alumni Facebook and LinkedIn groups, or by participating in API's Global Leadership Academy.

API'S GLOBAL LEADERSHIP ACADEMY

The Global Leadership Academy offers participants the opportunity to build core competencies of global leadership in a dynamic and creative atmosphere. The program helps participants develop skills to share their experience in their community, on campus, and in job interviews. Students host collaborative events to share their international story and learn to integrate their international experience into their chosen career path.



Scan the QR code with your smart phone's camera and go directly to the API intern homepage and **start your application today!**



NOW IS THE TIME TO APPLY!

HERE'S HOW TO APPLY APPLICATION PROCESS

- Apply online at apiabroad.com
- Pay \$150 initial deposit
APPLIED TOWARDS PROGRAM FEE. THIS FEE IS REFUNDED IF WE ARE UNABLE TO PLACE YOU.
- Submit supplemental application materials **DUE BY APPLICATION DEADLINE**
 - Cover letter (explaining the internship you are seeking)
 - Two letters of reference from a professional or academic source
 - Official transcript/s
 - Résumé/CV
 - University Approval form (if applicable)
 - Academic Credit Option form

ADVISING SESSION AND INTERNSHIP PLACEMENT

- Schedule advising session with API staff to discuss learning and career objectives
- Pay confirmation payment of \$400 within 48 hours of offer
APPLIED TOWARDS PROGRAM FEE. THIS FEE IS REFUNDED IF WE ARE UNABLE TO PLACE YOU.
- Submit Intent to Enroll (ITE) Form
- Overseas office begins customized placement process
- Confirmation of placement typically in 4-8 weeks

FINAL STEPS BEFORE DEPARTURE

- Accept your internship placement and submit \$1,000 payment within 48 hours of offer
- Pay program fee balance 30 days prior to departure
- Read pre-departure materials via the **@api** online system
- Apply for immigration visa (where applicable)
- Receive housing assignment
- Depart!

FINANCIAL AID AND SCHOLARSHIPS

API is happy to accept institutional and federal financial aid that is processed by the participant's home university. Participants who plan on using financial aid toward the cost of the intern abroad session should meet with their school's financial aid office EARLY! All participants, even those who are not currently receiving financial aid, are encouraged to meet with financial aid representatives at their home university to determine eligibility for scholarships, grants, or loans that may be available for their abroad program. Some participants are even eligible to increase the amount of their financial aid award based on the comparative cost of living abroad. API signs consortium agreements as necessary to ensure that financial aid can be applied to the API program cost.

API INTERNSHIP SCHOLARSHIP

Participants may apply for scholarships of up to \$500 per term on the Fixed Date internships.

BENJAMIN A. GILMAN AWARD MATCHING

The Gilman Scholarship Program provides awards for U.S. undergraduate students who are receiving Federal Pell Grant funding at a two-year or four-year college or university to participate in study and intern abroad programs worldwide. Students participating in an API program who have been awarded a Gilman scholarship will be eligible to receive up to \$500 in matching contributions from API for an intern abroad program.

API ALSO HAS A LIST OF SCHOLARSHIPS, LOAN DIRECTORIES, AND CROWD FUNDING RESOURCES ON OUR WEBSITE.

FOR MORE INFO ABOUT SCHOLARSHIPS, VISIT APIABROAD.COM OR CALL (800) 844-4124.

CONNECT ONLINE



FACEBOOK facebook.com/APIabroad

TWITTER twitter.com/APIabroad

INSTAGRAM instagram.com/apiabroad

YOUTUBE youtube.com/c/APIabroad

SNAPCHAT snAPIabroad

PINTEREST pinterest.com/APIabroad

THE API BLOG blog.apiabroad.com

EXPLORE **#ISPYAPI** AND **#APIABROAD**
THROUGHOUT API'S SOCIAL MEDIA CHANNELS





YOU CAN DO IT!

STRENGTHEN YOUR RÉSUMÉ AND DEVELOP YOUR CAREER

Interning and living abroad give you life skills that will help you further down the line when looking for a job.

EARN CREDIT

API's Fixed Date internships offer participants the option to earn academic credit (for an additional fee).

MAKE IT AFFORDABLE

API awards over \$500,000 annually in scholarships and there are specific scholarships available for internship participants.

ENHANCE YOUR LIFE

Living in another country will give you a new perspective on life and the world. You'll become a citizen of the world and help to make it a better place for all.

MAKE FRIENDS FROM ALL OVER THE WORLD

Your life abroad will be filled with people from all over the United States as well as the world. Who knows who will become your friends for life!

INTERNSHIP **PLACEMENTS**



PLACEMENT OPPORTUNITIES

ACCOUNTING AND FINANCE

Actuarial Science • Asset Management • Accounting • Banking
Economics • Financial Analysis • Investment Banking • Taxes

ADVERTISING, COMMUNICATIONS AND JOURNALISM

Advertising • Broadcasting • Copy Writing • Event Management
Film • Journalism • Marketing • Public Relations • Social Media

ARCHITECTURE, LANDSCAPE AND PLANNING

Architecture • Construction • Interior Design • Landscape Design

ARTS AND DESIGN

Curating • Graphic Design • Fashion • Painting
Photography • Performing Arts

BUSINESS, ENTREPRENEURSHIP AND MANAGEMENT

Business Administration • Business Development • Business Operations
Customer Service • Financial Analysis • International Trade • Logistics
Marketing • Sales • Start-Ups

EDUCATION

Preschool Education • Elementary Education • Secondary Education
Education Administration • Physical Education • Special Education

ENVIRONMENT

Climate Change • Conservation • Ecology • Forestry
Entomology • Environmental Planning • Environmental Policy
Natural Resources • Sustainability

HOSPITALITY, RECREATION AND TOURISM

Culinary Arts • Event Planning • Hotel Management • Resorts
Restaurant Management • Sales • Tourism Marketing

LAW

Human Rights • Legal Administration • Legal Advocacy • Legal Research

NON-GOVERNMENTAL ORGANIZATIONS (NGOs)

Advocacy • Charities • Conservation • Environmental • Family Planning
Health • Human Rights • International Development • Social Welfare

PSYCHOLOGY AND SOCIAL SCIENCE

Addiction • Autism • Mental Health • Research
Social Welfare • Social Services • Youth Work

SCIENCE, TECHNOLOGY, ENGINEERING AND MATH

Biology • Chemical Engineering • Chemistry • Civil Engineering
Computer Science • Information Technology • Structural Engineering
Research • Website Development

SPORTS

Coaching • Exercise Science • Sports Events • Sports Journalism
Sports Management • Sports Marketing

VETERINARY SCIENCE AND ZOOLOGY

Animal Welfare • Marine Biology • Research
Vet Clinic • Wildlife Parks • Zoo Keeping

SAMPLE PLACEMENTS

“While interning at FirstVIsion, I developed marketing campaigns, which included planning, advertising, public relations, event organization, product development, distribution, sponsorship, and research.”

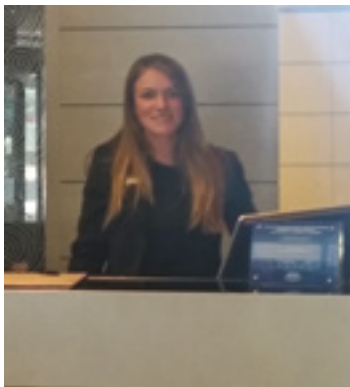


FirstVIsion is a system that aims to revolutionize the world of sports broadcasting, using cameras that are integrated into the athlete’s clothing.

“I gained experience by working in customer service, front desk operations, reservation management, group bookings, supplier management, marketing, and public relations.”



The exceptional urban Barcelona hotel, the AC Hotel Sants, is located near the Sants Train Station, the Fira de Barcelona Exhibition Centre, and the Plaza de España. Its prime location provides easy access to MACBA, the Sagrada Familia Temple, the airport, and the city centre.



Projects that participants have worked on at the Fashion and Textile Museum in London:

- Gallery guide for an exhibition discussing product development and garment design
- Fashion buying, merchandising, and trend forecasting practices for the Museum Shop
- Supporting all operations of museum events including workshops and shows
- Social media marketing



The Fashion and Textile Museum is a cutting edge center for contemporary fashion, textiles, and jewelry in London. Founded by iconic British designer Sandra Rhodes, the center showcases a program of changing exhibitions exploring elements of fashion, textile, and jewelry.


“While interning at the LATN Network, I developed proposals in order to bring sustainability to the Inclusive Green Growth Initiative as well as to build strategies with partners in order to influence government policy.”



LATN Network is an independent policy-oriented research network, hosted by the Latin American School of Social Sciences (FLACSO), Argentina. LATN identifies and develops ideas aimed at bringing about change in Latin America through research on public policy and interaction with academics, public sector, and civil society representatives.

SAMPLE PLACEMENTS

“As an intern, I assisted the supervising teacher with classroom facilitation, lesson planning, and activities.”

 IntoUniversity provides practical learning, support, motivation and confidence-building activities for children and young people aged 7-14, primary school, and lower secondary school in the UK. It is a supplementary school project giving every child the opportunity to achieve at university.

“While interning at Breinkemin I learned about international trade activities and how they vary in different countries. I also developed custom broker tasks, which included administrative requirements and methodology.”



Breinkemin Argentina is an international trade company present in three countries, focused on the following areas: Customs Brokering and National and International Trade Logistics.

“While interning at Fedelatina, I promoted the program, recruited and selected participants, provided training, and facilitated program sessions.”



Fedelatina is an NGO that helps the immigrant Latino community in Barcelona, which faces integration problems as well as a high level of unemployment. As interns, API participants develop, work and support a project that focuses on youth employment.

“As an intern, I assisted with meetings for small to mid-sized enterprises to showcase trade advisory capabilities, products, channel partners, and client offerings.”



World Trade Centres have thousands of employees worldwide, and influence international business on a daily basis. With a new Dublin Operations Centre, the WTCDC is developing an online international trade offering to showcase products and services around the world.

“While interning at Corporación Cultiva, I helped analyze climate change agreements and I supported the development of content focused on the impact of national environmental public policy.”



Corporación Cultiva is a non-profit organization located in Santiago that is aimed at building and implementing a participatory transformation of public spaces to create training experiences. Cultiva also channels the ideals of young people in activities that contribute to their development solutions. The organization generates synergy between public, private, and civil society organizations, enhancing the results, impact, and sustainability of initiatives for the effective transformation of society. Core focus: environmental interventions, reforestation, transformative learning, and social integration.

SAMPLE PLACEMENTS

“As an intern, I assisted with the compilation and analysis of commercial data related to competitors, collaborators, and acquisition targets. This data helped to inform their strategic growth plans, principally in overseas markets.”

BYRNELOOBY ByrneLooby is an international consulting engineering practice that delivers engineering solutions for challenging projects across Ireland, the U.K., and the Middle East. ByrneLooby are specialist-engineering consultants with particular expertise in geotechnical, civil, structural, marine, and water engineering services.

“While interning at Ludique, I assisted with projects to support the development of new business lines, business planning, and supply chain management.”



Located in Santiago, Chile, Ludique Communications is positioned as a leader in the field of interactive digital production. Ludique brings new media closer to companies and institutions and creates value in communication with people.

“As an intern, I assisted with the translation of documents from Spanish to English, wrote conference reports, and revised program literature.”



CELS, a Human Right's NGO, is focused on advocacy, promotion and the protection of human rights in Argentina. Created in 1979, during the last dictatorship in Argentina, CELS was one of the first human rights NGOs in Latin America. The

organization's aim is to promote the transition to a democratic regime, and to investigate cases of the forced-disappearance of persons.



“On a typical day, I come to work and focus on the internship-long project I was given responsibility for. The project is to design and build a 5-axis mechanical arm that programmers will use for research and testing for future projects. Once I finish designing the project with 3D CAD software, I will begin to manufacture it using both a 3-D printer and CNC machine.”



IDMIND focuses a lot of its effort in the research and development of applying robotics to education, entertainment, remote inspection and other services.

We partner with businesses and universities from around the EU to find solutions on how to improve our lives through the integration of robots.



INTERNSHIP LOCATIONS



ARGENTINA

BUENOS AIRES

POPULATION 2,900,000

UNIQUE • COSMOPOLITAN • ENERGY • ARTISTIC

- Buenos Aires is the social, cultural and economic heart of Argentina
- Architectural beauty often called the "Paris of Latin America"
- Numerous museums, world renowned theaters and tango dance
- Cosmopolitan city with an exciting nightlife and passion for life



VISIT **APIABROAD.COM**

TO APPLY AND LEARN MORE ABOUT YOUR INTERNATIONAL INTERNSHIP!



LANGUAGE OF INTERNSHIP

English and Spanish

HOUSING

Apartments and Host Families

ACADEMIC CREDIT

FIXED DATE PROGRAMS

6 academic credits for \$600

FLEX DATE PROGRAMS

Credit must be arranged through home institution

DATES AND FEES

FIXED DATES

\$6,275 ADD \$600 TO EARN ACADEMIC CREDIT

PROGRAM DATES

8-WEEK PROGRAM
SUMMER 1 Late May - Late July / SUMMER 2 Mid-June - Mid-August

APPLICATION DEADLINES

SUMMER 1 MAY START February 1 / SUMMER 2 JUNE START March 1

APPLY EARLY! To allow for optimal time for the internship placement process, API encourages applicants to apply 1-2 months BEFORE the final application deadlines. All application materials must be into the API office by the deadline.

FLEX DATES

\$5,650 \$400 EACH ADDITIONAL WEEK

PROGRAM DATES

STARTING AT 6-WEEKS
Start dates offered twice a month • First and third Monday of each month • Participant chooses ending date

APPLICATION DEADLINES

Four months prior to intended start date

"The API Buenos Aires staff was absolutely wonderful. It was obvious that they cared deeply about everyone and did everything possible to make us feel welcome and comfortable. It felt more like becoming a part of a family than just participating in a program!"

- Eleanor O. / Southwestern University

Scan the QR code with your smart phone's camera and go directly to the API Argentina webpage and **start your application today!**





AUSTRALIA

BRISBANE

POPULATION 2,210,000

METROPOLITAN • ECLECTIC • VIBRANT • DIVERSE

- 3rd most populous city in Australia
- Named world's best downtown

GOLD COAST

POPULATION 625,000

ENERGETIC • LAID-BACK • NATURAL • OCEAN

- Some of the most beautiful beaches in the world
- Laid back, beach town vibe

MELBOURNE

POPULATION 2,210,000

MULTICULTURAL • ARTISTIC • TASTY • CREATIVE

- One of the world's top 3 most-livable cities
- Foodie and sporting capital of Australia

SYDNEY

POPULATION 2,210,000

METROPOLITAN • CULTURAL • EXCITING • OCEAN

- Country's economic and financial hub
- One of the world's most multicultural cities



VISIT [APIABROAD.COM](https://www.apiabroad.com)

TO APPLY AND LEARN MORE ABOUT
YOUR INTERNATIONAL INTERNSHIP!

LANGUAGE OF INTERNSHIP

English

HOUSING

Apartments, Hostel, and Rental Homes (AirBnB)

ACADEMIC CREDIT

FIXED DATE PROGRAMS

6 academic credits for \$600

FLEX DATE PROGRAMS

Credit must be arranged through home institution

DATES AND FEES

FIXED DATES

\$6,895 ADD \$600 TO EARN ACADEMIC CREDIT

PROGRAM DATES 8-WEEK PROGRAM

SUMMER 1 Late May - Late July / SUMMER 2 Mid-June - Mid-August

APPLICATION DEADLINES

SUMMER 1 MAY START February 1 / SUMMER 2 JUNE START March 1

APPLY EARLY! To allow for optimal time for the internship placement process, API encourages applicants to apply 1-2 months BEFORE the final application deadlines. All application materials must be into the API office by the deadline.

FLEX DATES

\$5,995 \$525 EACH ADDITIONAL WEEK

PROGRAM DATES STARTING AT 6-WEEKS

Start dates offered twice a month • First and third Monday of each month • Participant chooses ending date

APPLICATION DEADLINES Four months prior to intended start date

STUDY ABROAD AND INTERNSHIP IN SYDNEY

This program will begin with **two, 5-week intensive academic courses** taught by faculty onsite. Following the intensive courses, the students will participate in a **7-week full time internship placement**. Students complete each component consecutively, which will allow students dedicated time to focus on the academic courses and internship separately, providing a better balance between study and professional development. Some three-day weekends have been built into the program, leaving plenty of time for exploring the rich local culture of the host site. Students will earn letter grades for the coursework, for a total of **12 credit hours** (2 academic courses for 3 credits each, and 6 credits for their internship coursework).



CHILE

SANTIAGO

POPULATION 4,325,000

MODERN • PICTURESQUE • DYNAMIC • FRIENDLY

- Chile's capital city close to mountains with skiing, snowboarding, biking and hiking
- Bustling city with modern conveniences
- Beautiful views of the Andes mountains
- The business hub of Chile



VISIT APIABROAD.COM

TO APPLY AND LEARN MORE ABOUT YOUR INTERNATIONAL INTERNSHIP!



LANGUAGE OF INTERNSHIP

English and Spanish

HOUSING

Apartments and Host Families

ACADEMIC CREDIT

FIXED DATE PROGRAMS

6 academic credits for \$600

FLEX DATE PROGRAMS

Credit must be arranged through home institution

DATES AND FEES

FIXED DATES

\$6,100 ADD \$600 TO EARN ACADEMIC CREDIT

PROGRAM DATES

8-WEEK PROGRAM
SUMMER 1 Late May - Late July / SUMMER 2 Mid-June - Mid-August

APPLICATION DEADLINES

SUMMER 1 MAY START February 1 / SUMMER 2 JUNE START March 1

APPLY EARLY! To allow for optimal time for the internship placement process, API encourages applicants to apply 1-2 months BEFORE the final application deadlines. All application materials must be into the API office by the deadline.

FLEX DATES

\$5,590 \$425 EACH ADDITIONAL WEEK

PROGRAM DATES

STARTING AT 6-WEEKS
Start dates offered twice a month • First and third Monday of each month • Participant chooses ending date

APPLICATION DEADLINES

Four months prior to intended start date

STUDY ABROAD AND INTERNSHIP IN SANTIAGO

This program will begin with **two, 5-week intensive academic courses** taught by faculty onsite. Following the intensive courses, the students will participate in a **7-week full time internship placement**. Students complete each component consecutively, which will allow students dedicated time to focus on the academic courses and internship separately, providing a better balance between study and professional development. Some three-day weekends have been built into the program, leaving plenty of time for exploring the rich local culture of the host site. Students will earn letter grades for the coursework, for a total of **12 credit hours** (2 academic courses for 3 credits each, and 6 credits for their internship coursework).

"Our Resident Director was an absolute angel. She helped with everything we needed, no matter how big or small."

- Holly K. / Bryant University



ENGLAND

BRISTOL

POPULATION 500,000

MULTICULTURAL • ENERGETIC • HISTORIC • ACTIVE

- Technology and engineering hub of England
- Buzzing, multicultural university city
- Two-hour train ride to/from London

LONDON

POPULATION 8,675,000

BUSTLING • DIVERSE • CREATIVE • INSPIRING

- International center of art and design
- Global political and economic/business hub
- World-renowned theater scene
- One of Europe's most diverse and fascinating cities



VISIT **APIABROAD.COM**
TO APPLY AND LEARN MORE ABOUT
YOUR INTERNATIONAL INTERNSHIP!

LANGUAGE OF INTERNSHIP

English

HOUSING

Apartments

ACADEMIC CREDIT

FIXED DATE PROGRAMS

6 academic credits for \$600

FLEX DATE PROGRAMS

Credit must be arranged through home institution

DATES AND FEES

FIXED DATES

\$7,995 ADD \$600 TO EARN ACADEMIC CREDIT

PROGRAM DATES 8-WEEK PROGRAM

SUMMER 1 Late May - Late July / SUMMER 2 Mid-June - Mid-August

APPLICATION DEADLINES

SUMMER 1 **MAY START** February 1 / SUMMER 2 **JUNE START** March 1

APPLY EARLY! To allow for optimal time for the internship placement process, API encourages applicants to apply 1-2 months BEFORE the final application deadlines. All application materials must be into the API office by the deadline.

FLEX DATES

\$7,350 \$525 EACH ADDITIONAL WEEK

PROGRAM DATES STARTING AT 6-WEEKS

Start dates offered twice a month • First and third Monday of each month • Participant chooses ending date

APPLICATION DEADLINES Four months prior to intended start date

"I've learned so much about who I am and who I want to be in these few short months. I've learned to love the details of being alive."

- Sierra C. / Bard College

UK VISA SPONSORSHIP FEE INCLUDED IN THE PROGRAM FEE!

API prices include the \$800 mandatory BUNAC visa fees. Other providers charge you extra!

Scan the QR code with your smart phone's camera and go directly to the API England webpage and **start your application today!**





IRELAND

DUBLIN

POPULATION 1,345,000

FRIENDLY • LIVELY • COASTAL • HISTORIC

- A city that feels more like a large village
- Strong artistic, literary and musical traditions
- Hub for European travel
- Charming Irish hospitality



VISIT **APIABROAD.COM**
TO APPLY AND LEARN MORE ABOUT
YOUR INTERNATIONAL INTERNSHIP!



"API provided me with an enriching opportunity and gave me the confidence that I needed to get out of my comfort zone. This was truly an unforgettable experience!"

- Amanda O. / University of Hartford

LANGUAGE OF INTERNSHIP

English

HOUSING

Apartments and Homestays

ACADEMIC CREDIT

FIXED DATE PROGRAMS

6 academic credits for \$600

FLEX DATE PROGRAMS

Credit must be arranged through home institution

DATES AND FEES

FIXED DATES

\$7,050 ADD \$600 TO EARN ACADEMIC CREDIT

PROGRAM DATES

8-WEEK PROGRAM
SUMMER 1 Late May - Late July / SUMMER 2 Mid-June - Mid-August

APPLICATION DEADLINES

SUMMER 1 MAY START February 1 / SUMMER 2 JUNE START March 1

APPLY EARLY! To allow for optimal time for the internship placement process, API encourages applicants to apply 1-2 months BEFORE the final application deadlines. All application materials must be into the API office by the deadline.

FLEX DATES

\$6,475 \$450 EACH ADDITIONAL WEEK

PROGRAM DATES

STARTING AT 6-WEEKS
Start dates offered twice a month • First and third Monday of each month • Participant chooses ending date

APPLICATION DEADLINES Four months prior to intended start date

STUDY ABROAD AND INTERNSHIP IN DUBLIN

This program will begin with **two, 5-week intensive academic courses** taught by faculty onsite. Following the intensive courses, the students will participate in a **7-week full time internship placement**. Students complete each component consecutively, which will allow students dedicated time to focus on the academic courses and internship separately, providing a better balance between study and professional development. Some three-day weekends have been built into the program, leaving plenty of time for exploring the rich local culture of the host site. Students will earn letter grades for the coursework, for a total of **12 credit hours** (2 academic courses for 3 credits each, and 6 credits for their internship coursework).



ITALY

FLORENCE

POPULATION 381,000

HISTORIC • ENCHANTING • TRADITIONAL • ARTISTIC

- Breathtaking beauty
- An artistic and social environment

MILAN

POPULATION 1,400,000

STYLISH • COSMOPOLITAN • DIVERSE • ENERGETIC

- A fast-paced, creative metropolis
- Vibrant music scene and nightlife

ROME

POPULATION 2,210,000

HISTORIC • INSPIRING • COSMOPOLITAN • YUMMY

- Friendly, warm, inviting people
- Art historians' dream with history at every step

SYRACUSE

POPULATION 121,000

COASTAL • HISTORIC • IMMERSIVE • NATURAL

- A warm-welcoming and lively city on the south-eastern coast of Sicily
- Wonderful climate and beaches

LANGUAGE OF INTERNSHIP

English and Italian

HOUSING

Apartments and Homestays

ACADEMIC CREDIT *Italy programs require students to enroll for academic credit.*

FIXED DATE PROGRAMS

6 academic credits for \$600

FLEX DATE PROGRAMS

Credit must be arranged through home institution

DATES AND FEES

FIXED DATES

\$7,375 ADD \$600 TO EARN ACADEMIC CREDIT

PROGRAM DATES 8-WEEK PROGRAM

SUMMER 1 Late May - Late July / SUMMER 2 Mid-June - Mid-August

APPLICATION DEADLINES

SUMMER 1 **MAY START** February 1 / SUMMER 2 **JUNE START** March 1

APPLY EARLY! To allow for optimal time for the internship placement process, API encourages applicants to apply 1-2 months BEFORE the final application deadlines. All application materials must be into the API office by the deadline.

FLEX DATES

\$6,995 \$500 EACH ADDITIONAL WEEK

PROGRAM DATES STARTING AT 6-WEEKS

Start dates offered twice a month • First and third Monday of each month • Participant chooses ending date

APPLICATION DEADLINES Four months prior to intended start date

“The staff at API is the most helpful and kind group of people I have ever met. They all remind me of mothers, in the best way possible! My interactions with API were ALWAYS positive.” - Gareth M.

Scan the QR code with your smart phone's camera and go directly to the API Italy webpage and **start your application today!**



VISIT **APIABROAD.COM**
TO APPLY AND LEARN MORE ABOUT
YOUR INTERNATIONAL INTERNSHIP!



NEW ZEALAND

AUCKLAND

POPULATION 1,495,000

ARTSY • TASTY • ENERGETIC • COASTAL

- World's 3rd highest quality of living
- Largest city in New Zealand
- Known as the "City of Sails"
- Over 100 miles of pristine beaches

WELLINGTON

POPULATION 405,000

CREATIVE • COASTAL • RELAXING • DIVERSE

- New Zealand's capital city
- Often compared to Seattle or Portland
- Cultural heart of New Zealand
- Charm of a European city with a Kiwi way of life



VISIT **APIABROAD.COM**

TO APPLY AND LEARN MORE ABOUT
YOUR INTERNATIONAL INTERNSHIP!

LANGUAGE OF INTERNSHIP

English

HOUSING

Apartments, Hostel, and Rental Homes (AirBnB)

ACADEMIC CREDIT

FIXED DATE PROGRAMS

6 academic credits for \$600

FLEX DATE PROGRAMS

Credit must be arranged through home institution

DATES AND FEES

FIXED DATES

\$6,200 ADD \$600 TO EARN ACADEMIC CREDIT

PROGRAM DATES 8-WEEK PROGRAM

SUMMER 1 Late May - Late July / SUMMER 2 Mid-June - Mid-August

APPLICATION DEADLINES

SUMMER 1 **MAY START** February 1 / SUMMER 2 **JUNE START** March 1

APPLY EARLY! To allow for optimal time for the internship placement process, API encourages applicants to apply 1-2 months BEFORE the final application deadlines. All application materials must be into the API office by the deadline.

FLEX DATES

\$5,575 \$425 EACH ADDITIONAL WEEK

PROGRAM DATES STARTING AT 6-WEEKS

Start dates offered twice a month • First and third Monday of each month • Participant chooses ending date

APPLICATION DEADLINES Four months prior to intended start date

"API was one of the best programs I have ever been a part of. The staff is amazing, they organized things very well, and they always made sure there was something to be doing or giving suggestions or even being as kind to take lunch all together." - Natalia F. / Siena College

Scan the QR code with your smart phone's camera and go directly to the API New Zealand webpage and **start your application today!**





PORTUGAL

LISBON

POPULATION 2,700,000

VIBRANT • INEXPENSIVE • COASTAL • INSPIRING

- Old world tradition and charm
- One of the most affordable and undiscovered of Europe's great capitals
- Close to the beach



VISIT **APIABROAD.COM**

TO APPLY AND LEARN MORE ABOUT YOUR INTERNATIONAL INTERNSHIP!



LANGUAGE OF INTERNSHIP

English and Portuguese

HOUSING

Apartments

ACADEMIC CREDIT

FIXED DATE PROGRAMS

6 academic credits for \$600

FLEX DATE PROGRAMS

Credit must be arranged through home institution

DATES AND FEES

FIXED DATES

\$6,200 ADD \$600 TO EARN ACADEMIC CREDIT

PROGRAM DATES

8-WEEK PROGRAM
SUMMER 1 Late May - Late July / SUMMER 2 Mid-June - Mid-August

APPLICATION DEADLINES

SUMMER 1 MAY START February 1 / SUMMER 2 JUNE START March 1

APPLY EARLY! To allow for optimal time for the internship placement process, API encourages applicants to apply 1-2 months BEFORE the final application deadlines. All application materials must be into the API office by the deadline.

FLEX DATES

\$5,350 \$325 EACH ADDITIONAL WEEK

PROGRAM DATES

STARTING AT 6-WEEKS
Start dates offered twice a month • First and third Monday of each month • Participant chooses ending date

APPLICATION DEADLINES

Four months prior to intended start date

“This experience has allowed me to become more confident in myself and to step out of my comfort zone and do things that I could never dream about doing.” - Bobby G. / St. Xavier University

Scan the QR code with your smart phone's camera and go directly to the API Portugal webpage and **start your application today!**





SCOTLAND

EDINBURGH

POPULATION 465,000

LUSH • RUSTIC • HISTORIC • WALKABLE

- World famous festivals
- Year-round sporting and cultural activities including comedy, theater, literature, film, dance, music, rugby, football, ice hockey and tennis
- Cosmopolitan city surrounded by a dramatic landscape of mountains, valleys and lochs
- Voted "Best City in the UK" (The Telegraph)



VISIT **APIABROAD.COM**

TO APPLY AND LEARN MORE ABOUT YOUR INTERNATIONAL INTERNSHIP!



"I loved all of the cultural events. I will cherish these memories forever!" - Morgan T. / Springfield College

LANGUAGE OF INTERNSHIP

English

HOUSING

Apartments

ACADEMIC CREDIT

FIXED DATE PROGRAMS

6 academic credits for \$600

FLEX DATE PROGRAMS

Credit must be arranged through home institution

DATES AND FEES

FIXED DATES

\$7,995 ADD \$600 TO EARN ACADEMIC CREDIT

PROGRAM DATES 8-WEEK PROGRAM

SUMMER 1 Late May - Late July / SUMMER 2 Mid-June - Mid-August

APPLICATION DEADLINES

SUMMER 1 MAY START February 1 / SUMMER 2 JUNE START March 1

APPLY EARLY! To allow for optimal time for the internship placement process, API encourages applicants to apply 1-2 months BEFORE the final application deadlines. All application materials must be into the API office by the deadline.

FLEX DATES

\$7,350 \$525 EACH ADDITIONAL WEEK

PROGRAM DATES STARTING AT 6-WEEKS

Start dates offered twice a month • First and third Monday of each month • Participant chooses ending date

APPLICATION DEADLINES Four months prior to intended start date

UK VISA SPONSORSHIP FEE INCLUDED IN THE PROGRAM FEE!

API prices include the \$800 mandatory BUNAC visa fees. Other providers charge you extra!

Scan the QR code with your smart phone's camera and go directly to the API Scotland webpage and **start your application today!**





SPAIN

BARCELONA

POPULATION 1,605,000

UNIQUE • INSPIRATIONAL • NATURAL • OCEAN

- Incredible Gaudí architecture
- Located on the Mediterranean Sea
- Catalan language and culture
- Cosmopolitan city with fabulous art, museums and nightlife

MADRID

POPULATION 3,167,000

GRAND • HISTORIC • LIVELY • METROPOLITAN

- Lively, diverse and cosmopolitan city
- Wonderful array of Spanish cities close by
- Very progressive and open-minded
- Spain's capital since 1561

SEVILLE

POPULATION 345,150

TRADITIONAL • CULTURAL • BEAUTIFUL • FLAMENCO

- History and rich Spanish traditions everywhere
- Great weather and only one hour to the beach
- More than 2,000 years of culture and art
- Home to the third largest cathedral in the world

LANGUAGE OF INTERNSHIP

English and Spanish

HOUSING

Apartments and Host Families

ACADEMIC CREDIT

FIXED DATE PROGRAMS

6 academic credits for \$600

FLEX DATE PROGRAMS

Credit must be arranged through home institution

DATES AND FEES

FIXED DATES

\$6,200 ADD \$600 TO EARN ACADEMIC CREDIT

PROGRAM DATES 8-WEEK PROGRAM

SUMMER 1 Late May - Late July / SUMMER 2 Mid-June - Mid-August

APPLICATION DEADLINES

SUMMER 1 MAY START February 1 / SUMMER 2 JUNE START March 1

APPLY EARLY! To allow for optimal time for the internship placement process, API encourages applicants to apply 1-2 months BEFORE the final application deadlines. All application materials must be into the API office by the deadline.

FLEX DATES

\$5,800 \$325 EACH ADDITIONAL WEEK

PROGRAM DATES STARTING AT 6-WEEKS

Start dates offered twice a month • First and third Monday of each month • Participant chooses ending date

APPLICATION DEADLINES Four months prior to intended start date

STUDY ABROAD AND INTERNSHIP IN BARCELONA

This program will begin with **two, 5-week intensive academic courses** taught by faculty onsite. Following the intensive courses, the students will participate in a **7-week full time internship placement**. Students complete each component consecutively, which will allow students dedicated time to focus on the academic courses and internship separately, providing a better balance between study and professional development. Some three-day weekends have been built into the program, leaving plenty of time for exploring the rich local culture of the host site. Students will earn letter grades for the coursework, for a total of **12 credit hours** (2 academic courses for 3 credits each, and 6 credits for their internship coursework).



VISIT **APIABROAD.COM**
TO APPLY AND LEARN MORE ABOUT
YOUR INTERNATIONAL INTERNSHIP!

ADDITIONAL **API OPPORTUNITIES**

STUDY ABROAD PLUS INTERNSHIPS

API offers students the option to participate in an internship while on a semester, academic year, or summer study abroad program. In most cases, students can earn academic credit, though some opportunities are offered without credit. Most internship opportunities are included in the cost of the program, though a few are offered for an additional fee.

ASIA

BHUTAN

THIMPHU

Royal Thimphu College

SEMESTER CREDITS 3 **LANGUAGE** ENGLISH

PLACEMENTS ENVIRONMENTAL ORGANIZATIONS • NGOS

CHINA

SHANGHAI

East China Normal University

SEMESTER CREDITS 4-6 **LANGUAGES** MANDARIN/ENGLISH

PLACEMENTS NGOS

EUROPE

CROATIA

DUBROVNIK

Libertas International University

SEMESTER CREDITS NO CREDIT **LANGUAGE** ENGLISH

PLACEMENTS NGOS • LOCAL NEWS/MEDIA

ENGLAND

LONDON

University of the Arts London

SEMESTER CREDITS NO CREDIT **LANGUAGE** ENGLISH

PLACEMENTS FASHION • FILM STUDIOS • MUSEUMS • THEATERS

University of Westminster

SEMESTER CREDITS 4 **LANGUAGE** ENGLISH

PLACEMENTS WIDE VARIETY OF FIELDS

FRANCE

GRENOBLE

Université Grenoble Alpes (CUEF)

SEMESTER CREDITS 3 **LANGUAGE** FRENCH

PLACEMENTS TEACHING

PARIS

Cours de Civilisation Française de la Sorbonne

Institut Catholique de Paris

Université Paris Dauphine

Université Paris Diderot

SEMESTER CREDITS 3 **LANGUAGES** FRENCH/ENGLISH

PLACEMENTS TEACHING

IRELAND

CORK

University College Cork - National University of Ireland

SEMESTER CREDITS 2.5 **LANGUAGE** ENGLISH

PLACEMENTS WIDE VARIETY OF FIELDS

DUBLIN

University College Dublin

SEMESTER CREDITS NO CREDIT **LANGUAGE** ENGLISH

PLACEMENTS ARCHITECTURE • ENGINEERING

GALWAY

National University of Ireland, Galway

SEMESTER CREDITS 2.5 **LANGUAGE** ENGLISH

PLACEMENTS SERVICE-LEARNING • VOLUNTEER OPPORTUNITIES

LIMERICK

University of Limerick

SEMESTER CREDITS 3 **LANGUAGE** ENGLISH

PLACEMENTS SERVICE-LEARNING • VOLUNTEER OPPORTUNITIES

ITALY

FLORENCE

Lorenzo de' Medici - The Italian International Institute

SEMESTER CREDITS 3 **LANGUAGES** ITALIAN/ENGLISH

PLACEMENTS WIDE VARIETY OF FIELDS

ROME

John Cabot University

SEMESTER CREDITS 3 **LANGUAGES** ITALIAN/ENGLISH

PLACEMENTS BUSINESS • COMMUNICATIONS

Lorenzo de' Medici - The Italian International Institute

SEMESTER CREDITS 3 **LANGUAGES** ITALIAN/ENGLISH

PLACEMENTS FINE ART • MARKETING • PRE-MED/NURSING/HEALTH

TUSCANIA

Lorenzo de' Medici - The Italian International Institute

SEMESTER CREDITS 3 **LANGUAGES** ITALIAN/ENGLISH

PLACEMENTS SERVICE-LEARNING

POLAND

KRAKÓW

Jagiellonian University of Kraków

SEMESTER CREDITS NO CREDIT **LANGUAGES** POLISH/ENGLISH

PLACEMENTS MUSEUMS • VOLUNTEER OPPORTUNITIES

SCOTLAND

EDINBURGH

University of Edinburgh

SEMESTER CREDITS 15-17 **LANGUAGE** ENGLISH

PLACEMENTS GOVERNMENT • LAW • POLITICAL SCIENCE

STIRLING

University of Stirling

SEMESTER CREDITS 3 **LANGUAGE** ENGLISH

PLACEMENTS ENVIRONMENTAL • MARKETING • POLITICS • SPORTS



SPAIN

BILBAO

Universidad de Deusto

SEMESTER CREDITS 4 **LANGUAGES** SPANISH/ENGLISH
PLACEMENTS BUSINESS • EDUCATION • SERVICE-LEARNING

GRANADA

Universidad de Granada

SEMESTER CREDITS 4 **LANGUAGES** SPANISH/ENGLISH
PLACEMENTS BUSINESS • EDUCATION • NGOS

MADRID

Suffolk University

SEMESTER CREDITS 3 **LANGUAGE** ENGLISH
PLACEMENTS BUSINESS • COMMUNICATION • GENDER STUDIES
GOVERNMENT • HISTORY • THEATER • SOCIAL SCIENCES • SCIENCE

SALAMANCA

Universidad de Salamanca

SEMESTER CREDITS 3 **LANGUAGES** SPANISH/ENGLISH
PLACEMENTS TEACHING

LATIN AMERICA

ARGENTINA

BUENOS AIRES

Universidad de Belgrano

SEMESTER CREDITS 3 **LANGUAGE** SPANISH
PLACEMENTS TEACHING

MENDOZA

Universidad de Congreso

SEMESTER CREDITS 3-4 **LANGUAGE** SPANISH
PLACEMENTS WIDE VARIETY OF FIELDS

CHILE

VALPARAÍSO

Pontificia Universidad Católica de Valparaíso

SEMESTER CREDITS 3-6 **LANGUAGE** SPANISH
PLACEMENTS BUSINESS • TOURISM

COSTA RICA

SAN JOSÉ

International Center for Development Studies

SEMESTER CREDITS 3 **LANGUAGES** SPANISH/ENGLISH
PLACEMENTS NGOS

Universidad Veritas

SEMESTER CREDITS 2-3 **LANGUAGES** SPANISH/ENGLISH
PLACEMENTS WIDE VARIETY OF FIELDS

ECUADOR

QUITO

Universidad San Francisco de Quito

SEMESTER CREDITS 3 **LANGUAGE** SPANISH
PLACEMENTS GOVERNMENT • NGOS • SERVICE LEARNING

SOUTH PACIFIC

AUSTRALIA

BRISBANE/GOLD COAST

Griffith University

SEMESTER CREDITS 3-4 **LANGUAGE** ENGLISH
PLACEMENTS WIDE VARIETY OF FIELDS

MELBOURNE

La Trobe University

SEMESTER CREDITS 3-4 **LANGUAGE** ENGLISH
PLACEMENTS MEDIA STUDIES • SPORTS JOURNALISM

SYDNEY

Macquarie University

SEMESTER CREDITS 3-4 **LANGUAGE** ENGLISH
PLACEMENTS BUSINESS • HUMAN RESOURCES • MARKETING

NEW ZEALAND

AUCKLAND

AUT University

SEMESTER CREDITS 6-8 **LANGUAGE** ENGLISH
PLACEMENTS WIDE VARIETY OF FIELDS

CUSTOMIZED GROUP INTERNSHIPS

In addition to working with individual participants on tailored internship placements, API can work with colleges and universities to develop custom internship programs to fit each institution's needs.

Contact API today at (512) 600-8937 or via e-mail at intern@apiabroad.com to discover how we can build a great program together!

- API can work with an institution to completely customize an internship program, OR the institution can decide to rebrand a standard API program as its own.
- API internship programs may be customized to suit a variety of majors or address a specific academic focus.
- Dates and program lengths can be tailored to fit the institution's schedule.
- Customized program model offers institutions more ownership in the program.

API'S COMMITMENT TO **DIVERSITY AND INCLUSION**

API IS COMMITTED TO PROVIDING ENRICHING INTERNATIONAL EXPERIENCES TO ITS PARTICIPANTS.

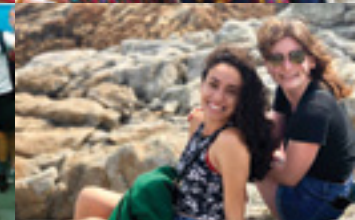
We believe in the importance of promoting acceptance, dignity, and respect among people of all backgrounds.

API demonstrates its commitment to inclusiveness by providing affordable and accessible programs, offering individualized support, and conducting ongoing diversity education and training for all API staff.

No matter who you are or where you come from, API will support you during your journey abroad.

API does not discriminate against any individual based on ethnicity, nationality, ancestry, race, sex, gender identity, creed, age, marital status, sexual orientation, or disability in its admissions decisions, program activities or employment practices.

“Travel is fatal to prejudice, bigotry and narrow-mindedness, and many of our people need it sorely on these accounts. Broad, wholesome, charitable views of humans and things can not be acquired by vegetating in one little corner of the earth all one's lifetime.” - Mark Twain





THERE IS NO PASSION TO BE
FOUND IN SETTling FOR A LIFE
THAT IS LESS THAN THE ONE YOU
ARE CAPABLE OF LIVING. - NELSON MANDELA



APIABROAD.COM • #ISPYAPI • #APIABROAD • (800) 844-4124

301 CAMP CRAFT RD. • SUITE 100 • AUSTIN, TEXAS 78746-6501 • 512/600-8900 • 512/600-8999 FAX • API@APIABROAD.COM

LEARNING TRANSFORMED. LIFE TRANSFORMING.