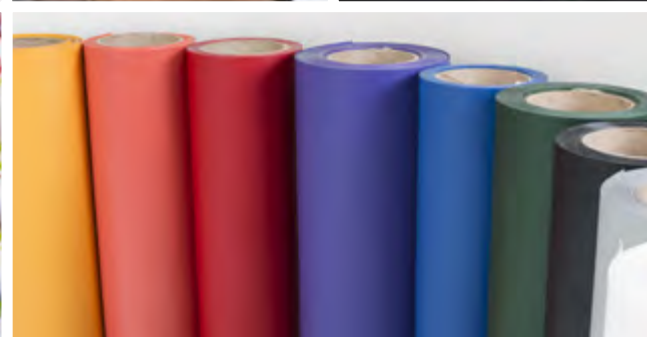
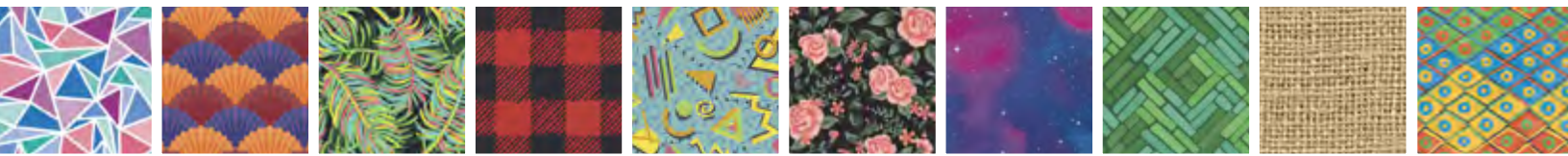




# HEAT PRESS FOR PROFIT



## 2020 PRODUCT CATALOG



## DEDICATED TO HELPING YOU GROW YOUR BUSINESS

### A FAMILY CULTURE OF SUPPORT

Ever since our great-grandfather A.C. Stahl founded the company in 1932, our mission has been to make it easier for garment decorators to succeed. When our grandparents Ricki and Ernie Stahl took over the business, they made even greater strides, introducing thermal adhesives, custom cutting services, and a wider selection of materials. In the late '70s, our father Ted and Uncle Brian continued building a strong foundation of innovative heat printing products and services, including the world's best-selling Thermo-FILM® and Hotronix® heat presses.

### COMMITTED TO YOUR SUCCESS

Today, STAHL'S® remains committed to consistently bringing you the products and services you need to help your business grow and thrive. This includes a huge emphasis on offering the most innovative products, the friendliest (and most knowledgeable) customer service, the fastest shipping, and the most comprehensive heat printing education you'll find anywhere.

### FAMILY ENVIRONMENT AND VALUES

We also strive to make our team members feel like part of the family. Many have been working here for 25 years or more and all share our passion for family values and building relationships with you.

### KEEPING THINGS SIMPLE

Thank you for choosing STAHL'S® as your trusted heat printing supplier. We promise to continue building on the simple vision that started it all — making your life easier by making it easier to print custom garments.

From our family to yours,

Brett Stahl  
[Brett@stahls.com](mailto:Brett@stahls.com)

Daniel Stahl  
[Dan@stahls.com](mailto:Dan@stahls.com)

*P.S. We are always happy to hear from you. Your feedback is important and we value your ideas. If there's anything at all you think we could be doing better, please let us know. We're here to help.*

# TABLE OF CONTENTS

<b>CAD-CUT® Heat Transfer Vinyl</b>		<b>STAHLS® Spirit Sale™</b>	<b>40</b>
Thermo-FILM® & Thermo-GRIP®	3	<b>Custom Logos</b>	
<b>New</b> UltraWeed™	3	Artwork Uploader	43
Premium Plus™	3	Artwork Guidelines	43
Fashion-FILM®	4	FlexStyle® by STAHL'S'	44
Silicone Dye-Block™	4	CAD-PRINTZ® Full Color Digital Logos	46
Metallic	4	CAD-PRINTZ® Non-Apparel	48
Patterns	5	Custom CAD-CUT®	50
Heat Transfer Foil	5	Custom Kiss Cut®	51
Heat Press Adhesive	5	Custom Standard	52
Chalkboard	6	Custom SimStitch®	53
<b>New</b> Chroma Bling	6	Embroidery Express® Sew Files	54
Glitter Flake™	6	TwillStitchPro PLUS®	55
Flock II	7		
Hologram	7	<b>STAHLS' Blank Apparel</b>	<b>56</b>
Glow	7	<b>Equipment &amp; Accessories</b>	
Hi-Vis Color Reflect	8	Hotronix® Heat Presses	58
3M™ Scotchlite™ 5807	8	<b>New</b> 360 IQ® Hat Press	60
Reflective II	8	Heat Press Platens & Accessories	62
Additional Materials	9	Heat Printing Accessories	66
		Vinyl Cutters & Print/Cut Systems	68
<b>CAD-COLOR® Printable Heat Transfer Vinyl</b>		Vinyl Cutter & Print/Cut Accessories	69
<b>New</b> Soft Opaque	11	<b>Additional Resources</b>	
Express Print®	11	STAHLS' Transfer Express™	70
Glitter	11	Transfer Paper Experts	70
SuperTEK® Opaque	12	CadworxLIVE®	70
SuperTEK® Sublistop™	12	Great Dane Graphics	70
SuperTEK® Gloss/Matte Clear	12	Application Instructions	71
Masks	13	Color Charts	72
<b>Letters &amp; Numbers</b>		STAHLS' Services Material Reference	74
Pre-Cut Letters & Numbers	15	STAHLS' Services Size Reference	75
Pre-Cut Numbers	20	Material/Fabric Selection Chart	76
Pre-Spaced Numbers	22		
Pre-Spaced Text	24		
ZIPP Weed® Pre-Spaced Text	25		
Player Perfect®	26		
Team Perfect®	27		
SimStitch® Letters & Numbers	28		
Auto-Stitch Letters & Numbers	30		
Official NHL®/NHLPA® Player Name & Number Kits	31		
CAD-CUT® Templates	32		
<b>Any Word. Any Way.™</b>			
Script Letter Styles	34		
Block Letter Styles	35		
Standard	36		
CAD-CUT®	36		
Kiss Cut® Appliqué	37		
SimStitch®	38		
Sublimated Twill Appliqué & SimStitch®	38		
Distressed Appliqué	39		

ORDER WITH CONFIDENCE  
STAHLS® QUICK SHIP  
PROGRAM

We created the Quick Ship Program with your business in mind. Our most popular products are guaranteed in stock at all STAHL'S® distribution centers – so you'll always get your orders in hand in 1-2 days.

Quick Ship materials are identified with this icon.

*Direct from the manufacturer –  
lower prices and fast,  
flat rate shipping.*



► [stahls.com/cad-cut](https://stahls.com/cad-cut)

# CAD-CUT<sup>®</sup>

## HEAT TRANSFER VINYL

### Quality & Value Delivered Direct

Apparel decorators trust STAHL'S<sup>®</sup> — the inventor and manufacturer of CAD-CUT<sup>®</sup> Heat Transfer Vinyl — for all their decoration needs. As the manufacturer, we control the quality of each product we offer. Our lab-certified materials meet or exceed industry standards, including durability, adhesion, color fastness, and CPSIA compliance. And because you're buying direct from the manufacturer, you can be confident you're getting the best product at the best price.

With an extensive selection of colors, textures, and finishes, STAHL'S<sup>®</sup> offers an advanced line of roll goods for every job, fabric, garment, or textile. From basic cotton to performance nylon and beyond, there's a material that's easy to cut and heat apply or sew on just about any item.

**Expect more from your heat transfer vinyl.**



## CAD-CUT<sup>®</sup> Thermo-FILM<sup>®</sup> & Thermo-GRIP<sup>®</sup>



- Abrasion-resistant
- Superior opacity
- Semi-gloss finish

For teams tough on competition and even rougher on uniforms, Thermo-FILM<sup>®</sup> and Thermo-GRIP<sup>®</sup> have the strength to stick and stay on. Thermo-FILM's superior abrasion-resistance makes it the top pick for contact sports uniforms and Thermo-GRIP's patented adhesive is designed specifically for nylon and nylon mesh. Play after play, game after game, wash after wash, Thermo-FILM<sup>®</sup> and Thermo-GRIP<sup>®</sup> are guaranteed to outlast the life of a team uniform.

Size/Name	1 Yd Roll	5 Yd Roll	10 Yd Roll	25 Yd Roll	50 Yd Roll
15" Thermo-FILM <sup>®</sup>	10.50	42.00	8.40/yd	80.00	7.26/yd
20" Thermo-FILM <sup>®</sup>	13.30	56.25	11.25/yd	106.75	9.52/yd
15" Thermo-GRIP <sup>®</sup>	13.60	57.75	11.55/yd	108.25	9.75/yd
20" Thermo-GRIP <sup>®</sup>	17.35	76.25	15.25/yd	145.00	13.01/yd



## CAD-CUT<sup>®</sup> UltraWeed<sup>™</sup>



- Proudly made in the USA
- Scorch-free application
- Matte finish, soft feel

UltraWeed<sup>™</sup> is the go-to material for everyday projects. With smooth cutting on any vinyl cutter, effortless weeding, and low-temp application, it's guaranteed to give you the ultimate, worry-free experience from start to finish.

Size/Name	1 Yd Roll	5 Yd Roll	10 Yd Roll	25 Yd Roll	50 Yd Roll
15" UltraWeed <sup>™</sup>	9.99	33.50	6.70/yd	62.00	5.49/yd



## CAD-CUT<sup>®</sup> Premium Plus<sup>™</sup> HIGH TACK & LOW TACK



- Soft, matte finish
- High stretch and rebound
- Low-temperature application

With its soft, lightweight feel and high stretch and rebound properties, Premium Plus<sup>™</sup> is one of the most versatile heat transfer materials available. Its low-temperature application prevents scorch marks on heat-sensitive fabrics, making it the perfect choice for performance wear.

Size/Name	1 Yd Roll	5 Yd Roll	10 Yd Roll	25 Yd Roll	50 Yd Roll
20" Premium Plus <sup>™</sup> Low Tack	10.80	37.50	7.50/yd	69.75	6.18/yd
20" Premium Plus <sup>™</sup> High Tack	10.80	37.50	7.50/yd	69.75	6.18/yd

All roll widths are approximate. For reference to materials offered in STAHL'S<sup>®</sup> Services, see page 76.



The industry's best T-shirt film

## CAD-CUT® Fashion-FILM®



- #1 choice for T-shirts
- Soft and flexible
- True matte finish

The sticky carrier of Fashion-FILM® makes it ideal for easily weeding detailed, intricate designs. The hot peel ensures no stressing or distorting of the design when removing the carrier. With a 2-second tack for base layers and a 15-second application time, production is fast and simple.

Size/Name	1 Yd Roll	5 Yd Roll	10 Yd Roll	25 Yd Roll	50 Yd Roll				
15" Fashion-FILM®	9.80	33.50	6.70/yd	62.00	6.20/yd	148.25	5.93/yd	283.25	5.67/yd
20" Fashion-FILM®	11.85	44.00	8.80/yd	82.50	8.25/yd	199.75	7.99/yd	386.25	7.73/yd
15" Fashion-FILM® Electric Colors	10.80	43.75	8.75/yd	83.00	8.30/yd	201.00	8.04/yd	390.00	7.80/yd



Eliminate dye migration today

## CAD-CUT® Silicone Dye-Block™

- Blocks dye migration
- Low-temperature application
- Stretchable, with good recovery
- Matte finish, silicone feel

CAD-CUT® Silicone Dye-Block™ is the industry's first cuttable vinyl solution to fully block dye migration on sublimated sports jerseys. Get the dye-blocking power of silicone without messy ink or the need to burn screens. It features a low-temperature application to reduce scorching and has excellent stretch and rebound.

Size	1 Yd Roll	5 Yd Roll	10 Yd Roll	25 Yd Roll	50 Yd Roll				
20"	18.05	80.00	16.00/yd	152.50	15.25/yd	368.25	14.73/yd	710.75	14.22/yd



Foil-like finish with a soft feel

## CAD-CUT® Metallic

- Easy to cut and weed
- Thin and stretchable
- Holds fine detail

Add a higher-perceived value to designs with Metallic vinyl. This 1-step application gives the look of foil with an incredibly soft feel.

Size	1 Yd Roll	5 Yd Roll	10 Yd Roll	25 Yd Roll	50 Yd Roll				
20"	11.35	46.35	9.27/yd	87.55	8.76/yd	212.45	8.50/yd	412.00	8.24/yd

All roll widths are approximate. For reference to materials offered in STAHL'S® Services, see page 76.



## CAD-CUT® Patterns

- Customizable stylish patterns
- Cuts and weeds easily
- High profit, custom designs

With a wide array of customizable patterns and color options, offer trendy looks to your customers without investing in expensive new equipment. Choose a pattern from our original Creative Studios collection, or pick a one-of-a-kind pattern from our exclusive brand collections. No matter who you're designing for, there's a pattern that's right for your market.

Size/Name	1 Yd Roll		5 Yd Roll		10 Yd Roll		25 Yd Roll	
20" Express Print**	14.35	61.75	12.35/yd	118.50	11.85/yd	—		
20" CAD-COLOR® Glitter*	17.45	77.25	15.45/yd	147.00	14.70/yd	—		
20" ORAJET® Sign Vinyl**	10.30	41.25	8.25/yd	72.25	7.23/yd	175.25	7.01/yd	
12" ORATAPE® Mask	1.80	8.25	1.65/yd	15.50	1.55/yd	35.00	1.40/yd	
20" Magic Mask® Medium Tack	5.65	17.75	3.55/yd	28.75	2.88/yd	—		
20" Magic Mask® High Tack	6.70	22.00	4.40/yd	36.25	3.63/yd	—		

\*Magic Mask® required

\*\*ORATAPE® required



## HEAT Transfer Foil

- Fashionable effects
- Fine detail with Foil
- Metallic finish

With vibrant colors available, STAHL'S® Heat Transfer Foil is the easy, no-mess alternative to screen printing metallic finishes on garments when used with CAD-CUT® Heat Press Adhesive.

Size	Yellow Gold, Bright Silver, Bright Gold	Teal, Sapphire Blue, Orange, Copper, Rose Gold, Green, Pink, Red, Amethyst, Black, Navy, Maroon, Coral, Kiwi, Light Rose	Classic Rainbow, Rainbow Silver, Leopard, Silver Pixie Dust, Silver Waterfall, Silver Champagne, Silver Cracked Ice, Silver Scales
12" x 25'	7.25	7.25	12.50
12" x 200'	25.75	—	—

## CAD-CUT® Heat Press Adhesive



Size	5 Yd Roll		10 Yd Roll		25 Yd Roll		50 Yd Roll	
11.8"	23.75	4.75/yd	40.25	4.03/yd	87.75	3.51/yd	170.00	3.40/yd
20"	40.25	8.05/yd	68.00	6.80/yd	148.25	5.93/yd	288.50	5.77/yd

All roll widths are approximate. For reference to materials offered in STAHL'S® Services, see page 76.



The power of instant customization

## CAD-CUT<sup>®</sup> Chalkboard

**New**

- Personalize with standard, dry chalk
- Low-temperature application
- Thin, with a soft hand

Express yourself through text, drawings, slogans, and more with this interactive heat transfer vinyl. Turn any garment or item into an instant chalkboard that wipes clean with a damp cloth, giving you endless decorating opportunities.

Size	1 Yd Roll	5 Yd Roll	10 Yd Roll	25 Yd Roll	50 Yd Roll	
12"	10.00	40.00	8.00/yd	75.00 7.50/yd	175.00 7.00/yd	325.00 6.50/yd



Unique iridescent vinyl

## CAD-CUT<sup>®</sup> Chroma Bling

**New**

- Iridescent with a high-gloss finish
- Semi-transparent material

Create eye-catching designs that change color based on lighting and the garment it's applied to. This shiny material is semi-transparent and combines a metallic finish with an iridescent shimmer to create a truly unique visual effect.

Size	1 Yd Roll	5 Yd Roll	10 Yd Roll	25 Yd Roll	50 Yd Roll	
20"	14.00	60.00	12.00/yd	110.00 11.00/yd	268.75 10.75/yd	525.00 10.50/yd



Ideal for cheer & spirit wear

## CAD-CUT<sup>®</sup> Glitter Flake



- Highly durable
- Doesn't flake off
- Textured glitter finish

Create brilliant designs that sparkle and shine! This heat transfer glitter vinyl stands out on the playground, on the sidelines, on campus, or anywhere else you'll find fan wear, cheer apparel, and fashion garments.

Size	1 Yd Roll	5 Yd Roll	10 Yd Roll	25 Yd Roll	50 Yd Roll	
12"	—	34.75	6.95/yd	—	305.00 6.10/yd	
20"	14.00	55.00	11.00/yd	105.00 10.50/yd	256.25 10.25/yd	497.50 9.95/yd

All roll widths are approximate. For reference to materials offered in STAHL'S<sup>®</sup> Services, see page 76.





Add texture & depth to designs

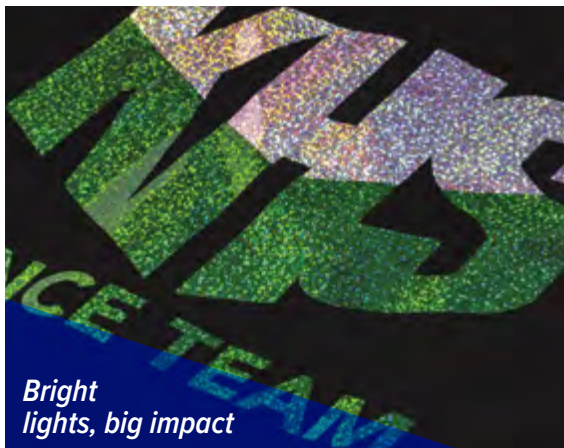
## CAD-CUT® Flock II



- Vibrant long-lasting color
- High-density fiber
- Suede-like finish

Flock II has great texture which makes it an excellent budget-friendly alternative to embroidery for left chest logos and more. It's made with high-density, high-quality fibers making colors more vibrant and long-lasting.

Size	1 Yd Roll	5 Yd Roll	10 Yd Roll	25 Yd Roll	50 Yd Roll
20"	13.40	56.75	11.35/yd	109.25 10.93/yd	271.75 10.87/yd



Bright lights, big impact

## CAD-CUT® Hologram



- Prismatic effect
- Color shifts as garment moves
- Shiny, high-gloss finish

Hologram heat transfer vinyl has a smooth, high-gloss finish giving off a rainbow effect as the garment moves. Create a distinct and unique look with this prism-like material.

Size	1 Yd Roll	5 Yd Roll	25 Yd Roll
20"	9.55	37.50	7.50/yd



Create glow-in-the-dark graphics

## CAD-CUT® Glow



- White in light, glows lime in the dark
- Thin, soft, and extremely durable
- Matte finish

Glow-in-the-dark heat transfer vinyl is great for decorating or personalizing Halloween costumes, spirit wear, promotional T-shirts, bags, and other apparel and accessories.

Size	1 Yd Roll	5 Yd Roll	25 Yd Roll
20"	24.20	110.50	22.10/yd

All roll widths are approximate. For reference to materials offered in STAHL'S® Services, see page 76.



Bright & vivid reflective designs

## CAD-CUT<sup>®</sup> Hi-Vis Color Reflect

- Premium colored reflective finish
- High quality, made with 3M<sup>™</sup> Scotchlite<sup>™</sup> 5807 Reflective material
- Create trendy, high-end designs

Capitalize on the reflective trend with this high-color, high-visibility reflective material for fashion, street, and sportswear.

Size	1 Yd Roll	5 Yd Roll	10 Yd Roll	25 Yd Roll	50 Yd Roll
24"	35.55	165.50 33.10/yd	319.50 31.95/yd	725.00 29.00/yd	1,395.75 27.92/yd

US Patent No. 9,248,470 B2 (other US and worldwide patents pending)



## CAD-CUT<sup>®</sup> 3M<sup>™</sup> Scotchlite<sup>™</sup> 5807



- Brightly reflects vehicle headlights
- Waterproof
- Highly reflective finish
- Meets ANSI/ISEA, CSA 296, and EN 471 standards

High quality retroreflective performance for safety regulated markets.

Size	1 Yd Roll	5 Yd Roll	10 Yd Roll	25 Yd Roll	50 Yd Roll
16"	22.45	101.75 20.35/yd	194.25 19.43/yd	448.25 17.93/yd	849.75 17.00/yd
24"	31.15	145.25 29.05/yd	280.25 28.03/yd	636.25 25.45/yd	1,225.75 24.52/yd



Add reflective accents that get noticed

## CAD-CUT<sup>®</sup> Reflective II



- Excellent accent on garments
- Low-temperature application
- Decorative reflective finish

Affordable, cosmetic reflective special effects for apparel and accessories.

Size	1 Yd Roll	5 Yd Roll	10 Yd Roll	25 Yd Roll	50 Yd Roll
20"	13.95	59.25 11.85/yd	108.25 10.83/yd	260.75 10.43/yd	484.25 9.69/yd

All roll widths are approximate. For reference to materials offered in STAHL'S<sup>®</sup> Services, see page 76.

# ADDITIONAL Materials



## CAD-CUT® Heat Transfer Vinyl

Size	Material	1 Yd Roll		5 Yd Roll		10 Yd Roll		25 Yd Roll		50 Yd Roll	
20"	SportFilm Lite™	9.80	37.50	7.50/yd	69.75	6.98/yd	167.50	6.70/yd	309.00	6.18/yd	
15"	ECONOPRINT®	8.25	31.00	6.20/yd	56.75	5.68/yd	135.25	5.41/yd	257.50	5.15/yd	
19"	GORILLA GRIP® II	12.90	54.25	10.85/yd	102.00	10.20/yd	239.25	9.57/yd	456.75	9.14/yd	

## Twill Fabrics

16"–16.25" width	1 Yd Roll	5 Yd Roll	10 Yd Roll	25 Yd Roll	75 Yd Roll				
Pressure Sensitive Poly-TWILL™ <i>16" for Vinyl, Flatbed, or Laser Cutters</i>	9.50	25.60	5.12/yd	48.25	4.83/yd	113.30	4.53/yd	319.05	4.25/yd
Poly-TWILL™ * <i>16.25" for Flatbed Cutters</i>	7.35	19.85	3.97/yd	36.80	3.68/yd	84.75	3.39/yd	232.55	3.10/yd
Perma-TWILL® <i>16.25" for Laser Cutters</i>	8.65	24.15	4.83/yd	39.70	3.97/yd	91.95	3.68/yd	254.20	3.39/yd

\* Available in Black, Dark Green, Gold, Gray, Navy, Orange, Red, Royal, Vegas Gold, White

## Twill, Appliqué Fabrics, & More

Width	Material	1-4 Yds	5-9	10-24	25+	Full Roll
34"	Acrylic Felt	9.00	8.25	8.00	7.75	50 yds 336.00 6.72/yd
34"	Wool Felt	16.25	14.75	13.75	13.25	50 yds 608.50 12.17/yd
40"	Glitter Flake™	23.75	20.75	19.25	18.00	50 yds 875.50 17.51/yd
51"	Perma-TWILL® <i>For Laser Cutters</i>	15.00	12.75	10.75	10.25	75 yds 706.25 9.42/yd
51"	Poly-TWILL™	10.50	9.50	8.50	8.25	75 yds 577.25 7.70/yd
51"	Pressure Sensitive Poly-TWILL™	16.00	13.75	12.75	12.25	75 yds 792.00 10.56/yd
51"	Uncoated Poly-TWILL™ <i>No Adhesive</i>	8.25	7.00	6.75	5.75	75 yds 405.00 5.40/yd
30"	Thermo-FILM®	8.15	7.05	6.70	6.20	50 yds 286.00 5.72/yd
30"	Thermo-GRIP®	13.95	12.75	11.95	11.45	—
28"	Thermo-Adhesive™	6.10	4.45	4.15	3.85	—
45"	Vinyl	12.90	11.15	10.55	10.10	50 yds 477.50 9.55/yd
58"	Appliqué Materials <i>Gold Rush, Silver Rush</i>	24.25	21.25	19.75	18.50	50 yds 846.25 16.93/yd

Some materials must be sewn for permanent application. Roll widths are approximate. Prices are per yard. Quantity price breaks are per material and color.

## Sign Media



Size	Material	10 Yd Roll		50 Yd Roll	
24"	Pressure Sensitive Sign Vinyl	23.75	2.38/yd	96.50	1.93/yd
20"	DuraSol® Sign Vinyl	—	—	99.50	1.99/yd
30"	DuraSol® Sign Vinyl	—	—	133.50	2.67/yd

▶ stahls.com/ps-poly-twill

▶ stahls.com/perma-twill

▶ stahls.com/ps-sign-vinyl

▶ stahls.com/poly-twill

▶ stahls.com/fabrics

▶ stahls.com/sign-vinyl-rolls

All roll widths are approximate. For reference to materials offered in STAHL'S Services, see page 76.

Full color digital transfers  
for a variety of  
fabrics.



► [stahls.com/printable](https://stahls.com/printable)

# CAD-COLOR<sup>®</sup> PRINTABLE HEAT TRANSFER VINYL

STAHLS' manufactures the most advanced line of printable digital materials in the industry, so you can confidently decorate anything with full color and fine-detailed designs. With a state-of-the-art adhesive backing and soft, lightweight materials engineered to stretch, there is a printable material for use on anything; from tees and tanks, to leather jackets, umbrellas, and beyond.

Have confidence in CAD-COLOR<sup>®</sup>.



## CAD-COLOR® Soft Opaque

**New**

- Excellent opacity on light and dark-colored garments
- Thin, stretchy, and soft
- Fast production

This printable heat transfer vinyl is thin and stretchable, making it ideal for a variety of fabrics. Its superior opacity means the colors will stay bright and stand out on both dark and light-colored garments.

Size	1 Yd Roll	5 Yd Roll		10 Yd Roll		25 Yd Roll		50 Yd Roll	
20"	11.90	49.30	9.86/yd	90.00	9.00/yd	210.10	8.40/yd	400.00	8.00/yd
30"	16.15	67.10	13.42/yd	124.70	12.47/yd	282.00	11.28/yd	550.00	11.00/yd



## CAD-COLOR® Express Print



- Durable and lightweight
- Dries quickly
- Matte finish

Perfect for creating full color transfers with your solvent or eco-solvent based printer for a variety of applications on cotton and cotton/poly blends. It's a production favorite with a fast dry time, easy weeding, and quick masking.

Size	1 Yd Roll	5 Yd Roll		10 Yd Roll		25 Yd Roll	
20"	10.25	38.75	7.75/yd	74.75	7.48/yd	180.25	7.21/yd
30"	16.25	62.25	12.45/yd	118.25	11.83/yd	274.25	10.97/yd
54"	33.75	124.25	24.85/yd	236.50	23.65/ yd	548.50	21.94/yd



## CAD-COLOR® Glitter

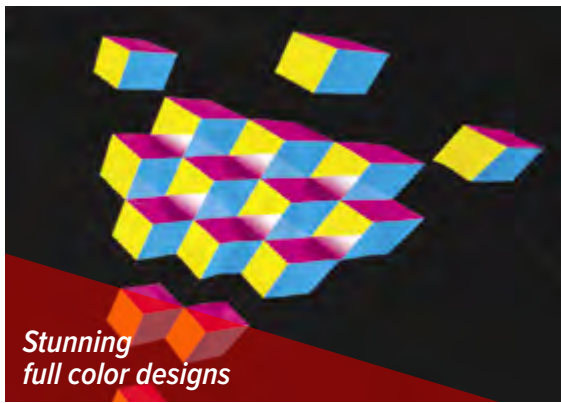


- Eco-solvent printable glitter
- Unique glitter finish
- Dries quickly

Print full color logos in glitter with this printable CAD-COLOR® vinyl. The shimmer finish is ideal for decorating fashion, cheer, and fan wear for a unique look that sells.

Size	1 Yd Roll	5 Yd Roll		10 Yd Roll		25 Yd Roll	
20"	15.00	64.50	12.90/yd	121.25	12.13/yd	289.75	11.59/yd

All roll widths are approximate. For reference to materials offered in STAHL'S® Services, see page 76.



## CAD-COLOR® SuperTEK® Opaque



- Lightweight and stretchable
- Excellent opacity
- Semi-matte finish
- Patented StiX<sup>2</sup>™ adhesive

A printable heat transfer material for use with a solvent or eco-solvent printer. With an incredibly soft hand, it applies to almost any fabric.

Size	1 Yd Roll		5 Yd Roll		10 Yd Roll		25 Yd Roll	
20"	12.00	52.75	10.55/yd	99.50	9.95/yd	230.50	9.22/yd	
40"	—	—	—	—	—	461.00	18.44/yd	



## CAD-COLOR® SuperTEK® Sublistop™



- Excellent stretch and rebound
- Semi-matte finish
- Compatible with solvent and eco-solvent inks

Designed to inhibit dye migration with a charcoal based liner with patented StiX<sup>2</sup>® adhesive, this printable material is engineered with performance wear in mind.

Size	1 Yd Roll		5 Yd Roll		10 Yd Roll		25 Yd Roll	
20"	15.50	74.75	14.95/yd	140.75	14.08/yd	334.00	13.36/yd	
40"	—	—	—	—	—	668.00	26.72/yd	



## CAD-COLOR® SuperTEK® Gloss/ Matte Clear

- Lightweight, stretchable, with a soft hand
- Compatible with solvent and eco-solvent inks
- Patented StiX<sup>2</sup>™ adhesive

For white or light fabrics only, this printable heat transfer vinyl comes in two finishes for the right look no matter what you're decorating.

Size	1 Yd Roll		5 Yd Roll		10 Yd Roll		25 Yd Roll	
20"	12.00	52.75	10.55/yd	99.50	9.95/yd	230.50	9.22/yd	

All roll widths are approximate. For reference to materials offered in STAHL'S® Services, see page 76.

# CAD-COLOR® Masks

## CAD-COLOR® SOLUTIONS® MASK

For use with SuperTEK® Opaque and SuperTEK® Sublistop.

Size	25 Yd Roll	10 M Roll	20 M Roll
23"	—	54.25	102.00
40"	202.75	—	—

## CAD-COLOR® MAGIC MASK® – LOW TACK

For use with thick, non-stretch, printable materials.

Size	10 Yd Roll	25 Yd Roll
15"	35.50	83.75
20"	32.75	75.75
30"	68.00	158.50

## CAD-COLOR® MAGIC MASK® – MEDIUM TACK

Recommended for: Express Print® and Soft Opaque.

Size	1 Yd Roll	5 Yd Roll	10 Yd Roll	25 Yd Roll
15"	—	—	21.75	50.25
20"	5.75	17.75	28.75	66.75
30"	—	—	43.25	100.25

## CAD-COLOR® MAGIC MASK® – HIGH TACK

For use as a sturdy carrier for thick fabrics like Poly-TWILL™.

Size	1 Yd Roll	5 Yd Roll	10 Yd Roll	25 Yd Roll
20"	6.75	22.00	36.25	83.75

All roll widths are approximate. For reference to materials offered in STAHL'S® Services, see page 76.

*Personalization,  
on demand.*



# LETTERS & NUMBERS

**Letters and numbers have been the core of our business since 1932.**

That's why we've put so much time and effort into providing more options, simplified ordering, and online tools which allow you and your teams to visualize the end product before it's even applied.

Pre-aligned or individually pre-cut, STAHL'S' Letters & Numbers come in a variety of popular styles, sizes, materials, and colors. So whether it's team identification or on-demand personalization, STAHL'S' Letters & Numbers remain the fastest, easiest, and most cost-effective decorating method.



# PRE-CUT Letters & Numbers

Available in many styles and heat transfer vinyl, our Pre-Cut Letters & Numbers arrive individually cut, ready to be aligned, and heat pressed.

## PRO BLOCK Letters

# ABCDEFGHIJKLMNOPQRSTUVWXYZ&

**ORDER KITS & SAVE!**

**620 pc. Kit:** 40 each A,E,O,R,S; 20 each of remaining alphabet  
**760 pc. Kit:** 40 each A,C,E,I,L,M,N,O,R,S,T,U; 20 each of remaining alphabet

Size	Pk Size	Acrylic Felt, Poly-TWILL <sup>™</sup> , Thermo-FILM <sup>™</sup> , Vinyl			Wool Felt, Thermo-GRIP <sup>®</sup> , & CAD-CUT <sup>™</sup> Heat Transfer Vinyl: Fashion-FILM <sup>™</sup> , Glitter Flake <sup>™</sup> , GORILLA GRIP <sup>®</sup> II, Hologram, Metallic, Premium Plus <sup>™</sup> High Tack, Reflective II, Silicone Dye-Block <sup>™</sup> , SportFilm Lite <sup>™</sup>		
		Pack	620Kt	760Kt	Pack	620Kt	760Kt
1" * † ‡	20	1.30	—	43.05	1.90	—	61.80
2"	20	1.30	—	43.05	1.90	—	61.80
3" Narrow	10	1.15	60.55	—	1.65	87.30	—
3" †	10	1.30	69.55	—	1.90	99.50	—
4" †	10	2.05	—	—	2.75	—	—
5" † ‡	10	2.70	—	—	3.90	—	—
6" † ‡	10	3.85	—	—	5.45	—	—

For 2-color, double the price shown (Glitter Flake<sup>™</sup>, Hologram, and SportFilm Lite<sup>™</sup> available in 1-color only).

\* 1" not available in Vinyl

† 1", 4", 5", and 6" not available in GORILLA GRIP<sup>®</sup> II

‡ 1", 3", 5", and 6" available in 1-color only

## PRO BLOCK Numbers

**ORDER KITS & SAVE!**

**170 pc. Kit:** 60 #1; 20 #0, #2; 10 each of remaining numbers

# 1234567890

Size	Pk Size	Acrylic Felt, Poly-TWILL <sup>™</sup> , Thermo-FILM <sup>™</sup> , Vinyl			Wool Felt, Thermo-GRIP <sup>®</sup> , & CAD-CUT <sup>™</sup> Heat Transfer Vinyl: Fashion-FILM <sup>™</sup> , Glitter Flake <sup>™</sup> , GORILLA GRIP <sup>®</sup> II, Hologram, Metallic, Premium Plus <sup>™</sup> High Tack, Reflective II, Silicone Dye-Block <sup>™</sup> , SportFilm Lite <sup>™</sup>	
		Pack	5-Pack Poly-TWILL <sup>™</sup> ONLY	170Kt	Pack	170Kt
1" * † ‡	20	1.30	—	—	1.90	—
2"	20	1.30	—	—	1.90	—
3" Narrow	10	1.15	—	—	1.65	—
3" †	10	1.30	—	—	1.90	—
4" †	10	1.95	1.35	28.70	2.70	41.45
6"	10	3.05	2.25	46.20	4.40	66.35
8"	10	3.90	2.80	58.35	5.55	84.10
10"	10	5.40	3.90	82.25	7.80	119.40
12" †	10	7.00	4.95	—	10.15	—

For 2-color, double the price shown (Glitter Flake<sup>™</sup>, Hologram, and SportFilm Lite<sup>™</sup> available in 1-color only).

\* 1" not available in Vinyl

† 1" and 12" not available in GORILLA GRIP<sup>®</sup> II

‡ 1" and 3" available in 1-color only

## PRE-CUT Varsity Letters

# A B C D E F G H I J K L M N O P Q R S T U V W X Y Z &

**ORDER KITS & SAVE!**

**620 pc. Kit:** 40 each A,E,O,R,S; 20 each of remaining alphabet

Acrylic Felt, Poly-TWILL<sup>™</sup>, Thermo-FILM<sup>®</sup>, Vinyl

Wool Felt, Thermo-GRIP<sup>®</sup>, & CAD-CUT<sup>®</sup> Heat Transfer Vinyl: Fashion-FILM<sup>®</sup>, Glitter Flake<sup>™</sup>, GORILLA GRIP<sup>®</sup> II, Hologram, Metallic, Premium Plus<sup>™</sup> High Tack, Reflective II, Silicone Dye-Block<sup>™</sup>, SportFilm Lite<sup>™</sup>

Size	Pk Size	Pack	620Kt	Pack	620Kt
2"	20	2.10	56.25	3.00	80.65
3" Narrow	10	1.30	69.55	1.90	100.55
3" *	10	1.45	80.15	2.15	115.95
4" †	10	2.35	—	3.30	—
5" †	10	3.65	—	5.15	—
6" †	10	4.55	—	6.45	—
8" †	10	6.35	—	9.15	—

For 2-color, double the price shown (Glitter Flake<sup>™</sup>, Hologram, and SportFilm Lite<sup>™</sup> available in 1-color only).

\* 3" available in 1-color only

† 4", 5", 6", and 8" not available in GORILLA GRIP<sup>®</sup> II

## PRE-CUT Varsity Numbers

# 1 2 3 4 5 6 7 8 9 0

**ORDER KITS & SAVE!**

**Team Set Foreground/Background:** Thermo-FILM<sup>®</sup>, 31 pieces – numbers 1-20 consecutively  
**170 pc. Kit:** 60 #1; 20 #0, #2; 10 each of remaining numbers

Acrylic Felt, Poly-TWILL<sup>™</sup>, Thermo-FILM<sup>®</sup>, Vinyl

Wool Felt, Thermo-GRIP<sup>®</sup>, & CAD-CUT<sup>®</sup> Heat Transfer Vinyl: Fashion-FILM<sup>®</sup>, Glitter Flake<sup>™</sup>, GORILLA GRIP<sup>®</sup> II, Hologram, Metallic, Premium Plus<sup>™</sup> High Tack, Reflective II, Silicone Dye-Block<sup>™</sup>, SportFilm Lite<sup>™</sup>

Size	Pk Size	Pack	5-Pack Poly-TWILL <sup>™</sup> ONLY	Team Set	170Kt	Pack	Team Set	170Kt
2"	20	1.30	—	—	—	1.90	—	—
3" Narrow	10	1.15	—	—	—	1.65	—	—
3" *	10	1.30	—	—	—	1.90	—	—
4"	10	1.95	1.35	9.10	28.70	2.70	12.65	41.45
6"	10	3.05	2.25	13.00	46.20	4.40	18.70	66.35
8"	10	3.90	2.80	16.55	58.35	5.55	23.60	84.10
10"	10	5.40	3.90	22.75	82.25	7.80	33.10	119.40
12" †	10	7.00	4.95	—	—	10.15	—	—

For 2-color, double the price shown (Glitter Flake<sup>™</sup>, Hologram, and SportFilm Lite<sup>™</sup> available in 1-color only).

\* 3" available in 1-color only

† 12" not available in GORILLA GRIP<sup>®</sup> II

## PRE-CUT Cooper Letters & Numbers

**ABCDEFGHIJKLMNOPQRSTUVWXYZ&  
1234567890**

**ORDER KITS &  
SAVE!**

**760 pc. Kit:** 40 each A,C,E,I,L,M,N,O,R,S,T,U; 20 each of remaining alphabet

Size	Thermo-FILM®	
	20-Pack	760Kt
¾"	1.40	46.50
1½"	1.40	46.50

*1-color only.*

## PRE-CUT Jiminy Cricket Letters & Numbers

**ABCDEFGHIJKLMNOPQRSTUVWXYZ&  
1234567890**

**ORDER KITS &  
SAVE!**

**760 pc. Kit:** 40 each A,C,E,I,L,M,N,O,R,S,T,U; 20 each of remaining alphabet

Size	Thermo-FILM®	
	20-Pack	760Kt
1/8"	1.40	46.50

*1-color only.*

## PRE-CUT Old English Letters

A B C D E F G H I J K L M N O P Q R S T U V W X Y Z &  
a b c d e f g h i j k l m n o p q r s t u v w x y z &

**ORDER KITS &  
SAVE!**

**310 pc. Kit:** 20 each A,E,O,R,S; 10 each of remaining alphabet  
**620 pc. Kit:** 40 each A,E,O,R,S; 20 each of remaining alphabet

Size	Pk Size	Pack	Thermo-FILM®	
			310Kt	620Kt
1" * †	20	1.55	—	42.20
2"	20	2.25	—	59.70
3"	10	1.60	43.30	—
4" †	10	2.75	—	—

For 2-color, double the price shown.

\* 1" available in 1-color only.

† 1" and 4" lowercase not available.

## PRE-CUT Standard Script Letters

A B C D E F G H I J K L M N O P Q R S T U V W X Y Z &

**ORDER KITS &  
SAVE!**

**620 pc. Kit:** 40 each A,E,O,R,S; 20 each of remaining alphabet

Size	Thermo-FILM®	
	20-Pack	620Kt
2"	2.25	59.70

For 2-color, double the price shown.

## PRE-CUT Tiffany Letters

A B C D E F G H I J K L M N O P Q R S T U V W X Y Z &

**ORDER KITS & SAVE!**

**310 pc. Kit:** 20 each A,E,O,R,S; 10 each of remaining alphabet  
**620 pc. Kit:** 40 each A,E,O,R,S; 20 each of remaining alphabet

Size	Pk Size	Pack	Thermo-FILM®	
			310Kt	620Kt
2"	20	2.25	—	59.70
3"	10	1.60	43.30	—

For 2-color, double the price shown.

## PRE-CUT Mega Greek Letters

A B Γ Δ E Z H Θ I K Λ M N Ξ O Π P Ϛ T Ϙ Φ Χ Ψ Ω  
ALPHA BETA GAMMA DELTA EPSILON ZETA ETA THETA IOTA KAPPA LAMBDA MU NU XI OMICRON PI RHO SIGMA TAU UPSILON PHI CHI PSI OMEGA

Size	Poly-TWILL®, Thermo-FILM®		CAD-CUT® Glitter Flake™, Metallic, Silicone Dye-Block™, Reflective II	
	10-Pack		10-Pack	
4"	2.65		3.95	

For 2-color, double the price shown (Glitter Flake™ available in 1-color only). Vendors who fulfill orders bearing any fraternal organizations' marks must be licensed.

## PRE-CUT Stars



## SIMSTITCH® Twill Name Bars

**No sew:** available in 18 Perma-TWILL® colors

## POLY-TWILL™ Name Bars

**Sewing required:** Black, Gold, Navy, Red, Royal, White

Poly-TWILL®, Thermo-FILM®		
Size	Pk Size	Pack
1"	20	1.60
1½"	20	1.60
2"	20	1.90
2½"	20	2.40
3"	10	1.65

1-color only

Size	10-Pack
3" x 10"	8.50
3" x 12"	9.60
3" x 14"	10.65
3" x 16"	11.70
4" x 14"	11.70
4" x 16"	12.80
4" x 18"	13.85

Size	10-Pack
3" x 10"	4.30
3" x 12"	4.80
3" x 14"	5.35
3" x 16"	5.90
4" x 14"	5.90
4" x 16"	6.40
4" x 18"	6.95

# PRE-CUT Numbers

Adrenaline

01234 35  
56789 35

Apex

01234 35  
56789 35

Arena

12345 35  
67890 35

Athletic Script

01234 35  
56789 35

Big League

12345 35  
67890 35

Billboard

01234 35  
56789 35

Brush Script

01234 35  
56789 35

Chalkboard

01234 35  
56789 35

Coffeehouse

01234 35  
56789 35

Colossus

01234 35  
56789 35

Concrete

01234 35  
56789 35

Cooper

01234 35  
56789 35

Deco

01234 35  
56789 35

Drive

12345 35  
67890 35

Elementary

01234 35  
56789 35

Fable

01234 35  
56789 35

Fahrenheit

01234 35  
56789 35

Future

01234 35  
56789 35

Grand Slam

12345 35  
67890 35

Gridiron

12345 35  
67890 35

Hardball

12345 35  
67890 35

Hero

01234 35  
56789 35

Highway

01234 35  
56789 35

Holiday

01234 35  
56789 35

iGuardian Left

01234 35  
56789 35

iGuardian Right

01234 35  
56789 35

iPowerhouse Left

01234 35  
56789 35

iPowerhouse Right

01234 35  
56789 35

iViper Left

01234 35  
56789 35

iViper Right

01234 35  
56789 35

Intrepid

01234 35  
56789 35

Magnum

01234 35  
56789 35

Marker

01234 35  
56789 35

Metal

01234 35  
56789 35

Metro Script

01234 35  
56789 35

Moto

01234 35  
56789 35

**Moto Bold**

01234 35  
56789

**Octane**

01234 35  
56789

**Outlaw**

01234 35  
56789

**Phantom**

01234 35  
56789

**Primus**

01234 35  
56789

**Pro Block Lite**

12345 35  
67890

**Quasar**

01234 35  
56789

**Rampage**

01234 35  
56789

**Rewind Script**

01234 35  
56789

**Rodeo**

01234 35  
56789

**Rogue**

01234 35  
56789

**Sabre**

01234 35  
56789

**Saturn**

01234 35  
56789

**Shadow**

12345 35  
67890

**Stadium Script**

01234 35  
56789

**Team US**

12345 35  
67890

**Team US Lite**

12345 35  
67890

**Tiffany**

12345 35  
67890

**Titan**

01234 35  
56789

**Typewriter**

01234 35  
56789

**Varsity Lite**

12345 35  
67890

**Warrior**

01234 35  
56789

**World Cup**

01234 35  
56789

**Zombie**

01234 35  
56789

Acrylic Felt, Poly-TWILL<sup>™</sup>, Thermo-FILM<sup>™</sup>, Vinyl

Thermo-GRIP<sup>®</sup> & CAD-CUT<sup>®</sup> Heat Transfer Vinyl: Fashion-FILM<sup>™</sup>, Glitter Flake<sup>™</sup>, GORILLA GRIP<sup>™</sup> II, Hologram, Metallic, Premium Plus<sup>™</sup> High Tack, Silicone Dye-Block<sup>™</sup>, SportFilm Lite<sup>™</sup>, Reflective II

Size	10-Pack	170Kt	10-Pack	170Kt
3"	1.50	—	2.35	—
4"	2.25	33.90	3.35	51.25
6"	3.50	52.85	5.15	78.80
8"	4.35	66.25	6.45	98.55
10"	6.25	95.40	9.40	143.45

For 2-color, double the price shown (Glitter Flake<sup>™</sup>, Hologram, and SportFilm Lite<sup>™</sup> available in 1-color only). Team US, Tiffany, and Shadow not available in 3". Shadow available in 1-color only.

THERE'S MORE! See all styles offered in Pre-Cut Letters & Numbers at [stahls.com/pre-cut](http://stahls.com/pre-cut).



▶ [stahls.com/pre-spaced-numbers](http://stahls.com/pre-spaced-numbers)

## PRE-SPACED Numbers

### Apply 1-99 in one step

Pre-Spaced Numbers come pre-aligned on a carrier, ready to position and heat press on your jersey. Available in the most popular CAD-CUT® materials.

### 1-Color Pre-Spaced Number Styles:

#### Bewitched



#### Bleach



#### Circuit



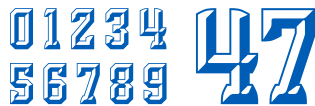
#### Fury



#### Fusion



#### Galactica



#### Gothic Shadow



#### Graffiti



#### High Octane



#### M.A.S.H



#### RAWRR!



#### Sabre Spiked



#### Scoreboard



#### Shatter



#### Soccer



#### Swiss Shadow



#### Team US Fade



#### Team US Pinstripe



#### Titan Stenciled



#### Titan Striped



#### Tribal



#### Varsity Fade



#### Varsity Pinstripe

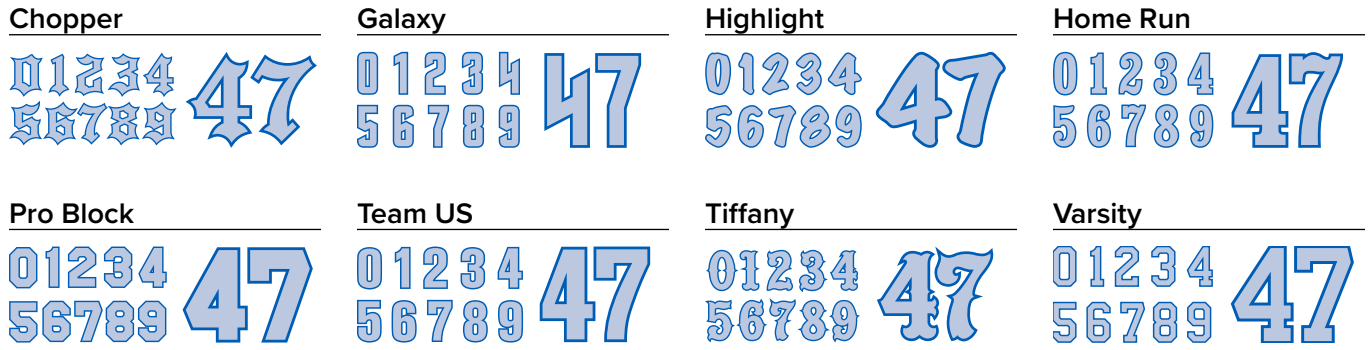


#### World Cup Shadow

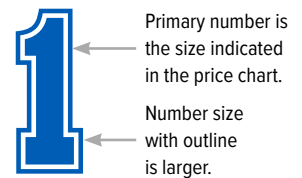




**1 or 2-Color Pre-Spaced Number Styles:**



**Gap Outline Pre-Spaced Number Styles (available in 1-color only):**



CAD-CUT® Heat Transfer Vinyl		
ECONOPRINT®, Premium Plus® High Tack, Thermo-FILM®		Fashion-FILM®, Fashion-FILM® Electric, Flock II, Glitter Flake®, GORILLA GRIP® II, Hologram, Metallic, Reflective II, Silicone Dye-Block®, SportFilm Lite®, Thermo-GRIP®
Size	(5+)	(5+)
4"	1.40	2.50
6"	1.70	3.05
8"	2.30	3.60
10"	2.65	3.95

*Size indicates foreground height. For 2-color, double the price shown (Glitter Flake®, Hologram, and SportFilm Lite® available in 1-color only). Prices are per set. Quantities under 5, add \$1.00 per set, per color. Quantity price breaks are per size, material, color, and style. Because Pre-Spaced Numbers are cut especially for you, we cannot accept returns.*

**To ensure accuracy, orders accepted online or by fax only.**

**Online orders:** [stahls.com/pre-spaced-number](http://stahls.com/pre-spaced-number)

*Pricing is based on orders entered online. STAHL'S® online ordering will walk you through every step of the ordering process. Upload your roster. It's fast and easy.*

**Fax orders: 800-346-2216**

*Twenty-five cents (.25) per name/word will be charged on faxed Pre-Spaced Number orders. All faxed orders must be typed. We do not accept handwritten orders.*

# PRE-SPACED Text

## Athletic Script Uppercase and Lowercase



Straight

Arch

## Classic Uppercase and Lowercase



Straight

Arch

## Galaxy Uppercase



Straight

Arch

## Highlight Uppercase



Straight

Arch

## Home Run Uppercase



Straight

Arch

## Pro Block Uppercase



Straight

Arch

## Team US Uppercase and Lowercase



Straight

Arch

## Tiffany Uppercase



Straight

Arch

## Varsity Uppercase



Straight

Arch

### Horizontal

#### CAD-CUT® Heat Transfer Vinyl

ECONOPRINT® \*, Poly-TWILL®, Premium Plus® High Tack, Thermo-FILM®

Fashion-FILM®, Fashion-FILM® Electric, Flock II, Glitter Flake®, GORILLA GRIP® II, Hologram, Metallic, Reflective II, Silicone Dye-Block®, SportFilm Lite®, Thermo-GRIP®

3M® Scotchlite™ 5807, Hi-Vis Color Reflect

Name Size	Maximum Length	Straight (5+)	Arch (5+)	Straight (5+)	Arch (5+)	Straight (5+)	Arch (5+)
5/8" **	up to 5"	1.20	1.70	1.50	2.05	3.10	4.30
1" †	up to 5"	1.20	1.70	1.50	2.05	3.10	4.30
1" †	up to 14"	1.65	2.20	2.00	2.50	4.20	5.30
1½" †	up to 14"	1.65	2.20	2.00	2.50	4.20	5.30
2"	up to 14"	1.65	2.20	2.00	2.50	4.20	5.30
2½"	up to 14"	1.95	2.45	2.30	2.75	4.85	5.80
2¾"	up to 14"	1.95	2.45	2.30	2.75	4.85	5.80
3"	up to 14"	1.95	2.45	2.30	2.75	4.85	5.80
3½"	up to 14"	2.25	2.70	2.55	3.00	5.30	6.35
4"	up to 14"	2.25	2.70	2.55	3.00	5.30	6.35

### Vertical

(Pro Block & Varsity)

Premium Plus® High Tack, Thermo-FILM®

Fashion-FILM®, Fashion-FILM® Electric, Flock II, Glitter Flake®, GORILLA GRIP® II, Hologram, Metallic, Reflective II, Silicone Dye-Block®, SportFilm Lite®, Thermo-GRIP®

3M® Scotchlite™ 5807, Hi-Vis Color Reflect

	Width	Maximum Length	(5+)	(5+)	(5+)
Sleeve	1½"	11"	2.20	2.50	5.35
Sleeve/Pant	2"	14"	2.20	2.50	5.35
Pant	3"	24"	3.50	4.35	9.40

\* ECONOPRINT is available in 2" and up.

\*\* 5/8" not available in Poly-TWILL™ or GORILLA GRIP® II.

† 1" and 1½" not available in Poly-TWILL™.

Size indicates foreground height. For 2-color, double the price shown (3M™ Scotchlite™ 5807, Glitter Flake™, Hologram, SportFilm Lite™, and 5/8" available in 1-color only). Capital height will vary depending on the number of letters. Punctuation not available in Vertical Layout. Prices are per name. Quantities under 5, add \$1.00 per name, per color. Quantity price breaks are per size, material, color, style, and layout. Because Pre-Spaced Text or Vertical Text are cut especially for you, we cannot accept returns. We reserve the right to refuse to produce any design considered to be in poor taste or offensive.

To ensure accuracy, orders accepted online or by fax only.

Online orders: [stahls.com/pre-spaced-text](http://stahls.com/pre-spaced-text) & [stahls.com/pre-spaced-vertical](http://stahls.com/pre-spaced-vertical)

Pricing is based on orders entered online. STAHL'S® online ordering will walk you through every step of the ordering process.

Upload your roster. It's fast and easy.

Fax orders: 800-346-2216

Twenty-five cents (.25) per name/word will be charged on faxed Pre-Spaced Text orders. All faxed orders must be typed.

We do not accept handwritten orders.





► [stahls.com/zip-weed](http://stahls.com/zip-weed)

## ZIPP WEED® Pre-Spaced Text

### Fast & Economical

Your ZIPP Weed® Pre-Spaced Text arrives on a carrier with cavities removed and a center notch for easy alignment on apparel. Remove the excess material, position, heat apply, and pull away the carrier for perfectly-spaced lettering.

CAD-CUT® Heat Transfer Vinyl					
		Thermo-FILM®		Thermo-GRIP®	
Name Size	Maximum Length	Straight (5+)	Arch (5+)	Straight (5+)	Arch (5+)
5/8"	up to 5"	.95	1.30	1.15	1.55
1"	up to 5"	.95	1.30	1.15	1.55
1"	up to 14"	1.25	1.65	1.50	1.90
1½"	up to 14"	1.25	1.65	1.50	1.90
2"	up to 14"	1.25	1.65	1.50	1.90
2½"	up to 14"	1.45	1.90	1.70	2.10
2¾"	up to 14"	1.45	1.90	1.70	2.10
3"	up to 14"	1.45	1.90	1.70	2.10
3½"	up to 14"	1.70	2.05	1.95	2.30
4"	up to 14"	1.70	2.05	1.95	2.30

Prices are per name. Quantities under 5, add \$.75 per name, per color. Quantity price breaks are per size, material, color, style, and layout. Because ZIPP Weed® is cut especially for you, we cannot accept returns. We reserve the right to refuse to produce any design considered to be in poor taste or offensive.

SAVE UP TO 70¢ PER WORD OVER STANDARD PRE-SPACED PRICING!

# ZIPP Weed

To ensure accuracy, orders accepted online or by fax only.

Online orders: [stahls.com/zip-weed](http://stahls.com/zip-weed)

Pricing is based on orders entered online. STAHL'S online ordering will walk you through every step of the ordering process. Upload your roster. It's fast and easy.

Fax orders: 800-346-2216

Twenty-five cents (.25) per name/word will be charged on faxed ZIPP Weed® orders. All faxed orders must be typed. We do not accept handwritten orders.

# PLAYER PERFECT®

## Pre-Spaced Text & Number

### Galaxy Uppercase

JACKSON  
75  
Straight

JACKSON  
75  
Arch

### Highlight Uppercase

JACKSON  
75  
Straight

JACKSON  
75  
Arch

### Home Run Uppercase

JACKSON  
75  
Straight

JACKSON  
75  
Arch

### Pro Block Uppercase

JACKSON  
75  
Straight

JACKSON  
75  
Arch

### Pro Outline Uppercase – 1-color only

JACKSON  
75  
Straight

JACKSON  
75  
Arch

### Team US Uppercase and Lowercase

Jackson  
75  
Straight

Jackson  
75  
Arch

### Tiffany Uppercase

JACKSON  
75  
Straight

JACKSON  
75  
Arch

### Varsity Uppercase

JACKSON  
75  
Straight

JACKSON  
75  
Arch

#### CAD-CUT® Heat Transfer Vinyl

ECONOPRINT®, Premium Plus™ High Tack, Thermo-FILM®

Fashion-FILM®, Fashion-FILM® Electric, Flock II, Glitter Flake™, GORILLA GRIP® II, Hologram, Metallic, Reflective II, Silicone Dye-Block™, SportFilm Lite™, Thermo-GRIP®

Name Size	Number Size	Maximum Length	Straight (5+)	Arch (5+)	Straight (5+)	Arch (5+)
2"	6"	up to 14"	3.30	3.80	4.90	5.40
2"	8"	up to 14"	3.70	4.15	5.30	5.75
2½"	8"	up to 14"	3.95	4.40	5.55	6.00
2½"	10"	up to 14"	4.20	4.65	5.80	6.25
3"	8"	up to 14"	4.20	4.65	5.80	6.25
3"	10"	up to 14"	4.45	4.90	6.05	6.50

Size indicates foreground height. Distance between name and number approximately 1¾". For 2-color, double the price shown (Glitter Flake™, Hologram, and SportFilm Lite™ available in 1-color only). Prices are per set. Quantities under 5, add \$1.00 per set, per color. Quantity price breaks are per size, material, color, style, and layout. Because Player Perfect® sets are cut especially for you, we cannot accept returns. We reserve the right to refuse to produce any design considered to be in poor taste or offensive.

To ensure accuracy, orders accepted online or by fax only.

Online orders: [stahls.com/player-perfect](http://stahls.com/player-perfect)

Pricing is based on orders entered online. STAHL'S® online ordering will walk you through every step of the ordering process. Upload your roster. It's fast and easy.

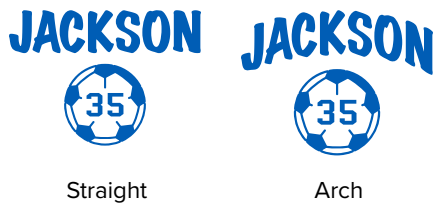
Fax orders: 800-346-2216

Twenty-five cents (.25) per name/word will be charged on faxed Player Perfect® orders. All faxed orders must be typed. We do not accept handwritten orders.

# TEAM PERFECT®

## Pre-Spaced Team Name & Graphic/Number

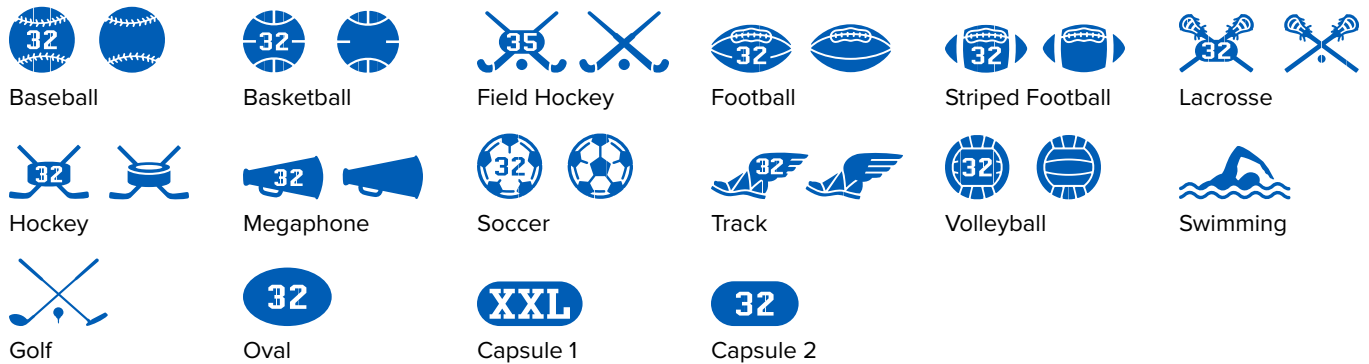
### Layouts



### Fonts



### Graphics\*



\*Graphics only available as part of a Team Perfect® set. Graphics can be ordered with or without numbers or letters placed inside them. Pro Block or Varsity only, limit four characters (two characters in ¾").

CAD-CUT® Heat Transfer Vinyl	
ECONOPRINT®, Premium Plus® High Tack, Thermo-FILM®	Fashion-FILM®, Fashion-FILM® Electric, Flock II, Glitter Flake®, GORILLA GRIP® II, Hologram, Metallic, Reflective II, Silicone Dye-Block®, SportFilm Lite®, Thermo-GRIP®

Name Size	Maximum Name Length	Approximate Height*	Straight (5+)	Arch (5+)	Straight (5+)	Arch (5+)
¾"	up to 3½"	1.85" – 2.32"	1.95	2.20	2.50	2.70
2"	up to 14"	4.95" – 6.16"	3.30	3.75	4.90	5.30
2½"	up to 14"	6.19" – 7.71"	3.95	4.35	5.55	5.90
3"	up to 14"	7.42" – 9.19"	4.20	4.60	5.80	6.15

\* Graphic selected will determine actual height

1-color only. Prices are per set. Quantities under 5, add \$1.00 per set, per color. Quantity price breaks are per size, material, color, style, and layout. Team Perfect® sets are cut especially for you. We cannot accept returns. We reserve the right to refuse to produce any design considered to be in poor taste or offensive.

To ensure accuracy, orders accepted online or by fax only.

Online orders: [stahls.com/team-perfect](http://stahls.com/team-perfect)

Pricing is based on orders entered online. STAHL'S online ordering will walk you through every step of the ordering process. Upload your roster. It's fast and easy.

Fax orders: 800-346-2216

Twenty-five cents (.25) per name/word will be charged on faxed Team Perfect® orders. All faxed orders must be typed. We do not accept handwritten orders.

# SIMSTITCH® Letters & Numbers

Save stitches. Save time.

Get the classic look of sewn embroidery with all the speed, ease, and economy of a heat press. SimStitch® is made from durable Perma-TWILL® and features a laser-etched zigzag stitch. Choose from a variety of sizes and styles in 18 popular athletic colors.

## Pro Block

**ABCDEFGHIJKLMNOPQRSTUVWXYZ &  
1234567890**

Letters: 2", 3" Narrow, 3", 4", 6" • Numbers: 2", 3" Narrow, 3", 4", 6", 8", 10", 12"

## Team US

**1234567890**

Numbers: 4", 6", 8", 10"

## Tiffany

**ABCDEFGHIJKLMNOPQRSTUVWXYZ &  
1234567890**

Letters: 2", 3" • Numbers: 2", 3", 4", 6", 8", 10"

## Varsity

**ABCDEFGHIJKLMNOPQRSTUVWXYZ &  
1234567890**

Letters: 2", 3" Narrow, 3", 4", 6", 8" • Numbers: 2", 3" Narrow, 3", 4", 6", 8", 10", 12"

Size	Per Piece	170Kt (Numbers Kit)	620Kt (Letters Kit)
2"	.35	56.55	195.35
3"	.46	75.39	260.48
3" Narrow	.50	82.25	284.16
4"	.64	102.80	355.19
6"	.79	128.81	445.05
8"	1.16	189.10	653.33
10"	1.67	268.51	—
12"	2.01	323.29	—

For 2-color, double the price shown.

Numbers Kit: 60 #1; 20 #0, #2; 10 each of remaining • Letters Kit: 40 each A, E, O, R, S; 20 each of remaining



### Mega Greek



Letters: 4"

Size	Per Piece
4"	.85

*For 2-color, double the price shown. Vendors who fulfill orders bearing any fraternal organizations' marks must be licensed.*

### 3D Mega Greek Available



Visit [stahls.com/mega-greek](http://stahls.com/mega-greek) for sizes and pricing.

*The dimensional effect may not be as apparent if selecting very light or very dark colors.*

COMING SOON...  
**PRE-SPACED SIMSTITCH®**

*SimStitch® Only Faster*

Get the classic look of popular SimStitch — without the hassle of single letter application. Now you'll be able to order your favorite SimStitch styles and sizes, pre-spaced and ready to heat apply.

**Coming Early 2020**

# AUTO-STITCH Letters & Numbers

## Use specialty cut letters and numbers with sew files.

Auto-Stitch digitized sew files contain a complete alphabet or number sequence in the size and font styles listed below. Keep appliqué letters and numbers in stock and sew on demand.

## Ordering an Auto-Stitch number sequence sew file is easy.

Simply specify machine format, 1 or 2-color, and zigzag or satin stitch. To use this product, editing capabilities are required to merge into a single layout. The amount of Auto-Stitch numbers that can be combined may be limited by sewing field available.

Stock Pre-Cut Numbers cannot be used with Auto-Stitch sew files.

### LETTERS

		Poly-TWILL™			Appliqué Fabrics, Pressure Sensitive Poly-TWILL™		
Size		5	10	50	5	10	50
Pro Block, Varsity	2"	.19	.13	.11	.27	.18	.15
	3" Narrow	.24	.16	.14	.34	.23	.21
	4"	.33	.23	.20	.48	.32	.29
	6"	.58	.38	.35	.83	.56	.52
	8"	.80	.54	.48	1.16	.77	.70
Mega Greek	2"	.19	.13	.11	.27	.18	.15
	4"	.33	.23	.20	.48	.32	.29
Greek	6"	.58	.38	.35	.83	.56	.52

*For 2-color, double the price shown. Vendors who fulfill orders bearing any fraternal organizations' marks must be licensed. Prices are per piece. 5 piece minimum. Order in multiples of 5. Quantity price breaks are per size, style, material, and color.*

### NUMBERS

		Poly-TWILL™			Appliqué Fabrics, Pressure Sensitive Poly-TWILL™		
Size		5	10	50	5	10	50
Pro Block, Varsity	2"	.19	.13	.11	.27	.18	.15
	3"	.24	.16	.14	.34	.23	.21
	4"	.33	.23	.20	.48	.32	.29
	6"	.58	.38	.35	.83	.56	.52
	8"	.80	.54	.48	1.16	.77	.70
	10"	.92	.64	.59	1.34	.94	.85
	12"	1.08	.75	.67	1.57	1.08	.98

*For 2-color, double the price shown. Prices are per piece. 5 piece minimum. Order in multiples of 5. Quantity price breaks are per size, style, material, and color.*

For more information on STAHL'S® Embroidery Express® sew files, see page 55.



# OFFICIAL NHL®/NHLPA® Player Name & Number Kits

Decorate officially licensed jerseys with an NHL® player or a personal name and number with NHL® Player Name and Number Kits.

Each kit includes: player name, player number, sleeve number, applicable “C” or “A”, and an official NHL® player label and hang tag. Twill name and number can be set in place with a heat press, but must be sewn for permanent application.

Per player, purchased in multiples of 5				
	1-4	5	10	100
<b>Teams:</b> Colorado Avalanche (alt.); Detroit Red Wings (dark, white); Edmonton Oilers (alt.); Toronto Maple Leafs (dark, white); Vancouver Canucks (dark, white)				
1-color name, 1-color number – single digit	19.00	16.80	14.85	14.25
1-color name, 1-color number – double digit	22.70	19.70	16.80	15.90
<b>Teams:</b> Arizona Coyotes (dark, white); Buffalo Sabres (dark, white); Chicago Blackhawks (dark, white); Colorado Avalanche (dark, white); Los Angeles Kings (dark, white); Minnesota Wild (dark, white); Montreal Canadiens (dark); Philadelphia Flyers (alt., dark, white); Pittsburgh Penguins (alt., dark, white); San Jose Sharks (alt.); Winnipeg Jets (alt., dark, white)				
1-color name, 2-color number – single digit	23.00	19.80	16.90	16.00
1-color name, 2-color number – double digit	30.20	25.35	20.50	19.20
<b>Teams:</b> Montreal Canadiens (white); St. Louis Blues (alt., dark, white); Tampa Bay Lightning (dark, white); Vancouver Canucks (alt.)				
1-color name, 3-color number – single digit	27.00	22.90	19.00	17.75
1-color name, 3-color number – double digit	37.60	30.70	24.35	22.50
<b>Teams:</b> Arizona Coyotes (alt.); Boston Bruins (alt., dark, white); Calgary Flames (alt.); Carolina Hurricanes (alt., dark, white); New Jersey Devils (alt., dark, white); New York Islanders (alt., dark, white); New York Rangers (dark, white); San Jose Sharks (dark, white); Washington Capitals (alt., dark, white)				
2-color name, 2-color number – single digit	26.30	22.25	18.45	17.35
2-color name, 2-color number – double digit	33.40	28.55	22.05	20.40
<b>Team:</b> Calgary Flames (dark, white)				
2-color name, 3-color number – single digit	30.30	25.25	20.50	19.10
2-color name, 3-color number – double digit	40.90	33.10	25.90	23.70
<b>Teams:</b> Anaheim Ducks (alt., dark, white); Los Angeles Kings (alt.)				
3-color name, 3-color number – single digit	33.50	27.65	22.05	20.40
3-color name, 3-color number – double digit	44.10	35.45	27.40	25.05
<b>Teams:</b> Columbus Blue Jackets (alt., dark, white); Dallas Stars (dark, white); Edmonton Oilers (dark, white); Florida Panthers (dark, white); Ottawa Senators (dark, white)				
Sublimated Twill Faux Perforated – single digit	23.00	19.80	16.90	16.00
Sublimated Twill Faux Perforated – double digit	30.20	25.35	20.50	19.20
<b>Team:</b> Nashville Predators (dark, white)				
Sublimated Twill – single digit	23.00	19.80	16.90	16.00
Sublimated Twill – double digit	30.20	25.35	20.50	19.20

Price includes license fee. Same prices for youth sizes. Personalized names add \$4.00.

**Player name and number may only be sewn onto officially licensed NHL® jerseys for the appropriate team.**

All sizes, colors, styles, materials, and prices are subject to change without notice. Twill Name Bars available for purchase with NHL® Player Name and Number Kits – \$2.75 each.

NHL, the NHL Shield, and Stanley Cup are registered trademarks of the National Hockey League. All NHL logos and marks and team logos and marks depicted herein are the property of the NHL and the respective teams and may not be reproduced without the prior written consent of NHL Enterprises, L.P. ©NHL 2020. All Rights Reserved. National Hockey League Players' Association, NHLPA and NHLPA logo are trademarks of the NHLPA and are used, under license by STAHL'S' ©NHLPA. ©STAHL'S' 2020

Ideal for team rosters, fan wear, monograms, cheer & spirit, events, clubs, holidays, schools, graphic tees, and much more.

▶ [stahls.com/templates](http://stahls.com/templates)

## CAD-CUT® Templates

Customizable Templates, Text, & Clipart

**Free and easy to use**, STAHL'S® online designer provides customizable templates, text, and clipart to make 1-color CAD-CUT® Heat Transfer Vinyl designs for popular decorating markets.

### 1. Choose a template

Select a layout from our stock template library.



### 3. Heat apply it

Your design will arrive on a carrier, ready to heat apply.



### 2. Customize it

Change color, text, font style, clipart, and material.



Pricing is generated dynamically as you customize. Go online, log in, and start a design at [stahls.com/templates](http://stahls.com/templates).



▶ [stahls.com/awaw](https://stahls.com/awaw)

# ANY WORD. ANY WAY.™

## Whatever The Style, We Put It Into Words

Creating custom lettering with special layouts is easy with the Any Word. Any Way.™ online designer.

Slanted text? Tails? Split front for jerseys? Text can be customized in a variety of sizes, fonts, and colors. Sew and no-sew material options are available. There are thousands of ways to mix and match lettering options for a unique look.

# ANY WORD. ANY WAY.™

## Script Letter Styles

**Sizes** (size indicates foreground)

<b>Extra Small*</b>	Capital height 1"	width up to 6"	<b>Large</b>	Capital height 3"	width up to 12¾"
<b>Small</b>	Capital height 2"	width up to 9½"	<b>X-Large</b>	Capital height 3½"	width up to 14"
<b>Medium</b>	Capital height 2½"	width up to 11¼"	<b>XX-Large</b>	Capital height 4.0"	width up to 15"
<b>Standard</b>	Capital height 2¾"	width up to 12"	<b>Mega</b>	Capital height 4½"	width up to 17"

\*Only available in CAD-CUT™ Any Word. Any Way.™

### Colors

*Jackson*

1-color

*Jackson*

2-color

*Jackson*

3-color

### Foreground Cap

*Jackson*

Non-Connected Cap

*Jackson*

Connected Cap

*Jackson*

Regular

*Jackson*

Detailed

*Jackson*

Cloud

### Background Style

### Split Front Options

*Jackson*

Overlap Split Front

*Jac kson*

Extension Split Front

*Jackson*

Custom Overlap

*Jac kson*

15° Rotation

### Script Letter Styles

*Athletic Brush Legacy Metro Rewind Stadium*

### Layouts

*Jackson*

Straight

*Jackson*

Arch

*Jackson*

15° Rotation

### Tails



\*Words cut out of tail — 6-15 characters depending on size ordered.

†Tail words available in name drop (not available in SimStitch™).

Not all styles are available in all material options.

# ANY WORD. ANY WAY.™

## Block Letter Styles

### Colors



1-color



2-color



3-color

### Background Connect



Non-Connected



Connected

### Background Style



Regular



Detailed



Cloud

### Split Front



Overlap Split Front



Split Between Letters

### Block Letter Styles

**Billboard**

**Deco**

**Highway**

**Metal**

**Rodeo**

**TIFFANY\***

**Chalkboard**

**Elementary**

**Holiday**

**Odyssey**

**Square Peg**

**Typewriter**

**Coffeehouse**

**Fable**

**Hoopla**

**Preschool**

**TEAM US\***

**Whiteout**

**Cooper**

**Grunge**

**Marker**

**Quasar**

**textme**

**ZOMBIE\***

### Layouts



Arc



Arch



Bookends



Bowtie



Bridge



Coaster



Double Bridge



Flare



Italic



Monogram  
3 letters ONLY



Pennant



Reverse Arch



Reverse Bookends



Reverse Bridge



Slanted



Straight



Super Hero  
2-color Varsity or  
Pro Block ONLY



Title Case



University Arch



Wave

### Tails



BT1



BT2



BT3



BT4



BT5



BT6\*\*



BT7\*



BT8



BT9



BT10



BT11



BT12\*\*



BT13\*



BT14\*\*



BT15



BT16



BT17



BT18



BT19



BT20

\*Words cut out of tail — 6–15 characters depending on size ordered (not available in SimStitch®).

\*\*Tail words available in name drop (not available in SimStitch®).

Not all styles are available in all material options.



## ANY WORD. ANY WAY.<sup>™</sup> Standard

Requires hand positioning.

Size	Acrylic Felt*, Poly-TWILL*, Thermo-FILM*				Appliqué Fabrics*, Felt*, Pressure Sensitive Poly-TWILL*, Thermo-GRIP*			
	5	10	50	100+	5	10	50	100+
Small	1.58	1.06	.92	.84	2.37	1.58	1.37	1.28
Medium	2.01	1.34	1.15	1.08	3.02	2.01	1.74	1.62
Standard	2.29	1.52	1.33	1.25	3.43	2.29	1.99	1.84
Large	2.50	1.68	1.45	1.35	3.76	2.50	2.17	2.02
X-Large	2.66	1.77	1.52	1.42	3.97	2.66	2.29	2.13
XX-Large	2.91	1.96	1.69	1.57	4.38	2.91	2.52	2.36
Mega	4.27	2.85	2.47	2.29	6.42	4.27	3.70	3.44
Add Tail	.72	.52	.46	.41	1.08	.72	.67	.62
Word Cut Out of Tail*	.93	.58	.44	.43	.93	.58	.44	.43

\*Must be sewn.

Prices are per piece. 5 piece minimum. Order in multiples of 5. Quantity price breaks are per size, style, material, and color. Consider mixing media to achieve a special effect. Designs will be priced on a per-layer basis. For a list of compatible materials reference page 74 or visit [stahls.com/fabric-chart](http://stahls.com/fabric-chart).



## ANY WORD. ANY WAY.<sup>™</sup> CAD-CUT<sup>®</sup>

Arrives pre-aligned on a carrier.

Size	Fashion-FILM <sup>®</sup> , GORILLA GRIP <sup>®</sup> II, Metallic, Premium Plus <sup>®</sup> High Tack, Thermo-FILM <sup>®</sup>				Fashion-FILM <sup>®</sup> Electric, Flock II, Glitter Flake <sup>™</sup> , Glow, Hologram, Reflective II, Silicone Dye-Block <sup>™</sup> , SportFilm Lite <sup>™</sup> , Thermo-GRIP <sup>®</sup>				3M <sup>™</sup> Scotchlite <sup>™</sup> 5807, Hi-Vis Color Reflect			
	5	10	50	100+	5	10	50	100+	5	10	50	100+
X-Small	1.90	1.35	1.27	1.16	2.47	1.76	1.65	1.52	2.85	2.02	1.88	1.75
Small	2.82	1.99	1.85	1.74	3.66	2.59	2.39	2.27	4.20	2.98	2.76	2.60
Medium	3.12	2.34	2.26	2.15	4.06	3.03	2.94	2.80	4.67	3.48	3.37	3.21
Standard	3.28	2.61	2.50	2.41	4.26	3.39	3.25	3.14	4.90	3.89	3.75	3.61
Large	3.50	2.79	2.69	2.56	4.55	3.63	3.48	3.34	5.23	4.17	4.02	3.83
X-Large	3.71	2.96	2.84	2.73	4.82	3.83	3.69	3.54	5.55	4.41	4.25	4.08
XX-Large	4.26	3.46	3.39	3.25	5.54	4.51	4.41	4.23	6.38	5.18	5.07	4.87
Mega	5.16	4.28	4.25	4.09	6.71	5.58	5.53	5.31	7.71	6.41	6.36	6.12
Add Tail	1.18	.98	.93	.88	1.55	1.24	1.18	1.13	1.80	1.44	1.39	1.34
Word Cut Out of Tail*	1.23	.74	.46	.45	1.23	.74	.46	.45	1.23	.74	.46	.45

\*Not available in Extra Small.

Prices are per piece. 5 piece minimum. Order in multiples of 5. Quantity price breaks are per size, style, material, and color. Consider mixing media to achieve a special effect. Designs will be priced on a per-layer basis. For a list of compatible materials reference page 74 or visit [stahls.com/fabric-chart](http://stahls.com/fabric-chart).

**Email proof for your approval, provided upon request – \$6.00**

For more information on STAHL'S<sup>®</sup> Embroidery Express<sup>®</sup> sew files, see page 54.



## ANY WORD. ANY WAY.™ Kiss Cut® Appliqué

Available in 2 and 3-color options, our Kiss Cut® Appliqué foreground and background layers arrive pre-assembled for quick, easy positioning. Must be sewn for permanent application.

2-Color	Pressure Sensitive Poly-TWILL™ on Poly-TWILL™				Pressure Sensitive Poly-TWILL™ on Pressure Sensitive Poly-TWILL™			
	5	10	50	100+	5	10	50	100+
Size								
Small	4.67	3.12	2.70	2.50	5.65	3.78	3.27	3.05
Medium	5.70	3.80	3.29	3.06	6.91	4.60	3.99	3.72
Standard	6.23	4.16	3.58	3.34	7.51	5.02	4.33	4.03
Large	6.68	4.46	3.85	3.58	8.11	5.40	4.68	4.35
X-Large	7.07	4.71	4.08	3.79	8.56	5.72	4.94	4.60
XX-Large	7.79	5.19	4.50	4.18	9.45	6.30	5.44	5.07
Mega	10.57	7.06	6.09	5.67	12.48	8.32	7.19	6.70
Add Tail	2.27	1.55	1.34	1.24	2.78	1.85	1.60	1.49

3-Color	Pressure Sensitive Poly-TWILL™ on Pressure Sensitive Poly-TWILL™ on Poly-TWILL™				Pressure Sensitive Poly-TWILL™ on Pressure Sensitive Poly-TWILL™ on Pressure Sensitive Poly-TWILL™			
	5	10	50	100+	5	10	50	100+
Size								
Small	7.65	5.10	4.43	4.11	8.53	5.70	4.92	4.58
Medium	9.33	6.23	5.39	5.02	10.40	6.94	6.00	5.58
Standard	10.21	6.81	5.88	5.47	11.37	7.58	6.56	6.10
Large	11.21	7.48	6.46	6.02	12.48	8.33	7.20	6.70
X-Large	11.83	7.89	6.83	6.36	13.19	8.81	7.62	7.09
XX-Large	13.06	8.71	7.53	7.00	14.55	9.70	8.40	7.81
Mega	16.30	10.88	9.40	8.74	18.22	12.14	10.51	9.77
Add Tail	3.76	2.52	2.16	2.01	4.17	2.83	2.42	2.27

Prices are per piece. 5 piece minimum. Order in multiples of 5. Quantity price breaks are per size, style, material, and color.

**Email proof for your approval, provided upon request – \$6.00**

For more information on STAHL'S® Embroidery Express® sew files, see page 55.



## ANY WORD. ANY WAY.<sup>™</sup> SimStitch<sup>®</sup>

Save stitches, save time, and hoop no more. Available in 1, 2, and 3-color options, SimStitch<sup>®</sup> permanently applies with a heat press and features a unique zigzag sewn look.

Size	5	10	50+
Small	3.57	3.40	3.23
Medium	4.49	4.25	4.04
Standard	5.15	4.89	4.65
Large	5.62	5.34	5.08
X-Large	5.96	5.65	5.38
XX-Large	6.59	6.25	5.94
Mega	9.49	9.00	8.55
Add Tail	1.65	1.55	1.49

*For 2-color, double the price shown. For 3-color, triple the price shown. Prices are per piece. 5 piece minimum. Quantity price breaks are per size, style, material, and color.*



## ANY WORD. ANY WAY.<sup>™</sup> Sublimated Twill Appliqué & SimStitch<sup>®</sup>

Take school, team, or league names to the next level with digitally printed patterns on twill. Plaids, animal prints, camouflage, and more are available.



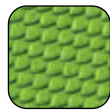
Camouflage



Leopard Skin



Tiger Stripe



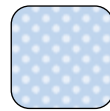
Reptilian



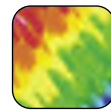
Zebra



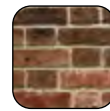
Checkers



Polka Dots



Tie-Dye



Brick Wall



Diamond Plate



Plaids

Size	Any Word. Any Way. <sup>™</sup> Sublimated Twill				Any Word. Any Way. <sup>™</sup> Sublimated SimStitch <sup>®</sup>			
	5	10	50	100+	5	10	50	100+
Small	4.50	3.23	3.01	2.80	5.78	5.58	5.03	4.67
Medium	5.73	4.13	3.84	3.56	7.36	7.11	6.40	5.95
Standard	6.53	4.71	4.38	4.07	8.39	8.11	7.29	6.78
Large	7.11	5.12	4.76	4.43	9.14	8.82	7.93	7.37
X-Large	7.56	5.45	5.07	4.71	9.72	9.38	8.45	7.85
XX-Large	8.33	6.00	5.58	5.19	10.71	10.34	9.31	8.65
Mega	12.21	8.79	8.17	7.60	15.69	15.14	13.63	12.67
Add Tail	2.42	1.75	1.60	1.49	3.09	2.99	2.68	2.52

*Prices are per piece. 5 piece minimum. Quantity price breaks are per size, material, color, style, and layout.*

**Email proof for your approval, provided upon request – \$6.00**

For more information on STAHL'S<sup>®</sup> Embroidery Express<sup>®</sup> sew files, see page 54.





# ANY WORD. ANY WAY.<sup>™</sup>

## Distressed Appliqué & Flock

### Sizes

- Small** (2" letters, width up to 9½")
- Medium** (2½" letters, width up to 11¼")
- Standard** (2¾" letters, width up to 12")
- Large** (3" letters, width up to 12¾")
- X-Large** (3½" letters, width up to 14")
- XX-Large** (4" letters, width up to 15")
- Mega** (4½" letters, width up to 17")

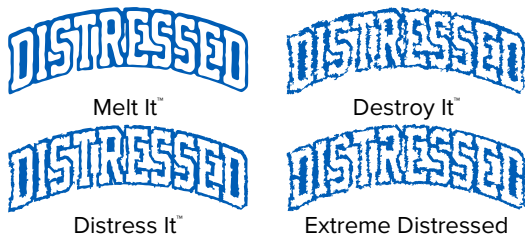
### Colors



1-color

2-color

### Distress



Melt It<sup>™</sup>

Destroy It<sup>™</sup>

Distress It<sup>™</sup>

Extreme Distressed

### Backgrounds



Non-Connected

Connected

### Layouts



Arc

Bookends

Straight

Title Case

Reverse Arch

Arch

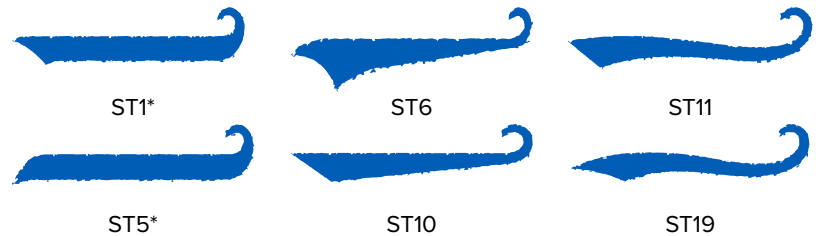
Bridge

Slanted

Italic

Reverse Bookends

### Tails



ST1\*

ST6

ST11

ST5\*

ST10

ST19

*\*Name Drops available in Brush Script, Full Block, and Fancy.*

### Fonts



*\*Available in uppercase only.*

Uncoated Chino Twill, Pressure Sensitive Chino Twill, Acrylic Felt, Pressure Sensitive Acrylic Felt, Flock II (1-color only)

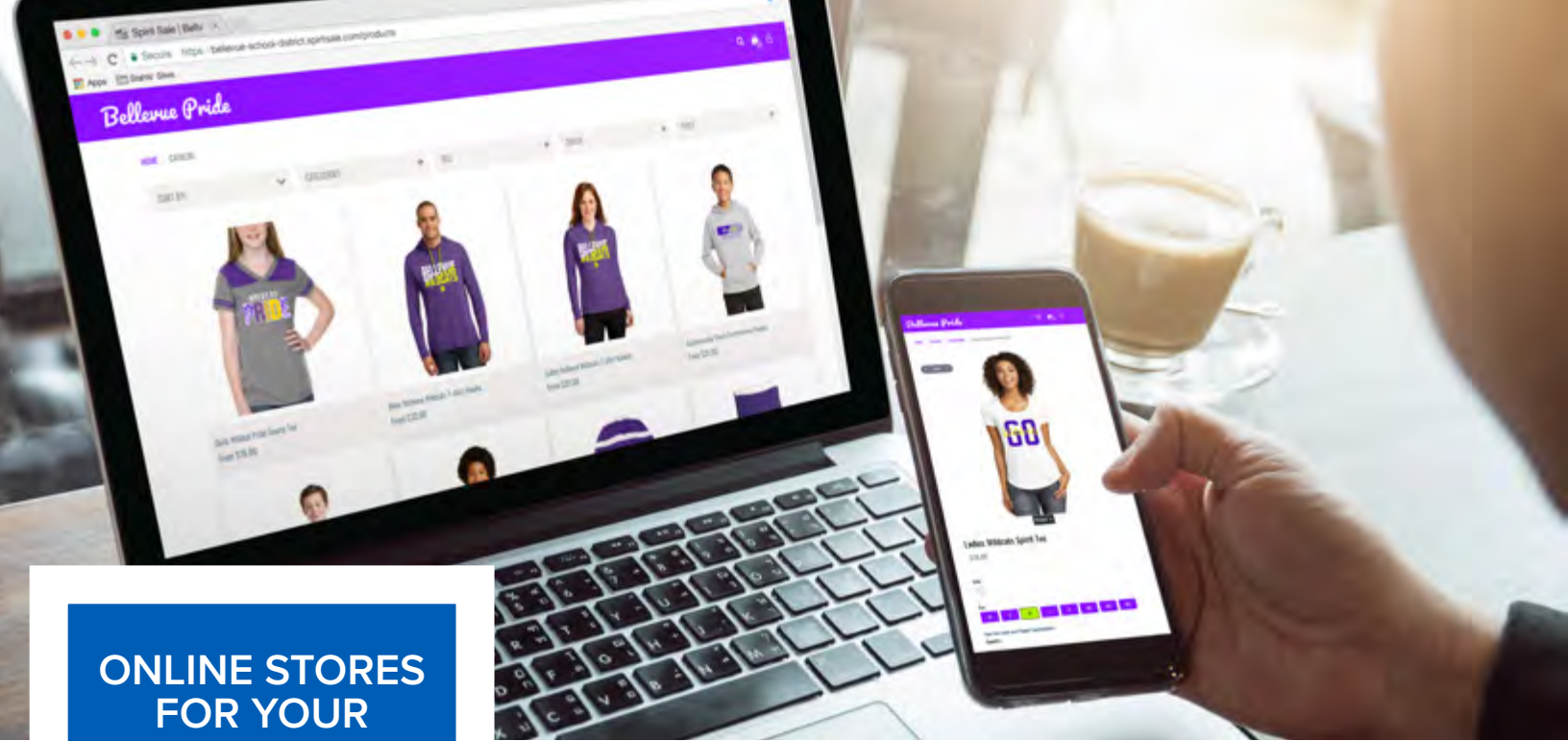
Size	1-Color*				2-Color Kiss Cut*			
	5	10	50	100+	5	10	50	100+
Small	2.38	1.60	1.39	1.31	6.34	4.78	4.37	4.20
Medium	2.98	2.00	1.74	1.64	7.66	5.69	5.18	4.96
Standard	3.41	2.28	1.99	1.86	8.61	6.37	5.77	5.54
Large	3.77	2.52	2.19	2.07	9.45	6.96	6.30	6.05
X-Large	3.96	2.66	2.32	2.17	9.93	7.32	6.64	6.37
XX-Large	4.35	2.91	2.53	2.39	10.83	7.96	7.19	6.90
Mega	6.38	4.27	3.73	3.50	14.98	10.77	9.67	9.23
Add Tail	1.08	.72	.67	.62	2.73	2.01	1.85	1.75

Prices are per piece. 5 piece minimum. Order in multiples of 5. Quantity price breaks are per size, style, material, and color. Sewing required.

\* For 2-Color, double the price shown.

**Email proof for your approval, provided upon request – \$6.00**

For more information on STAHL'S® Embroidery Express® sew files, see page 54.



ONLINE STORES  
FOR YOUR  
CUSTOMER  
**MADE  
SIMPLE**



## For **HEAT PRINTERS**, by **HEAT PRINTERS**

**STAHL'S® Spirit Sale™** is the first and only eCommerce solution created with the specific needs of the heat printer in mind. This powerful platform gives you the control, flexibility, and tools you need to sell online and profit.

### VALUABLE TOOLS YOU CAN'T AFFORD TO IGNORE

Spirit Sale beats out other eCommerce platforms with an unmatched pricing model and built-in tools designed with the heat printer in mind.

- *Simple setup with unlimited stores.*
- *Built-in tools to track every order, from sale to production to shipping.*
- *Flat annual price with no hidden fees. You drive the sales, so you keep the profits.*
- *Know where your money is. Track costs, profits, even fundraising dollars – all in one place.*

### BUILD STORES, DESIGN ITEMS, MAKE SALES

Spirit Sale equips you with the ability to build unlimited stores and fill them with the products your customer wants. Spirit Sale's integrated apparel catalog makes adding items a breeze. With 3 different designers, utilize easy-to-use templates and clip art, or upload your own artwork.

Spirit Sale keeps it simple, so you can focus on growing your business.

Just \$599 a year, no hidden fees.

TEAMS  
CAUSES  
FASHION  
BUSINESS  
FANWEAR  
SCHOOLS  
EVENTS  
DANCE  
CLOTHING  
BOUTIQUE  
BRAND  
TEAMS  
CAUSES  
FASHION  
BUSINESS  
FANWEAR  
SCHOOLS  
EVENTS  
DANCE  
CLOTHING  
BOUTIQUE  
BRAND  
TEAMS  
CAUSES  
FASHION  
BUSINESS  
FANWEAR  
SCHOOLS  
EVENTS  
DANCE  
CLOTHING  
BOUTIQUE  
BRAND  
TEAMS  
CAUSES  
FASHION  
BUSINESS  
FANWEAR  
SCHOOLS

# STORES for EVERY MARKET

With the flexibility of Spirit Sale, you can set up stores to cater to any market. From selling tees for 5K fundraisers to selling polos for local businesses, the only limits are the ones you put on yourself.

## DESIGN STORES FOR:



**YOUR CUSTOMERS**



**SIGN UP & START SELLING TODAY!**

**SPIRITSALE.COM | 800.478.2457**



▶ [stahls.com/design-services](http://stahls.com/design-services)

# CUSTOM LOGOS

## You Design It, We'll Do The Rest

With Custom Logos from STAHLs', you provide the artwork, and we adjust, print, and cut your design. You choose from high quality materials and finishes, as well as innovative decorating methods, and we'll take care of the rest.

We're continually upgrading our printing and cutting processes so your order will arrive exactly as your customer imagined it. Our low minimums on services allow you affordable solutions for every size job, every time.



### EMBLEMS

#### Add dimension to logos.

These emblems have texture, detail, and color like no other. FlexStyle® by STAHLs' are available in various unique styles with multiple finishes, and either pressure sensitive or heat application. Get the dimensional look your customer wants for any application.

**Textured** — With raised texture, intricate detail, and metallic and non-metallic finishes, this emblem is ideal for left chest logo application.

**Domed** — Available in opaque, satin, and chrome finishes, this 3D emblem is durable and thick. It's best for hats and other non-apparel applications.

**Flat** — This emblem has a slightly flatter appearance than the Domed emblem, with the same thickness, durability, and available finish options.

**Beveled** — The most durable of the product line, this emblem was designed specifically for hard goods, hats, and outerwear. The beveled edges give it a sharper, more defined look, while the finish and application options give you endless design possibilities.



### CAD-PRINTZ®

#### For full color digital logos.

Get crisp, clear, full color designs with gradients and fine detail, including photorealistic images. They can be applied to a variety of fabrics, even those that are a challenge to screen print. Get more information about our most popular CAD-PRINTZ® materials below or check out the rest at [stahls.com/digital-transfer](http://stahls.com/digital-transfer).

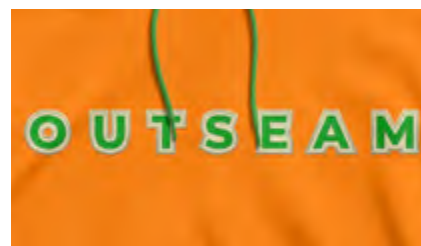
**Soft Opaque** — Thin, stretchable, and super soft. Add vivid, full colors to light or dark-colored garments.

**Express Print®** — The best choice for cotton. Thin, lightweight, matte finish.

**Glitter Flake™** — The high quality, multi-color, and finely detailed look of CAD-PRINTZ® with the glitter finish your customers love.

**Perma-TWILL®** — Get a logo laser cut in 100% polyester tackle twill with a permanent adhesive. A premium appliqué look with no sewing required.

**SuperTEK® Opaque** — Best choice for dark-colored fabrics. Superior opacity. Soft and lightweight.



### CUSTOM CUT

#### Great for 1, 2, or 3-color logos.

A variety of sew and no-sew options and a wide range of materials from CAD-CUT® Heat Transfer Vinyl to appliqué fabrics, felts or twills.

**CAD-CUT®** — Ideal for 1, 2, or 3-color detailed designs cut from the most popular CAD-CUT® materials. All you need is a heat press.

**Standard** — Create custom designs with the most popular materials on the market. An affordable option — ideal for simple designs and logos, with sew and no-sew options.

**Kiss Cut®** — Recommended for detailed 2 or 3-color twill designs and made with adhesive-backed Poly-TWILL®. Multi-piece design arrives pre-assembled, ready to sew for permanent application.

**SimStitch®** — High-end look of sewn appliqué without the cost and labor of sewing and applies with only a heat press.

**Letters & Numbers** — Upload your font and have letters and numbers cut in the material of your choice.

# CUSTOM Artwork Uploader

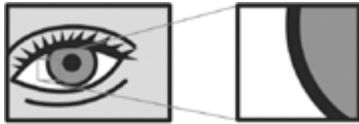
## Upload, order, and manage your artwork

The redesigned and easy-to-use Custom Artwork Uploader allows you to upload your art, select your material and finish options, get a quote and a proof, then place an order. Your art is saved on your Artwork Dashboard for easy review and reordering.

Visit [stahls.com/artworkupload](https://stahls.com/artworkupload) to get started.

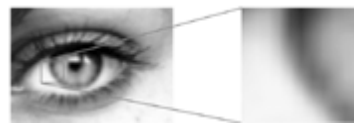


# CUSTOM Artwork Guidelines



## VECTOR ARTWORK

Vector artwork is digitally created with shapes, lines, curves, or paths that can be easily colored, manipulated, and resized without affecting the quality. Programs like CadworxLIVE.com, CorelDRAW®, and Adobe® Illustrator® are generally used to create vector artwork.



## RASTER ARTWORK

Raster artwork is digitally created using pixels. It is important to have the proper resolution in your file. Raster files should be created with a resolution of at least 150 dpi at actual size. Enlarging raster artwork is not recommended. We suggest raster artwork be created in CadworxLIVE.com, CorelDRAW®, PaintShop®, and Adobe® Photoshop®.

## ACCEPTABLE ARTWORK

### Vector



Please convert all fonts to outlines or curves before submitting artwork. Note that script fonts will also need to be welded. If color changes are needed, please provide a color from our STAHL'S® digital color palette, a PANTONE® color, or CMYK values.

### Raster



Please provide artwork with a resolution of at least 150 dpi at actual size. Avoid using images from the internet as most do not print with an acceptable level of quality. If color changes are needed, please provide a color from our STAHL'S® digital color palette, a PANTONE® color, or CMYK values.

*Please note: Due to limitations in full color printing, exact color matching is not always attainable. We recommend selecting colors from the STAHL'S® digital color palette to ensure the best color matching available. True metallic and neon colors cannot be printed with our digital process.*

### Custom Cutting



Please convert all fonts to outlines or curves before submitting artwork. Note that script fonts will also need to be welded.

*Art Fee – STAHL'S® will assess a \$20.00 raster image fee to artwork submitted in raster format. Additional art fees may apply to raster or vector art formats and are billed at \$20.00 per half hour. These fees will be communicated via the Artwork Dashboard for approval prior to proof creation. Art fees are non-refundable if you cancel your order after art fees have been approved and work has begun. Reorder of custom product will not incur art charges as long as they are exactly the same as the original order. Reorders can be placed online via the Artwork Dashboard. Art will be kept on file for 18 months from the last order.*



▶ [stahls.com/flexstyle](https://stahls.com/flexstyle)

**flex**style®  
by **STAHL'S**®

**The latest emblem technology combines high detail and texture with unlimited colors for a vibrant, premium finish.**

Elevate apparel and accessories with an endless number of design possibilities and applications. These luxury emblems have texture, detail, and color like no other.

Go beyond traditional apparel decoration with detail not possible with other decorating methods. Heat applied emblems deliver color, quality and multi-dimensional details for truly unique, stand out looks – in seconds.

800-478-2457 | Order online [stahls.com](https://stahls.com)

**S** **STAHL'S**®

# FLEXSTYLE® by STAHL'S'

Pricing applies to Textured, Domed, Flat, and Beveled for heat or pressure sensitive application.  
Minimum order quantity: 25 pieces.

QTY	Up to 1.00"	1.01" – 1.50"	1.51" – 2.00"	2.01" – 2.50"	2.51" – 3.00"	3.01" – 3.50"	3.51" – 4.00"
25 – 49	2.70	3.40	4.44	5.71	7.39	9.33	11.58
50 – 99	1.70	2.20	2.95	3.85	5.06	6.45	8.04
100 – 249	1.13	1.51	2.06	2.73	3.63	4.65	5.84
250 – 499	.96	1.31	1.84	2.50	3.36	4.35	5.50
500 – 999	.84	1.18	1.68	2.29	3.09	4.02	5.09
1,000 – 2,499	.80	1.12	1.60	2.18	2.96	3.85	4.89

*Size = Length + Width / 2*

*Prices include all finishes and heat seal pressure sensitive backing.*

FlexStyle® Art Set Up Fee	52.00
FlexStyle® Silicone Pad 5" x 6"	21.00
FlexStyle® Pre-Production Sample	25.00

**Set Up/Mold Charge:**

Up to 4.00"	—
4.01" – 6.00"	155.00

COMING IN 2020

## PREMIUM PATCHES

**NEW Leather Patches**  
Custom designs etched onto genuine leather patches.

**NEW 3D Embroidered Patches**  
Easily applied to garments, tote bags, hats, and more.



► [stahls.com/digital-transfer](http://stahls.com/digital-transfer)

## CAD-PRINTZ® Full Color Digital Logos

Gone are the days of having to screen print full color or embroider finely-detailed designs – not to mention unnecessary large runs in the name of cost efficiency. Let STAHL'S® print it for you with CAD-PRINTZ® Full Color Digital Transfers, the ideal solution for full color logos of all shapes, sizes, and quantities.

With low minimum orders, no per-color fees, unlimited colors, and a wide variety of heat transfer materials for virtually any fabric or item, CAD-PRINTZ® is the easiest way to achieve full color designs for decorating.

### MATERIAL/FABRIC RECOMMENDATIONS

**Soft Opaque**

Cotton, polyester, cotton/poly, Lycra®/spandex

**Express Print®**

Cotton, light-colored polyester, Lycra®/spandex

**SuperTEK® Gloss Clear or Matte Clear**

Cotton, polyester, Lycra®/spandex, nylon

**SuperTEK® Opaque**

Cotton, polyester, Lycra®/spandex, nylon, Cordura®

**SuperTEK® Sublistop™**

Sublimated polyester, cotton, polyester, Lycra®/spandex, nylon, Cordura®

**Perma-TWILL®**

Cotton, polyester

**Texture-TWILL™**

Cotton, polyester

**Glitter Flake™**

Cotton, polyester

**Sublimation Transfers**

White polyester

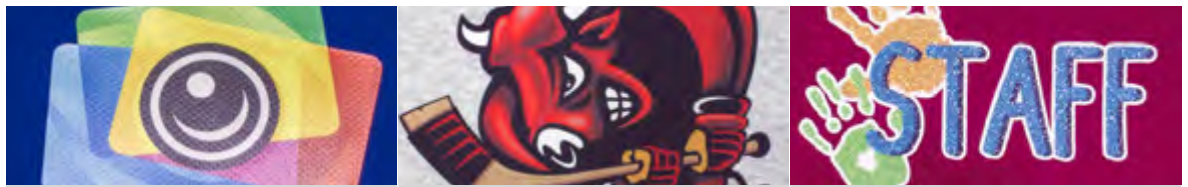
*Due to the combination of fabrics, weaves, coatings, and dyes used in the textile industry, STAHL'S® recommends and provides samples of our materials and media for testing.*





Sublimation Transfers      Express Print®      Soft Opaque, SuperTEK® Gloss Clear, SuperTEK® Matte Clear, SuperTEK® Opaque

Size (per sq. in.)	Sublimation Transfers					Express Print®					Soft Opaque, SuperTEK® Gloss Clear, SuperTEK® Matte Clear, SuperTEK® Opaque				
	1-24	25+	75+	250+	500+	1-24	25+	75+	250+	500+	1-24	25+	75+	250+	500+
Less than 20"	.12	.11	.08	.07	.06	.14	.13	.10	.09	.08	.15	.14	.11	.10	.09
20" to 64"	.08	.06	.05	.04	.04	.10	.08	.07	.06	.05	.11	.09	.08	.07	.06
65" or more	.07	.05	.04	.03	.03	.09	.07	.06	.05	.04	.10	.08	.07	.06	.05



SuperTEK® Sublistop™      Perma-TWILL®, Texture-TWILL®      Glitter Flake™

Size (per sq. in.)	SuperTEK® Sublistop™					Perma-TWILL®, Texture-TWILL®					Glitter Flake™				
	1-24	25+	75+	250+	500+	1-24	25+	75+	250+	500+	1-24	25+	75+	250+	500+
Less than 20"	.16	.15	.12	.11	.10	.22	.20	.17	.15	.14	.29	.26	.23	.20	.19
20" to 64"	.12	.10	.09	.08	.07	.14	.12	.11	.10	.10	.19	.16	.15	.13	.13
65" or more	.11	.09	.08	.07	.06	.13	.11	.10	.09	.09	.17	.15	.13	.12	.12

For information on preparing your artwork, please see page 43.

Quantity price breaks are per size and material. Pricing is based on usable artwork. Art modifications over 20 minutes, but less than one hour, will have an art charge of **\$20 per logo**. Should extensive modifications to the art be required, an art charge will be quoted. **\$25 minimum** on all orders. Because CAD-PRINTZ® Full Color Digital Logos are printed and cut especially for you, we cannot accept returns. We reserve the right to refuse to produce any design considered to be in poor taste or offensive.

## CALCULATE THE PRICE OF YOUR CAD-PRINTZ® FULL COLOR DIGITAL TRANSFER

To calculate the price, determine the area of the design (height x width) in inches. Round up to the next whole square inch when pricing (ex. 3.25 x 5.75 = 18.6875 square inch, price as 19 square inch).

Use the table above to determine per piece pricing based on surface area, quantity, and CAD-PRINTZ® product.



Embroidery Express® Sew Files		
<b>Perimeter Stitch</b>	Continuous border stitch around the transfer	24.75
<b>Detailed Stitch</b>	Perimeter stitch with additional embroidery accented within the design and/or name drop	46.50

For more information on STAHL'S® Embroidery Express® sew files, see page 54.

# CAD-PRINTZ® Non-Apparel



## Helmet Number Stickers

**011112223456789**

Chopper

**011112223456789**

Galaxy

**011112223456789**

Highlight

**011112223456789**

Home Run

**011112223456789**

Pro Block

**011112223456789**

Pro Outline

**011112223456789**

Team US

**011112223456789**

Tiffany

**011112223456789**

Varsity

Each pack includes four 1¾" number sets

6.75

1, 2, or 3-color (can be printed with any color background).



## Helmet Stickers

Size	1-24	25+	75+	250+	500+
Per square inch 20" or less	.15	.12	.10	.08	.07
Per square inch over 20"	.14	.11	.09	.07	.06

All helmet stickers/decals feature a scratch-resistant laminate. \$25 minimum order per design.



## Custom Stickers/Decals

Easy to use and apply — can last for several years. They feature a semi-permanent adhesive for exterior windows and surfaces. Durable blackout vinyl. Water-resistant and able to withstand tough weather conditions. Window decals can be cut into any custom shape or design.

Size	1-24	25+	75+	250+	500+
Per square inch 20" or less	.13	.10	.08	.07	.05
Per square inch over 20"	.12	.09	.07	.06	.04

\$25 minimum order per design.



## Wall Graphics

Digitally printed on a durable adhesive fabric, CAD-PRINTZ® Wall Graphics can be applied quickly and easily to almost any smooth, clean, dry surface. Removable and reusable.

<b>Custom Designs</b> — per square inch 144" or less	.07
<b>Custom Designs</b> — per square inch over 144"	.05

\$25 minimum order per design.



## Static Clings

This no-hassle application method can be applied to virtually all windows and polished surfaces from either side. Create full color logos or designs for windows, doors, and even mirrors. Static adhesion allows window graphics to be easily placed and removed. Choose white or clear.

Size	1-24	25+	75+	250+	500+
Per square inch 20" or less	.11	.08	.07	.06	.05
Per square inch over 20"	.10	.07	.06	.05	.04

\$25 minimum order per design.



## Banners

Banners are digitally printed on a durable 13 oz. vinyl material for indoor or short-term outdoor use. Available in custom sizes up to 4' x 8'. Each banner comes with four Banner Ups® PowerTabs® adhesive grommet tabs for easy finishing.

Size	Luster Finish	Economy Glossy Finish
Per square foot less than 10'	3.15	2.65
Per square foot 10' to 19'	2.90	2.40
Per square foot 20' and over	2.65	2.15

Not intended for long-term outdoor use.

## Grommet Service

Size	Corners	Perimeter	Top Only
2' x 2'	5.25	—	5.25
3' x 2'	5.25	—	5.25
4' x 2'	5.25	6.25	5.25
2' x 4'	5.25	6.25	5.25
3' x 4'	5.25	6.25	5.25

Size	Corners	Perimeter	Top Only
4' x 4'	5.25	6.25	5.25
2' x 6'	5.25	8.25	5.25
3' x 6'	5.25	8.25	5.25
4' x 6'	5.25	8.25	5.25
2' x 8'	5.25	10.25	5.25

Size	Corners	Perimeter	Top Only
3' x 8'	5.25	10.25	5.25
4' x 8'	5.25	10.25	5.25
2' x 10'	5.25	12.50	5.25
3' x 10'	5.25	12.50	5.25
4' x 10'	5.25	12.50	5.25



▶ [stahls.com/custom-logo](http://stahls.com/custom-logo)

# CUSTOM CAD-CUT®

Upload your artwork at [stahls.com/artworkupload](http://stahls.com/artworkupload).

Each color of your custom CAD-CUT® order arrives pre-aligned on a carrier — position the individual colors and heat apply. Perfect positioning and reduced production time make custom CAD-CUT® designs a great value when working with detailed designs or lettering.

## BEST FOR TEAM UNIFORMS:

- Thermo-FILM®
- Thermo-GRIP®

## BEST FOR PERFORMANCE WEAR:

- Premium Plus™

## BEST FOR T-SHIRTS:

- Fashion-FILM®

## BEST FOR SPECIAL EFFECTS:

- Glitter Flake™
- Metallic
- Flock II
- Glow
- Hologram

CAD-CUT® Heat Transfer Vinyl												
	Adhesive, Fashion-FILM®, GORILLA GRIP® II, Metallic, Premium Plus® High Tack, Thermo-FILM®				Fashion-FILM® Electric, Flock II, Glitter Flake®, Glow, Hologram, Reflective II, Silicone Dye-Block®, SportFilm Lite®, Thermo-GRIP®				3M® Scotchlite™ 5807, Hi-Vis Color Reflect			
Sq In	5	10	50	100	5	10	50	100	5	10	50	100
6"	2.04	1.48	1.33	1.21	2.66	1.93	1.73	1.58	3.06	2.21	1.99	1.81
10"	2.41	1.74	1.55	1.42	3.13	2.26	2.02	1.84	3.59	2.60	2.32	2.13
15"	2.66	1.92	1.73	1.58	3.44	2.49	2.25	2.06	3.97	2.86	2.59	2.37
20"	3.03	2.18	1.94	1.80	3.92	2.84	2.51	2.36	4.51	3.27	2.89	2.70
25"	3.16	2.42	2.22	2.10	4.11	3.14	2.89	2.74	4.73	3.61	3.33	3.15
30"	3.34	2.56	2.37	2.24	4.35	3.33	3.08	2.90	5.00	3.83	3.53	3.34
35"	3.51	2.86	2.63	2.50	4.57	3.73	3.42	3.27	5.25	4.27	3.93	3.75
40"	3.76	3.07	2.82	2.67	4.88	3.99	3.66	3.47	5.61	4.58	4.21	3.98
45"	3.93	3.20	2.95	2.81	5.11	4.17	3.84	3.65	5.88	4.81	4.41	4.20
50"	3.98	3.24	2.98	2.83	5.17	4.21	3.87	3.68	5.95	4.85	4.47	4.23
55"	4.31	3.59	3.34	3.20	5.60	4.68	4.35	4.17	6.45	5.38	5.00	4.81
60"	4.57	3.81	3.55	3.39	5.94	4.95	4.62	4.40	6.83	5.70	5.31	5.06
70"	5.21	4.35	4.03	3.87	6.77	5.64	5.25	5.04	7.80	6.49	6.03	5.79
80"	5.53	4.71	4.47	4.24	7.18	6.13	5.80	5.52	8.26	7.05	6.67	6.36
90"	6.07	5.16	4.91	4.67	7.89	6.71	6.39	6.07	9.08	7.71	7.34	6.97
100"	6.29	5.36	5.10	4.84	8.19	6.96	6.63	6.28	9.41	8.01	7.63	7.22
120"	7.11	6.05	5.75	5.44	9.23	7.86	7.48	7.09	10.63	9.05	8.59	8.15
150"	7.97	6.77	6.45	6.11	10.36	8.81	8.39	7.96	11.91	10.12	9.64	9.15

Multi-Colour Designs			
Layer	6 to 20 Sq In	25 to 50 Sq In	55 + Sq In
Color Two	1.00	2.00	3.00
Color Three	1.00	2.00	3.00

Prices are per piece. 5 piece minimum. Order in multiples of 5. Quantity price breaks are per size, style, material, and color. Consider mixing media to achieve a special effect. Art fee applies. Designs over 150 square inches, please fax or upload your design at [stahls.com/artworkupload](http://stahls.com/artworkupload) for a quote.

For a list of compatible materials, reference page 74 or visit [stahls.com/fabric-chart](http://stahls.com/fabric-chart).

# CUSTOM Kiss Cut®

Upload your artwork at [stahls.com/artworkupload](http://stahls.com/artworkupload).

Recommended cutting method for detailed 2 or 3-color Poly-TWILL™ designs. Multi-layer designs come pre-assembled, ready to sew.

2-Color Sq In	Pressure Sensitive Poly-TWILL™ on Poly-TWILL™				Pressure Sensitive Poly-TWILL™ on Pressure Sensitive Poly-TWILL™			
	5	10	50	100	5	10	50	100
6"	2.66	1.77	1.52	1.42	3.21	2.14	1.84	1.73
10"	3.53	2.36	2.04	1.90	4.28	2.85	2.47	2.29
15"	4.24	2.83	2.44	2.27	5.15	3.43	2.96	2.76
20"	4.52	3.03	2.61	2.43	5.49	3.65	3.16	2.94
25"	5.36	3.57	3.09	2.87	6.08	4.33	3.75	3.49
30"	6.07	4.04	3.50	3.25	6.87	4.68	4.08	3.85
35"	6.62	4.36	3.83	3.68	7.65	5.04	4.41	4.22
40"	7.10	4.68	4.10	3.93	8.21	5.41	4.71	4.52
45"	7.30	4.86	4.24	4.06	8.47	5.61	4.90	4.69
50"	7.83	5.22	4.57	4.39	9.12	6.05	5.28	5.07
55"	7.89	5.40	4.70	4.53	9.20	6.26	5.42	5.24
60"	8.25	5.62	4.97	4.84	9.57	6.51	5.76	5.58
70"	9.05	6.17	5.42	5.22	10.50	7.16	6.28	6.06
80"	10.09	6.88	6.04	5.81	11.76	8.01	7.02	6.76
90"	10.89	7.42	6.51	6.32	12.70	8.65	7.58	7.37
100"	11.27	7.89	6.93	6.73	13.13	9.20	8.06	7.84

Prices are per piece. 5 piece minimum. Order in multiples of 5. Quantity price breaks are per size, style, material, and color.

3-Color Sq In	Pressure Sensitive Poly-TWILL™ on Pressure Sensitive Poly-TWILL™ on Poly-TWILL™				Pressure Sensitive Poly-TWILL™ on Pressure Sensitive Poly-TWILL™ on Pressure Sensitive Poly-TWILL™			
	5	10	50	100	5	10	50	100
6"	4.35	2.89	2.50	2.33	4.85	3.23	2.80	2.60
10"	5.79	3.86	3.34	3.11	6.46	4.31	3.73	3.47
15"	6.95	4.64	4.01	3.74	7.76	5.17	4.47	4.16
20"	7.42	4.94	4.27	3.98	8.26	5.52	4.76	4.44
25"	8.23	5.50	4.74	4.41	9.18	6.11	5.29	4.92
30"	9.59	6.33	5.57	5.34	9.61	6.42	5.55	5.16
35"	10.12	6.67	5.87	5.63	10.79	7.15	6.23	5.88
40"	10.85	7.16	6.28	6.03	11.97	7.89	6.91	6.62
45"	11.15	7.43	6.50	6.25	12.32	8.19	7.16	6.86
50"	11.97	7.99	6.98	6.72	13.24	8.82	7.70	7.40
55"	12.07	8.26	7.19	6.95	13.38	9.13	7.92	7.65
60"	12.62	8.61	7.61	7.40	13.93	9.51	8.39	8.15
70"	13.81	9.43	8.29	8.00	15.27	10.41	9.16	8.84
80"	15.41	10.53	9.22	8.89	17.08	11.64	10.22	9.84
90"	16.61	11.34	9.95	9.65	18.43	12.57	11.01	10.70
100"	17.20	12.06	10.59	10.27	19.08	13.37	11.72	11.38

Prices are per piece. 5 piece minimum. Order in multiples of 5. Quantity price breaks are per size, style, material, and color. Art fee applies, see page 43. Designs over 100 square inches, please fax or upload your design at [stahls.com/artworkupload](http://stahls.com/artworkupload) for a quote.

Sew Files Available	<b>Embroidery Express® Sew Disk or CD</b>	
	Custom Design	Starting at 46.50

# CUSTOM Standard

Upload your artwork at [stahls.com/artworkupload](https://stahls.com/artworkupload).

Priced according to square inch dimensions. Perfect for simple designs. Requires hand positioning.

Sq In	Acrylic Felt*, Poly-TWILL*, Thermo-FILM*				Appliqué Fabrics*, Wool Felt*, Pressure Sensitive Poly-TWILL*, Thermo-GRIP*			
	5	10	50	100	5	10	50	100
6"	.96	.64	.55	.50	1.34	.90	.76	.71
10"	1.13	.75	.66	.62	1.60	1.06	.93	.85
15"	1.31	.87	.74	.70	1.82	1.21	1.05	.98
20"	1.60	1.06	.92	.84	2.22	1.48	1.29	1.18
25"	1.83	1.23	1.06	.98	2.58	1.72	1.48	1.38
30"	2.14	1.42	1.25	1.14	2.99	2.00	1.73	1.61
35"	2.26	1.50	1.31	1.21	3.16	2.10	1.81	1.70
40"	2.44	1.63	1.40	1.31	3.42	2.27	1.98	1.82
45"	2.52	1.69	1.46	1.35	3.53	2.36	2.04	1.90
50"	2.77	1.84	1.61	1.49	3.88	2.59	2.24	2.08
55"	2.86	1.91	1.65	1.53	4.00	2.67	2.31	2.15
60"	2.88	1.99	1.72	1.60	4.04	2.77	2.41	2.22
70"	3.11	2.20	1.91	1.77	4.36	3.09	2.68	2.48
80"	3.53	2.50	2.17	2.02	4.94	3.51	3.04	2.82
90"	3.83	2.72	2.36	2.18	5.37	3.81	3.29	3.07
100"	4.10	2.90	2.51	2.35	5.74	4.06	3.52	3.28
120"	4.53	3.21	2.79	2.59	6.36	4.51	3.90	3.62
150"	5.21	3.70	3.19	2.97	7.30	5.18	4.48	4.17

\*Must be sewn.

Prices are per piece. 5 piece minimum. Order in multiples of 5. Quantity price breaks are per size, style, material, and color. Consider mixing media to achieve a special effect. Designs will be priced on a per-layer basis. Please visit [stahls.com](https://stahls.com) or consult your Customer Service Representative for a list of compatible materials. Art fee applies, see page 43. Designs over 150 square inches, please fax or upload your design at [stahls.com/artworkupload](https://stahls.com/artworkupload) for a quote.

Sew Files Available	<b>Embroidery Express® Sew Disk or CD</b>	
	Custom Design	Starting at 46.50



Multiple piece & less stable designs arrive pre-aligned on a mask for easy placement and application

► [stahls.com/custom-simstitch](https://stahls.com/custom-simstitch)

## CUSTOM SimStitch®

Upload your artwork at [stahls.com/artworkupload](https://stahls.com/artworkupload).

Available in 18 Perma-TWILL® colors.

Sq In	5	10	50	100
6"	2.51	1.97	1.80	1.69
10"	3.22	2.55	2.37	2.24
15"	3.85	3.12	2.93	2.78
20"	4.64	3.80	3.55	3.42
25"	5.18	4.44	4.24	4.12
30"	5.76	4.99	4.79	4.66
35"	6.34	5.70	5.46	5.34
40"	6.97	6.28	6.04	5.88
45"	7.56	6.83	6.58	6.44
50"	7.70	6.97	6.71	6.56
55"	8.12	7.41	7.15	7.01
60"	8.71	7.94	7.69	7.52
70"	10.04	9.19	8.87	8.71
80"	11.05	10.24	9.99	9.77
90"	12.29	11.37	11.12	10.89
100"	13.19	12.27	12.01	11.74
120"	15.40	14.34	14.04	13.73
150"	18.33	17.13	16.82	16.48

Prices are per piece. 5 piece minimum. Order in multiples of 5. Quantity price breaks are per size, style, material, and color. For 2-color, double price shown. For 3-color, triple price shown.



# EMBROIDERY EXPRESS® Sew Files

Embroidery Express® Sew Files are a perfect finish for your custom or Any Word. Any Way.™ designs.

## EASY AS:

1. Order appliqué cut goods
2. Choose a stitch style and format needed
3. Specify hoop size and appliqué stop position
4. Choose drop embroidery font and positioning
5. Sew it!

## FEATURES & OPTIONS

### Elimination of Unnecessary Stitches

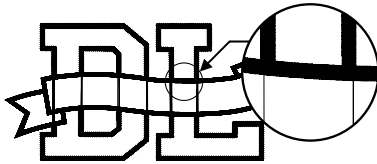
This exclusive feature eliminates the background stitches where appliqué pieces overlap for a smooth finish.

### Precision Stitching

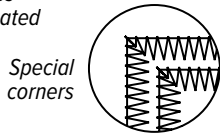
Stitching is calculated to overlap the appliqué design perfectly, no fraying or ragged edges.

### Special Corners

Mitered corners for ease of sewing and a great finished look.



Unnecessary stitches eliminated



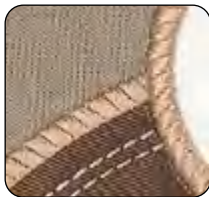
Special corners

## Stitch Styles

Create interesting appliqué designs by using combinations of different stitch styles and thread colors.



Diamond



Rope



Satin



Bean

Available with Acrylic Felt, Felt, and Chino Twill only.



Vintage



Zigzag

## Name Drop

Our Art Department can add an embroidered word or words to complement your appliqué design.

### Styles Available:

*Brush*

**COOPER BLACK**

**DENMARK**

*Fancy*

**PLAIN BLOCK**

**CENTURY**

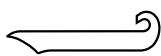
**COPPER PLATE**

**EURO**

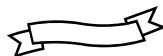
**FULL BLOCK**

**PUMP MEDIUM**

### Placement Options:



Inside a tail



Inside a bar or banner



Diagonally spaced over the design



Centered, over or under a design



Flush left or right, over or under a design

## Appliqué Sew Out Sample Kits Available

Visit [stahls.com](http://stahls.com) for more information





Professional results every time

## EMBROIDERY EXPRESS® Sew Files, *continued*

Any Word. Any Way.™	
<b>Standard</b> — Available in Satin, Zigzag, Diamond, Rope, Vintage, Bean, and Combo (Zigzag/Satin or Satin/Zigzag). File will match cut pieces ordered — same size, style, and number of colors. Minimum 5 pc. appliqué order required.	24.75
<b>Split Front</b> — Available in Satin, Zigzag, Diamond, Rope, Vintage, Bean, and Combo (Zigzag/Satin or Satin/Zigzag). File will match cut pieces ordered — same size, style, and number of colors. Minimum 5 pc. appliqué order required.	37.25
<b>Name Drop</b>	10.50
<b>Distressed Appliqué</b> — Available in Zigzag or Bean. Background stitch optional for 2-color. File will match cut pieces ordered — same size and style. Minimum 5 pc. appliqué order required.	37.25
<b>3D Mega Greek</b> — Available in Satin (ledge style) or Zigzag. Limit 1 stitch type. Contains entire alphabet.	24.75
<b>Custom Letter or Number*</b> — Available in Satin or Zigzag. Limit 1 stitch type. File will match cut pieces ordered — same size, style, and number of colors. Minimum 5 pc. appliqué order required.	37.25
Auto-Stitch	
<b>Letter or Number</b> — Available in Satin or Zigzag. Limit 1 stitch type. File will match cut pieces ordered — same size, style, and number of colors. Minimum 5 pc. appliqué order required.	24.75
<b>Number Sequence</b> — Available in Satin or Zigzag. Limit 1 stitch type. File will match cut pieces ordered — same size, style, and number of colors. Minimum 5 pc. appliqué order required.	133.00
Embroidery File Appliqué Logo	
Perimeter Sew	24.75
Detailed Sew	46.50

\*Visit [stahls.com](http://stahls.com) or call your Customer Service Representative for product ordering information. STAHL'S® Embroidery Express® Sew Files are available in Melco® (.exp) and Tajima (.dst).



## TWILLSTITCHPRO PLUS®

TwillStitchPro PLUS® lets you bring in vector art and easily generate stitches to create custom appliqué sew files. Plus, create a team roster of names and numbers faster than ever.

- Step 1:** Load your artwork.
- Step 2:** Select the outline and convert to TwillStitch.
- Step 3:** Save it as a stitch file. It's that easy.

### Includes the Font PLUS! Library:

- Over 150 direct embroidered fonts
- 14 pre-digitized fonts in various sizes
- 13 appliqué shapes in various sizes
- Includes more than 40 appliqué stitch styles

TwillStitchPro PLUS®	514.00
----------------------	--------

# NEW BLANK APPAREL



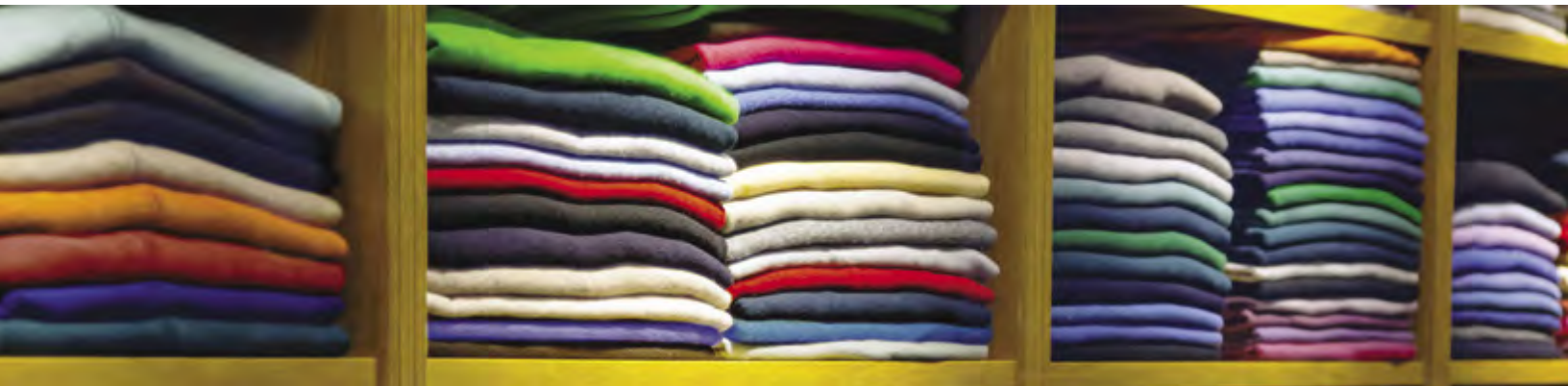
## ORDER WHOLESALE APPAREL WITH YOUR HEAT TRANSFER MATERIALS ALL AT ONE TIME.

*No minimums, low wholesale prices, and large brand selection!*

### **BUY MORE, SAVE MORE**

with tiered pricing & free shipping on orders over \$300.

[stahls.com/blankapparel](http://stahls.com/blankapparel) | 800.4.STAHL5





▶ [stahls.com/heat-press](http://stahls.com/heat-press)

# EQUIPMENT & ACCESSORIES

## HOTRONIX® Heat Presses

### It All Starts with a Heat Press

Proudly made in the USA and born from the specific requirements of heat transfer technology, Hotronix® has been taking the guesswork out of heat application since the 1980s. Now stronger and more advanced than ever, Hotronix® continues to engineer the world's best-selling heat presses and accessories. Don't accept imitations — **Look for The Blue™**.

Heat presses come in many makes, models, sizes and styles. Let us help you decide which is right for your business.

### HEAT PRESS & VINYL CUTTER PACKAGES

*Save Big on the Equipment You Need*

Get big savings with STAHL'S equipment packages. STAHL'S bundles together the equipment you need to succeed. A variety of heat press and vinyl cutter packages are available for every experience level.

#### HEAT PRESS PACKAGES

From the MAXX® Clam to the Hotronix® Dual Air Fusion®, STAHL'S sells heat press packages with the equipment you need for your business. Whether you're just starting out or have been in the business for decades, these packages are an incredible value. Don't pass up these savings.

▶ Visit [bit.ly/heat-press-packages](http://bit.ly/heat-press-packages) to learn about these great heat press packages.

#### VINYL CUTTER PACKAGES

When you're looking to buy a vinyl cutter, look no further than the vinyl cutter packages offered through STAHL'S. These packages combine high-quality vinyl cutters with the accessories and materials you need to get started.

▶ Visit [bit.ly/vinyl-cutter-packages](http://bit.ly/vinyl-cutter-packages) to see how STAHL'S vinyl cutter packages can save you hundreds.

#### STAHL'S EQUIPMENT FINANCING

Grow your business without hurting your bottom line. STAHL'S Equipment Financing helps you get the equipment you need, when you need it.

▶ Apply now at [bit.ly/stahls-equipment-financing](http://bit.ly/stahls-equipment-financing)

# HOTRONIX® Fusion IQ®

The Hotronix® Fusion IQ® isn't just the best heat press on the market, it's now the smartest. The Fusion IQ® line of presses is designed to make your business smarter. Insights into job and operator performance can help you make proactive, data-driven changes in real time. Available in several models, find the right fit for your business.



## DUAL AIR Fusion IQ®

### Productivity Optimized

Built for ultimate heat printing efficiency, the Dual Air Fusion IQ® provides the functionality of two presses with dual 16" x 20" workstations. Program the press to preheat on station A and complete final application on station B. The press automatically adjusts time and pressure as it shuttles between workstations. It's a smooth, quiet, effortless operation controlled by the push of a button and tap of the foot pedal. Simply power on and choose between dual or independent operation.

The Dual Air Fusion IQ® also comes standard with a Laser Alignment System, assuring your job is on target every time. The laser system seamlessly integrates into the Dual Air Fusion IQ® workstations and is controlled entirely through the touch screen.

220 volt • 20 amps / 3500 watts

Shipping Weight & Dimensions: 410 lbs. • 45"L x 45"W x 30"H

Dual Air Fusion IQ® with two 16" x 20" Platens	7,300.00
--	----------

*Requires air compressor (not included) with minimum 1 horsepower and 5-gallon holding tank. Uses 3.8 CFM.*



## AIR Fusion IQ®

### Air-Powered For Effortless Operation

The Air Fusion IQ® offers a two-button operation which locks the upper platen down, applying accurate, even pressure, then automatically swings open to create a heat-free workspace.

Patented Auto Adjust Pressure™ automatically adjusts to the thickness of the item you're printing. Program your time to change from pre-heating to final application. With up to four time and pressure settings, it's not just possible – it's automatic.

110 volt • 20 amps / 1800 watts | 220 volt • 10 amps / 3500 watts

Shipping Weight & Dimensions: 245 lbs. • 48"L x 40"W x 58"H

Air Fusion IQ® 16" x 20"	4,400.00
--------------------------	----------

*Requires air compressor (not included) with minimum ½ horsepower and 2.5-gallon holding tank. Uses 2.3 CFM.*



## TABLE TOP AIR Fusion IQ®

### Space-Saving Table Top Design

Take everything you love about our Fusion IQ®, add the power of an air compressor, the compact size of a table top, and you have the Table Top Air Fusion IQ®. With an upper platen that operates with the touch of a button, operator fatigue is a thing of the past.

110 volt • 20 amps / 1800 watts | 220 volt • 10 amps / 3500 watts

Shipping Weight & Dimensions: 154 lbs. • 37"L x 24"W x 27"H

Table Top Air Fusion IQ® 16" x 20"	4,000.00
------------------------------------	----------

*Requires air compressor (not included) with minimum 1/2 horsepower and 2.5-gallon holding tank. Uses 2.3 CFM.*



## FUSION IQ®

### #1 Selling Heat Press Worldwide

In the decorating business, it's all about customization. And that's what we had in mind when we made the Fusion IQ®. Switch between the draw and swing motion depending on workspace, user preference, or garment. The Touch Screen Technology allows you to program an unlimited number of presets. Add the compatibility of 7 optional Quick Change Platens, and you'll be decorating more than ever.

110 volt • 20 amps / 1800 watts | 220 volt • 10 amps / 3500 watts

Shipping Weight & Dimensions: 150 lbs. • 37"L x 25"W x 24"H

Hotronix® Fusion IQ® 16" x 20"	2,250.00
--------------------------------	----------

# HOTRONIX® Auto Open Clam

The Auto Open Clam is the most versatile and user-friendly heat press in the Hotronix® line. This press opens automatically to prevent over-application and scorching in even the busiest shops. The clamshell design saves shop space and a wide opening between upper and lower platen allows for easy layout. Digital time, temperature, and pressure readouts ensure a quality press every time.



## 11" x 15"

The 11" x 15" Auto Open Clam is perfect for shops with limited space. This lightweight, compact design is also a great choice for heat printing at offsite events.

110 volt • 10 amps / 1000 watts | 220 volt • 10 amps / 1000 watts  
**Shipping Weight & Dimensions:** 72 lbs. • 36"L x 25"W x 21"H

11" x 15"	1,000.00
-----------	----------



## 16" x 16"

The 16" x 16" Auto Open Clam is a popular choice and favored by many shops that print full-size transfers.

110 volt • 20 amps / 1800 watts | 220 volt • 10 amps / 1800 watts  
**Shipping Weight & Dimensions:** 90 lbs. • 36"L x 25"W x 21"H

16" x 16"	1,400.00
-----------	----------



## 16" x 20"

This full-size clam's large surface accommodates the application of names and numbers on jerseys, all-over sublimation prints, and oversized transfers. Compatible with nearly every optional Quick Change Platen, it's also the most versatile.

Order the Auto Open Clam as a Hover Press™, which is designed for curing inks during the DTG decorating process. Switch from Hover mode to Auto Open as needed.

110 volt • 20 amps / 1800 watts | 220 volt • 10 amps / 1800 watts  
**Shipping Weight & Dimensions:** 100 lbs. • 36"L x 25"W x 21"H

16" x 20"	1,675.00
Auto Open Hover Press™	1,800.00



## 6" x 6"

If you're heat printing small items or limited areas of apparel, here's the perfect press. Lightweight and portable, it's ideal for small decorating jobs in the craft market, or other mobile heat printing opportunities.

110 volt • 10 amps / 360 watts | 220 volt • 10 amps / 360 watts  
**Shipping Weight & Dimensions:** 41 lbs. • 26"L x 15"W x 21"H

6" x 6"	900.00
---------	--------



**New** **360 IQ® Hat Press**

**The Only Hat Press You Need**

Successfully print on all sides of a hat without removing it from the press. The one-size-fits-all molded platen eliminates crease lines, and a heated lower platen makes it the perfect solution for applying emblems, appliqué, and patches. Best of all, it comes equipped with advanced IQ® technology allowing you to track your business in real time.

**Shipping Weight & Dimensions:** 50 lbs. • 26"L x 15"W x 24"H

360 IQ® Hat Press	1,295.00
-------------------	----------



**SPORTS BALL Press**

Customize and personalize a variety of different inflatable sports balls, including footballs, volleyballs, basketballs, and soccer balls. Perfect for player names, numbers, team logos, school names, and more, you can easily heat print one-color and full color transfers on balls to commemorate special events, use as a promotional giveaway, or for a personalized trophy.

110 volt • 3 amps / 360 watts | 220 volt • 3 amps / 360 watts

**Shipping Weight & Dimensions:** 45 lbs. • 25"L x 14"W x 25"H

Sports Ball Heat Press	1,050.00
------------------------	----------



**PORTABLE Air Compressor**

For use with Hotronix® Air Fusion IQ®, 70 Decibel, CFM/2.5, 6.6 Gal.

Portable Air Compressor	700.00
-------------------------	--------

**STAHL'S® Hotronix® Premier Warranty**

- Lifetime on heating element
- 5-year on framework
- 2-year on circuit board
- 1-year parts and labor
- Free lifetime technical support



Proudly Made in the USA

# MAXX® Heat Presses

## The Perfect Partner for the Start-Up Business

The MAXX® is the best-selling low-cost heat press. Trust these budget-friendly machines to outperform every press in their class. Whether you're just getting into heat printing, heat printing part-time, or need a back-up press, these durable machines are the perfect partner.



### 16" x 20"

110 volt • 20 amps / 1800 watts | 220 volt • 10 amps / 1800 watts

Shipping Weight & Dimensions: 104 lbs. • 36"L x 25"W x 21"H

16" x 20"	1,250.00
-----------	----------



### 15" x 15"

110 volt • 20 amps / 1800 watts | 220 volt • 10 amps / 1800 watts

Shipping Weight & Dimensions: 78 lbs. • 36"L x 25"W x 21"H

15" x 15"	1,000.00
-----------	----------



### 11" x 15"

110 volt • 20 amps / 1000 watts | 220 volt • 10 amps / 1000 watts

Shipping Weight & Dimensions: 72 lbs. • 36"L x 25"W x 21"H

11" x 15"	750.00
-----------	--------



### CAP

110 volt • 20 amps / 500 watts | 220 volt • 10 amps / 500 watts

Shipping Weight & Dimensions: 41 lbs. • 26"L x 15"W x 21"H

MAXX® Cap	750.00
-----------	--------



Proudly Made in the USA

#### STAHL'S® Hotronix® MAXX® Warranty

- Lifetime on heating element
- 1-year parts and labor
- Free lifetime technical support



▶ [stahls.com/power-platen](https://stahls.com/power-platen)

## HEAT PRESS Platens & Accessories

### HOTRONIX® Power Platen™

The Power Platen™ applies heat from the lower platen for a quicker bond between adhesive and fabric while applying less heat to the face of heat-sensitive garments. The Power Platen™ is available in 4 sizes with built-in pillows for the right fit, no matter what you're decorating.

16" × 20"	755.00
11" × 15"	555.00
6" × 20"	455.00
6" × 6"	355.00
Power Platen Controller	240.00
Power Platen Kit*	2,360.00

\*Power Platen Kit includes one digital controller and each platen.



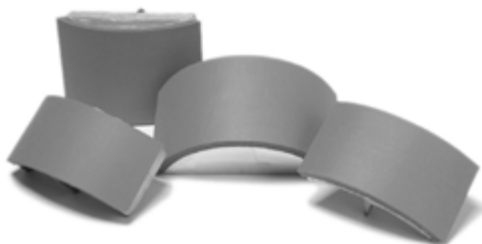




## QUICK CHANGE Platens

Use interchangeable platens to decorate a wide variety of apparel and accessories. Platens are compatible with Hotronix® and MAXX® brand presses.

4" x 4" — for small garments and accessories	100.00
7" Round — for duffle bags	125.00
8" x 10" — for tote bags	125.00
6" x 10" — for left chest & hoodie pockets	125.00
<b>Best Value</b> — Set of 3 (7" Round, 8" x 10", 6" x 10")	325.00
MVP 11" x 15" — for women and children's apparel	175.00
Shoe 6" x 15" — for athletic footwear	275.00
Fusion® Sleeve/Leg 6" x 20" — for long, slender items	275.00
Double Sleeve/Leg 16" x 20" — for long, slender items	425.00
Can Cooler — for 8 collapsible can coolers	275.00
Hat Bill — underside or top	275.00
Hotronix® Heated Lower Platen — 16" x 20"	995.00



## INTERCHANGEABLE Cap Platens

Interchangeable cap platens make decorating hats easy. Whether you have a low-profile or oversized hat, we have a platen that fits.

All Star 2¾" x 6½" — for low-profile caps	75.00
Rookie 3" x 5¾" — for low-crown caps	75.00
Slugger 4" x 6½" — for full-crown ball caps	75.00
Champ 4" x 8" — for oversized caps	75.00
<b>Best Value</b> — Set of 4 (1 each)	250.00



## PLATEN Covers

### QUICK SLIP LOWER PLATEN PROTECTOR

This fitted cover slips snugly over the bottom platen, making it easy to slide the garments on the platen, reducing wear and tear.

6" x 10"	45.00
8" x 10"	50.00
11" x 15"	40.00
15" x 15"	45.00
16" x 16"	50.00
16" x 20"	60.00

### UPPER PLATEN COVER

This fitted cover slips snugly over the upper platen, protecting it from inks, adhesives, and other residue during the heat pressing process.

16" x 20"	65.00
-----------	-------

### SILICONE UPPER PLATEN COVER

Greatly reduces heat press imprint on performance wear and other heat-sensitive fabrics, such as neoprene and Lycra®/spandex.

16" x 20"	160.00
-----------	--------

*Not recommended for high-temp applications.*



## HEAT PRESS Platens & Accessories, *continued*



### HOTRONIX® Laser Alignment System

Accurate positioning and consistent placement every time. The Heat Press Laser Alignment System by Hotronix® includes a tabletop unit with four adjustable lasers used to ensure consistent placement of designs. Compatible with any brand of heat press, this laser unit comes with the Laser Alignment Wizard®. For accurate positioning, align each laser bulb to this heavy-duty, spiral-bound template that is printed with five popular layouts.

Laser Alignment System	330.00
------------------------	--------



### HOTRONIX® Heat Press Caddie™

The Heat Press Caddie™ stand is an adjustable pedestal stand that converts any Hotronix® Auto Open or MAXX® Clam into a threadable heat press. Self-leveling casters provide portability and stability, allowing you to take advantage of mobile heat printing opportunities.

Heat Press Caddie™	375.00
Heat Press CounterCaddie®	225.00



### HOTRONIX® Heat Press Caddie™ Shelves

Designed to easily attach to your Hotronix® Heat Press Caddie™ or Air Fusion IQ® pedestal stand, these sturdy, adjustable shelves keep your heat transfer products, blanks, and accessories within reach. Each tray can be rotated in either landscape or portrait position, offering you convenience and flexibility.

Heat Press Caddie™ Shelves	160.00
----------------------------	--------



### HEAT PRINTING Equipment Cart

Add more counter space to your shop with this heavy-duty steel cart. Designed to hold the Dual Air Fusion IQ®, it can also be used with other heat presses, small vinyl cutters, printers, and more. Pivoting wheels allow for easy movement around shops or at events, and lock to ensure stability.

- Powder-coated, scratch-resistant, heavy-duty steel
- Holds up to 600 lbs
- Adjustable height, from 17" to 35"

**Actual Weight:** 122 lbs  
**Shipping Weight:** 126 lbs  
**Dimensions:** 37.6"L x 24"W x 17.3"H  
**Shipping Dimensions:** 38.2" x 24.8" x 18.11"

Heat Printing Equipment Cart	625.00
------------------------------	--------



## STAHL'S' EZ Weeding™ Table

The bond between a heat transfer material and its carrier lessens when heated. This patented table heats materials slightly to promote removal from the carrier, resulting in easier weeding with less material breakage.

- 20" x 36" weeding area – a full yard of weeding production
- Three temperature settings – 110° for finely detailed designs, up to 130° for maximum productivity on larger jobs
- Top clamp holds materials in place while weeding
- Built-in storage compartment
- Fits most production tables and counter tops

**Actual Weight:** 27 lbs

**Shipping Weight:** 28 lbs

**Dimensions:** 39"L x 27.5"W x 4"H (Closed)

**Dimensions:** 39"L x 27.5"W x 17"H (Open)

**Shipping Dimensions:** 31" x 43" x 8"

STAHL'S' EZ Weeding™ Table	625.00
----------------------------	--------



## CAD-CUT® Weeding Panel

This lightweight heated portable panel softens heat transfer vinyl adhesive to make weeding easier. Its low cost and sturdy construction make it a valuable tool for any shop.

- Space-saving 16" x 22" weeding area
- Light weight of 9 lbs allows easy portability
- Panel temperature: 130° F

CAD-CUT® Weeding Panel	75.00
------------------------	-------



## ACCESSORY Kit

Having the right tool is essential. Get the tools you need for your heat press in one convenient kit.

- 16" x 20" Heat Printing Pillow
- 3.5" x 15" Print Perfect Pad
- 18" x 20" Reusable Cover Sheet
- 15" x 19" Kraft Paper (25-Pack)
- Heat Eraser

Accessory Kit	82.00
---------------	-------



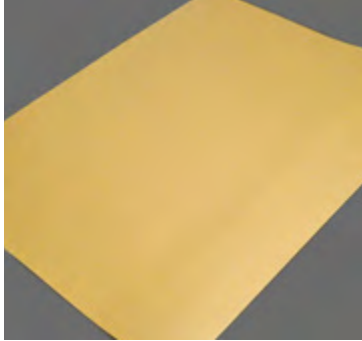
## HEAT SEAL Machine Test Kit

Check for cold spots, the #1 cause of ruined garments.

Heat Seal Machine Test Kit	17.50
----------------------------	-------

# HEAT PRINTING Accessories

## COVER SHEETS



**6 Mil Reusable Cover Sheet** – Our most popular cover sheet leaves a screen-print-like finish on Thermo-FILM®, Thermo-GRIP®, and Heat Applied Vinyl. Durable and reusable – store flat to prevent wrinkling.

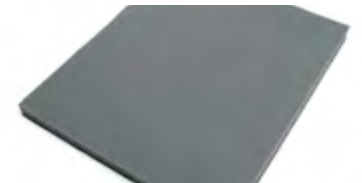
18" x 20"	10.50
<b>6 Mil Reusable Cover Sheet – by the yard</b>	
37½" x 36"	33.50
<b>Kraft Paper – Matte finish</b>	
15" x 19", 25 sheets per pack	11.00
18" x 20", 25 sheets per pack	14.00

## PILLOWS, PADS, & INSERTS



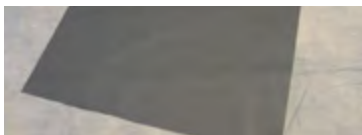
**Heat Printing Pillows** – Prevent marks on transfers and lettering with these covered ¾" foam core pillows. Use with V-necks, near heavy seams, zippers or buttons, and as inserts for mesh jerseys.

16" x 20" for oversized shirts	28.50
12" x 14" for adult shirts	19.25
10" x 10" for youth shirts	17.00
6" x 8" for shorts and shoulders	12.50
5" x 18" for sleeves and legs	16.00
<b>Best Value – Set of 5 (1 each)</b>	86.00



**Print Perfect Pads** – Designed to elevate your print area and still provide a solid surface for even pressure. Ideal for working around buttons, zippers, and seams.

5" x 6"	30.00
3½" x 15"	40.00
8" x 10"	55.00



**Flexible Application Pad** – Great for protecting buttons, zippers, and snaps on garments when heat printing. This thin silicone rubber pad can be used in place of a cover sheet when applying heat transfer materials to heat sensitive items.

18" x 22"	34.00
-----------	-------

## STORAGE BOXES



**Keep inventory organized** – corrugated cardboard storage boxes with plastic inserts.

15" x 20" – 32 sections holds ⅝", 1", 2", 3"	8.00
19" x 21" – 12 sections holds 6"	9.00
19" x 21" – 6 sections holds 8", 10"	9.00

## CRYSTAL VELLUM



**250 sheet pack** – This translucent vellum paper goes directly from your laser printer to the screen burning process. For use with most major-brand laser printers and copy machines.

8½" x 11"	36.75
8½" x 14"	49.50
11" x 17"	67.25
13" x 18½"	95.75
A3	67.25

## LETTERING LAYOUT GUIDE



Quickly and easily align Pre-Cut Letters and Numbers with this repositionable vinyl layout guide.

Lettering Layout Guide	14.50
Magic Mask® High Tack Strips (3.6" x 20") — 5-pack	4.25

## LAYOUT BOARDS



3-pack. Perfect for aligning names and numbers, either straight or with an arch.

Layout Boards	4.25
---------------	------

## HEAT ERASER



Ideal for cooling letters before you remove the carrier or Thermo-Tape™.

Heat Eraser	2.75
-------------	------

## EZ WEEDER™



This handy tool helps you easily weed CAD-CUT® and CAD-COLOR® graphics.

EZ Weeder™	17.75
------------	-------

## TWEEZERS



Easily remove excess material from CAD-CUT®, CAD-COLOR®, and pressure sensitive graphics.

Tweezers	22.25
----------	-------

## THERMO-TAPE™



Heat-resistant tape holds lettering in place before and during pressing.

	1-5	6+
Thermo-Tape™ — 3/8" x 72 yd roll	8.75	8.00

## TAPE DISPENSER



Slip-resistant with rubber base to provide sturdiness while using Thermo-Tape™. Double core for 1" or 3" tape.

Tape Dispenser	17.00
----------------	-------

## PRE-MASK TAPE



The solution for lettering caps and working with small lettering or sign vinyl; reusable.

3 1/4" x 100 yd roll	21.75
24" x 100 yd roll	88.75

## LITE-TACK SPRAY



Clear adhesive spray ends layout frustration. Will not gum up embroidery needles. Use in a well-ventilated area. For safety reasons, ground shipping only. Additional charges apply. Material Safety Data Sheet (MSDS) included.

Lite-Tack Spray — 13 oz. can	12.25
------------------------------	-------

## ALBACHEM LETTER REMOVING SOLVENT



Erase mistakes the easy way with AlbaChem VLR Vinyl Letter Removing Solvent. It removes heat transfer lettering from most fabrics when used within 48 hours of application. Removes lettering cut from Thermo-FILM®, Fashion-FILM®, Glitter Flake™, Poly-TWILL™, and more.

Letter Removing Solvent — 20 oz. can	18.50
--------------------------------------	-------

## MINI T-SHIRTS



These miniature T-shirts are the perfect way to creatively promote your business. Use them to create memorable business cards and customer samples.

Black or White — Pack of 10	14.50
-----------------------------	-------



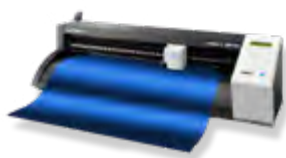
▶ [stahls.com/vinyl-cutter](http://stahls.com/vinyl-cutter)

▶ [stahls.com/print-cut](http://stahls.com/print-cut)

## Vinyl Cutters & Print/Cut Systems

Vinyl cutters purchased through STAHL'S® include access to exclusive software via CadworxLIVE.com & VectorCUT®.

Print/cut systems are perfect for creating a wide variety of full color items — from heat transfer designs, decals and labels, to vehicle graphics and signs. Providing printing and contour-cutting capabilities in one device, printer/cutters streamline the production process with improved accuracy, and eliminate the need to reload and reposition printed materials.



### ROLAND® GS-24

#### VINYL CUTTER

Software included: CadworxLIVE\*\*, VectorCut\*\*, CutStudio™

Roland® GS-24 Vinyl Cutter – Stand included	1,895.00
---	----------

\* STAHL'S® exclusive software



### GRAPHTEC CE6000 Plus

#### VINYL CUTTER

Software included: CadworxLIVE\*\*, VectorCut\*\*, Graphtec Studio, Cutting Master 3

Graphtec CE6000 Plus – Stand included	1,795.00
---------------------------------------	----------

\* STAHL'S® exclusive software



### ROLAND® VersaCamm® VSi Series

#### PRINT/CUT SYSTEM

The VSi series brings together Roland's most popular print/cut features, such as integrated contour cutting and eco-solvent inks, to create one versatile, dependable machine.

A redesigned eight-channel Piezo inkjet print head and variable droplet size help create vibrant images with incredible detail.

VS-300i – 30" printer/cutter includes stand	Call for pricing
---	------------------



### ROLAND® TrueVIS™

**New**

#### PRINT/CUT SYSTEM

Produce everything from wall graphics to backlit displays to heat transfer graphics with outstanding versatility. The TrueVis VG2-540 is a multipurpose print/cut machine with endless capabilities.

Roland TrueVIS SG2-300 printer/cutter	Call for pricing
Roland TrueVIS VG2 Series 54" printer/cutter	Call for pricing
Roland TrueVIS VG2 Series 64" printer/cutter	Call for pricing

# Vinyl Cutter & Print/Cut Accessories

## CUTTER BLADES & ACCESSORIES

Blades for Roland® & GCC Cutters	1 Blade	5-Pack
STAHL'S 45° Dura-Blade	18.99	69.99
STAHL'S 45° Premium Carbide Blade	32.99	149.99
STAHL'S 60° Dura-Blade	21.99	79.99
STAHL'S 60° Premium Carbide Blade	32.99	149.99
STAHL'S 45° Economy Blade	–	25.00
STAHL'S 60° Economy Blade	–	25.00
STAHL'S Flock Dura-Blade	21.99	79.99
STAHL'S Twill Dura-Blade	18.99	69.99
Blades for Graphtec CE6000 Cutters	2-Pack	5-Pack
Graphtec Blade 0.9 mm 45°	77.50	173.00
Graphtec Blade 1.5 mm 45°	99.50	230.50
Blade Holders		
Roland® Blade Holder	89.99	
GCC Blade Holder	100.00	
Graphtec Blade Holder (for CB09UB Blades/Blue Tip)	105.00	
Graphtec Blade Holder (for CB15 Blades/Red Tip)	105.00	
Cutter Strips		
Roland® CM24/PC60/CX24/GX24	15.00	
GCC Cutter Strip	18.00	
Roland® Cutter Protection Strip GS-24	15.00	
Roland® Cutter Protection Strip BN-20	9.85	
Graphtec Cutting Strip for CE6000-60 (2 Pk)	39.00	
Roland® 54" Cutter Protection Strip	18.20	

## ROLAND® INKS & CLEANING CARTRIDGES

Offering a wide selection of colors, fast drying time, and exceptional durability, even outdoors, Eco-Sol MAX® inks are the most popular eco-solvent inks in the industry.

Roland® Eco-Sol Max®	220ml	440ml	500ml
Eco-Sol Max® Ink Black	72.99	134.99	–
Eco-Sol Max® Ink Cyan	72.99	134.99	–
Eco-Sol Max® Ink Light Cyan	72.99	134.99	–
Eco-Sol Max® Ink Light Magenta	72.99	134.99	–
Eco-Sol Max® Ink Magenta	72.99	134.99	–
Eco-Sol Max® Ink Yellow	72.99	134.99	–
Eco-Sol Max® Ink Metallic Silver	229.99	–	–
Roland® Eco-Sol Max® 2	220ml	440ml	500ml
Eco-Sol Max® 2 Ink Black	–	134.99	–
Eco-Sol Max® 2 Ink Cyan	–	134.99	–
Eco-Sol Max® 2 Ink Light Cyan	–	134.99	–
Eco-Sol Max® 2 Ink Light Black	–	134.99	–
Eco-Sol Max® 2 Ink Light Magenta	–	134.99	–
Eco-Sol Max® 2 Ink Magenta	–	134.99	–
Eco-Sol Max® 2 Ink Yellow	–	134.99	–
Eco-Sol Max® 2 Ink Metallic Silver	239.99	–	–
Eco-Sol Max® 2 Ink White	104.99	–	–
Roland® TrueVIS™ TR2	500ml		
TrueVIS™ TR2 Ink Black	114.99		
TrueVIS™ TR2 Ink Cyan	114.99		
TrueVIS™ TR2 Ink Light Cyan	114.99		
TrueVIS™ TR2 Ink Light Black	114.99		
TrueVIS™ TR2 Ink Light Magenta	114.99		
TrueVIS™ TR2 Ink Magenta	114.99		
TrueVIS™ TR2 Ink Yellow	114.99		
TrueVIS™ TR2 Ink White (250ml)	74.99		
Roland® Cleaning Cartridges			
Eco-Sol Max® 2 Cleaning Cartridge	52.99		
TrueVIS™ TR2 Cleaning Cartridge	57.99		

# GroupeSTAHL® Divisions



*Transfer Express® has been manufacturing and providing T-shirt decorators with screen printed transfers since 1978.*

With the Easy View® Designer, multiple finishes for almost any fabric, and customer service unmatched in the industry, Transfer Express is the only source you need for screen printed transfers.

▶ [transferexpress.com](http://transferexpress.com)



*Transfer Paper Experts is a leading domestic and worldwide designer, manufacturer, and distributor of a wide range of technically demanding coated transfer papers.*

Utilizing efficient, high-quality mills around the globe and maintaining several distribution warehouses, we're able to provide the industry with high-performance transfer papers at competitive prices. From hobbyists to business owners alike, find the perfect paper for your next project, no matter the size.

▶ [transferpaperexperts.com](http://transferpaperexperts.com)



*CadworxLIVE® is a powerful online design tool to help you create artwork for your garment decorating business.*

It's free for STAHL'S® customers and easy to learn. With royalty free clip art, an extensive text effects library and built-in Vectorizer – this powerful tool is what you need to start designing today.

▶ [cadworxlive.com](http://cadworxlive.com)



## GREAT DANE GRAPHICS

*Great Dane Graphics provides unmatched education and training tools for artists of every level.*

Reach your true artist potential and start cranking out killer graphics. Our training library is stocked with the best approaches for editing and creating designs, go-to techniques for printing optimal artwork, and a lineup of training books to help fill your toolkit with essentials for any job.

▶ [greatdanegraphics.com](http://greatdanegraphics.com)



# APPLICATION Instructions



	STAHL'S® MATERIAL	TIME	TEMPERATURE (°F)	PRESSURE	PEEL
CAD-CUT® Heat Transfer Vinyl	3M® Scotchlite® 5807	10–20 seconds	325–350°	Firm	Cold
	Chalkboard	15 seconds	275°	Medium	Warm
	Chroma Bling	10 seconds	300°	Medium	Warm
	ECONOPRINT®	12–15 seconds	330°	Light	Warm
	Fashion-FILM®	15 seconds	320°	Medium	Hot
	Flock II	18 seconds	330°	Medium	Cold
	Glitter Flake™	10–12 seconds	290–302°	Medium	Hot
	Glow	10–15 seconds	305°	Medium	Warm
	GORILLA GRIP® II	2 sec, peel COLD, cover & seal 10 sec	320°	Light	Cold
	Heat Press Adhesive	3–5 seconds	300°	Light	Hot
	Heat Transfer Foil	8–10 seconds	300°	Firm	Cold
	Hi-Vis Color Reflect	20 seconds	325–350°	Medium	Cold
	Hologram	10–15 seconds	320°	Firm	Cold
	Metallic	8–10 seconds	285°	Medium	Cold
	Premium Plus™ High Tack	8–12 seconds	280–300°	Medium	Hot
	Premium Plus™ Low Tack	8–12 seconds	280–300°	Medium	Warm Or Cold
	Pressure Sensitive Poly-TWILL™	10 seconds, must be sewn	330°	Medium	—
	Reflective II	10–12 seconds	290–302°	Medium	Hot
	Silicone Dye-Block™	10–15 seconds	290–302°	Medium	Cold
	SportFilm Lite™	10–12 seconds	302°	Medium	Warm
Thermo-FILM®	6–8 seconds	330°	Medium	Hot	
Thermo-GRIP®	6–8 seconds	330°	Medium	Warm	
Twill, Appliqué Fabrics, & More	Acrylic Felt	20 seconds	330°	Firm	—
	Appliqué Fabrics	10–15 seconds, must be sewn	330°	Medium	—
	Felt Fabric	20 seconds	330°	Firm	—
	Glitter Flake™	10–12 seconds	290–302°	Medium	Hot
	Perma-TWILL®	20 seconds	350°	Medium	—
	Poly-TWILL™	10 seconds, must be sewn	330°	Medium	—
	Pressure Sensitive Poly-TWILL™	10 seconds, must be sewn	330°	Medium	—
	Thermo-FILM®	6–8 seconds	330°	Medium	—
	Thermo-GRIP®	6–8 seconds	330°	Medium	—
	Uncoated Poly-TWILL™	5 sec, remove paper, clover & seal 15 sec	350°	Medium	—
Vinyl	3–5 sec, remove paper, cover & seal 15 sec	350°	Medium/Firm	—	
CAD-COLOR®	Express Print®	15–20 seconds	300°	Medium	Warm
	Glitter	12 seconds	302°	Medium	Hot
	Soft Opaque	15 seconds	310°	Medium	Hot
	SuperTEK® Gloss Clear	5 sec, peel COLD, cover & seal 5 sec	280–300°	Medium	Cold
	SuperTEK® Matte Clear	5 sec, peel COLD, cover & seal 5 sec	280–300°	Medium	Cold
	SuperTEK® Opaque	5 sec, peel WARM, cover & seal 5 sec	280–300°	Medium	Warm
	SuperTEK® Sublistop™	5 sec, peel WARM, cover & seal 5 sec	280–300°	Medium	Warm
	Glitter Flake™	10–12 seconds	290–302°	Medium	Hot
CAD-PRINTZ®	Perma-TWILL®	20 seconds	300°	Medium	—
	Sublimation Transfers	60 seconds	395°	Medium	Hot
	Texture-TWILL™	20 seconds	300°	Medium	—

# COLOR Charts

	CAD-CUT® 3M® Scotchlite® 5807	CAD-CUT® ECONOPRINT®	CAD-CUT® GORILLA GRIP® II	CAD-CUT® Reflective II	CAD-CUT® Thermo-FILM®	CAD-CUT® Thermo-GRIP®	Felt Fabric	Perma-TWILL®	Poly-TWILL®	Pressure Sensitive Poly-TWILL®	Thermo-FILM®	Thermo-GRIP®	Vinyl – Heat Applied
White		White	White		White	White	White	White	White*	White	White	White	White
Black		Black	Black		Black	Black	Black	Black	Black*	Black	Black	Black	Black
Charcoal					Cool Gray 11 C						Cool Gray 11 C		
Gray		Cool Gray 7 U			7539 C	7539 C	415 U	7538 C	15-4101 TPG*	7538 C	7539 C	7539 C	
Steel Gray									429 U				
Eagle Gray									429 C				
Silver	428 U			16-3915 TPG									
Maize		109 C			115 U		7408 C		7406 C*	7406 C	115 U		
Gold		1235 C	136 C		137 C	137 C	123 U	715 C	1375 C*	715 C	137 C	137 C	116 U
Bright Yellow									P 4-8 C				
Raven Gold									612 U				
Old Gold					1395 C		7511 C		7557 C	7557 C	1395 C		126 C
Texas Orange					7586 C				7586 C		7586 C		
Tan									465 U				
Cream							7499 C		5875 U*	5875 U			
Vegas Gold		616 C	7502 U		10124 C			4515 C	4515 C	4515 C	10124 C		
Light Gold									116 U	116 U			
Canyon Gold									7569 C				
Tenn. Orange									152 C	152 C			
Orange		179 C			172 C	172 C	7597 C	7597 C	7597 C*	7597 C	172 C	172 C	
Safety Orange									Orange 021 M				
Red		200 C	200 C		186 C	186 C	201 C	201 C	201 C*	201 C	186 C	186 C	200 C
Hero Red					18-1763 TPG						18-1763 TPG		
Devil Red								187 C	187 C	187 C			
Co. Burgundy									1955 C				
49er Burgundy									7427 C				
Cardinal					201 C		188 C	195 C	195 C*	195 C	201 C		
Greek Pink									Process Magenta				
Hot Pink			806 C						191 C				
Pink					203 C			5025 C	5025 C	5025 C	203 C		
Lilac									7439 U				
Light Maroon									7645 C				
Maroon		7645 C			7645 C	7645 C	Black 5 C	7645 C	7645 C*	7645 C	7645 C	7645 C	7449 C
Brown					Black 4 C		4675 C		412 C	412 C	Black 4 C		412 U
Purple		2766 C			7671 C	7671 C	669 C	7680 C	7680 C*	7680 C	7671 C	7671 C	
Milwaukee Purple									2755 C				
Columbia		7682 C			7682 C		7459 U	7462 U	7462 U*	7462 U	7682 C		
Cyan									640 U				
Mid Blue									2945 U				
Avalanche Blue									295M				
Hero Blue					18-4244 TPG						18-4244 TPG		
Royal		295 M	294 M		7686 C	7686 C	280 C	294 C	294 C*	294 C	7686 C	7686 C	654 C
Dark Royal								5265 C	5265 C	5265 C			
Thrasher Blue									2965 C				
Deep Royal									2965 C				
Navy		296 C	2965 C		5395 M	5395 M	276 C	532 C	532 C*	532 C	5395 M	5395 M	5395 C
Midnight Navy									289 C				
Jaguar Blue									5473 C				
Turquoise									3155 U				
Teal		3145 U											
Shark Teal					7717 C				7474 C	7474 C	7717 C		
Jade									7721 C				
Lime Green									802 C				
Kelly		3415 C	341 C		349 C		7733 C	7733 C	7733 C*	7733 C	349 C		3415 C
Dallas Green									3425 U				
Dark Green		553 C			553 C	19-5917 TPG	447 C	567 C	567 C*	567 C	553 C	19-5917 TPG	553 C
Midnight Green									3165 U				
Neon Yellow									809 C				
Neon Orange									811 C				
Metallic Gold			7407 U										
Metallic Silver			877 C		Silver C 10077						Silver C 10077		

Note: Closest Pantone® equivalent shown. Due to printing limitations, colors shown and Pantone® numbers suggested may vary from actual colors. For the truest color representation, request our material swatches. Colors and availability subject to change without notice.

\* Uncoated available without an adhesive backing.

### CAD-CUT® Premium Plus™

White 11-0601 TPG	Gray 16-3850 TPG	Black 19-4004 TPG	Maize 7404 C	Gold 7409 C	Old Gold 17-0949 TPG	Orange 16-1361 TPG
Texas Orange 7566 C	Red 18-1550 TPG	Burgundy 505 C	Maroon 19-1627 TPG	Pink 13-2802 TPG	Medium Pink 507 C	Fuchsia 7425 C
Purple 2090 C	Carolina Blue 278 U	Columbia 16-4032 TPG	Cyan 17-4247 TPG	Royal 2146 C	University Blue 540 U	Navy 19-3921 TPG
Bahama Blue 631 C	Teal 17-5029 TPG	Apple Green 16-6339 TPG	Kelly 7733 C	Dark Green 19-6050 TPG	Camel 4665 U	Medium Brown 476 C
Brown 412 C	Neon Yellow 930 C	Neon Orange 804 C	Neon Pink 812 C	Neon Blue 801 U	Neon Green 802 C	Metallic Silver Silver C
Metallic Gold 16-1133 TPG						

### CAD-CUT® Fashion-FILM®

Matte White Pantone White	Matte Gray 422 U	Matte Charcoal 430 C	Matte Black Pantone Black	Matte Pastel Yellow 9020 U	Matte Maize 3945 U	Matte Yellow 115 U
Matte Athletic Gold 137 C	Matte Orange Orange 021 C	Matte Texas Orange 7586 C	Matte Light Coral 16-1543 TPG	Matte Coral 17-1635 TCX	Matte Bright Red 1795 C	Matte Red 200 C
Matte Cardinal 201 C	Matte Burgundy 222 C	Matte Maroon 5185 C	Matte Light Pink 13-2802 TCX	Matte Medium Pink 204 C	Matte Pink 214 U	Matte Lilac 15-3620 TCX
Matte Amethyst 2086 U	Matte Purple 2665 C	Matte Light Blue P 115-12 C	Matte Columbia 278 C	Matte Cyan Process Blue	Matte Royal 19-4037 TPG	Matte Navy 539 C
Matte Mint Blue 3242 C	Matte Bahama Blue 2197 U	Matte Teal P 121-16 U	Matte Lime 2290 C	Matte Apple Green 360 U	Matte Kelly 341 C	Matte Greenery 15-0343 TPG
Matte Dark Green 553 C	Matte Cream 12-0822 TCX	Matte Brown 7519 C	Neon Yellow 809 C	Neon Orange 804 C	Neon Punch 1787 C	Neon Pink 806 C
Neon Raspberry 906 C	Neon Blue 285 C	Neon Green 802 C	Metallic Black 19-0303 TPG	Metallic Rose 2338 U	Metallic Silver 877 U	Vegas Gold 467 C
Metallic Gold 7756 U	Electric Pearl 11-1001 TPG	Electric Opal 12-6206 TPG	Electric Charcoal 10399 C	Electric Liquid Gold 7555 U	Electric Peach 489 U	Electric Atomic Orange 1535 C
Electric Copper 167 U	Electric Firecracker Red 7623 C	Electric Cranberry 202 C	Electric Cotton Candy 5165 U	Electric Magenta 233 U	Electric Grape Ice 7678 U	Electric Purple 2627 C
Electric Jet Stream Blue 654 C	Electric Indigo 19-3830 TPG	Electric Blue Frost 8260 C	Electric Teal 17-5024 TPG	Electric Sour Apple 366 C	Electric Green 7731 C	Electric Prism 7653 U
Electric Gold Prism 7502 C						

### CAD-CUT® Silicone Dye-Block™

White 11-0601 TPG	Gray 422 C	Black 19-0303 TPG	Red 19-1763 TPG	Sky Blue 298 C	Royal 18-3949 TPG	Kelly 18-6030 TPG
----------------------	---------------	----------------------	--------------------	-------------------	----------------------	----------------------

### CAD-CUT® SportFilm Lite™

White Pantone White	Gray Cool Gray 8 U	Black Pantone Black	Maize 116 C	Athletic Gold 13-0759 TPX	Orange 173 C	Red 200 C
Maroon 5185 C	Purple 268 U	Sky Blue 298 C	Columbia 17-4123 TPX	Royal Reflex Blue U	Navy 296 C	Shark Teal 321 U
Kelly 3425 C	Dark Green 560 C	Brown 1817 M	Neon Yellow 804 C	Neon Orange 804 C	Neon Pink 812 C	Neon Blue Process Blue C
Neon Green 802 C	Metallic Silver 877 C	Vegas Gold 7501 C	Metallic Gold 125 U			

### CAD-CUT® Flock II

White Pantone White	Gray 425 U	Charcoal 533 C	Black Pantone Black	Light Yellow Yellow 012 U	Yellow 130 C	Orange Orange 021 C
Bright Red 199 C	Red 18-1657 TPG	Pink 7647 U	Magenta 18-2143 TPG	Bordeaux 19-1725 TPG	Purple 2695 C	Pale Blue 7709 C
Pacific Blue 2146 C	Royal 3591 C	Navy 534 C	Turquoise 2228 U	Lime Green 2298 U	Green 349 C	Beige 7506 U
Brown 477 C						

### CAD-CUT® Glitter Flake™

White Pantone White	Rainbow White 9340 C	Black Pantone Black	Rainbow Black	Pale Yellow 460 U	Yellow Gold 457 C	Orange 1675 C
Rose Gold	Copper 2311 C	Bronze 1815 C	Brown 19-1241 TPG	Coral 805 C	Rainbow Coral 7423 U	Red 187 C
Maroon 505 C	Lt. Pink 223 U	Medium Pink 3582 U	Pink 7433 C	Cherry 227 C	Hot Pink 228 C	Rainbow Plum 247 U
Plum 18-3230 TPG	Lavender 2587 U	Purple 2617 C	Eggplant 261 C	Periwinkle 2133 U	Columbia 542 U	Royal 542 U
Bright Royal Reflex Blue C	Navy 395 U	Aqua 801 U	Beach Blue 320 U	Mint 571 U	Jade 563 C	Green 3288 C
Lt. Green 577 U	Kelly 356 C	Dark Green 7743 C	Fluorescent Yellow 372 C	Fluorescent Orange 170 C	Fluorescent Pink 230 C	Fluorescent Purple 2572 C
Fluorescent Blue 2985 C	Fluorescent Green 358 C	Silver 421 C	Hologram Silver	Light Multi	Black/Silver 7545 U	Black/Gold 4485 C
Vintage Gold 10340 C	Gold 871 C	Hologram Gold	Confetti			

### CAD-CUT® Hologram

Black 7547 C	Orange 1595 U	Red 186 C	Pink 701 U	Purple 2602 C	Light Blue 5445 U	Blue 2738 U
Green 362 C	Silver Warm Gray 1 U	Gold 156 C				

### CAD-CUT® Hi-Vis Color Reflect

Black 2335 U	Yellow 619 U	Bronze 17-1336 TPG	Red 201 U	Pink 687 U	Purple 18-3718 TPG	Blue 2152 C
Navy 540 U	Green 19-0309 TPG					

### CAD-CUT® Metallic

Bronze 10367 C	Brown 7518 C	Red 19-1557 TPG	Rose 619 U	Hot Pink 687 U	Purple 540 U	Light Blue 2152 C
Royal 19-4150 TPG	Silver 10077 C	Gold 201 U				

### Heat Transfer Foil

Black	Bright Gold	Yellow Gold	Copper	Orange	Coral	Red
Maroon	Rose Gold	Light Rose	Pink	Amethyst	Sapphire Blue	Navy
Teal	Kiwi	Green	Bright Silver	Silver Champagne	Silver Cracked Ice	Silver Pixie Dust
Silver Waterfall	Silver Scales	Halo Rainbow Silver	Classic Rainbow	Leopard		

### CAD-CUT® Permanent Pressure Sensitive Sign Vinyl

White 11-0601 TPG	Matte White 16-3850 TPG	Gray 19-4004 TPG	Black 7404 C	Matte Black 7409 C	Canary Yellow 17-0949 TPG	Matte Yellow 16-1361 TPG
Yellow 7566 C	Athletic Gold 18-1550 TPG	Orange 505 C	Tomato Red 19-1627 TPG	Red 13-2802 TPG	Burgundy 507 C	Hot Pink 7425 C
Pink 2090 C	Lilac 278 U	Lavender 16-4032 TPG	Plum 17-4247 TPG	Purple 2146 C	Sky Blue 540 U	Olympic Blue 19-3921 TPG
Blue 17-5029 TPG	Cobalt 16-6339 TPG	Royal 7733 C	Sapphire Blue 19-6050 TPG	Light Navy 4665 U	Aqua 412 C	Lime Green 930 C
Kelly 804 C	Green 812 C	Dark Green 801 U	Forest Green 802 C	Beige Silver C	Brown 16-1133 TPG	Silver 16-1133 TPG
Gold 804 C						

# STAHL'S SERVICES Material Reference

	Pre-Cut Letters & Numbers*	SimStitch® Letters & Numbers	Pre-Spaced Text	Pre-Spaced Numbers	Pre-Spaced Vertical Text	Team Perfect® & Player Perfect®	Any Word. Any Way.™	Custom CAD-CUT®	Custom Standard	Custom Kiss Cut®	Custom SimStitch®	CAD-CUT® Templates	CAD-PRINTZ®
Arrives on Carrier	CAD-CUT® 3M™ Scotchlite™ 5807		•		•		•	•					
	CAD-CUT® ECONOPRINT®		•	•		•							
	CAD-CUT® Fashion-FILM®	•		•	•	•	•	•				•	
	CAD-CUT® Flock II			•	•	•	•	•					
	CAD-CUT® Glitter Flake™	•		•	•	•	•	•				•	
	CAD-CUT® Glow						•	•				•	
	CAD-CUT® GORILLA GRIP® II	•		•	•	•	•	•				•	
	CAD-CUT® Heat Press Adhesive							•				•	
	CAD-CUT® Metallic	•		•	•		•	•				•	
	CAD-CUT® Hi-Vis Color Reflect			•	•		•	•				•	
	CAD-CUT® Hologram	•		•	•	•	•	•				•	
	CAD-CUT® Poly-TWILL™			•									
	CAD-CUT® Premium Plus™	•		•	•	•	•	•				•	
	CAD-CUT® Reflective II	•		•	•		•	•				•	
	CAD-CUT® Silicone Dye-Block™	•		•	•		•	•					
	CAD-CUT® SportFilm Lite™	•		•	•		•	•				•	
	CAD-CUT® Thermo-FILM®			•	•	•	•	•				•	
CAD-CUT® Thermo-GRIP®			•	•	•	•	•				•		
Perma-TWILL®		•					•				•		
Arrives without Carrier	Acrylic Felt	•					•		•				
	Pressure Sensitive Acrylic Felt						•						
	Pressure Sensitive Chino Twill						•						
	Uncoated Chino Twill						•						
	Appliqué Fabrics						•		•				
	Poly-TWILL™	•					•		•	•			
	Pressure Sensitive Poly-TWILL™						•		•	•			
	Thermo-FILM®	•					•		•				
	Thermo-GRIP®	•					•		•				
	Vinyl	•											
Wool Felt	•					•		•					
Full Color Digital	Express Print®												•
	Glitter Flake™												•
	Perma-TWILL®												•
	Soft Opaque												•
	SuperTEK® Clear (Gloss or Matte)												•
	SuperTEK® Opaque												•
	SuperTEK® Sublistop™												•
	Sublimation Transfers												•
Texture-TWILL™												•	

\* Materials and sizes not available in all Pre-Cut Letter & Number styles. Go to [stahls.com/pre-cut](http://stahls.com/pre-cut) for details.

# STAHL'S SERVICES Size Reference

	Pre-Cut Letters & Numbers*	SimStitch® Letters & Numbers	Pre-Spaced Text	Pre-Spaced Numbers	Pre-Spaced Vertical Text	Team Perfect®**	Player Perfect®**	Any Word. Any Way.™
5/8"	•		•					
3/4"								
1"	•		•					
1 1/8"	•							
1 1/2"	•		•		•			
2"	•	•	•		•			
2 1/2"			•					
2 3/4"			•					
3"	•	•	•		•			
3" x 24"					•			
3 1/2"			•					
4"	•	•	•	•				
6"	•	•		•				
8"	•	•		•				
10"	•	•		•				
12"	•	•						
3/4" name — up to 3 1/2"						•		
2" name — 6"–14"						•		
2 1/2" name — 7"–14"						•		
3" name — 9"–14"						•		
2" name — 6" or 8" number							•	
2 1/2" name — 8" or 10" number							•	
3" name — 8" or 10" number							•	
Extra Small — capital height 1" width up to 6" ***								•
Small — 2" letters – width up to 9 1/2"								•
Medium — 2 1/2" letters – width up to 11 1/4"								•
Standard — 2 3/4" letters – width up to 12"								•
Large — 3" letters – width up to 12 3/4"								•
X-Large — 3 1/2" letters – width up to 14"								•
XX-Large — 4" letters – width up to 15"								•
Mega — 4 1/2" letters – width up to 17"								•

\* Materials and sizes not available in all Pre-Cut Letter & Number styles. Go to [stahls.com/pre-cut](http://stahls.com/pre-cut) for details.

\*\* Graphic selected will determine height.

\*\*\* Available in CAD-CUT™ only.

# MATERIAL/FABRIC Selection Chart

Need help deciding which heat transfer material best suits your substrate? This reference chart makes your decision easier by cross-referencing some of the most frequently used fabrics with our heat applied materials and showing you which materials are suitable for application to your fabric.

Please note: Due to the combination of fabrics, weaves, coatings, and dyes used in the textile industry, STAHL'S recommends and provides samples of our materials and media for testing.

		100% Cotton	100% Preshrunk Cotton	100% Polyester	Cotton/Poly Blends	Lyra®/Spandex Blends	Nylon	Uncoated Nylon	Sublimated Polyester	Cordura®	Leather	Neoprene
Heat Transfer Vinyl	CAD-CUT® 3M™ Scotchlite™ 5807	•	•	•	•	•	•			•		
	CAD-CUT® Heat Press Adhesive	•	•	•	•							
	CAD-CUT® Chalkboard	•	•	•	•							
	CAD-CUT® Chroma Bling	•	•	•	•							
	CAD-CUT® ECONOPRINT®	•	•	•	•	•						
	CAD-CUT® Fashion-FILM®	•	•	•	•	•						
	CAD-CUT® FLOCK II	•	•	•	•				•			
	CAD-CUT® Glitter Flake™	•	•	•	•							
	CAD-CUT® Glow*	•	•	•	•							
	CAD-CUT® GORILLA GRIP® II	•						•			•	
	CAD-CUT® Hi-Vis Color Reflect	•		•	•				•			
	CAD-CUT® Hologram	•	•	•	•							
	CAD-CUT® Metallic	•		•	•							
	CAD-CUT® Premium Plus™	•	•	•	•	•						
	CAD-CUT® PS Poly-TWILL™	•	•	•	•			•				
	CAD-CUT® Reflective II	•	•	•	•				•			
	CAD-CUT® Silicone Dye-Block™	•	•	•	•				•	•		
	CAD-CUT® SportFilm Lite™	•	•	•	•	•	•					
	CAD-CUT® Thermo-FILM®	•	•	•	•							
CAD-CUT® Thermo-GRIP®	•	•	•	•			•					
Printable Heat Transfer Materials	CAD-COLOR® Express Print®	•	•	•	•	•						
	CAD-COLOR® Glitter	•		•	•							
	CAD-COLOR® Soft Opaque	•		•	•	•						
	CAD-PRINTZ® Glitter Flake**	•	•	•	•							
	CAD-PRINTZ® Perma-TWILL®**	•	•	•	•							
	CAD-PRINTZ® Sublimation Transfers*			•								
	CAD-PRINTZ® Texture-TWILL™*	•		•								
	SuperTEK® Gloss/Matte Clear	•	•	•	•	•	•					
	SuperTEK® Opaque	•	•	•	•	•	•			•	•	•
	SuperTEK® Sublistop™	•	•	•	•	•	•			•	•	•
Twill, Appliqué Fabrics, & More	Acrylic Felt	•	•	•	•							
	Appliqué Fabrics	•	•	•	•		•					
	Felt Fabrics*	•	•	•	•							
	Glacier TWILL™	•	•	•	•		•					
	Glitter Flake™	•	•	•	•							
	Perma-TWILL®	•	•	•	•							
	Poly-TWILL™	•	•	•	•		•					
	Pressure Sensitive Poly-TWILL™	•	•	•	•		•					
	Thermo-FILM®	•	•	•	•							
	Thermo-GRIP®	•	•	•	•		•					
	Uncoated Poly-TWILL™	•	•	•	•		•					
	Heat Applied Vinyl*	•	•	•	•							

When working with tri-blends, choose heat transfer material based on the highest fiber content in the blend.

\* Material is not CPSIA compliant.



## CONTACT US

There are more ways than ever to interact with STAHL'S' customer service.



### PHONE

**Monday–Friday | 8:00 AM – 8:00 PM EST**

For the fastest response, typically within seconds, to any question or to place an order please call.

**800.4.STAHL'S (800.478.2457)**



### EMAIL

**Monday–Friday | 8:00 AM – 8:00 PM EST**

Use email to reach out with a general inquiry or to provide feedback. Response time is within 24–48 hours.

[info@stahls.com](mailto:info@stahls.com)



### WEB CHAT

**Monday–Friday | 8:00 AM – 7:00 PM EST**

Ask questions regarding the status of your order, request application instructions, or request website help\* via web chat when you don't have access to your phone. Response time is generally within a few minutes during business hours.

[stahls.com](http://stahls.com)



### TEXT MESSAGING

**Monday–Friday | 8:00 AM – 8:00 PM EST**

Ask questions, get application instructions, obtain order status, or tracking numbers\* via mobile text messaging with STAHL'S'. Response time is between 5–10 minutes and text messages received after hours will be returned the next business day.

#### GET STARTED:

Text "**STAHL'S**" to **586.371.7139** to communicate with STAHL'S' Customer Service via SMS. You will be asked to provide your name and customer number. By opting in you agree to receive text messages from STAHL'S'. Reply **STOP** at any time to stop receiving text messages.

Standard messaging and data rates apply. Your information will never be shared, further terms & privacy can be found at [stahls.com/privacy](http://stahls.com/privacy)  
\*For your privacy and data security, please do not provide credit card information via email, text message, or web chat at any time.



## TO ORDER

Order online at [stahls.com](http://stahls.com)

Phone In Your Order: 800.4.STAHL'S (800-478-2457)

**Order Dept. Hours:** M–F, 8:00 AM – 8:00 PM, EST  
*Please have your customer number, zip code, or phone number available. For quality control purposes, your call may be monitored or recorded.*

**First Time Orders:** First orders can be made with a valid credit card; a customer profile is required thereafter. Our team will help you create a customer profile. A customer profile and tax I.D. resale certificate are required to set up an account.

**Fax Your Order: 800-346-2216**  
Our 24-hour fax line is always open for taking orders. Please request a Fax Information Pack for faxing orders. Fee may apply to faxed orders. Handwritten orders are no longer accepted.

**Mail Your Order:**  
STAHL'S  
Attn: Order Department  
6353 E. 14 Mile Rd.  
Sterling Heights, MI 48312

**Orders cannot be modified once placed.** STAHL'S makes every effort to stock a variety of items, colors, and materials. In the event of a back order, you will be notified of availability, alternatives, and charges.

**Handling Fee:** There is a \$2.50 handling fee on orders under \$75. There is no handling fee on orders \$75 or greater.

## SHIPPING

**From our Quick Ship Program to the \$12 Two-Day Flat Rate shipping program** – get your products to your door fast. Learn more about all shipping methods at [stahls.com/order-shipping-tracking](http://stahls.com/order-shipping-tracking)

## PAYMENT

**Financial Services: 800-521-5210**  
Dept. Hours: M–F, 8:00 AM – 6:00 PM, EST

STAHL'S offers two payment methods:

1. Visa, MasterCard, American Express, Discover, PayPal
2. STAHL'S Net 30 Account (requires approval)

Orders will be shipped using a major credit card or payment in advance until credit has been established.

**Payment by Mail:**  
STAHL'S  
P.O. Box 72497  
Cleveland, OH 44192-2497

New customer account forms are available online at [stahls.com](http://stahls.com), or call STAHL'S Financial Services.

**Past Due Accounts/Returned Checks:** Two percent per month charged on past due accounts. Orders on past due accounts may be delayed. Accounts with returned checks are subject to a per check service charge.



## RETURNS

**Stock letters and numbers can be returned**, damage free, prepaid freight, with a **20% restocking fee**, within **30 days**. Returnable stock letters and numbers must meet the following criteria:

- 2" & 3" Pro/Varsity Letters and Numbers in Thermo-FILM® & Poly-Twill™ – White, Black, Red, Royal, Gold, and Navy
- 4", 6", 8" Pro/Varsity, Team US & Shadow Numbers in Thermo-FILM® – White, Black, Red, Royal, Gold, and Navy
- 4", 6", 8", and 10" Pro/Varsity Numbers in Poly-Twill™ and Thermo-Grip® – White, Black, Red, Royal, Gold, and Navy.
- 2", 3" Letters and Numbers for Pro/Varsity Backgrounds, 4", 6", 8", and 10" Pro/Varsity Numbers only in Thermo-FILM® and Poly-Twill™ – White and Black only
- Unopened packs, kits, or team-sets listed in the above styles and colors are all returnable

**Complete Rolls/Yardage:** Damage-free materials can be returned within **30 days** with a **20% restocking fee**.

**Custom items cannot be returned:** Custom designs and items cut to order from non-stocked colors, styles, or fabrics are non-returnable because these items have been cut specifically for you.

**Software, Cutters, and CDs cannot be returned.**

**Damage due to freight carrier:** Damaged packages should be noted as such with the carrier at time of delivery. STAHL'S must be notified immediately and product must be kept in original packaging for carrier evaluation and/or return when applicable. Our 30-day return policy will still apply. Damaged equipment should be photographed, if possible.

**Request for Return Authorization:** Requests must be made within 30 days of invoice date. In order to process your return quickly and accurately, returns can only be accepted with a Return Authorization Number (RA) issued by our Customer Service Quality Department; RA Numbers are valid for 30 days from the date issued. All returned merchandise should be in its original condition. Product or equipment returned without an RA Number will be refused and will not be processed for credit.

**Please indicate RA# on packages and send to:**  
STAHL'S  
Attn: Return Department with RA Number  
20500 Stephens  
St. Clair Shores, MI 48080-1084

## PRODUCT GUARANTEE

We guarantee to replace any item that is defective in materials and workmanship, free of charge, within 30 days of delivery. Our liability is limited to the value of STAHL'S products only. We do not reimburse for the cost of items that have STAHL'S products applied to them. There are no other warranties, express or implied, including but not limited to express or implied warranty of merchantability or fitness for a particular purpose. We cannot be held responsible for products which have been laundered with soaps containing bleach or harsh detergents with bleach or bleach particles.