



---

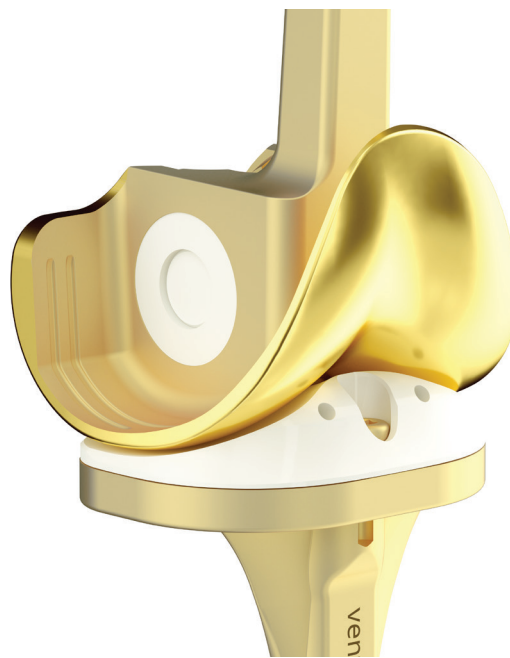
OUR GOLD STANDARD IS BACKED BY SCIENCE  
POREX SURFACE TECHNOLOGY<sup>1</sup>

---

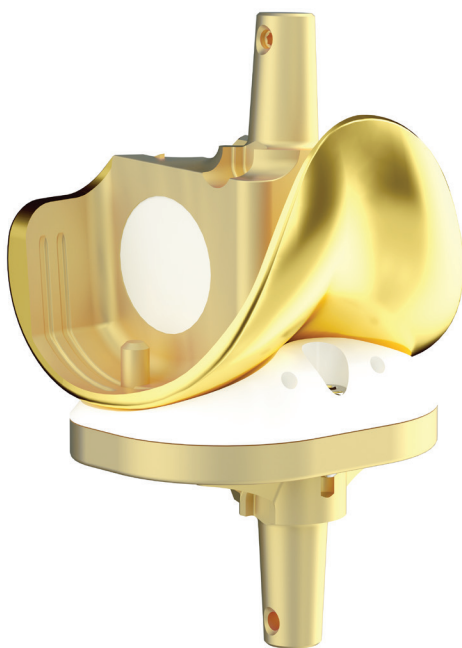
# YOUR SAFE HAVEN IN ARTHROPLASTY



Sled Uni



Endo Monoblock Rotating Hinge



Endo Modular Rotating Hinge



Gemini Primary Knee

- ~4X the surface hardness of CoCr<sup>1</sup>
- Significant reduction in release of Cr and Ni ions<sup>1</sup>



LinkBio.com

- Lower coefficient of friction compared to CoCrMo surfaces<sup>1</sup>
- ~5 micron ceramic-like surface structure<sup>1</sup>

<sup>1</sup>Internal Technical Report  
LinkBio\_Porex\_GoldAdv\_4\_25\_2020