

# SUNstyle

by **CLEARVISION**  
*optical company*

WHAT  
INSPIRES  
GREAT  
DESIGN

THIS  
YEAR'S  
TRENDS

FITTING EVERYONE  
UNDER THE SUN

2014



# WHAT INSPIRES GREAT DESIGN?



**David Milliman**

*Designer*

Great design comes from the magic of reinterpretation. To me, the process of taking inspiration & reinterpreting it into a finished design is truly magical...



**Stephanie Stafford**

*Product Developer*

It's the fact that we're creating something tangible; the process of changing & sometimes re-thinking the whole concept makes the end result so worthwhile.



**Maritza Penalo**

*Product Developer*

I love working with my customers to design exactly what they want.



**Cathy Kaye**

*Senior Brand Product Manager*

I always say that it takes three people to make one great frame. Each of us brings a different talent to the team.



**Jennifer O'Connor**

*Brand Manager*

I love turning words, images, and colors into wearable frames for our diverse brands.

**Pam Elfreich**

*Brand Manager*

People are the root of inspiration for my designs. I enjoy making frames that are an extension of their lifestyles, helping to tell their story.



**Maria Velasquez**

*Product Developer*

Our surroundings – nature, architecture, everything – inspire beautiful frame designs & that let people make a powerful statement through their eyewear.

# IF

## WE HAD OUR WAY, EVERY DAY WOULD HAVE SUNSHINE.

Ahhh...there's nothing like the sun. No matter where you are, the sun rises every day—just like our standards in the creation of a high quality, fashionable sunwear collection.

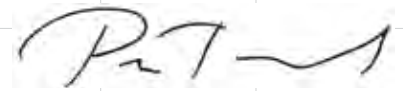
When it comes to craftsmanship, fit, and the finest materials, our 2014 Sun Collection provides value that goes above and beyond. With well over 80 styles from six of our highly recognized brands, our collection was designed to meet the needs of every dispensary.

We're here to help you do your part in keeping your patients looking good and seeing well, no matter the season. Whether they're focused on fashion, fit, or function, there's a ClearVision sun for just about everyone.

Enjoy browsing our 2014 Sun Collection.  
We look forward to working with you.



**David Friedfeld**  
President



**Peter Friedfeld**  
Executive Vice President





WHIMSY



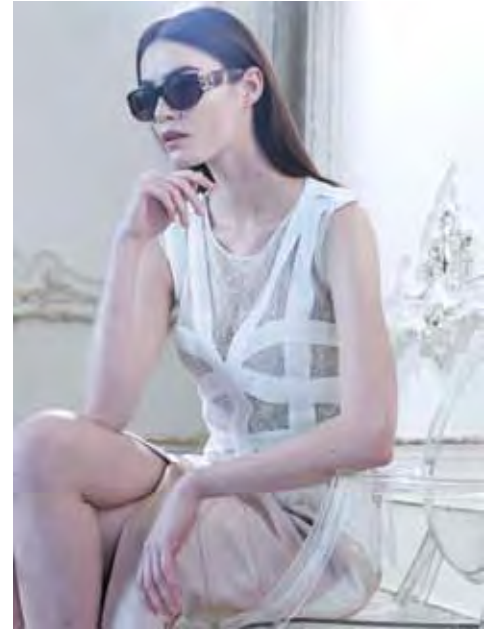
**BCBGMAXAZRIA**

SUNWEAR

# *a FRESH* PERSPECTIVE

## ON THE FOREFRONT OF FASHION

*Named for the Parisian slang term “bon chic, bon genre,” meaning “good style, good attitude,” BCBGMAXAZRIA embodies a true combination of European sophistication and American spirit. BCBGMAXAZRIA is a brand, an aesthetic and the realization of a dream. Inspired by the evolving landscape of culture, art and design, BCBGMAXAZRIA brings global style and attitude within the reach of every woman.*



From powerful **statement-makers** to classic, confident styles, the BCBGMAXAZRIA Sunwear collection reflects the **lifestyle** of the BCBG woman. Featuring **directional** silhouettes, elevated materials and a **vibrant** color palette, BCBGMAXAZRIA Sunwear provides the perfect assortment of **tailored** chic, weekend casual, and **glamorous** styles. The iconic BCBGMAXAZRIA stud-bar hardware punctuates the sun styles and further aligns the collection within the brand's portfolio of lifestyle products.

BCBGMAXAZRIA Sunwear translates this premier fashion brand's DNA into a **chic**, sleek, wearable collection that lets today's modern woman feel beautiful and **effortlessly cool**.

Product order from top to bottom: Stunning, Sunkissed, Stunning, Date Night and Lacey.



# ELLEN TRACY



## DRAMATIC ATTITUDE

Founded in 1949, Ellen Tracy originated as a blouse manufacturer and has significantly grown into a leading designer of quality apparel for professional women. The brand has three main labels: Ellen Tracy Bronze, exclusive to Macy's; Ellen Tracy Black, and Company Ellen Tracy. Today, Ellen Tracy has over 23 licensed agreements including shoes, hosiery, belts, eyewear, coats and dresses, to name a few, and is a \$350 million business at retail.



# How I like me NOW



She's **comfortable in her own skin**. The Ellen Tracy woman strives for the perfect balance between **youthful attitude** and **grown up glamour**, and the Ellen Tracy sun collection gives her what she needs to get it right. **Bold, contemporary** designs have a touch of “**notice me**” drama through animal print accents and beautiful, **jewelry-inspired** textures. **Uplifting** geometric eye shapes and **gemstone** colorations enhance the **richness** of this meticulously designed collection.









# COLE HAAN



Cole Haan is an **iconic** American brand, offering premium men's and women's footwear, bags and accessories with a deep commitment to **authentic** style, **craftsmanship** and design innovation.

Marrying craft and **innovation**, this 85-year-old brand takes its inspiration from **timeless** classics, offering **distinctive** styles that can stand up to the rigors of any city and still shine.

The Cole Haan collection elegantly fuses tradition and **modernity**. The men's sunwear features **well-crafted** shapes in plastics and crisp metals. Women's styles blend **rich materials** in unparalleled hues with a borrowed-from-the-boys profile.

Product order from top to bottom: 620, 698, 619, 624, 696, 624, 696 and 620.



# Sexy. Stealth. Covert. Cool.



Launched in 2004, the Marc Ecko Cut and Sew collection is a contemporary menswear line blending classic tailoring with bold graphics and subtle embellishments. It was designed for those who want to start dressing a little more seriously but maintain their youthful edge with just the right swagger. The line includes t-shirts, denim, hoodies, blazers, vests, suits, shirts, belts and more, all for the fashion forward man.





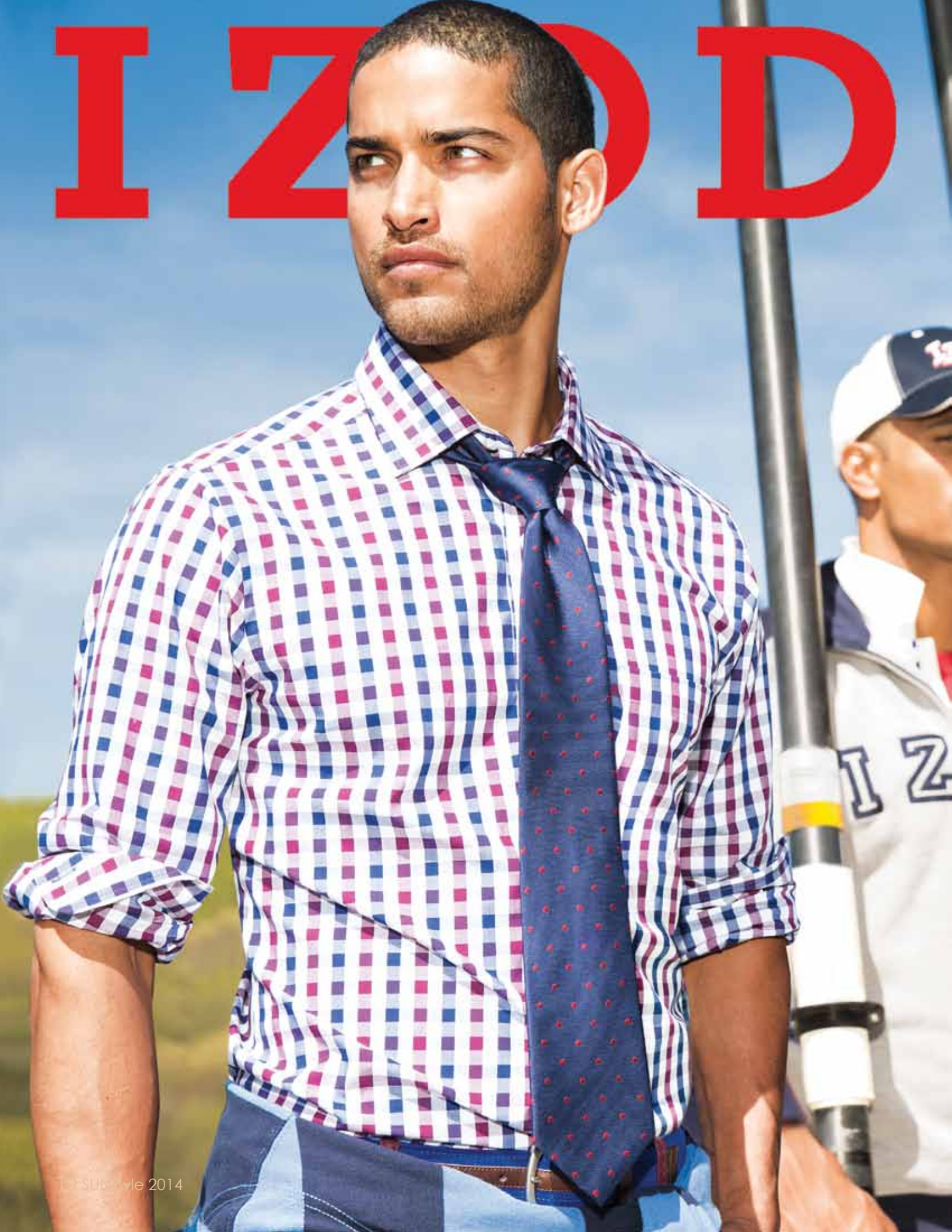
# Bring out your inner rebel.



Future minded with a wink to the past, the Marc Ecko Cut & Sew sun collection is an expression of artistic **creativity** for men who know that **authenticity** counts. Each trendsetting style is a juxtaposition of retro and **modern** designs, flavored with elements of **speed**, rugged **sportiness** and **military** toughness. Adventurous accents, **hip colorways** and cool materials like carbon fiber and **distressed metal** intensify this highly wearable collection of “**geek chic**” to **rough-and-tumble** styles. Custom temple tips inspired by the curvature of tailor shears pay homage to Marc Ecko’s grandfather, a tailor, and every **passionate craftsman**.



# IZOD







# SPORTY. COLORFUL. AMERICAN.

Known around the world for its **sport-inspired** design, IZOD offers crisp, clean, **All American** style. With bold, **colorful** and energetic design, the IZOD sun collection offers **classically** sporty styles with a clean, **youthful** aesthetic. The complete IZOD sun collection is crafted to perform as well as the man who wears them. IZOD Eyes provides **sculpted**, clean profiles enhanced by pops of vibrant color. IZOD PerformX suns are functional, **high performance** frames of uncompromising **durability**.



2014 SUNstyle 11



# TRUE ROMANCE

JESSICA McCLINTOCK  
*Eyewear Collection*

Founded in 1969, Jessica McClintock, Inc., manufactures and markets apparel, accessories, and fragrances for women and girls. Renowned for its dresses and accessories for prom, weddings and special occasions, this multi-million dollar fashion house also offers home furnishings, bath products, and eyewear.



# ENCHANTED JEWELS



The Jessica McClintock sun collection stays true to the brand's roots and loyal following by offering the **romantic** styling, Victorian detailing and intricate **filigree** patterns you've come to expect and love. Feminine **mother-of-pearl** accents, **opulent** colorations, and piercings inspired by lovely lace and **jewelry** add a whisper of nostalgia. **Rich**, handmade acetates and **dazzling** metal accents set this stylish collection in a class by itself.



# SUN & SENSIBILITY

## SUN FORECASTING:



### What's Hot for Men:

- Bright colors like royal to icy blues, citrus hues, classic black and crystal
- Details like emphasized brow bars, textured materials, mirrored lenses, and double and keyhole bridges
- Shapes like modified aviators, round, retro and sporty

### What's Hot for Women:

- Colored or clear translucents, bright and neon hues, bright whites and pastels
- Details like gems, mirrored lenses, glitter, stud details, and handcrafted, feminine accents
- Shapes like aviators, wayfarers, cat-eyes, geometric, round and oversized



## SUN FACTS:

**1.** 203 million people in the U.S. wear non-prescription sunwear, but very few wear Rx sunwear. Tap into the potentially huge Rx sunwear market by starting right in your own waiting room!

**2.** The optical quality of prescription sunglasses is superior to over-the-counter (OTC) sunglasses, providing enhanced color and contrast, better depth perception, and protection from harmful UV rays.

**3.** 63% of ECPs state that brand names are important when it comes to selling sunwear.

**4.** The average eye care professional carries 8 brands of sunwear.





When it comes to creating an attractive frame board, BrandSpace™ is our proven methodology that helps you choose the right mix of brands and styles for your patients.

Your ClearVision Sales Consultant will help you select a sun collection based on the demographics of your practice. So whether your patients are trendy fashionistas or timeless traditionalists, you'll see that our unique, profit-enhancing BrandSpace approach just makes sense.

	Fashion Trend	Modern Contemporary	Sport Active	Classic Traditional
\$81+	MARC JACOBS CHANEL DIOR GUCCI PRADA FENDI MICHAEL KORS TOM FORD	CALVIN KLEIN BURBERRY VERA WANG BOSS BY HUGO BOSS	TAG HEUER NIKE FLEXON MAUI JIM NAUTICA FLEXON OAKLEY	OLIVER PEOPLES PERSOL
\$60 - \$80	DIESEL BEBE DIANE VON FURSTENBERG COACH JUST CAVALLI TORY BURCH <u>BCBGMAXAZRIA</u>	DANA BUCHMAN KATE SPADE CK BY CALVIN KLEIN JHANE BARNES NICOLE MILLER ORIGINAL PENGUIN <u>COLE HAAN</u> VERA BRADLEY	TIMBERLAND NIKE LACOSTE RAY BAN <u>IZOD PFX</u>	LILY PULTZER TURA TOMMY BAHAMA POLO BY RALPH LAUREN
BELOW \$59	D&G SAKS 5TH AVE JUICY COUTURE <u>MARC ECKO</u> MARC BY MARC JACOBS EMPORIO ARMANI GUESS LUCKY	NINE WEST FOSSIL <u>ELLEN TRACY</u> ANNE KLEIN ELLE KENNETH COLE DKNY	CARRERA TOMMY HILFIGER CHESTERFIELD <u>IZOD</u> NAUTICA COLUMBIA ADIDAS	LIZ CLAIBORNE BANANA REPUBLIC <u>JESSICA MCCLINTOCK</u> BROOKS BROTHERS RALPH LAUREN TRES JOLIE

# BCBGMAXAZRIA

Featuring directional silhouettes, elevated materials and a vibrant color palette, BCBGMAXAZRIA sunwear is punctuated by iconic stud bar hardware, aligning the collection within the brand's portfolio of lifestyle products.

## AMUSE

EYE	57.0
A	57.0
B	43.2
ED	60.6
DBL	15.0
TEMPLES	135MM

FEATURES: ACETATE  
CR39 UV 400 LENSES



BLACK



BROWN

## COURAGE

EYE	56.0
A	56.0
B	43.5
ED	58.7
DBL	16.0
TEMPLES	130MM

FEATURES: ACETATE  
CR39 UV 400 LENSES



MAGENTA LAMINATE



BLACK LAMINATE



## DATE NIGHT

EYE	56.0
A	56.0
B	44.0
ED	58.8
DBL	17.0
TEMPLES	135MM

FEATURES: ACETATE  
CR39 UV 400 GRADIENT LENSES



PLUM LAMINATE



TORTOISE LAMINATE

## DESTINY

EYE	54.0
A	54.0
B	40.0
ED	58.3
DBL	16.0
TEMPLES	130MM

FEATURES: METAL ALLOY  
METAL ALLOY COMBINATION TEMPLES  
POLYCARBONATE UV 400 GRADIENT LENSES



WHITE



BLACK



TORTOISE

## FABULOUS

*petite fit*

EYE	54.0	56.0
A	54.0	56.0
B	42.9	44.5
ED	57.1	59.1
DBL	15.0	16.0
TEMPLES	125MM	130MM

FEATURES: ACETATE  
CR39 UV 400 LENSES



BROWN TRANSPARENT



WINE TRANSPARENT



## FASCINATION

EYE	51.0
A	51.0
B	39.0
ED	55.0
DBL	18.0
TEMPLES	135MM

FEATURES: ACETATE COMBO  
ACETATE TEMPLES  
CR39 UV 400 LENSES



WINE MARBLE



BROWN MARBLE

## FEISTY

EYE	58.0
A	58.0
B	49.0
ED	60.8
DBL	14.0
TEMPLES	130MM

FEATURES: METAL ALLOY  
ACETATE TEMPLES  
POLYCARBONATE UV 400 LENSES  
† FLASH MIRROR LENSES



BLACK



†GOLD

## GLIMMER

EYE	56.0
A	56.0
B	44.0
ED	58.5
DBL	17.0
TEMPLES	135MM

FEATURES: ACETATE  
CR39 UV 400 GRADIENT LENSES



BROWN



BLACK





JOY

EYE	57.0
A	57.0
B	34.0
ED	59.2
DBL	15.0
TEMPLES	130MM

FEATURES: ACETATE  
CR39 UV 400 LENSES



BLACK



BROWN

LACEY

EYE	48.0
A	48.0
B	45.0
ED	50.8
DBL	20.0
TEMPLES	135MM

FEATURES: ACETATE  
CR39 UV 400 LENSES



BROWN LACEY



BLACK LACEY

LUMINOUS

EYE	56.0
A	56.0
B	47.0
ED	60.0
DBL	16.0
TEMPLES	130MM

FEATURES: ACETATE  
CR39 UV 400 GRADIENT LENSES



PURPLE LAMINATE



BLACK LAMINATE

## LUXE

EYE	58.0
A	58.0
B	45.4
ED	64.0
DBL	14.0
TEMPLES	130MM

FEATURES: ACETATE  
STAINLESS STEEL TEMPLES  
CR39 UV 400 GRADIENT LENSES



TORTOISE



BLACK

## MERRY

petite fit

EYE	53.0
A	53.0
B	34.3
ED	54.4
DBL	16.0
TEMPLES	130MM

FEATURES: ACETATE  
CR39 UV 400 LENSES



EGGPLANT MARBLE



BURGUNDY MARBLE

## PRECIOUS

petite fit

EYE	53.0	56.0
A	52.8	56.0
B	40.7	43.0
ED	55.7	59.1
DBL	14.0	15.0
TEMPLES	130MM	135MM

FEATURES: ACETATE  
CR39 UV 400 LENSES



TEAL LACE



RASPBERRY LACE





## ROXIE

EYE	59.0
A	59.0
B	45.4
ED	66.6
DBL	14.0
TEMPLES	130MM

FEATURES: METAL ALLOY  
ACETATE TEMPLES  
POLYCARBONATE UV 400 GRADIENT LENSES



NAVY



MERLOT

## SAUCY

EYE	59.0
A	59.0
B	39.3
ED	62.0
DBL	17.0
TEMPLES	130MM

FEATURES: ACETATE  
CR39 UV 400 LENSES



BROWN LAMINATE



NAVY LAMINATE

## STUNNING

*petite fit*

EYE	51.0	53.0
A	51.0	53.0
B	38.0	39.5
ED	53.4	55.5
DBL	16.0	17.0
TEMPLES	135MM	140MM

FEATURES: ACETATE COMBO  
METAL ALLOY COMBINATION TEMPLES  
CR39 UV 400 LENSES



BLACK



TORTOISE



IVORY



SUNKISSED

EYE	59.0
A	59.0
B	54.1
ED	65.8
DBL	13.0
TEMPLES	130MM

FEATURES: METAL ALLOY  
POLYCARBONATE UV 400 GRADIENT LENSES



BROWN GOLD



ROSE GOLD

SUNSHINE

EYE	55.0
A	55.0
B	45.0
ED	59.7
DBL	15.0
TEMPLES	135MM

FEATURES: METAL ALLOY  
POLYCARBONATE UV 400 LENSES  
WITH FLASH MIRROR LENS COATING



GOLD



GUNMETAL

TICKLED

*petite fit*

EYE	53.0
A	53.0
B	38.5
ED	55.2
DBL	14.0
TEMPLES	130MM

FEATURES: ACETATE  
CR39 UV 400 LENSES  
\* NEW COLOR



\*WHITE TORTOISE



BLACK



BROWN ROSE



PURPLE TRANSPARENT





VAMP

EYE	54.0
A	54.0
B	40.0
ED	57.0
DBL	14.0
TEMPLES	140MM

FEATURES: ACETATE COMBO  
ACETATE TEMPLES  
CR39 UV 400 GRADIENT LENSES



BLUE MULTI



RED MULTI

VIBRANT

EYE	56.0
A	56.0
B	43.2
ED	61.1
DBL	16.0
TEMPLES	135MM

FEATURES: ACETATE  
METAL ALLOY TEMPLES  
CR39 UV 400 GRADIENT LENSES



BROWN



RED

WHIMSY

EYE	53.0
A	53.0
B	45.8
ED	58.0
DBL	17.0
TEMPLES	135MM

FEATURES: METAL ALLOY  
CR39 UV 400 LENSES



BLACK



PLUM



# ELLEN TRACY™

Bold, contemporary designs are the pulse of the Ellen Tracy sun collection. Styles are enhanced with a touch of “notice me” drama through animal print accents and beautiful, jewelry-inspired textures. Uplifting geometric eye shapes and gemstone colorations enhance the richness of this meticulously designed collection.

## ANTIGUA

*petite fit*

EYE	53.0
A	53.0
B	34.0
ED	55.1
DBL	16.0
TEMPLES	125MM

FEATURES: ACETATE  
CR39 UV 400 LENSES  
\* NEW COLOR



\*TORTOISE LAMINATE



BLACK EGGPLANT LAMINATE



BROWN OLIVE LAMINATE

## BERMUDA

EYE	59.0
A	59.0
B	41.5
ED	64.0
DBL	14.0
TEMPLES	130MM

FEATURES: ACETATE  
CR39 UV 400 LENSES



WINE HORN



BLACK





## BRASILIA

EYE	59.0
A	59.0
B	38.0
ED	60.0
DBL	15.0
TEMPLES	130MM

FEATURES: ACETATE  
METAL ALLOY COMBINATION TEMPLES  
CR39 UV 400 LENSES



BLACK



TORTOISE

## KENYA

EYE	56.0
A	56.0
B	38.2
ED	57.3
DBL	17.0
TEMPLES	130MM

FEATURES: ACETATE  
CR39 UV 400 LENSES



BROWN FADE



PLUM FADE

## LIMA

EYE	58.0
A	58.0
B	42.5
ED	59.6
DBL	16.0
TEMPLES	135MM

FEATURES: ACETATE  
CR39 UV 400 LENSES



EGGPLANT LAMINATE



TORTOISE



MOJAVE

*petite fit*

EYE	54.0
A	54.0
B	34.0
ED	54.6
DBL	17.0
TEMPLES	125MM

FEATURES: ACETATE  
CR39 UV 400 LENSES



AMBER TEAL



BROWN MARBLE



BLACK LEOPARD

MUNICH

EYE	58.0
A	58.0
B	38.0
ED	62.2
DBL	16.0
TEMPLES	130MM

FEATURES: STAINLESS STEEL  
POLYCARBONATE UV 400 GRADIENT LENSES



BLACK



ANTIQUE GOLD

MYKONOS

EYE	55.0
A	55.0
B	42.0
ED	60.0
DBL	18.0
TEMPLES	140MM

FEATURES: ACETATE  
CR39 UV 400 LENSES  
+ GRADIENT LENSES



BLACK



+TORTOISE





RISA

*petite fit*

EYE	54.0	58.0
A	54.0	58.0
B	36.8	39.5
ED	55.5	59.6
DBL	16.0	17.0
TEMPLES	130MM	135MM

FEATURES: ACETATE  
CR39 UV 400 LENSES



BROWN LEOPARD



SMOKE LEOPARD

SIENA

EYE	56.0
A	56.0
B	40.0
ED	58.2
DBL	16.0
TEMPLES	135MM

FEATURES: ACETATE  
METAL ALLOY COMBINATION TEMPLES  
CR39 UV 400 LENSES



BLUE HAVANA



ROSE HAVANA

SORIA

EYE	59.0
A	59.0
B	38.0
ED	61.8
DBL	15.0
TEMPLES	130MM

FEATURES: ACETATE  
METAL ALLOY COMBINATION TEMPLES  
CR39 UV 400 LENSES



BLACK



TORTOISE



## SPARTA

EYE	57.0
A	57.0
B	41.0
ED	61.1
DBL	17.0
TEMPLES	135MM

FEATURES: ACETATE  
METAL ALLOY COMBINATION TEMPLES  
CR39 UV 400 LENSES



BLUE LEOPARD



BROWN LEOPARD

## TAHARA

*petite fit*

EYE	53.0	56.0
A	53.0	56.0
B	39.8	42.0
ED	57.1	60.3
DBL	16.0	17.0
TEMPLES	125MM	130MM

FEATURES: ACETATE  
METAL ALLOY COMBINATION TEMPLES  
CR39 UV 400 GRADIENT LENSES



EGGPLANT HORN



RAISIN HORN

## VENEZUELA

EYE	58.0
A	58.0
B	37.0
ED	62.0
DBL	15.0
TEMPLES	130MM

FEATURES: ACETATE  
CR39 UV 400 LENSES



TORTOISE



EGGPLANT



# COLE HAAN

Taking its inspiration from timeless classics, the Cole Haan sunwear collection elegantly fuses tradition and modernity. Men's styles feature well-crafted shapes in plastics and crisp metals. Women's styles blend rich materials in unparalleled hues with a borrowed-from-the-boys profile.

## 610

*petite fit*

EYE	52.0	57.0
A	52.0	57.0
B	42.9	47.0
ED	55.6	60.9
DBL	14.0	15.0
TEMPLES	125MM	135MM

FEATURES: STAINLESS STEEL  
 METAL ALLOY TEMPLES  
 POLYCARBONATE CR39 UV 400 LENSES  
 \* NEW COLOR + GRADIENT LENSES  
 † FLASH MIRROR LENS COATING



\*†YELLOW GOLD



\*+BLUE VIOLET



\*†PEWTER



+WHITE



COBALT



GOLD



GUNMETAL

## 612

EYE	54.0
A	54.0
B	45.0
ED	57.5
DBL	19.0
TEMPLES	130MM

FEATURES: ACETATE  
 CR39 UV 400 GRADIENT LENSES



BURGUNDY ROSE HORN



TORTOISE CRYSTAL LAMINATE



NAVY WINE HORN





614

EYE	58.0
A	58.0
B	41.0
ED	62.8
DBL	16.0
TEMPLES	140MM

FEATURES: ACETATE  
CR39 UV 400 LENSES



TEAL HORN FADE



BROWN HORN FADE

615

EYE	56.0
A	56.0
B	41.0
ED	60.8
DBL	16.0
TEMPLES	135MM

FEATURES: ACETATE  
CR39 UV 400 LENSES



COBALT



CRYSTAL

616

EYE	58.0
A	58.0
B	47.2
ED	60.7
DBL	16.0
TEMPLES	135MM

FEATURES: ACETATE  
CR39 UV 400 LENSES



EGGPLANT



HONEY



617

EYE	57.0
A	57.0
B	46.0
ED	60.4
DBL	16.0
TEMPLES	130MM

FEATURES: ACETATE  
METAL ALLOY TEMPLES  
CR39 UV 400 GRADIENT LENSES



BLACK



TORTOISE

618

EYE	55.0
A	55.0
B	41.1
ED	59.2
DBL	16.0
TEMPLES	130MM

FEATURES: ACETATE  
CR39 UV 400 LENSES



BLACK LAMINATE



WHITE LAMINATE

619

EYE	50.0
A	50.0
B	42.0
ED	51.6
DBL	18.0
TEMPLES	130MM

FEATURES: ACETATE  
CR39 UV 400 LENSES  
+ GRADIENT LENSES  
† FLASH MIRROR LENS COATING



†CRYSTAL MATTE



+TORTOISE



620

EYE	57.0
A	57.0
B	45.2
ED	61.6
DBL	14.0
TEMPLES	135MM

FEATURES: ACETATE  
CR39 UV 400 LENSES  
+ GRADIENT LENSES



+BLACK TORTOISE



HONEY



BLUSH



BLUE

621

EYE	57.0
A	57.0
B	44.0
ED	62.1
DBL	16.0
TEMPLES	135MM

FEATURES: ACETATE  
CR39 UV 400 GRADIENT LENSES



BROWN HORN FADE



GREY HORN FADE

622

EYE	50.0
A	50.0
B	42.2
ED	51.4
DBL	19.0
TEMPLES	135MM

FEATURES: ACETATE COMBO  
ACETATE TEMPLES  
CR39 UV 400 LENSES  
+ GRADIENT LENSES



+BLACK LAMINATE



HONEY TORTOISE LAMINATE





624

*petite fit*

EYE	49.0	52.0
A	49.0	52.0
B	42.7	45.3
ED	51.4	54.6
DBL	16.0	17.0
TEMPLES	130MM	135MM

FEATURES: ACETATE  
CR39 UV 400 LENSES



BROWN FADE



HONEY FADE



ORANGE FADE

625

*petite fit*

EYE	51.0	53.0
A	51.0	53.0
B	36.6	38.0
ED	54.2	56.3
DBL	15.0	15.0
TEMPLES	130MM	135MM

FEATURES: ACETATE  
CR39 UV 400 LENSES



NAVY LAMINATE



TORTOISE WINE LAMINATE

690

EYE	58.0
A	58.0
B	49.0
ED	62.7
DBL	17.0
TEMPLES	135MM

FEATURES: METAL ALLOY  
CR39 UV 400 LENSES



BLACK TORTOISE



KHAKI



694

EYE	56.0
A	56.0
B	37.0
ED	57.6
DBL	17.0
TEMPLES	145MM

FEATURES: ACETATE  
CR39 UV 400 LENSES



BROWN SMOKE



NAVY BLUE

695

EYE	57.0
A	57.0
B	40.0
ED	61.8
DBL	14.0
TEMPLES	140MM

FEATURES: METAL ALLOY  
METAL ALLOY COMBINATION TEMPLES  
POLYCARBONATE UV 400 LENSES  
† FLASH MIRROR LENS COATING



GOLD ANTIQUE



†GUNMETAL

696

EYE	51.0
A	51.0
B	43.0
ED	54.2
DBL	21.0
TEMPLES	140MM

FEATURES: ACETATE COMBO  
POLYCARBONATE UV 400 LENSES



HONEY TORTOISE LAMINATE



GREEN HORN LAMINATE



697

EYE	54.0
A	54.0
B	38.5
ED	58.4
DBL	16.0
TEMPLES	140MM

FEATURES: ACETATE  
CR39 UV 400 LENSES



BLACK HORN LAMINATE



BROWN LAMINATE

698

EYE	48.0
A	48.0
B	42.8
ED	51.0
DBL	22.0
TEMPLES	145MM

FEATURES: ACETATE  
CR39 UV 400 LENSES



BLACK



HONEY HORN

699

EYE	57.0
A	57.0
B	38.2
ED	62.1
DBL	17.0
TEMPLES	140MM

FEATURES: METAL ALLOY  
ACETATE TEMPLES  
POLYCARBONATE UV 400 LENSES



BROWN



GUNMETAL





700

---

EYE	55.0
A	55.0
B	38.0
ED	59.6
DBL	17.0
TEMPLES	140MM

FEATURES: ACETATE  
CR39 UV 400 LENSES



BLACK TORTOISE FADE



BLUE HORN FADE

# IZOD

With bold, colorful and energetic design, the IZOD sun collection offers classically sporty styles with a clean, youthful aesthetic. IZOD Eyes sunwear provides sculpted, clean profiles enhanced by pops of vibrant color. Functional, high performance IZOD PerformX frames offer memory metal bridges and temples, providing uncompromising durability.

## 750



EYE	58.0	62.0
A	58.0	62.0
B	36.0	38.5
ED	62.5	66.8
DBL	16.0	17.0
TEMPLES	135MM	145MM

FEATURES: ACETATE  
 SPRING HINGES  
 CR39 UV 400 LENSES  
 \* NEW COLOR  
 NOTE: THIS MODEL HAS "ON SIZE" PATTERNS



\*CRYSTAL MATTE



BLACK



TORTOISE

## 755

EYE	57.0
A	57.0
B	33.0
ED	59.8
DBL	15.0
TEMPLES	135MM

FEATURES: ACETATE  
 SPRING HINGES  
 CR39 UV 400 LENSES  
 \* NEW COLOR



\*BLUE BLACK HORN



TORTOISE



BLACK LAMINATE

756

EYE	50.0
A	50.0
B	46.0
ED	54.0
DBL	19.0
TEMPLES	140MM

FEATURES: METAL ALLOY  
 SPRING HINGES  
 POLYCARBONATE UV 400 LENSES WITH FLASH  
 MIRROR LENS COATING



PEWTER



KHAKI BROWN

757

EYE	56.0
A	56.0
B	42.0
ED	60.0
DBL	17.0
TEMPLES	140MM

FEATURES: ACETATE  
 SPRING HINGES  
 CR39 UV 400 LENSES



BLACK FADE



TORTOISE LAMINATE

759

EYE	58.0
A	58.0
B	37.0
ED	62.0
DBL	17.0
TEMPLES	140MM

FEATURES: METAL ALLOY  
 MOLDED RUBBER TIPS  
 POLYCARBONATE UV 400 LENSES WITH FLASH  
 MIRROR LENS COATING



GUNMETAL



BROWN



760

EYE	57.0
A	57.0
B	38.0
ED	60.0
DBL	17.0
TEMPLES	140MM

FEATURES: ACETATE  
SPRING HINGES  
CR39 UV 400 LENSES



BROWN FADE



CHARCOAL FADE

761

**XLFIT**

EYE	57.0	60.0
A	57.0	60.0
B	35.2	37.0
ED	60.2	63.3
DBL	16.0	17.0
TEMPLES	135MM	140MM

FEATURES: METAL ALLOY  
ACETATE TEMPLES WITH RUBBER INSERT  
SPRING HINGES  
POLYCARBONATE UV 400 LENSES



BLACK



BROWN

762

EYE	53.0
A	53.0
B	30.0
ED	54.9
DBL	16.0
TEMPLES	135MM

FEATURES: STAINLESS STEEL  
METAL ALLOY TEMPLES  
SPRING HINGES  
POLYCARBONATE UV 400 LENSES



BROWN



BLACK



X-88

EYE	58.0
A	58.0
B	41.0
ED	63.1
DBL	19.0
TEMPLES	140MM

FEATURES: METAL ALLOY | MEMORY METAL BRIDGE  
 MOLDED RUBBER & MEMORY METAL TEMPLES  
 POLYCARBONATE UV 400 LENSES  
 \*NEW COLOR



GRAPHITE



\*COAL BLACK MATTE



BROWN



BLACK

X-90

EYE	57.0
A	57.0
B	39.0
ED	62.5
DBL	15.0
TEMPLES	140MM

FEATURES: METAL ALLOY | MEMORY METAL BRIDGE  
 MEMORY METAL TEMPLES  
 MOLDED RUBBER TIPS  
 POLYCARBONATE UV 400 LENSES  
 \*NEW COLOR



BROWN



\*COAL BLACK MATTE



CHROME

X-91

EYE	57.0
A	57.0
B	36.0
ED	61.1
DBL	18.0
TEMPLES	140MM

FEATURES: METAL ALLOY | MEMORY METAL BRIDGE  
 MEMORY METAL TEMPLES  
 MOLDED RUBBER TIPS  
 POLYCARBONATE UV 400 LENSES



BLACK



BROWN



X-92



EYE	56.0	60.0
A	56.0	60.0
B	37.0	39.7
ED	58.6	62.8
DBL	17.0	18.0
TEMPLES	135MM	140MM

FEATURES: METAL ALLOY | MEMORY METAL BRIDGE  
 MEMORY METAL TEMPLES  
 MOLDED RUBBER TIPS  
 POLYCARBONATE UV 400 LENSES



BLACK



KHAKI





Each Marc Ecko Cut & Sew sun style is a juxtaposition of retro and modern designs, flavored with elements of speed, rugged sportiness and military toughness. Adventurous accents, hip colorways and cool materials like carbon fiber and distressed metal intensify this highly wearable collection.

### BROKER

EYE	52.0
A	52.0
B	42.0
ED	58.5
DBL	22.0
TEMPLES	135MM

FEATURES: METAL ALLOY  
POLYCARBONATE UV 400 LENSES



GOLD



GUNMETAL

### DELINQUENT

EYE	57.0
A	57.0
B	41.5
ED	61.8
DBL	17.0
TEMPLES	135MM

FEATURES: ACETATE  
CR39 UV 400 LENSES  
+ GRADIENT LENSES



BLUE BLACK TORTOISE



OLIVE MULTI



+BROWN FADE



## GAME ON

EYE	57.0
A	57.0
B	46.0
ED	64.6
DBL	14.0
TEMPLES	140MM

FEATURES: METAL ALLOY  
 METAL ALLOY COMBINATION TEMPLES  
 POLYCARBONATE UV 400 LENSES  
 † FLASH MIRROR LENSES



GOLD



†GUNMETAL

## INSTIGATOR

EYE	58.0
A	58.0
B	40.0
ED	63.2
DBL	16.0
TEMPLES	140MM

FEATURES: ACETATE  
 CR39 UV 400 LENSES



BLACK CARBON



BROWN CARBON



BLUE CARBON

## RATCHET

EYE	57.0
A	57.0
B	39.0
ED	61.4
DBL	15.0
TEMPLES	140MM

FEATURES: STAINLESS STEEL  
 METAL ALLOY COMBINATION TEMPLES  
 POLYCARBONATE UV 400 LENSES



BLACK DISTRESSED



BLUE DISTRESSED



## STITCHES

EYE	51.0
A	51.0
B	38.5
ED	54.1
DBL	18.0
TEMPLES	140MM

FEATURES: ACETATE  
CR39 UV 400 LENSES  
+ GRADIENT LENSES



+BLACK FADE



GREEN OLIVE TORTOISE

## UNDERDOG



EYE	57.0	60.0
A	57.0	60.0
B	35.0	37.0
ED	62.0	64.0
DBL	17.0	18.0
TEMPLES	140MM	145MM

FEATURES: METAL ALLOY  
STAINLESS STEEL TEMPLES  
POLYCARBONATE UV 400 LENSES  
+ GRADIENT LENSES



BLACK



+GUNMETAL MATTE



+BLUE SLATE





# JESSICA McCLINTOCK

*Eyewear Collection*

For women who revel in their femininity, the Jessica McClintock sun collection offers truly romantic styling. Designed with rich, handmade acetates, the collection whispers nostalgia through its Victorian detailing, intricate filigreed patterns and opulent jewel accents.

## 550

*petite fit*

EYE	54.0	57.0
A	54.0	57.0
B	42.6	45.0
ED	58.6	60.4
DBL	17.0	17.0
TEMPLES	125MM	130MM

FEATURES: ACETATE  
CR39 UV 400 LENSES  
\* NEW COLOR



\*RED MARBLE



BLACK LAMINATE



BROWN HORN

## 555

EYE	60.0
A	60.0
B	38.5
ED	70.2
DBL	15.0
TEMPLES	130MM

FEATURES: ACETATE  
METAL ALLOY TEMPLES  
CR39 UV 400 LENSES



BLACK



BROWN TRANSPARENT



559

EYE	57.0
A	57.0
B	34.4
ED	60.5
DBL	17.0
TEMPLES	130MM

FEATURES: ACETATE  
CR39 UV 400 LENSES



BROWN LAMINATE



RED HORN

560

EYE	58.0
A	58.0
B	39.0
ED	61.5
DBL	15.0
TEMPLES	130MM

FEATURES: ACETATE  
STAINLESS STEEL TEMPLES  
CR39 UV 400 LENSES



BLACK MARBLE



BROWN MARBLE

561



EYE	54.0
A	54.0
B	36.1
ED	57.2
DBL	15.0
TEMPLES	125MM

FEATURES: ACETATE  
CR39 UV 400 LENSES  
\* NEW COLOR



\*BROWN HORN



BLACK LAMINATE



BERRY HORN



562

EYE	56.0
A	56.0
B	44.2
ED	58.3
DBL	16.0
TEMPLES	130MM

FEATURES: ACETATE  
CR39 UV 400 LENSES



BLACK



BROWN HORN

563

EYE	54.0
A	54.0
B	34.0
ED	58.0
DBL	16.0
TEMPLES	135MM

FEATURES: ACETATE  
CR39 UV 400 LENSES



BROWN HORN



PURPLE HORN

564

*petite fit*

EYE	54.0
A	54.0
B	42.3
ED	58.5
DBL	16.0
TEMPLES	130MM

FEATURES: ACETATE  
CR39 UV 400 GRADIENT LENSES



BLACK LAMINATE



BROWN LAMINATE





565

EYE	55.0
A	55.0
B	45.7
ED	57.1
DBL	15.0
TEMPLES	135MM

FEATURES: ACETATE  
CR39 UV 400 LENSES  
+ GRADIENT LENSES



+PURPLE MULTI



WINE MULTI

566

*petite fit*

EYE	54.0	58.0
A	54.0	58.0
B	43.7	46.9
ED	56.3	60.8
DBL	16.0	17.0
TEMPLES	130MM	135MM

FEATURES: ACETATE  
CR39 UV 400 GRADIENT LENSES



BROWN HORN



WINE HORN

567

*petite fit*

EYE	54.0	58.0
A	54.0	58.0
B	37.1	39.9
ED	57.1	61.1
DBL	14.0	15.0
TEMPLES	125MM	130MM

FEATURES: ACETATE  
METAL ALLOY COMBINATION TEMPLES  
CR39 UV 400 GRADIENT LENSES



BLUE HORN



TORTOISE

# FITTING

## EVERYONE UNDER THE SUN

### PETITE FIT

Oversized frames may be in vogue, but “too big” is another story. We design our Petite Fit suns in some of today’s hottest looks, for brands like BCBGMAXAZRIA, Cole Haan, Ellen Tracy, and Jessica McClintock.

#### Petite Fit suns offer:

- Narrower bridges and smaller eye sizes to match petite faces and narrower PDs
- Shorter temple lengths for a precise, comfortable fit



### XLFIT™

Created for larger men who want a perfect fit without compromising style, the XLFIT™ collection is available for Marc Ecko Cut & Sew, Cole Haan, and IZOD.

#### XLFIT™ suns include design features like:

- Longer temple lengths
- Wider bridges and larger eye sizes to match fuller faces and wider PDs
- Extended end pieces for greater comfort





---

425 Rabro Drive Suite 2 Hauppauge, NY 11788 | 800.645.3733 | [cvoptical.com](http://cvoptical.com)  
[facebook.com/clearvisionoptical](https://facebook.com/clearvisionoptical) | [twitter.com/cvoptical](https://twitter.com/cvoptical) | [youtube.com/clearvisionoptical](https://youtube.com/clearvisionoptical)